

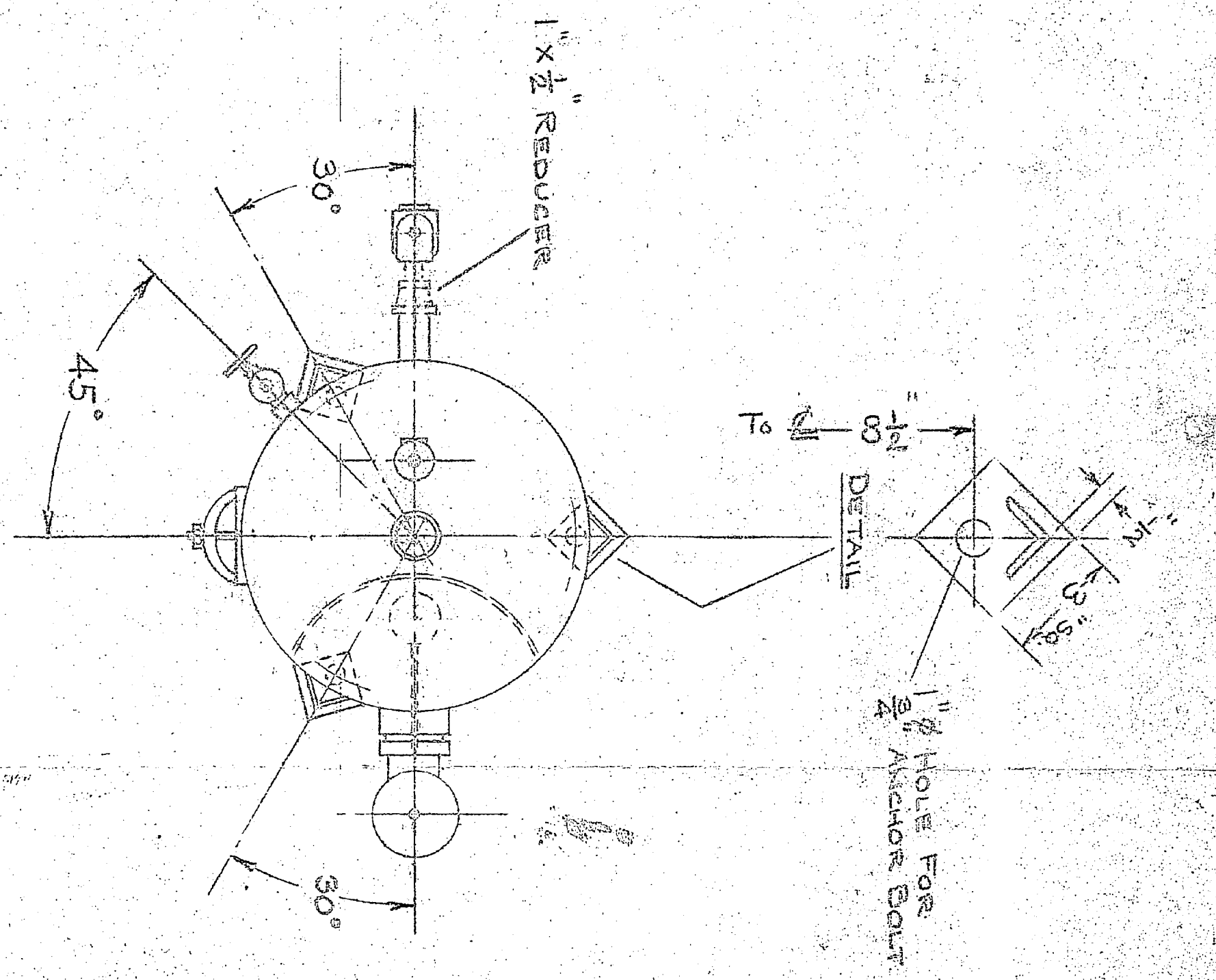
② 1/2" SCR'D ASCO SOLENOID VALVE - BULLETIN B210A, CATALOG # 8210A2, 115 V., 1 PH., 60 CY., MAX. AIR PRESS. 100 #/sq"

1/2" SCR'D CARPENTER ANGLE NEEDLE VALVE

2" SCR'D WATER INLET

② MAGNETROL FLOAT SWITCH MODEL TF-63, 2 1/2" SCR'D CONN., 4" MAX. ADJUSTABLE DIFFERENTIAL (TO OPERATE ASCO SOLENOID VALVE IN AIR INLET LINE), 4" X 6" HANDHOLE

NOTES
 ① NOTHING SHOWN ON THIS DRAWING IS TO BE CONSTRUCTED AS INCREASING THE MATERIALS TO BE SUPPLIED BY THE COCHRANE CORPORATION OVER THAT SPECIFIED IN THEIR CONTRACT.
 DESIGN PRESS. - 100 #/sq - 1952 COPPE
 TEST PRESS. - 244 #/sq
 ② INDICATES CERT. DIMENSION PRINTS WILL BE FURNISHED BY COCHRANE.
 PIPING SHOWN IN DOT & DASH LINES NOT FURNISHED BY COCHRANE.



S.O. 3202-56 DATE SEP 27 1956
 THIS DRAWING IS FOR APPROVAL
 RETURN ONE PRINT IMMEDIATELY
 TO AVOID DELAY IN FABRICATION
 CERTIFIED CONSTRUCTION DRAWING
 FOR YOUR ORDER NO.
J. J. Haussner
 DESTROY PREVIOUS COPIES
 THIS PRINT DUPLICATES PRINTS PREVIOUSLY
 FORWARDED YOU EXCEPT FOR CHANGES AS
 SPECIFIED IN REVISION BLOCK

AERATOR TANK ASSEMBLY

COCHRANE CORPORATION
 MANUFACTURING ENGINEERS
 PHILADELPHIA 32 PENNSYLVANIA

DESIGNERS AND MANUFACTURERS OF
 HOT PROCESS SOFTENERS-DEAERATING HEATERS-DEMINEALIZERS
 ZEOLITE SOFTENERS-STEAM SPECIALTIES-DEALKALIZERS
 FILTERS-CONDENSATE DRAINAGE CONTROL UNITS-REACTORS
 CONTINUOUS BLOWDOWN SYSTEMS

SIZE	NUMBER	CHG. LTR.
E	111357	A

This drawing, property of COCHRANE CORPORATION is conditionally loaned to the customer and/or his authorized engineers, who by receiving it agree not to reproduce or copy it, in whole or in part, or to make any use of it that is or may be injurious to COCHRANE CORPORATION and to return it upon request.
 COCHRANE CORPORATION

SCALE	DRAWN	DATE	CHKD.	FIRST USED ON S.O.	APPRD.	LTR.	DATE	REVISION	DFT. APP.	ENG. APP.
1/2" = 1'-0"	T.B.S.	9-25-56	<i>[Signature]</i>	3202-56	<i>[Signature]</i>	A	9-26-56	TANK O.D. ADDED	<i>[Signature]</i>	<i>[Signature]</i>

