

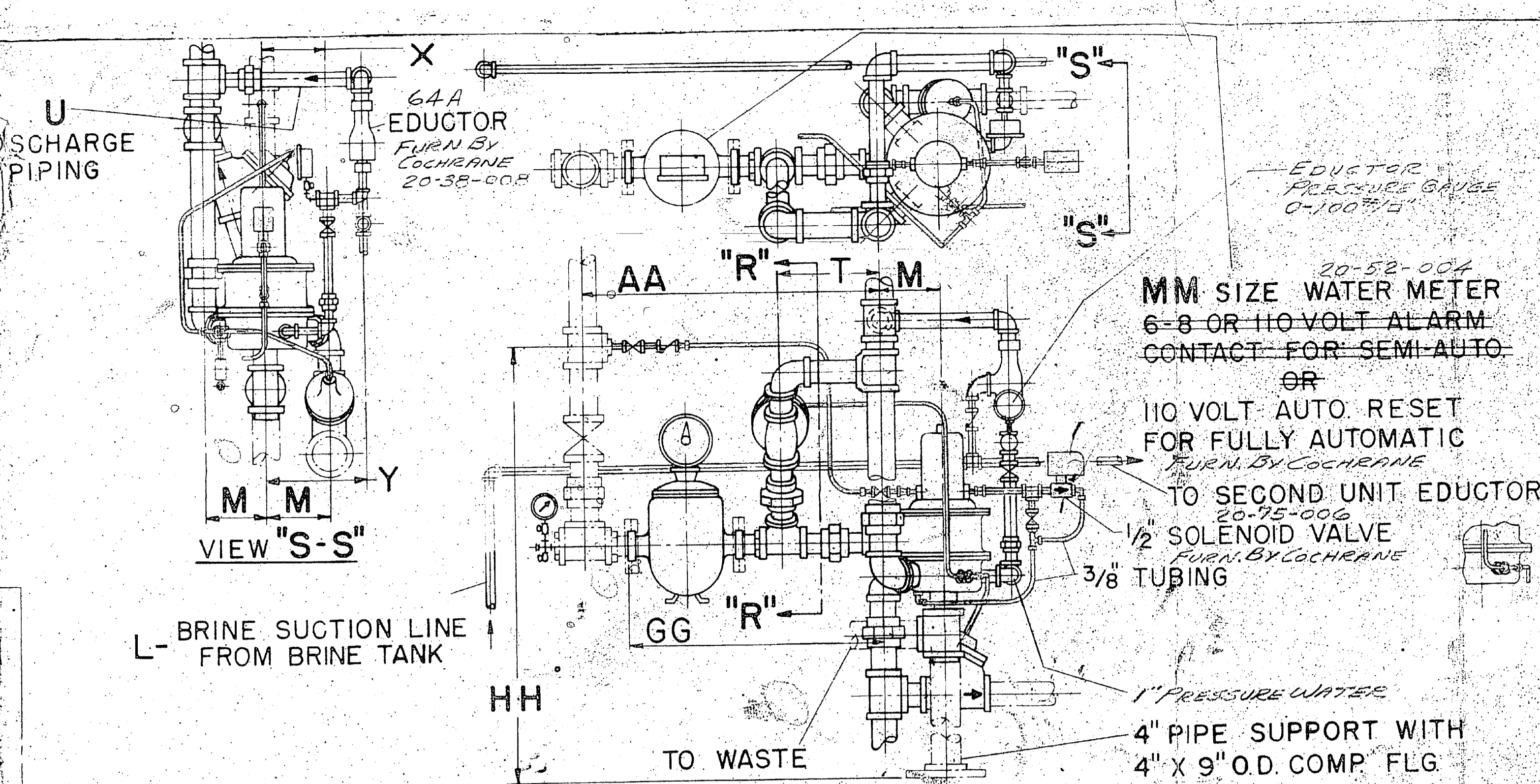
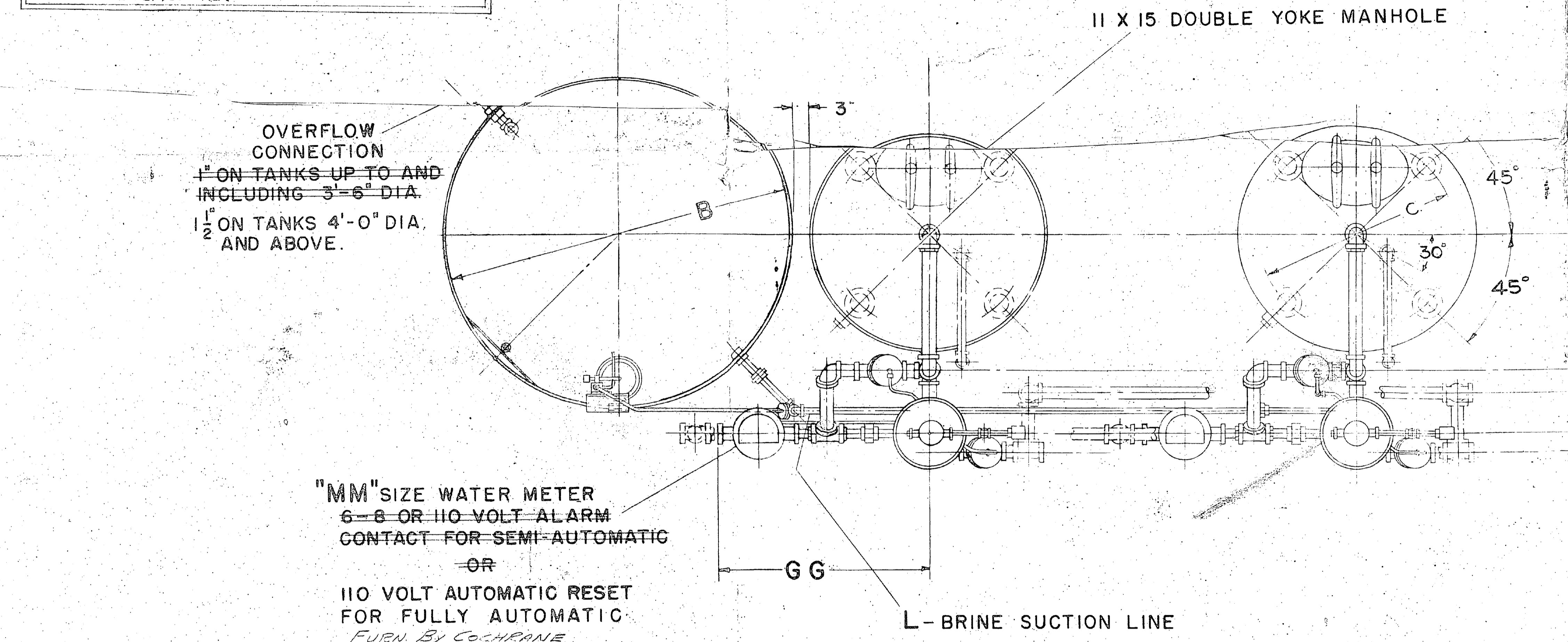
NOTHING SHOWN ON THIS DRAWING IS TO BE CONSTRUED AS RELEASING THE MATERIALS TO BE SUPPLIED BY THE COCHRANE DIVISION SPECIFIED IN THEIR CONTRACT.

DIMENSIONS LOCATING OPENINGS MAY VARY $3/8 \pm$
DO NOT CUT PIPE FOR MAKING CONNECTIONS TO THIS SYSTEM FROM DIMENSIONS GIVEN ON THIS DRAWING AS THEY MAY VARY SLIGHTLY.

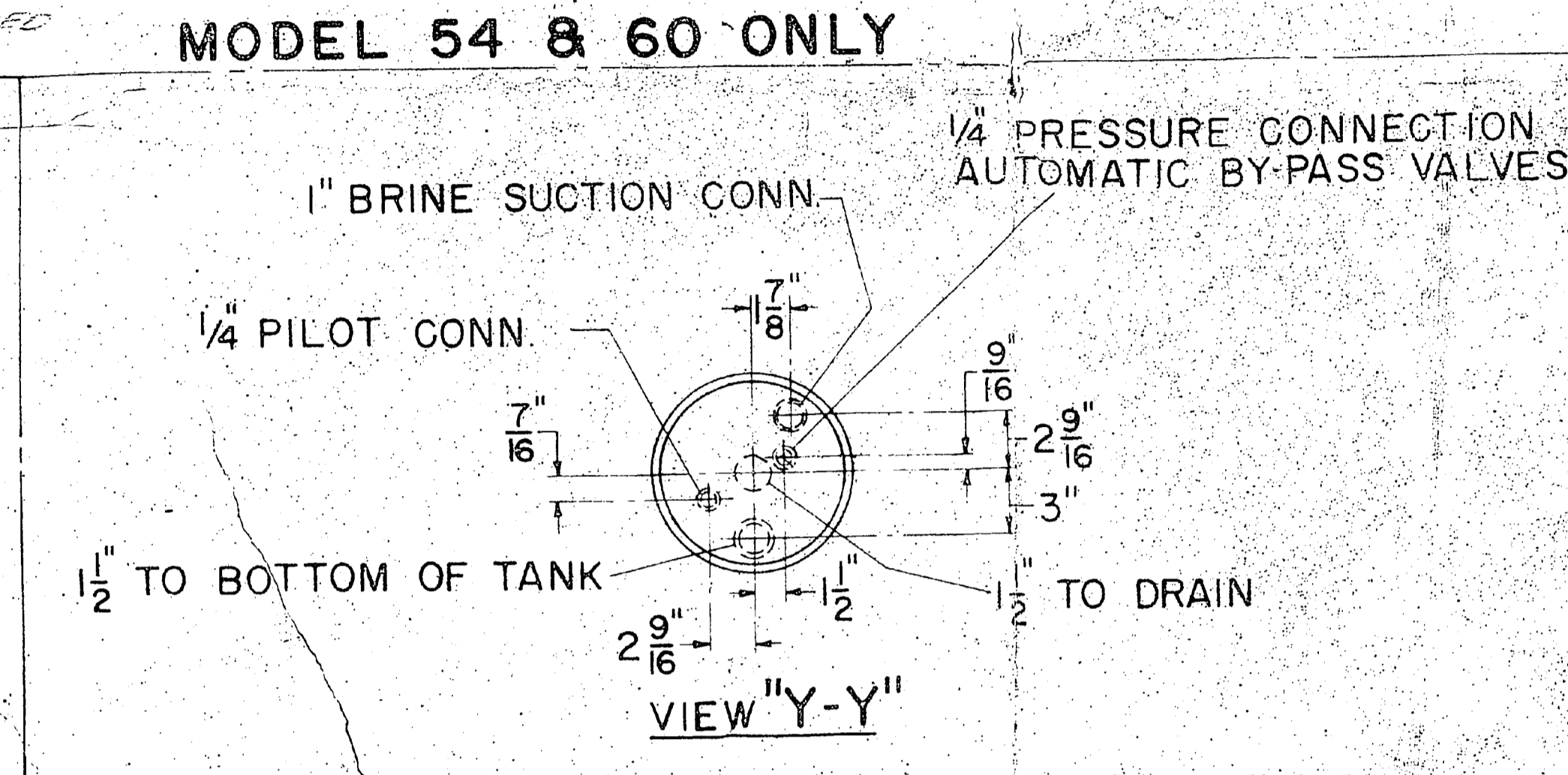
NOTE: THIS EQUIPMENT TO BE FURNISHED BY COCHRANE DIVISION UNLESS OTHERWISE SPECIFIED ON DRAWING.

CUSTOMER TO CUT, THREAD AND FIT ALL PIPING.
DESIGN PRESSURE - EXCHANGE TANK - 100 P.S.I. - 125 P.S.I. (AS SPECIFIED)
TEST PRESSURE - EXCHANGE TANK - 150 P.S.I. - 188 P.S.I.
ON SEMI-AUTOMATIC UNITS METER FURNISHED ONLY WHEN SPECIFIED.

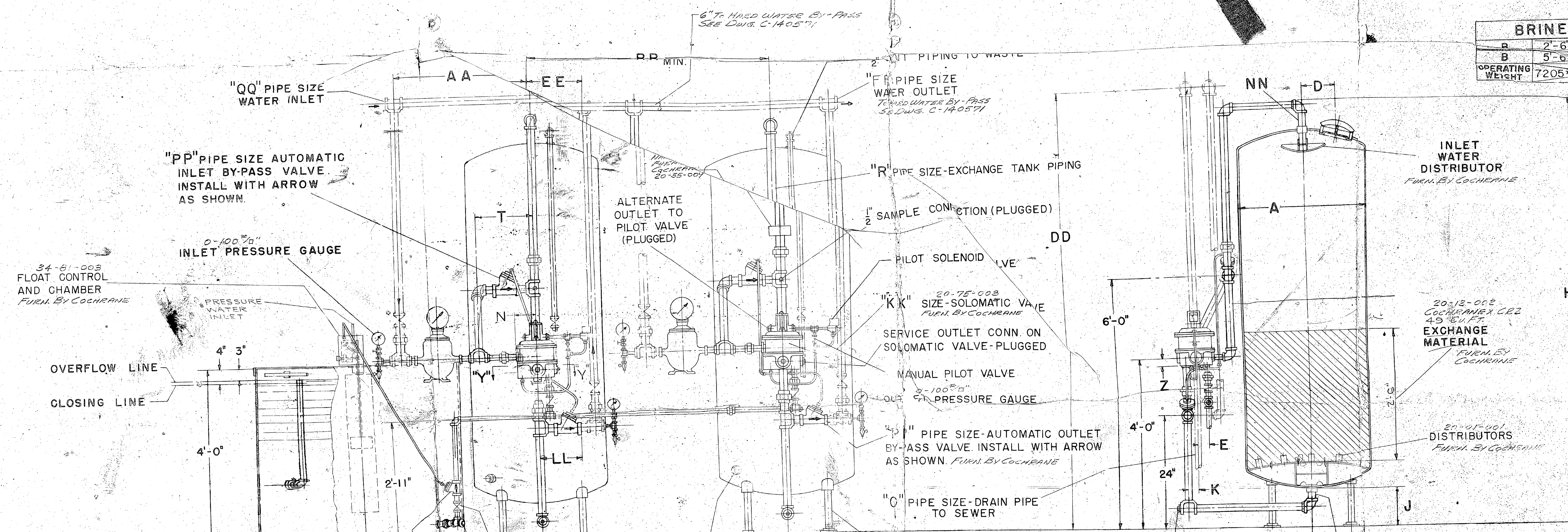
NOTE: THIS ASSEMBLY NOT SUBJECT TO DESIGN CHANGE AS APPROVAL DRAWINGS.



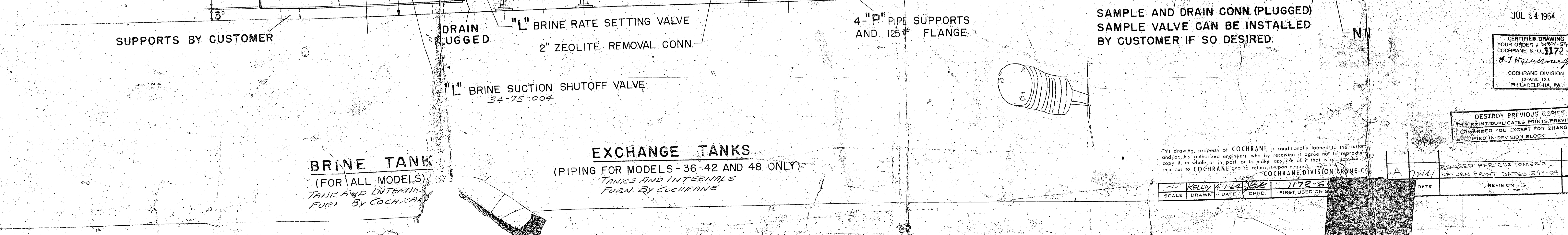
EXCHANGER		DIMENSIONS				
MODEL	36	42	48	54	60	
A	36"	42"	48"	54"	60"	
C	2'-6"	3'-0"	3'-0"	3'-6"	4'-0"	
D	0"	13"	14"	14"	15"	
E	2'-7"	2'-9"	2'-9"	2'-9"	2'-9"	
F	2'-7"	2'-10"	3'-1"	3'-7"	3'-10"	
G	2'-1"	2'-4"	2'-3"	—	—	
H	8'-7 1/2"	8'-10 1/2"	9'-1 1/2"	9'-4 1/2"	9'-6 1/2"	
J	2 5/16"	11 1/2"	14 5/16"	13 5/16"	12 3/4"	
K	3"	3"	3"	—	—	
L	1"	1"	1"	1 1/2" MAX	1 1/4"	
M	—	—	—	6 1/2"	6 5/8"	
N	5 1/16"	5 1/16"	5 1/16"	6 5/8"	6 5/8"	
O	1 1/2"	1 1/2"	1 1/2"	2"	2 1/2"	
P	2"	2"	3"	3"	3"	
Q	—	—	—	—	—	
R	2"	2 1/2"	2 1/2"	3"	3"	
S	—	—	—	—	—	
T	15 1/2"	16"	19 1/4"	10 1/4"	10 1/4"	
U	—	—	—	2" MAX	1 1/2"	
W	2'-10 1/2"	2'-3 1/2"	2'-6 1/2"	3'-1 1/2"	—	
X	—	—	—	—	7"	
Y	—	—	—	—	11"	
Z	1 1/2"	1 1/2"	1 1/2"	1 3/16"	1 3/16"	
AA	3'-1"	3'-2 1/2"	3'-2 1/2"	3'-1"	3'-1"	
BB	2'-10"	3'-1"	3'-4"	—	—	
CC	—	—	—	—	—	
DD	3'-11 1/2"	9'-2 1/2"	9'-5 1/2"	9'-8 1/2"	9'-10 1/2"	
EE	15 1/4"	16"	16"	19 1/4"	19 1/4"	
FF	—	—	—	—	6"	
GG	2'-9"	2'-9"	2'-9"	2'-7 3/8"	2'-7 3/8"	
HH	—	—	—	6'-1"	6'-1"	
KK	1 1/2"	1 1/2"	1 1/2"	2"	2 1/2"	
LL	11 1/4"	11 3/4"	11 3/4"	14 1/2"	14 1/2"	
MM	1 1/2" SCRD	1 1/2" SCRD	1 1/2" SCRD	2" SCRD	2" SCRD	
NN	2 1/2"	3"	3"	4"	4"	
PP	2"	2 1/2"	2 1/2"	3"	3"	
QQ	2 1/2"	3"	3"	4"	3"	
RR	5'-4"	5'-6"	5'-6"	5'-6"	7'-0"	
OPERATING WT (LBS)	6300#	8700#	11300#	15000#	18200#	



BRINE TANK DIMENSIONS	
A	2'-6" 3'-0" 3'-6" 4'-0" 5'-0"
B	5'-6" 6'-0" 6'-0" 6'-0" 6'-0"
OPERATING WEIGHT	7205# 8535# 9960# 11445#



20 cu ft zeolite added to #1 & #2 systems on March 28, 1968
1/2 cu ft #2
10 cu ft #1
6-
10 cu ft #1 in Low



JUL 24 1964
CERTIFIED DRAWING
YOUR ORDER # 1172-6
COCHRANE DIVISION
PHILADELPHIA, PA.

SECTION 2094 SUB-SECTION	
ZEO-MATIC SOFTENER	
DOUBLE UNIT	
MODEL-60	
COCHRANE DIVISION	
MANUFACTURING ENGINEERS	
PHILADELPHIA 32 PENNSYLVANIA	
SIZE	NUMBER
G	140555
12900 151804 128758	

SCALE DRAWN DATE CHG. FIRST USED ON
KELLY W-102 1172-6
DATE REVISION

information on softness
for adding zeolite

information on
softness for adding
zeolite