

MEMORANDUM OF CALL

Previous editions usable

5164
5728

TO:

LB

YOU WERE CALLED BY— YOU WERE VISITED

Cathy Butler

OF (Organization)

STA

PLEASE PHONE (Enter area code, if necessary)

2522 / 2321

WILL CALL AGAIN IS WAITING TO SEE YOU

RETURNED YOUR CALL WISHES AN APPOINTMENT

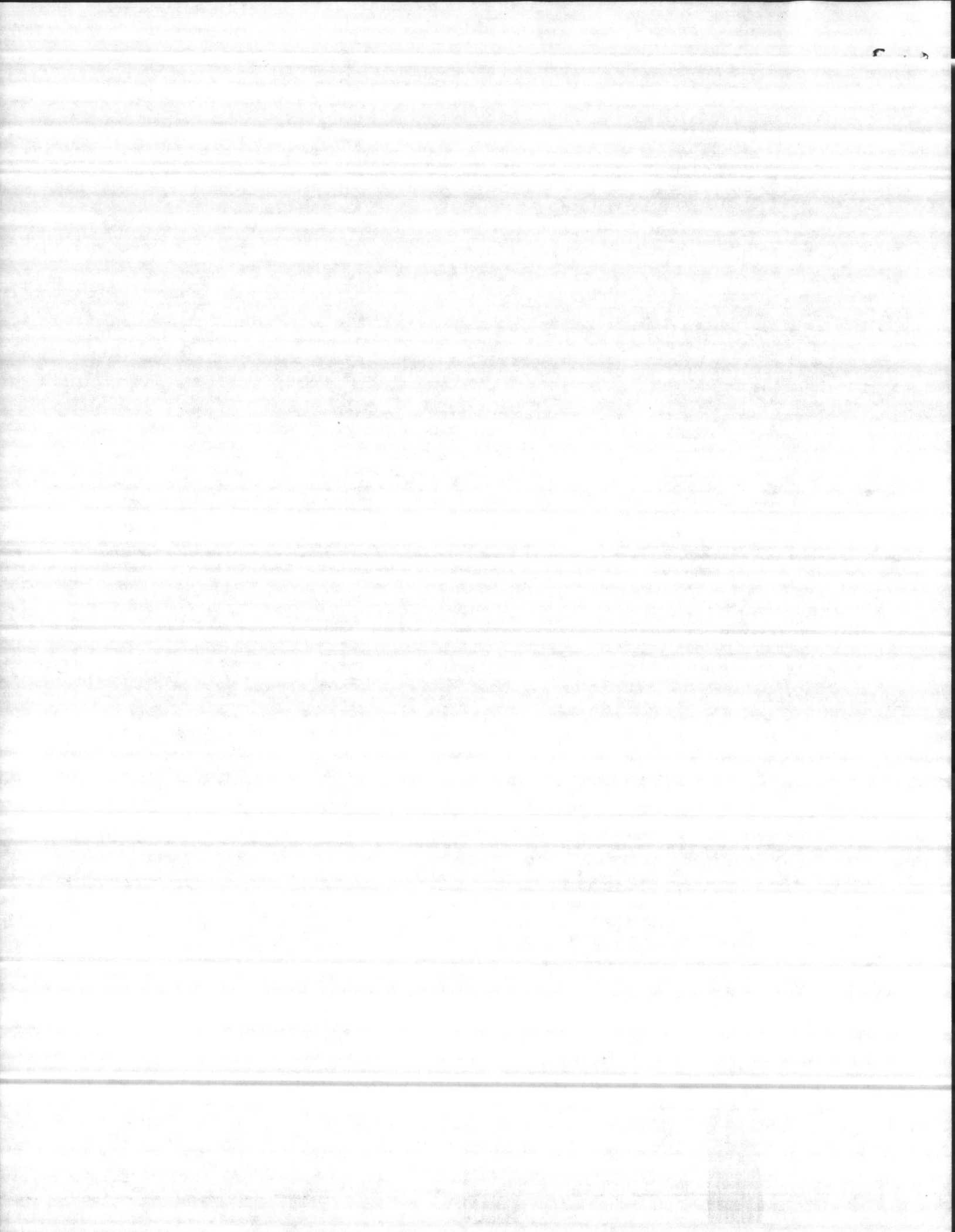
MESSAGE

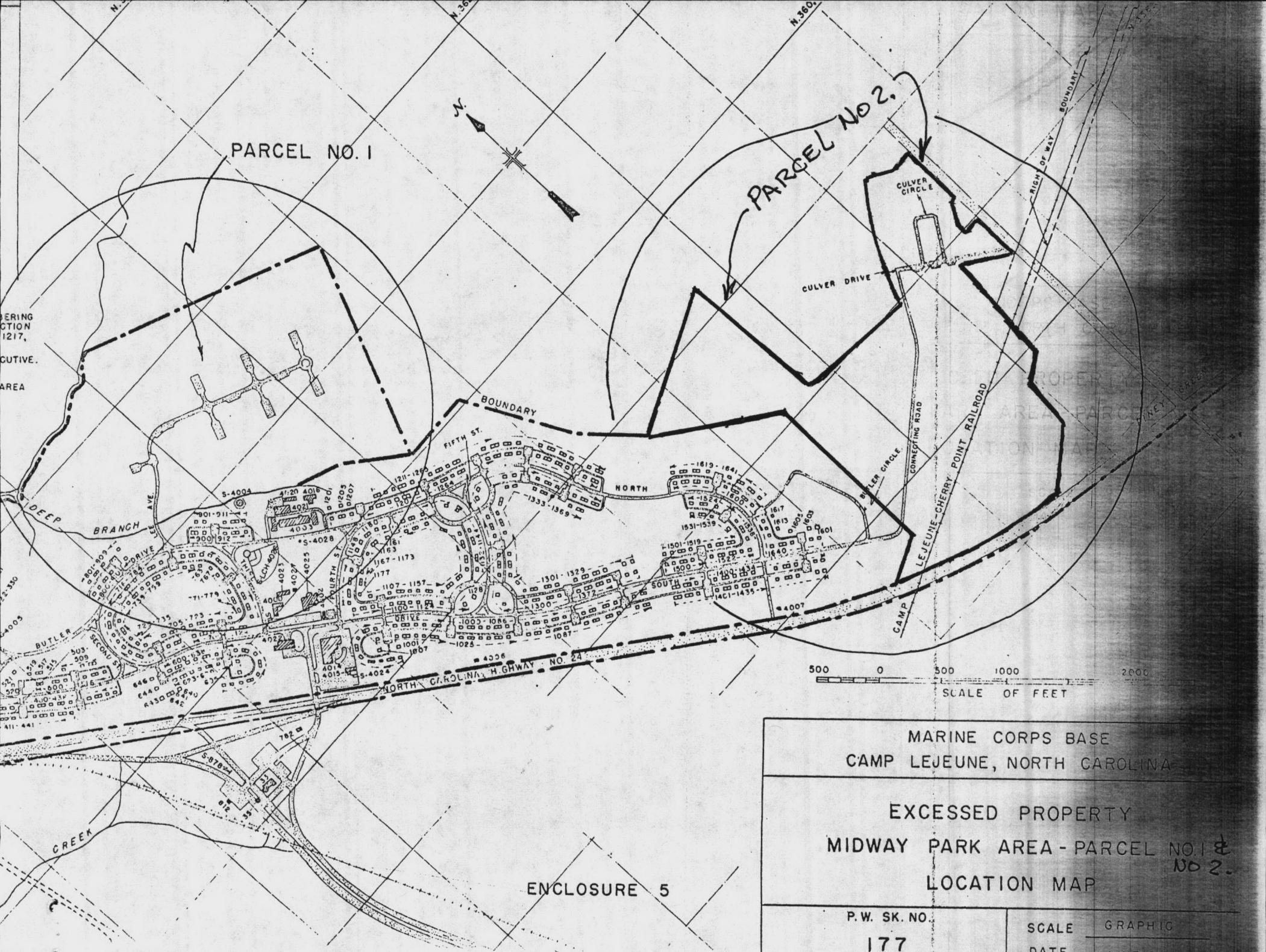
most recent date of
very of a real estate
my property has been
ed since 173 that
rately went to CCCC +
Ed around '73. 900

OPTIONAL FORM 363 (Rev. 7-94)
General Services Administration
U.S. Government Printing Office: 1996 - 404-762/40001

1/8

needs
know
STA
is waiting on info





PARCEL NO. 1

PARCEL NO. 2.

MARINE CORPS BASE
CAMP LEJEUNE, NORTH CAROLINA

EXCESSED PROPERTY
MIDWAY PARK AREA - PARCEL NO. 1 &
NO. 2.
LOCATION MAP

ENCLOSURE 5

P.W. SK. NO.
177

SCALE GRAPHIC
DATE JUNE 30 1971

