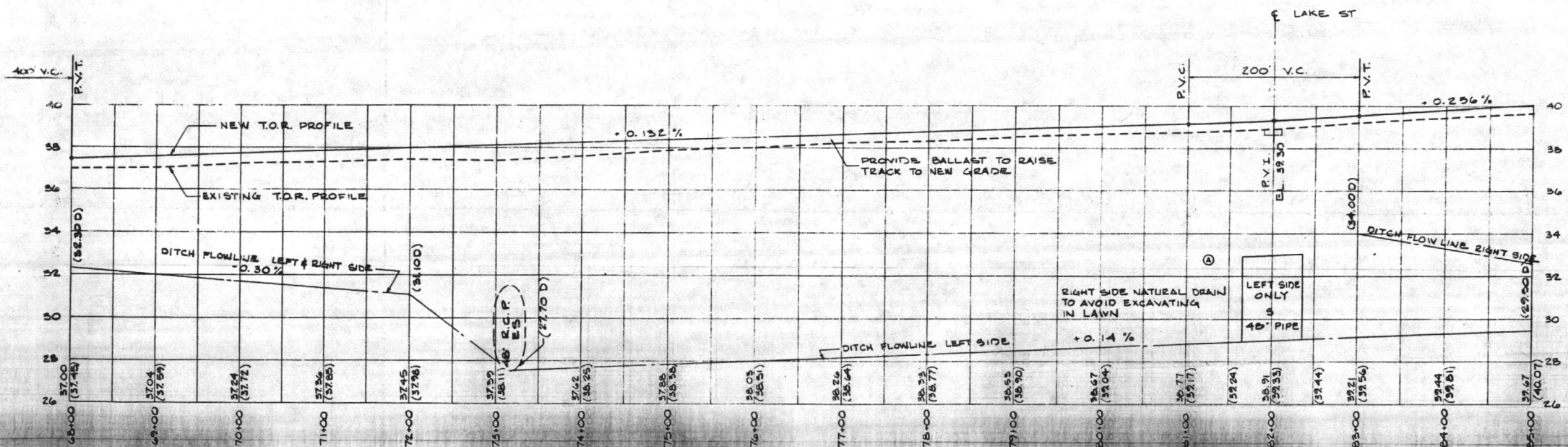
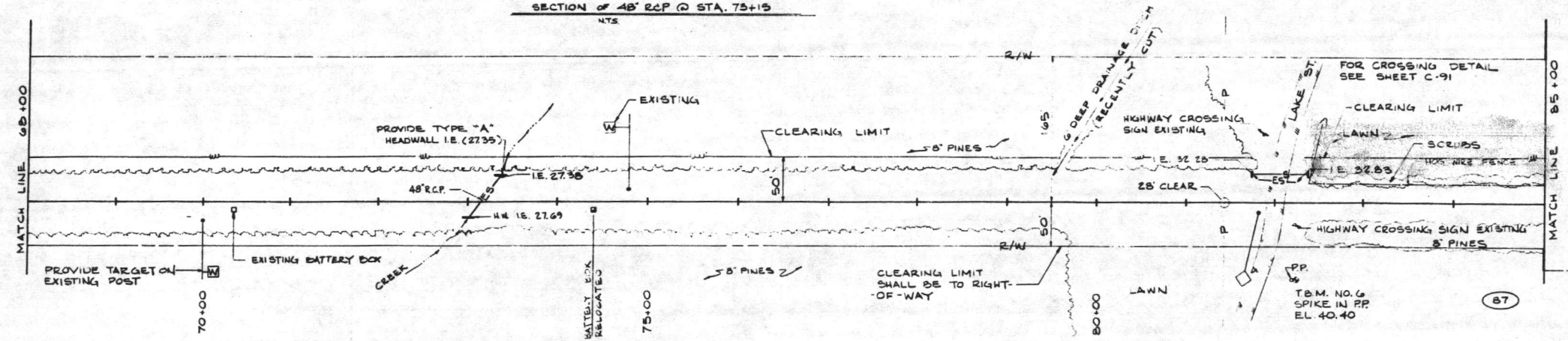
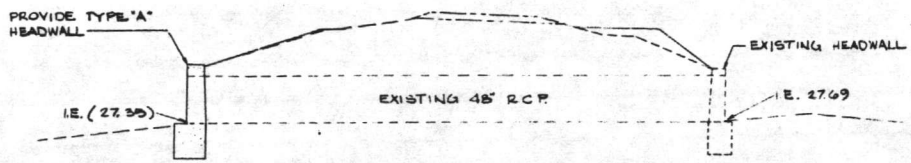
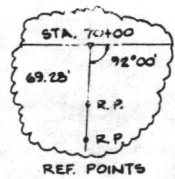


REVISED AS-BUILT	DATE	APPROVED
	1987	



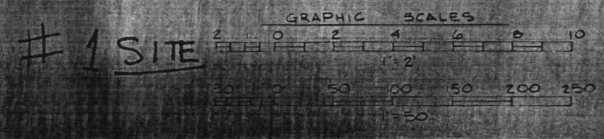
**RECORD DRAWING**  
**LETTER DATED** 17 AUG, 1987  
**C-5**

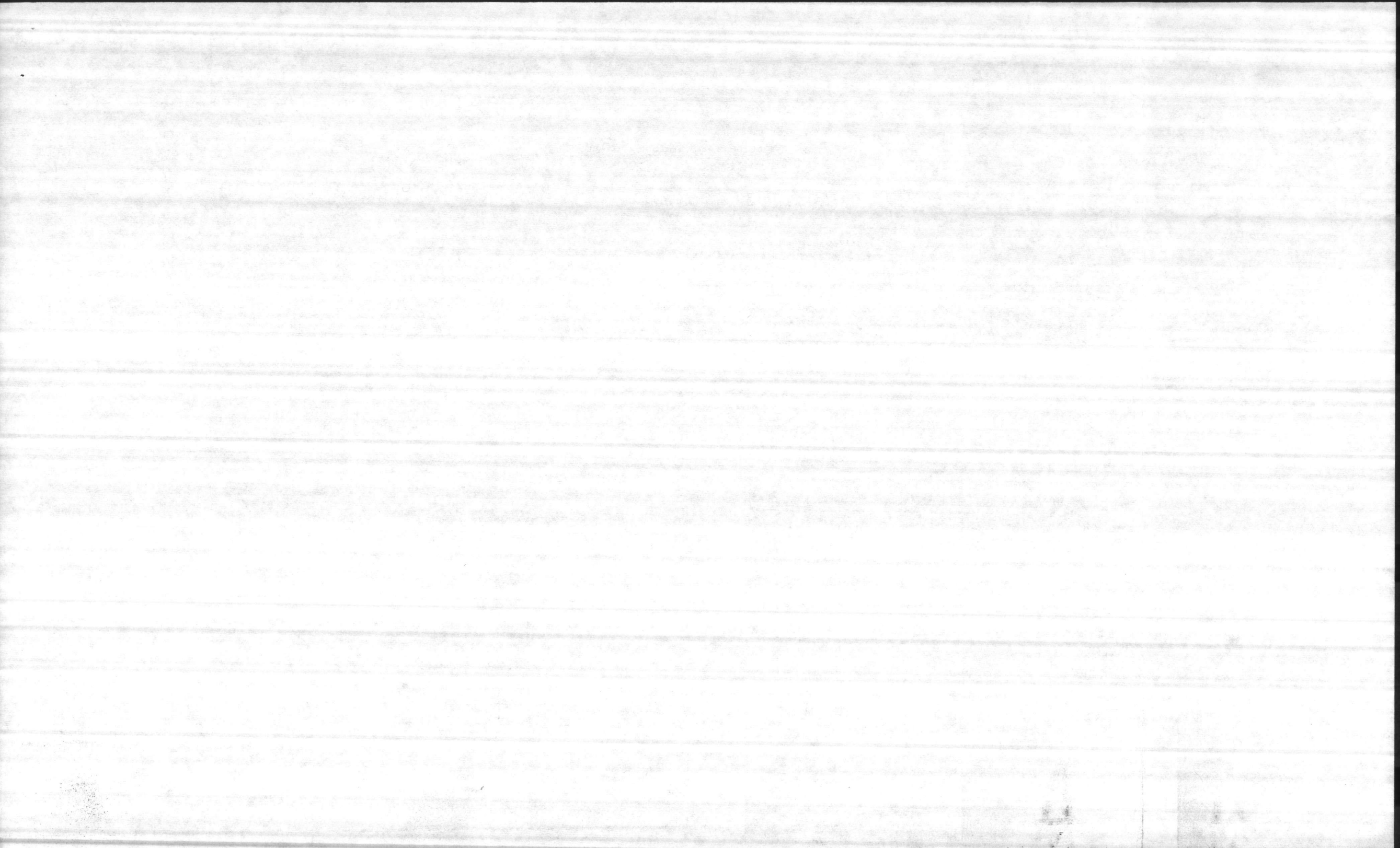
DAVIS & FLOYD, INC.  
CONSULTING ENGINEERS  
GREENWOOD, SOUTH CAROLINA

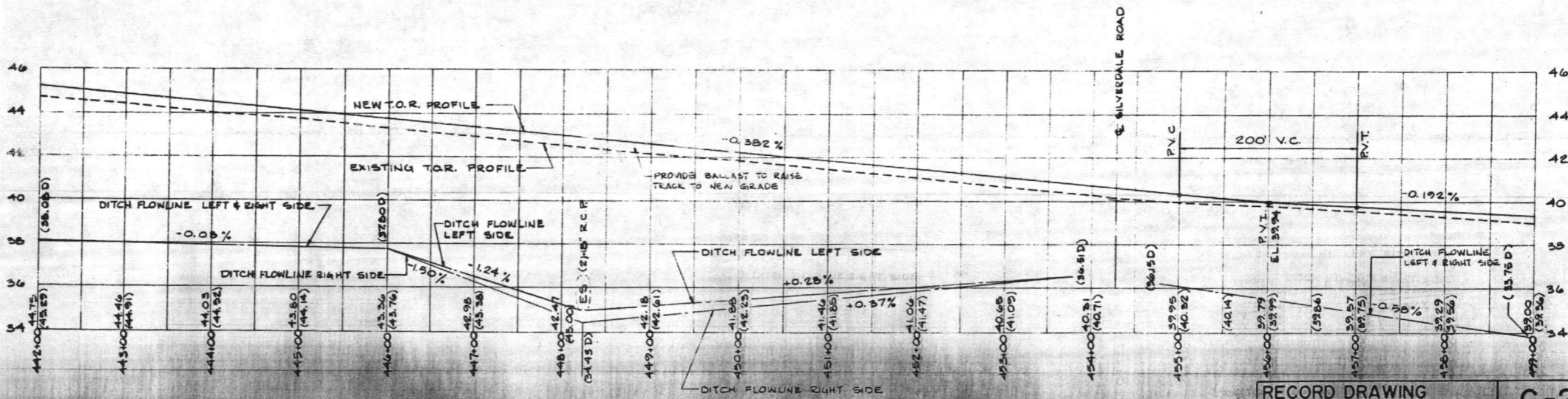
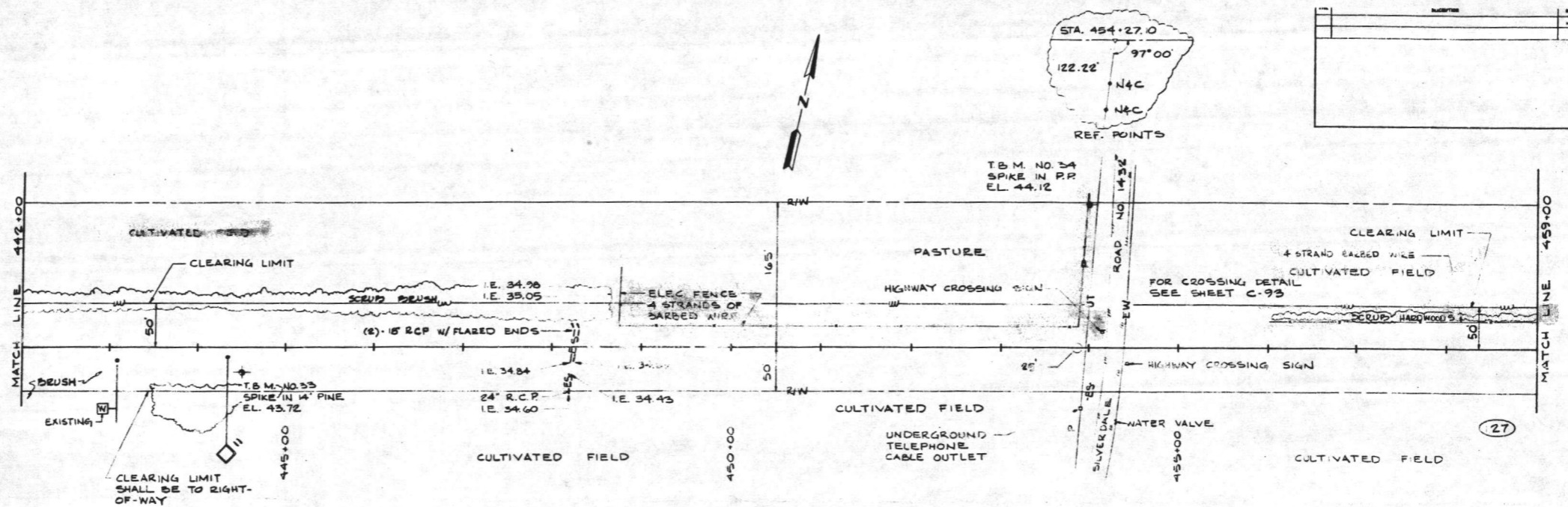
DEPARTMENT OF THE NAVY  
NAVAL FACILITIES ENGINEERING COMMAND  
ATLANTIC DIVISION  
MARINE CORPS BASE CAMP LEJEUNE, NORTH CAROLINA

REPAIR RAILROAD SYSTEM  
(SECOND INCREMENT)  
LEJEUNE R.R. STA. 68+00 TO 85+00

DATE DRAWING 17 AUG 1987  
DRAWN BY [unintelligible]  
CHECKED BY [unintelligible]  
SCALE 1"=50'





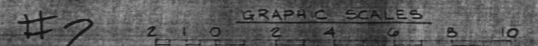


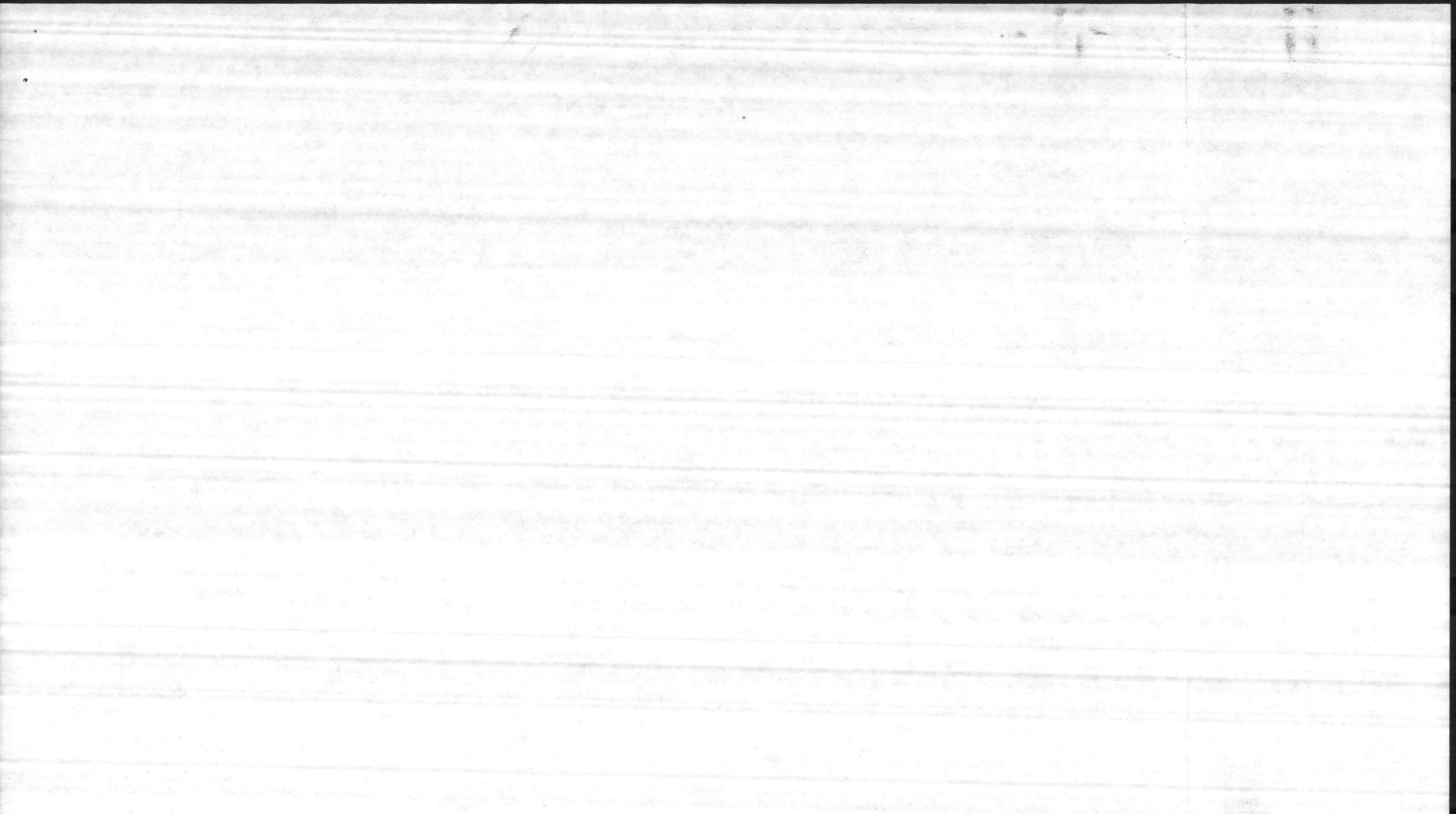
**RECORD DRAWING**  
**LETTER DATED** 17 AUG, 1967  
**C-27**

DAVID B. FLOTT, INC.  
 CONSULTING ENGINEERS  
 GREENWOOD, SOUTH CAROLINA

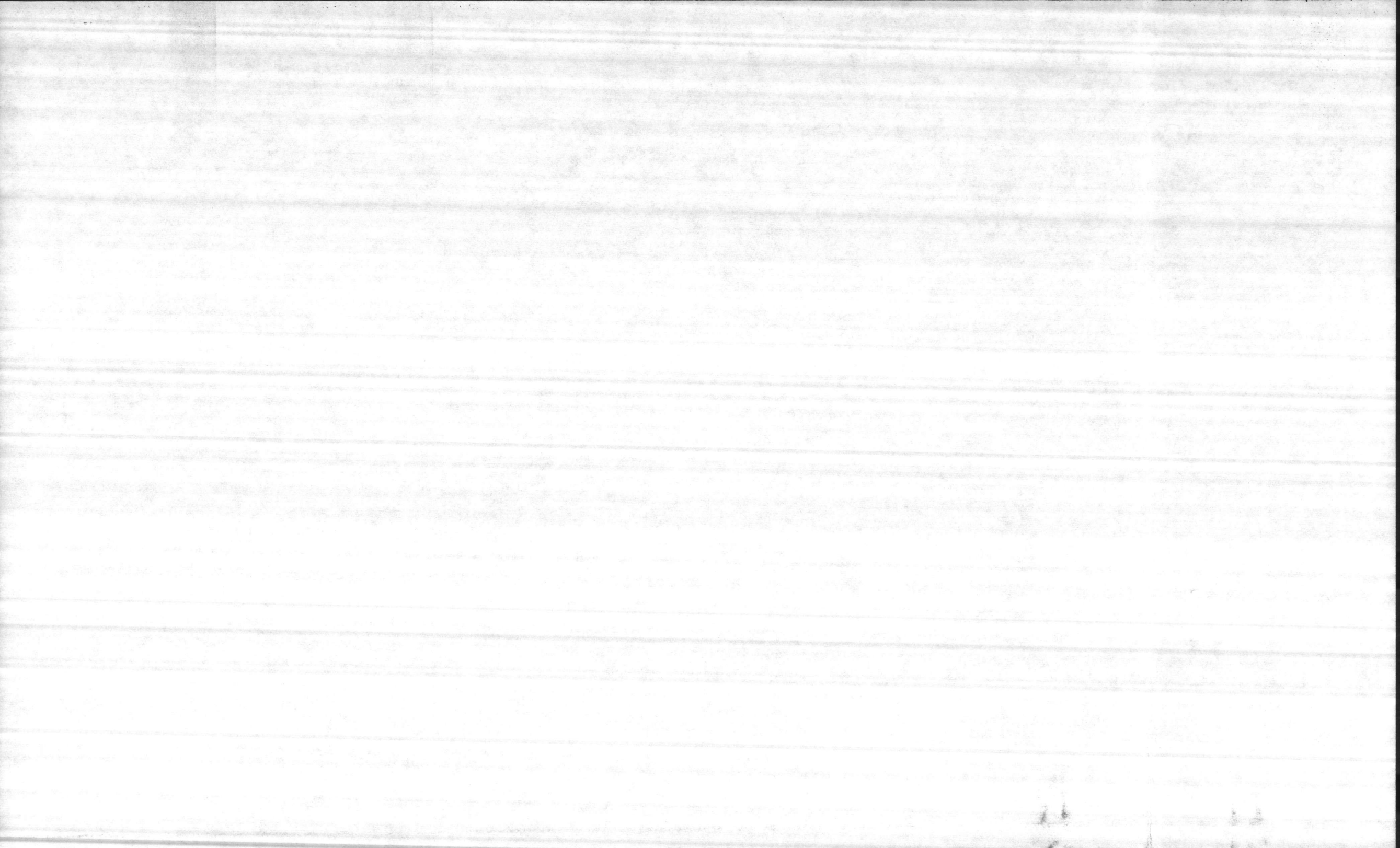
NAVY  
 NAVAL FACILITIES ENGINEERING COMMAND  
 ATLANTIC DIVISION  
 NORFOLK, VA

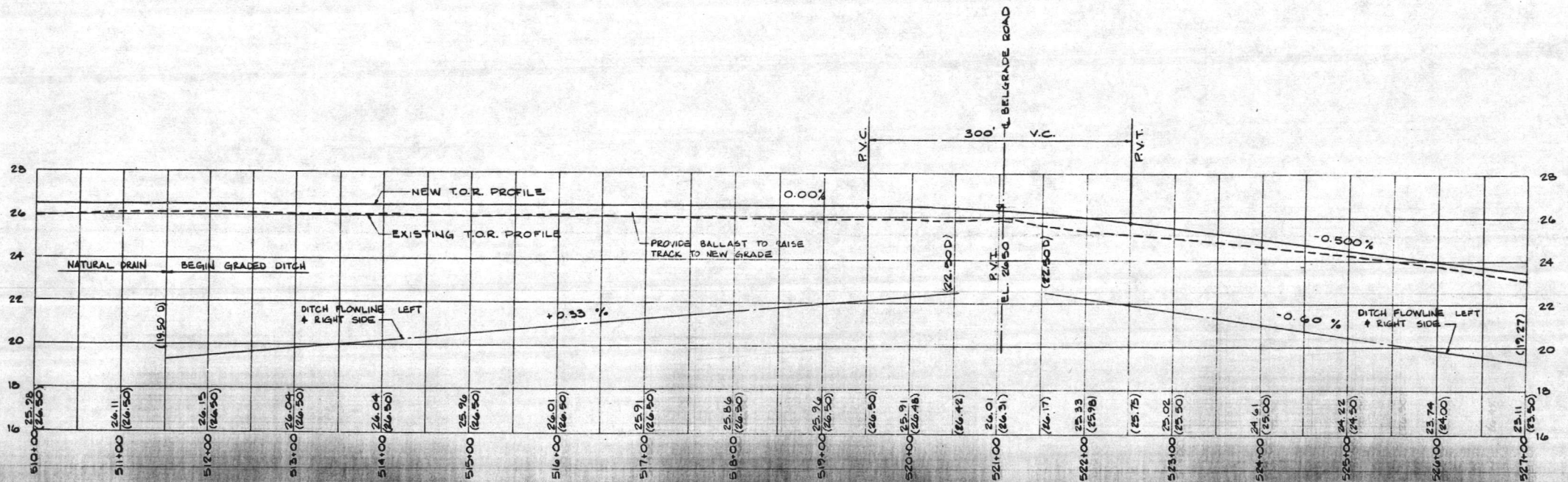
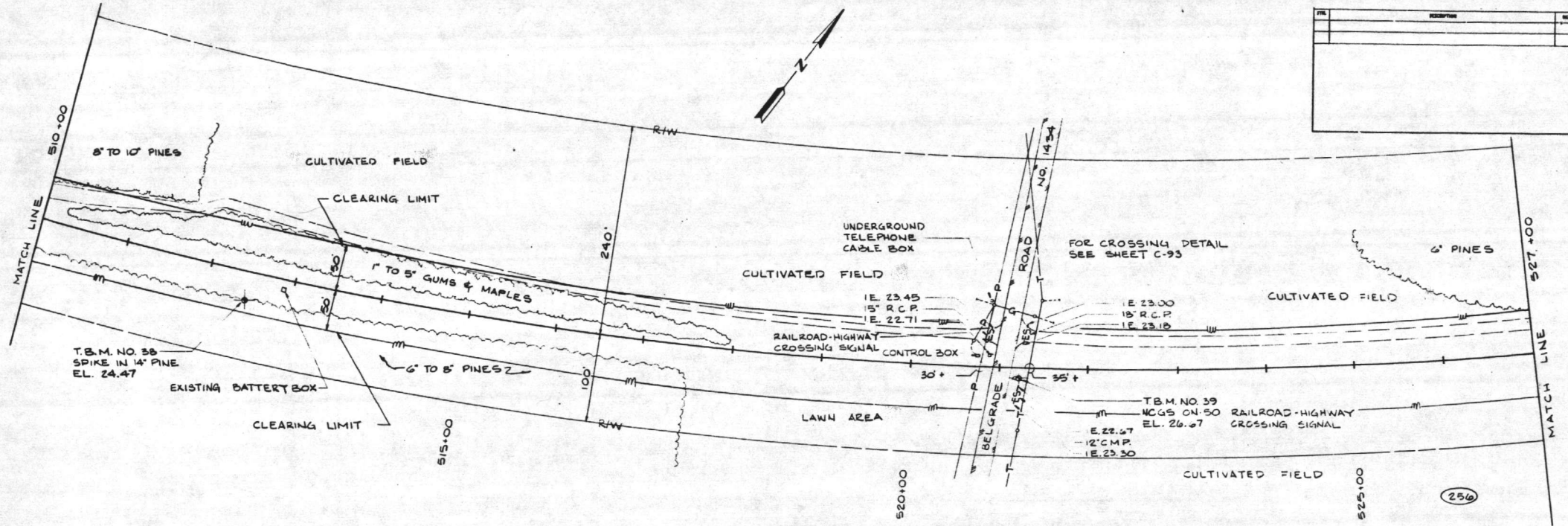
NAVAL STATION  
 MARINE CORPS BASE CAMP LEONE NORTH CAROLINA  
 REPAIR RAILROAD SYSTEM











RECORD DRAWING  
LETTER DATED 17 AUG, 1987

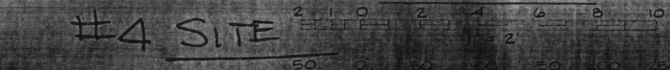
C-31

DEPARTMENT OF THE NAVY - NAVAL FACILITIES ENGINEERING COMBAND  
CONSULTING ENGINEERS  
GREENWOOD, SOUTH CAROLINA

ATLANTIC DIVISION  
NORFOLK, VA  
MARINE CORPS BASE - CAMP LEJEUNE, NORTH CAROLINA  
REPAIR RAILROAD SYSTEM  
(SECOND INCREMENT)  
LEJEUNE NA STA 10000 TO 527+00

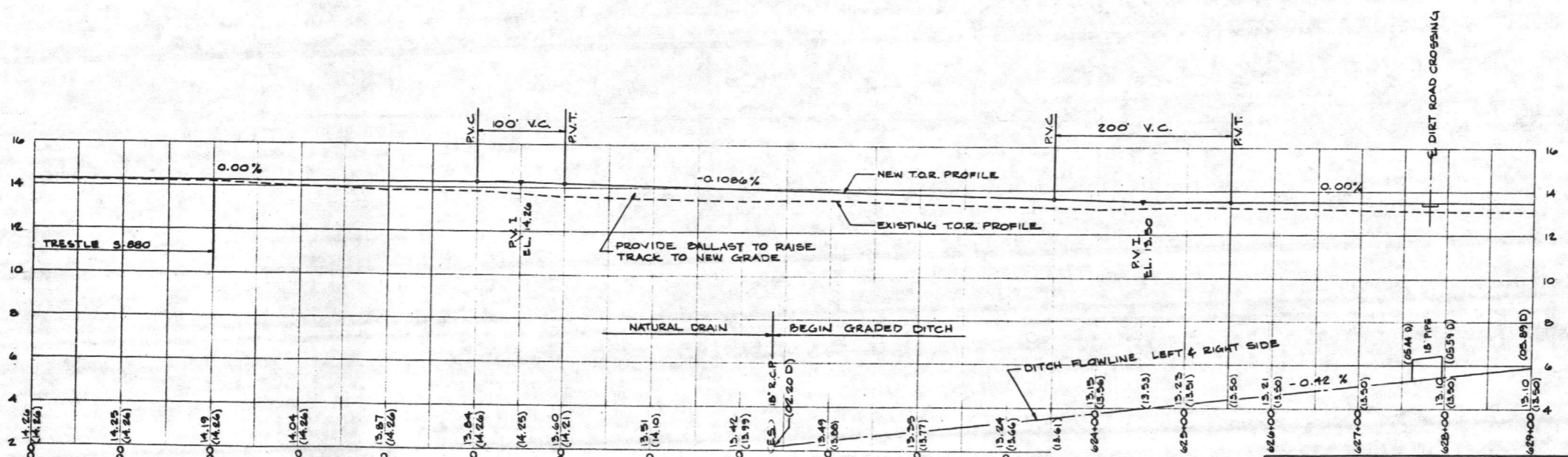
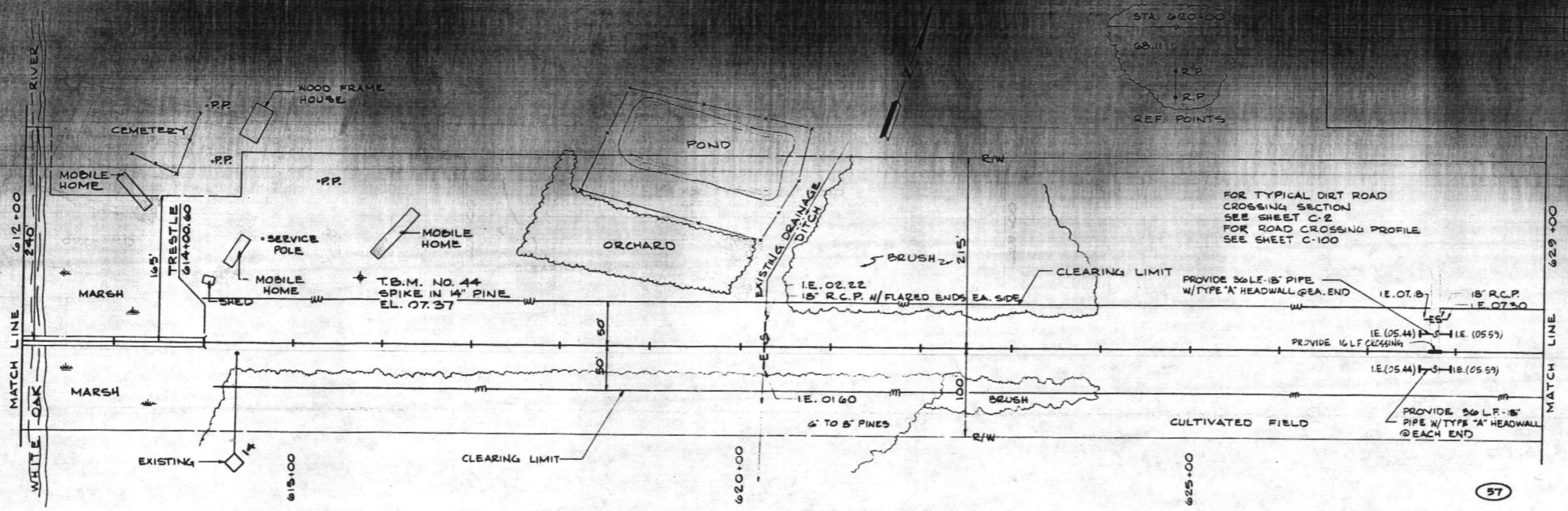
#4 SITE

GRAPHIC SCALES

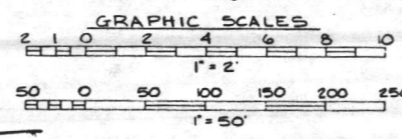








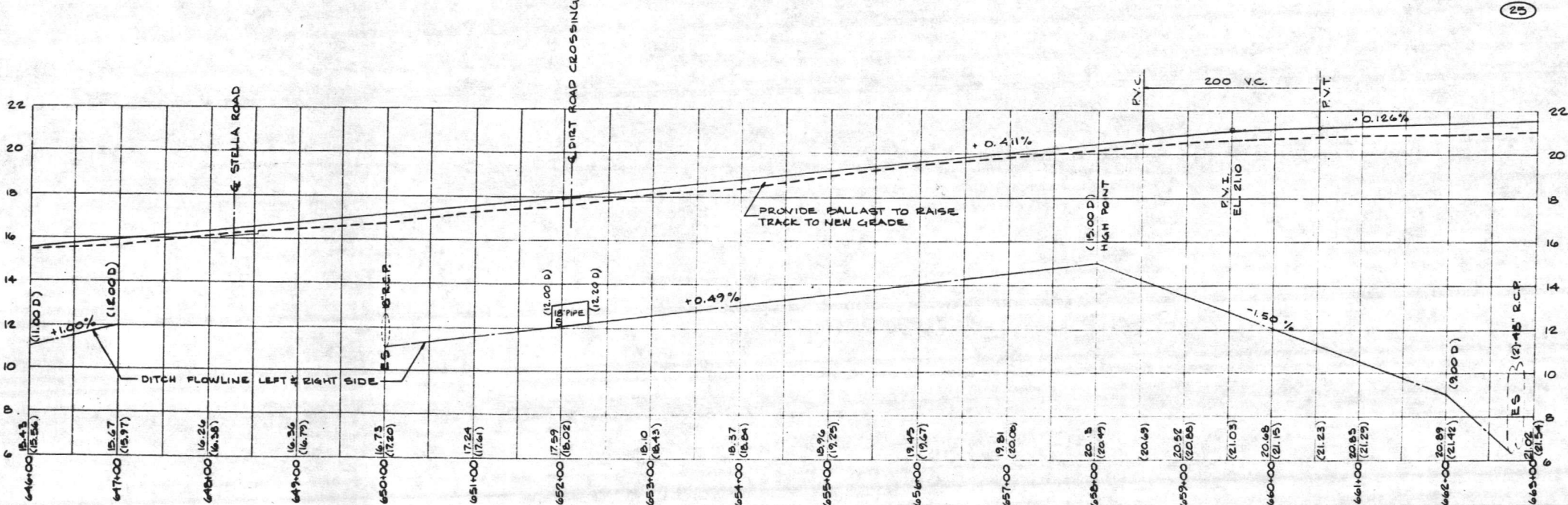
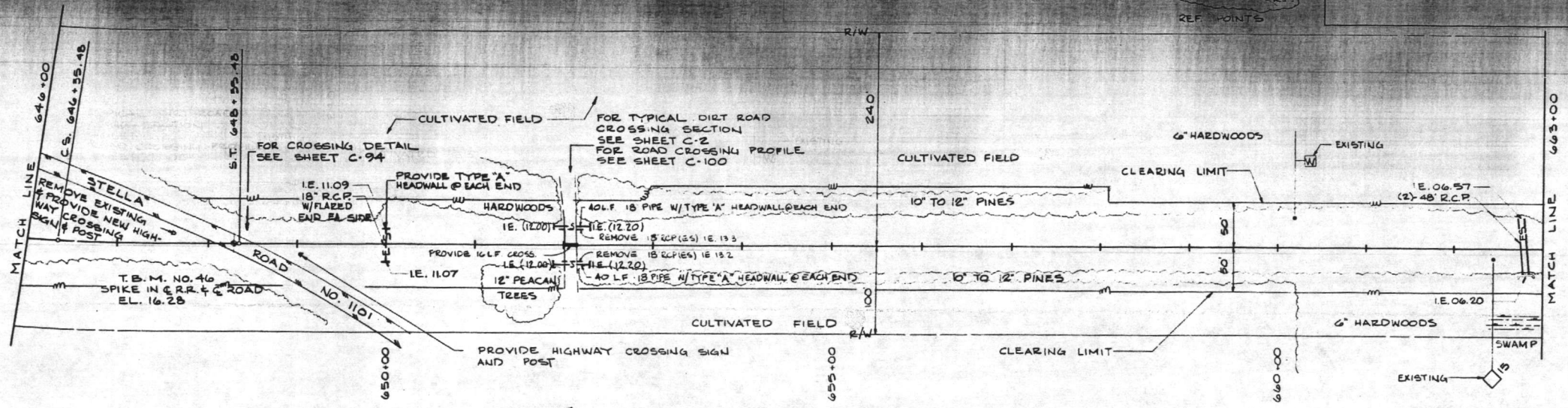
#5 SITE



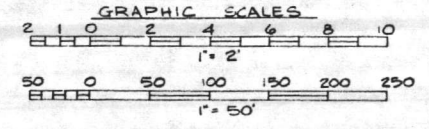
**RECORD DRAWING LETTER DATED 17 AUG 1987 C-37**

DAVIS & FLOYD, INC. CONSULTING ENGINEERS GREENWOOD, SOUTH CAROLINA	DEPARTMENT OF THE NAVY NAVAL FACILITIES ENGINEERING CENTER ATLANTIC DIVISION NAVAL STATION MARINE CORPS BASE CAMP LEJEUNE, NORTH CAROLINA
PROJECT NO. 218838 JOB ORDER NO. 1183441 SHEET NO. 416838-1 DATE 11/1/86	LEJEUNE R.R. STA. 612+00 TO 629+00
APPROVED DATE ACTIVITY SATISFACTORY TO	SIZE 8009H DRAWING NUMBER 416838 COMPTON CONT. NO. 162470-93-B-34

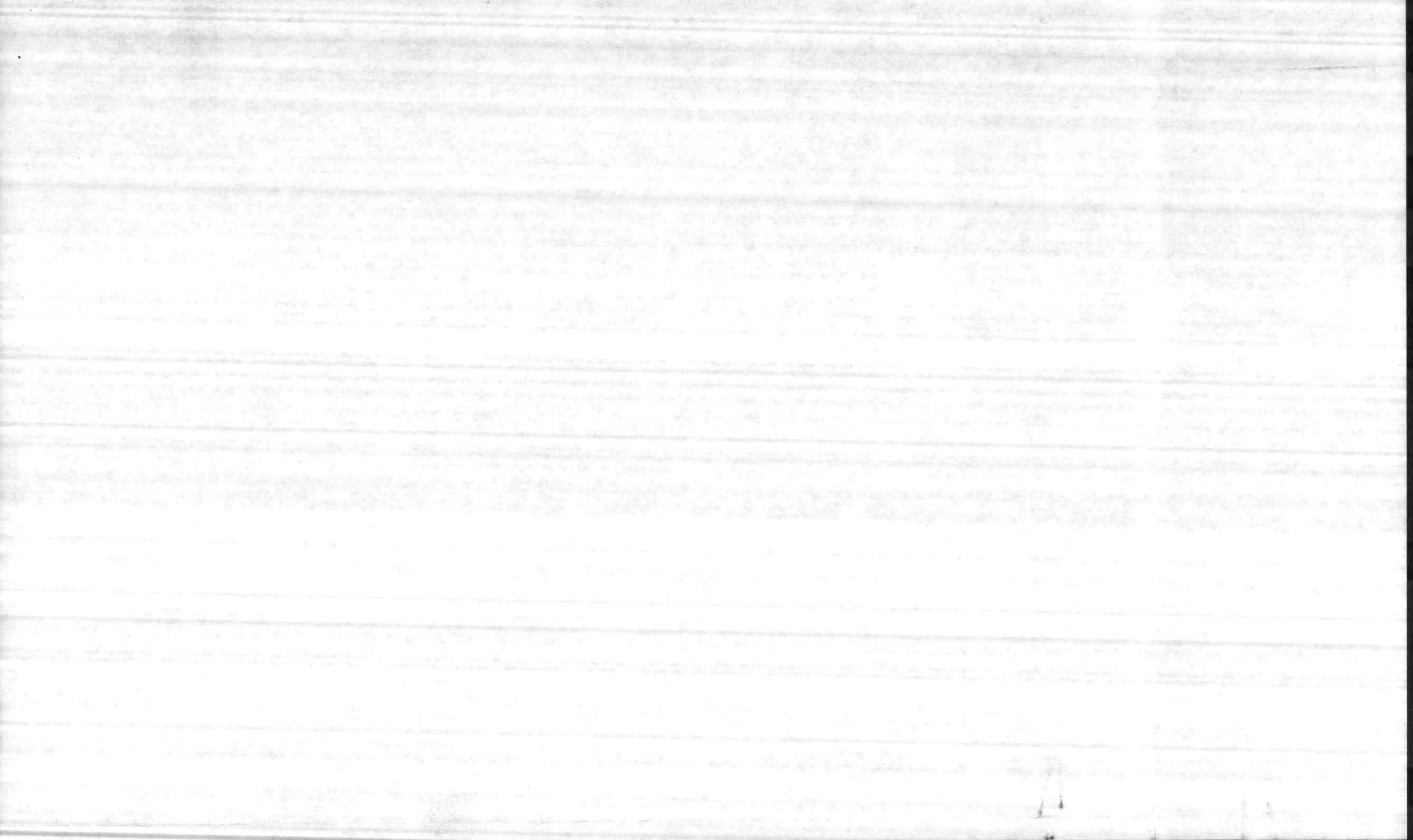




#6 SITE

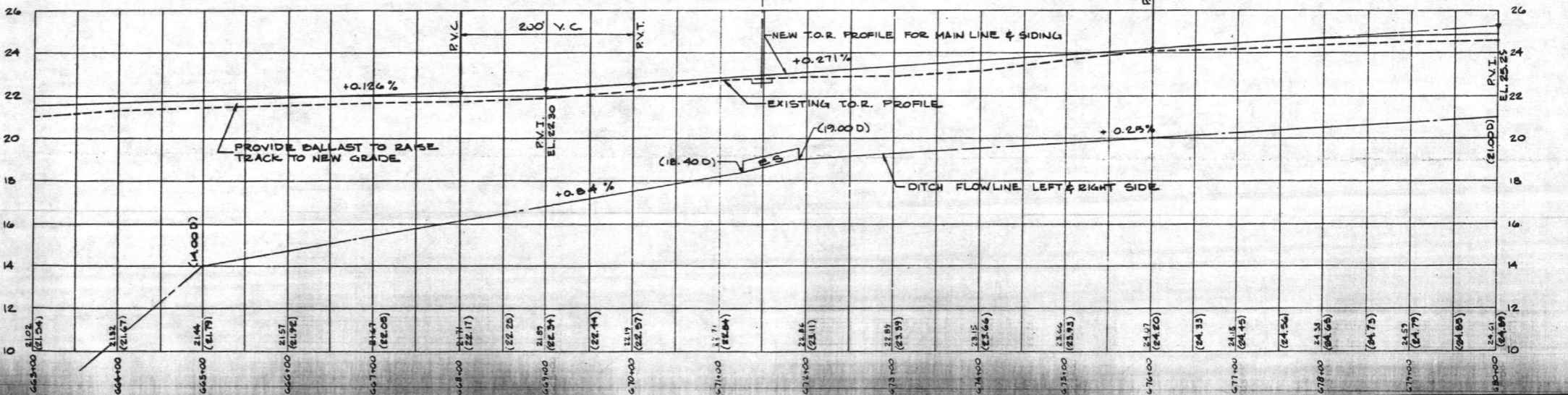
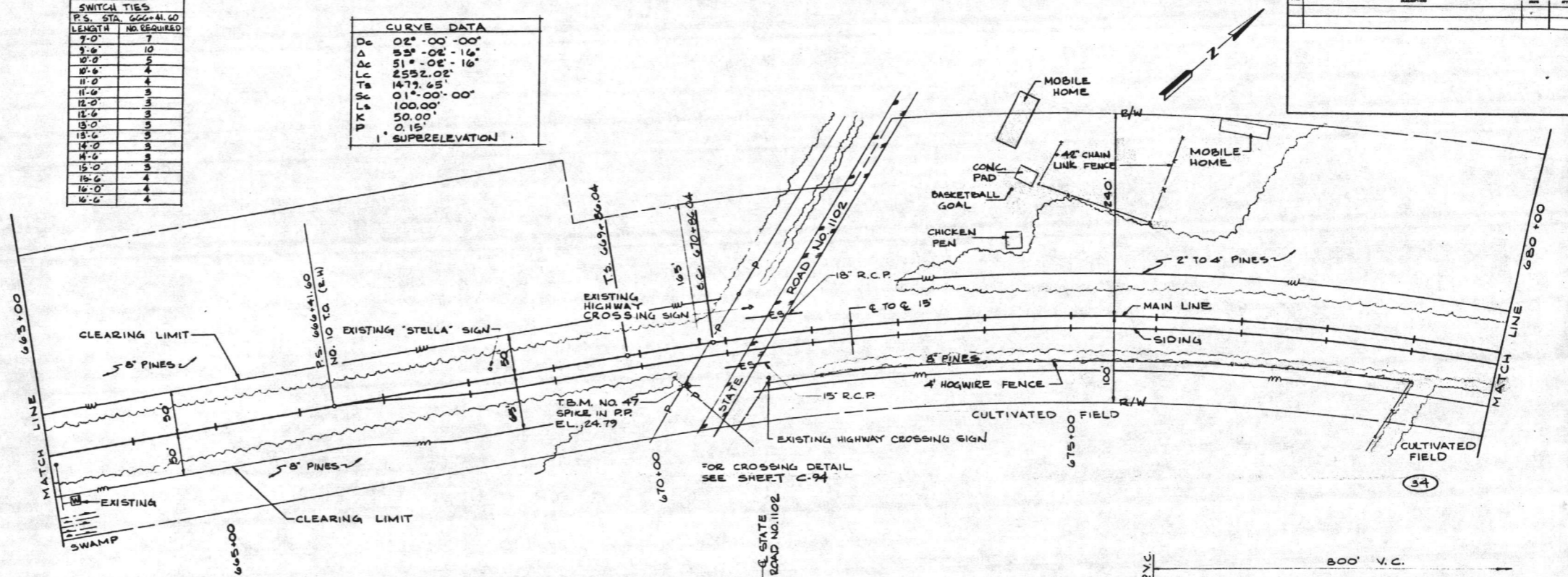


<b>RECORD DRAWING</b>		<b>LETTER DATED</b>		<b>17 AUG. 1967</b>		<b>C-39</b>	
DAVIS & FLOYD, INC. CONSULTING ENGINEERS GREENWOOD, SOUTH CAROLINA		DEPARTMENT OF THE NAVY NAVAL FACILITIES ENGINEERING CENTER ATLANTIC DIVISION		NAVAL STATION MARINE CORPS BASE CAMP LEJEUNE, NORTH CAROLINA		NORFOLK	
PROJECT NO. 216840		JOB ORDER NO. 17 1841		STA. PROJ. NO. LE410MS		DRAWN BY: [Signature]	
DESIGNED BY: [Signature]		CHECKED BY: [Signature]		APPROVED BY: [Signature]		DATE: [Signature]	
ACTIVITY: SATISFACTORY TO		DATE: 7/27/67		F 80091		416840	

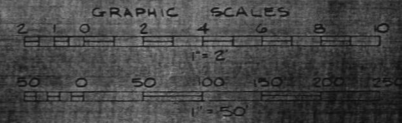


SWITCH TIES	
LENGTH	NO. REQUIRED
7'-0"	7
9'-0"	10
10'-0"	5
10'-6"	4
11'-0"	4
11'-6"	3
12'-0"	3
12'-6"	3
13'-0"	5
13'-6"	3
14'-0"	3
14'-6"	3
15'-0"	3
15'-6"	4
16'-0"	4
16'-6"	4

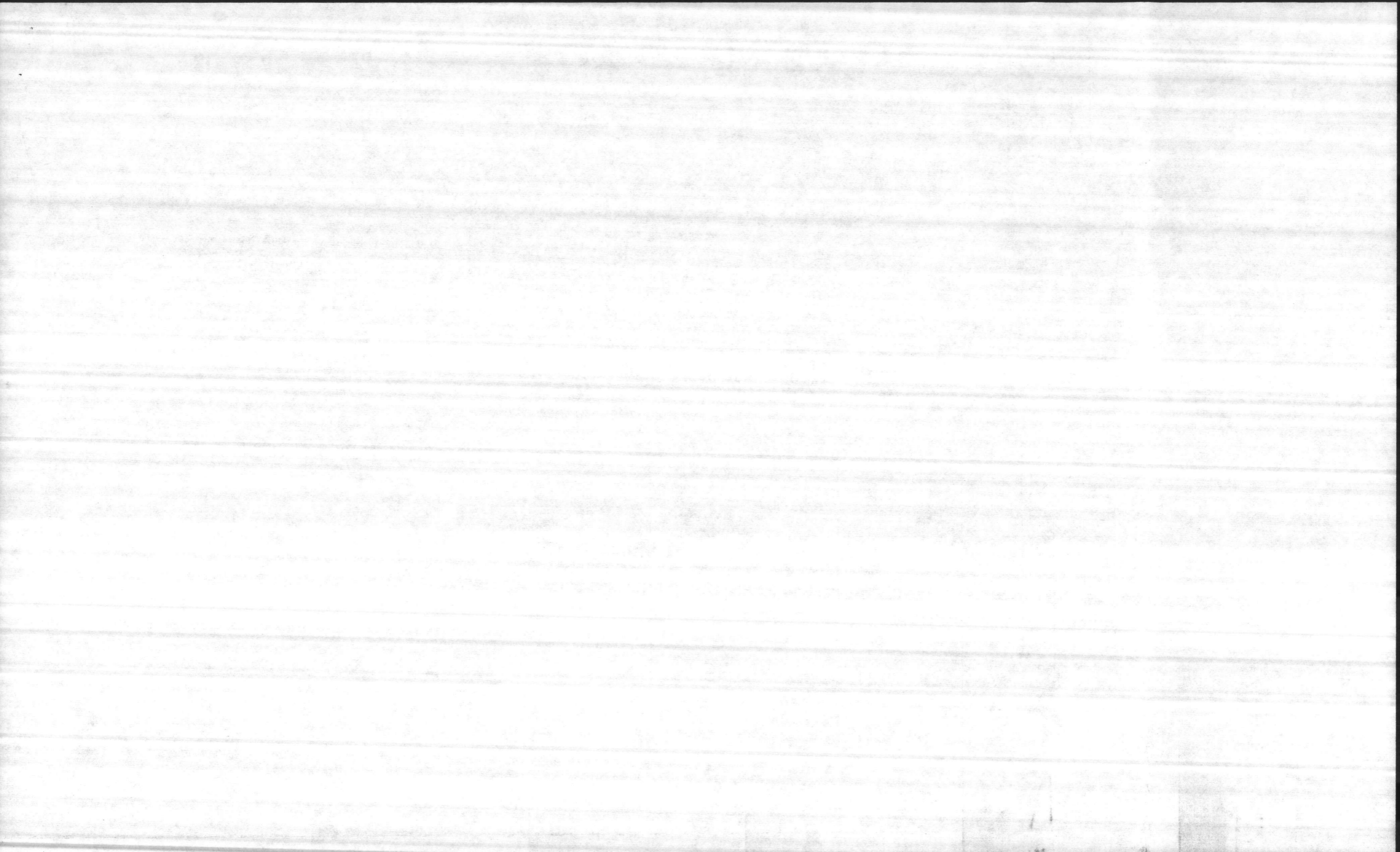
CURVE DATA	
PC	02'-00'-00"
PT	53'-02'-16"
LC	51'-02'-16"
CE	2552.02'
EA	1473.65'
EB	01'-00'-00"
EC	100.00'
ED	50.00'
EA	0.15'
1" SUPERELEVATION	

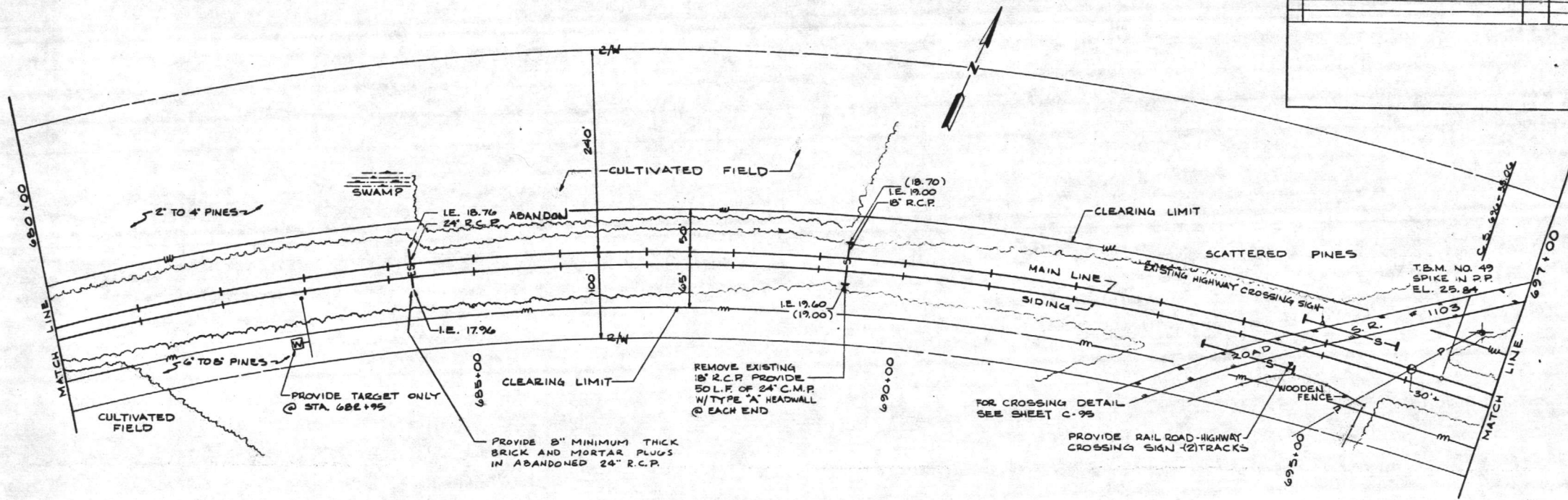


# 7 SITE

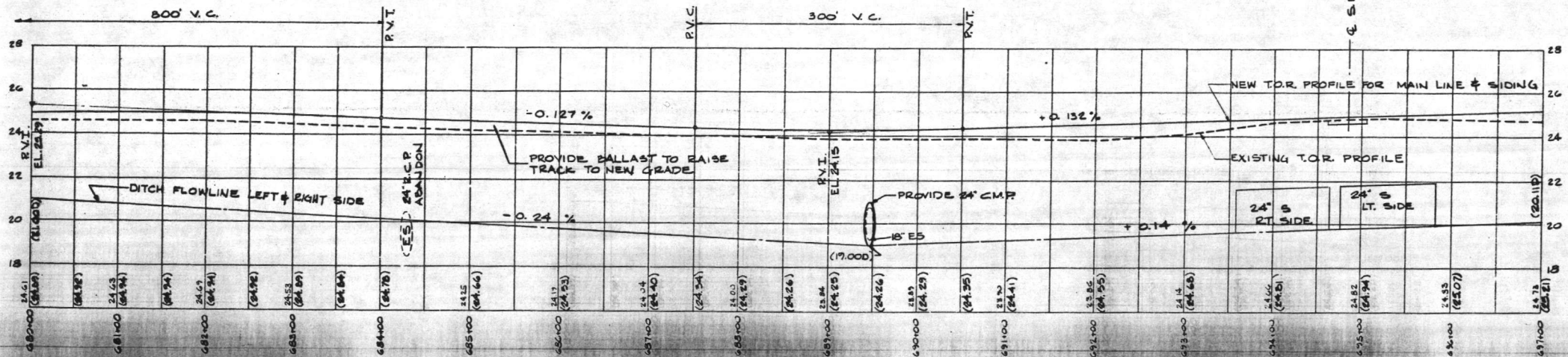


<b>RECORD DRAWING</b>		<b>C-40</b>	
LETTER DATED		17 AUG. 1967	
JAVIS & FLOYD, INC. CONSULTING ENGINEERS GREENWOOD, SOUTH CAROLINA		DEPARTMENT OF THE NAVY NAVAL FACILITIES ENGINEERING COMMAND ATLANTIC DIVISION MARINE CORPS BASE CAMP LEJEUNE, NORTH CAROLINA	
PROJECT NO. 24841 JOB NO. 11-13-67 SHEET NO. 11-13-67		NAVAL STATION LEJEUNE R.R. STA. 663+00 TO 680+00	
DATE: 11-13-67		DRAWN BY: [Signature]	
CHECKED BY: [Signature]		APPROVED BY: [Signature]	
CODE: 80091		411684	





(87)



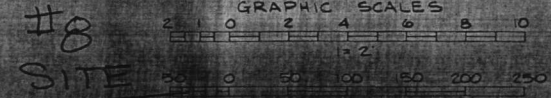
**RECORD DRAWING**  
**LETTER DATED** 17 AUG, 1987  
**C-41**

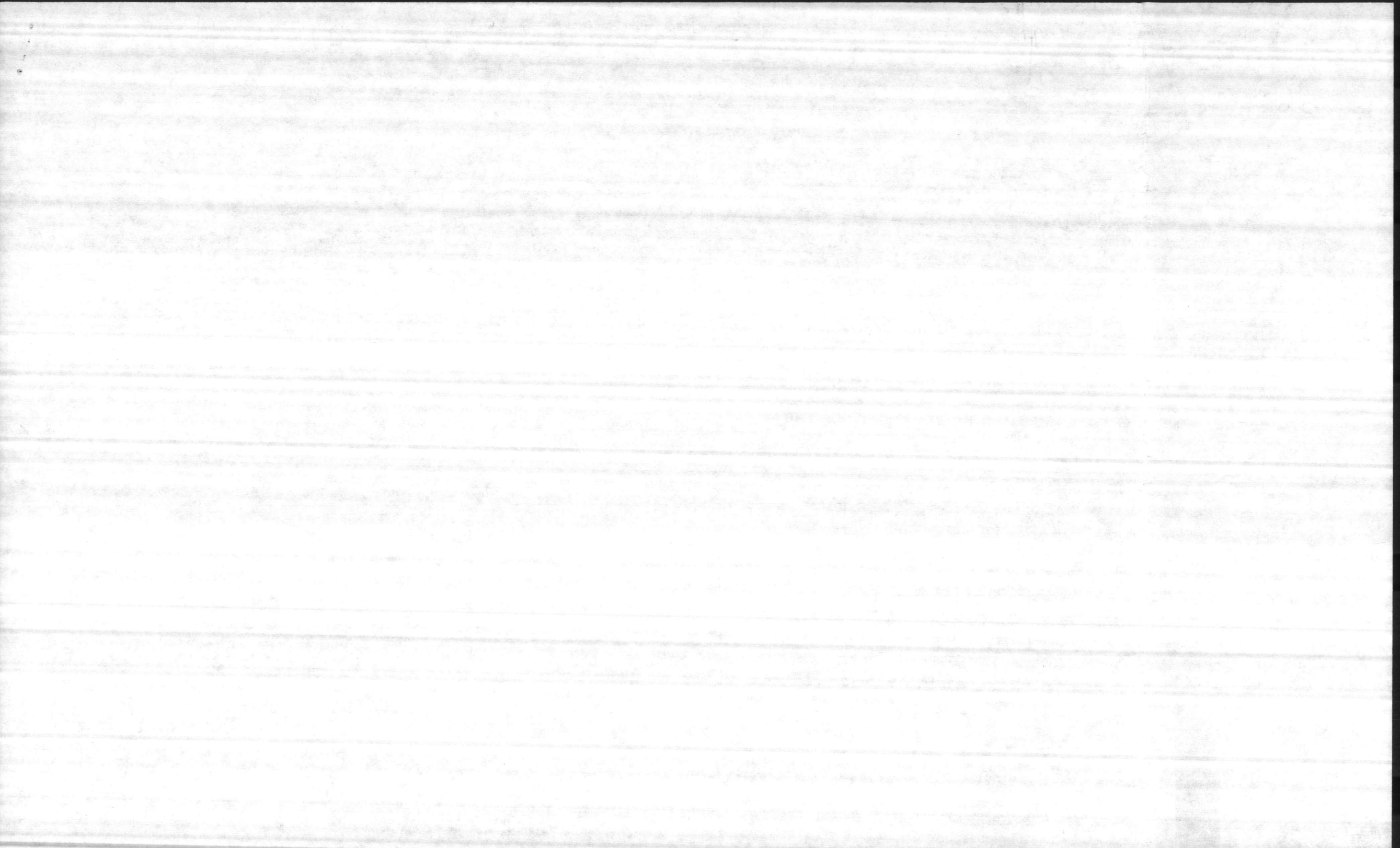
DAVIS & FLOYD, INC.  
CONSULTING ENGINEERS  
GREENWOOD, SOUTH CAROLINA

DEPARTMENT OF THE NAVY  
NAVAL FACILITIES ENGINEERING COMMAND  
ATLANTIC DIVISION  
NAVAL STATION  
MARINE CORPS BASE - CAMP LEJEUNE, NORTH CAROLINA

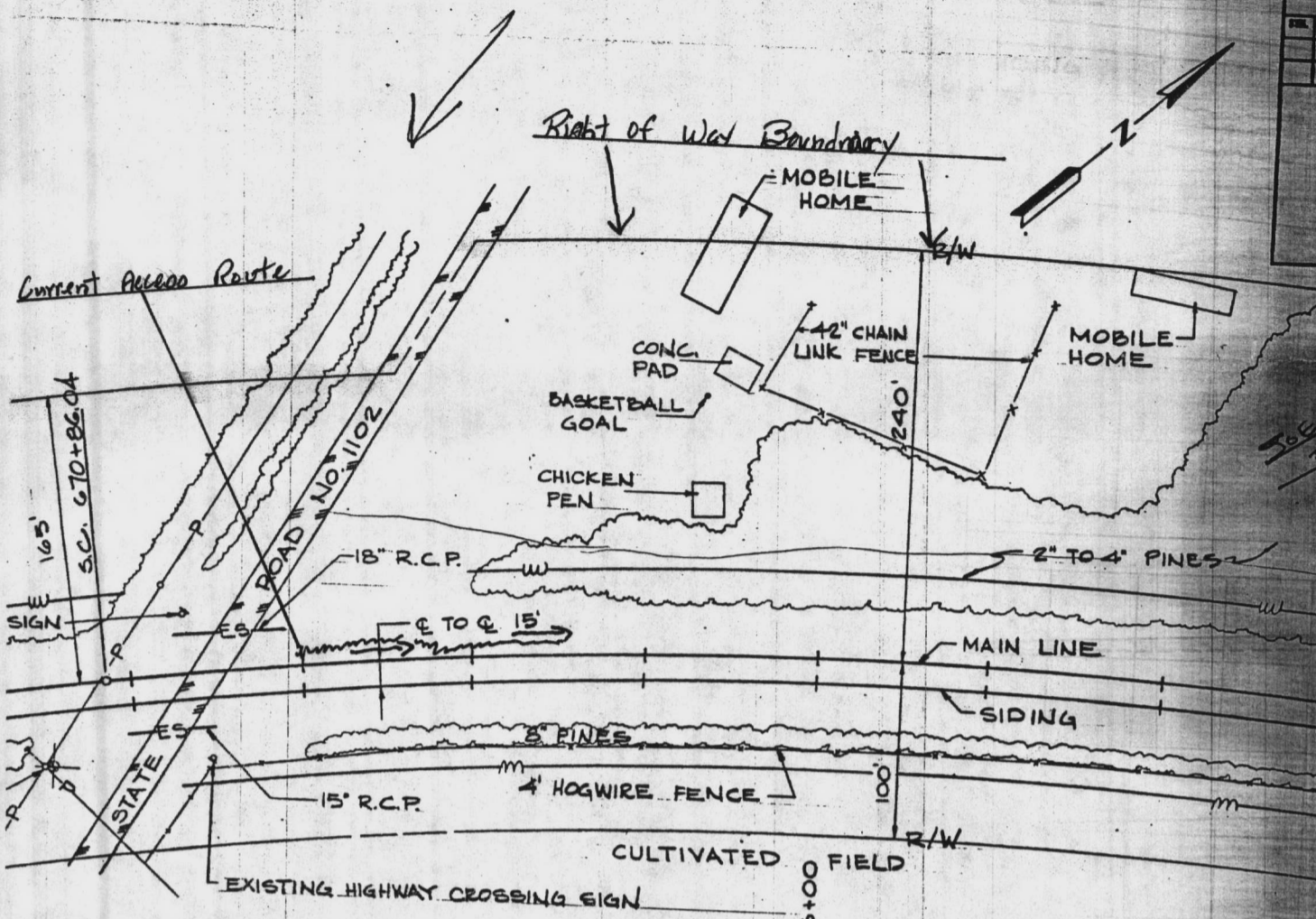
REPAIR RAILROAD SYSTEM  
(SECOND INCREMENT)  
LEJEUNE R.R. STA. 680+00 TO 697+00

NO. 3009 415842









FOR CROSSING DETAIL  
SEE SHEET C-94

