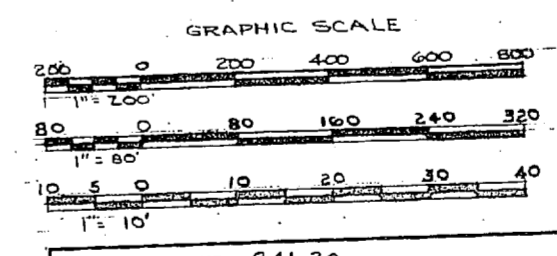


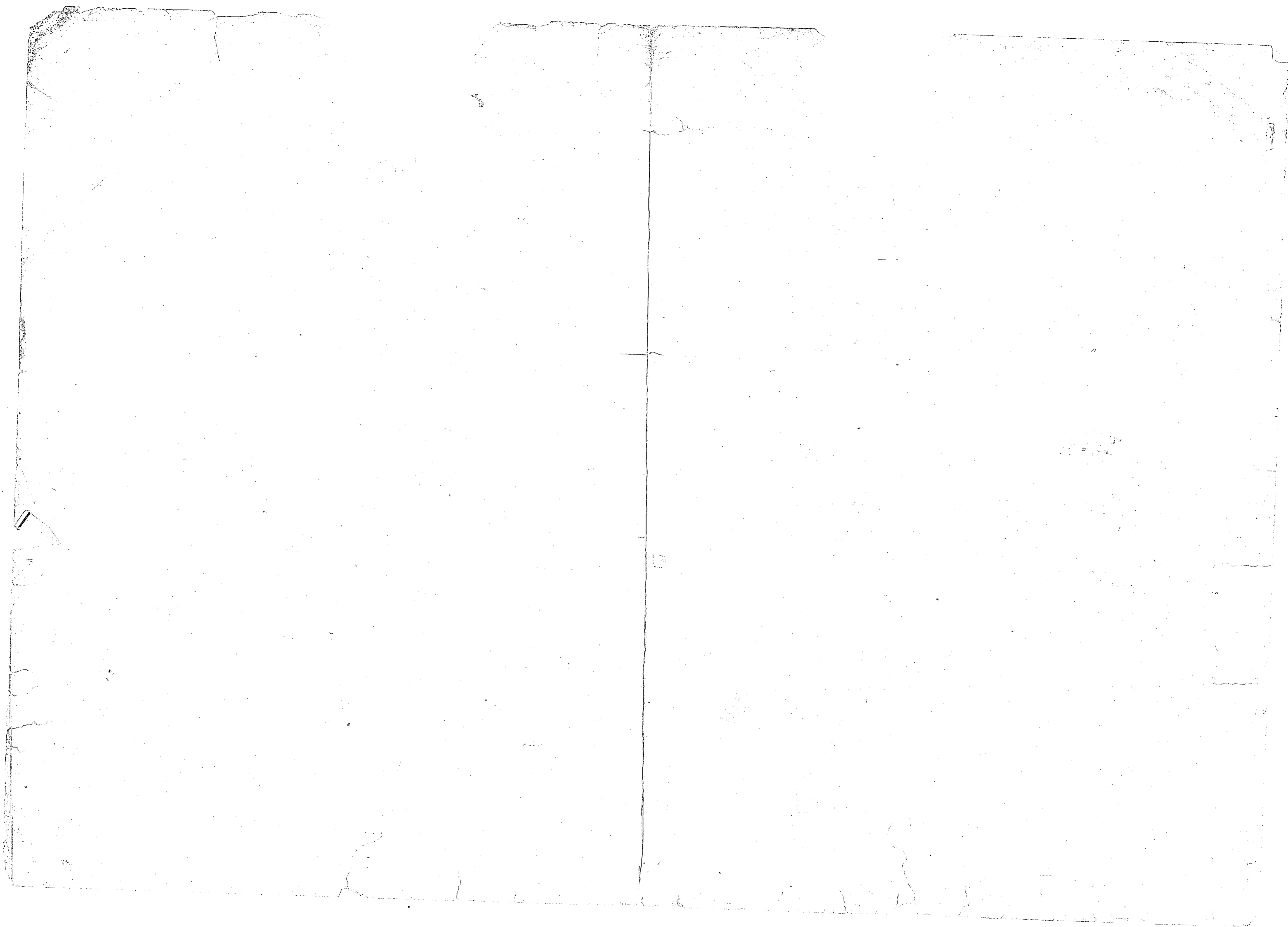
NOTE: THIS IS A HALF-SIZE PRINT - USE GRAPHIC SCALE

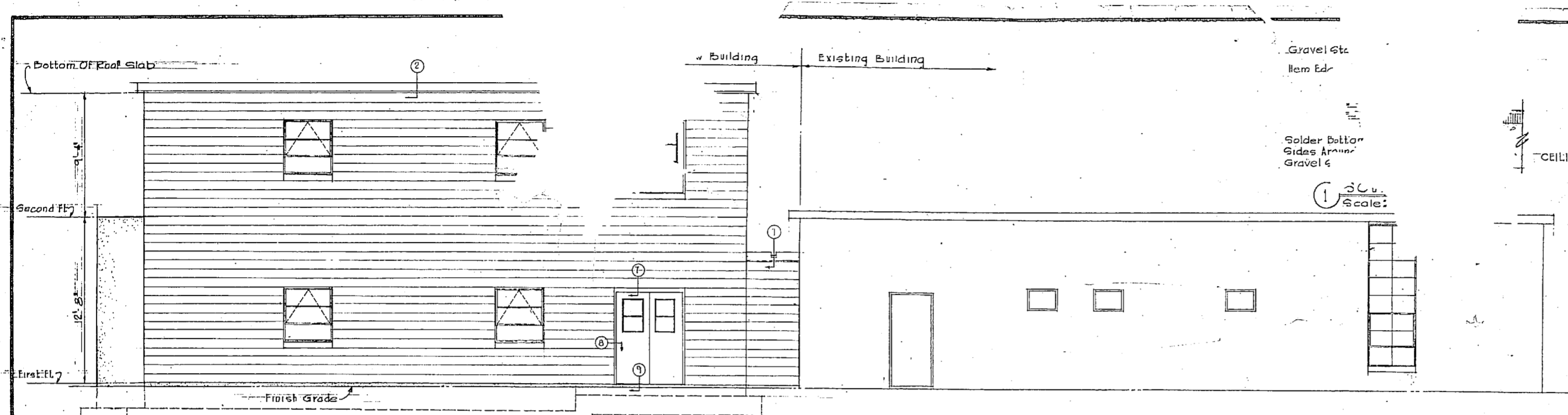


CATEGORY CODE NO. 841 20
 SATISFACTORY TO
 DATE: 10/30/61
 SUBMITTED BY: W. F. FREEMAN, INCORPORATED
 DATE: 10/30/61

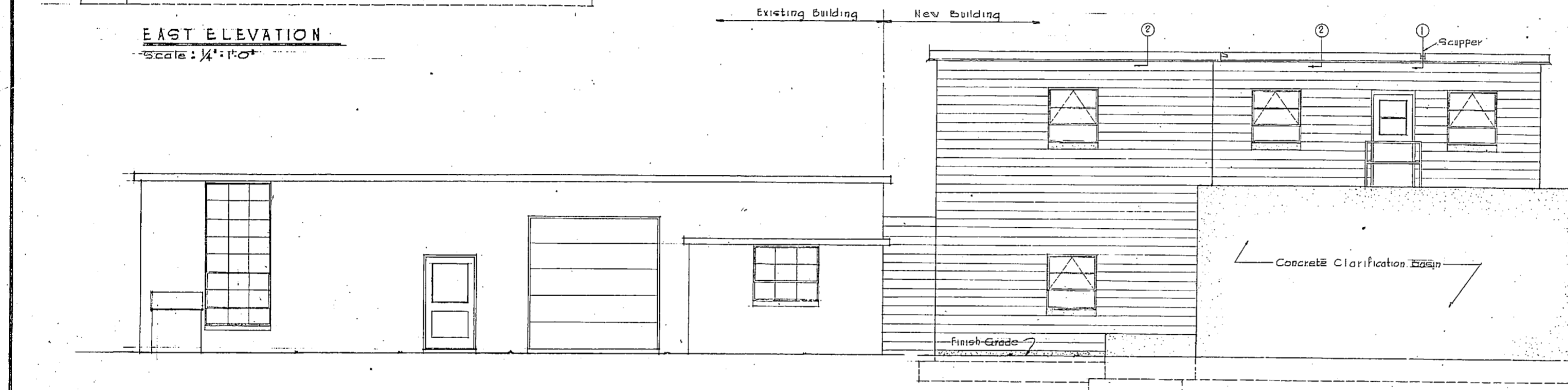
SYMBOL	DESCRIPTION	DATE	APPROVAL
DPWD DRAWING NO. 60121	DEPARTMENT OF THE NAVY DISTRICT PUBLIC WORKS OFFICE ENGINEERS & ARCHITECTS		BUREAU OF YARDS & DOCK NAVAL BASE NORFOLK, VA.
DES. J.M.	W. F. FREEMAN, INCORPORATED		HIGH POINT, NORTH CAROLINA
DRWN. W.W.M. / F.E.	MARINE CORPS AIR FACILITY		NEW RIVER, N.C.
CHK. C.J.H.	EXPANSION OF UTILITIES		
PROJ. ENG. G.E.F.	RAW WATER & WATER		
CHK. ERM.	DISTRIBUTION LINES		
APPROVED BY: Paul A. Ellis	OFFICER IN CHARGE	DATE: 11/7/61	
APPROVED FOR BUREAU OF YARDS & DOCK	SCALE AS NOTED	40139	
		40139	
		7 NOV 1961	
		Y & D DRAWING NO. 88312	

PROPERTY U. S. NAVY DPWO SMD
 NAVAL BASE NORFOLK, VA. TO BE RETURNED NOT LATER
 THAN 21 DAYS AFTER END OF PRINTING

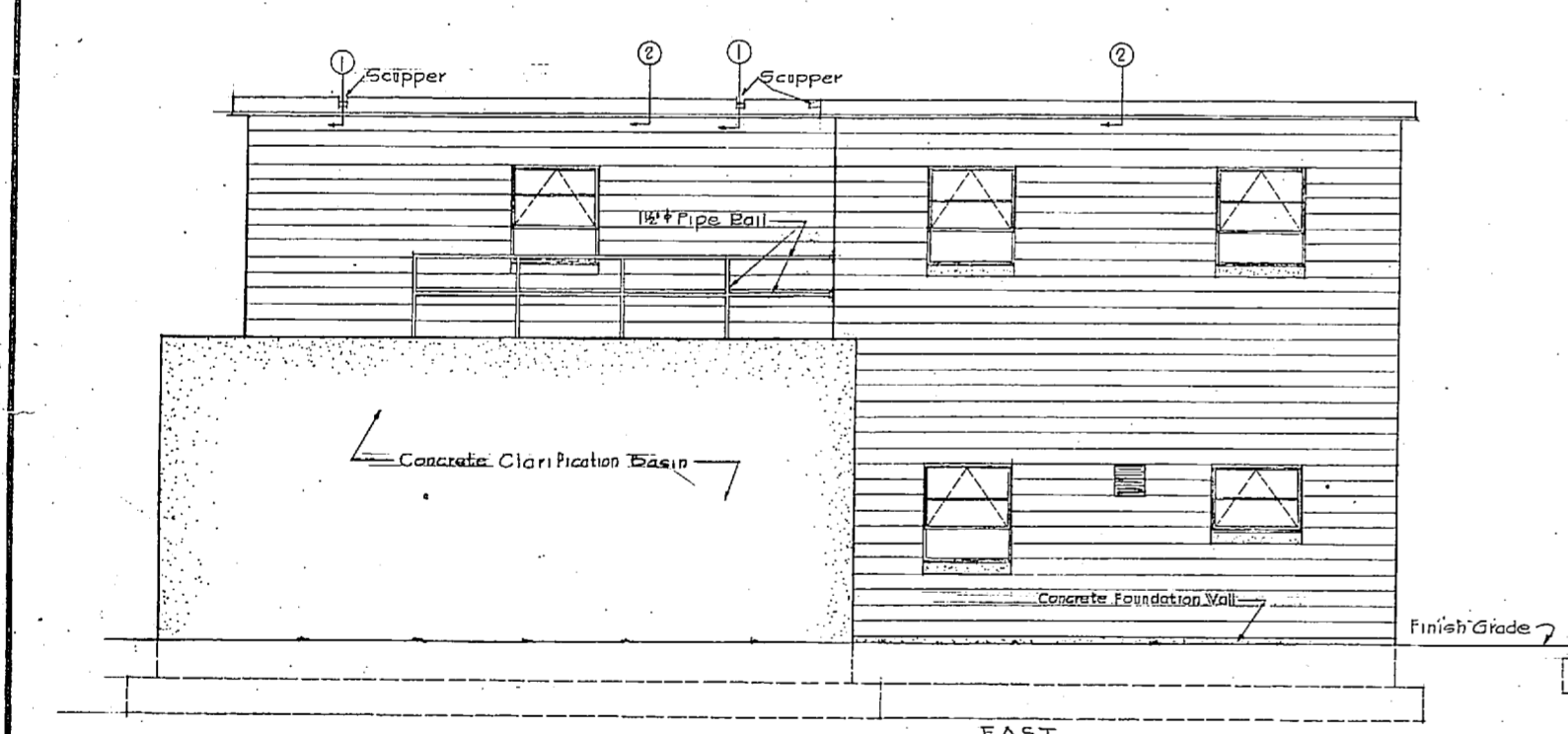




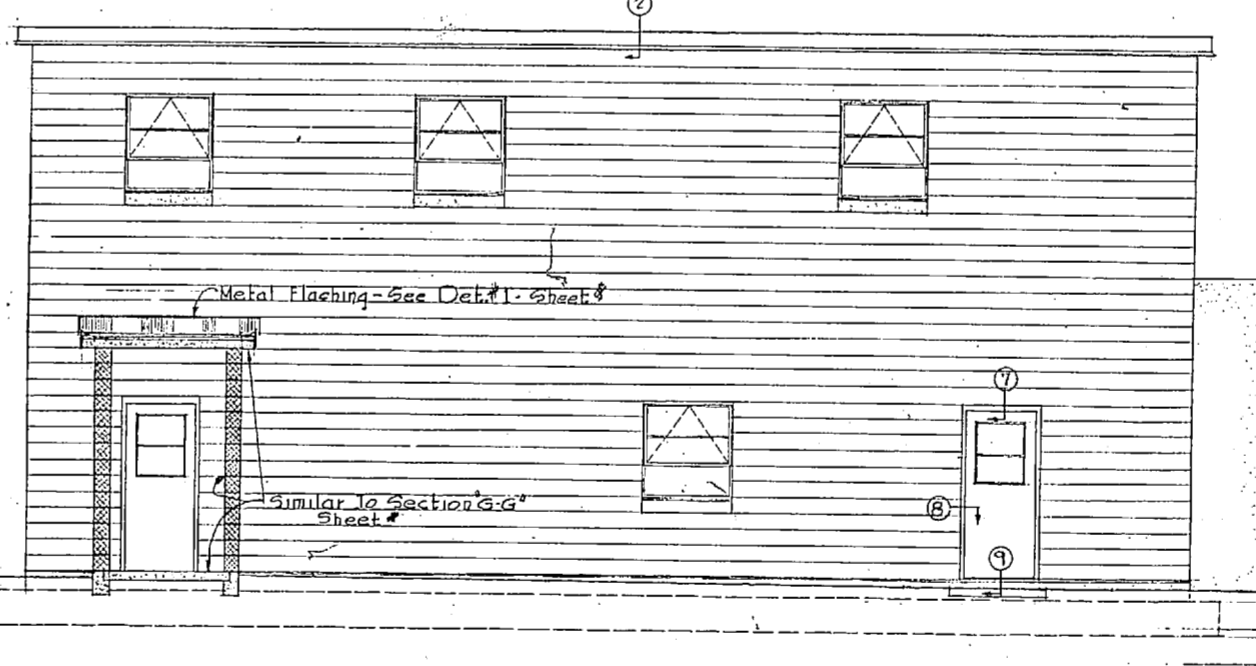
EAST ELEVATION
Scale: 1/4" = 1'-0"



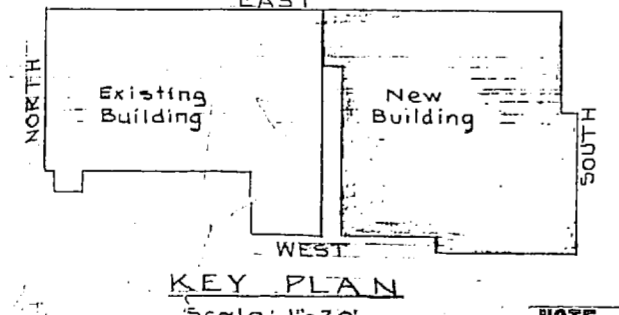
WEST ELEVATION
Scale: 1/4" = 1'-0"



SOUTH ELEVATION
Scale: 1/4" = 1'-0"

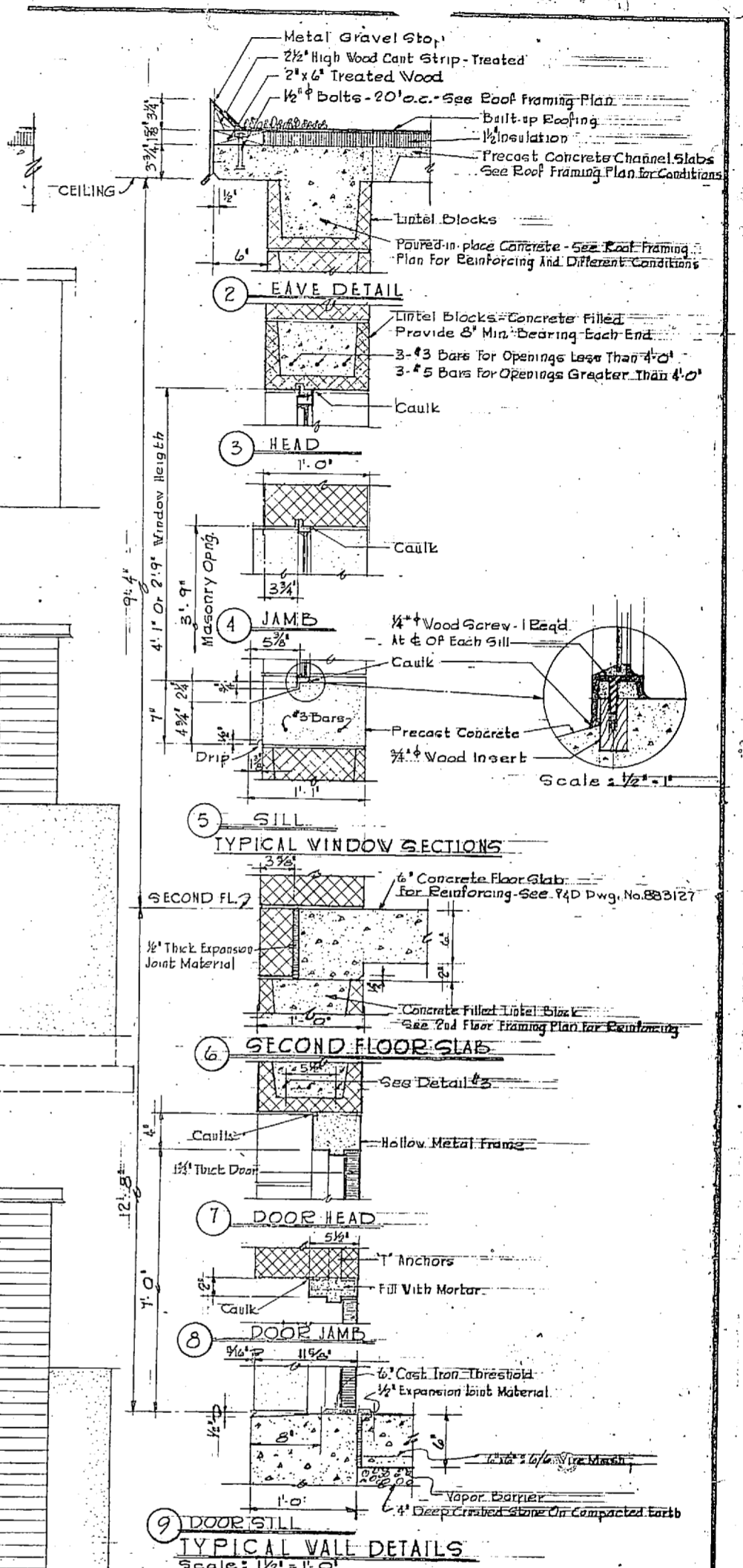


NORTH ELEVATION
Scale: 1/4" = 1'-0"



KEY PLAN
Scale: 1" = 20'

NOTE: THIS IS A HALF-SIZE PRINT - USE GRAPHIC SCALE



TYPICAL WALL DETAILS
Scale: 1 1/2" = 1'-0"

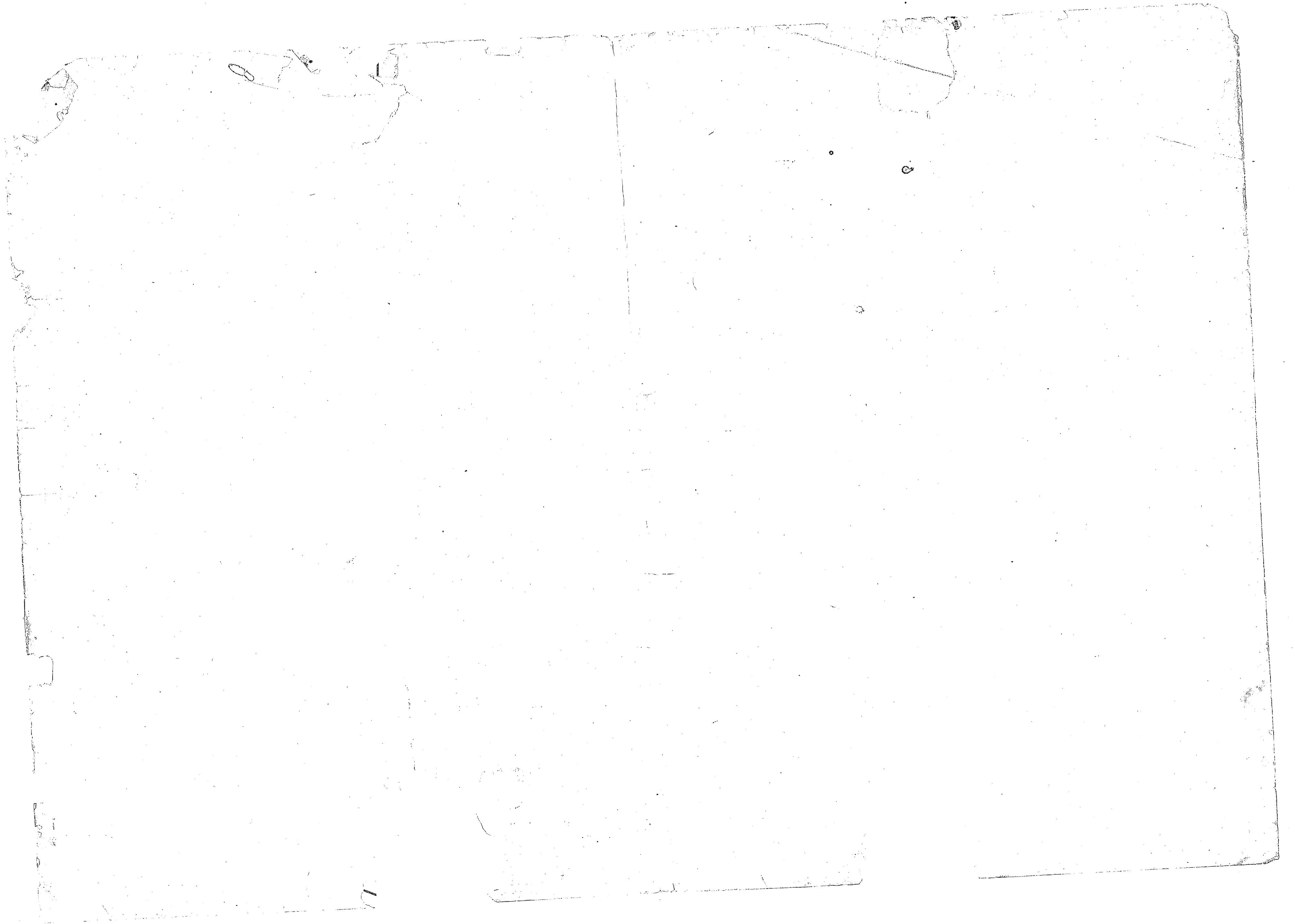
SYMBOL	DESCRIPTION	DATE	APPROVAL
REVISIONS			
DPWD DRAWING NO. 60123 DEPARTMENT OF THE NAVY BUREAU OF YARDS & DOCK DISTRICT PUBLIC WORKS OFFICE W.M. F. FREEMAN, INCORPORATED ENGINEERS & ARCHITECTS HIGH POINT, NORTH CAROLINA			
DES. R.M.B.F.A.	MARINE CORPS AIR FACILITY		
DRAWN A.A.	NEW RIVER, N.C.		
CHK. C.J.J.	EXPANSION OF UTILITIES		
PROJ. MGR. G.E.P.	WATER TREATMENT PLANT		
DATE 11/30/61	ELEVATIONS & DETAILS		
DR. MR. LUTHE	APPROVED	OFFICER IN CHARGE	DATE
	<i>Carl A. Ellis</i>		7 NOV 1961
	APPROVED FOR BUREAU OF YARDS & DOCK	SCALE AS NOTED	60123/61
	RE. 5700 FOR CHIEF OF BUREAU		
	DATE 11/30/61		

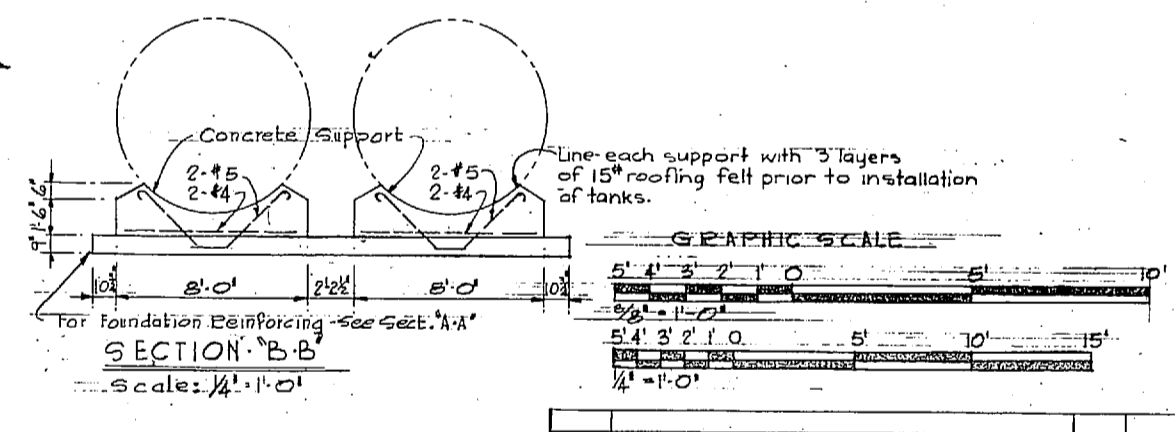
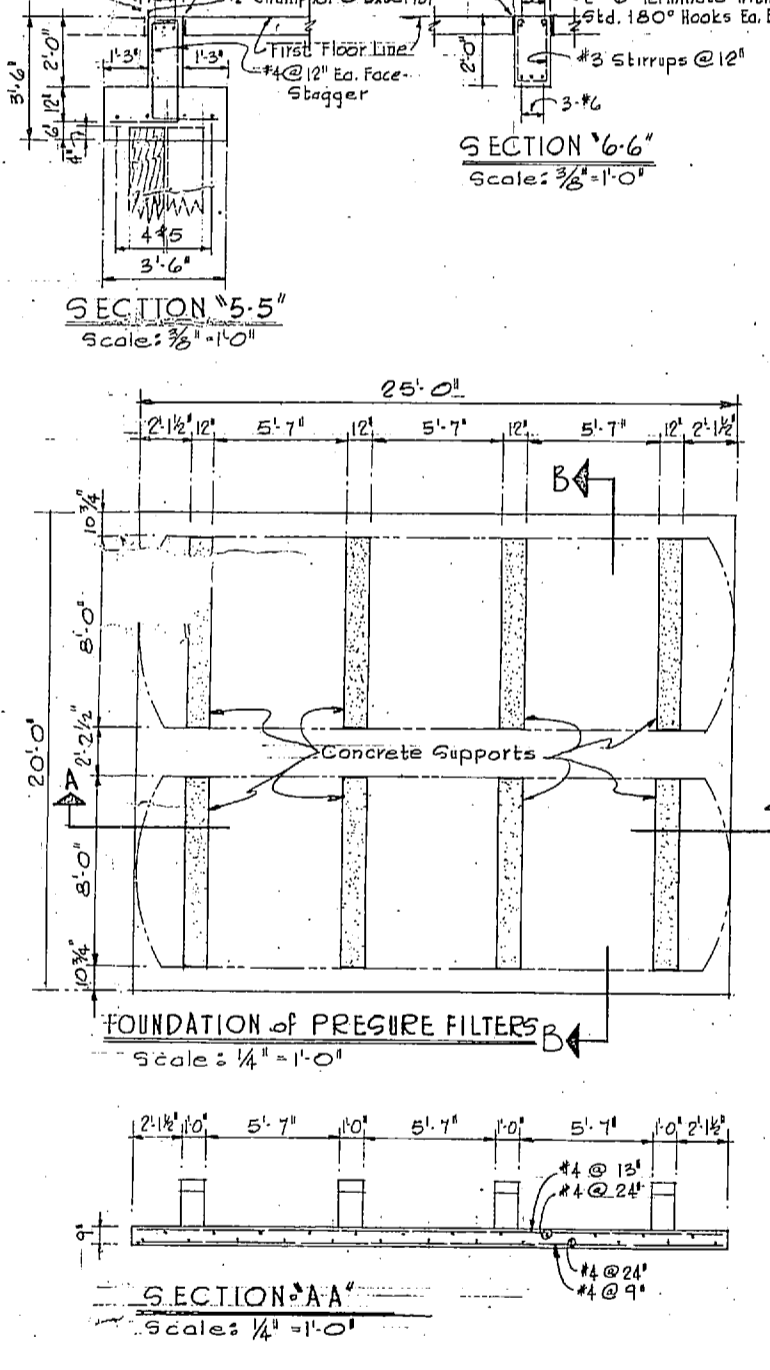
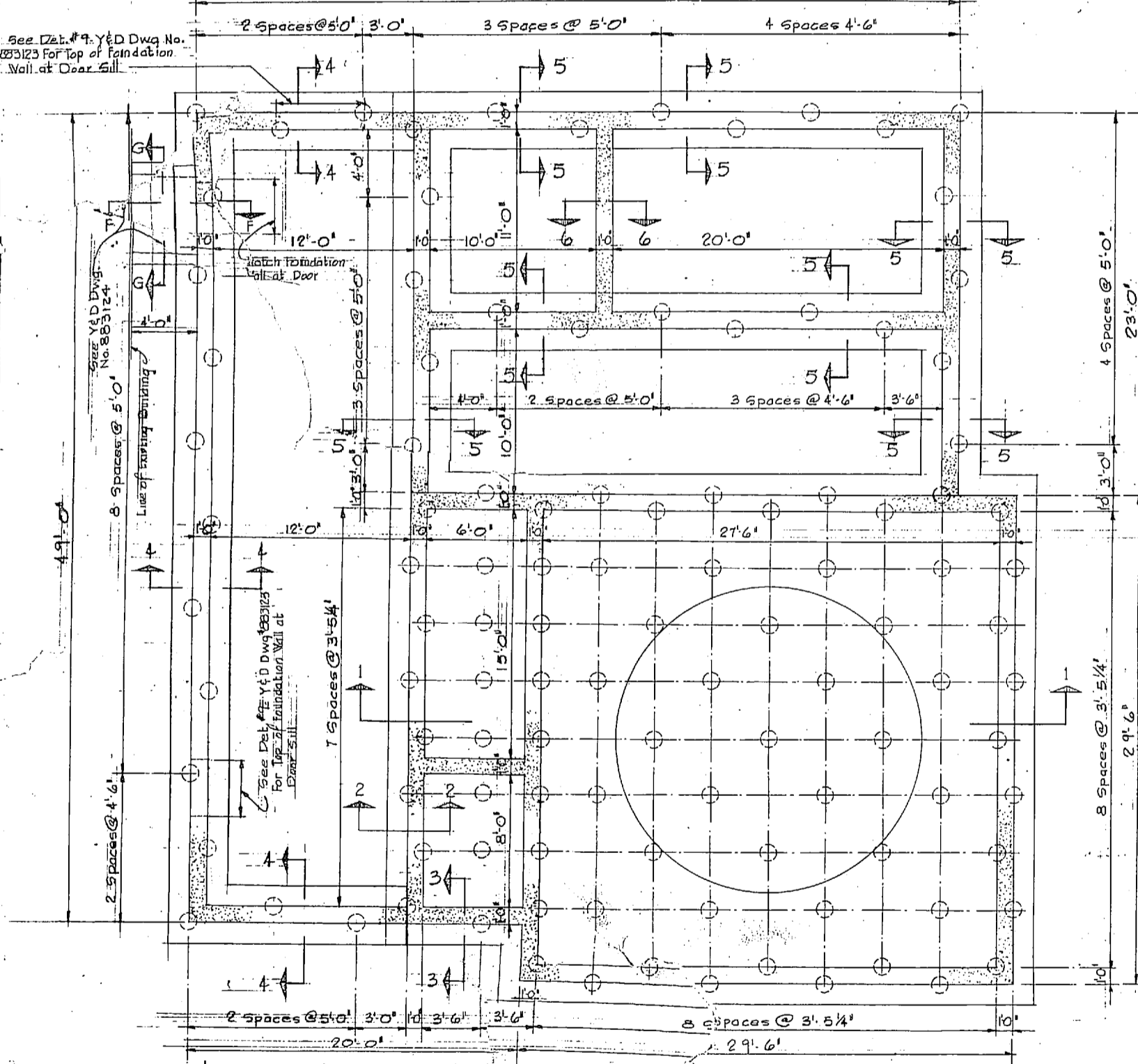
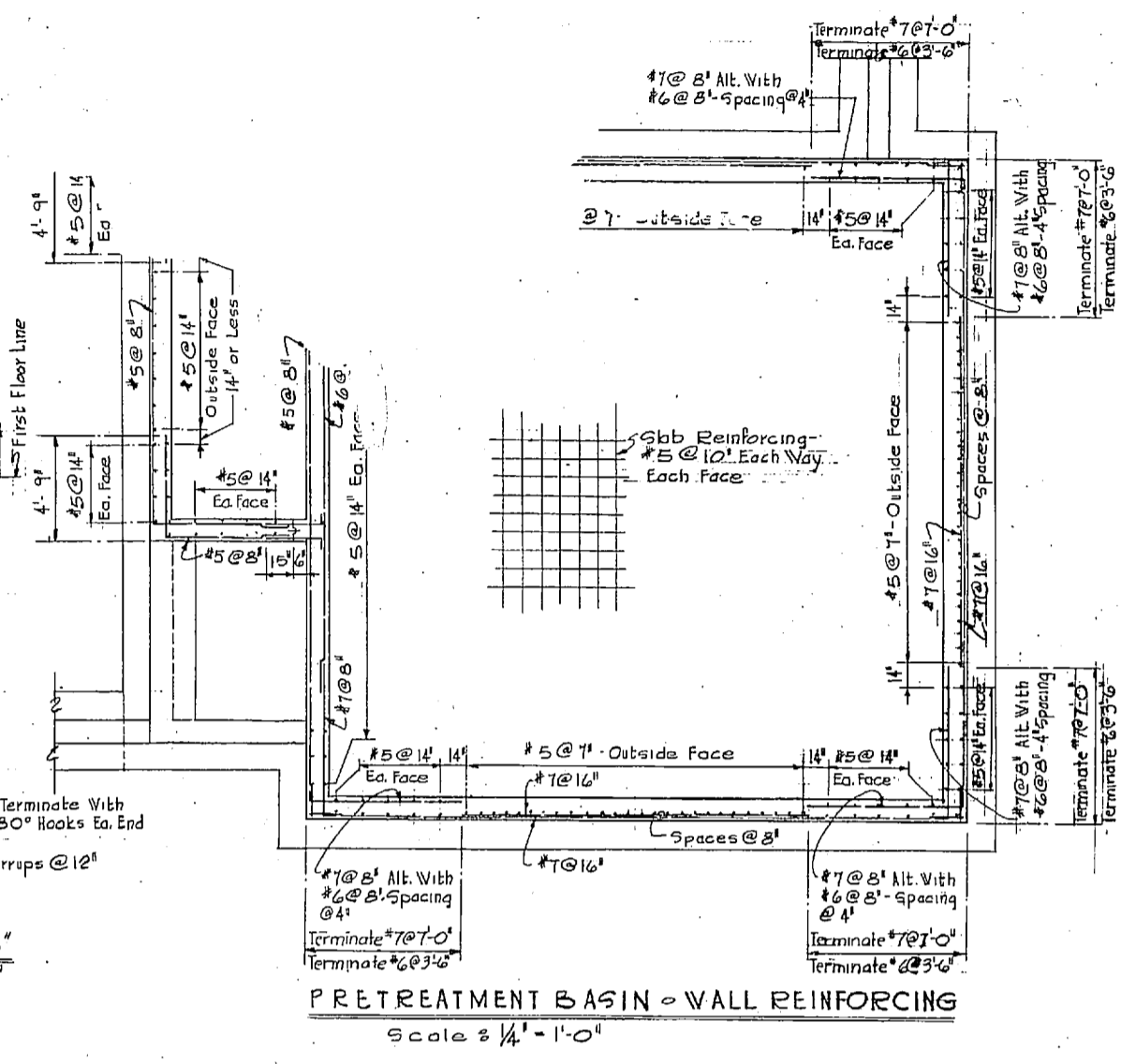
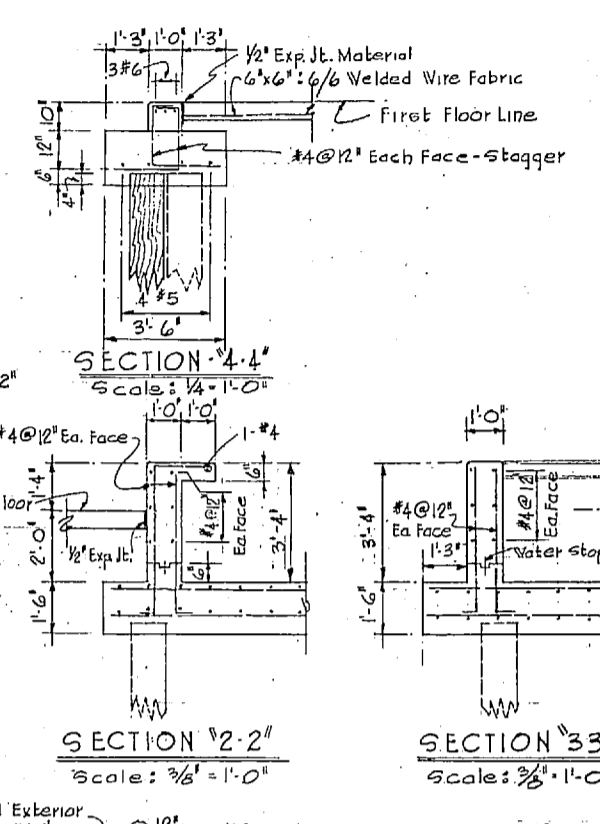
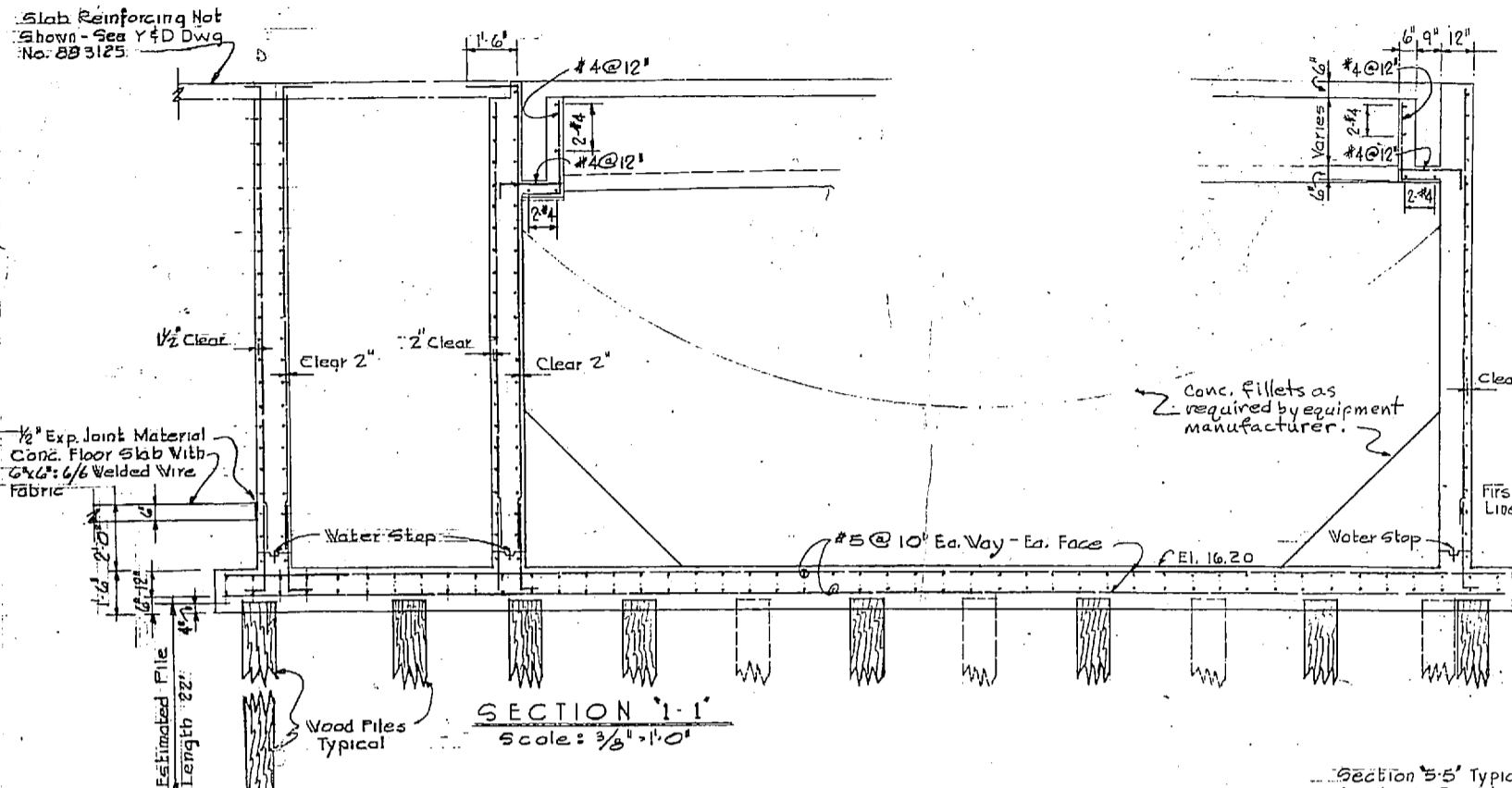
PROPERTY U.S. NAVY DPWD 510 TO BE RETURNED TO: 10021 DAVIS AVE. NEWPORT, VA. 23606





122
122





Pile Data:
 Bid length - 22 feet
 Minimum penetration 19 feet
 Bearing capacity 30,000lb. min.

NOTE: THIS IS A HALF-SIZE PRINT - USE GRAPHIC SCALE

SYMBOL	DESCRIPTION	DATE	APPROVAL
DPWO DRAWING NO. 80127	DEPARTMENT OF THE NAVY DIRECT PUBLIC WORKS OFFICE	BUREAU OF YARDS & DOCKS 800 RD. NORFOLK, VA.	
DES. D.K.L.	ENGINEERS & ARCHITECTS	WM. F. FREEMAN, INCORPORATED HIGH POINT, NORTH CAROLINA	
CHK. D.K.L./A.A.		MARINE CORPS AIR FACILITY NEW RIVER, N. C.	
PROJ. MGR. C.S.P.		EXPANSION OF UTILITIES WATER TREATMENT PLANT	
CHK. H.K.		REINFORCING DETAILS	
BY MR. [Signature]			

CATEGORY CODE NO. 841 10
 DATE 10-30-61
 SUBMITTED BY W.F. FREEMAN, INCORPORATED
 E. A. JERRY

APPROVED FOR BUREAU OF YARDS & DOCKS
 SCALE AS NOTED
 DATE -7 NOV 1961

PROPERTY U. S. NAVY DPWO SMD
 NAVAL BASE NO. 2025 VA. TO BE RETURNED NOT LATER THAN 21 DAYS AFTER BID OPENING

