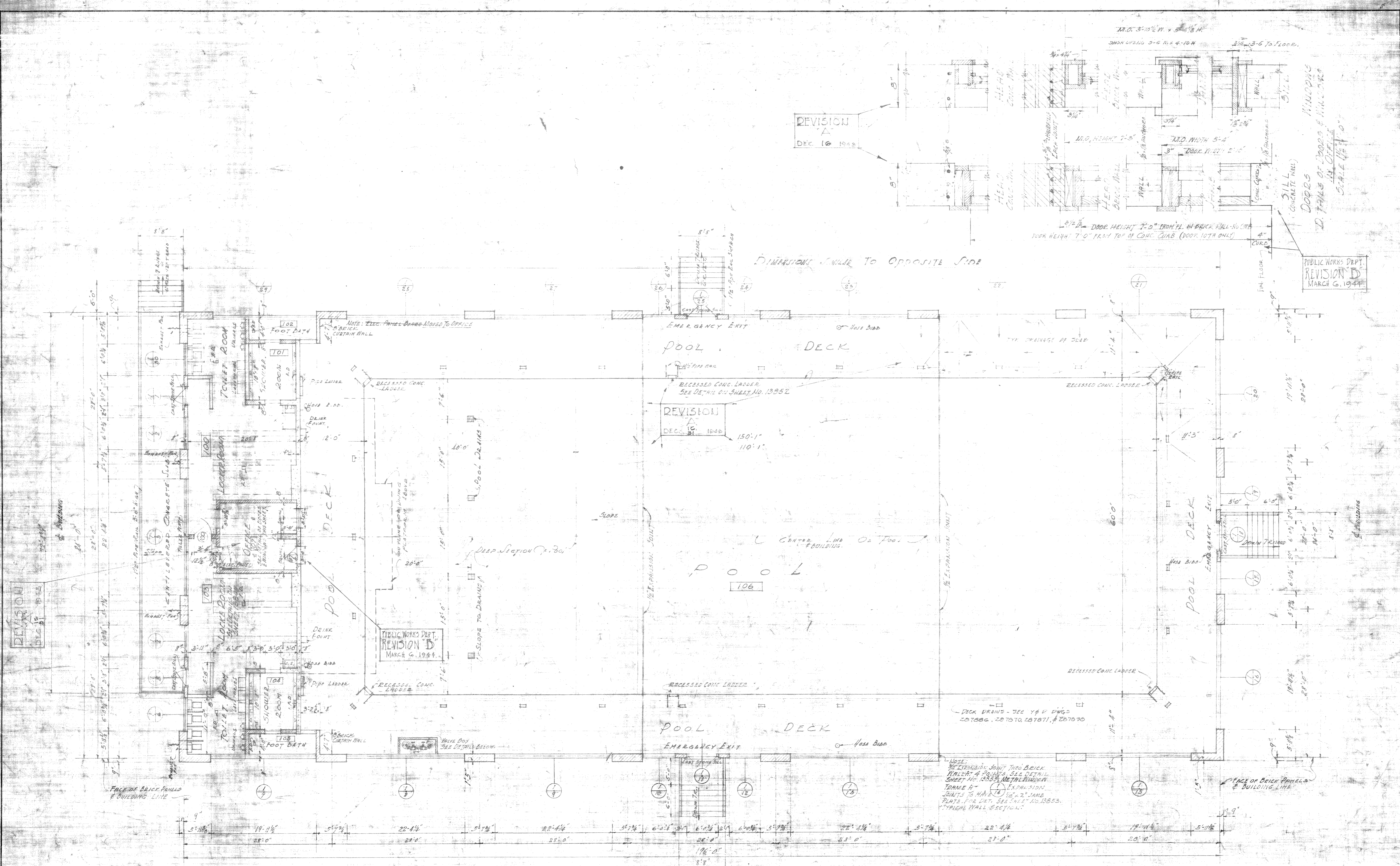


| | | | |
|---|--|-------------------|-----------------|
| REVISION D JAN. 31, 1944 | APPLY WINDOW, ROOF & SKILLED, CHANGED SCALE & DIMENSION | CUA | MINOR |
| REVISION C JAN. 15, 1944 | NOTED SPACING OF FOOTING REINFORCEMENT. CORRECTED DIM. OF PILASTER NEAR FILTER ROOMS | CUA | MINOR |
| Work this sheet in conjunction with M.O. DWG. 13376 | | | |
| CONTRACT No. 7030 | | | |
| DRAWN BY G. W. WILSON | CARR & J. E. GREINER CO., ARCHITECT-ENGINEERS BALTIMORE, MD. | | |
| CHECKED BY J. W. JENKINS | CAMP LEJEUNE - NEW RIVER, N. C. | | |
| GROUP OFFICER W. H. WOOD | BUREAU OF YARDS AND DOCKS - U. S. NAVY | | |
| DATE 9-17-43 | SWIMMING POOLS | | |
| SCALE As Shown | FIRST FLOOR PLAN | | |
| NO. 287890 | AND | | |
| | FOUNDATION PLAN | | |
| REVISION D JAN. 31, 44 | FOUNDATION DIMENSIONS CORRECTED | APPROVED 11-25 | SHEET 1 OF 2 |
| REVISION A DEC. 31, 43 | FOOTING REINFORCEMENT CORRECTED | APPROVED 11-25 | SHEET 1 OF 2 |
| REVISION B JAN. 15, 44 | FOOTING REINFORCEMENT CORRECTED | APPROVED 11-25 | SHEET 1 OF 2 |
| REVISION A DEC. 31, 41 | FOOTING REINFORCEMENT CORRECTED | APPROVED 11-25 | SHEET 1 OF 2 |

M-139

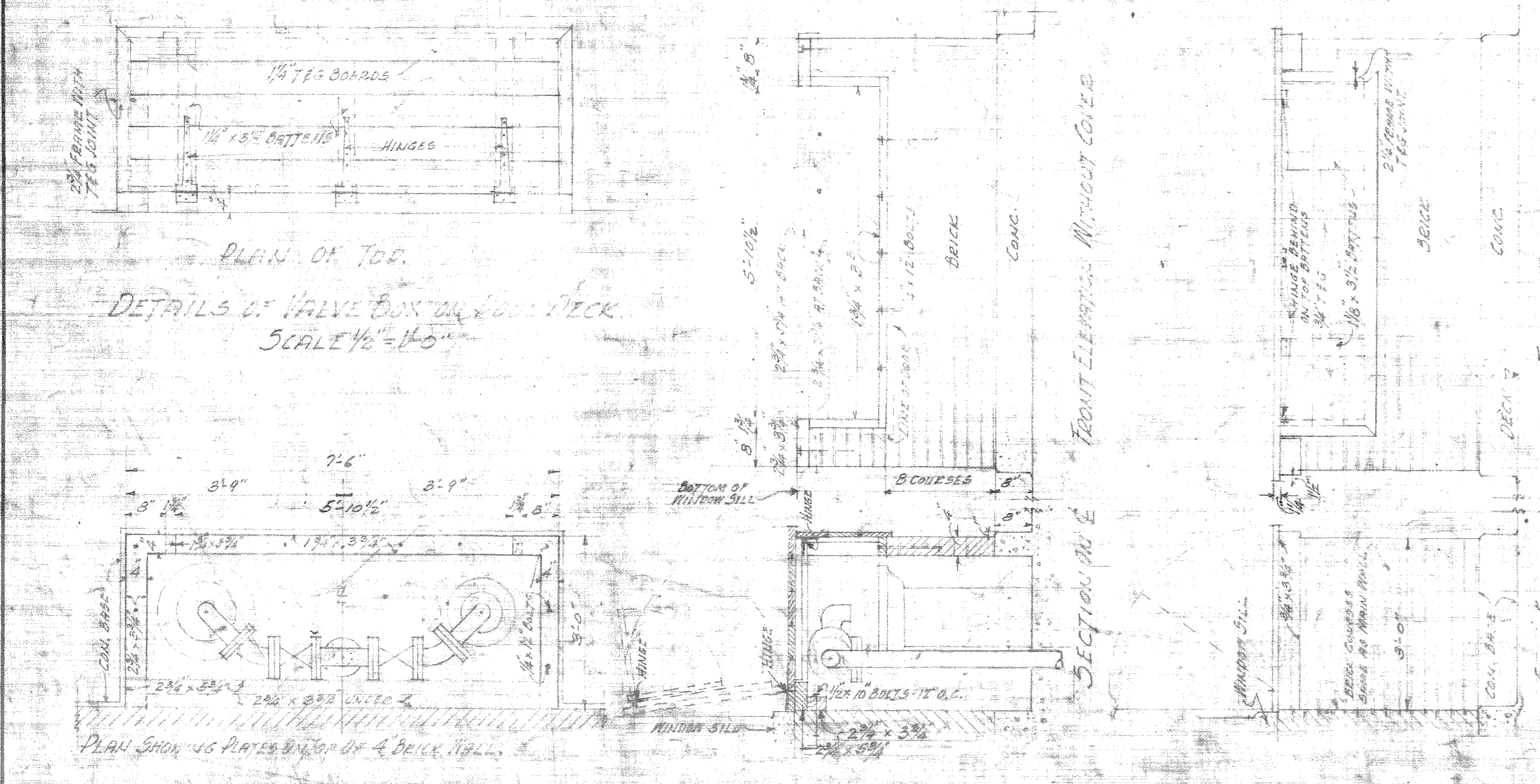
W-120



MAIN FLOOR PLAN
SCALE 1/8" = 1'-0"

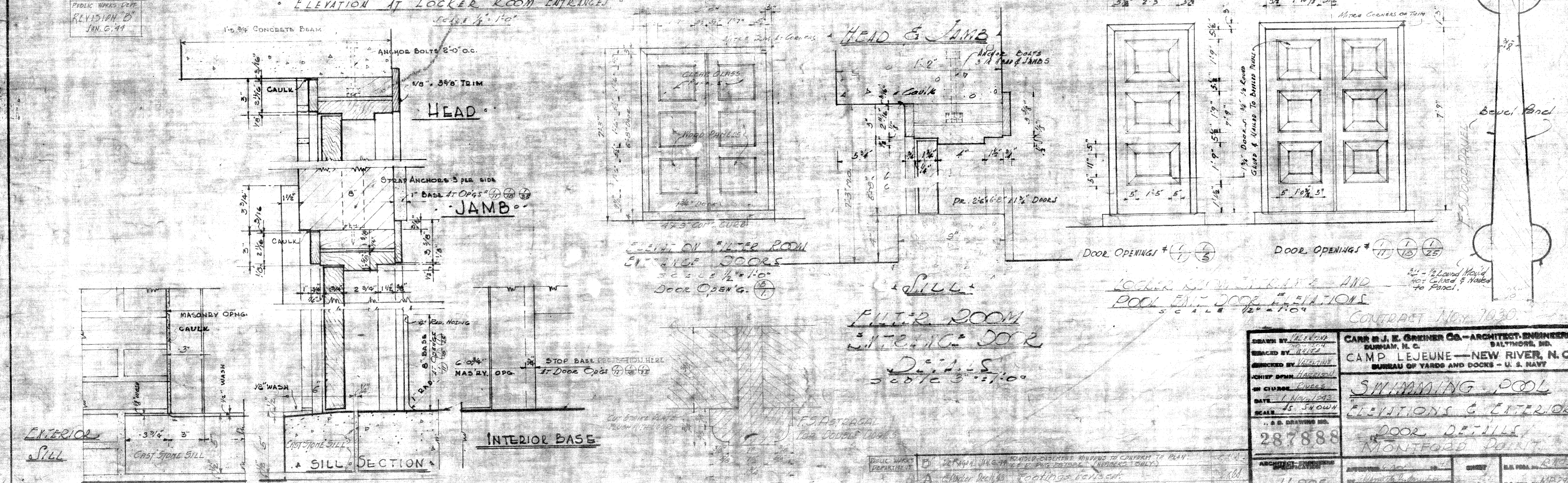
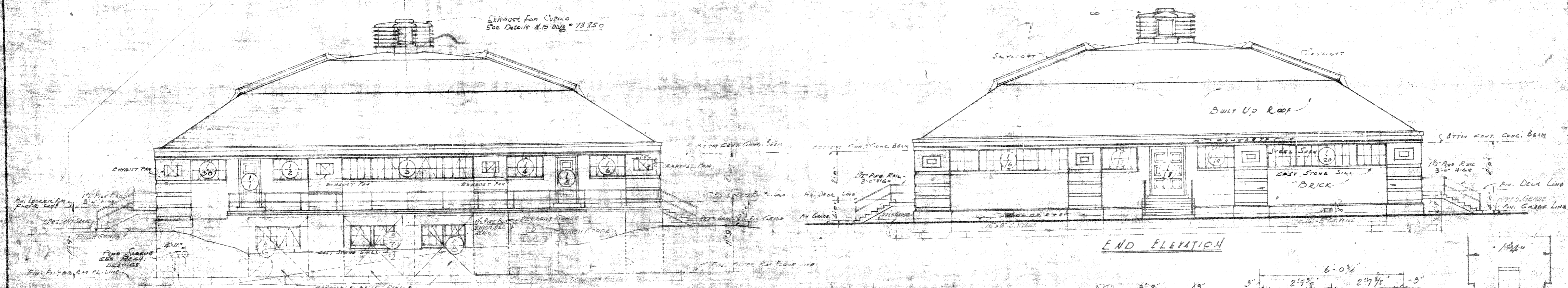
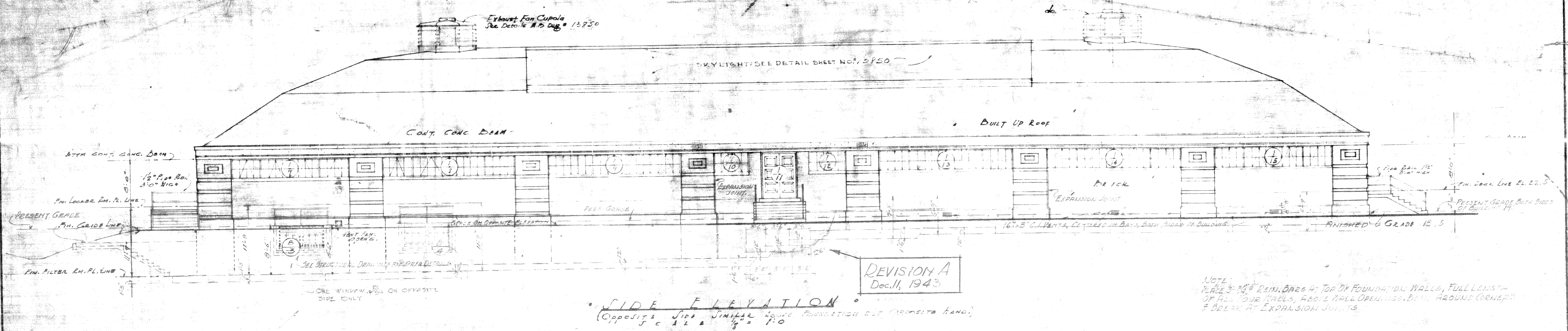
NOTE: THIS PLAN IS FOR AREA NO. 5
DIFFERENCES IN SITE GRADE REQUIRE MODIFICATION TO
CHANGELINE PLATFORM AND ADDITION OF BEELS
FOR OTHER SITES. THESE MODIFICATIONS ARE SHOWN ON
STRUCTURAL DRAWING NO. 13832 & ELEVATION SHEETS
TITLED "AREA NO. 5" & "NIGHTFORD POINT"

NOTE: FOR DETAILS OF ALL LADDERS & RAILINGS
SEE SHEET # 13832.



CONTRACT NO. 7030

| | | | |
|----------------------------------|----|--|-------|
| DRAWN BY: <i>W. J. Greiner</i> | | CARR & J. E. GREINER CO.—ARCHITECT-ENGINEERS DURHAM, N. C. BALTIMORE, MD. | |
| CHECKED BY: <i>W. J. Greiner</i> | | CAMP LEJEUNE — NEW RIVER, N. C. BUREAU OF YARDS AND DOCKS — U. S. NAVY | |
| CHIEF DEPT. <i>HARRISON</i> | | SWIMMING POOL | |
| IN CHARGE <i>Greiner</i> | | MAIN FLOOR PLAN | |
| DATE: <i>1.11.1943</i> | | V. & D. DRAWING NO. <i>287881</i> | |
| SCALE: <i>1/8" = 1'-0"</i> | | ARCHITECT-ENGINEER'S NO. <i>11905</i> | |
| APPROVED: <i>W. J. Greiner</i> | | BY: <i>W. J. Greiner</i> | |
| REV. | BY | DATE | BRIEF |



| | |
|------------------------------|---|
| DESIGNED BY W. J. LEJEUNE | CARR & J. E. GRINER CO.—ARCHITECT-ENGINEERS BALTIMORE, M. C. |
| DRAWN BY W. J. LEJEUNE | CAMP LEJEUNE—NEW RIVER, N. C. |
| CHECKED BY W. J. LEJEUNE | BUREAU OF YARDS AND DOCKS—U. S. NAVY |
| DATE 1/10/44 | SWIMMING POOL |
| SCALE 1/4" = 1'-0" | ELEVATIONS & INTERIOR |
| NO. 287888 | DOOR DETAILS |
| PROJECT NO. 11905 | MONTEFORD POINT |

LOCKER ROOM ENTRANCE & DOOR DETAIL

W-130