

5000
MAIN

Water Supply Branch
Division of Health Services
Post Office Box 2091
Raleigh, North Carolina 27602-2091

Dear Sir:

As requested, the attached forms concerning the operation of our water treatment facilities for the month of October 1987 are submitted.

If we can be of any further assistance, please contact us at your earliest convenience.

Sincerely,

M. G. LILLEY
Colonel, U. S. Marine Corps
Base Maintenance Officer
By direction of Commanding General

Encl:
(1) Plant Operations Forms

Writer: B. Frazelle, W/WW,X5988
Typist: S. Kolde, 4 Oct 87

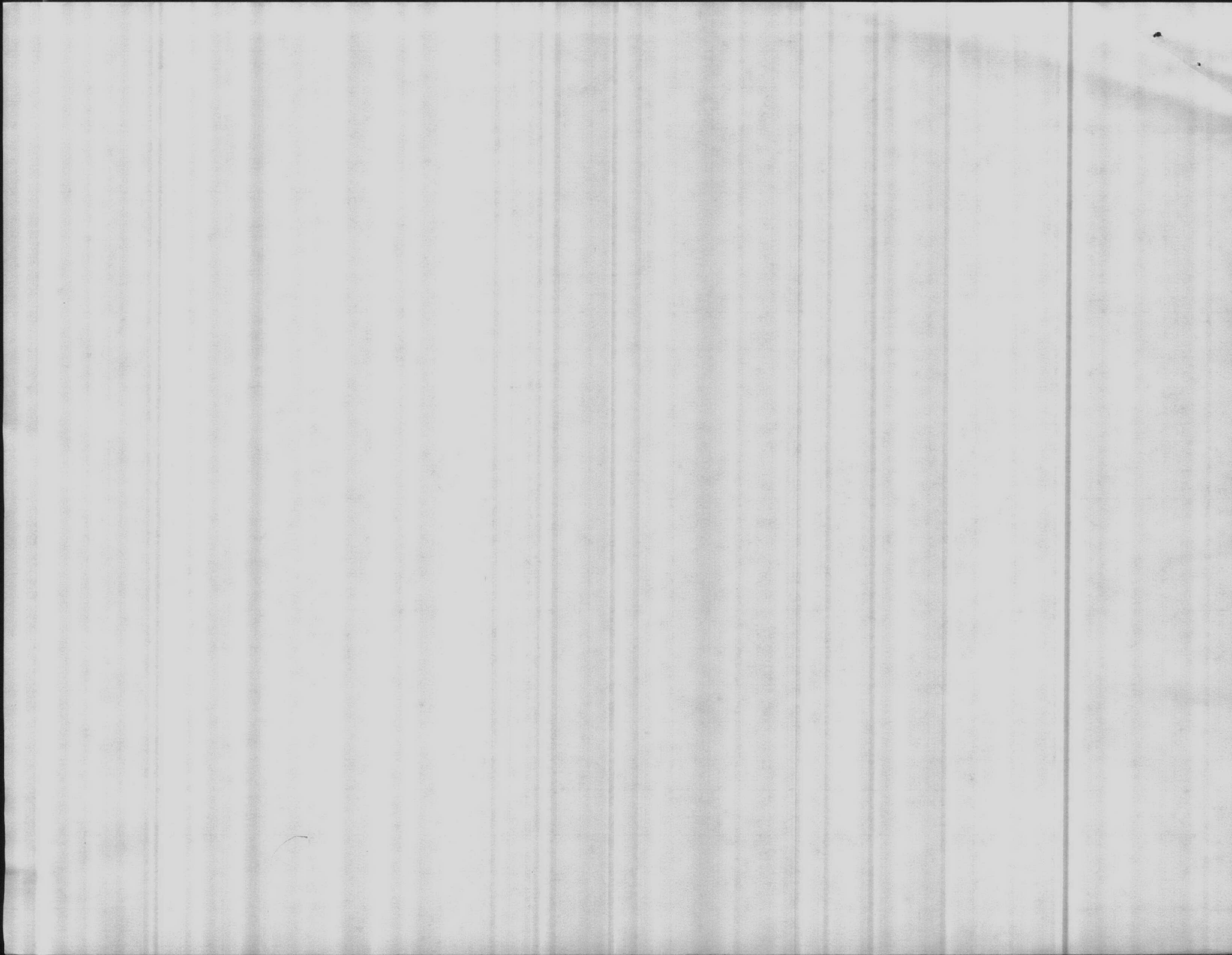
THE UNIVERSITY OF CHICAGO
DIVISION OF THE PHYSICAL SCIENCES
DEPARTMENT OF CHEMISTRY

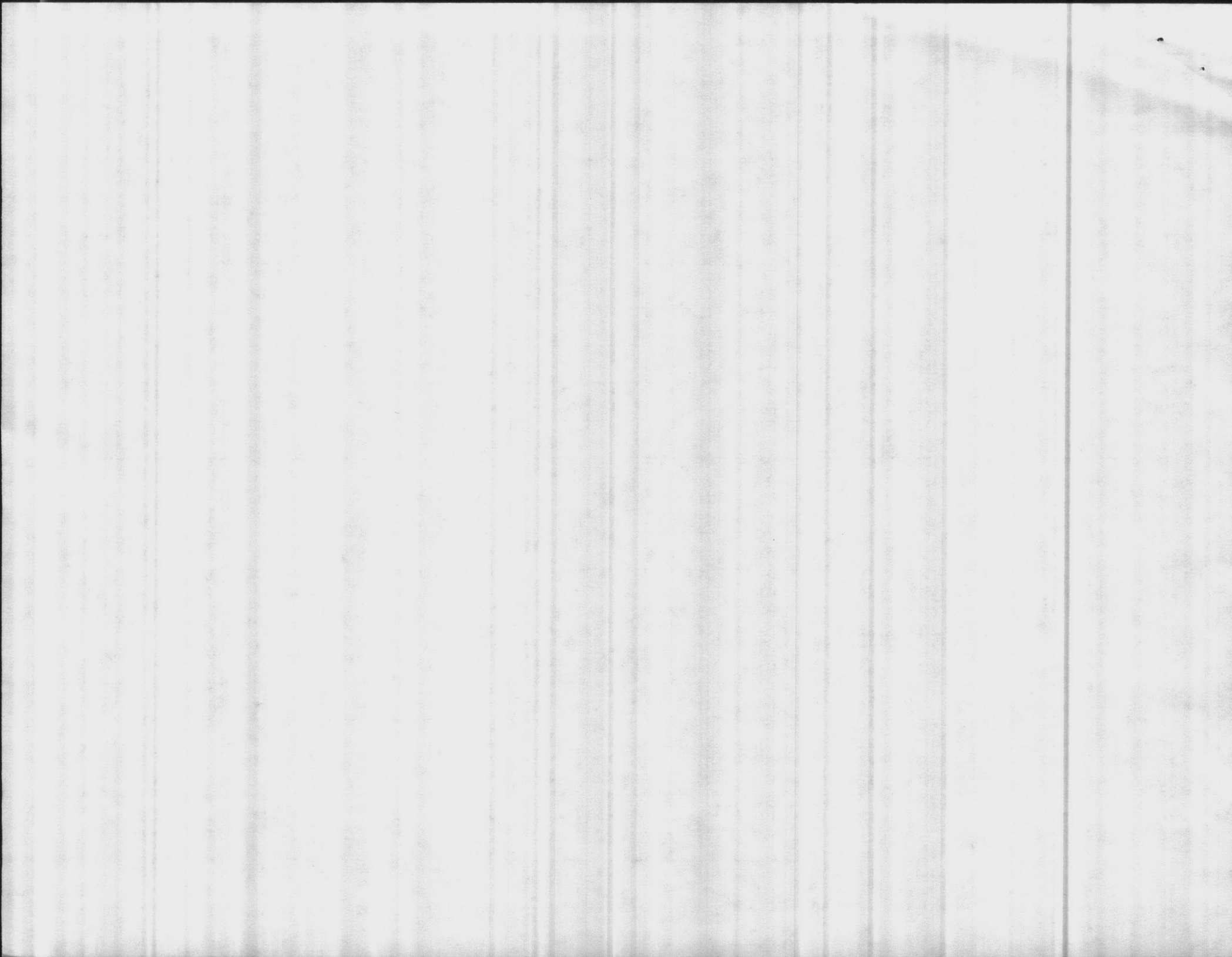
REPORT OF THE
COMMISSION ON THE ORGANIZATION
OF THE DEPARTMENT OF CHEMISTRY
FOR THE YEAR 1964-1965

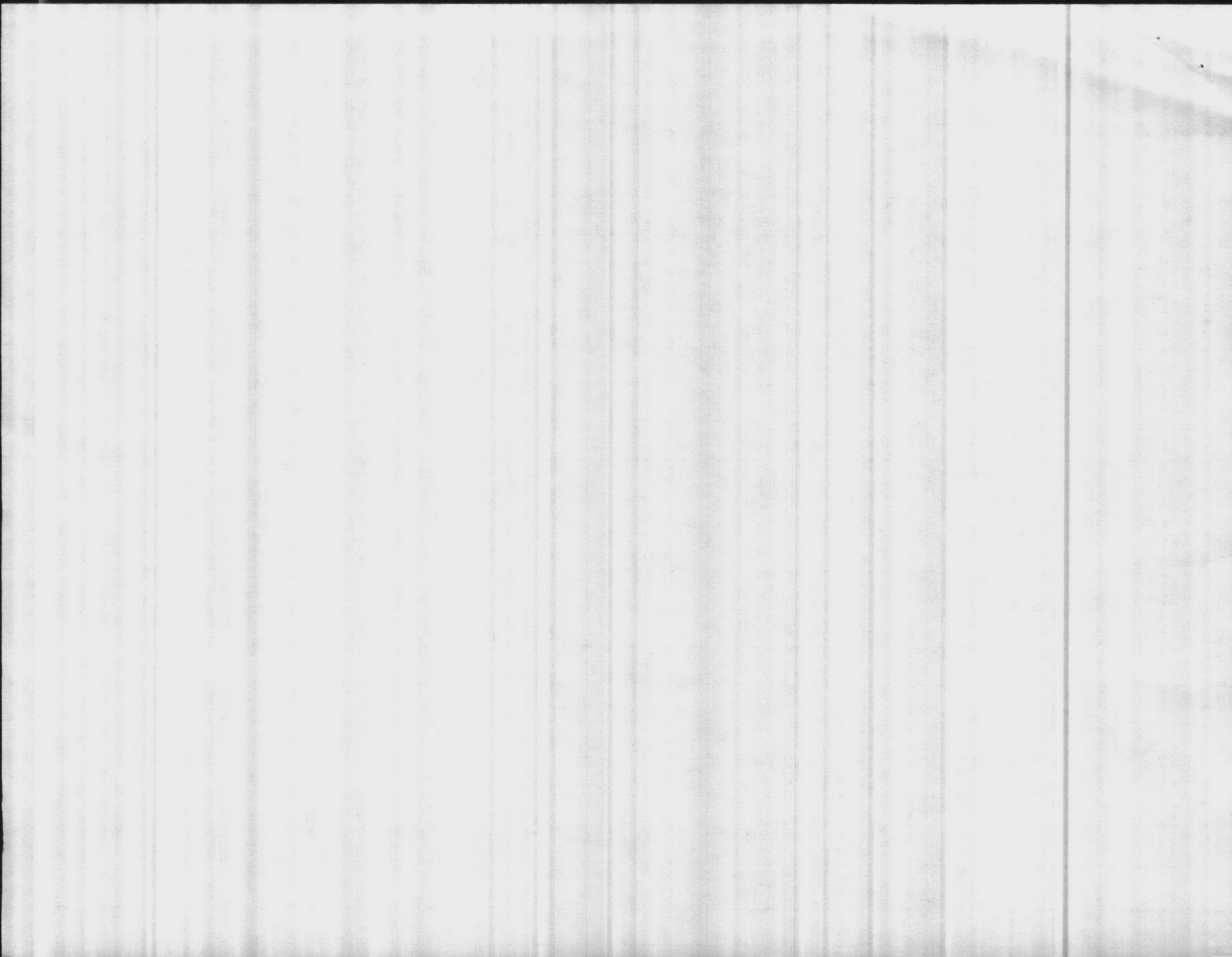
BY
THE COMMISSION ON THE ORGANIZATION
OF THE DEPARTMENT OF CHEMISTRY

CHICAGO, ILLINOIS, 1965

UNIVERSITY OF CHICAGO PRESS
54 EAST LAKE STREET
CHICAGO, ILLINOIS 60607

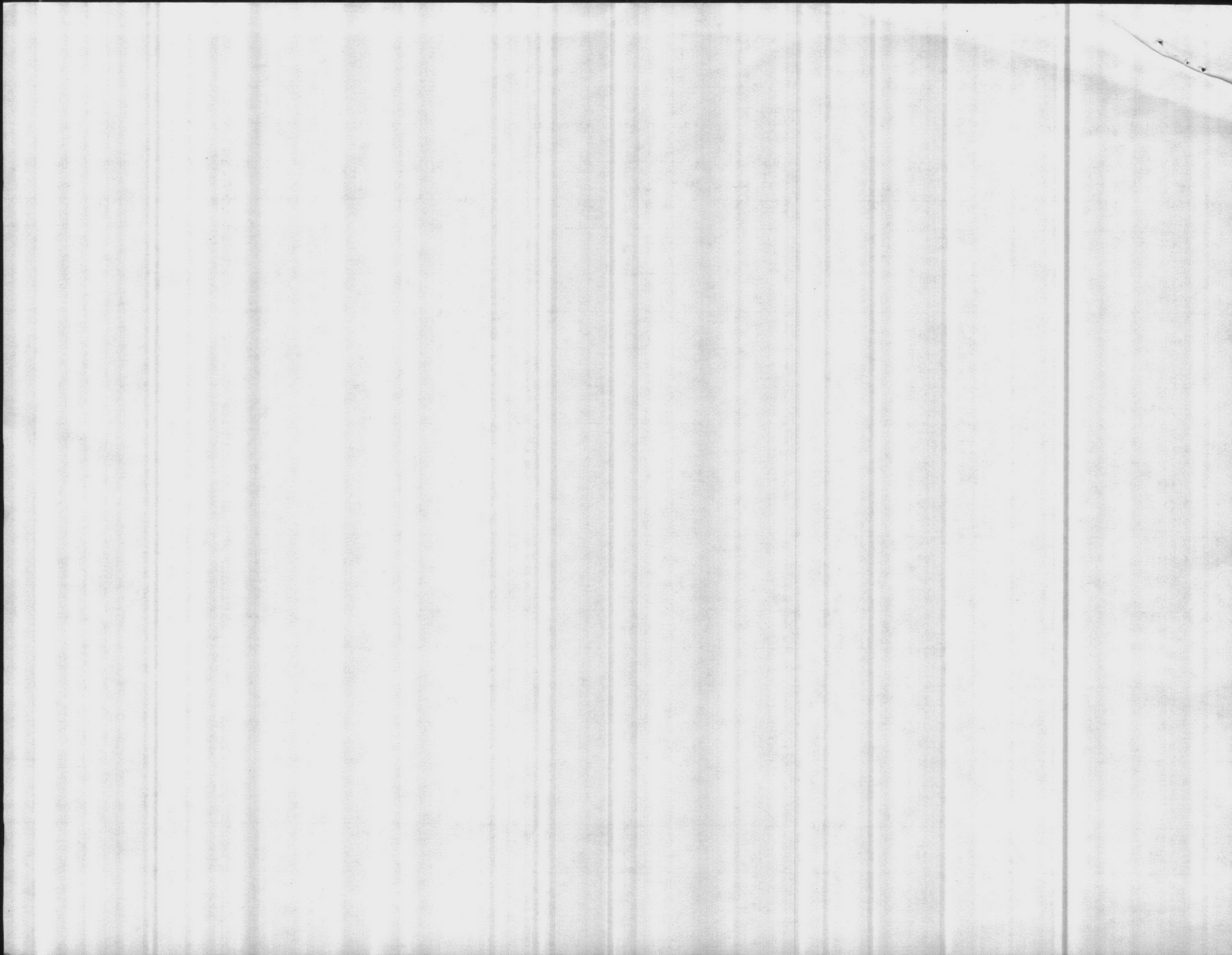












5000
MAIN

Water Supply Branch
Division of Health Services
Post Office Box 2091
Raleigh, North Carolina 27602-2091

Dear Sir:

As requested, the attached forms concerning the operation of our water treatment facilities for the month of November 1967 are submitted.

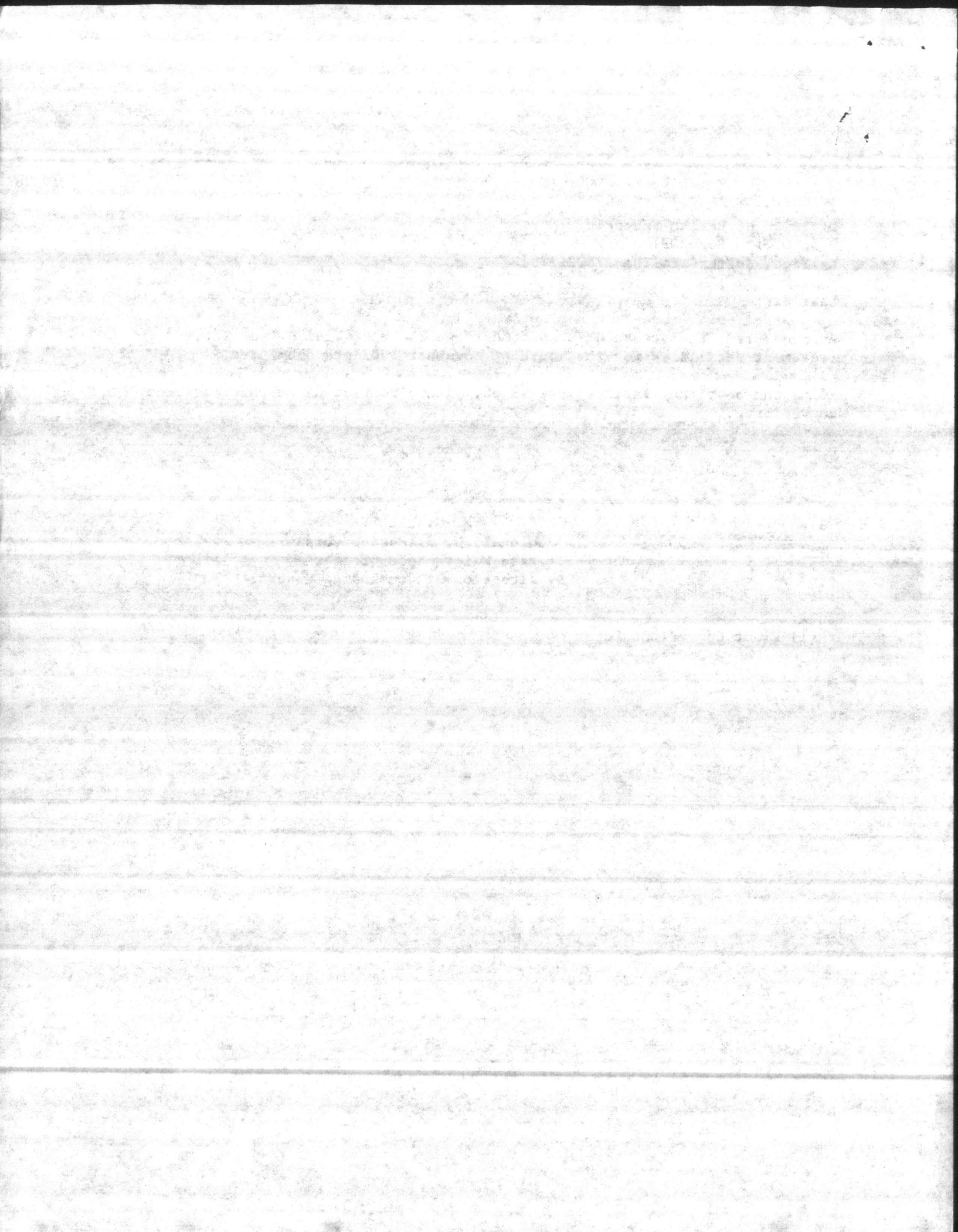
If we can be of any further assistance, please contact us at your earliest convenience.

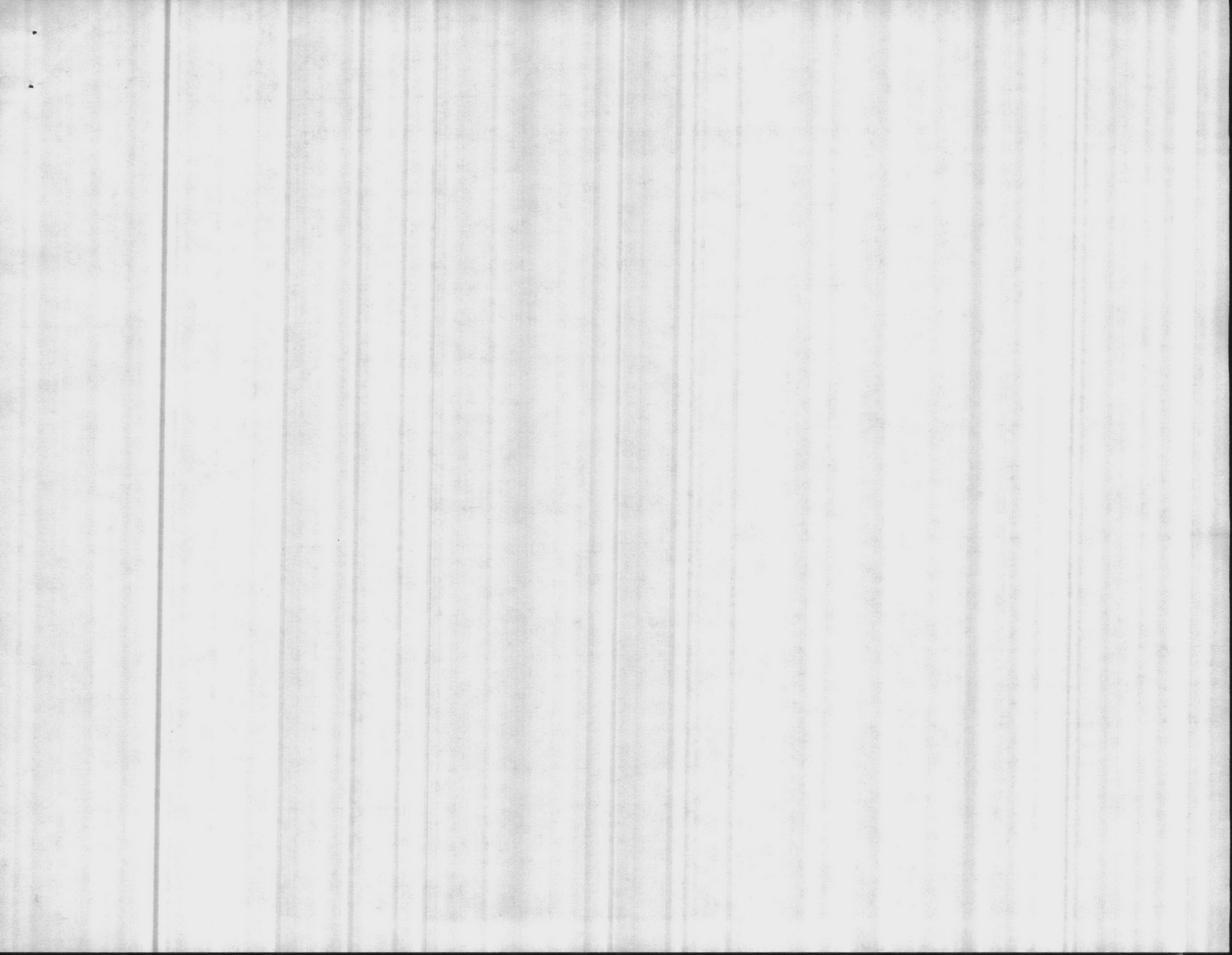
Sincerely,

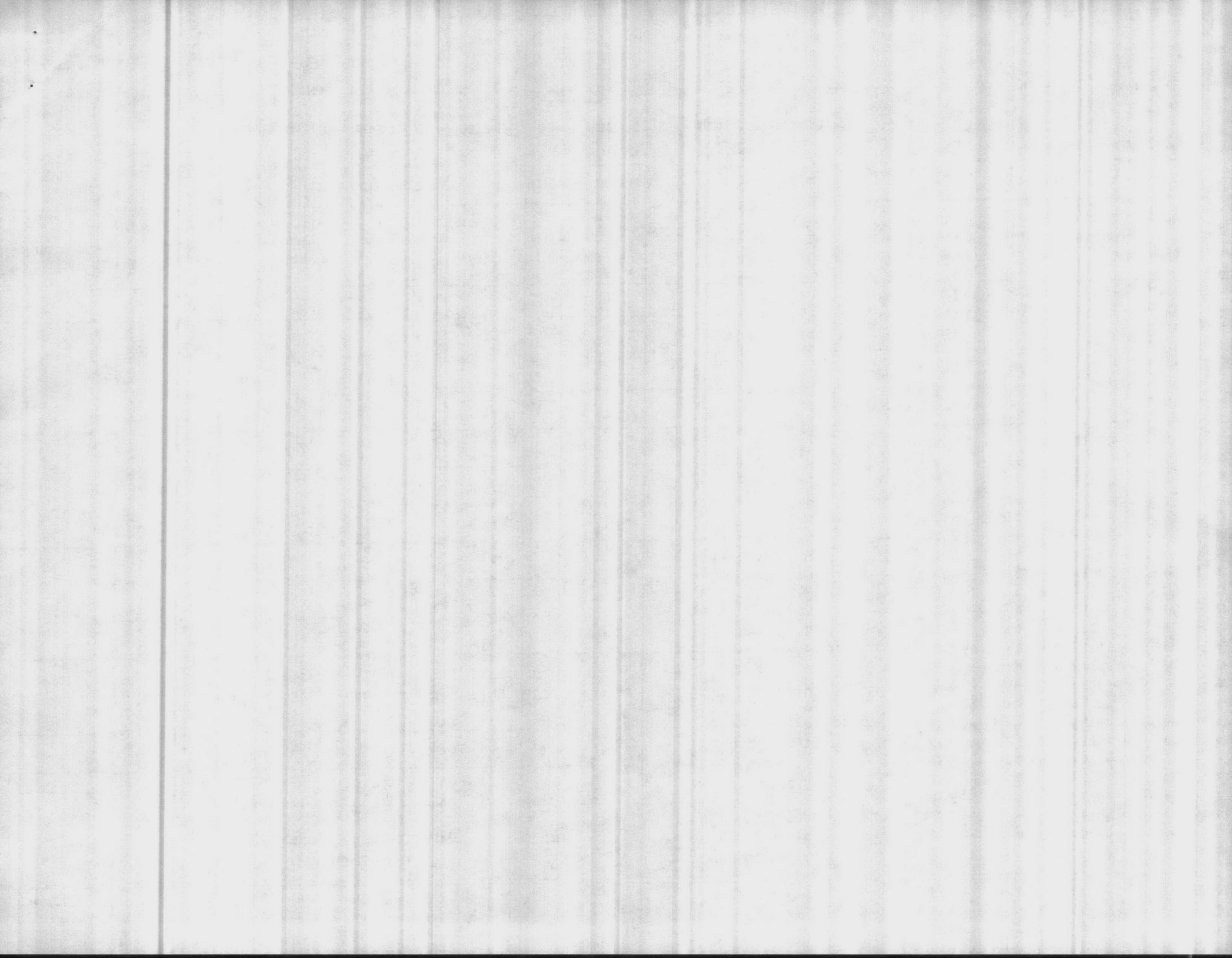
M. G. LILLEY
Colonel, U. S. Marine Corps
Base Maintenance Officer
By direction of Commanding General

Encl:

(1) Plant Operations Forms

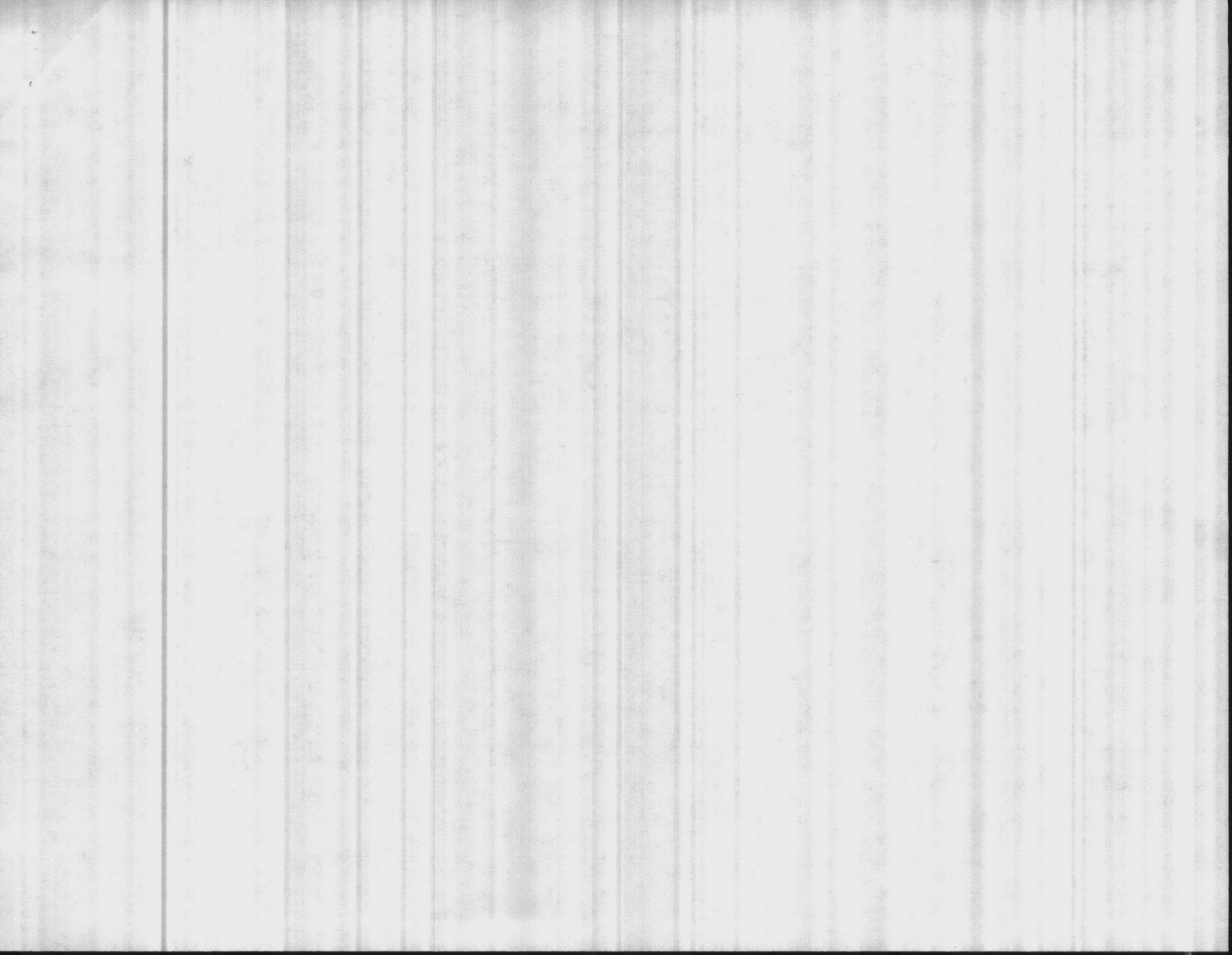


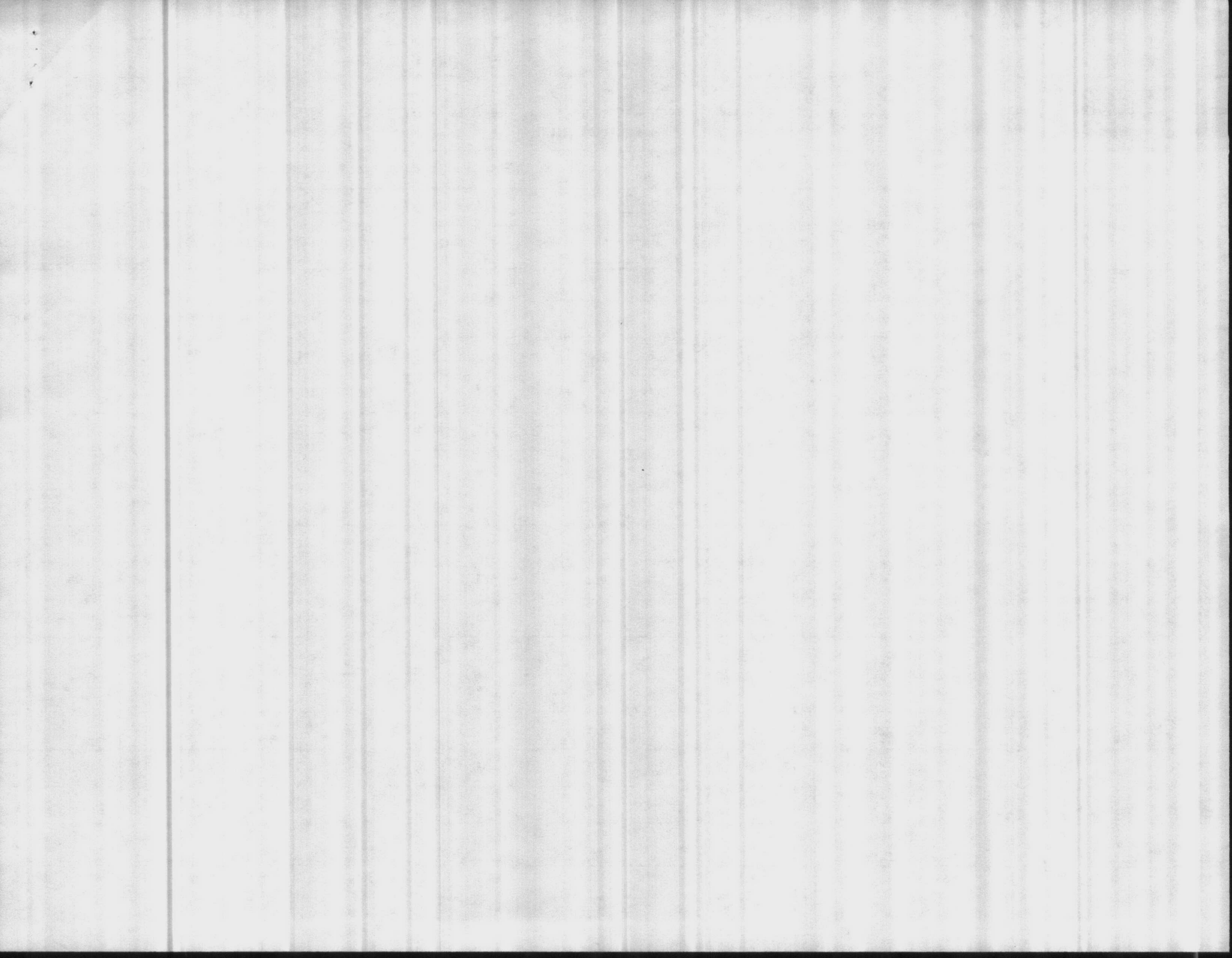












5000
MAIN

Water Supply Branch
Division of Health Services
Post Office Box 2091
Raleigh, North Carolina 27602-2091

Dear Sir:

As requested, the attached forms concerning the operation of our water treatment facilities for the month of December 1987 are submitted.

If we can be of any further assistance, please contact us at your earliest convenience.

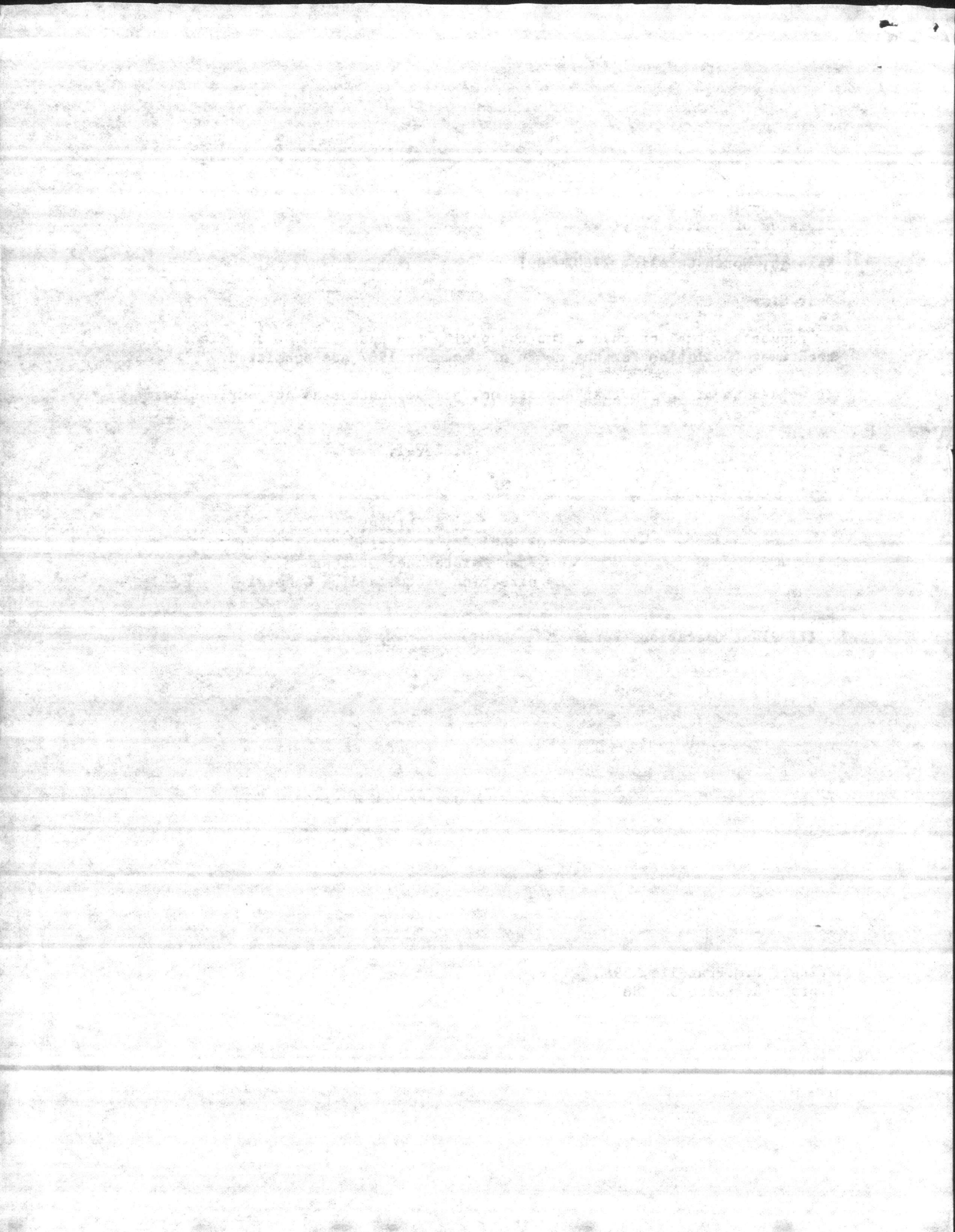
Sincerely,

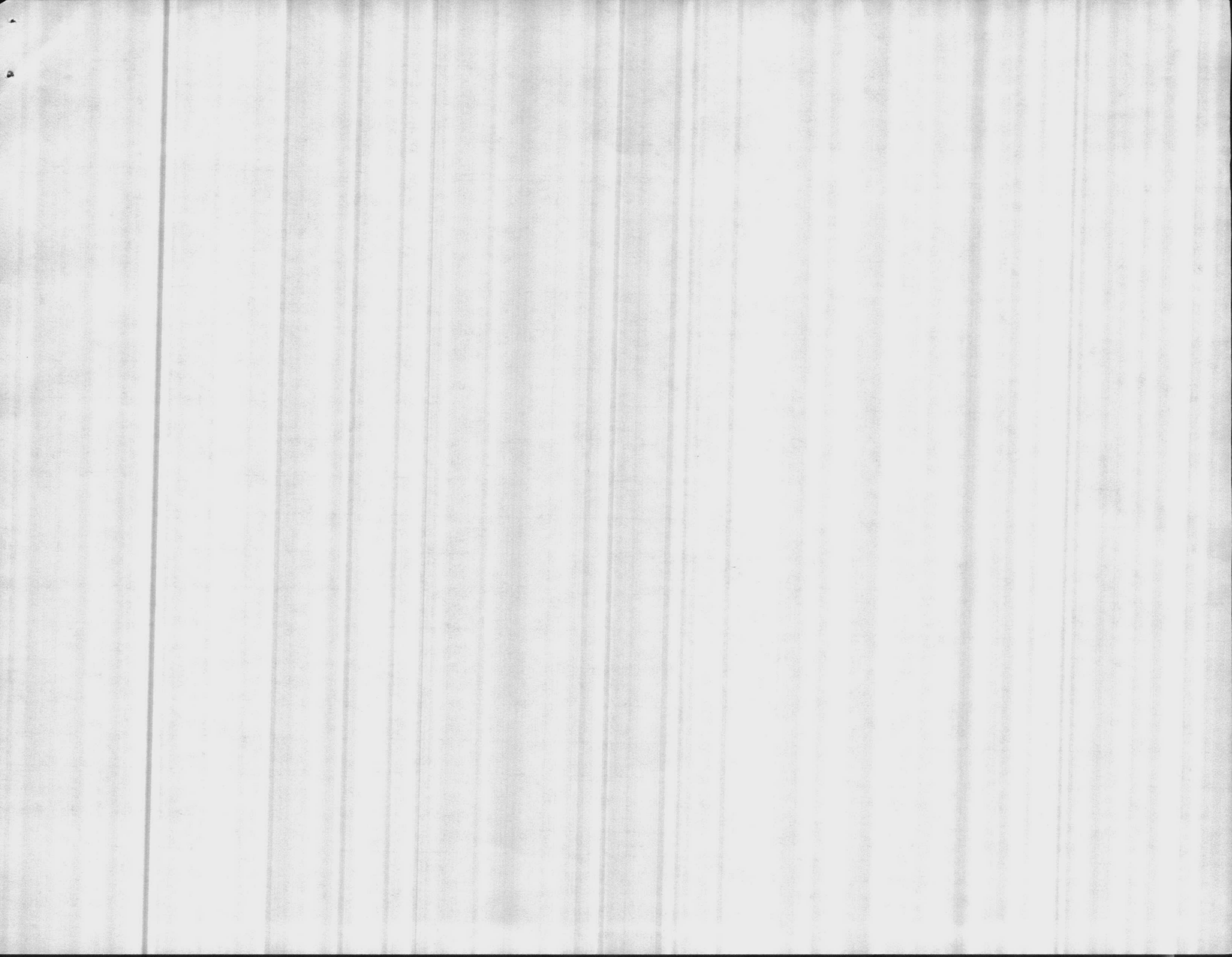
M. G. LILLEY
Colonel, U. S. Marine Corps
Base Maintenance Officer
By direction of Commanding General

Encl:

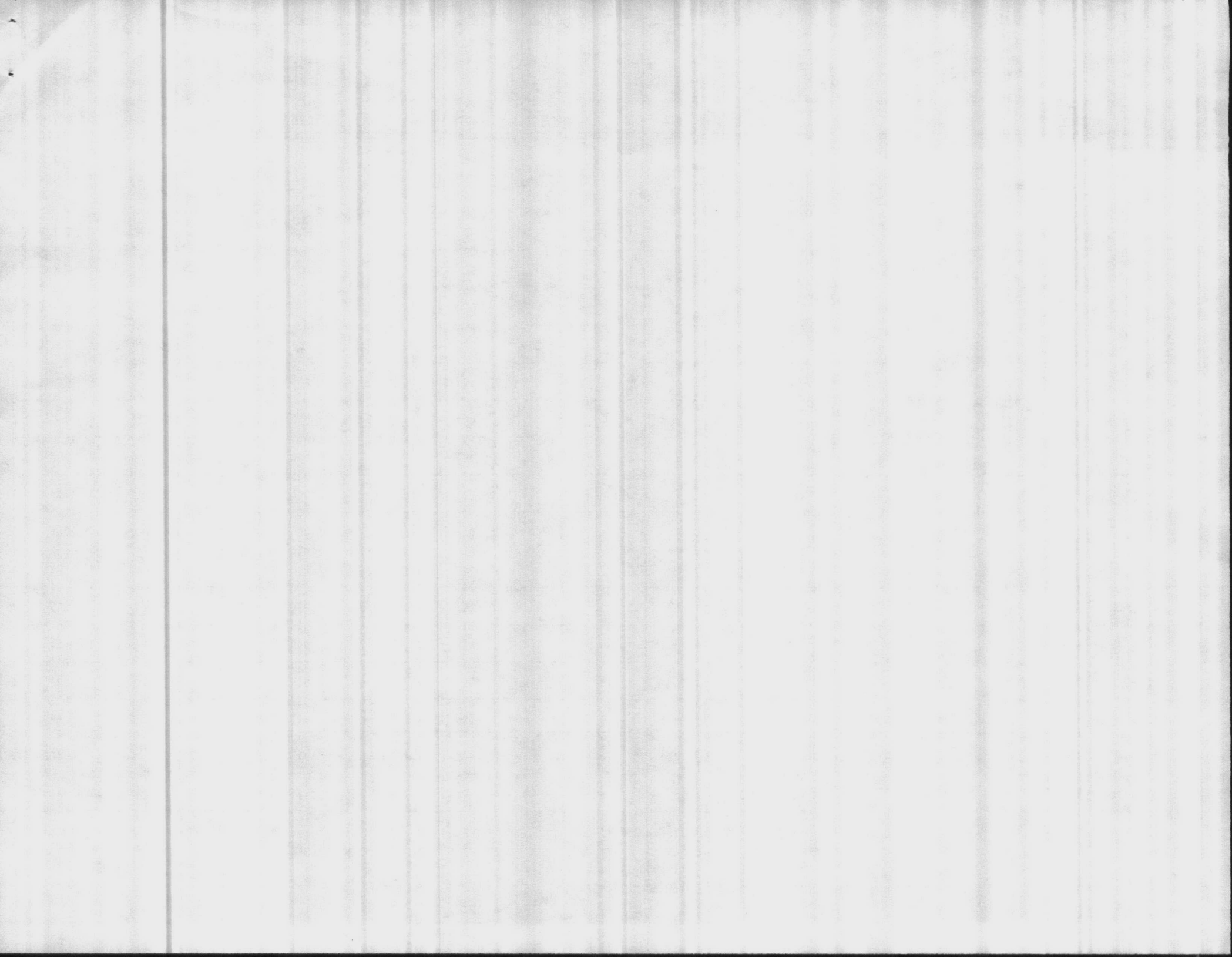
(1) Plant Operations Forms

Writer: B.M.Frazelle, X5988
Typist: S. Kolde 5Jan88









N.C. DEPARTMENT OF HUMAN RESOURCES -- DIVISION OF HEALTH SERVICES -- ENVIRONMENTAL HEALTH SERVICE

Report of Operation

Month: DECEMBER

Year: 1987

Total Number of Wells in System:

2

PUBLIC WATER SYSTEM FOR: Onslow Beach Water Plant

PSID: 04-67-048

Well No	Total Water Pumped		Hours Plant Oper	Bkwh Water Used (Gals)	Turbidity (NTU)	Chlorine Used (lbs)	Lime Used (lbs)	Flouride Used (lbs)	pH			Hardness (mg/l)			Alkalinity (mg/l)			Free Chlorine Resid (mg/l)	Fluoride (mg/l)	
	Raw (MGD)	Delivered (MGD)							Raw	Finish	Deliver	Raw	Softener	Deliver	Raw	Filter	Deliver			Plant
1	0.132	0.141	8.0	7,000		2						168	50	54				1.7	0.9	
2	0.160	0.139	11.0	7,000		4						170	54	54				1.3	0.8	
3	0.112	0.132	8.0	14,000		2						168	56	55				1.4	0.8	
4	0.123	0.190	9.0	7,000		3						170	52	54				1.3	1.1	
5	0.143	0.145	8.0	7,000		2						168	50	50				1.0	1.0	
6	0.195	0.144	12.0	14,000		6						168	50	52				1.1	0.7	
7	0.112	0.156	7.0	5,000		4						170	48	49				1.8	1.5	
8	0.134	0.122	10.0	7,000		4						168	72	60				1.3	1.0	
9	0.101	0.141	7.0	7,000		2						168	48	56				1.8	1.2	
10	0.157	0.151	12.0	7,000		4						168	48	54				1.7	1.2	
11	0.089	0.119	6.0	14,000		2						170	48	54				1.7	1.2	
12	0.120	0.140	9.0	9,000		2						170	52	56				1.8	1.2	
13	0.139	0.143	8.0	9,000		4						168	46	50				1.6	1.2	
14	0.143	0.132	10.0	9,000		4						170	44	51				2.0	1.2	
15	0.148	0.142	9.0	5,000		4						170	56	54				1.6	1.3	
16	0.105	0.136	7.5	9,000		4						168	80	76				1.2	1.2	
17	0.145	0.137	9.5	5,000		4						164	76	54				1.7	1.2	
18	0.124	0.142	7.5	4,000		3						166	72	68				1.6	1.2	
19	0.116	0.128	7.5	7,000		2						162	51	60				1.5	1.2	
20	0.126	0.132	8.5	6,000		2						164	52	56				1.5	1.2	
21	0.118	0.139	8.0	9,000		3						166	56	56				1.6	1.3	
22	0.116	0.134	9.0	7,000		1						164	48	52				1.8	1.4	
23	0.134	0.135	11.0	7,000		2						164	50	52				1.8	1.3	
24	0.088	0.132	7.0	5,000		3						170	48	50				1.6	1.2	
25	0.111	0.156	7.0	4,000		3						170	46	49				1.7	1.2	
26	0.130	0.110	9.0	7,000		2						168	44	47				1.5	1.2	
27	0.083	0.134	6.0	9,000		2						168	63	48				1.7	1.2	
28	0.127	0.136	8.0	14,000		3						170	65	52				1.3	1.7	
29	0.135	0.142	9.0	7,000		3						175	41	50				1.7	1.3	
30	0.128	0.140	8.0	7,000		2						170	46	50				1.6	1.2	
31	0.172	0.147	9.0	12,000		5						170	50	50				1.6	1.2	
Total	3.966	4.317	265.5	247,000	0.00	93	0	0	0.0	0.0	0.0	5213	1668	1673	0	0	0	48.5	36.5	0.00
Avg	0.128	0.139	8.6	7,968	0.00	3	0	0	0.0	0.0	0.0	168	54	54	0	0	0	1.6	1.2	0.00
Max	0.195	0.190	12.0	14,000	0.00															
Min	0.083	0.110	6.0	4,000	0.00															

4317 4213

