

11330.1 CATHODIC PROTECTION

OPEN

CLOSED

TEMP. SECNAVINST 5212.5B, Part II  
Chap. 11, par. 11300(2) 2 years ✓

M.C. Stationary	-	1	<del>copy</del> (to Norfolk)
white manifold	-	1	(copy to OPNBR)
yellow ladder	-	1	(reading file - circle MAIN in red)
pink manifold	-	2	(Col's <sup>no encl</sup> secty + Ruth's copy)
green manifold	-	1	(Command Read File)
green manifold	-	1	(Sally's copy)

11330  
MAIN

From: Commanding General, Marine Corps Base, Camp Lejeune, North  
Carolina 28542-5001  
To: Commander, Atlantic Division, Naval Facilities Engineering  
Command, Norfolk, Virginia 23511 (Attn: Karl D. Liebrich,  
Code 10284)

Subj: CATHODIC PROTECTION

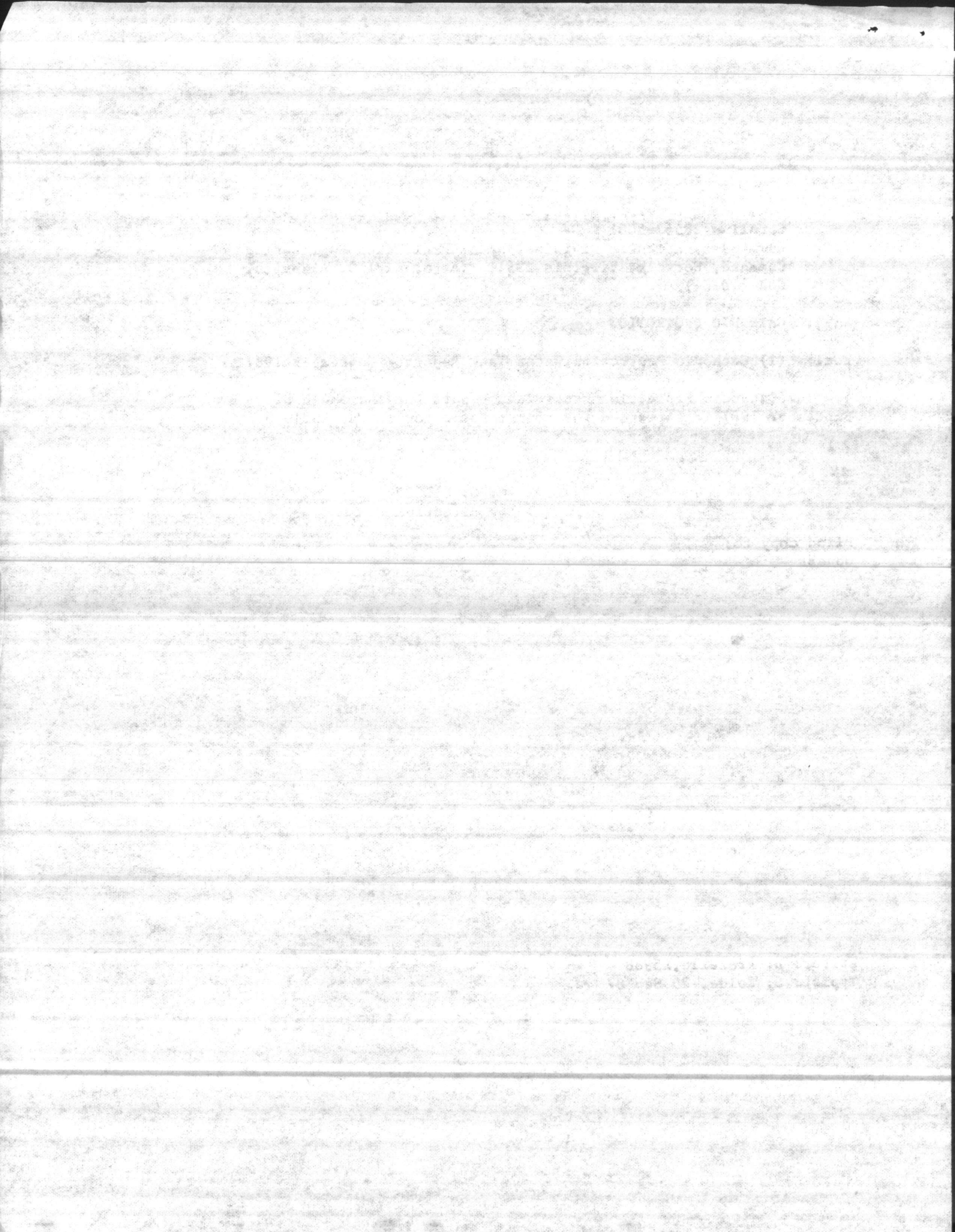
Encl: (1) Cathodic Protection Water Tank Report - September 1987

1. The Cathodic Protection Water Tank Report for the month of  
September 1987 is forwarded for your information in the enclosure.

M. G. LILLEY  
By direction

Blind copy to:  
OpnsEr

Writer: B. Frazelle, X5988  
Typist: S. Kolde, 29 Sep 87



# CATHODIC PROTECTION RECTIFIER RECORD

22 AUG 1985

ACTIVITY Marine Corps Base, Camp Lejeune, North Carolina  
 Marine Corps Air Station, New River, North Carolina

*Sept 1987*

RECTIFIER	TAP SETTING		AC INPUT		FIRST DC OUTPUT		SECOND DC OUTPUT		THIRD DC OUTPUT		REMARKS
	COURSE	FINE	VOLTS	AMPS	VOLTS	AMPS	VOLTS	AMPS	VOLTS	AMPS	
<i>BM</i> S-830	A	3	220	6.0	4	0.7	4	0.2			
STT-40	A	3	115	5.2	2	0.5	2	0.1			
STC-1070	A	2	115	24	2	0.3	2	0.1			
STC-606	A	3	115	7.2	2	0.5	2	0.1			
SBB-25	A	1	110	10.0	4.5V	1.3	4.5	0.3			
SRR-44	A	3	115	11.3	3.5V	0.6	3.5	0.2			
SBA-108	A	3	115	15	2	0.4	2	0.1			
SM-624	A	4	115	2.5	2	0.4	2	0.1			
S-1000	A	4	115	11.3	3.5V	0.8	3.5	0.3			
S-29	A	1	110	6.6	4.5V	0.5	4.5V	0.2			
S-5	A	3	110	3.3	2V	0.6	2V	0.1			
<i>PP</i> S-2323	A	3	115	11.3	2.5V	0.6	2.5V	0.1			
(LCH) S-4004	A	3	115	11.3	2V	0.8	2V	0.2			
SFC-314	A	2	115	5.8	3V	0.3	3V	0.1			
AS-310	A	2	115	7.3	3V	1.0	3V	0.2			
AS-4130	A	2	120	23	4V	0.8	4V	0.2			
AMPHIB AREA	<i>auto</i>	<i>control</i>	115	2.1	2V	0.2	2V	0.1			

FIRST DC OUTPUT: \_\_\_\_\_  
 SECOND DC OUTPUT: \_\_\_\_\_  
 THIRD DC OUTPUT: \_\_\_\_\_  
 GENERAL COMMENTS: \_\_\_\_\_

SIGNATURE OF INSPECTOR \_\_\_\_\_ DATE \_\_\_\_\_

1000000

2.0	1.0	2.0	4				
1.0	2	2.0	2				
1.0	2	2.0	2				
1.0	2	2.0	2				
2.0	2.0	2.0	2.0				
2.0	2.0	2.0	2.0				
1.0	2	2.0	2				
1.0	2	2.0	2				
2.0	2.0	2.0	2.0				
2.0	2.0	2.0	2.0				
1.0	2.0	2.0	2.0				
1.0	2.0	2.0	2.0				
2.0	2.0	2.0	2.0				
1.0	2.0	2.0	2.0				
2.0	2.0	2.0	2.0				
1.0	2.0	2.0	2.0				
2.0	2.0	2.0	2.0				
1.0	2.0	2.0	2.0				
2.0	2.0	2.0	2.0				
1.0	2.0	2.0	2.0				

# CATHODIC PROTECTION RECTIFIER RECORD

ACTIVITY

Marine Corps Base, Camp Lejeune, North Carolina  
 Marine Corps Air Station, New River, North Carolina

September 1987

RECTIFIER	TAP SETTING		AC INPUT		FIRST DC OUTPUT		SECOND DC OUTPUT		THIRD DC OUTPUT		REMARKS
	COURSE	FINE	VOLTS	AMPS	VOLTS	AMPS	VOLTS	AMPS	VOLTS	AMPS	
S-830	A	3	220	6.0	4	0.7	4	0.2			
STT-40	A	3	115	5.2	2	0.5	2	0.1			
STC-1070	A	2	115	24.0	2	0.3	2	0.1			
STC-606	A	3	115	7.2	2	0.5	2	0.1			
SBB-25	A	1	110	10.0	4.5	1.3	4.5	0.3			
SRR-44	A	3	115	11.3	3.5	0.6	3.5	0.2			
SBA-108	A	3	115	15.0	2	0.4	2	0.1			
SM-624	A	4	115	2.5	2	0.4	2	0.1			
S-1000	A	4	115	11.3	3.5	0.8	3.5	0.3			
S-29	A	1	110	6.6	4.5	0.5	4.5	0.2			
S-5	A	3	110	3.3	2	0.6	2	0.1			
S-2323	A	3	115	11.3	2.5	0.6	2.5	0.1			
(LCH) S-4004	A	3	115	11.3	2	0.8	2	0.2			
SFC-314	A	2	115	5.8	3	0.3	3	0.1			
AS-310	A	2	115	7.3	3	1.0	3	0.2			
AS-4130	A	2	120	23.0	4	0.8	4	0.2			
AMPHIB AREA	Auto Control		115	2.1	2	0.2	2	0.1			

FIRST DC OUTPUT:

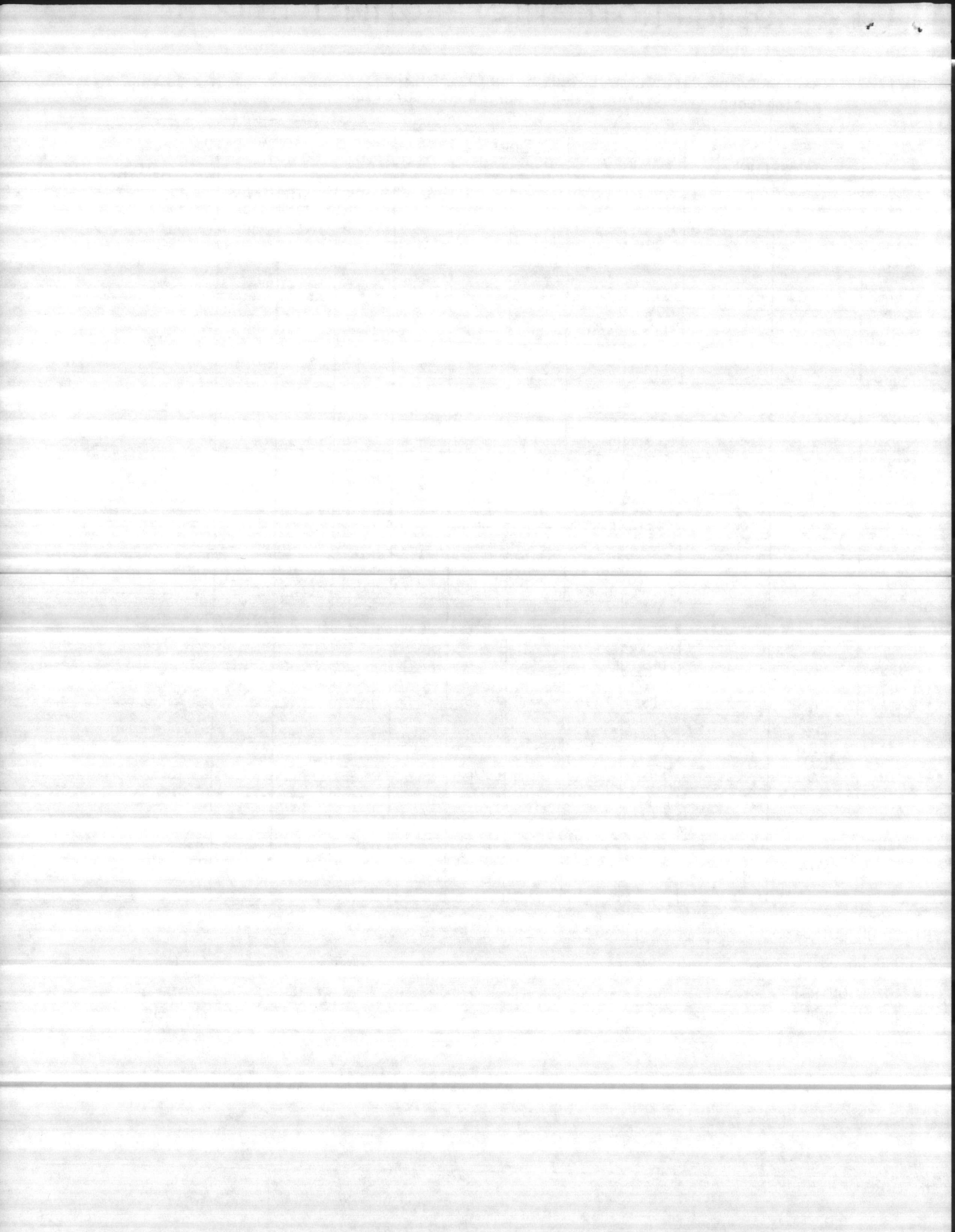
SECOND DC OUTPUT:

THIRD DC OUTPUT:

GENERAL COMMENTS:

SIGNATURE OF INSPECTOR

DATE





11330  
MAIN

From: Commanding General, Marine Corps Base, Camp Lejeune, North  
Carolina 28542-5001  
To: Commander, Atlantic Division, Naval Facilities Engineering  
Command, Norfolk, Virginia 23511 (Attn: Karl D. Liebrich,  
Code 10284

Subj: CATHODIC PROTECTION

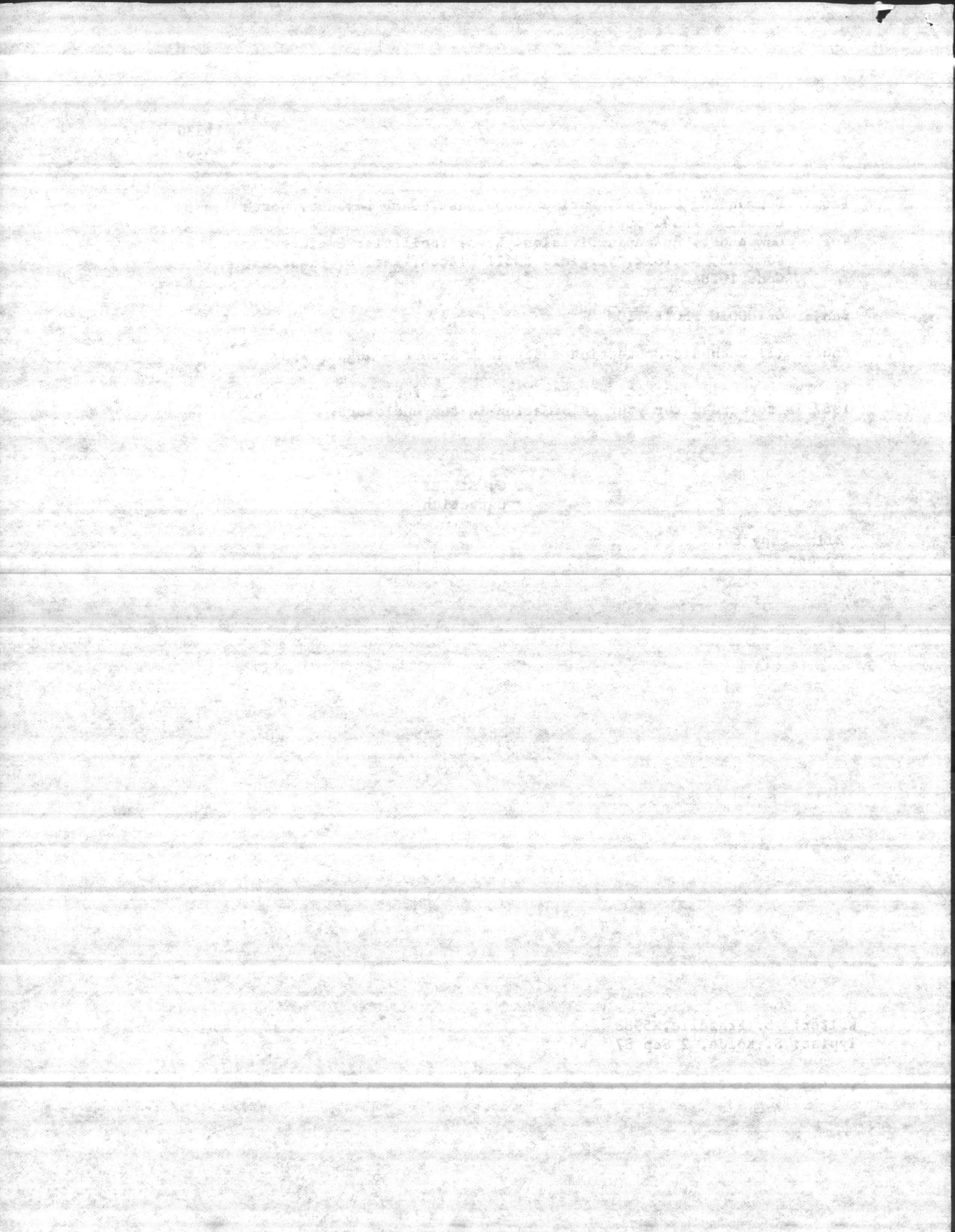
Encl: (1) Cathodic Protection Water Tank Report - August 1987

1. The Cathodic Protection Water Tank Report for the month of August  
1987 is forwarded for your information in the enclosure.

M. G. LILLEY  
By direction

Blind copy to:  
OpnsBr

Writer: B. Frazelle, X5988  
Typist: S. Kolde, 2 Sep 87



# CATHODIC PROTECTION RECTIFIER RECORD

22 AUG 1985

**ACTIVITY**

Marine Corps Base, Camp Lejeune, North Carolina  
 Marine Corps Air Station, New River, North Carolina

RECTIFIER	TAP SETTING		AC INPUT		FIRST DC OUTPUT		SECOND DC OUTPUT		THIRD DC OUTPUT		REMARKS
	COURSE	FINE	VOLTS	AMPS	VOLTS	AMPS	VOLTS	AMPS	VOLTS	AMPS	
S-830	A	3	220	6.0	5	0.7	5	0.2			
STT-40	A	3	115	5.2	4	0.5	4	0.1			
STC-1070	A	2	115	2.4	2	0.4	2	0.2			
STC-606	A	3	115	7.2	2	0.4	2	0.1			
SBB-25	A	1	110	10.0	5	1.2	5	0.3			
SRR-44	A	3	115	11.3	3.5	0.6	3.5	0.2			
SBA-108	A	3	115	15	2	0.4	2	0.1			
SM-624	A	4	115	2.5	2	0.3	2	0.1			
S-1000	A	4	115	11.3	3.5	<del>1.0</del>	3.5	0.3			
S-29	A	1	110	6.6	5V	0.5	5V	0.2			
S-5	A	3	110	3.3	2	0.6	2	0.1			
S-2323	A	3	115	11.3	2	0.5	2	0.1			
(LCH) S-4004	A	3	115	11.3	2.5	0.5	2.5	0.1			
SFC-314	A	2	115	5.8	3	0.3	3	0.1			
AS-310	A	2	115	7.3	3	1.2	3	0.3			
AS-4130	A	2	120	23.0	3	0.8	3	0.2			
AMPHIB AREA	Auto Control		115	2.1	2	0.2	2	0.1			

FIRST DC OUTPUT: \_\_\_\_\_  
 SECOND DC OUTPUT: \_\_\_\_\_  
 THIRD DC OUTPUT: \_\_\_\_\_  
 GENERAL COMMENTS: \_\_\_\_\_

SIGNATURE OF INSPECTOR \_\_\_\_\_ DATE 28 Aug 1987  
 ENCL (1)

2

11330  
MAIN

From: Commanding General, Marine Corps Base, Camp Lejeune, North  
Carolina 28542-5001

To: Commander, Atlantic Division, Naval Facilities Engineering  
Command, Norfolk, Virginia 23511 (Attn: Karl D. Liebrich,  
Code 10284)

Subj: CATHODIC PROTECTION

Encl: (1) Cathodic Protection Water Tank Report - July 1987

1. The Cathodic Protection Water Tank Report for the month of  
July 1987 is forwarded for your information in the enclosure.

M. G. LILLEY  
By direction

Blind copy to:  
OpnsBr

Writer: B. Frazelle, X5988  
Typist: S. Kolde, 5 Aug 87

10/17/58

Enclosed for the Office of the  
Director, Federal Bureau of Investigation  
Washington, D.C. 20535  
is a copy of the report of the  
Special Agent in Charge, New York  
City, dated 10/15/58.

Very truly yours,  
Special Agent in Charge

(1) Enclosed for the Office of the  
Director, Federal Bureau of Investigation  
Washington, D.C. 20535  
is a copy of the report of the  
Special Agent in Charge, New York  
City, dated 10/15/58.

Very truly yours,  
Special Agent in Charge

W. J. Sullivan  
Special Agent in Charge

Blind copy to:  
Director

Director, FBI  
Washington, D.C. 20535

# CATHODIC PROTECTION RECTIFIER RECORD

22 AUG 1985

**ACTIVITY**

Marine Corps Base, Camp Lejeune, North Carolina  
 Marine Corps Air Station, New River, North Carolina

RECTIFIER	TAP SETTING		AC INPUT		FIRST DC OUTPUT		SECOND DC OUTPUT		THIRD DC OUTPUT		REMARKS
	COURSE	FINE	VOLTS	AMPS	VOLTS	AMPS	VOLTS	AMPS	VOLTS	AMPS	
S-830	A	3	220	6.0	4	0.7	4	0.2			
STT-40	A	3	115	5.2	2	0.5	2	0.1			
STC-1070	A	2	115	24.0	2	0.3	2	0.1			
STC-606	A	3	115	7.2	2	0.5	2	0.1			
SBB-25	A	1	110	10.0	3	0.8	3	0.2			
SRR-44	A	3	115	11.3	3	0.7	3	0.2			
SBA-108	A	3	115	15.0	2	0.5	2	0.1			
SM-624	A	4	115	2.5	2	0.4	2	0.1			
S-1000	A	4	115	11.3	3	0.7	3	0.2			
S-29	A	1	110	6.6	4	0.4	4	0.1			
S-5	A	3	110	3.3	3	0.4	3	0.1			
S-2323	A	3	115	11.3	2	0.8	2	0.2			
(LCH) S-4004	A	3	115	11.3	2	0.8	2	0.2			
SFC-314	B	2	115	5.8	5	0.4	5	0.1			
AS-310	A	2	115	7.3	3	1.0	3	0.2			
AS-4130	A	2	120	23.0	4	0.8	4	0.2			
AMPHIB AREA	Auto Control		115	2.1	2	0.2	2	0.1			

FIRST DC OUTPUT:

SECOND DC OUTPUT:

THIRD DC OUTPUT:

GENERAL COMMENTS:

*Ronnie C. Vuk*

*29 July 1987*

SIGNATURE OF INSPECTOR

DATE

100

1. The first part of the paper is devoted to a general discussion of the problem. It is shown that the problem is well-posed and that the solution exists and is unique.

2. In the second part, the problem is solved numerically. The results are compared with the analytical solution and it is shown that the numerical solution is in good agreement with the analytical one.

3. The third part of the paper is devoted to a discussion of the stability of the numerical solution. It is shown that the numerical solution is stable and that the error is of order  $O(\Delta t^2)$ .

4. Finally, the paper concludes with a discussion of the results and a list of references.



11330  
MAIN

From: Commanding General, Marine Corps Base, Camp Lejeune, North  
Carolina 28542-5001  
To: Commander, Atlantic Division, Naval Facilities Engineering  
Command, Norfolk, Virginia 23511 (Attn: Karl D. Liebrich,  
Code 10284)

Subj: CATHODIC PROTECTION

Encl: (1) Cathodic Protection Water Tank Report - May 1987

1. The Cathodic Protection Water Tank Report for the month of  
May 1987 is forwarded for your information in the enclosure.

M. G. LILLEY  
By direction

Blind copy to:  
OpnsBr

Writer: B. Frazelle, X1081  
Typist: S. Kolde, 29 May 87

1987

1987

Command, Norfolk, Virginia Coast (Area 101)  
Command, Norfolk, Virginia Coast (Area 101)  
Command, Norfolk, Virginia Coast (Area 101)

TT  
TT  
TT

1. The Catholic Protection Water Tank Report for the month of  
May 1987 is forwarded for your information in the enclosure.

S. J. FLEMING  
Director

One copy for  
Director

Walter S. Kohn, Sr. by  
Walter S. Kohn, Sr.

# CATHODIC PROTECTION RECTIFIER RECORD

ACTIVITY *MCB CAMP LESUENE, N.C. ; MCAS New River*

RECTIFIER	TAP SETTING		AC INPUT		FIRST DC OUTPUT		SECOND DC OUTPUT		THIRD DC OUTPUT		REMARKS
	COURSE	FINE	VOLTS	AMPS	VOLTS	AMPS	VOLTS	AMPS	VOLTS	AMPS	
S830	A	3	220	6	5	0.7	5	0.1			
STT40	A	3	115	5.2	2	0.5	2	0.1			
STC100	A	1	115	24	3	0.3	3	0.1			
STC606	A	3	115	7.2	2	0.4	2	0.1			
SBB25	A	1	110	10	3	0.6	3	0.2			
SRR44	A	3	115	11.3	3	0.7	3	0.2			
SBA108	A	4	115	15	2	0.4	2	0.1			
SM624	A	4	115	2.5	2	0.3	2	0.1			
SI000	A	4	115	11.3	4	1.0	4	0.3			
S29	A	1	110	6.6	4	0.5	4	0.1			
S5	A	3	110	3.3	2	0.4	2	0.1			
S2323	A	3	115	11.3	2	0.6	2	0.1			
LCH4004	A	3	115	11.3	3	0.5	3	0.1			
SFC314	B	2	115	5.8	2.5	0.3	2.5	0.1			
MCAS310	A	2	115	7.3	3	1.2	3	0.3			
MCAS4130	A	2	120	2.3	3	0.7	3	0.2			

FIRST DC OUTPUT:  
SECOND DC OUTPUT:  
THIRD DC OUTPUT:

GENERAL COMMENTS:

<i>Emphain Aleg (Auto)</i>	A	1	115	2.1	2	0.2	2	0.1			
------------------------------------	---	---	-----	-----	---	-----	---	-----	--	--	--

SIGNATURE OF INSPECTOR *Ronnie e. Vule* DATE *27 May 1987*

LANTDIV 8-11014/2 (REV 3/85)

Handwritten text at the top of the page, possibly a title or header.

Handwritten text line.

Handwritten text line.

Handwritten text line.

Handwritten text line.

Handwritten text line.

Handwritten text line.

Handwritten text line.

Handwritten text line.

Handwritten text line.

Handwritten text line.

Handwritten text line.

Handwritten text line.

Handwritten text line.

Handwritten text line.

Handwritten text line.

Handwritten text line.

Handwritten text line.

Handwritten text line.

Handwritten text line.

Handwritten text line.

Handwritten text line.

Handwritten text line.

Handwritten text line.

Handwritten text line.

Handwritten text line.

Handwritten text line.

11330  
MAIN

From: Commanding General, Marine Corps Base, Camp Lejeune, North  
Carolina 28542-5001  
To: Commander, Atlantic Division, Naval Facilities Engineering  
Command, Norfolk, Virginia 23511 (Attn: Karl D. Liebrich,  
Code 10284)

Subj: CATHODIC PROTECTION

Encl: (1) Cathodic Protection Water Tank Report - April 1987

1. The Cathodic Protection Water Tank Report for the month of  
April 1987 is forwarded for your information in the enclosure.

M. G. LILLEY  
By direction

Blind Copy to:  
OpnsBr

Writer: B. Frazelle, X1081  
Typist: S. Kolde, 4 May 87

11  
1974

RECEIVED  
FEDERAL BUREAU OF INVESTIGATION  
U. S. DEPARTMENT OF JUSTICE  
WASHINGTON, D. C. 20535  
MAY 1 1974

TO: DIRECTOR, FBI (100-442888)  
FROM: SAC, NEW YORK (100-158721) (P)  
SUBJECT: [Illegible]

[Illegible signature]

100-442888-100  
MAY 1 1974

100-442888-100  
MAY 1 1974

# CATHODIC PROTECTION RECTIFIER RECORD

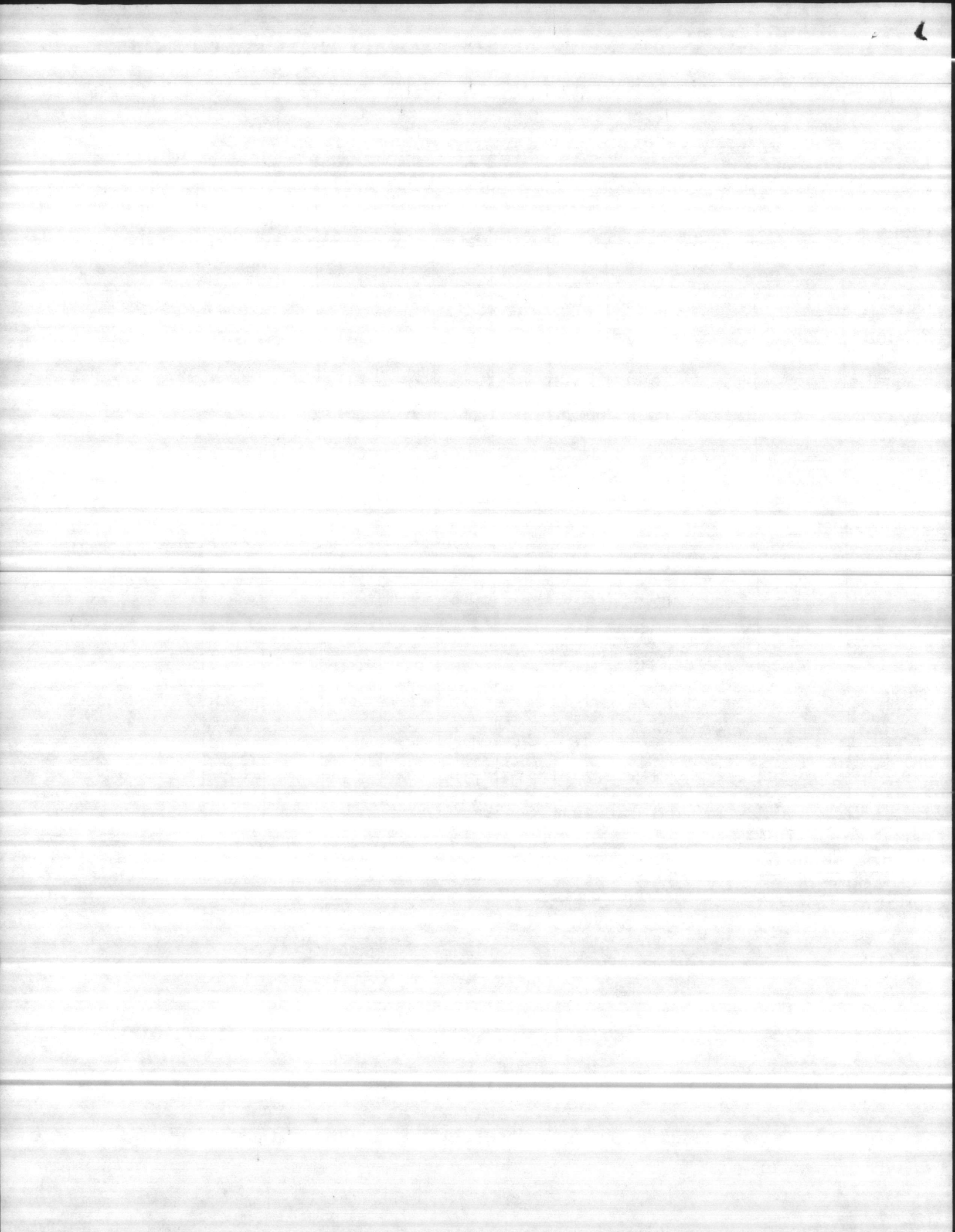
## ACTIVITY

MCB, Camp Lejeune, N.C.      MCAS, New River, N.C.

RECTIFIER	TAP SETTING		AC INPUT		FIRST DC OUTPUT		SECOND DC OUTPUT		THIRD DC OUTPUT		REMARKS
	COURSE	FINE	VOLTS	AMPS	VOLTS	AMPS	VOLTS	AMPS	VOLTS	AMPS	
S-830	A	3	220	6	5	0.7	5	0.1			
STT-40	A	3	115	5.2	2	0.5	2	0.1			
STC-1070	A	1	115	24	3	0.3	3	0.1			
STC-606	A	3	115	7.2	2	0.3	2	0.1			
SBB-25	A	1	110	10.0	3	0.6	3	0.2			
SRR-44	A	3	115	11.3	3	0.7	3	0.2			
SBA-108	A	4	115	15.0	2	0.4	2	0.1			
SM-624	A	4	115	2.5	2	0.3	2	0.1			
S-1000	A	4	115	11.3	4	1.0	4	0.3			
S-29	A	1	110	6.6	4	0.5	4	0.1			
S-5	A	3	110	3.3	2	0.4	2	0.1			
S-2323	A	3	115	11.3	2	0.6	2	0.1			
LCH-4004	A	3	115	11.3	3	0.5	3	0.1			
SFC-314	B	2	115	5.8	3	0.3	3	0.1			
MCAS-310	A	2	115	7.3	3	1.25	3	0.3			
MCAS-4130	A	2	120	23.00	3	0.7	3	0.2			
FIRST DC OUTPUT:											
SECOND DC OUTPUT:											
THIRD DC OUTPUT:											
GENERAL COMMENTS:											
Amphib. Area (New Tank)	A	3	115	2.1	2	0.2	2	0.1			

SIGNATURE OF INSPECTOR

DATE





# CATHODIC PROTECTION RECTIFIER RECORD

## ACTIVITY

MCB CAMPLEJUENE, MCAS NEW RIVER

RECTIFIER	TAP SETTING		AC INPUT		FIRST DC OUTPUT		SECOND DC OUTPUT		THIRD DC OUTPUT		REMARKS
	COURSE	FINE	VOLTS	AMPS	VOLTS	AMPS	VOLTS	AMPS	VOLTS	AMPS	
S830	A	3	220	6	5	0.7	5	0.1			
STT 40	A	3	115	5.2	2	0.5	2	0.1			
STC 1070	A	1	115	24	3	0.3	3	0.1			
STC 606	A	3	115	7.2	2	0.3	2	0.1			
SBB 25	A	1	110	10	3	0.6	3	0.2			
SRR 44	A	3	115	11.3	3	0.7	3	0.2			
SBA 108	A	4	115	15	2	0.4	2	0.1			
SM 624	A	4	115	2.5	2	0.3	2	0.1			
S1000	A	4	115	11.3	4	1.0	4	0.3			
S29	A	1	110	6.6	4	0.5	4	0.1			
S5	A	3	110	3.3	2	0.4	2	0.1			
S2323	A	3	115	11.3	2	0.6	2	0.1			
LEH4004	A	3	115	11.3	3	0.5	3	0.1			
SFC 314	B	2	115	5.8	3	0.3	3	0.1			
MCAS 310	A	2	115	7.3	3	1.25	3	0.3			
MCAS 413d	A	2	120	2.3	3	0.7	3	0.2			

FIRST DC OUTPUT:

SECOND DC OUTPUT:

THIRD DC OUTPUT:

GENERAL COMMENTS:

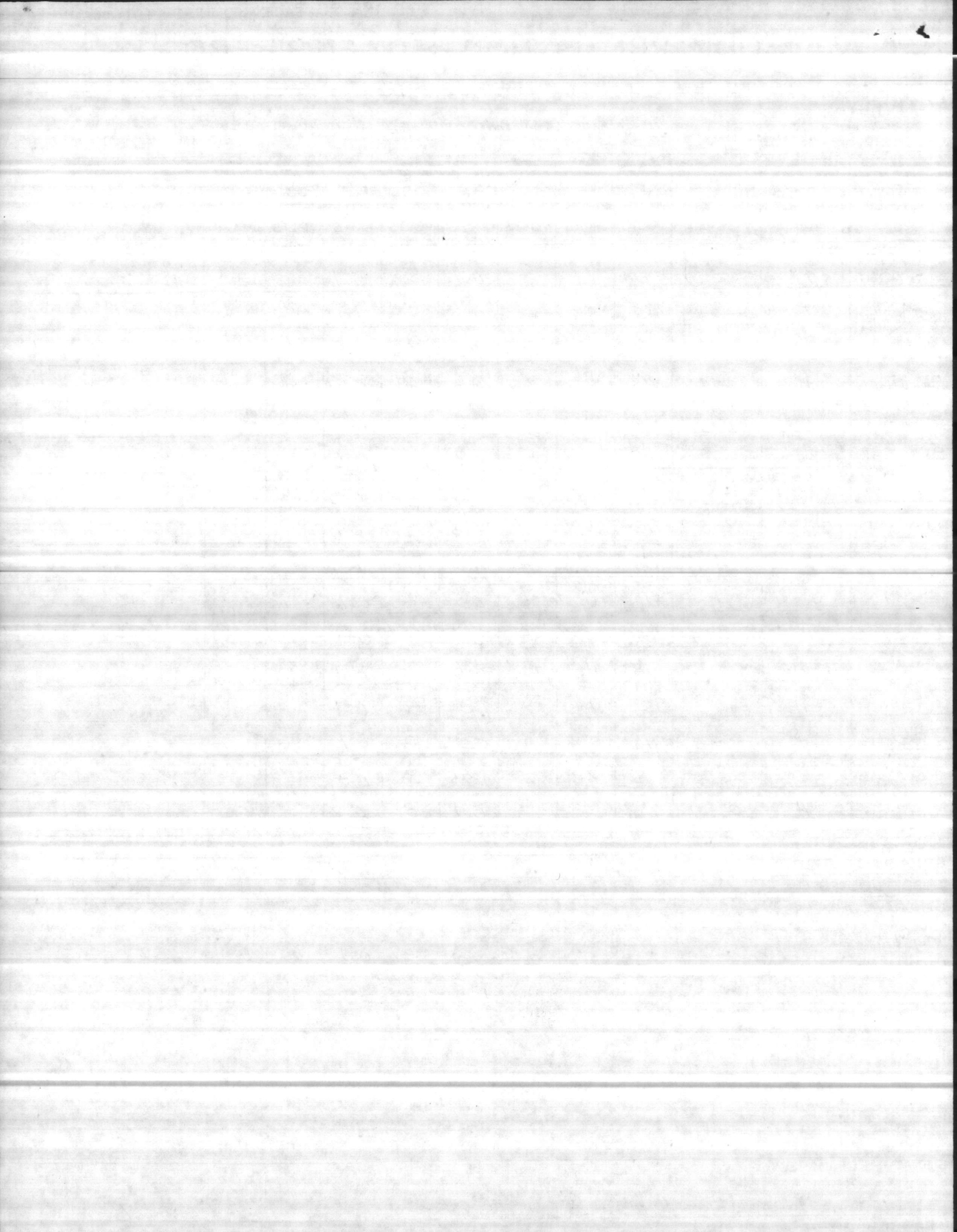
AMPHIBIAN AREA (NEW TANK)	A	3	115	2.1	2	0.2	2	0.1			
------------------------------	---	---	-----	-----	---	-----	---	-----	--	--	--

SIGNATURE OF INSPECTOR

Ronnie C. Val

DATE

27 April 87



11330  
MAIN

**From:** Commanding General, Marine Corps Base, Camp Lejeune, North Carolina 28542-5001

**To:** Commander, Atlantic Division, Naval Facilities Engineering Command, Norfolk, Virginia 23511 (Attn: Karl D. Liebrich, Code 10284)

**Subj:** CATHODIC PROTECTION

**Encl:** (1) Cathodic Protection Water Tank Report - Mar 1987

1. The Cathodic Protection Water Tank Report for the month of March 1987 is forwarded for your information in the enclosure.

M. G. LILLEY  
By direction

Blind copy to:  
OpnsBr

Writer: B. Frazelle, X1081  
Typist: S. Kolde, 1 Apr 87

Continuing research in the field of...  
The following information is...  
... (Name, Title, Address)

... (Title, Address, City, State, Zip)

... (Title, Address, City, State, Zip)

... (Name, Title, Address, City, State, Zip)

# CATHODIC PROTECTION RECTIFIER RECORD

## ACTIVITY

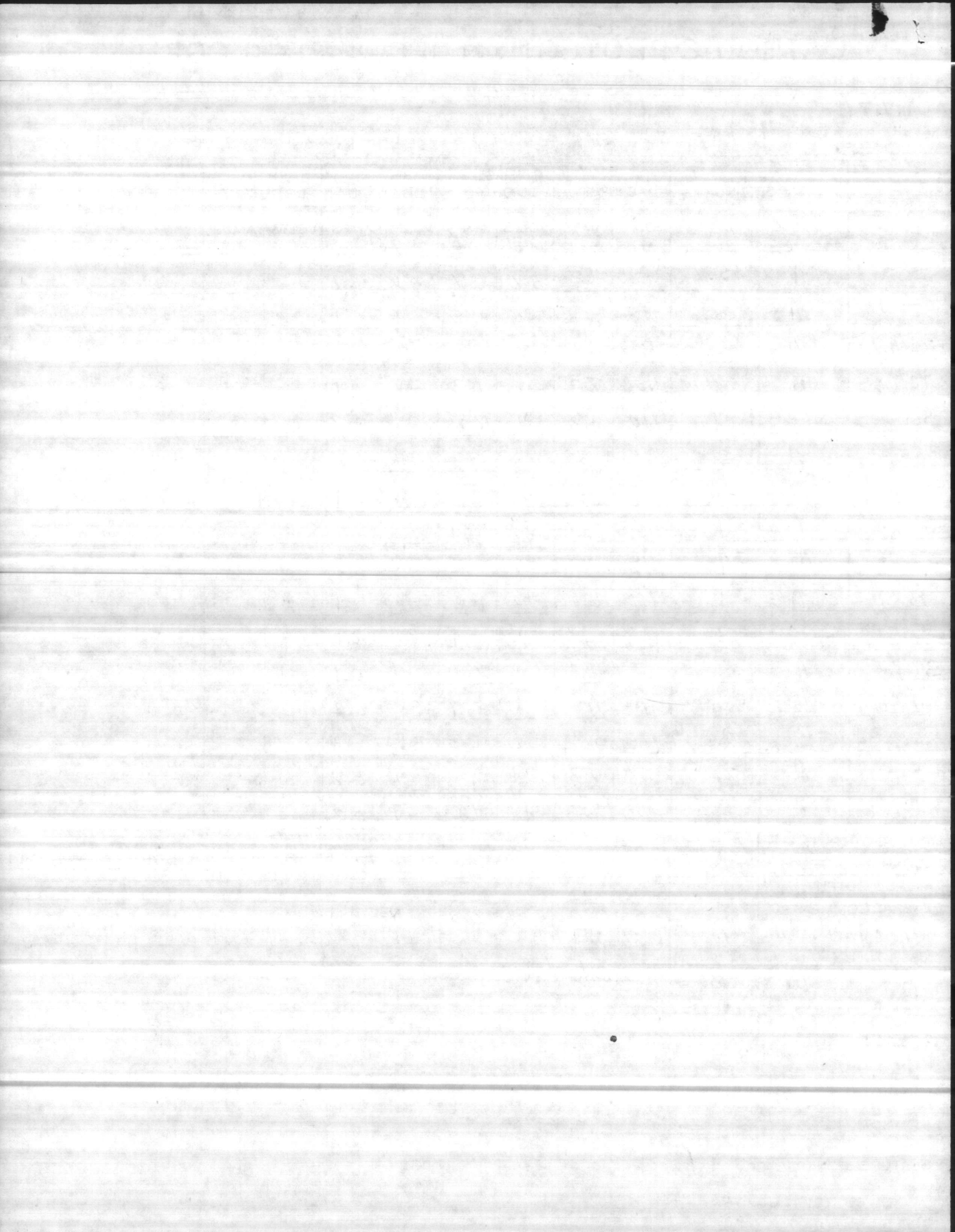
MCB, CAMP LEJUENE      MCAS      New River

RECTIFIER	TAP SETTING		AC INPUT		FIRST DC OUTPUT		SECOND DC OUTPUT		THIRD DC OUTPUT		REMARKS
	COURSE	FINE	VOLTS	AMPS	VOLTS	AMPS	VOLTS	AMPS	VOLTS	AMPS	
S830	A	3	220	6	5V	0.7	5V	0.1			
STT 40	A	3	115	5.2	2V	0.5	2V	0.1			
STC 1070	A	2	115	24	3V	0.3	3V	0.1			
STC 606	A	3	115	7.2	2V	0.3	2V	0.1			
SBB 25	A	1	110	10	3V	0.7	3V	0.2			
SRR 44	A	3	115	11.3	3V	0.7	3V	0.2			
SBA 108	A	3	115	15	2V	0.4	2V	0.1			
Sm 624	A	4	115	2.5	2V	0.4	2V	0.1			
S1000	A	4	115	11.3	4V	1.0	4V	0.3			
S29	A	1	110	6.6	4V	0.5	4V	0.1			
S5	A	3	110	3.3	2V	0.4	2V	0.1			
S2323	A	3	115	11.3	2V	0.6	2V	0.1			
LCH 4004	A	3	115	11.3	3V	0.7	3V	0.2			
SFC 314	B	2	115	5.8	3V	0.3	3V	0.1			
MCAS 310	A	2	115	7.3	3V	1.3	3V	0.2			
MCAS 4130	A	2	120	23	4V	1.0	4V	0.2			

FIRST DC OUTPUT:  
SECOND DC OUTPUT:  
THIRD DC OUTPUT:

GENERAL COMMENTS:  
*New Tank A      1      115      2.1      2V      0.2      2V      0.1*  
*Amphibious Area*  
*automatic potential Adjustment*

SIGNATURE OF INSPECTOR: *Ronnie C. Viall*      DATE: *26 Mar 87*



# CATHODIC PROTECTION RECTIFIER RECORD

22 AUG 1985

**ACTIVITY**

Marine Corps Base, Camp Lejeune, N.C.  
Marine Corps Air Station, New River, N.C.

RECTIFIER	TAP SETTING		AC INPUT		FIRST DC OUTPUT		SECOND DC OUTPUT		THIRD DC OUTPUT		REMARKS
	COURSE	FINE	VOLTS	AMPS	VOLTS	AMPS	VOLTS	AMPS	VOLTS	AMPS	
S-830	A	3	220	6.0	5	0.7	5	0.1			
STT-40	A	3	115	5.2	2	0.5	2	0.1			
STC-1070	A	2	115	24.0	3	0.3	3	0.1			
STC-606	A	3	115	7.2	2	0.3	2	0.1			
SBB-25	A	1	110	10.0	3	0.7	3	0.2			
SRR-44	A	3	115	11.3	3	0.7	3	0.2			
SBA-108	A	3	115	15.0	2	0.4	2	0.1			
SM-624	A	4	115	2.5	2	0.4	2	0.1			
S-1000	A	4	115	11.3	4	1.0	4	0.3			
S-29	A	1	110	6.6	4	0.5	4	0.1			
S-5	A	3	110	3.3	2	0.4	2	0.1			
S-2323	A	3	115	11.3	2	0.6	2	0.1			
ICH-4004	A	3	115	11.3	3	0.7	3	0.2			
SFC-314	B	2	115	5.8	3	0.3	3	0.1			
MCAS-310	A	2	115	7.3	3	1.3	3	0.2			
MCAS-4130	A	2	120	23.0	4	1.0	4	0.2			

FIRST DC OUTPUT:

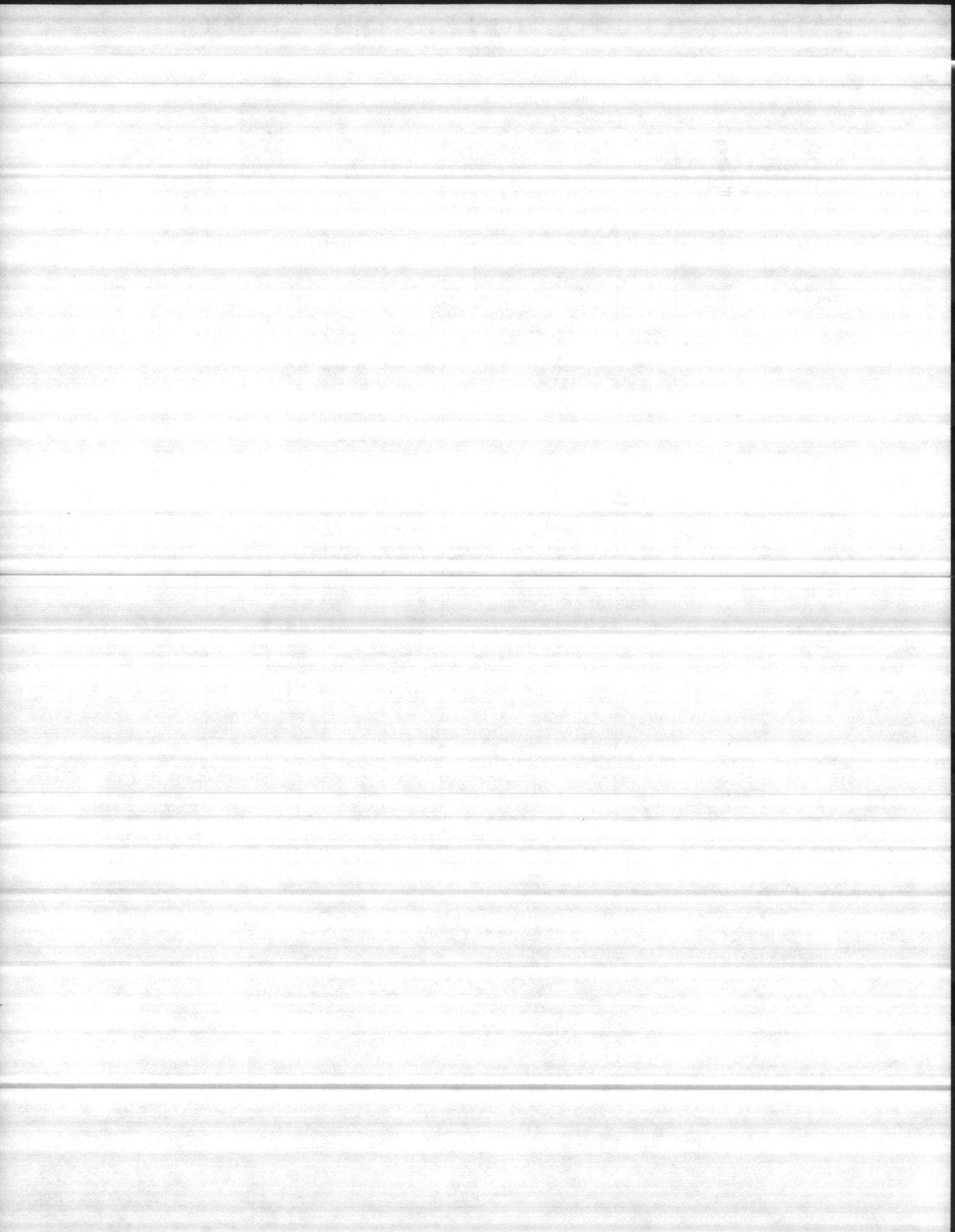
SECOND DC OUTPUT:

THIRD DC OUTPUT:

GENERAL COMMENTS:

New Tank      A      1      115      2.1      2      0.2      2      0.1  
Amphibian Area Automatic Potential Adjustment

SIGNATURE OF INSPECTOR \_\_\_\_\_ DATE \_\_\_\_\_





11330  
MAIN

From: Commanding General, Marine Corps Base, Camp Lejeune, North  
Carolina 28542-5001  
To: Commander, Atlantic Division, Naval Facilities Engineering  
Command, Norfolk, Virginia 23511 (Attn: Karl D. Liebrich,  
Code 10284)

Subj: CATHODIC PROTECTION

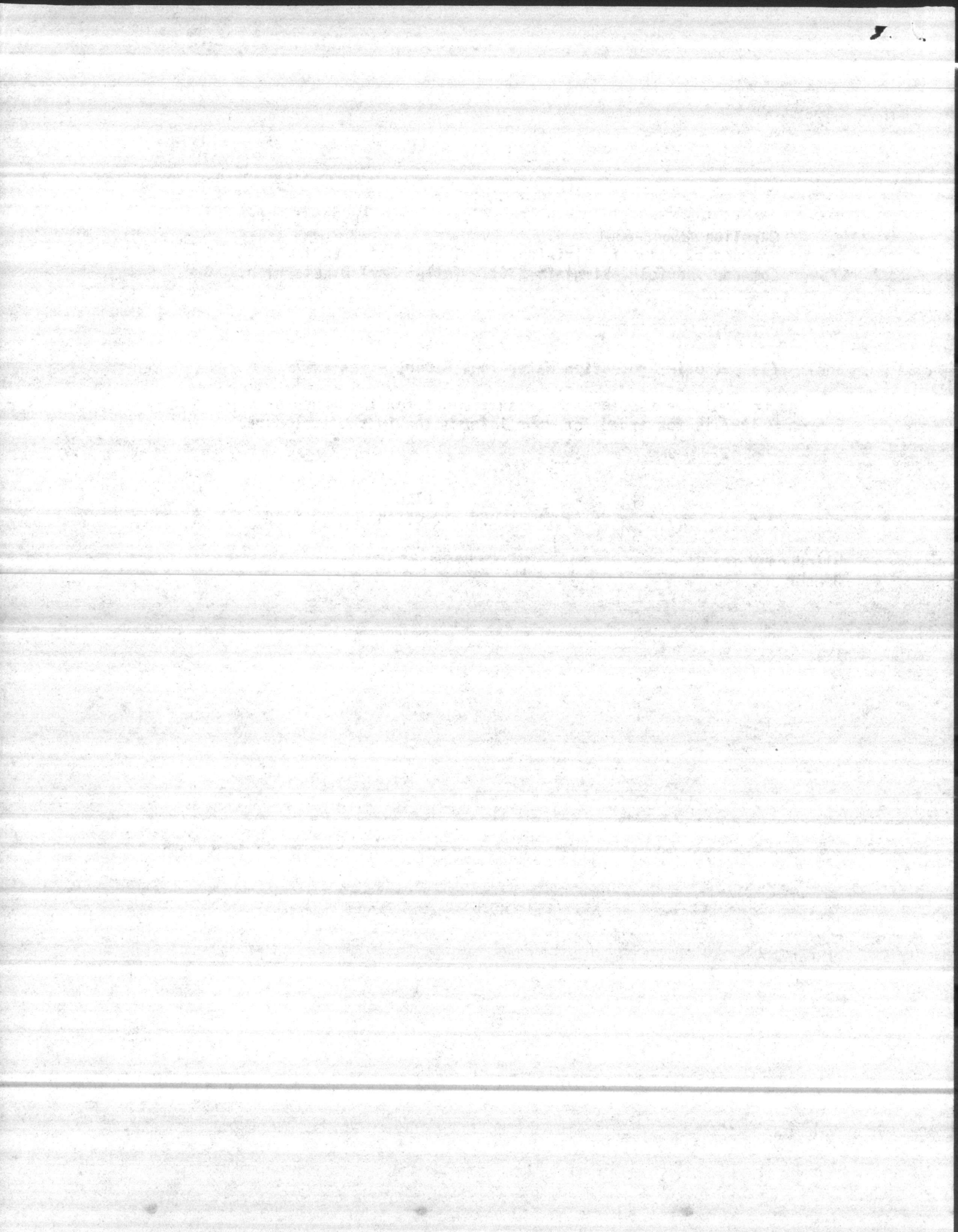
Encl: (1) Cathodic Protection Water Tank Report - Feb 1987

1. The Cathodic Protection Water Tank Report for the month of  
February 1987 is forwarded for your information in the enclosure.

M. G. LILLEY  
By direction

Blind copy to:  
OpnsBr

Writer: BFRAZELLE, X1081  
~~SHK~~  
~~24 Feb 87~~  
Typist: S. KOLDE, 24 Feb 87



# CATHODIC PROTECTION RECTIFIER RECORD

## ACTIVITY

*MCB Camp Sejane, MCAS AIR STATION*

RECTIFIER	TAP SETTING		AC INPUT		FIRST DC OUTPUT		SECOND DC OUTPUT		THIRD DC OUTPUT		REMARKS
	COURSE	FINE	VOLTS	AMPS	VOLTS	AMPS	VOLTS	AMPS	VOLTS	AMPS	
5830	A	3	220	6	5	0.7	5	0.1			
STT 40	A	3	115	5.2	2	0.5	2	0.1			
STC 1070	A	2	115	24	2.5	0.3	2.5	0.1			
STC 606	A	3	115	7.2	2	0.3	2	0.1			
SBB 25	A	1	110	10	3	0.7	3	0.2			
SRR 44	A	3	115	11.3	3	0.7	3	0.2			
SBA 108	A	3	115	15	2	0.5	2	0.2			
SM 624	A	4	115	2.5	2	0.4	2	0.1			
S1000	A	4	115	11.3	4	0.9	4	0.2			
S29	A	1	110	6.6	4	0.5	4	0.1			
S5	A	3	110	3.3	2	0.4	2	0.1			
S2323	A	3	115	11.3	2	0.5	2	0.1			
4004	A	3	115	11.3	2	0.5	2	0.1			
SFC 314	B	2	115	5.8	5	0.4	5	0.1			
MCAS 310	A	2	115	7.3	3.5V	1.25	3.5V	0.2			
MCAS 4130	A	2	120	23	4	1.0	4	0.2			

FIRST DC OUTPUT:  
SECOND DC OUTPUT:  
THIRD DC OUTPUT:

GENERAL COMMENTS:  
*New Rectifier Amplification Area*  
*A 1 115 2.1 2V/0.2V/0.1*

SIGNATURE OF INSPECTOR \_\_\_\_\_ DATE \_\_\_\_\_

1. The first part of the book is devoted to a description of the general principles of the theory of the structure of the atomic nucleus.

2. In the second part, the author discusses the properties of the nucleons and the interaction between them.

3. The third part of the book is devoted to the study of the structure of the atomic nucleus and the properties of the nuclear forces.

4. In the fourth part, the author discusses the properties of the nuclear forces and the interaction between them.

5. The fifth part of the book is devoted to the study of the structure of the atomic nucleus and the properties of the nuclear forces.

6. In the sixth part, the author discusses the properties of the nuclear forces and the interaction between them.

7. The seventh part of the book is devoted to the study of the structure of the atomic nucleus and the properties of the nuclear forces.

8. In the eighth part, the author discusses the properties of the nuclear forces and the interaction between them.

9. The ninth part of the book is devoted to the study of the structure of the atomic nucleus and the properties of the nuclear forces.

10. In the tenth part, the author discusses the properties of the nuclear forces and the interaction between them.

11330  
MAIN

From: Commanding General, Marine Corps Base, Camp Lejeune, North  
Carolina 28542-5001  
To: Commander, Atlantic Division, Naval Facilities Engineering  
Command, Norfolk, Virginia 23511 (Attn: Karl D. Liebrich,  
Code 10284)

Subj: CATHODIC PROTECTION

Encl: (1) Cathodic Protection Water Tank Report - Jan 1987

1. The Cathodic Protection Water Tank Report for the month of  
January 1987 is forwarded for your information in the enclosure.

M. G. LILLEY  
By direction

Blind copy to:  
OpnsBr

Writer: B. Frazelle, X5988  
Typist: S. Kolde, 5 Feb 87

Commanding General, Fort Belvoir, Fort  
Belvoir, Colorado  
Commanding General, Fort Belvoir, Fort  
Belvoir, Colorado  
Code 1000

Subject: CANTON PROTECTION

(1) Attached herewith is a report on the  
... The attached report is for the month of  
January 1957 is forwarded for your information in the enclosure.

J. L. BILLY  
by enclosure

11/14/57  
1000

11/14/57  
1000

# CATHODIC PROTECTION RECTIFIER RECORD

## ACTIVITY

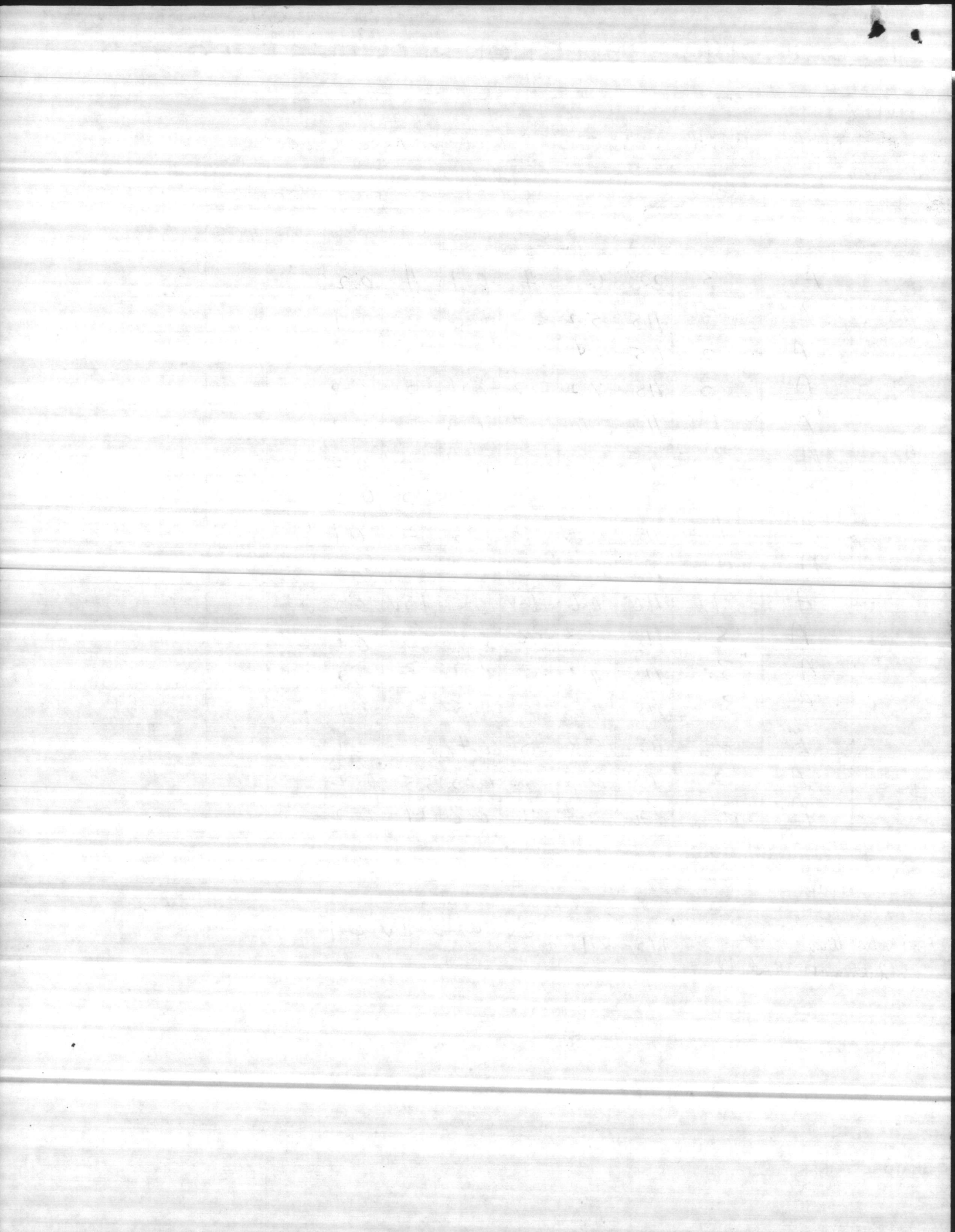
MCB CAMP LESUENE, MCAS New River

RECTIFIER	TAP SETTING		AC INPUT		FIRST DC OUTPUT		SECOND DC OUTPUT		THIRD DC OUTPUT		REMARKS
	COURSE	FINE	VOLTS	AMPS	VOLTS	AMPS	VOLTS	AMPS	VOLTS	AMPS	
5830 Beak M	A	3	220	6	4	0.7	4	0.2			
57740 77	A	3	115	5.2	2	0.6	2	0.1			
57C 1070 CG South	A	2	115	24	2	0.3	2	0.1			
57C 606 CG North	A	3	115	7.2	2	0.4	2	0.2			
58825 CHB	A	1	110	10	3	0.7	3	0.2			
58R44 RR	A	3	115	11.3	3.5V	0.8	3.5V	0.2			
58A108 OB	A	3	115	15	2	0.5	2	0.2			
5M 624 MP	A	4	115	2.5	2	0.3	2	0.1			
51000 IND.	A	4	115	11.3	3	0.7	3	0.2			
529 5th AREA	A	1	110	6.6	4.5V	0.5	4.5V	0.2			
55 2ND AREA	A	3	110	3.3	3	0.4	3	0.1			
52323 PP	A	3	115	11.3	3	0.7	3	0.2			
4004 M PARK	A	3	115	11.3	2	0.5	2	0.1			
5FC 314 FORREST	B	2	115	5.8	5	0.4	5	0.1			
310 Campbell	A	2	115	7.3	3.5	1.25	3.5	0.2			
4130 White	A	2	120	23	4	0.8	4	0.2			

FIRST DC OUTPUT:  
SECOND DC OUTPUT:  
THIRD DC OUTPUT:

GENERAL COMMENTS:  
Amphibian Area      115 2.1      2V 0.2      2V 0.1  
Automatic Rectifier

SIGNATURE OF INSPECTOR \_\_\_\_\_ DATE \_\_\_\_\_





11330  
MAIN

From: Commanding General, Marine Corps Base, Camp Lejeune, North  
Carolina 28542-5001  
To: Commander, Atlantic Division, Naval Facilities Engineering  
Command, Norfolk, Virginia 23511 (Attn: Karl D. Liebrich,  
Code 10284)

Subj: CATHODIC PROTECTION

Encl: (1) Cathodic Protection Water Tank Report - Dec 1986

1. The Cathodic Protection Water Tank Report for the month of  
December 1986 is forwarded for your information in the enclosure.

M. G. LILLEY  
By direction

Blind Copy to:  
OpnsBr

NSC  
30 Dec 86

11/11/54

Commanding General, Fort...  
Carolina 2807-0001  
Commander, Adjutant General's School  
Fort... Virginia  
(and others)

OFFICE OF THE ADJUTANT GENERAL

1. The Adjutant General's School...  
is a school for your...  
in the Adjutant General's School...

Adjutant General's School

11/11/54  
Copy for...

22 AUG 1985

# CATHODIC PROTECTION RECTIFIER RECORD

## ACTIVITY

MCB Camp Lejeune, N.C.

RECTIFIER	TAP SETTING		AC INPUT		FIRST DC OUTPUT		SECOND DC OUTPUT		THIRD DC OUTPUT		REMARKS
	COURSE	FINE	VOLTS	AMPS	VOLTS	AMPS	VOLTS	AMPS	VOLTS	AMPS	
S830	A	3	220	6	4	0.7	4	0.2			
STT40	A	3	115	5.2	2	0.5	2	0.1			
STC1070	A	1	115	24	2	0.3	2	0.1			
STC606	A	3	115	7.2	2	0.5	2	0.1			
SBB25	A	1	110	10	3	0.8	3	0.2			
SRR44	A	3	115	11.3	3	0.7	3	0.2			
SBA108	A	3	115	15	2	0.5	2	0.1			
Sm624	A	4	115	2.5	2	0.4	2	0.1			
S1000	A	4	115	11.3	3	0.7	3	0.2			
S29	A	1	110	6.6	4	0.4	4	0.1			
S5	A	3	110	3.3	3	0.4	3	0.1			
S2323	A	3	115	11.3	2	0.8	2	0.2			
Let4004	A	3	115	11.3	2	0.8	2	0.2			
SFC314	B	2	115	5.8	5	0.4	5	0.1			
mcas 310	A	2	115	7.3	3	1.2	3	0.2			
mcas 4130	A	2	120	2.3	4	0.8	4	0.2			

FIRST DC OUTPUT:  
 SECOND DC OUTPUT:  
 THIRD DC OUTPUT:

GENERAL COMMENTS: *115 2.1 2 0.2 2 0.1*  
*New Amphibia Tank automatic adjust with installed reference*

SIGNATURE OF INSPECTOR \_\_\_\_\_ DATE \_\_\_\_\_

3 0 8 3 3 0 3

3 0 3 3 3 0 3

3 0 3 3 3 0 3

3 0 3 3 3 0 3

3 0 3 3 3 0 3

3 0 3 3 3 0 3

3 0 3 3 3 0 3

3 0 3 3 3 0 3

3 0 3 3 3 0 3

3 0 3 3 3 0 3

3 0 3 3 3 0 3

3 0 3 3 3 0 3

3 0 3 3 3 0 3

3 0 3 3 3 0 3

3 0 3 3 3 0 3

3 0 3 3 3 0 3

3 0 3 3 3 0 3

3 0 3 3 3 0 3

3 0 3 3 3 0 3

3 0 3 3 3 0 3

3 0 3 3 3 0 3

3 0 3 3 3 0 3

11330  
MAIN

**From:** Commanding General, Marine Corps Base, Camp Lejeune, North Carolina 28542-5001

**To:** Commander, Atlantic Division, Naval Facilities Engineering Command, Norfolk, Virginia 23511 (Attn: Karl D. Liebrich, Code 10284)

**Subj:** CATHODIC PROTECTION

**Encl:** (1) Cathodic Protection Water Tank Report - Nov 1986

1. The Cathodic Protection Water Tank Report for the month of November 1986 is forwarded for your information in the enclosure.

M. G. LILLEY  
By direction

Blind Copy to:  
OpnsBr

SHK  
26 Nov 1986

1. The following information was obtained from the files of the FBI, New York Office, dated 1/15/54, in connection with the investigation of the activities of the Communist Party, New York City, and its various branches and affiliates in the New York City area.

2. The following information was obtained from the files of the FBI, New York Office, dated 1/15/54, in connection with the investigation of the activities of the Communist Party, New York City, and its various branches and affiliates in the New York City area.

3. The following information was obtained from the files of the FBI, New York Office, dated 1/15/54, in connection with the investigation of the activities of the Communist Party, New York City, and its various branches and affiliates in the New York City area.

Very truly yours,  
Special Agent in Charge

1/15/54  
New York

1/15/54  
New York

22 AUG 1985

## CATHODIC PROTECTION RECTIFIER RECORD

## ACTIVITY

MCB Camp Lejeune, N.C.

RECTIFIER	TAP SETTING		AC INPUT		FIRST DC OUTPUT		SECOND DC OUTPUT		THIRD DC OUTPUT		REMARKS
	COURSE	FINE	VOLTS	AMPS	VOLTS	AMPS	VOLTS	AMPS	VOLTS	AMPS	
S830	A	3	220	6	4	0.7	4	0.2			
STT 40	A	3	115	5.2	2	0.5	2	0.1			
STC 1070	A	2	115	3.4	2	0.3	2	0.1			
STC 606	A	3	115	7.2	2	0.5	2	0.1			
SBB 25	A	1	110	10	3	0.8	3	0.2			
SRR 44	A	3	115	11.3	3	0.7	3	0.2			
SBA 108	A	3	115	15	2	0.4	2	0.1			
Sm 624	A	4	115	2.5	2	0.4	2	0.1			
S 1000	A	4	115	11.3	3	0.7	3	0.2			
S 29	A	1	110	6.6	5	0.5	5	0.1			
S 5	A	3	110	3.3	3	0.5	3	0.1			
S2323	A	3	115	11.3	2	0.7	2	0.2			
4004	A	3	115	11.3	2	0.8	2	0.2			
SFC 314	B	2	115	5.8	5	0.5	5	0.1			
310	A	2	115	7.3	3	1.2	3	0.2			
4130	A	2	120	23	4	1.2	4	0.3			

FIRST DC OUTPUT:

SECOND DC OUTPUT:

THIRD DC OUTPUT:

GENERAL COMMENTS:

Amphibious Area  
New TankAutomatic  
Rectifier

0.2 0.1/2V

SIGNATURE OF INSPECTOR

DATE

The first part of the paper discusses the importance of maintaining accurate records of all transactions. It is essential for the business to have a clear and concise record of all income and expenses. This will help in determining the profit or loss for the period.

The second part of the paper discusses the importance of maintaining accurate records of all assets and liabilities. This will help in determining the net worth of the business at any given time.

The third part of the paper discusses the importance of maintaining accurate records of all taxes paid. This will help in determining the tax liability for the period.

The fourth part of the paper discusses the importance of maintaining accurate records of all debts. This will help in determining the amount of debt to be repaid.

The fifth part of the paper discusses the importance of maintaining accurate records of all investments. This will help in determining the return on investment.

In conclusion, it is essential for the business to maintain accurate records of all transactions, assets, liabilities, taxes, debts, and investments. This will help in determining the profit or loss, net worth, tax liability, amount of debt, and return on investment.

The following table shows the results of the calculations:

Item	Value
Income	1000
Expenses	500
Profit	500
Assets	2000
Liabilities	1000
Net Worth	1000
Taxes Paid	100
Tax Liability	100
Debts	500
Investments	1000
Return on Investment	10%



11330  
MAIN

From: Commanding General, Marine Corps Base, Camp Lejeune, North  
Carolina 28542-5001  
To: Commander, Atlantic Division, Naval Facilities Engineering  
Command, Norfolk, Virginia 23511 (Attn: Karl D. Liebrich,  
Code 10284)

Subj: CATHODIC PROTECTION

Encl: (1) Cathodic Protection Water Tank Report - Oct 1986

1. The Cathodic Protection Water Tank Report for the month of  
October 1986 is forwarded for your information in the enclosure.

M. G. LILLEY  
By direction

Blind Copy to:  
OpnsBr

SHK  
4 Nov 1986

11-21-52  
11-21-52  
The following information was obtained from the records of the  
Internal Security - Communist File, New York Office, dated  
11-21-52, regarding the activities of the following persons:  
Name: [Name] Address: [Address] Date of Birth: [Date]

[Name] was born on [Date] at [Location]. He is currently residing at [Address]. He is employed as [Occupation] at [Company]. He is a member of [Organization]. He is active in the [Activity].

W. E. Miller  
Director

21st page of  
copy

NOV 1952

# CATHODIC PROTECTION RECTIFIER RECORD

## ACTIVITY

MCB Camp Lejeune, N.C.

RECTIFIER	TAP SETTING		AC INPUT		FIRST DC OUTPUT		SECOND DC OUTPUT		THIRD DC OUTPUT		REMARKS
	COURSE	FINE	VOLTS	AMPS	VOLTS	AMPS	VOLTS	AMPS	VOLTS	AMPS	
S830	A	3	220	6	4	0.7	4	0.2			
STT40	A	3	115	5.2	2	0.5	2	0.1			
STC 1070	A	1	115	24	2	0.3	2	0.1			
STC 606	A	3	115	7.2	2	0.5	2	0.1			
SBB 25	A	1	110	10	3	0.8	3	0.2			
SRR 44	A	3	115	11.3	3	0.8	3	0.2			
SBA 108	A	3	115	15	2	0.4	2	0.1			
SM 624	A	4	115	2.5	2	0.4	2	0.1			
S1000	A	4	115	11.3	3	0.7	3	0.2			
S29			maint. on		rectifier						
S5	A	3	110	3.3	3	0.5	3	0.1			
S2323	A	3	115	11.3	2	0.6	2	0.2			
LH4004	A	3	115	11.3	2	0.7	2	0.2			
SFC 314	B	2	115	5.8	5	0.5	5	0.18			
MCAS 310	A	2	115	7.3	3	1.2	3	0.2			
MCAS <sup>430</sup> <del>310</del>	A	2	120	23	4	1.2	4	0.3			

FIRST DC OUTPUT:

SECOND DC OUTPUT:

THIRD DC OUTPUT:

GENERAL COMMENTS:

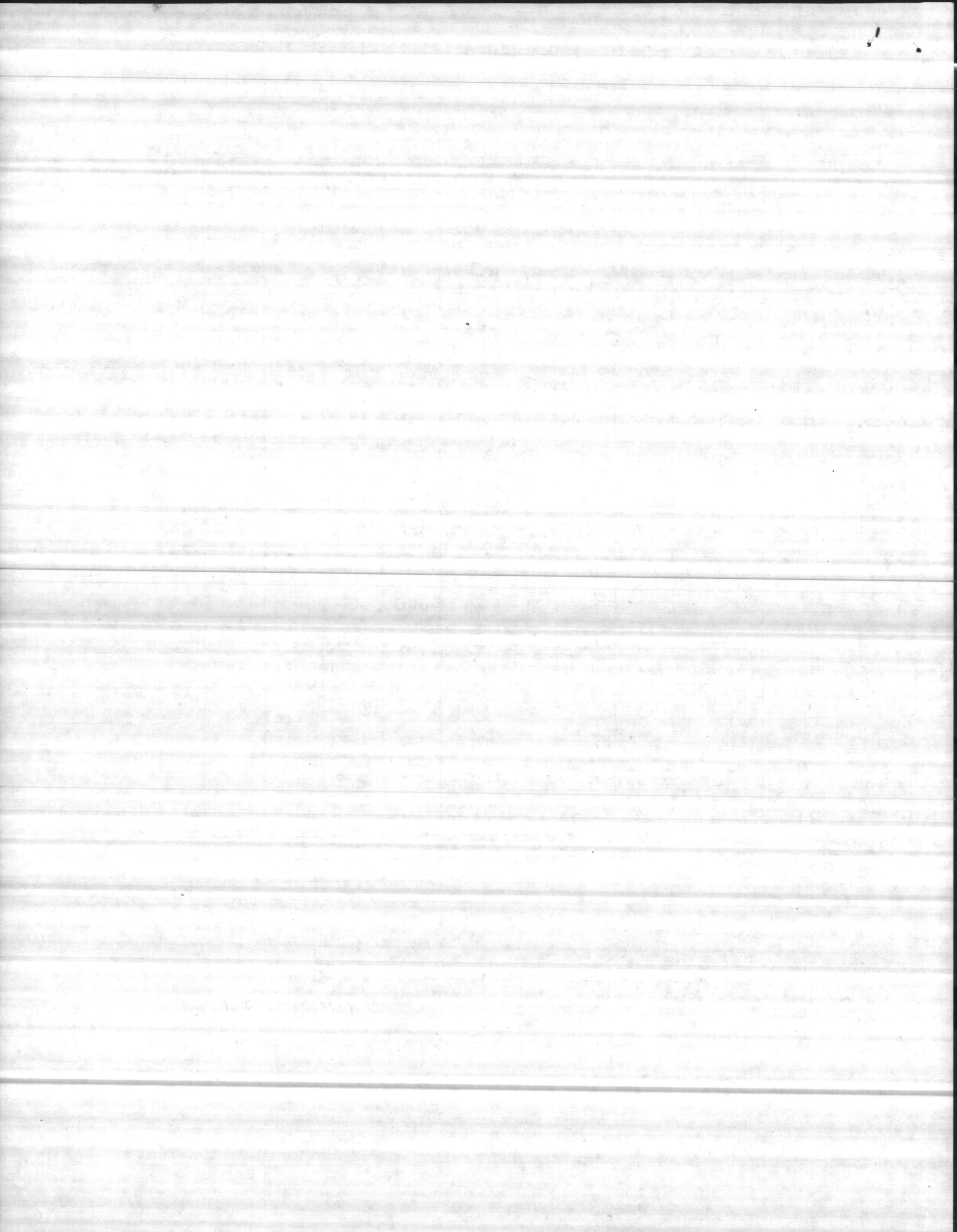
New Tank at Amphibian Area  
Automatic operation to maintain .9V potential  
0.2 0.1 2VDC output AC input Volts Amps  
115 2.1

SIGNATURE OF INSPECTOR

Ronnie Juh

DATE

28 Oct 86



11330  
MAIN

From: Commanding General, Marine Corps Base, Camp Lejeune, North  
Carolina 28542-5001

To: Commander, Atlantic Division, Naval Facilities Engineering  
Command, Norfolk, Virginia 23511 (Attn: Karl D. Liebrich,  
Code 10284)

Subj: CATHODIC PROTECTION

Encl: (1) Cathodic Protection Water Tank Report - June 1987

1. The Cathodic Protection Water Tank Report for the month of  
June 1987 is forwarded for your information in the enclosure.

M. G. LILLEY  
By direction

Blind copy to:  
OpnsBr

Writer: B. Frazelle, X1081  
Typist: S. Kolde, 30 Jun 87



Continued from page 101  
The following information was obtained from the records of the  
Department of the Interior, Bureau of Land Management, on  
the subject of the above-captioned tract.

The tract described above is situated in the  
County of [redacted] State of [redacted].  
It is bounded on the north by [redacted] on the south by [redacted] on the east by [redacted] and on the west by [redacted].

Very truly yours,  
[redacted]

Special Agent in Charge  
[redacted]

Approved: [redacted]  
Special Agent in Charge

# CATHODIC PROTECTION RECTIFIER RECORD

22 AUG 1985

**ACTIVITY** Marine Corps Base, Camp Lejeune, North Carolina  
 Marine Corps Air Station, New River, North Carolina

RECTIFIER	TAP SETTING		AC INPUT		FIRST DC OUTPUT		SECOND DC OUTPUT		THIRD DC OUTPUT		REMARKS
	COURSE	FINE	VOLTS	AMPS	VOLTS	AMPS	VOLTS	AMPS	VOLTS	AMPS	
S-830	A	3	220	6.0	5	0.7	5	0.1			
STT-40	A	3	115	5.2	2	0.4	2	0.1			
STC-1070	A	2	115	24.0	2	0.4	2	0.1			
STC-606	A	3	115	7.2	2	0.5	2	0.1			
SBB-25	A	1	110	10.0	3	0.6	3	0.2			
SRR-44	A	3	115	11.3	3	0.7	3	0.2			
SBA-108	A	3	115	15.0	2	0.4	2	0.1			
SM-624	A	4	115	2.5	2	0.3	2	0.1			
S-1000	A	4	115	11.3	4	1.0	4	0.3			
S-29	A	1	110	6.6	4	0.5	4	0.1			
S-5	A	3	110	3.3	2	0.4	2	0.1			
S-2323	A	3	115	11.3	2	0.5	2	0.1			
(LCH) S-4004	A	3	115	11.3	3	0.5	3	0.1			
SFC-314	B	2	115	5.8	3	0.3	3	0.1			
AS-310	A	2	115	7.3	4	1.2	4	0.3			
AS-4130	A	2	120	23.0	4	1.0	4	0.2			
AMPHIB AREA	Auto Control		115	2.1	2	0.2	2	0.1			

FIRST DC OUTPUT:

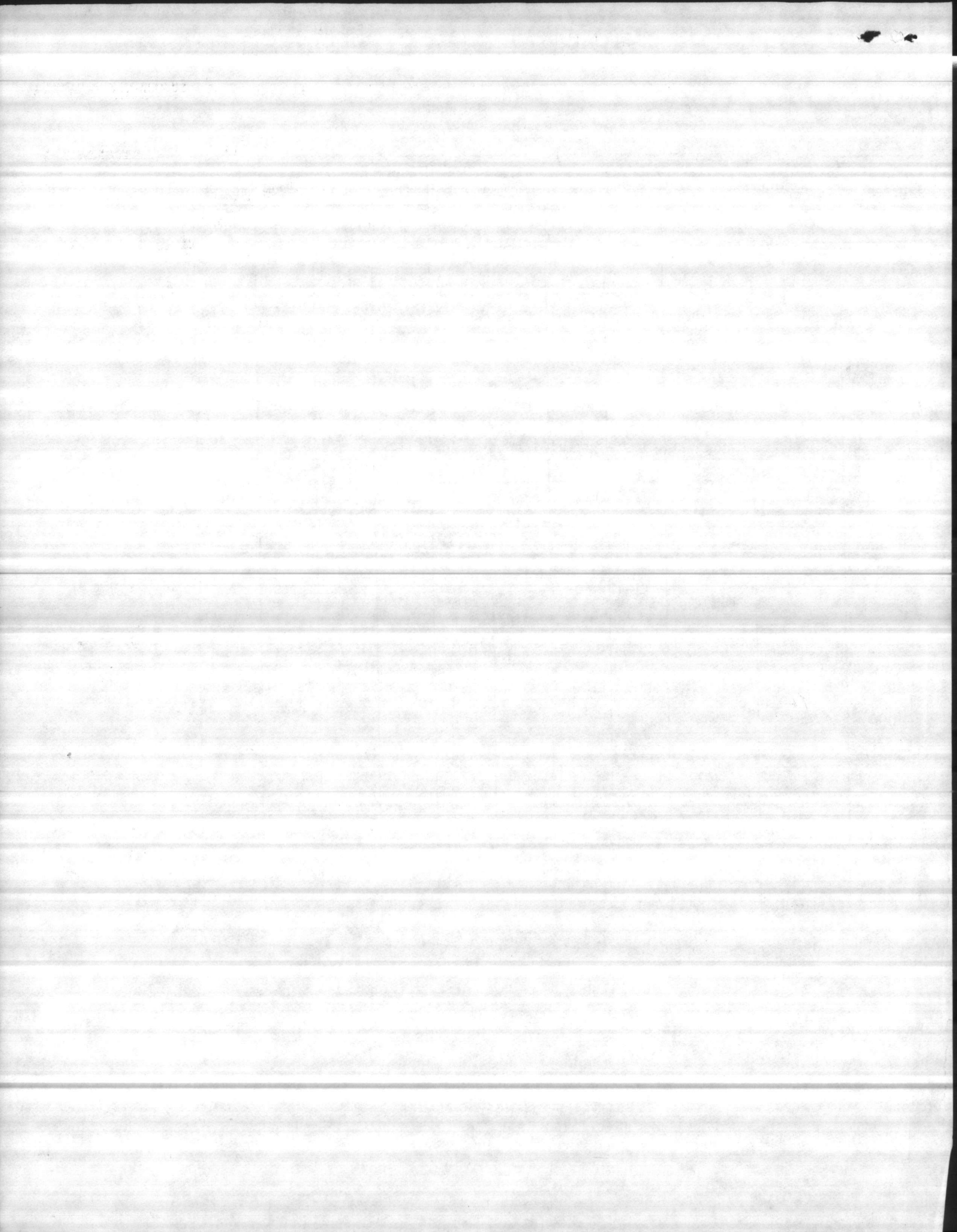
SECOND DC OUTPUT:

THIRD DC OUTPUT:

GENERAL COMMENTS:

SIGNATURE OF INSPECTOR

DATE





# CATHODIC PROTECTION RECTIFIER RECORD

**ACTIVITY**

mcb, CAMP LEJUENE, N.C.

RECTIFIER	TAP SETTING		AC INPUT		FIRST DC OUTPUT		SECOND DC OUTPUT		THIRD DC OUTPUT		REMARKS
	COURSE	FINE	VOLTS	AMPS	VOLTS	AMPS	VOLTS	AMPS	VOLTS	AMPS	
S830	A	3	220	6	5	0.7	5	0.1			
STT 40	A	3	115	5.2	2	0.4	2	0.1			
STC 1070	A	2	115	24	2	0.4	2	0.1			
STC 606	A	3	115	7.2	2	0.5	2	0.1			
SBB 25	A	1	110	10	3	0.6	3	0.2			
SRR 44	A	3	115	11.3	3	0.7	3	0.2			
SBA 108	A	3	115	15	2	0.4	2	0.1			
Sm 624	A	4	115	2.5	2	0.3	2	0.1			
S1000	A	4	115	11.3	4	1.0	4	0.3			
S29	A	1	110	6.6	4	0.5	4	0.1			
S5	A	3	110	3.3	2	0.4	2	0.1			
S2323	A	3	115	11.3	2	0.5	2	0.1			
4004	A	3	115	11.3	3	0.5	3	0.1			
SFC 314	B	2	115	5.8	3	0.3	3	0.1			
310	A	2	115	7.3	4	1.2	4	0.3			
4130	A	2	120	23	4	1.0	4	0.2			

FIRST DC OUTPUT:

SECOND DC OUTPUT:

THIRD DC OUTPUT:

GENERAL COMMENTS: Automatic Control

115	2.1	2	0.2	2	0.1	Amphibian AREA
-----	-----	---	-----	---	-----	----------------

216-337-7861  
4/24  
Tom Kinnel

SIGNATURE OF INSPECTOR

Ronnie C. Vuk

DATE

25 June 87

THE UNIVERSITY OF CHICAGO

PHYSICS DEPARTMENT

PHYSICS 309

LECTURE 10

STATISTICAL MECHANICS

ENTROPY

AND INFORMATION

THEORY

OF QUANTUM

STATISTICAL

MECHANICS

AND INFORMATION

THEORY

OF QUANTUM

STATISTICAL

MECHANICS

AND INFORMATION

THEORY

OF QUANTUM

STATISTICAL

MECHANICS

AND INFORMATION

THEORY

OF QUANTUM

STATISTICAL

MECHANICS