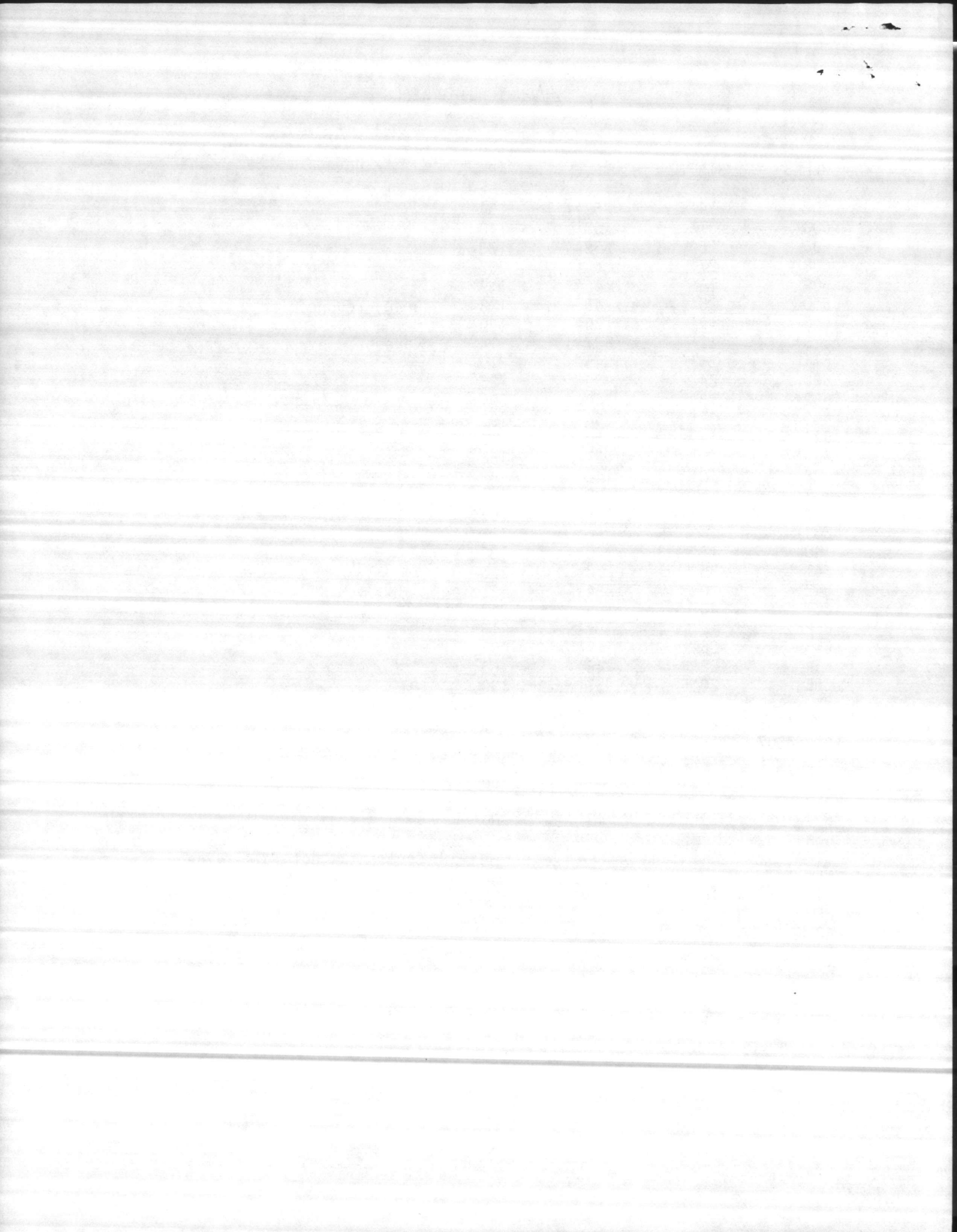


HADNOT POINT WELLS

<u>WELLS</u>	<u>STATIC</u>	<u>PUMPING LEVEL</u>	<u>GPM</u>	<u>COMMENTS</u>
602	14'	58'	154	
603	31'	53'	140	
606	16'	38'	183	
608	27'	48'	207	
609	16'	46'	119	
610	25'	48'	128	Being rescheduled
613	19'	39'	190	
615	22'	37'	214	Caved - contract for replacement
616	26'	45'	210	
620	24'	39'	128	
632	13'	40'	201	
633	37'	54'	197	
634	14'	50'	219	
635	28'	51'	151	
636	18'	46'	143	
637	65'	105'	130	
638	29'	105'	195	
639	4'	56'	115	
640	13'	40'	183	
641	25'	70'	335	
642	20'	84'	125	
651	40'	109'	242	
652	6'	88'	216	
653	35'	64'	197	
654	28'	46'	60	
655	20'	51'	130	
NEW				
LCH-4006	25'	70'	450	
LCH-4007	35'	62'	104	
NEW				
601	-	-	150	
NEW				
611	35'	49'	300	
NEW				
612	-	-	-	Contract - not in service
NEW				
614	15'	80'	300	
NEW				
621	18'	55'	200	
NEW				
626	-	-	-	Contract - not in service
NEW				
627	29'	78'	280	
639	4'	96'	200	



HOLCOMB BLVD WELLS

<u>WELLS</u>	<u>STATIC</u>	<u>PUMPING LEVEL</u>	<u>GPM</u>	<u>COMMENTS</u>
643	12'	53'	192	
644	23'	65'	210	
645	19'	40'	201	
646	21'	32'	133	
647	23'	40'	200	
648	6'	85'	267	
649	8'	82'	257	
650	15'	75'	349	

