

HADNOT POINT WATER TREATMENT PLANT

SAMPLE POINT	ppb										DETECTION LIMIT 10 ppb
	RAW	TREATED	601	602	603	608	634	637	642		
SAMPLE DATE	12/4/84	12/4/84	12/4/84	11/30/84	12/4/84	12/4/84	12/4/84	12/4/84	12/4/84	12/4/84	
BENZENE	0	0	0	121	0	0	NO	NO	NO		
CHLOROFORM	10	16					PEAKS	PEAKS	PEAKS		
BROMODICHLOROMETHANE	6	10					PEAKS	PEAKS	PEAKS		
TRICHLOROETHYLENE	46	196	207	1600	4.6	110	↓	↓	↓		
TRANS 1,2-DICHLOROETHYLENE	15	83	88	630		5.4	↓	↓	↓		
1,1,2,2-TETRACHLOROETHANE	0	0		24			↓	↓	↓		

WELL 602 SHUT DOWN 30 NOV 1984. WELLS ~~601, 603~~ 601-603 SHUT DOWN ON 6 DEC 1984
 ABOVE SAMPLES SHIPPED OUT ON 4 DEC 1984 BY FEDERAL EXPRESS.

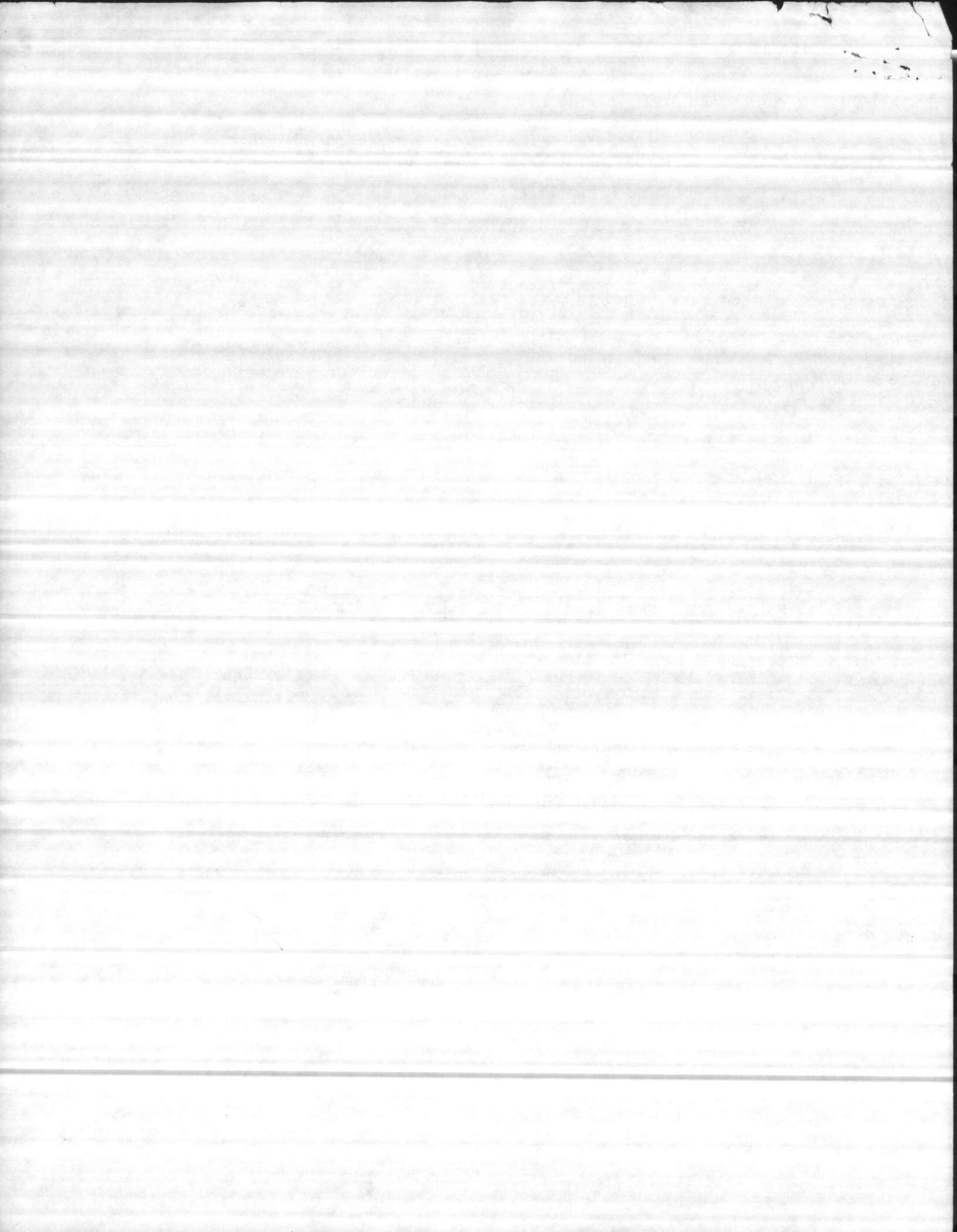
-b

SAMPLE POINT	TREATED	601	602	603	608	634	637	642
SAMPLE DATE	12/10/84	12/10/84	12/10/84	12/10/84	12/10/84	12/10/84	12/10/84	12/10/84
BENZENE	0	0	720	NO PEAKS	0			
CHLOROFORM	30			↓				
TRICHLOROETHYLENE	2.3	230	540	↓	13			
TRANS 1,2-DICHLOROETHYLENE	2.3	99	380	↓	2.4			
METHYLENE CHLORIDE	0	10	0	↓	14	130	273	38

ABOVE SAMPLES SHIPPED OUT ON 11 DEC 1984 BY FEDERAL EXPRESS.

RAW WAS TAKEN ON 13 DEC 1984, 14 DEC 1984

QUALITY CONTROL SAMPLES OF 602 WERE TAKEN ON 13 DEC 1984.



RAW WATER @ HADNOT POINT

SAMPLE DATE	12/13/84	12/14/84	ppb				12/18/84	12/19/84	DISTRIBUTION
			12/15/84	12/16/84	12/17/84	FC-540			
CHLOROFORM	10	11	10	4.3	3.1	4.2	4.6	9.4	
BROMODICHLOROMETHANE		6.1	5.5	4.4	2.5			5.4	
METHYLENE CHLORIDE	54								
CHLORO-DIBROMOMETHANE						3.0	24	5.4	
TCE								1.2	

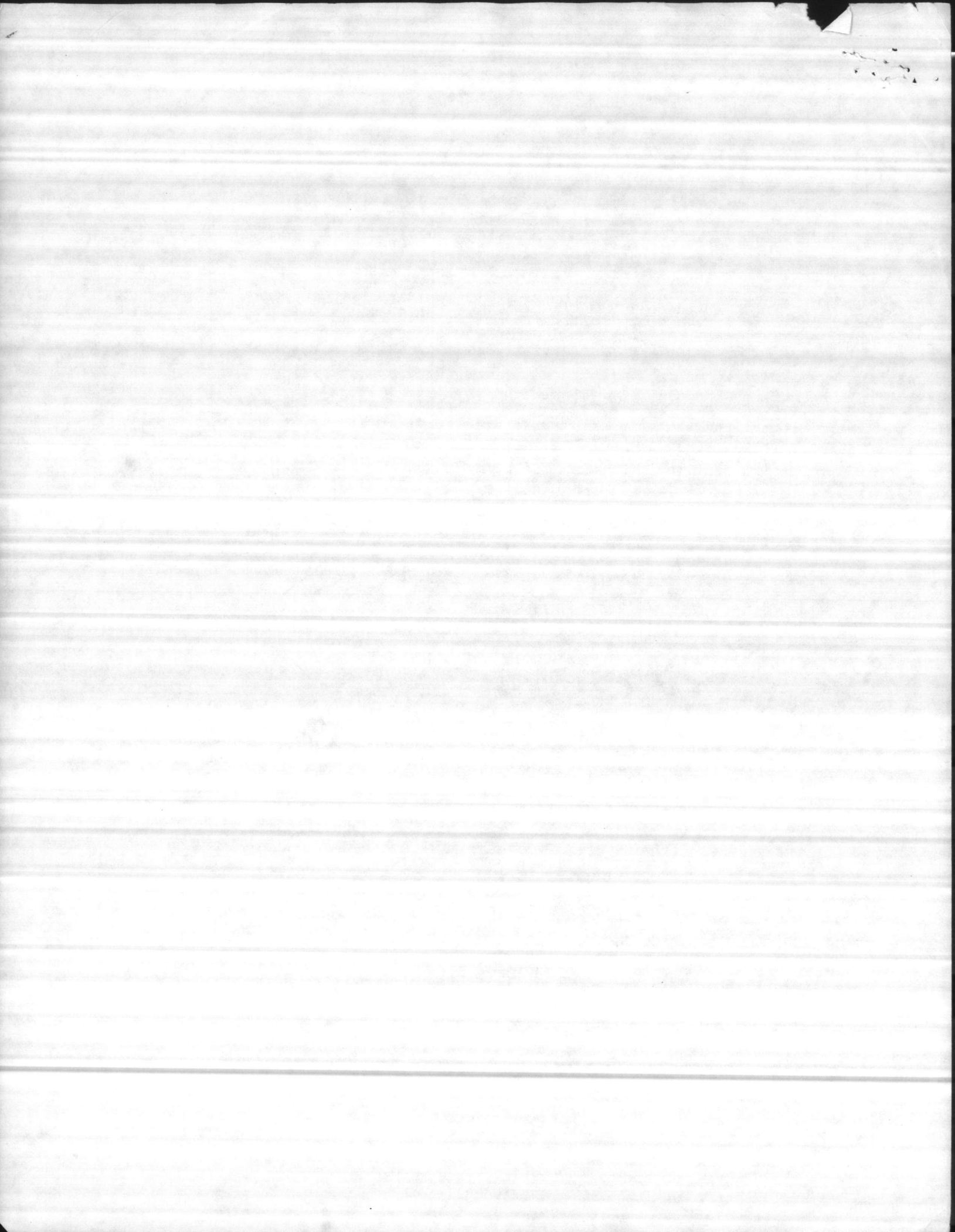
602 ON 12/13/84

□ TCE 340 ppb

TRANS 1,2-DICHLOROETHYLENE 230 ppb

BENZENE 230 ppb

TOLUENE 12 ppb



HADNOT POINT WATER TREATMENT PLANT

SAMPLE POINT	ppb						DETECTION LIMIT 10 ppb		
	RAW 12/4/84	TREATED 12/4/84	601 12/4/84	602 11/30/84	603 12/4/84	608 12/4/84	634 12/4/84	637 12/4/84	642 12/4/84
BENZENE	0	0	0	121	0	0	NO PEAKS	NO PEAKS	NO PEAKS
CHLOROFORM	10	16							
BROMODICHLOROMETHANE	6	10							
TRICHLOROETHYLENE	46	196	207	1600	4.6	110			
TRANS 1,2-DICHLOROETHYLENE	15	83	88	630		5.4			
1,1,2,2-TETRACHLOROETHANE	0	0		24					

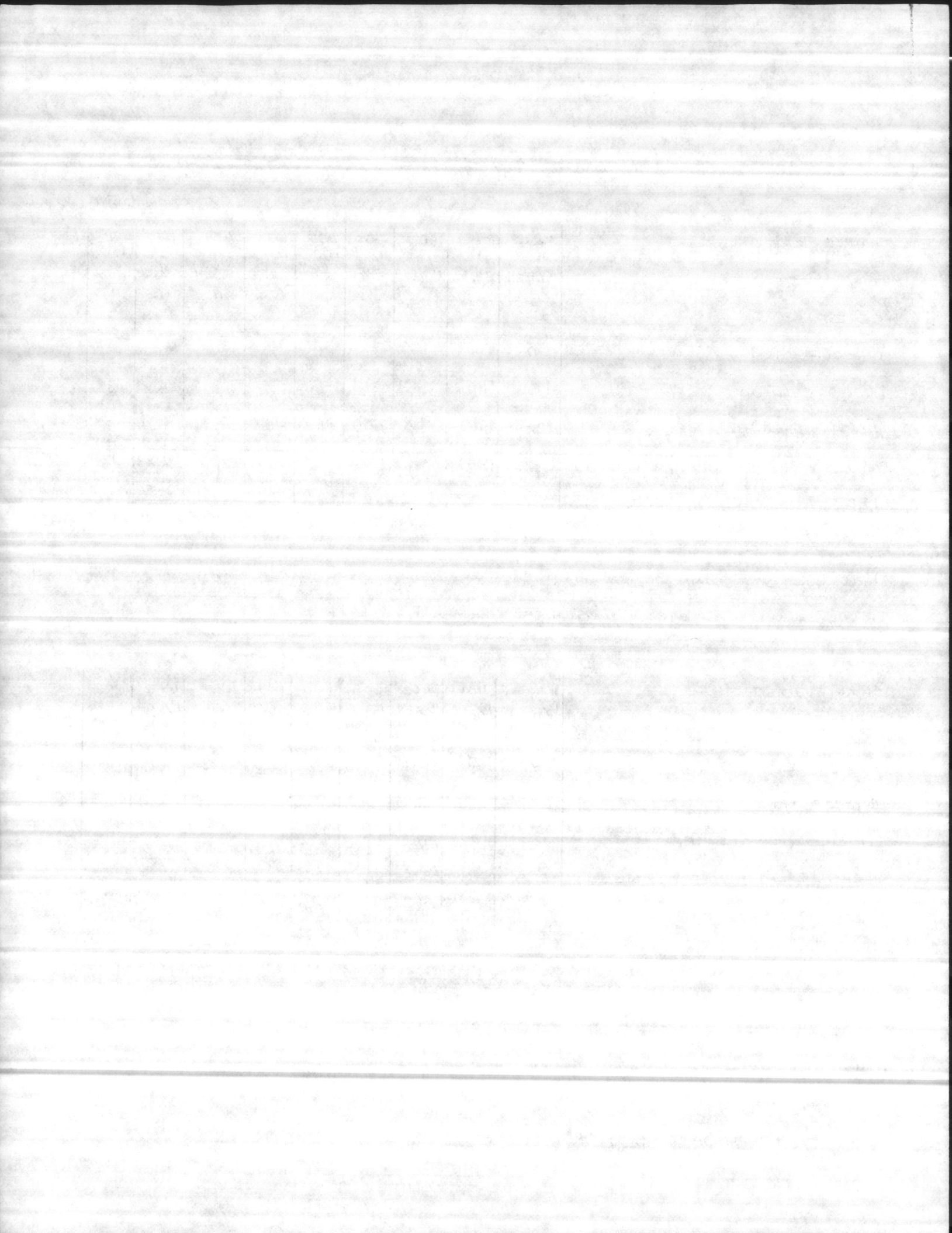
WELL 602 SHUT DOWN 30 NOV 1984. WELLS ~~601, 603~~ 601-608 SHUT DOWN ON 6 DEC 1984
 ABOVE SAMPLES SHIPPED OUT ON 4 DEC 1984 BY FEDERAL EXPRESS.

SAMPLE POINT	ppb							
	TREATED 12/10/84	601 12/10/84	602 12/10/84	603 12/10/84	608 12/10/84	634 12/10/84	637 12/10/84	642 12/10/84
BENZENE	0	0	720	NO PEAKS	0			
CHLOROFORM	30							
TRICHLOROETHYLENE	2.3	230	540		13			
TRANS 1,2-DICHLOROETHYLENE	2.3	99	380		2.4			
METHYLENE CHLORIDE	0	10	0		14	130	273	38

ABOVE SAMPLES SHIPPED OUT ON 11 DEC 1984 BY FEDERAL EXPRESS.

RAW WAS TAKEN ON: 13 DEC 1984, 14 DEC 1984

QUALITY CONTROL SAMPLES OF 602 WERE TAKEN ON 13 DEC 1984.



RAW WATER @ HADNOT POINT

SAMPLE DATE	12/13/84	12/14/84	12/15/84 ^{ppb}	12/16/84	12/17/84	12/18/84	12/19/84
CHLOROFORM	10	11	10	4.3	3.1		
BROMODICHLOROMETHANE		6.1	5.5	4.4	2.5		
METHYLENE CHLORIDE	54						

602 ON 12/13/84

* TCE 340 ppb

TRANS 1,2-DICHLOROETHYLENE 230 ppb

BENZENE 230 ppb

TOLUENE 12 ppb

