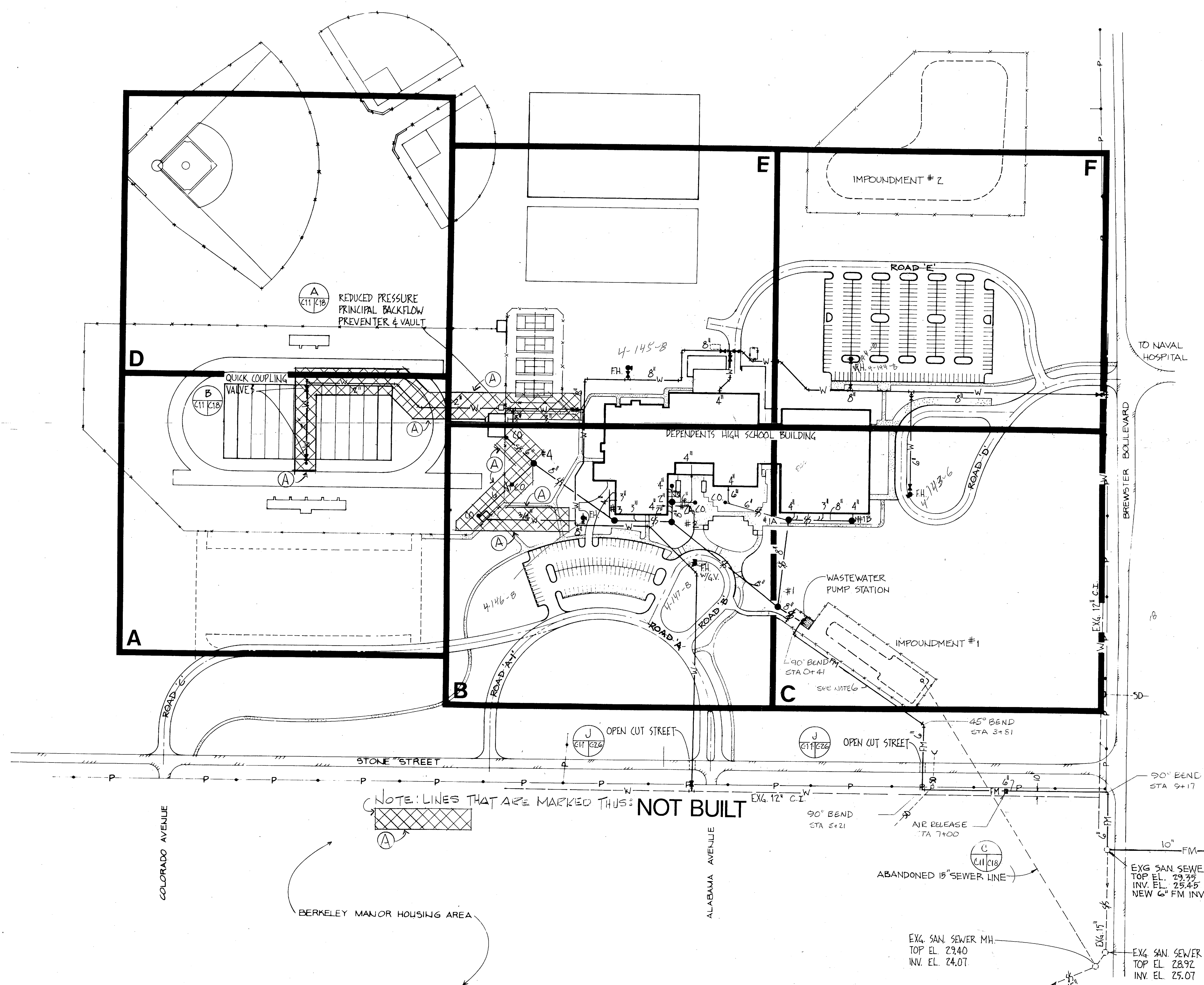


REVISIONS			
SYM	DESCRIPTION	DATE	APPROVED
(A)	REVISED AS-BUILT	10/2/91	[Signature]

SANITARY SEWER LAYOUT

STRUCTURE	COORDINATES	
	NORTH	SOUTH
M.H. #1	2611	1576.5
M.H. #1A	2635	1397
M.H. #1B	2770	1397
M.H. #2	2380.7	1401.7
M.H. #2A	2380.7	1362.7
M.H. #3	2261.3	1401.7
M.H. #4	2088.3	1277.2

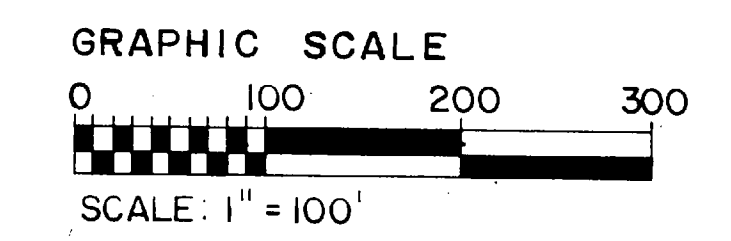


GENERAL NOTES:

- UTILITY CROSSINGS ARE INDICATED WITH A SOLID LINE PASSING THROUGH A BROKEN LINE. THE SOLID LINE REPRESENTS THE UTILITY ABOVE.
- A MINIMUM OF 1'-0" VERTICAL SEPARATION SHALL BE MAINTAINED WHERE UTILITIES CROSS UNLESS OTHERWISE INDICATED.
- MAINTAIN A MINIMUM VERTICAL SEPARATION OF 18" OR A MINIMUM HORIZONTAL SEPARATION OF 10' BETWEEN WATER AND SANITARY SEWER LINES.
- A MINIMUM OF 30" GROUND COVER SHALL BE MAINTAINED OVER WATER LINES AND SANITARY SEWER FORCE MAIN.
- SEE DETAILS OF WATER AND SEWER APPURTENANCES ON SHEET C-18.
- SEE SHEET C-20 FOR FORCE MAIN PROFILE.

9-7-91
 4-145-6 55/44/123.79
 4-145-8 58/42/1209
 146-8 57/36/1010
 127-7
 57-0
 55-200
 45-225
 36-815/1010
 209-333-6180

NOTE: LINES THAT ARE MARKED THUS **NOT BUILT**



RECORD DRAWING		C-11	
LETTER DATED 17 JULY 1990			
McKim & Creed Engineers Consultants and Planners Wilmington, North Carolina		DEPARTMENT OF THE NAVY NAVAL FACILITIES ENGINEERING COMMAND ATLANTIC DIVISION MARINE CORPS BASE, CAMP LEJEUNE, NORTH CAROLINA DEPENDENT HIGH SCHOOL GENERAL WATER & SEWER LAYOUT	
EFD DWG NO. 226772 JOB ORDER NO. 5F3412 STA. PROJ. NO. DES. JSJ DRAWN WDC, DEJ PROJ. MGR. HPM CH. ARCH/ENGR. WLR EFD, RVD, LJE, F.P. BR. MGR. LJE DES. DIR. [Signature]		NAVFAC DRAWING NO. 4126772 CONSTR. CONTR. NO. N62470-87-B-7107 SCALE: AS NOTED SPEC: 05-87-7107 SHEET 12 OF 200	

11 11
 RD RB
 SP SP
 TB TB
 AUDIT OVERLAY
 C-11
 DWG. NO.
 10/2/91

