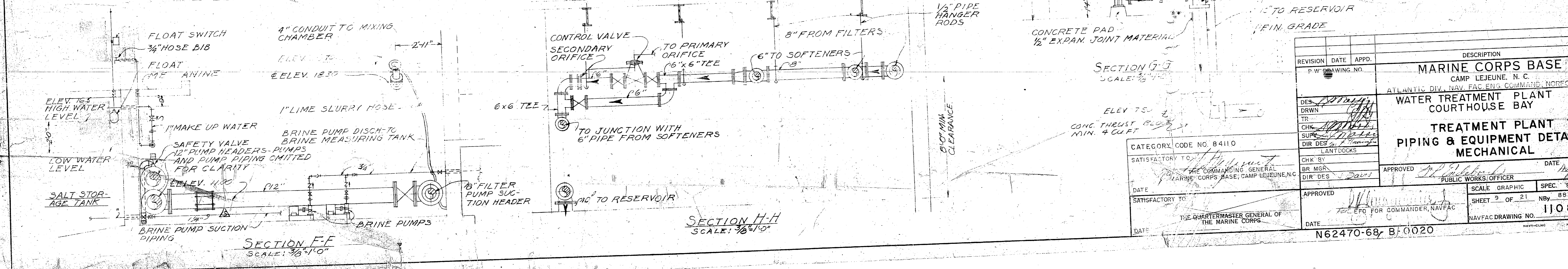
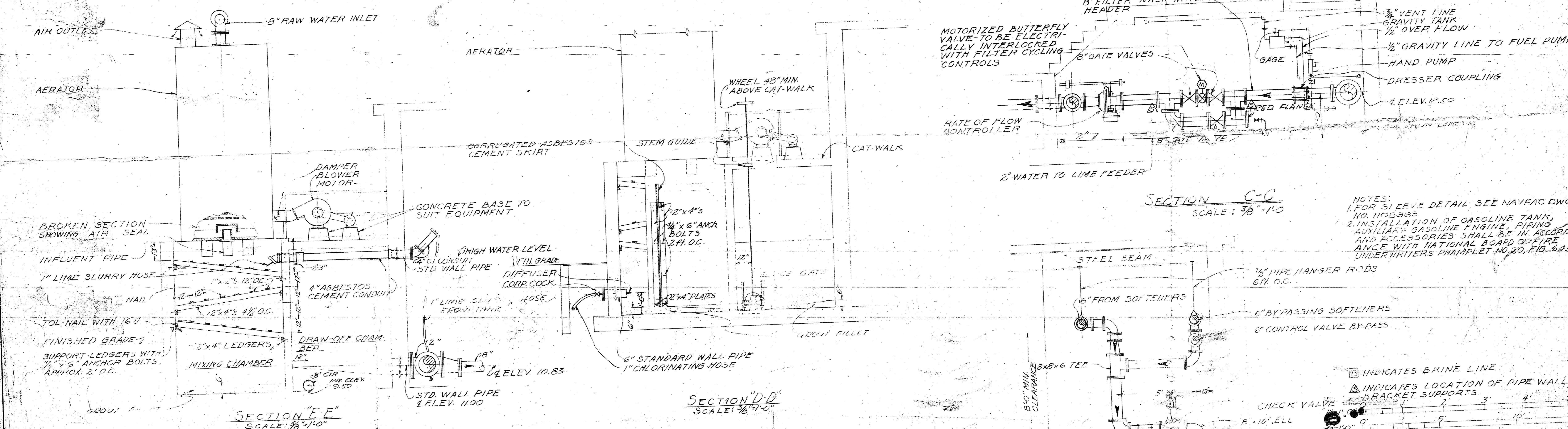
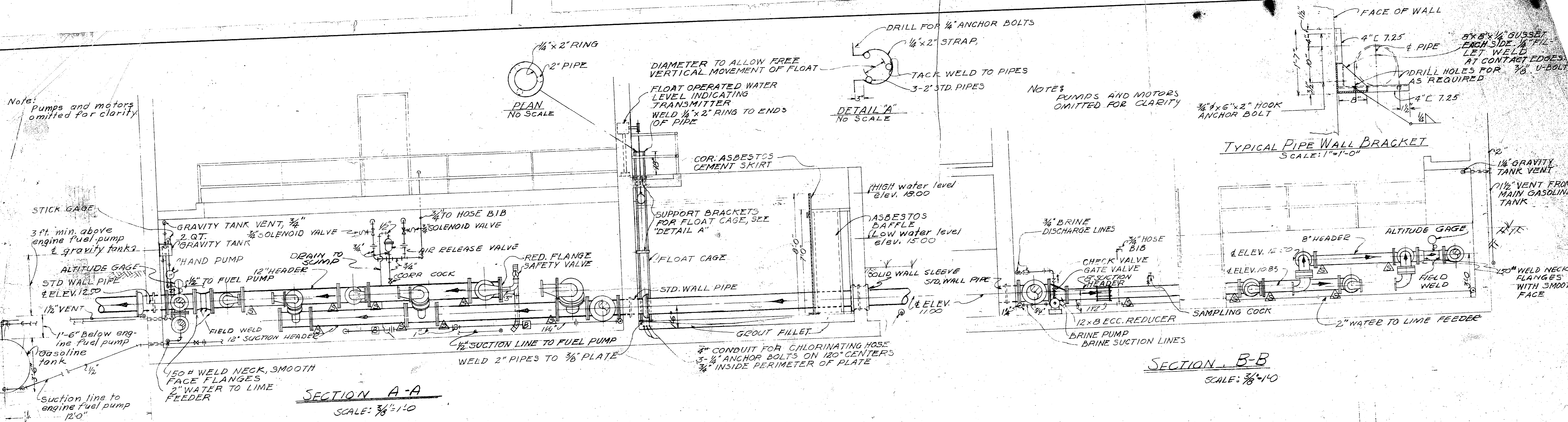


Note: Pumps and motors omitted for clarity

NOTE: PUMPS AND MOTORS OMITTED FOR CLARITY



NOTES:
1. FOR SLEEVE DETAIL SEE NAVFAC DWG. NO. 1102883
2. INSTALLATION OF GASOLINE TANK, AUXILIARY GASOLINE ENGINE, PIPING AND ACCESSORIES SHALL BE IN ACCORDANCE WITH NATIONAL BOARD OF FIRE UNDERWRITERS PHAMPHLET NO. 20, FIG. 6.4.5.

INDICATES BRINE LINE
INDICATES LOCATION OF PIPE WALL BRACKET SUPPORTS

REVISION	DATE	APPD.	DESCRIPTION	BY
1			MARINE CORPS BASE	
2			CAMP LEJEUNE, N. C.	
3			ATLANTIC DIV. NAVY FAC. ENG. COMMAND, NORFOLK VA	
4			WATER TREATMENT PLANT	
5			COURTHOUSE BAY	
6			TREATMENT PLANT	
7			PIPING & EQUIPMENT DETAILS	
8			MECHANICAL	

DESIGNER	DRWN	TR	CHK	SUPV	DIR DES	DATE
11/10/67	11/10/67	11/10/67	11/10/67	11/10/67	11/10/67	11/10/67
11/10/67	11/10/67	11/10/67	11/10/67	11/10/67	11/10/67	11/10/67
11/10/67	11/10/67	11/10/67	11/10/67	11/10/67	11/10/67	11/10/67
11/10/67	11/10/67	11/10/67	11/10/67	11/10/67	11/10/67	11/10/67
11/10/67	11/10/67	11/10/67	11/10/67	11/10/67	11/10/67	11/10/67
11/10/67	11/10/67	11/10/67	11/10/67	11/10/67	11/10/67	11/10/67
11/10/67	11/10/67	11/10/67	11/10/67	11/10/67	11/10/67	11/10/67
11/10/67	11/10/67	11/10/67	11/10/67	11/10/67	11/10/67	11/10/67
11/10/67	11/10/67	11/10/67	11/10/67	11/10/67	11/10/67	11/10/67

CATEGORY CODE NO. 84110
SATISFACTORY TO: THE QUARTERMASTER GENERAL OF THE MARINE CORPS
DATE: 11/10/67
N62470-68, B, 0020

63