

WESTMINSTER COMPANY  
TEMPERATURE CONTROL DEVIATION

UNACCOMPANIED ENLISTED PERSONNEL HOUSING  
MARINE CORPS BASE  
CAMP LEJEUNE, NORTH CAROLINA  
CONTRACT N62470-82-C-2244

ATLANTIC DIVISION  
NAVAL FACILITIES ENGINEERING COMMAND  
NORFOLK, VIRGINIA 23511

APPROVED ✓  
APPROVED AS NOTED \_\_\_\_\_  
DISAPPROVED \_\_\_\_\_

SUBJECT TO THE REQUIREMENTS OF  
CONTRACT NO. **05-82-2244**

APPROVAL OF A SUBMITTAL DOES NOT INCLUDE  
APPROVAL OF ANY DEVIATION FROM THE CON-  
TRACT REQUIREMENTS UNLESS THE CONTRAC-  
TOR CALLS ATTENTION TO AND SUPPORTS THE  
DEVIATION--THE CONTRACTOR SHALL BE  
RESPONSIBLE FOR PROVIDING PROPE  
PHYSICAL DIMENSIONS & WEIGHTS, COORDINA-  
TION OF TRADES, ETC., AS REQUIRED.

REVIEWER RIA DATE **12 MAR 1985**

FOR OFFICER IN CHARGE OF CONSTRUCTION

"It is hereby certified that the (material) (equipment) shown and  
marked \_\_\_\_\_, shop drawings, catalog cut(s), \_\_\_\_\_, and  
approved \_\_\_\_\_ incorporated into Contract  
Number NO2470-82-C-2244, is in compliance with the contract  
drawings \_\_\_\_\_, and can be installed in the \_\_\_\_\_  
space and is \_\_\_\_\_ for use ✓ submitted for Government  
approval.

Authorized \_\_\_\_\_ Date 2/6/85

Signature CQC Rep [Signature] Date 2/6/85"





December 10, 1984

Ramesy Air Conditioning Company  
P. O. Box 1333  
Jacksonville, North Carolina

Attn: Mr. Kurney Ramsey

Re: U.E.P.H. - Camp Lejeune  
Contract # 2244

Dear Mr. Ramsey,

After further evaluation and discussion related to monitoring of TAB unit operation, a deviation is proposed.

Note that our initial submittal, which has been returned included temperature transmitters to indicate selected room conditions, similar to the humidity signal transmission. This was for indication of a single point per AHU.

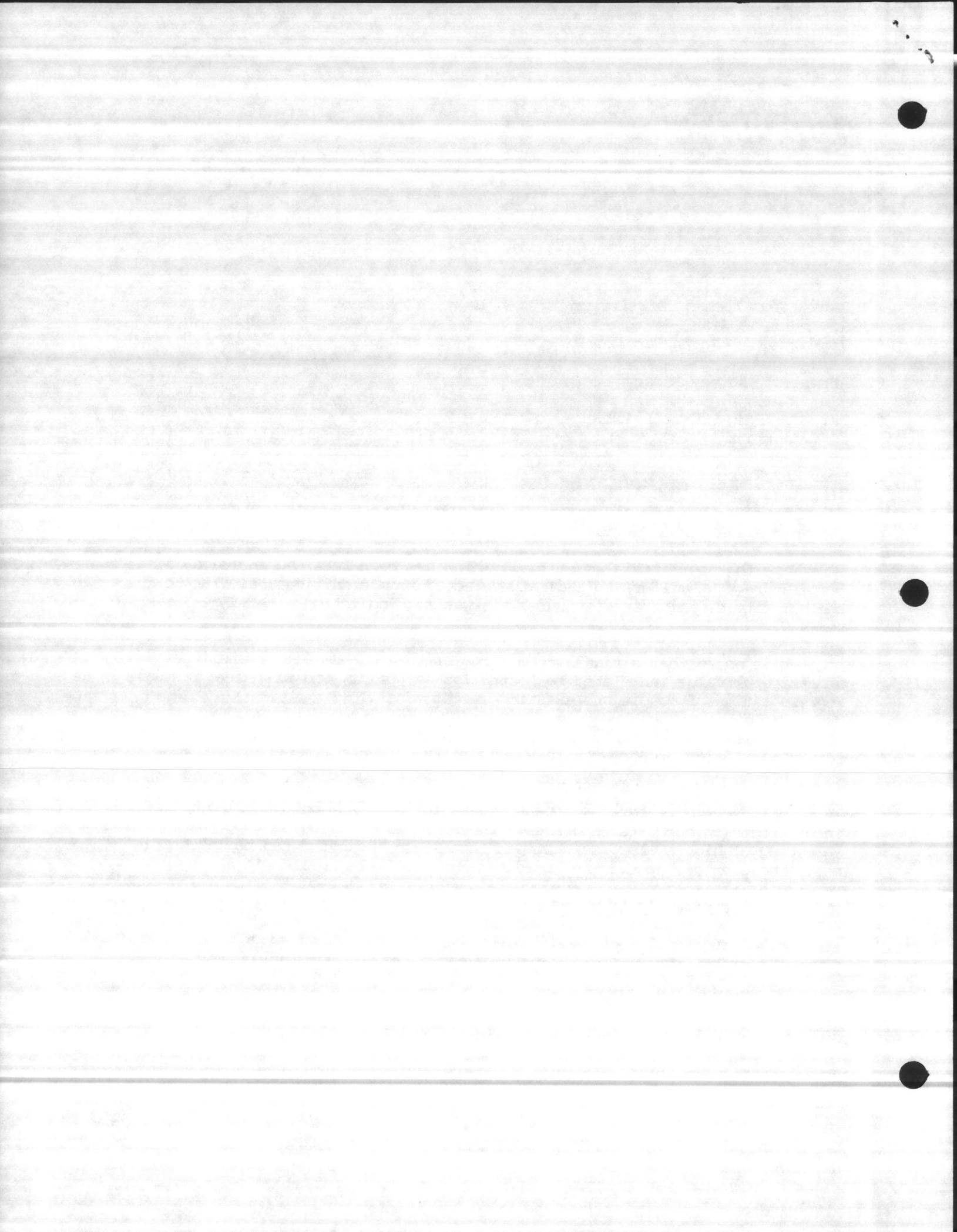
It is noted that a signal from a temperature or humidity transmitter is a meaningful value, unrelated to controller set point, and will give factual representation of conditions existing in the zones.

After discussion, we conclude and propose what we feel to be best to permit monitoring of temperature and humidity conditions.

Revised diagrams are attached with data on instruments for this proposal. This includes two temperature transmitters for each AHU on each floor, located in end rooms on opposite exposures. These signals will be sent to the DTC without selecting of high or low, so that each condition indicated can be indentified as to location of input. The humidity signal will be located in a single room per AHU as it is likely to be adequately representative of the resulting conditions which are not directly being controlled.

This change will require different implementation and we propose using wall mounted current transmitters to relieve panel and wiring problems etc.

This deviation is proposed as a no cost change. While there are 60 temperature transmitters involved, there will be less signal selectors and some question of cost of wiring versus tubing as implied.



**Barber-Colman Company**

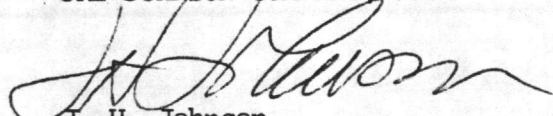
December 10, 1984  
Page 2 of 2

In conclusion we feel that this will permit control of TAB units without a problem of interaction with problems of selectors and associated leaks and other maintenance problems. It likewise permits indication to be independent of control and assures any false signals due to numerous variables from a single controller.

If there are further questions we will be happy to discuss in more detail.

Yours truly,

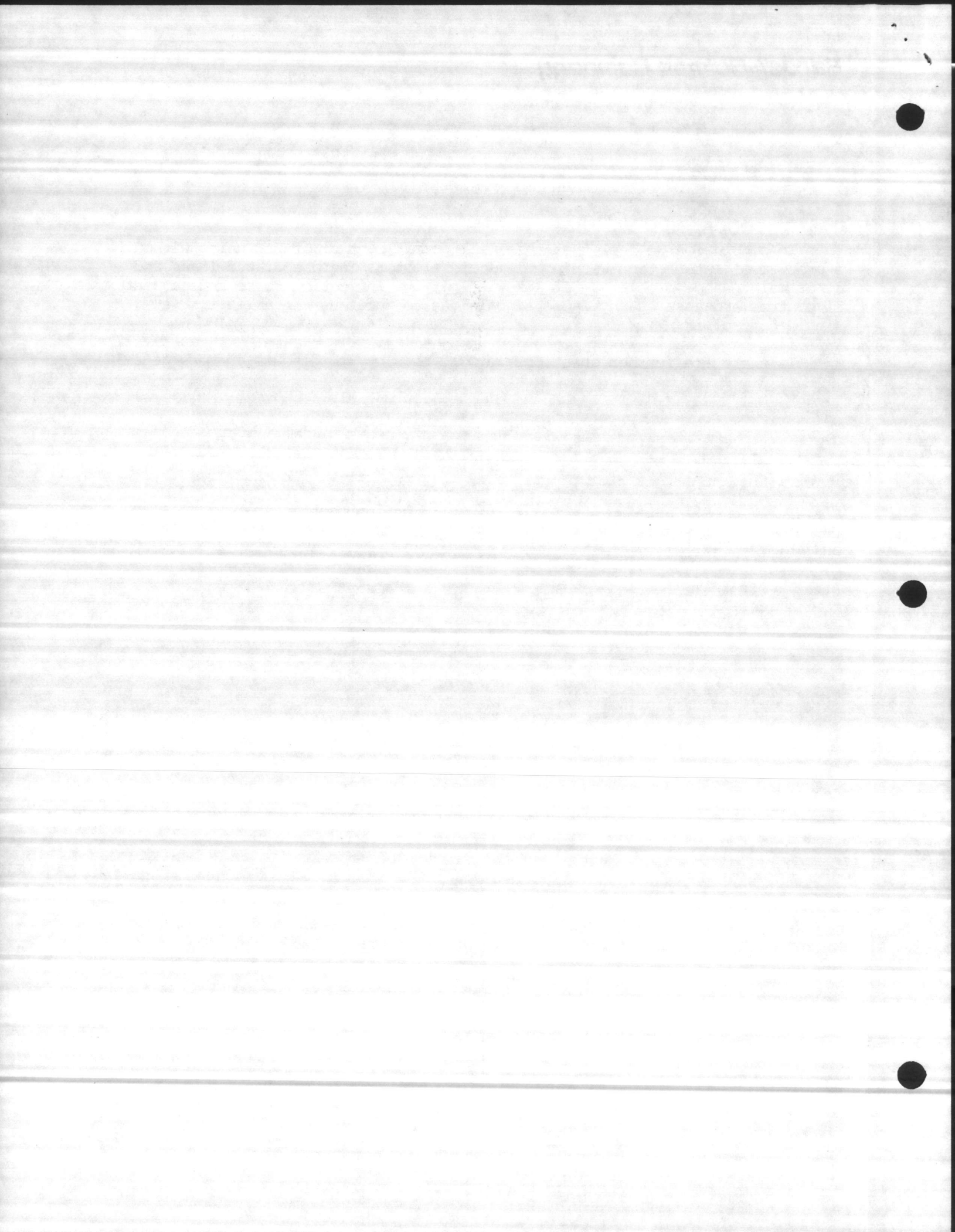
JAY JOHNSON COMPANY, INC.



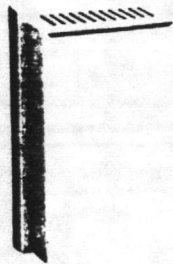
J. H. Johnson

JHJ/mh

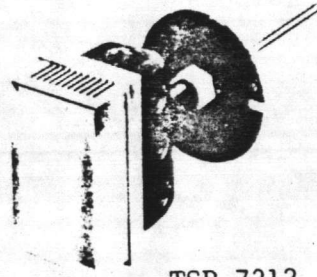
Attachments



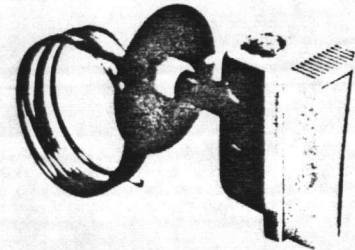
# TSP-7000 SERIES TEMPERATURE TRANSMITTERS



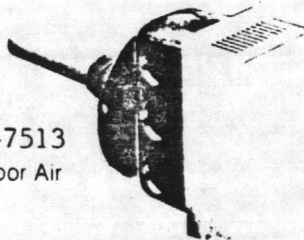
TSP-7111  
Room



TSP-7212  
Chilled Water  
Immersion



TSP-7414-005  
5 Foot Duct Averaging



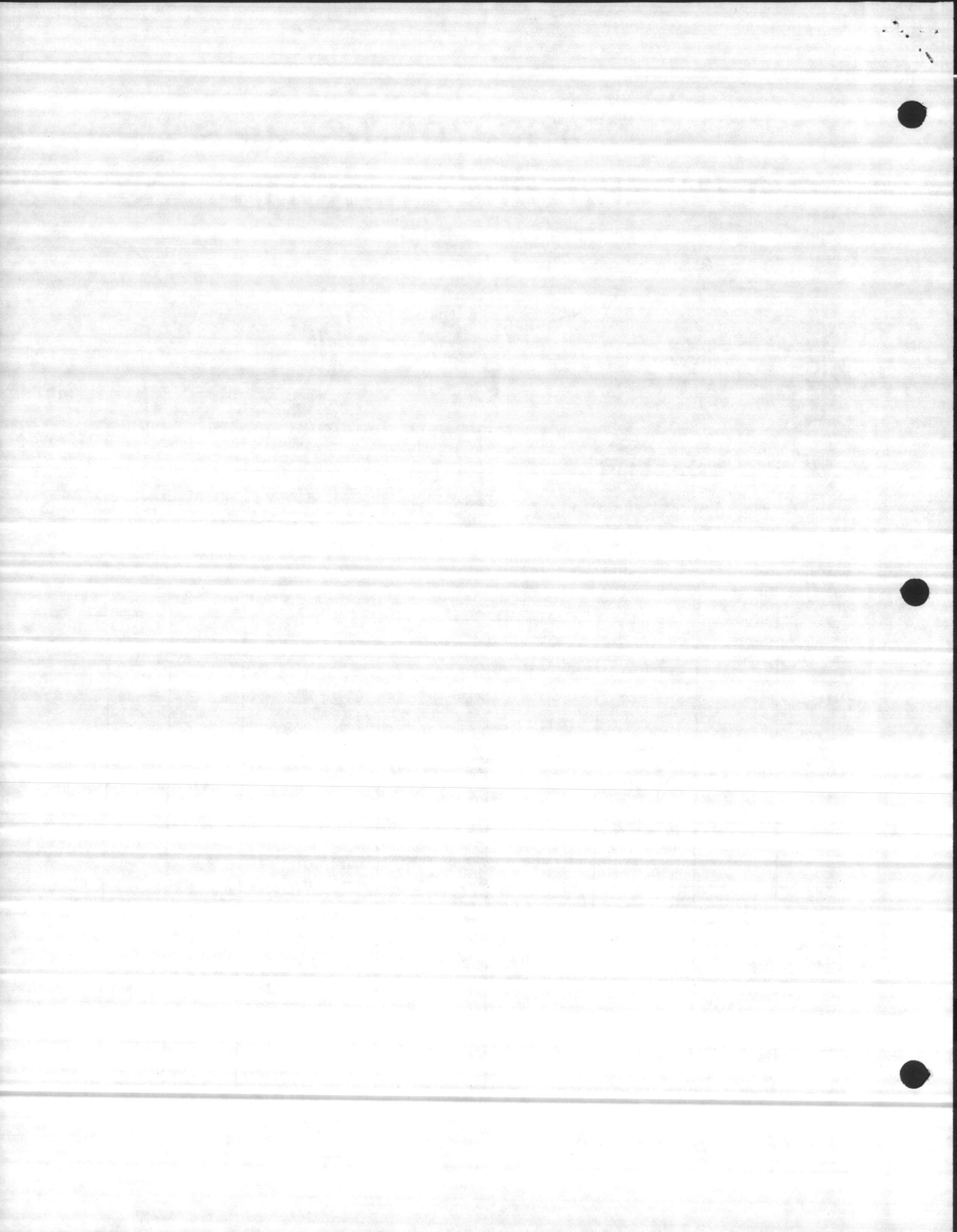
TSP-7513  
Outdoor Air

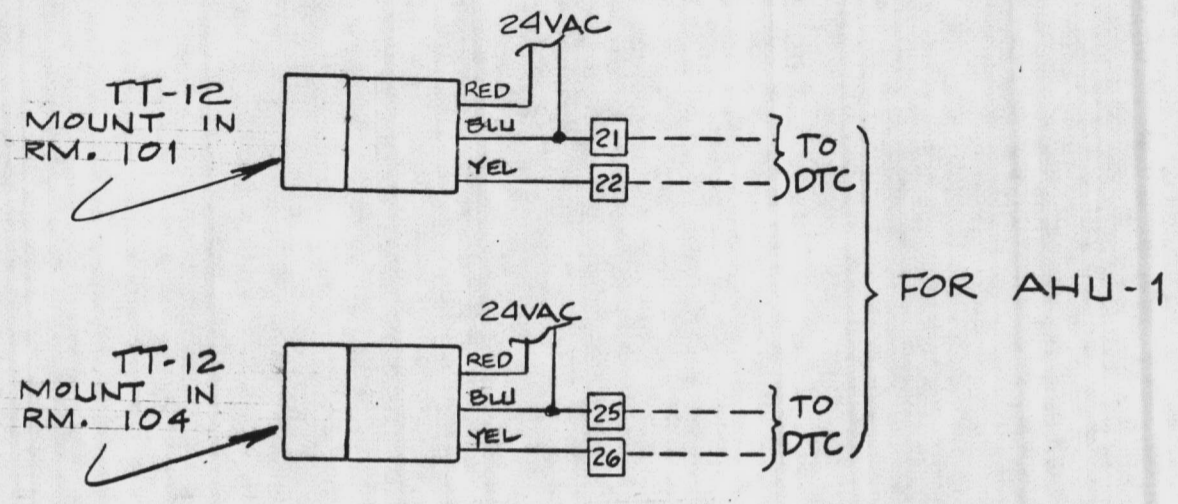
TSP-7214  
Duct/Immersion

TSP-7414-022  
22 Foot Duct Averaging

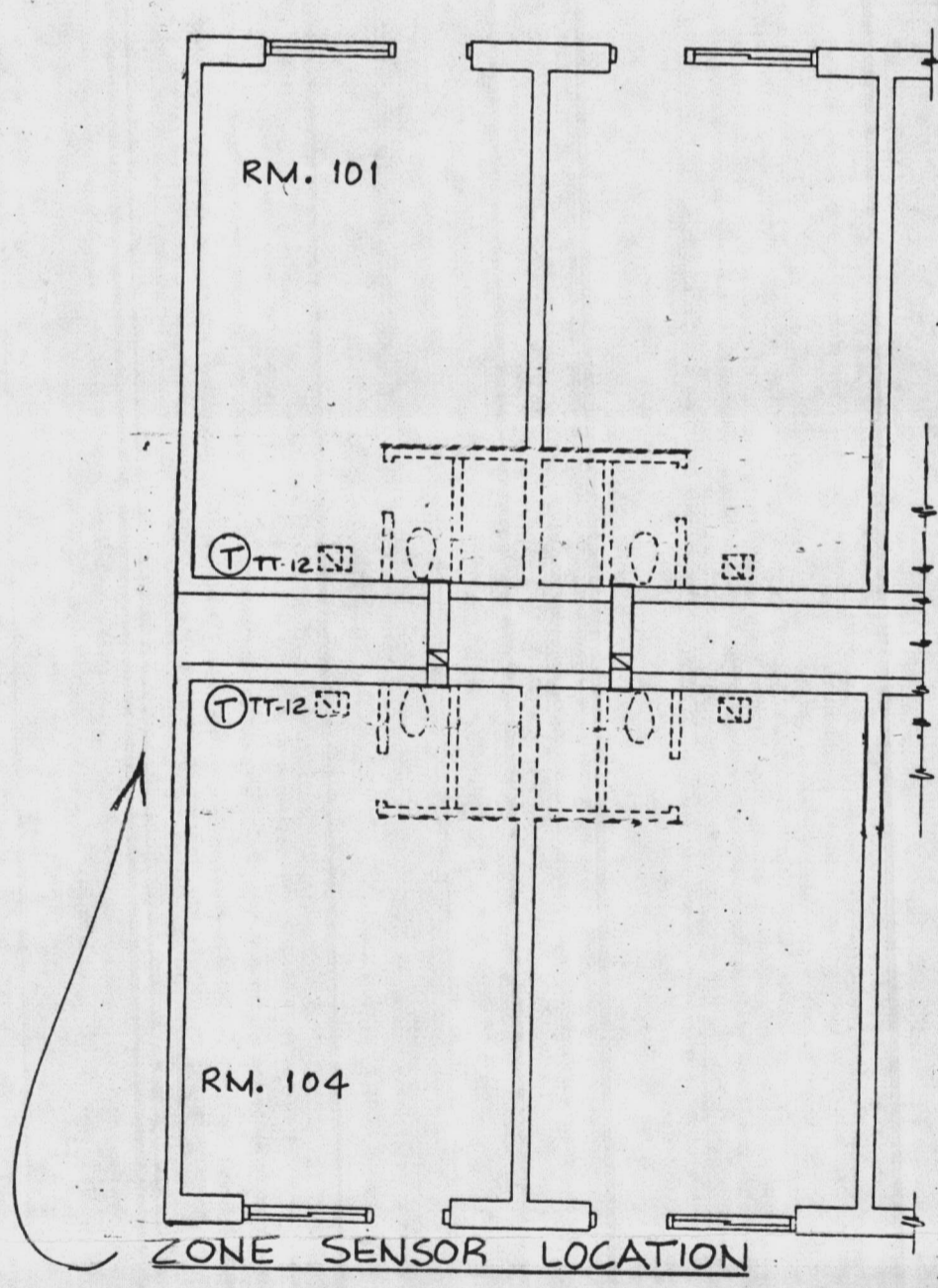
PART NO.	MODEL	RANGE (F)	ACCURACY (F)		OUTPUT CHARACTERISTICS (VDC)	POWER REQ'D	AMBIENT CHARACTERISTIC	
			TOTAL RANGE	LIMITED RANGE			°F	% R.H.
TSP-7111	Room	50 to 100	±1% (±½F) of Range	65 to 85 ±.6% (±.3F) of range	1 to 11 (yellow lead) with 3K ohms minimum load impedance  AND/OR  .45 to 5.0 (yellow/black lead) with 100K ohms minimum load impedance	24 VDC ± 15%	50-100	5 to 95
TSP-7212	Chilled Water Immersion	30 to 80		45 to 65 ±.6% (±.3F)				
TSP-7513	Outdoor	-40 to 160	±1½% (±3F) of range	0 to 120 ±.8% (±1.6F) of range	15 MA	40° to 135		
TSP-7214	Duct/Immersion							
TSP-7414-005	5 Foot Duct Averaging	40 to 240	±1½% (±3F) of range	80 to 200 ±.8% (±1.6F) of range				
TSP-7414-022	22 Foot Duct Averaging							







ZONE SENSOR WIRING  
 (TYPICAL FOR EACH OF 6 AHUS)  
 TT-12 POWERED FROM LOCAL AHU PANEL



DEVIATION FOR TAB MONITORING CONTROL

JOB NAME: UEPH  
 E-927  
 12-10-84

