

POSITION OF JOB DESCRIPTION

NAVSO 12510/7 (REV. 10-67)
(See Instructions on Reverse)

3
Shop Copy
[] PD [X] JD NO. 126-74

OFFICIAL CLASSIFICATION OR RATING ACTION	1. THIRD ACTION	SCHED. OR SERV.	SERIES	GRADE/PAY LEVEL /FORMULA	CLASSIFIERS INITIALS	CLASSIFICATION OR RATING OFFICIAL (Signature, Title and Date)
	2. SECOND ACTION					
	3. FIRST ACTION					
	Electrician (High Voltage)	WG	2810	8	DB	W. R. MARTIN By direction 26 Aug 74

4. RECOMMENDED	5. NAME OF EMPLOYEE	
POSITION OR JOB LOCATION		
6. ACTIVITY - NAME AND LOCATION Marine Corps Base, Camp Lejeune, N. C.		9. (3rd) General Trades Branch
7. ORGANIZATIONAL SUBDIVISIONS (1st) Base Maintenance Department		10. (4th) Electric Section
8. (2nd) Maintenance and Repair Division		11. ORGANIZATIONAL TITLE OF POSITION OR JOB (If any) Electrical Distribution Unit
12. EMPLOYEES NOW PERFORMING DUTIES (Ungraded jobs only)		
(No. :)	(Title:)	(No. :)

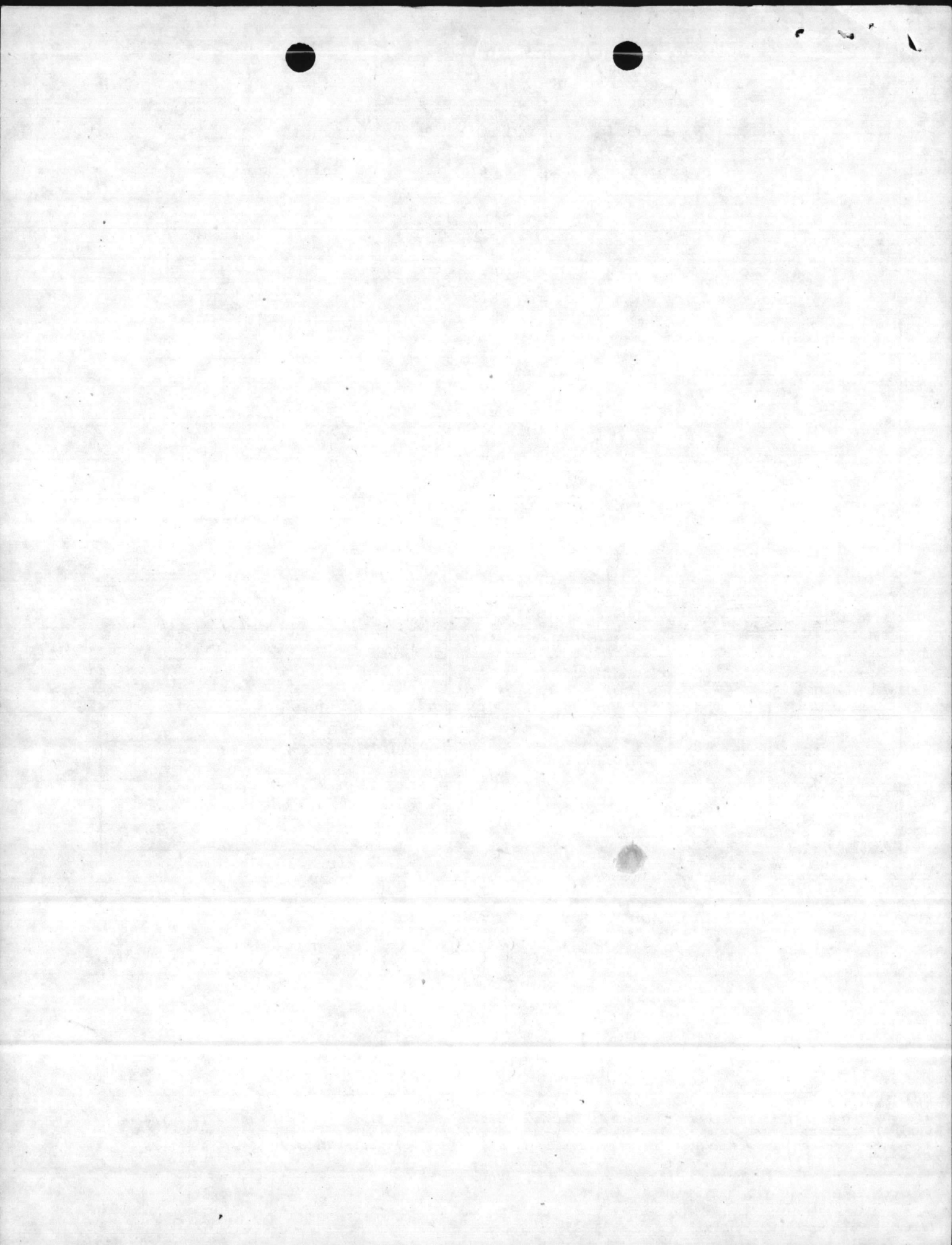
REASON FOR SUBMISSION			CERTIFICATIONS:	
<input checked="" type="checkbox"/> 13. DUTIES AND RESPONSIBILITIES NOT ELSEWHERE DESCRIBED - COMPLETE DESCRIPTION ATTACHED.			The description of the duties and responsibilities of this position or job is complete and accurate.	
14. ATTACHED AMENDMENT NO.	POS. OR JOB #	CLASS. OR RATING	19. SIGNATURE (Employee)	DATE
TO-				
15. IDENTICAL TO-			20. SIGNATURE AND TITLE (Immediate supervisor)	DATE
16. ATTACHED STATEMENT OF DIFFERENCE TO-			ELIJAH WILSON Electrician Lineman Foreman (Position No., Classification or Rank)	
17. REPLACES-			21. SIGNATURE AND TITLE (Person authorized to establish position or job)	DATE
18. OTHER (Specify)			W. F. MILLER Program Manager, GS-13	

22. REMARKS

The classification of this position may be appealed by the incumbent at any time. Appeals from classification actions which result in demotion or reduction in compensation must be timely in order for retroactivity to apply. Consult your classifier or appropriate activity instruction for procedures. Civil Service Commission classification standards and Department of the Navy classification guides are available for review in the Wage and Classification Office.

Green
Trainer J.D.

23. CLASSIFICATION OR RATING RECERTIFICATION:				
---	--	--	--	--



I. INTRODUCTION

This position is located in the Electrical Distribution Unit, Electrical Section, General Trades Branch, Maintenance and Repair Division, Base Maintenance Department, Marine Corps Base, Camp Lejeune, North Carolina. The primary purpose of this position is the development of sufficient skill and knowledge of the Electrician (High Voltage) Trade to advance to the Journeyman Level.

II. MAJOR DUTIES

Working with an electrical team or crew, the incumbent installs, modifies, connects, inspects, troubleshoots and repairs overhead and underground electrical distribution systems consisting of lines, poles, sub-stations, switch-gear and other related equipment. This position includes the performance of Journeyman Level duties under close supervision.

III. SKILLS AND KNOWLEDGE

Incumbent must possess knowledge of how and where controls and wiring are installed and operated. Must be familiar with high voltage components and have the ability to perform common tasks, such as setting and framing poles, fusing switches, replacing cross-arms, switches, insulators, arrestors, braces and related components. He must be able to splice cables, insulate and serve joints using tape, compounds, sleeves, scotch cast or other resin sealing substances. Strings and sags wire, installs guys and anchors, uses hot sticks, blankets, gloves and other related equipment. Works from buckets and platforms, climbs poles using climbing gear. Must possess knowledge of basic electrical theory, such as Ohms Law and series and parallel circuits in order to understand instructions and assignments. Must be familiar with and able to use Ohm Meters, Volt Meters and Meggers to locate open circuits, high resistance and potential faults. Must have the ability to locate and repair minor or commonly encountered problems on energized lines to 12.47 KW and to interpret sketches, diagrams and drawings of distribution systems and inter-connections of equipment. Must be able to work safely under hazardous conditions, as in high voltage areas or in cramped or high positions.

IV. RESPONSIBILITY

Incumbent receives instructions from supervisor or a higher grade employee. Usually a supervisor, or higher grade employee is available for advice during work progress. Work is subject to spot checks, while in progress, and upon completion.

V. PHYSICAL EFFORTS

Incumbent performs moderate to heavy lifting, pulling and carrying of equipment and material. He climbs ladders and poles. Works in awkward and strained positions, sometimes for extended periods. Coordination of hands, eyes, legs and body is required to perform assignments safely.

VI. WORKING CONDITIONS

The incumbent works above ground, on poles, as well as below ground, in manholes and vaults. He is exposed to danger from explosion of equipment and cables as well as danger from high voltage electrical shock, burns, broken bones, cuts and bruises. Works outside most of the time, subject to extremes of weather conditions.

VII. EXPLANATORY STATEMENT

Must have, or be able to obtain, both a State and Government's driver's license.

