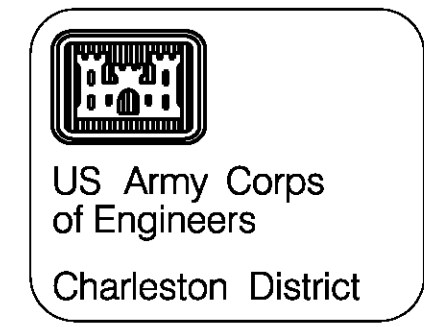


- NOTES:**
- SOUNDINGS ARE IN FEET AND TENTHS AND REFER TO MEAN LOWER LOW WATER.
 - HORIZONTAL DATUM IS SC STATE PLANE COORDINATES NAD 1983.
 - THE SOUNDINGS ON THIS DRAWING ONLY INDICATE THE GENERAL CONDITION OF THE CHANNEL ON THE DATE OF SURVEY.
 - DATE OF SURVEY: 19 NOV. 2012 CONDITION



DATE	APPROVED BY	DESCRIPTION
19 NOV 2012	NO. 1	Issue Book Description 1
19 NOV 2012	NO. 2	Issue Book Description 2
19 NOV 2012	NO. 3	Issue Book Description 3
19 NOV 2012	NO. 4	Issue Book Description 4
19 NOV 2012	NO. 5	Issue Book Description 5
19 NOV 2012	NO. 6	Issue Book Description 6
19 NOV 2012	NO. 7	Issue Book Description 7
19 NOV 2012	NO. 8	Issue Book Description 8
19 NOV 2012	NO. 9	Issue Book Description 9
19 NOV 2012	NO. 10	Issue Book Description 10
19 NOV 2012	NO. 11	Issue Book Description 11
19 NOV 2012	NO. 12	Issue Book Description 12
19 NOV 2012	NO. 13	Issue Book Description 13
19 NOV 2012	NO. 14	Issue Book Description 14
19 NOV 2012	NO. 15	Issue Book Description 15
19 NOV 2012	NO. 16	Issue Book Description 16
19 NOV 2012	NO. 17	Issue Book Description 17
19 NOV 2012	NO. 18	Issue Book Description 18
19 NOV 2012	NO. 19	Issue Book Description 19
19 NOV 2012	NO. 20	Issue Book Description 20

**U.S. ARMY ENGINEER DISTRICT
CORPS OF ENGINEERS
CHARLESTON, SOUTH CAROLINA**

DATE: DEC 012
DRAWING NO: 9459

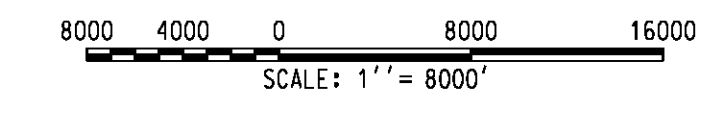
DESIGNED BY: MERV
CHECKED BY: MERV
DRAWING CODE:
FOR SCALE: 1" = 800'
PLOT SCALE: 1" = 800'

JEREMY CREEK
CONDITION SURVEY
9459
CHARLESTON COUNTIES SOUTH CAROLINA

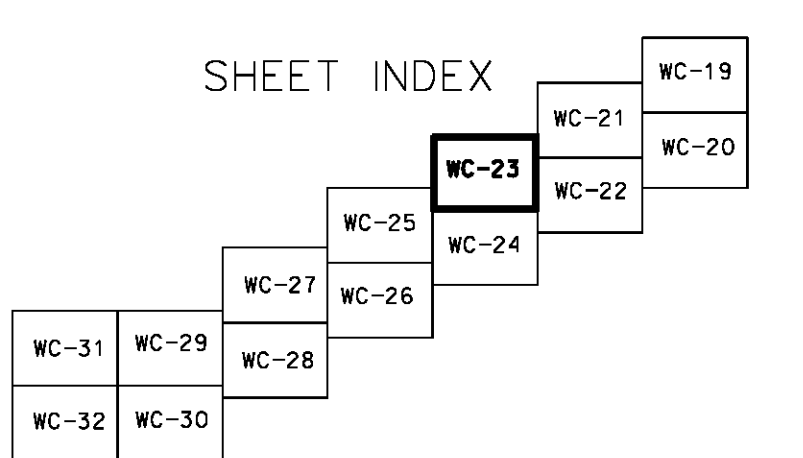
Submitted by: _____
Chief, Navigation Section

Approval Recommended: _____
Chief, Construction-Operations Branch

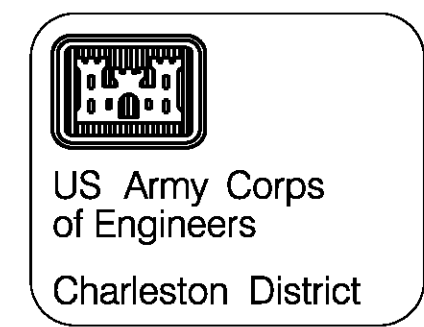
Approved by: _____
Chief, Technical Services Division



PT. NO.	STATION W/OFFSET	COORDINATES	
		EAST (X)	NORTHING (Y)
532+00N	300L	2,474,999.66	457,314.86
516+00N	300L	2,473,441.32	456,953.34
502+00N	300L	2,472,077.81	456,637.11
502+00N	300R	2,472,213.32	456,052.71
496+20.39N	320L	2,471,458.42	456,514.05
496+20.39N	340R	2,471,711.24	455,895.20
485+00N	320L	2,470,458.79	455,904.13
3+00	185L	2,471,823.07	455,939.26
2+98.49	190L	2,471,468.29	456,511.05
2+98.49	210L	2,471,448.56	456,507.98
12+68.19	210L	2,471,305.08	457,427.76
12+68.19	190L	2,471,324.29	457,434.51
14+55.27	210L	2,471,250.06	457,523.64
14+55.27	190L	2,471,265.62	457,536.73
23+20.22	190L	2,470,661.60	458,041.08
28+68.22	190L	2,470,204.79	458,160.61
28+68.22	160L	2,470,207.08	458,191.11
33+76.72	190L	2,469,666.69	458,094.47
33+76.72	160L	2,469,674.24	458,125.50
37+26.72	190L	2,469,278.52	458,349.49
37+26.72	160L	2,469,309.25	458,371.03
40+20	190L	2,469,100.95	458,622.26
40+20	160L	2,469,125.67	458,639.29



LEGEND	
BUILDING	[Symbol]
FENCE	[Symbol]
GUARD RAIL	[Symbol]
TREE LINE	[Symbol]
INDIVIDUAL TREE	[Symbol]
POWER POLE	[Symbol]
LIGHT POLE	[Symbol]
WATER	[Symbol]
WALL	[Symbol]
RETAINING WALL	[Symbol]
SHRUB	[Symbol]
BRUSH-MARSH LINE	[Symbol]
POST	[Symbol]
PAVED ROAD	[Symbol]
UNPAVED ROAD	[Symbol]
NAVAID GREEN	[Symbol]
NAVAID RED	[Symbol]
H&V CONTROL	[Symbol]
U S HIGHWAY	[Symbol]
STATE HIGHWAY	[Symbol]
ROAD NUMBER	[Symbol]
ANCHORAGE	[Symbol]
WRECK	[Symbol]
MONUMENT	[Symbol]



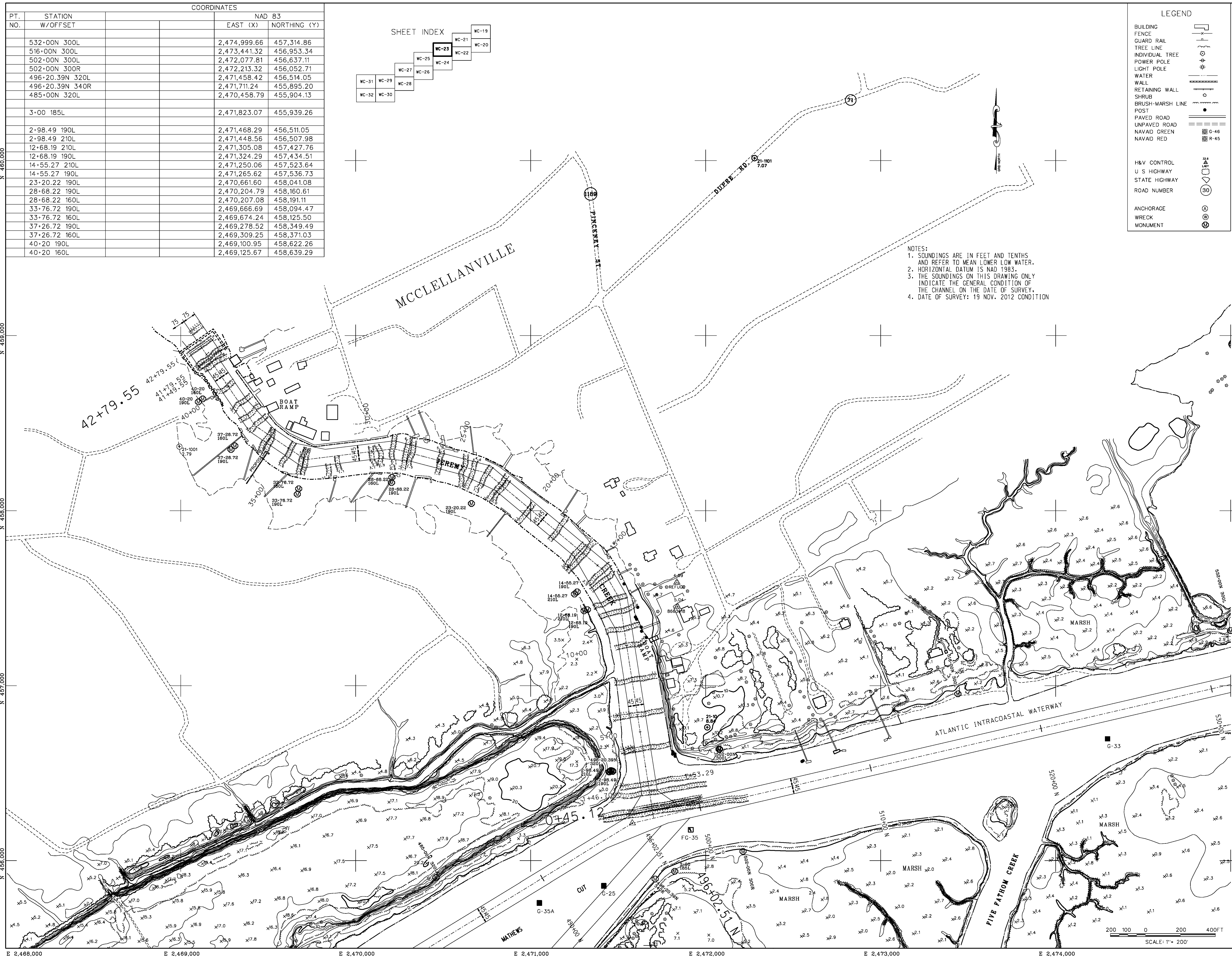
DATE	BY	DESCRIPTION
11/19/12	APR 9	Issue Block Description 9
11/19/12	APR 10	Issue Block Description 10
11/19/12	APR 11	Issue Block Description 11
11/19/12	APR 12	Issue Block Description 12
11/19/12	APR 13	Issue Block Description 13
11/19/12	APR 14	Issue Block Description 14
11/19/12	APR 15	Issue Block Description 15
11/19/12	APR 16	Issue Block Description 16
11/19/12	APR 17	Issue Block Description 17
11/19/12	APR 18	Issue Block Description 18
11/19/12	APR 19	Issue Block Description 19

DATE	DESCRIPTION
11/19/12	Issue Block Description 1
11/19/12	Issue Block Description 2
11/19/12	Issue Block Description 3
11/19/12	Issue Block Description 4
11/19/12	Issue Block Description 5
11/19/12	Issue Block Description 6
11/19/12	Issue Block Description 7
11/19/12	Issue Block Description 8

U.S. ARMY ENGINEER DISTRICT
CORPS OF ENGINEERS
CHARLESTON, SOUTH CAROLINA

ATLANTIC INTRACOASTAL WATERWAY
JEREMY CREEK CONDITION
9459
GEORGETOWN AND CHARLESTON COUNTIES

SHEET 2 OF 2



NOTES:
1. SOUNDINGS ARE IN FEET AND TENTHS AND REFER TO MEAN LOWER LOW WATER.
2. HORIZONTAL DATUM IS NAD 1983.
3. THE SOUNDINGS ON THIS DRAWING ONLY INDICATE THE GENERAL CONDITION OF THE CHANNEL ON THE DATE OF SURVEY.
4. DATE OF SURVEY: 19 NOV. 2012 CONDITION

E 2,468,000 E 2,469,000 E 2,470,000 E 2,471,000 E 2,472,000 E 2,473,000 E 2,474,000