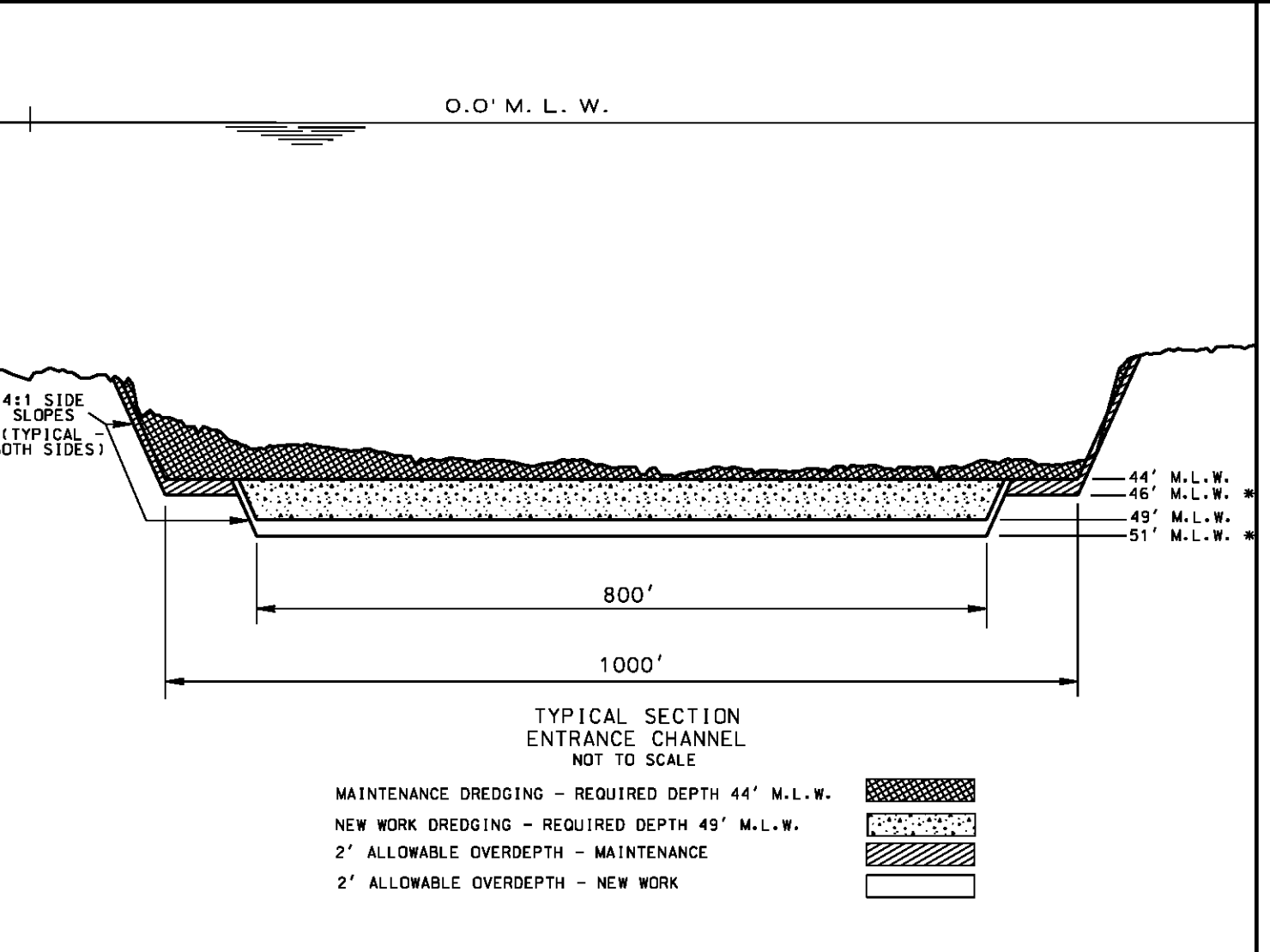
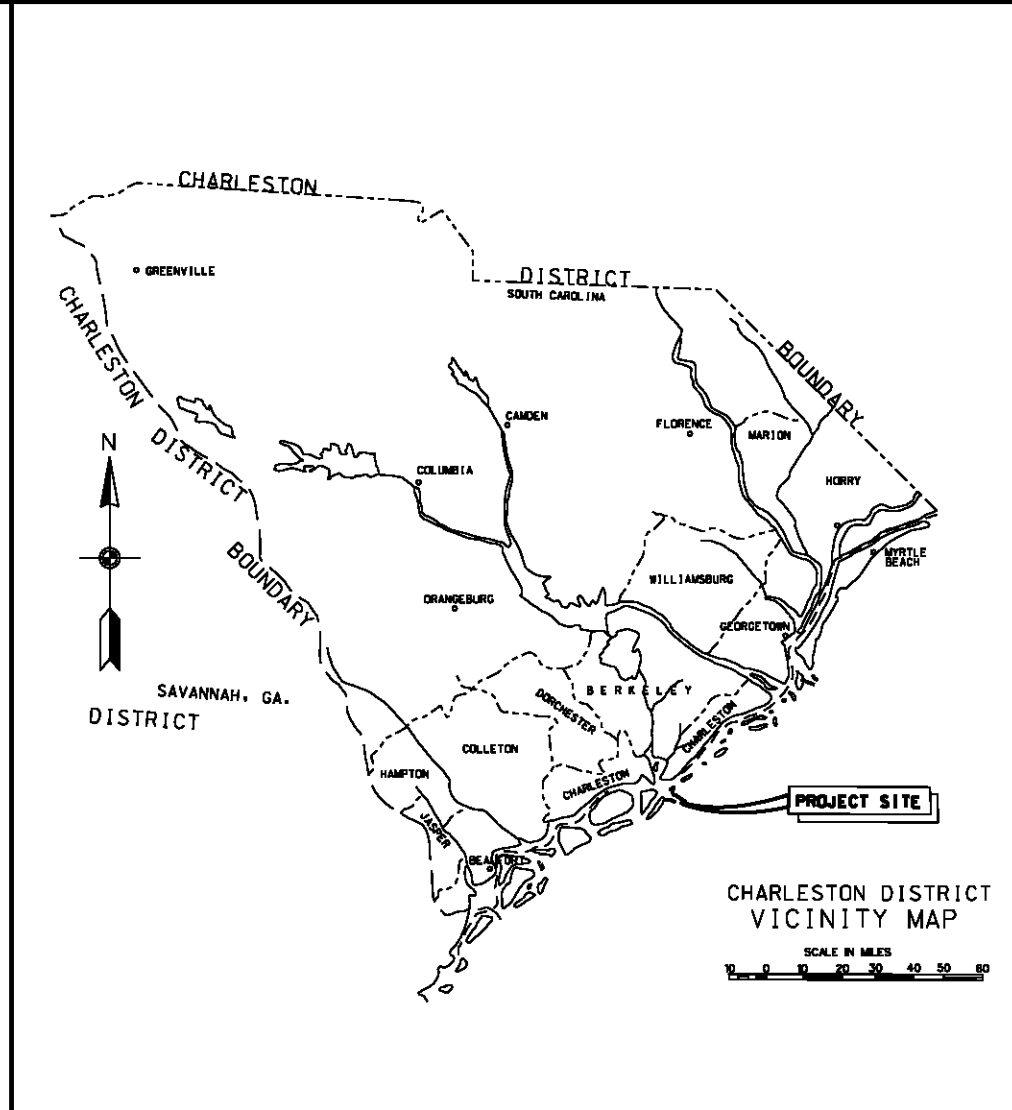


NOTES:  
 1. SOUNDINGS ARE IN FEET AND TENTHS AND REFER TO MEAN LOWER LOW WATER  
 2. HORIZONTAL DATUM IS SC STATE PLANE COORDINATES NAD 1983.  
 3. THE SOUNDINGS ON THIS DRAWING ONLY INDICATE THE GENERAL CONDITION OF THE CHANNEL ON THE DATE OF SURVEY.  
 4. DATE OF SURVEY: 27 SEP. 2012 CONDITION  
 5. THE POSITIONS OF THE AIDS TO NAVIGATION ON THESE SHEETS ARE FROM OLDER SURVEYS AND MAY NOT BE ACCURATE.



US Army Corps of Engineers  
 Charleston District

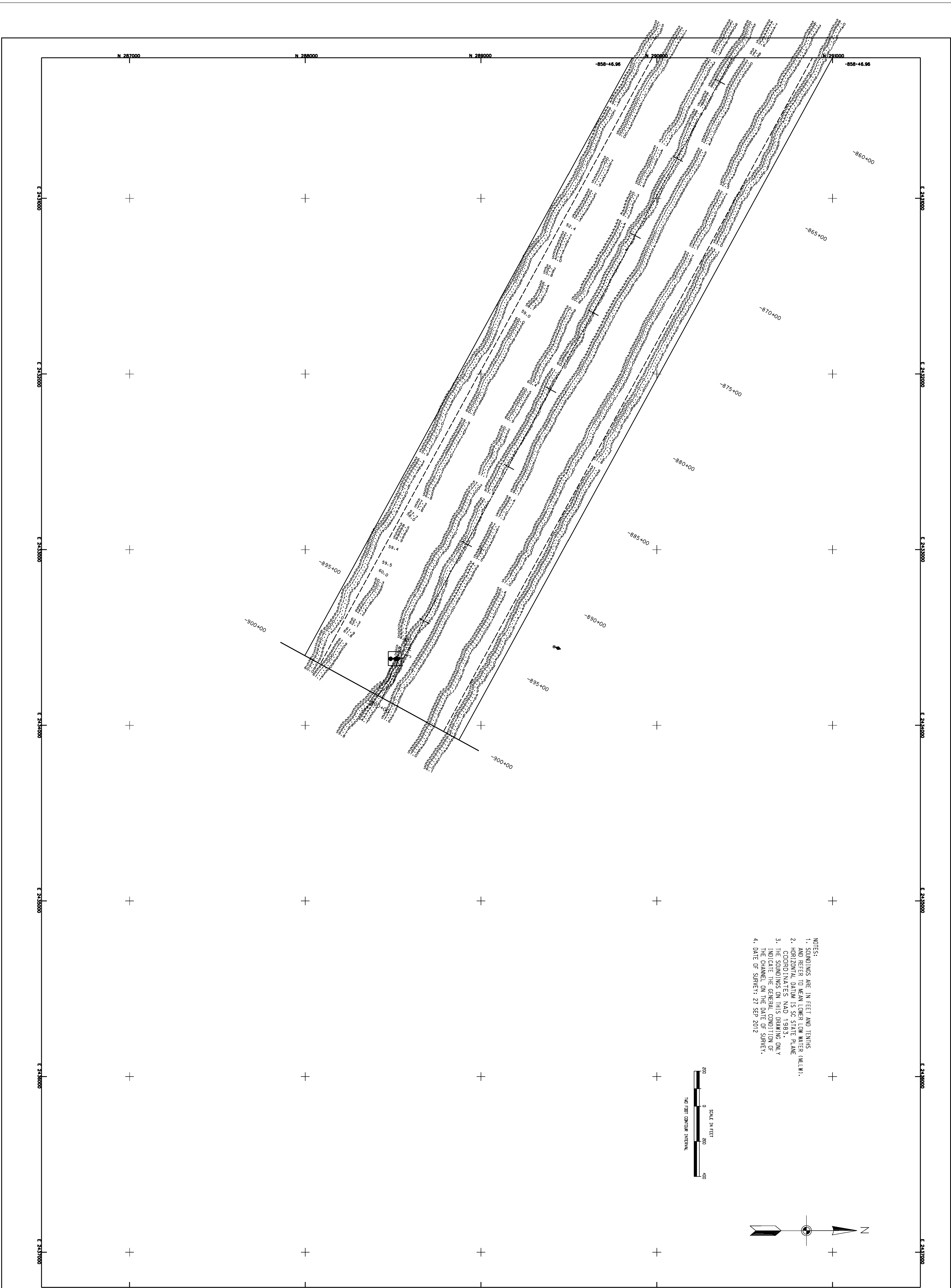
NO.	DATE	APPROV.	DESCRIPTION

Designed by:	Check by:	Date:	Rev:
Drawn by:	Checked by:	OCT 2012	
Released by:	Approved by:	Change No.:	9455
Submitted by:	Permitted by:	Scale:	1" = 200'

CHARLESTON HARBOR  
 CHARLESTON ENTRANCE CONDITION  
**9455**  
 CHARLESTON & BERKELEY COUNTIES, SOUTH CAROLINA

Submitted by:  
 CHIEF, NAVIGATION SECTION  
 Approved/Recommended:  
 CHIEF, OPERATIONS BRANCH  
 Approved by:  
 CHIEF, TECHNICAL SERVICES DIVISION

SHEET REFERENCE NUMBER  
 SHEET 1 OF 15



- NOTES:
1. SOUNDINGS ARE IN FEET AND TENTHS AND REFER TO MEAN LOWER LOW WATER (M.L.L.W.).
  2. HORIZONTAL DATUM IS SC STATE PLANE COORDINATES NAD 1983.
  3. THE SOUNDINGS ON THIS DRAWING ONLY INDICATE THE GENERAL CONDITION OF THE CHANNEL AS OF THE DATE OF SURVEY.
  4. DATE OF SURVEY: 25 SEP 2012

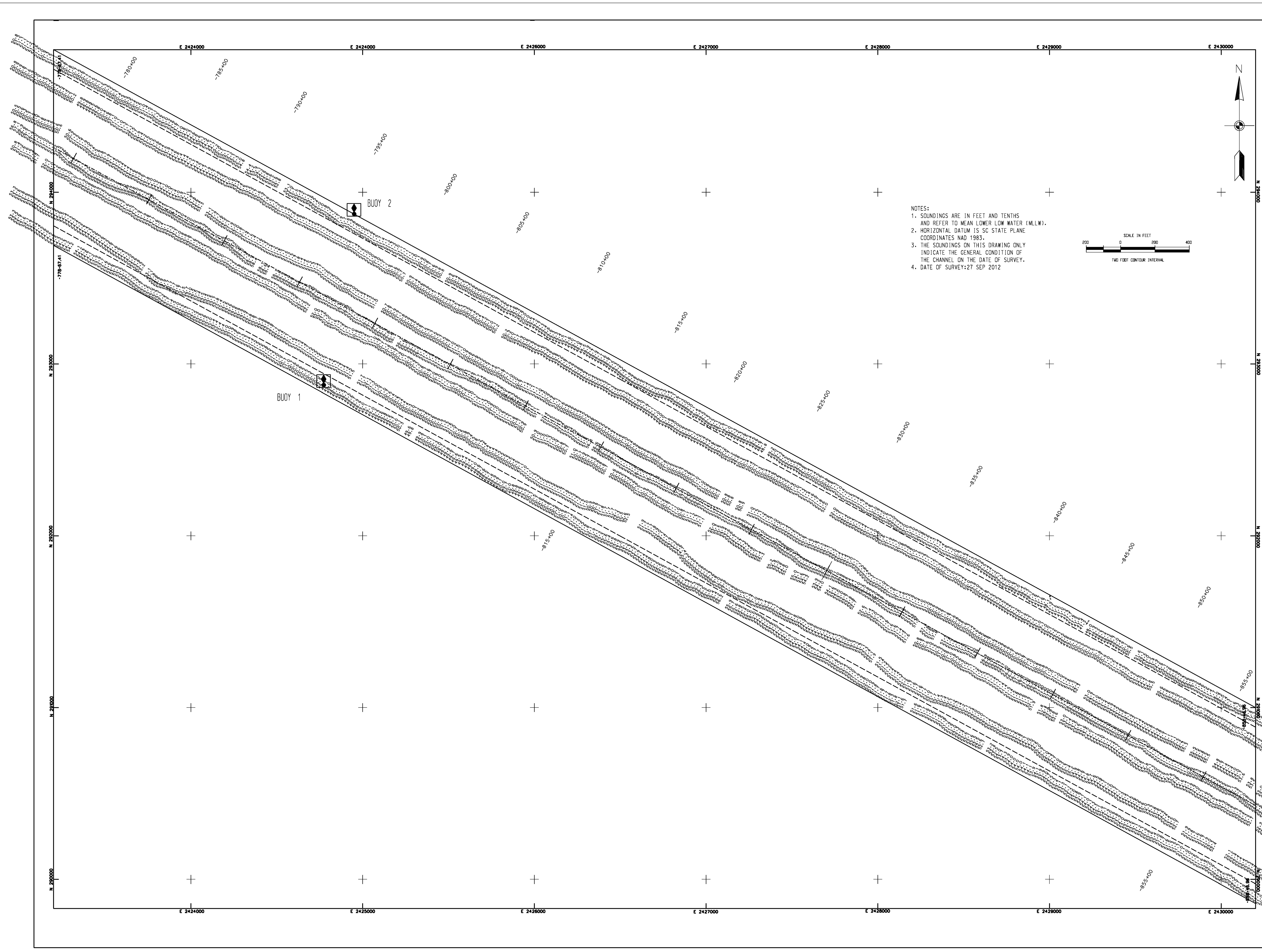
SHEET 2 OF 15  
 REFERENCE NUMBER  
 141020

CHARLESTON HARBOR  
 MAIN CHANNEL  
 CHARLESTON, SC  
 CONDITION SURVEY  
 STA. -900+00.00 to STA. -858+46.96  
 9455  
 CHARLESTON COUNTY SOUTH CAROLINA

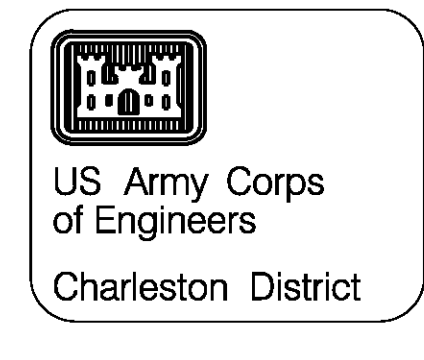
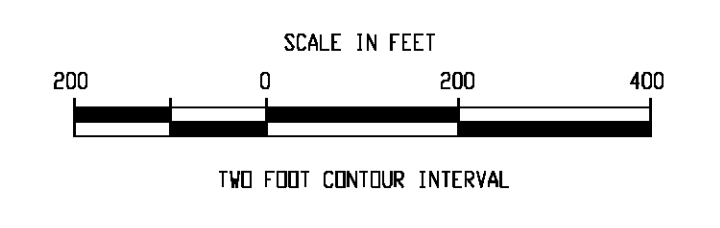
U.S. ARMY ENGINEER DISTRICT CORPS OF ENGINEERS CHARLESTON, SOUTH CAROLINA		Designed by:	Date:	Rev:
Drawn by:	MRV	Checked by:	OCT 2012	
Reviewed by:		Drawing Code:	9455	
Submitted by:		File name:		
		Plot date:		
		Dwg scale: 1" = 200'		

MARK	DESCRIPTION	DATE	APPY.	MARK	DESCRIPTION	DATE	APPY.

US Army Corps of Engineers  
 Charleston District



- NOTES:
1. SOUNDINGS ARE IN FEET AND TENTHS AND REFER TO MEAN LOWER LOW WATER (MLLW).
  2. HORIZONTAL DATUM IS SC STATE PLANE COORDINATES NAD 1983.
  3. THE SOUNDINGS ON THIS DRAWING ONLY INDICATE THE GENERAL CONDITION OF THE CHANNEL ON THE DATE OF SURVEY.
  4. DATE OF SURVEY: 27 SEP 2012

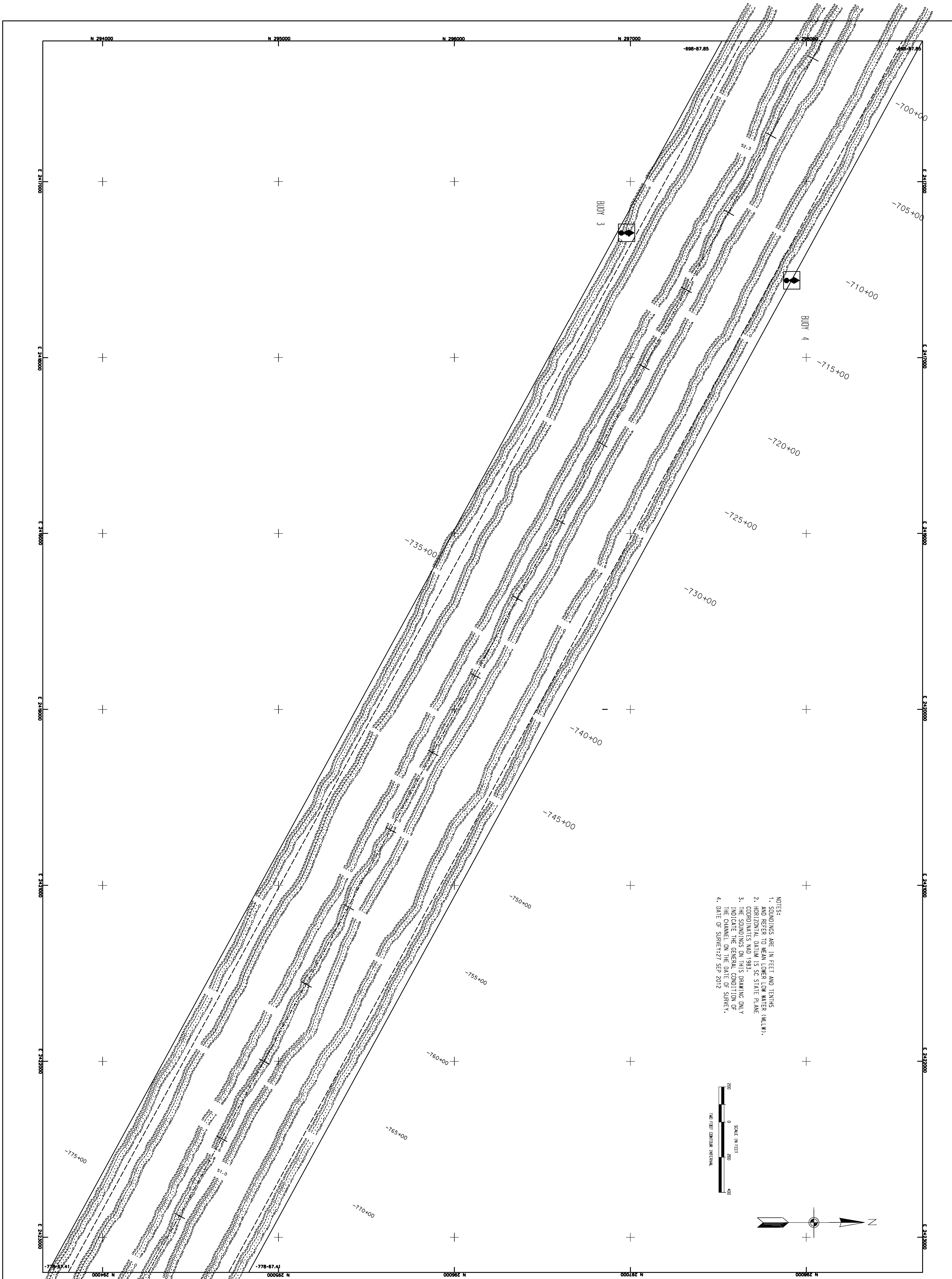


NO.	DATE	DESCRIPTION	BY

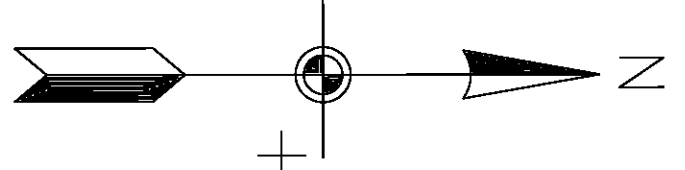
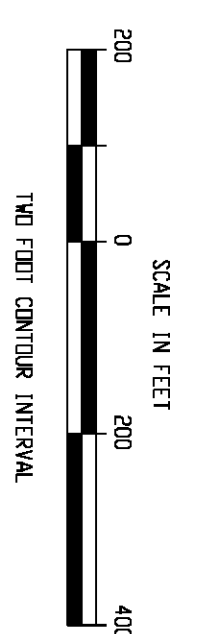
Designed by	MRV	Date	OCT 2012
Drawn by	MRV	Sheet No.	9455
Reviewed by		Drawing Code	
Checked by		File name	
		Plot scale	1" = 200'

U.S. ARMY ENGINEER DISTRICT  
CORPS OF ENGINEERS  
CHARLESTON, SOUTH CAROLINA

CHARLESTON HARBOR  
MAIN CHANNEL  
CHARLESTON, SC  
**CONDITION SURVEY**  
STA. -858 + 46.96 to STA. -778 + 67.41  
CHARLESTON COUNTY 9455 SOUTH CAROLINA



NOTES:  
 1. SOUNDINGS ARE IN FEET AND TENTHS.  
 2. HORIZONTAL DATUM IS STATE PLANE COORDINATES AND 1983.  
 3. THE SOUNDINGS ON THIS DRAWING ONLY INDICATE THE GENERAL CONDITION OF THE CHANNEL ON THE DATE OF SURVEY.  
 4. DATE OF SURVEY: 27 SEP 2012



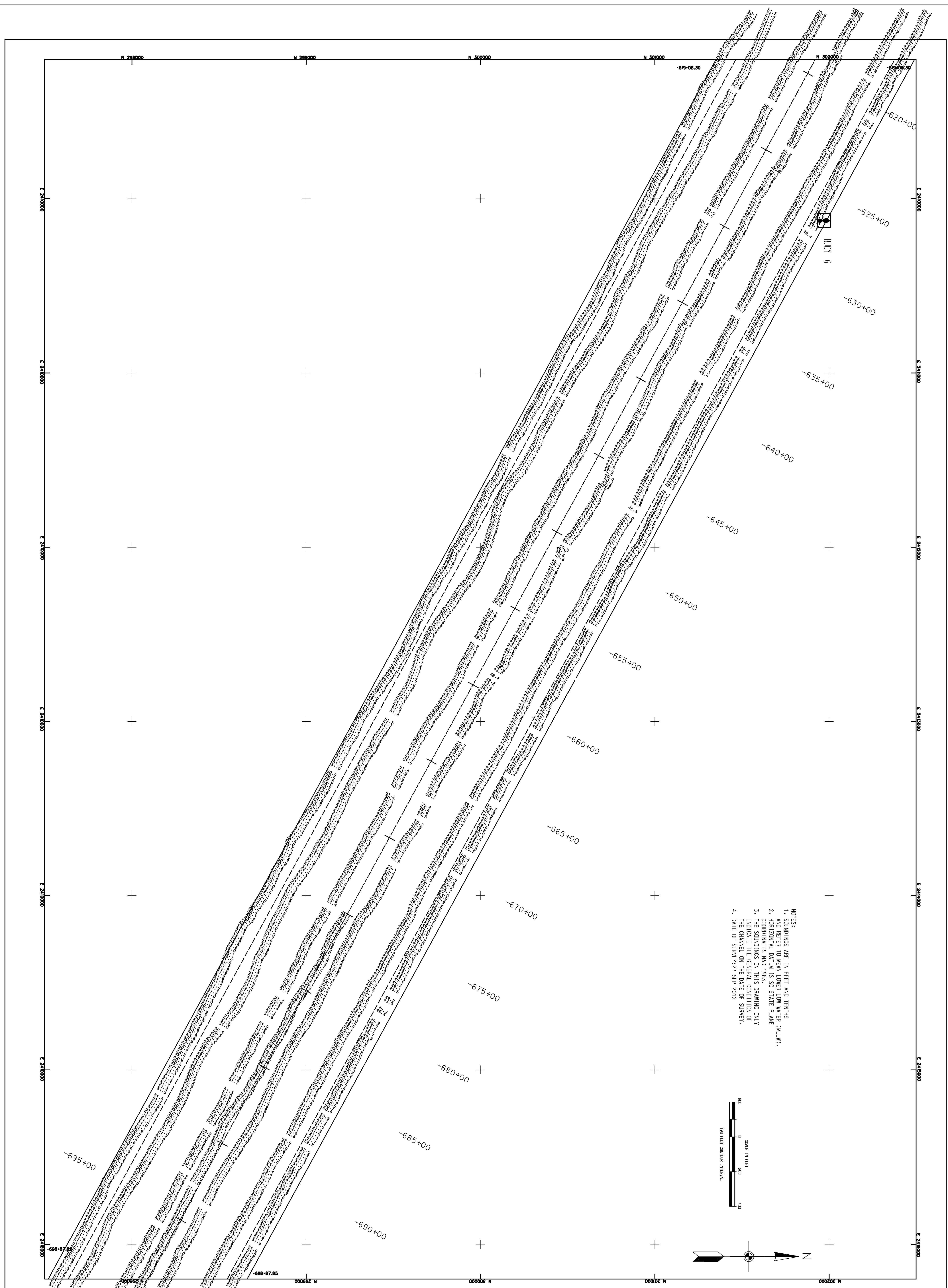
SHEET 4 OF 15  
 SHEET  
 NUMBER

CHARLESTON HARBOR  
 MAIN CHANNEL  
 CHARLESTON, SC  
 CONDITION SURVEY  
 STA. -778+67.41 to STA. -698+87.85  
 9455  
 CHARLESTON COUNTY SOUTH CAROLINA

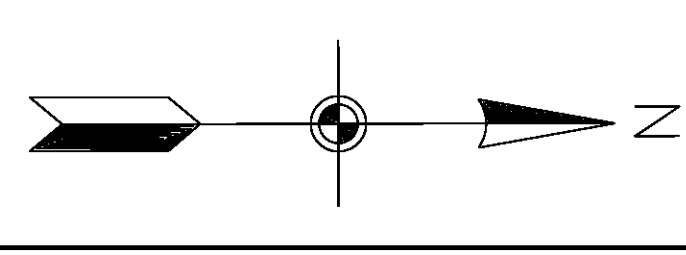
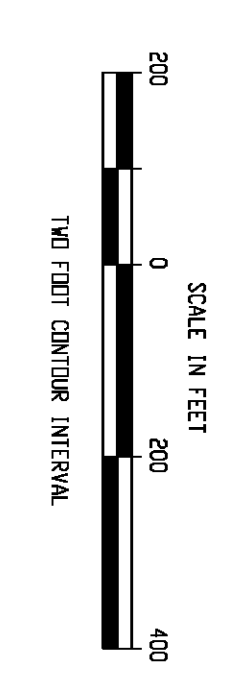
Designed by:	Date:	Rev:
Drawn by:	Oct by:	Design file no.
Reviewed by:		Drawing Code:
Submitted by:	File name:	Plot date:
	Dep work:	1 - 200

MARK	DESCRIPTION	DATE	APPROV	MARK	DESCRIPTION	DATE	APPROV

U.S. Army Corps of Engineers  
 Charleston District



NOTES:  
 1. SOUNDINGS ARE IN FEET AND TENSIS  
 2. HORIZONTAL CONTROL IS U.S. NATIONAL METER (NAD 83)  
 3. THE SOUNDINGS ON THIS DRAWING ONLY INDICATE THE GENERAL CONDITION OF THE CHANNEL ON THE DATE OF SURVEY.  
 4. DATE OF SURVEY: 27 SEP 2012



SHEET 2 OF 15

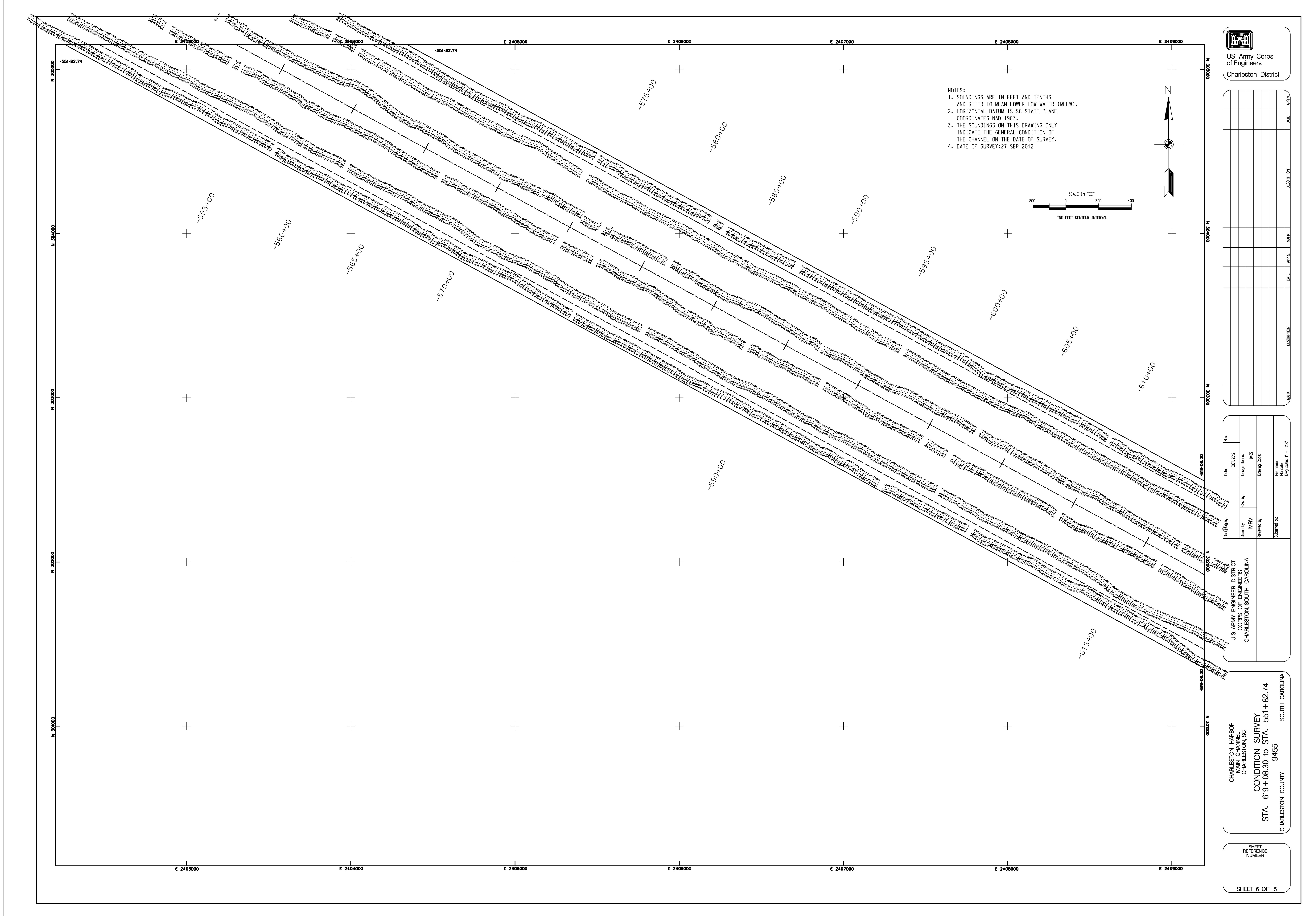
CHARLESTON HARBOR  
 MAIN CHANNEL  
 CHARLESTON, SC  
 CONDITION SURVEY  
 STA. -698+87.85 to STA. -619+08.30  
 9455  
 CHARLESTON COUNTY SOUTH CAROLINA

U.S. ARMY ENGINEER DISTRICT  
 CORPS OF ENGINEERS  
 CHARLESTON, SOUTH CAROLINA

Designed by:	Date:	Rev:
Drawn by:	Oct by:	Design file no.:
Reviewed by:		Drawing Code:
Submitted by:	File name:	Plot date:
	Draw scale: 1" = 200'	

MARK	DESCRIPTION	DATE	APPROV.	MARK	DESCRIPTION	DATE	APPROV.

U.S. Army Corps  
 of Engineers  
 Charleston District



- NOTES:
1. SOUNDINGS ARE IN FEET AND TENTHS AND REFER TO MEAN LOWER LOW WATER (MLLW).
  2. HORIZONTAL DATUM IS SC STATE PLANE COORDINATES NAD 1983.
  3. THE SOUNDINGS ON THIS DRAWING ONLY INDICATE THE GENERAL CONDITION OF THE CHANNEL ON THE DATE OF SURVEY.
  4. DATE OF SURVEY: 27 SEP 2012

US Army Corps of Engineers  
Charleston District

MARK	DESCRIPTION	DATE	APPY

Drawn by MRY	Check by MRY	Date 10/2012
Designed by MRY	Checked by MRY	Drawing No. No. 9455
Reviewed by MRY	Checked by MRY	Drawing Code
Surveyed by MRY	Checked by MRY	File Name Dwg No. 17 - 2012

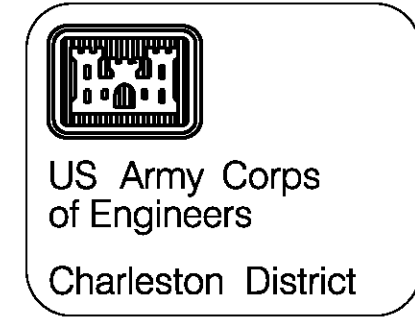
U.S. ARMY ENGINEER DISTRICT  
CHESAPEAKE DIVISION  
CHARLESTON SOUTH CAROLINA

CHARLESTON HARBOR  
MAIN CHANNEL  
CHARLESTON, SC

CONDITION SURVEY  
STA. -619+08.30 TO STA. -551+82.74

CHARLESTON COUNTY SOUTH CAROLINA  
9455

SHEET REFERENCE NUMBER  
SHEET 6 OF 15



MARK	DESCRIPTION	DATE	APP'D.

Designed by:	Date:	Rev:
Drawn by:		
Checked by:		
Reviewed by:		
Submitted by:		

U.S. ARMY ENGINEER DISTRICT  
CORPS OF ENGINEERS  
CHARLESTON SOUTH CAROLINA

CHARLESTON HARBOR  
MAIN CHANNEL  
CHARLESTON SC

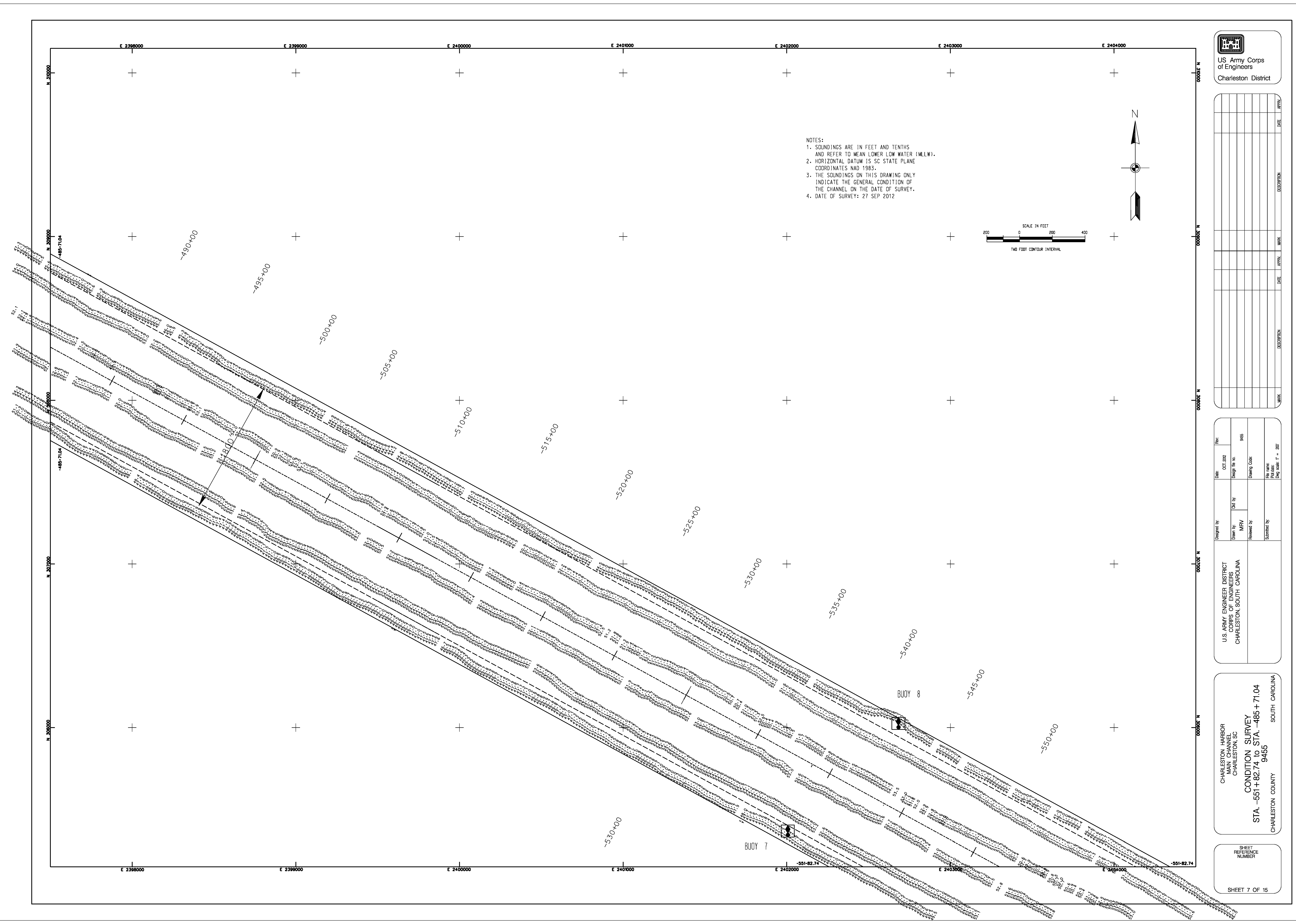
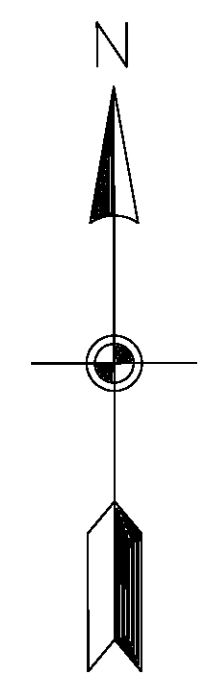
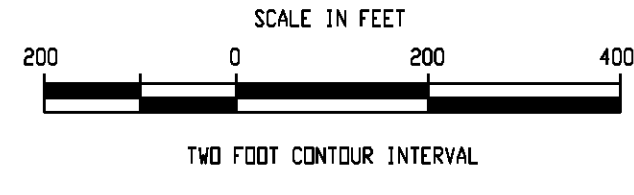
CONDITION SURVEY  
STA. -551+82.74 TO STA. -485+71.04  
9455

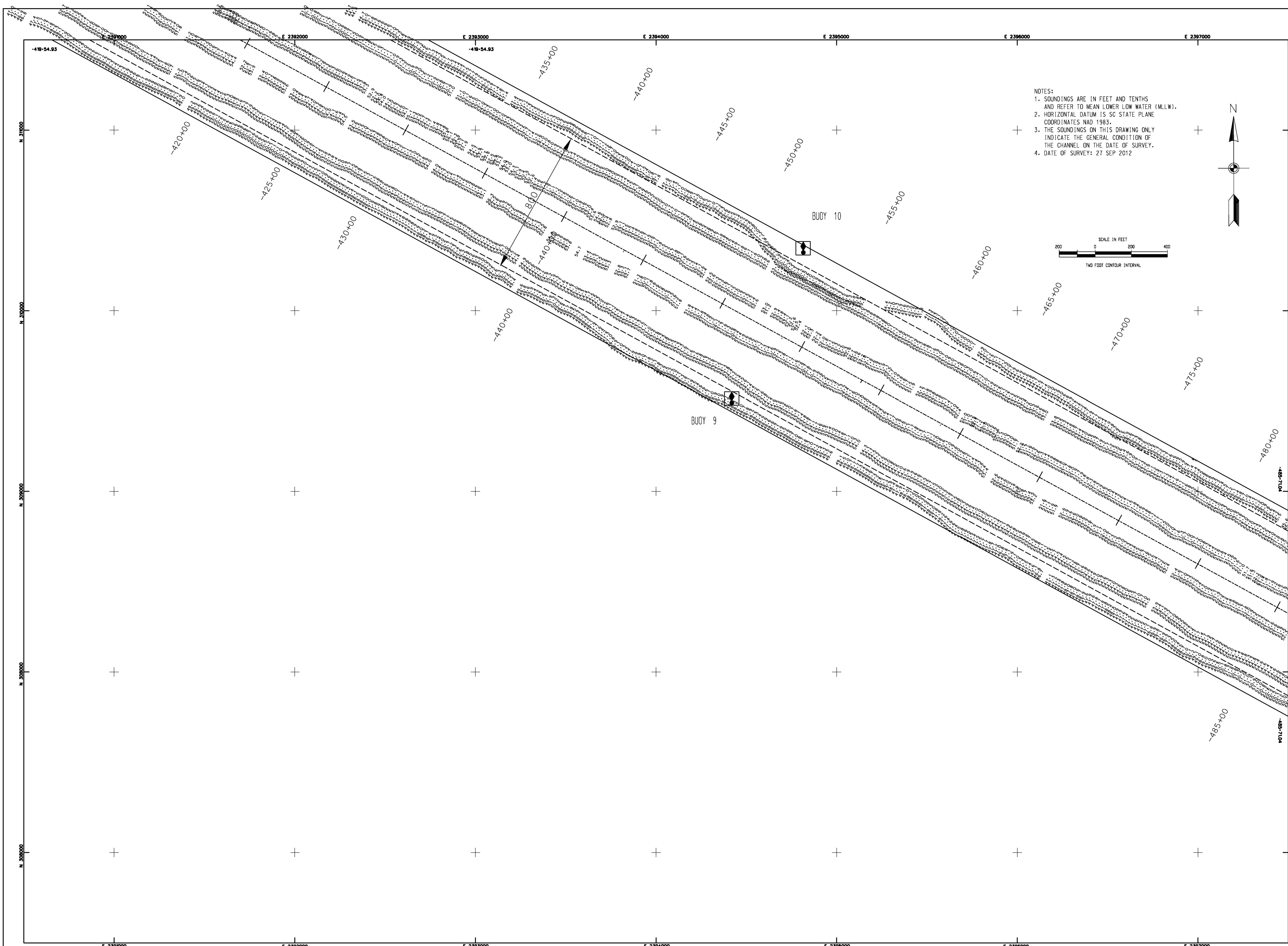
CHARLESTON COUNTY SOUTH CAROLINA

SHEET  
REFERENCE  
NUMBER

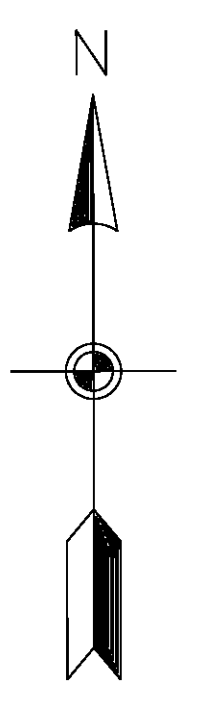
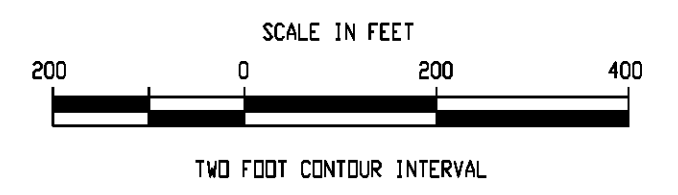
SHEET 7 OF 15


- NOTES:  
 1. SOUNDINGS ARE IN FEET AND TENTHS  
AND REFER TO MEAN LOWER LOW WATER (MLLW).  
 2. HORIZONTAL DATUM IS SC STATE PLANE  
COORDINATES NAD 1983.  
 3. THE SOUNDINGS ON THIS DRAWING ONLY  
INDICATE THE GENERAL CONDITION OF  
THE CHANNEL ON THE DATE OF SURVEY.  
 4. DATE OF SURVEY: 27 SEP 2012





NOTES:  
 1. SOUNDINGS ARE IN FEET AND TENTHS AND REFER TO MEAN LOWER LOW WATER (MLLW).  
 2. HORIZONTAL DATUM IS SC STATE PLANE COORDINATES NAD 1983.  
 3. THE SOUNDINGS ON THIS DRAWING ONLY INDICATE THE GENERAL CONDITION OF THE CHANNEL ON THE DATE OF SURVEY.  
 4. DATE OF SURVEY: 27 SEP 2012



  
 US Army Corps  
 of Engineers  
 Charleston District

MARK	DESCRIPTION	DATE	APPN

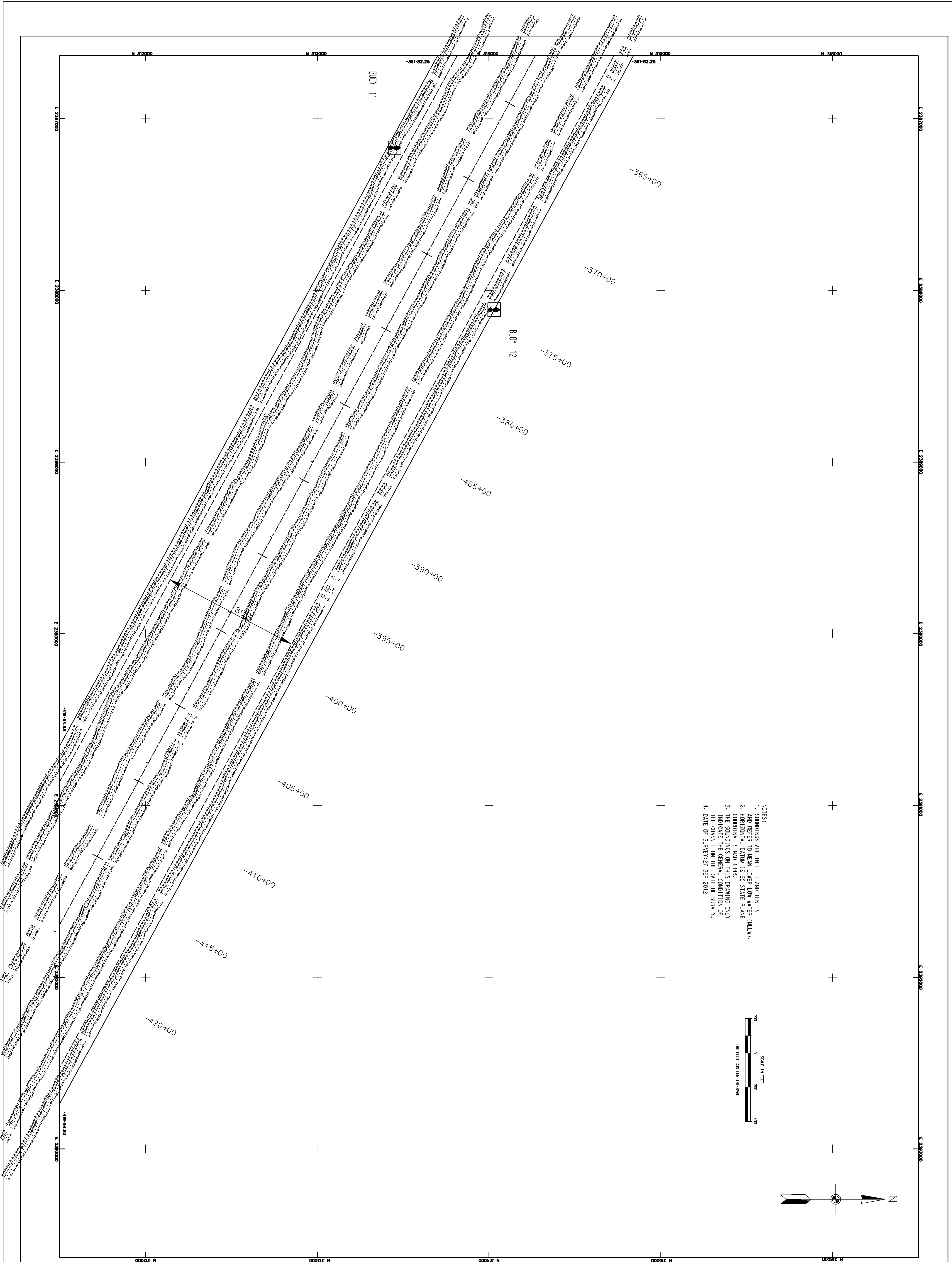
Designed by:	MRV	Date:	OCT 2012
Drawn by:	MRV	Drawn by no.:	945
Reviewed by:		Drawing Code:	
Submitted by:		File name:	
		File path:	
		File size:	1.0 MB

U.S. ARMY ENGINEER DISTRICT  
 CORPS OF ENGINEERS  
 CHARLESTON SOUTH CAROLINA

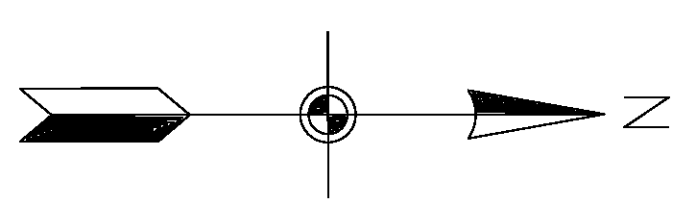
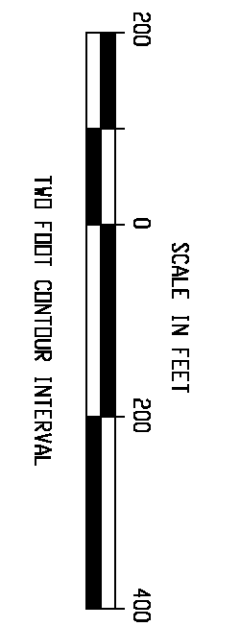
CHARLESTON HARBOR  
 MAIN CHANNEL  
 CHARLESTON, SC  
**CONDITION SURVEY**  
 STA. -485+71.04 to STA. -419+54.93  
 9455  
 CHARLESTON COUNTY SOUTH CAROLINA

SHEET  
 REFERENCE  
 NUMBER  
 SHEET 8 OF 15





- NOTES:
1. SOUNDINGS ARE IN FEET AND TENTHS AND REFER TO MEAN LOWER LOW WATER (MLLW).
  2. SOUNDINGS ARE TO THE CENTER OF THE CHANNEL UNLESS OTHERWISE NOTED.
  3. THE SOUNDINGS ON THIS DRAWING ONLY INDICATE THE GENERAL CONDITION OF THE CHANNEL ON THE DATE OF SURVEY.
  4. DATE OF SURVEY: 27 SEP 2012



CHARLESTON HARBOR  
MAIN CHANNEL  
CHARLESTON, SC

CONDITION SURVEY  
STA. -419+54.93 to STA. -361+82.25  
9455

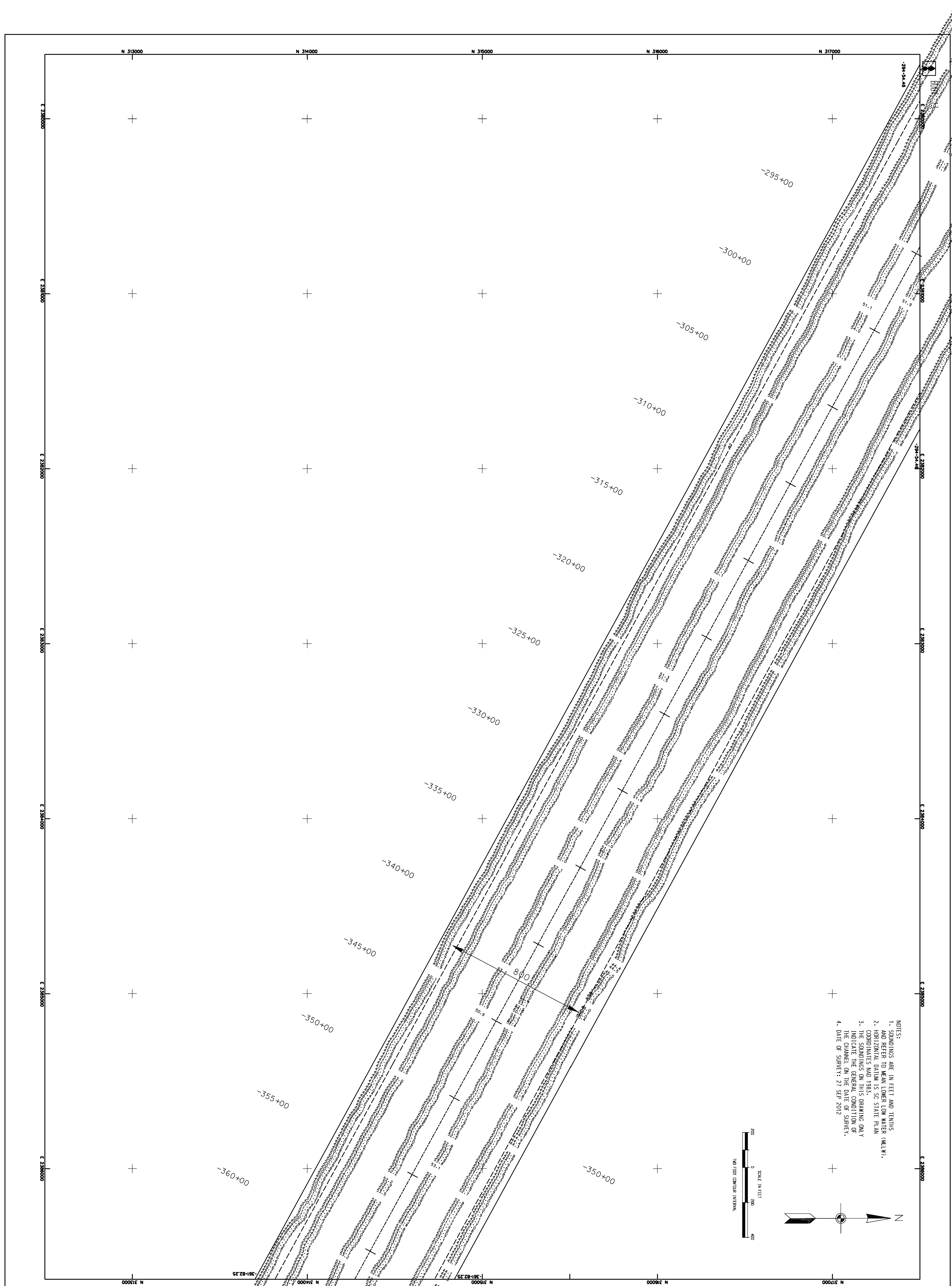
CHARLESTON COUNTY SOUTH CAROLINA

Designed by:	Date:	Rev:
Drawn by:	Oct. 2012	
Checked by:	Design No.:	9455
Reviewed by:	Drawing Code:	
Submitted by:	File Name:	
	Plot Date:	
	Draw Scale:	1" = 200'

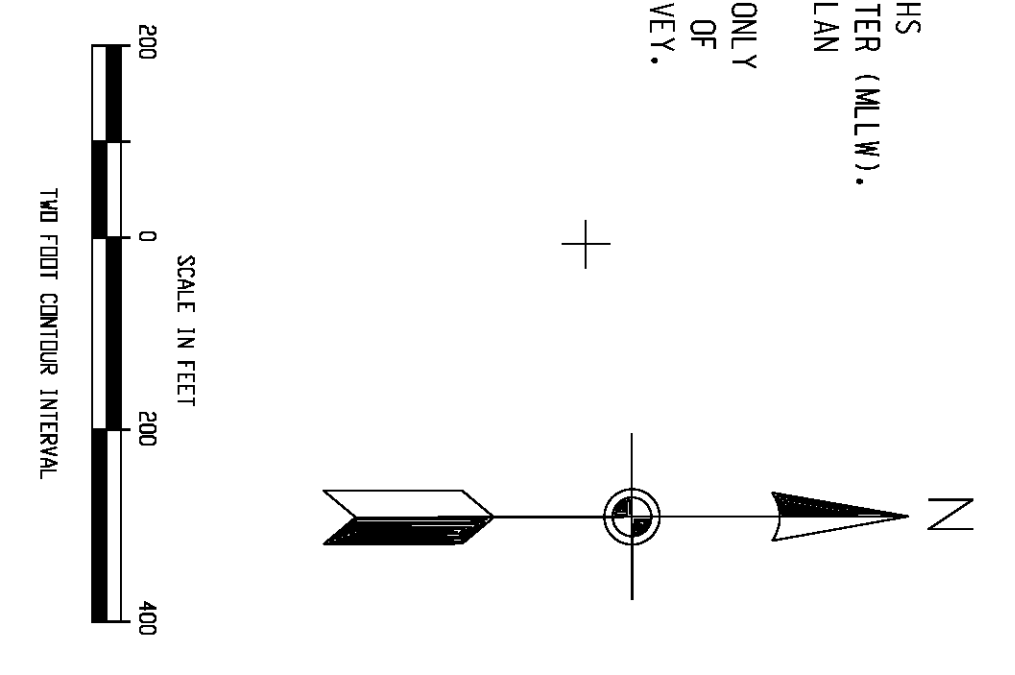
MARK	DESCRIPTION	DATE	APPR.	MARK	DESCRIPTION	DATE	APPR.

U.S. Army Corps of Engineers  
Charleston District

SHEET 9 OF 15



- NOTES:
1. SOUNDINGS ARE IN FEET AND TENTHS AND REFER TO MEAN LOWER LOW WATER (MLLW).
  2. HORIZONTAL DATUM IS SC STATE PLAIN (COMBONANTS AND 1983).
  3. SOUNDINGS AND 1983. SOUNDINGS ONLY INDICATE THE GENERAL CONDITION OF THE CHANNEL ON THE DATE OF SURVEY.
  4. DATE OF SURVEY: 27 SEP 2012



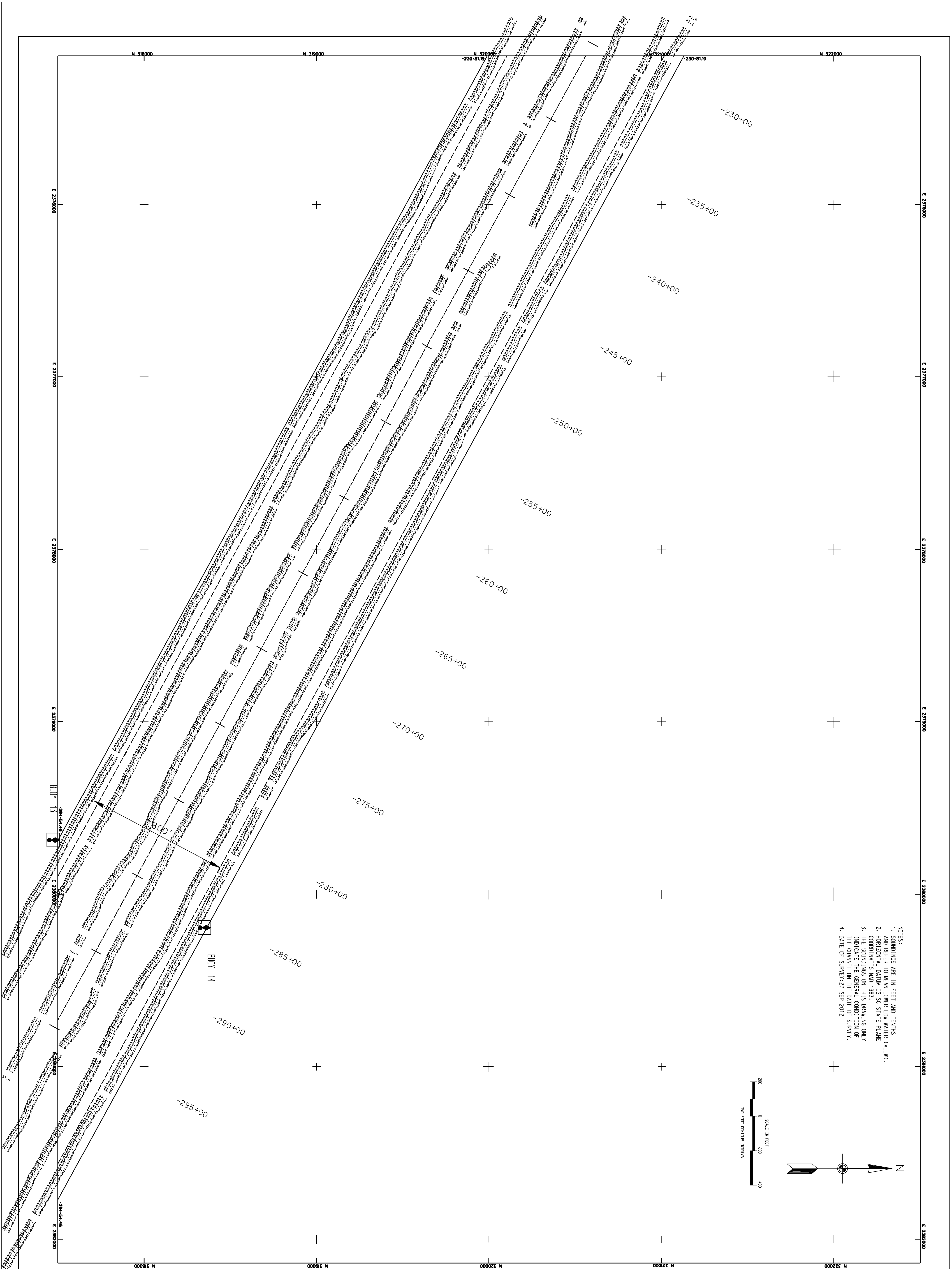
SHEET  
REFERENCE  
NUMBER  
SHEET 10 OF 15

CHARLESTON HARBOR  
MAIN CHANNEL  
CHARLESTON, SC  
**CONDITION SURVEY**  
STA. -361 + 82.25 to STA. -294 + 54.46  
9455  
CHARLESTON COUNTY SOUTH CAROLINA

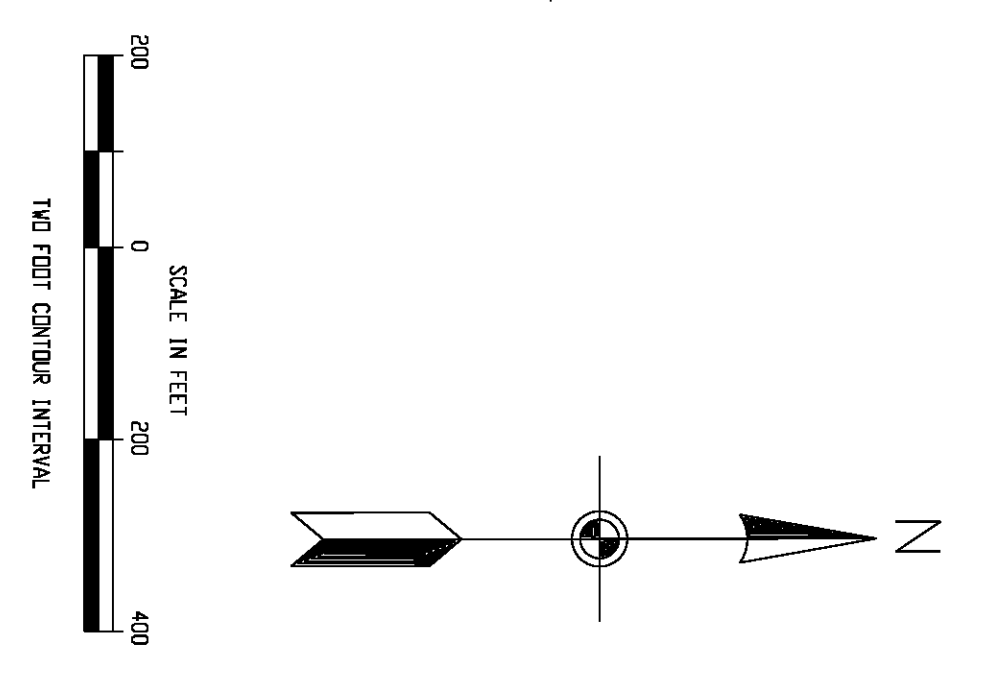
U.S. ARMY ENGINEER DISTRICT CORPS OF ENGINEERS CHARLESTON, SOUTH CAROLINA		Designed by:	Date:	Rev:
Drawn by:	MRV	Checked by:	OCT. 2012	
Reviewed by:		Design file no.:	9455	
Submitted by:		Drawing Code:		
		File name:		
		Plot date:		
		Draw scale: 1" = 200'		

MARK	DESCRIPTION	DATE	APPROV	MARK	DESCRIPTION	DATE	APPROV

U.S. ARMY  
CORPS OF ENGINEERS  
Charleston District



- NOTES:
1. SOUNDINGS ARE IN FEET AND TENTHS AND REFER TO MEAN LOWER LOW WATER (MLLW).
  2. HORIZONTAL DIMENSIONS ARE IN FEET AND TENTHS.
  3. THE SOUNDINGS ON THIS DRAWING ONLY INDICATE THE GENERAL CONDITION OF THE CHANNEL ON THE DATE OF SURVEY.
  4. DATE OF SURVEY: 27 SEP 2012



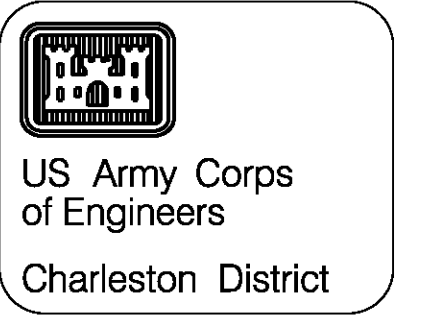
SHEET 11 OF 15  
SHEET REFERENCE NUMBER

CHARLESTON HARBOR  
MAIN CHANNEL  
CHARLESTON, SC  
**CONDITION SURVEY**  
STA. -294 + 54.46 to STA. -230 + 81.19  
9455  
CHARLESTON COUNTY SOUTH CAROLINA

U.S. ARMY ENGINEER DISTRICT CORPS OF ENGINEERS CHARLESTON, SOUTH CAROLINA		Designed by:	Date:	Rev:
Drawn by:	MRV	Checked by:	OCT 2012	
Reviewed by:		Design file no.:	9455	
Submitted by:		Drawing Code:		
		File name:		
		Plot date:		
		Draw scale: 1" = 200'		

MARK	DESCRIPTION	DATE	APPR.	MARK	DESCRIPTION	DATE	APPR.

U.S. Army Corps of Engineers  
Charleston District



MARK	DESCRIPTION	DATE	APPR.	DATE	APPR.

DESIGNED BY	DATE	REV.
DRAWN BY	DATE	NO.
CHECKED BY	DATE	NO.
APPROVED BY	DATE	NO.

U.S. ARMY ENGINEER DISTRICT  
CORPS OF ENGINEERS  
CHARLESTON SOUTH CAROLINA

CHARLESTON HARBOR  
MAIN CHANNEL  
CHARLESTON, SC

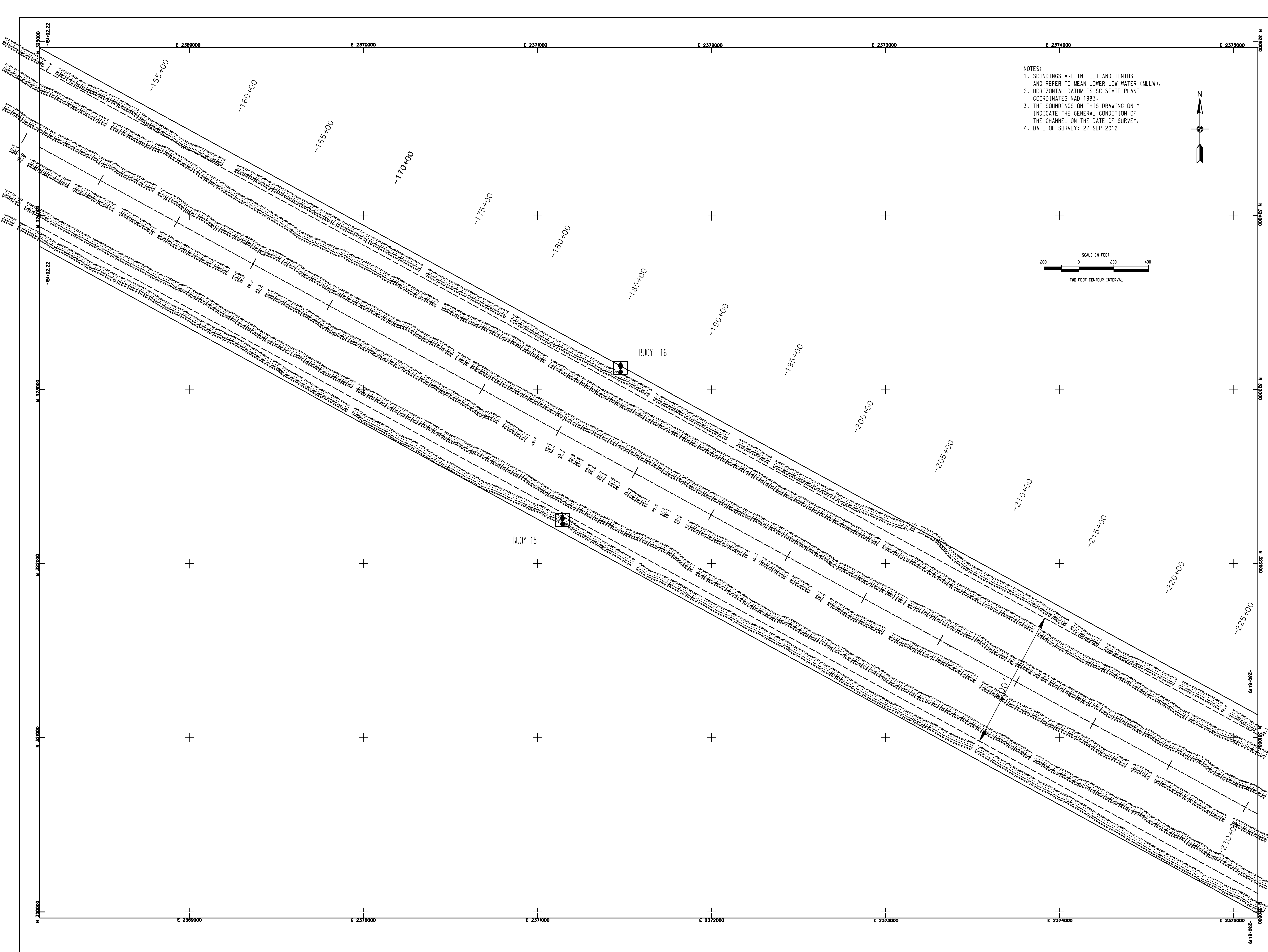
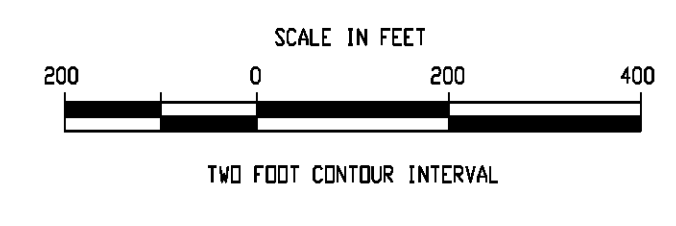
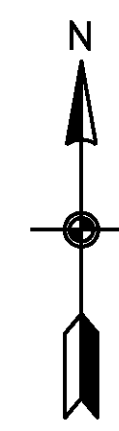
**CONDITION SURVEY**  
STA. -230+81.19 TO STA. -151+02.22

CHARLESTON COUNTY SOUTH CAROLINA 9455

SHEET  
REFERENCE  
NUMBER

SHEET 12 OF 15

- NOTES:  
1. SOUNDINGS ARE IN FEET AND TENTHS AND REFER TO MEAN LOWER LOW WATER (MLLW).  
2. HORIZONTAL DATUM IS SC STATE PLANE COORDINATES NAD 1983.  
3. THE SOUNDINGS ON THIS DRAWING ONLY INDICATE THE GENERAL CONDITION OF THE CHANNEL ON THE DATE OF SURVEY.  
4. DATE OF SURVEY: 27 SEP 2012



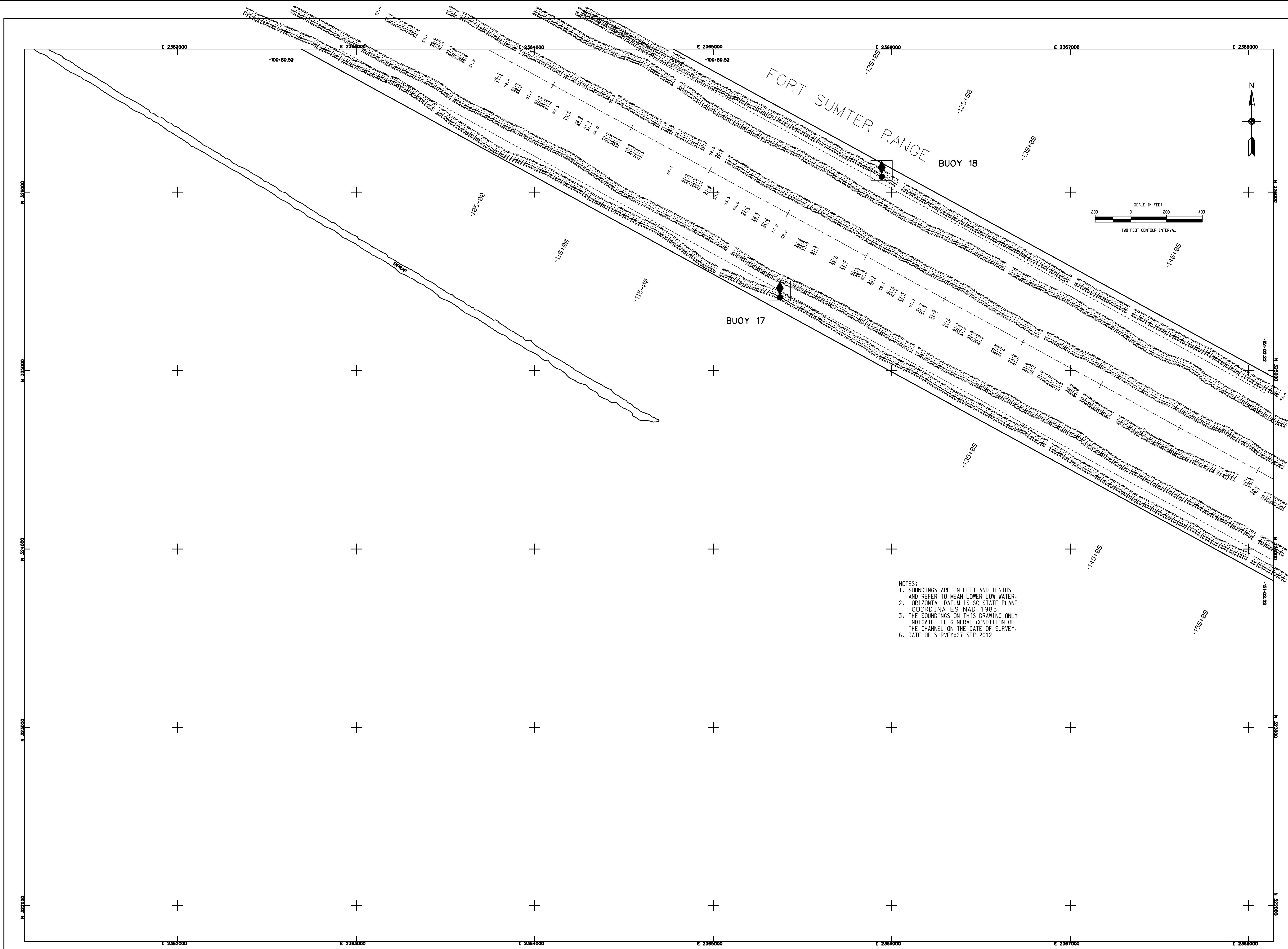
NO.	DESCRIPTION	DATE	BY

DESIGNED BY: MERVIN	CHECKED BY: MERVIN	DATE: OCT 2012
DRAWN BY: MERVIN	SCALE: 1" = 200'	PROJECT NO: 9455
REVIEWED BY: MERVIN	DRAWING CODE: 8455	NO. OF SHEETS: 15
SUBMITTED BY: MERVIN	DATE OF SURVEY: 27 SEP 2012	NO. OF SHEETS: 15

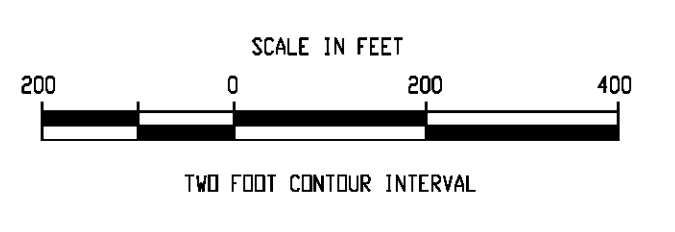
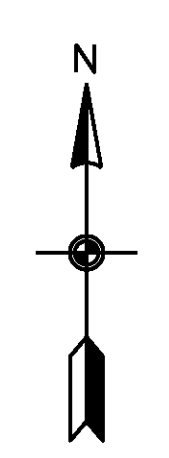
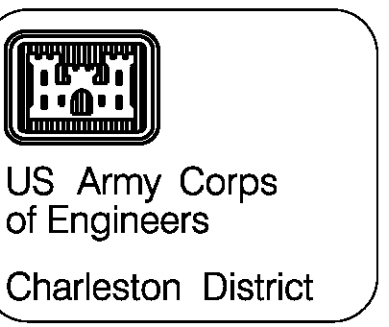
U.S. ARMY ENGINEER DISTRICT  
CORPS OF ENGINEERS  
CHARLESTON SOUTH CAROLINA

CHARLESTON HARBOR  
MAIL CHANNEL  
CHARLESTON, SC  
CONDITION SURVEY  
STA. -151+02.22 TO STA. -100+80.52  
CHARLESTON COUNTY SOUTH CAROLINA  
9455

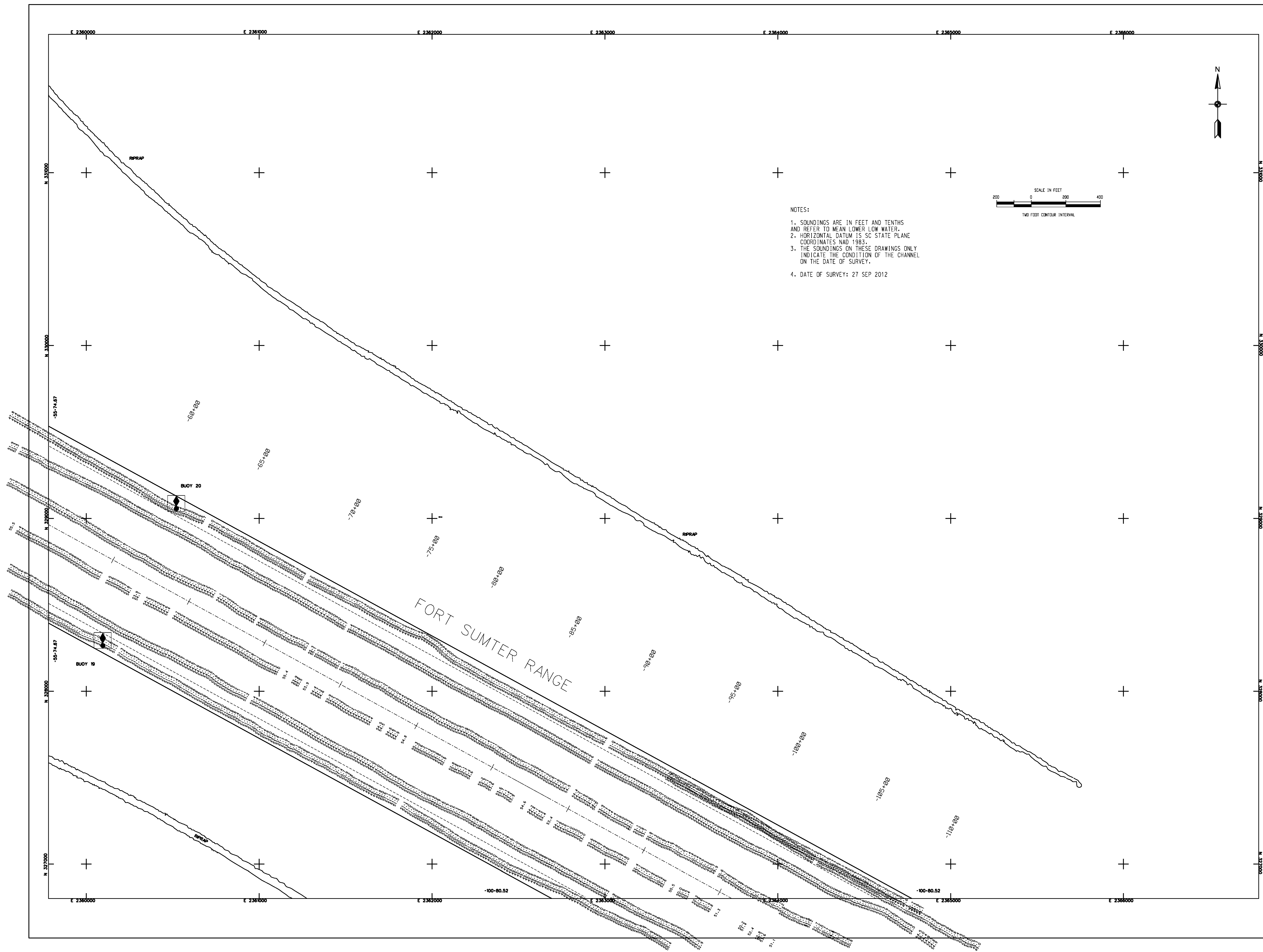
SHEET  
REFERENCE  
NUMBER  
  
SHEET 13 OF 15



NOTES:  
1. SOUNDINGS ARE IN FEET AND TENTHS AND REFER TO MEAN LOWER LOW WATER.  
2. HORIZONTAL DATUM IS SC STATE PLANE COORDINATES NAD 1983  
3. THE SOUNDINGS ON THIS DRAWING ONLY INDICATE THE GENERAL CONDITION OF THE CHANNEL ON THE DATE OF SURVEY.  
6. DATE OF SURVEY: 27 SEP 2012



NOTES:  
 1. SOUNDINGS ARE IN FEET AND TENTHS AND REFER TO MEAN LOWER LOW WATER.  
 2. HORIZONTAL DATUM IS SC STATE PLANE COORDINATES NAD 1983.  
 3. THE SOUNDINGS ON THESE DRAWINGS ONLY INDICATE THE CONDITION OF THE CHANNEL ON THE DATE OF SURVEY.  
 4. DATE OF SURVEY: 27 SEP 2012



MARK	DESCRIPTION	DATE	APPX.

Designed by: Drawn by: Reviewed by: Submitted by:	MRY MRY   	Date: OCT 2012	Project No.:  Drawing Code:  File name: Plot date: Plot scale: 1" = 200'
--	------------------------	-------------------	---

U.S. ARMY ENGINEER DISTRICT  
 CORPS OF ENGINEERS  
 CHARLESTON, SOUTH CAROLINA

CHARLESTON HARBOR  
 MAIN CHANNEL  
 CHARLESTON, SC  
**CONDITION SURVEY**  
 STA. -100+80.52 TO STA. -55+74.67  
 CHARLESTON COUNTY 9455 SOUTH CAROLINA



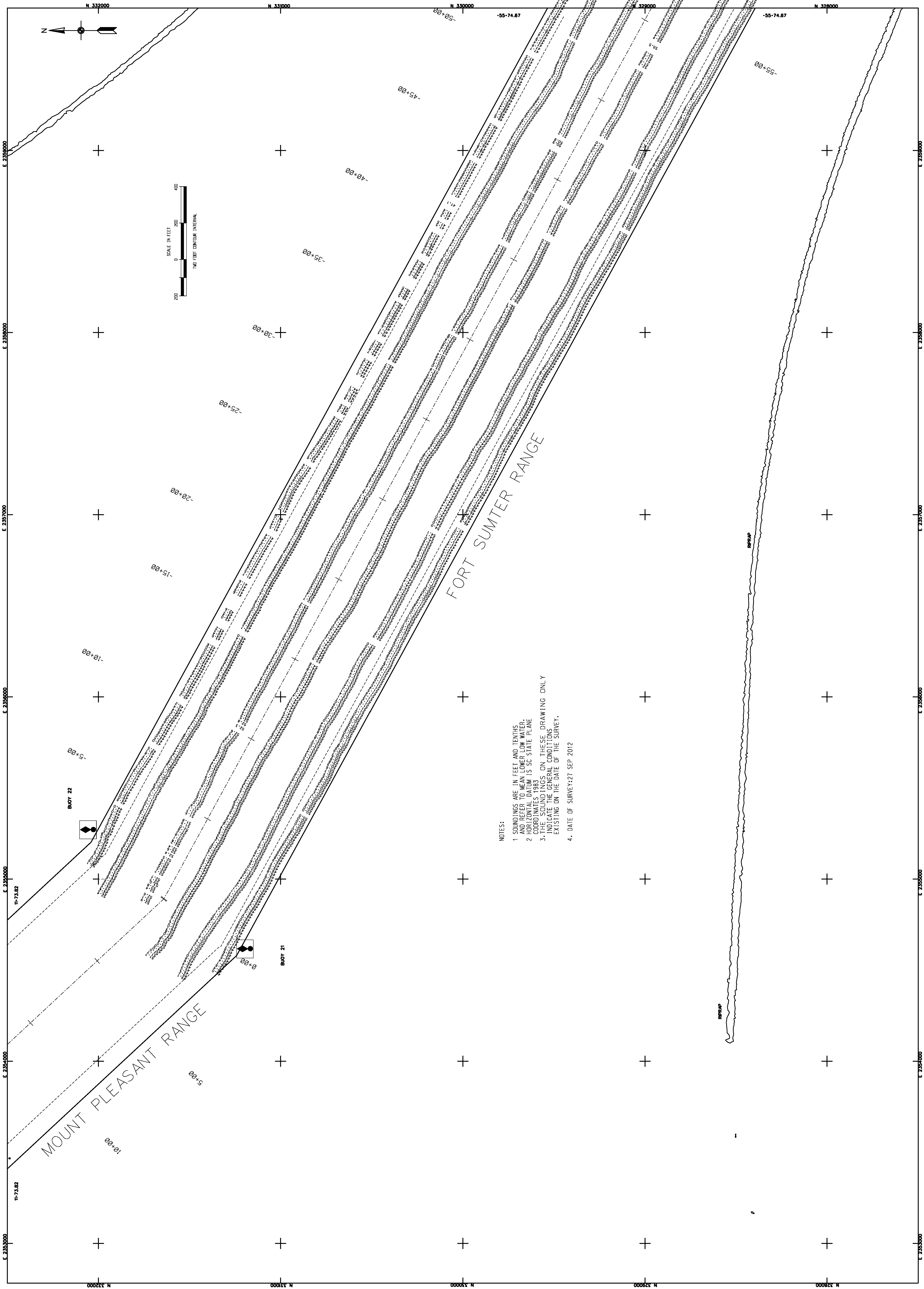
MARK	DATE	DESCRIPTION	MARK	DATE	DESCRIPTION

DATE	BY	DESCRIPTION
10/27/2012		

CHARLESTON HARBOR  
MAIN CHANNEL  
CHARLESTON, SC  
CONDITION SURVEY  
STA. 56 + 74.67 TO STA. 11 + 73.82  
9455  
CHARLESTON COUNTY  
SOUTH CAROLINA

SHEET  
REFERENCE  
NUMBER

SHEET 15 OF 15



NOTES:  
1. SOUNDINGS ARE IN FEET AND TENTHS AND REFER TO MEAN LOWE WATER.  
2. HORIZONTAL DATUM IS SC STATE PLANE COORDINATES 1983.  
3. THIS DRAWING IS FOR GENERAL INFORMATION ONLY. INDICATING THE GENERAL CONDITIONS EXISTING ON THE DATE OF THE SURVEY.  
4. DATE OF SURVEY: 27 SEP 2012