

# VA Heart Failure Network

11/8/2007

# Increasing Early Follow-up Following Heart Failure Hospitalization

Paul Heidenreich MD, MS

Barry Massie MD

Anju Sahay PhD

Robert Jesse MD, PhD

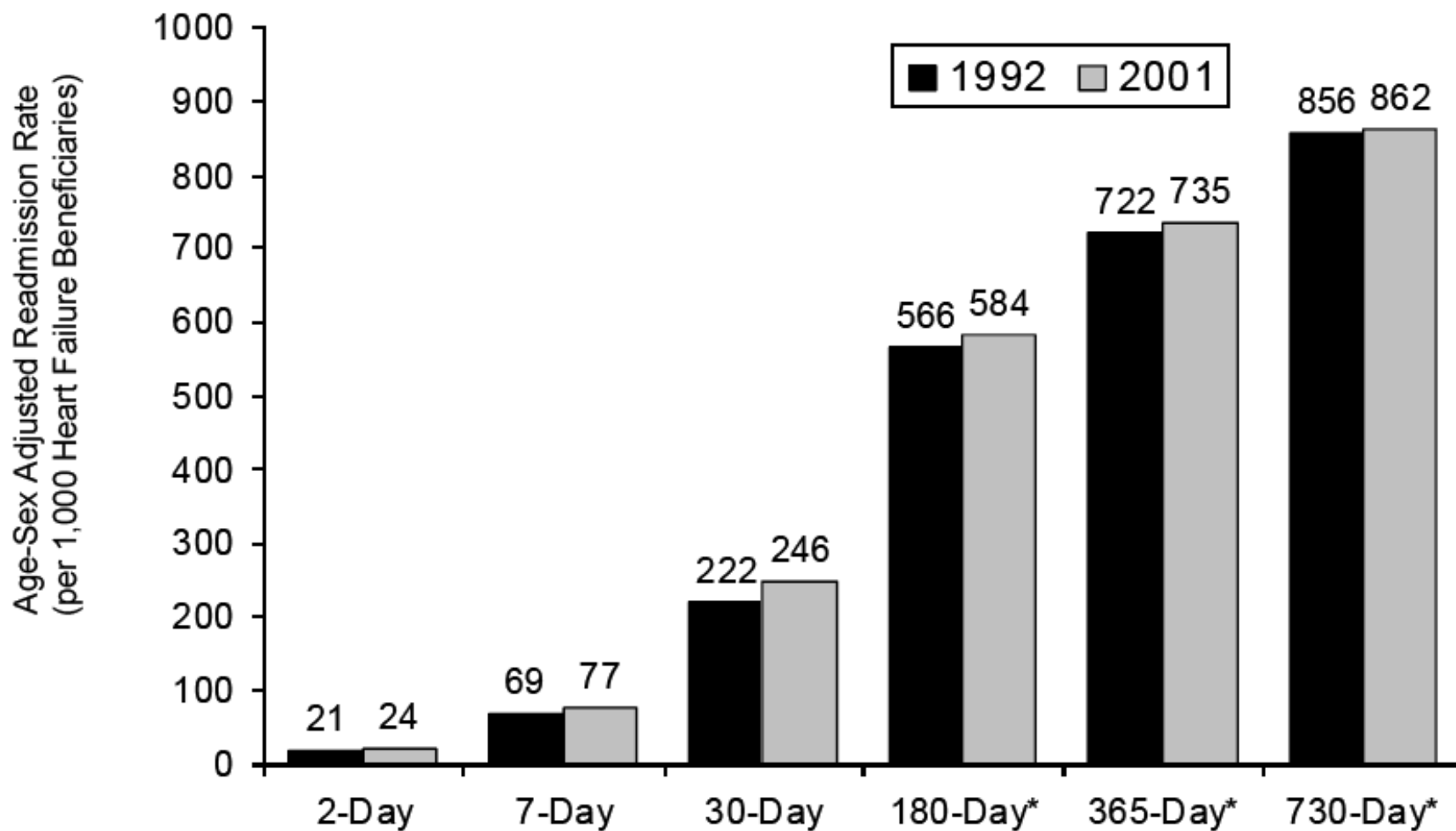
# Background

- Medicare readmission rates
- VA readmission rates
- VA 14 day follow-up rates
- Review of Institute for Healthcare Improvement (IHI) initiative
- Discussion

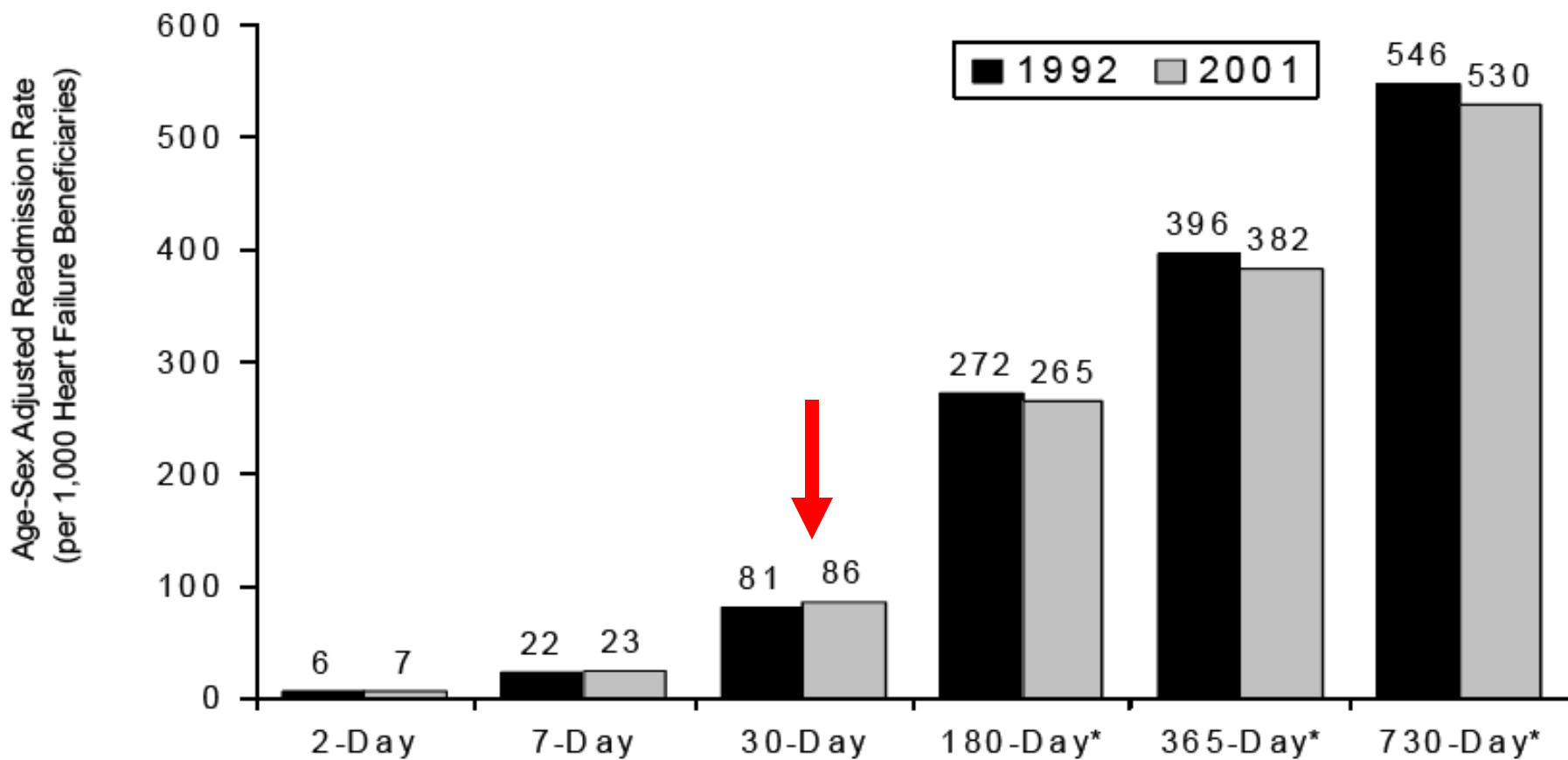
# Questions

- How can we increase early follow-up following discharge?
  - With and without an increase in resources?

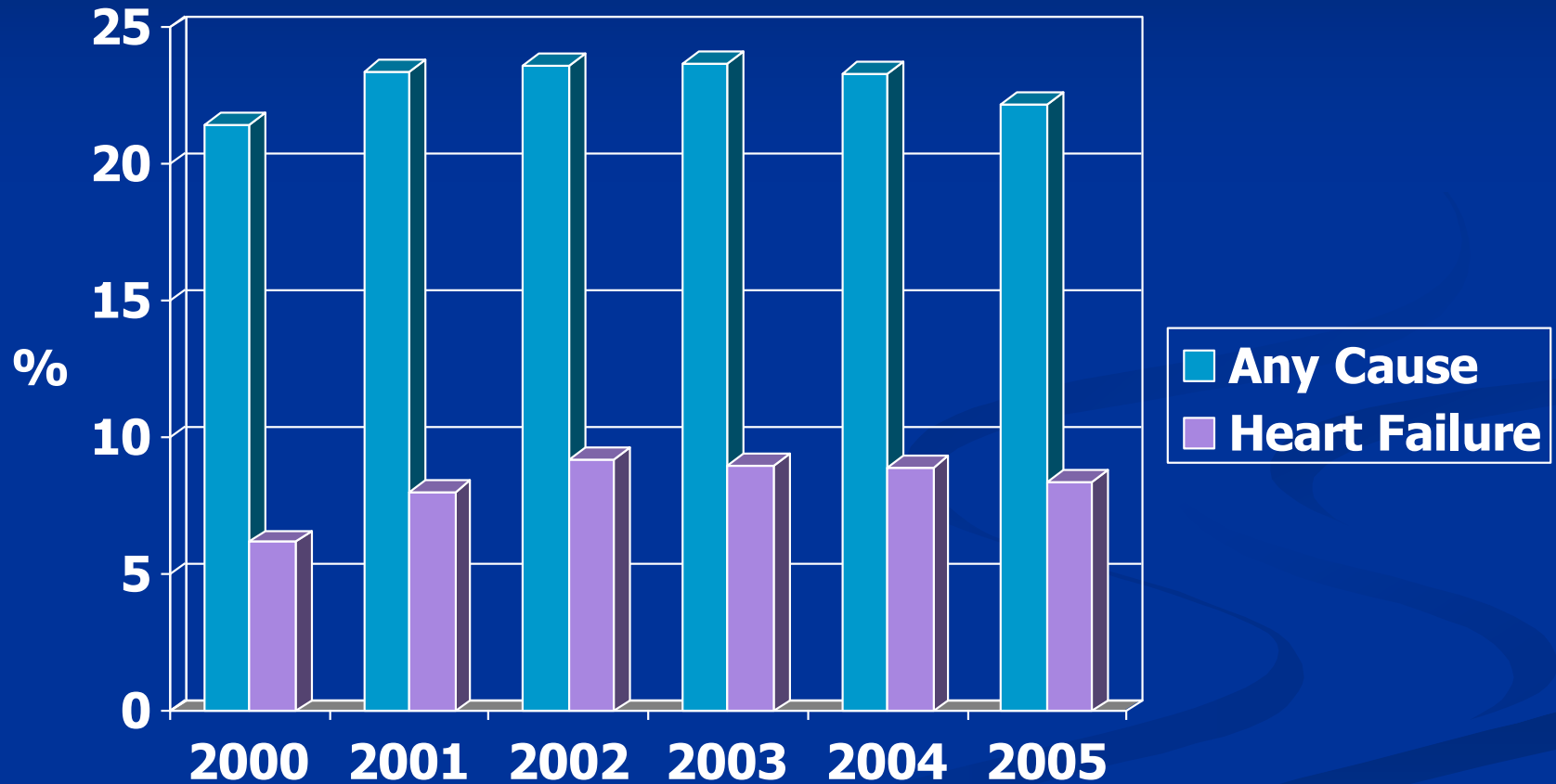
# All Cause Readmission: Medicare



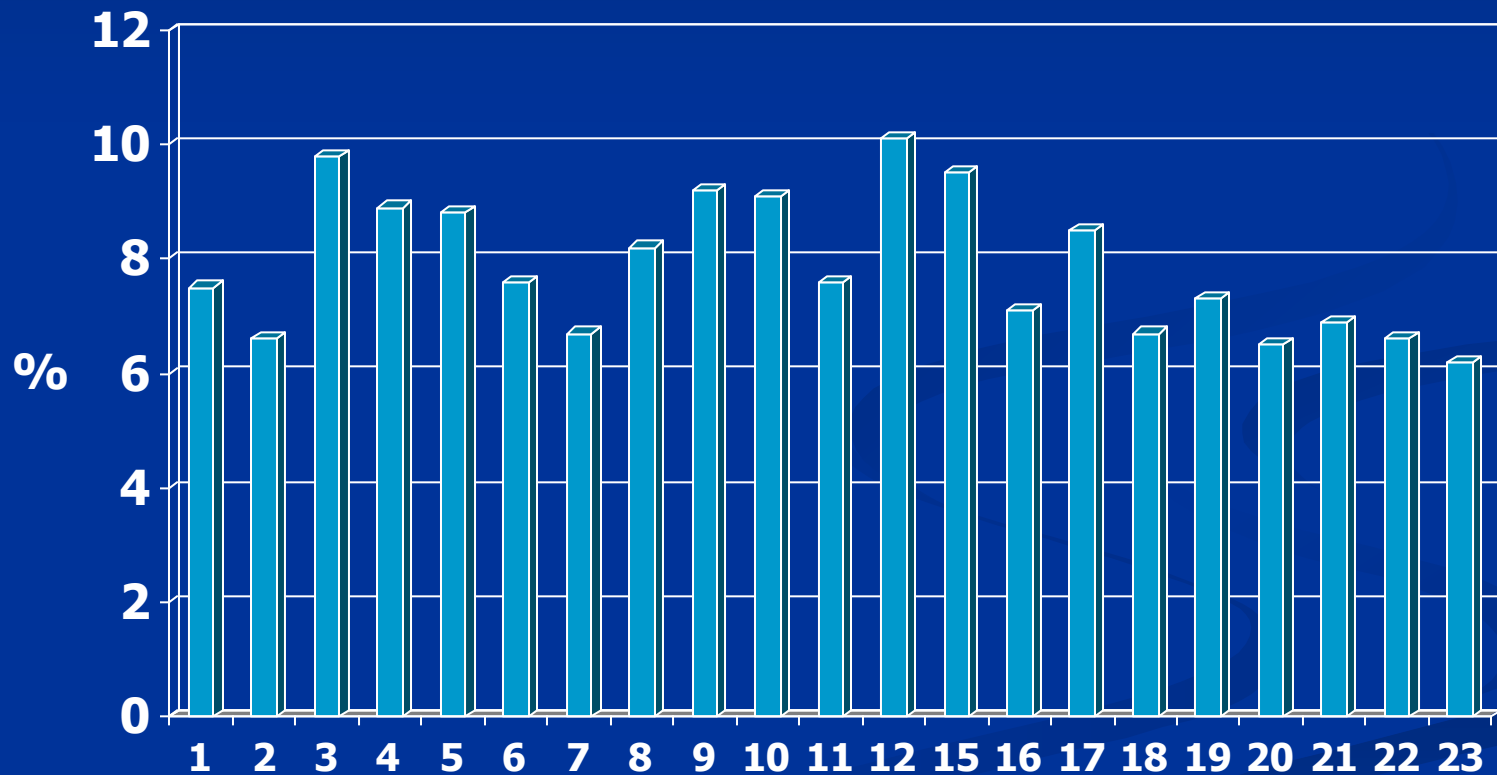
# HF Readmission Rates: Medicare



# Readmissions Following a Heart Failure Discharge



# VISN Level: 30 Day HF Readmission





PROTECTING

**5 Million**

*lives*

FROM HARM

IHL.org

# The Institute for Healthcare Improvement

- Many more patients are harmed than killed
  - 37 million hospitalizations/year in the US
  - 40-50 injuries/100 admissions
  - 15 million are harmed/year in US hospitals
    - 40,000 / day
- **Goal: Eliminate harm to 5 million patients over the next two years**

# IHI Definition of Medical Harm

Unintended physical injury resulting from or contributed to by medical care (including the absence of indicated medical treatment), that requires additional monitoring, treatment or hospitalization, or that results in death.

# IHI

## Save 5 Million Lives From Harm

- Prevent pressure ulcers
- Reduce MRSA
- Prevent harm from high-alert medications
- Reduce Surgical Complications
- **Deliver reliable evidence-based care for heart failure**
- Get boards on board

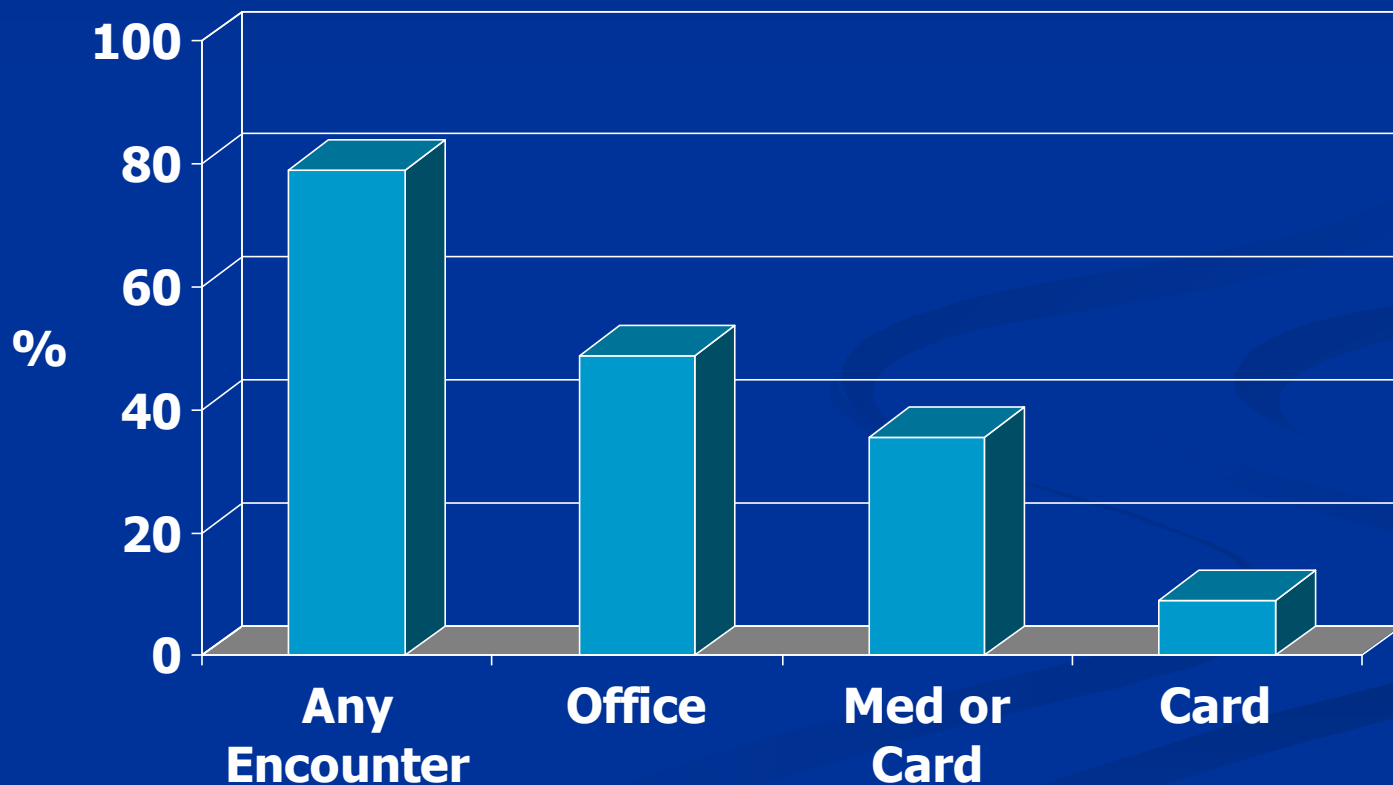
# IHI 5 Million Lives Campaign: Heart Failure

- Goal: Deliver reliable evidence-based care for congestive heart failure ... to reduce admissions.
  - Reduce the readmission rate by 50% by December 2008

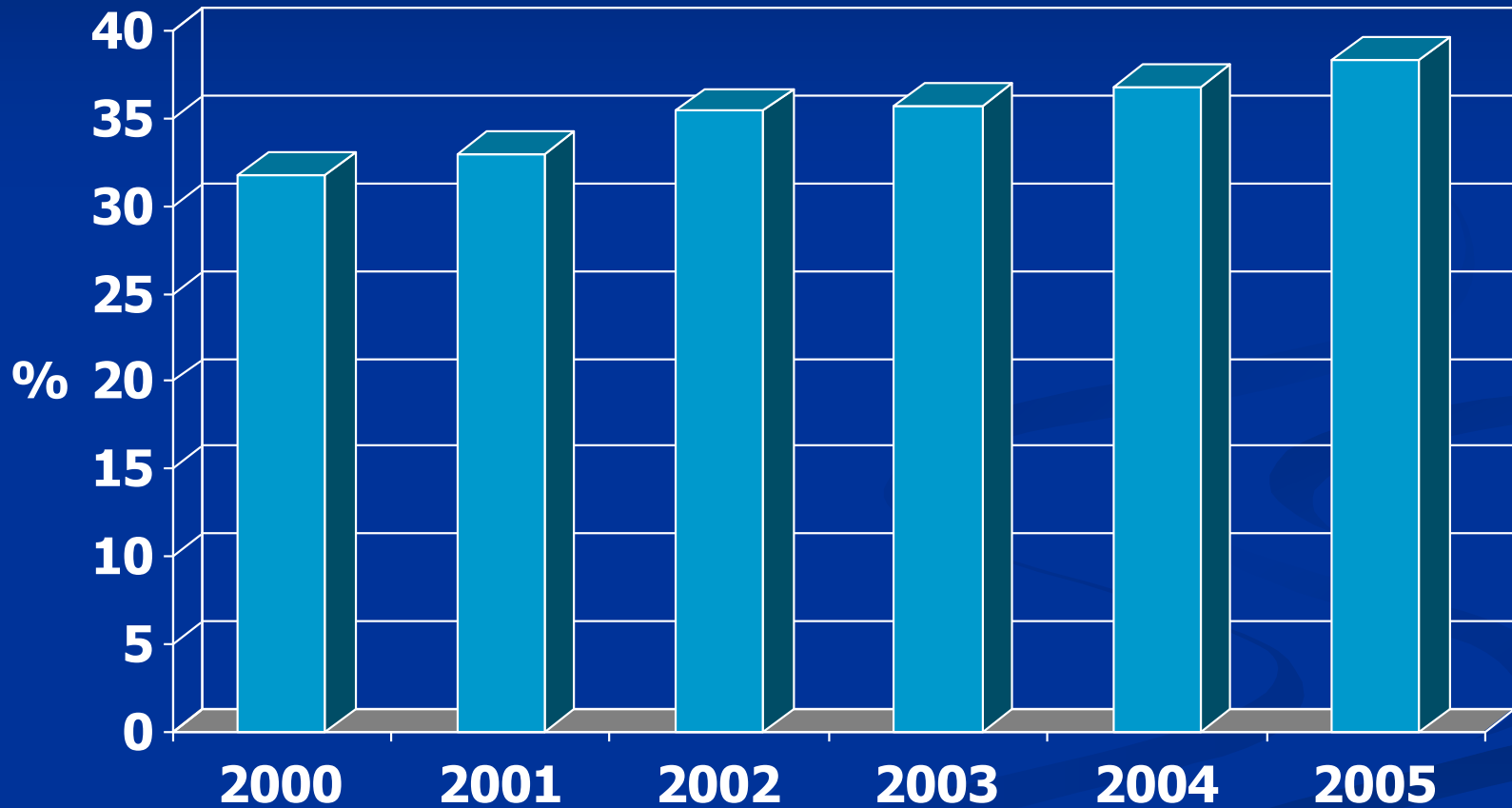
# Discharge Checklist

- Reconcile Medications
- Teach Back
- Follow up phone call in 48 hours
  - Medication check
- Physician visit
  - 1 week for average risk patients
  - 48 hours for high risk patients
- Case management for high risk patients

# 14 day Outpatient Encounters Following Discharge (1999-2005)

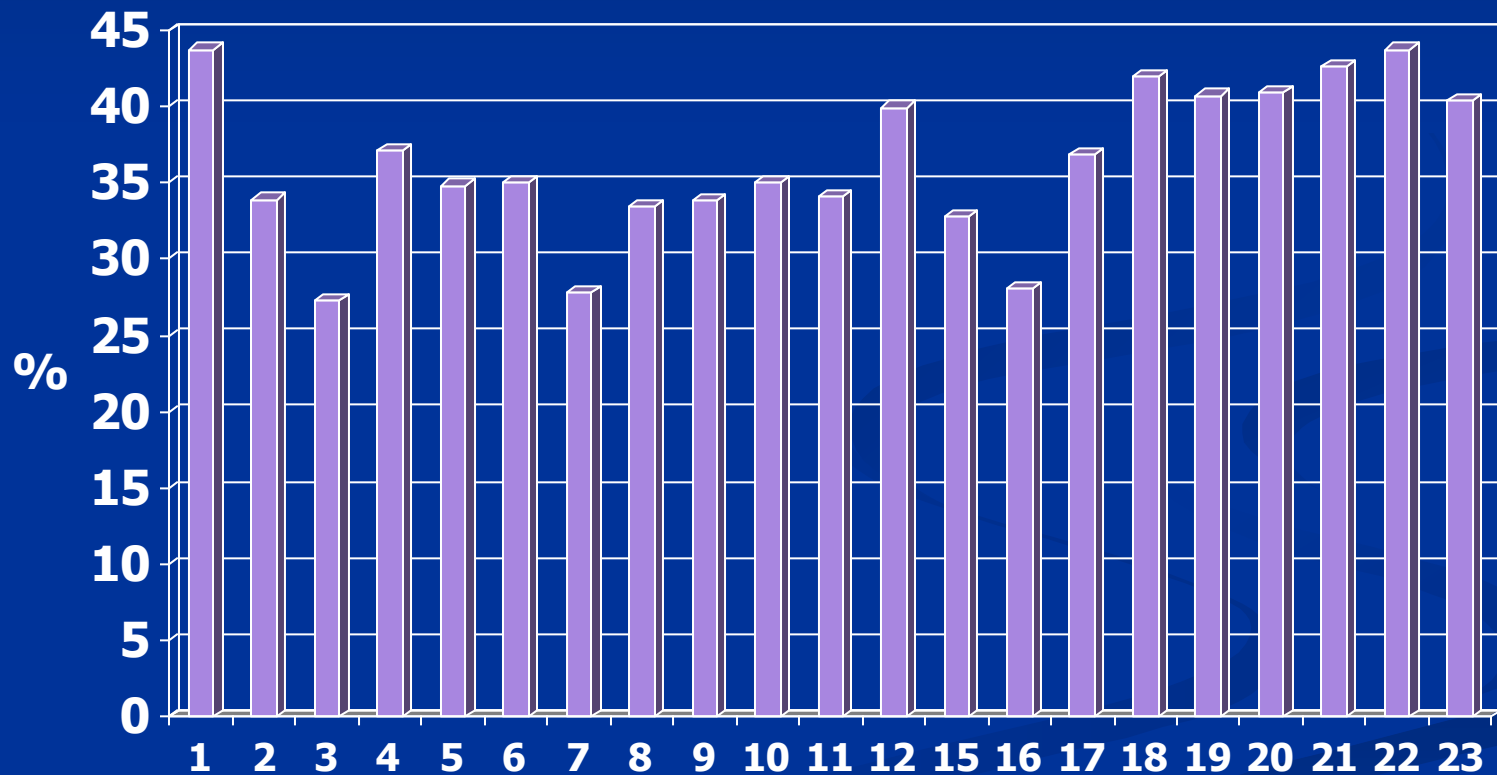


# Trends in 14 Day Follow up: Medicine or Card.





# VISN Level: 14 Day visits



# Questions

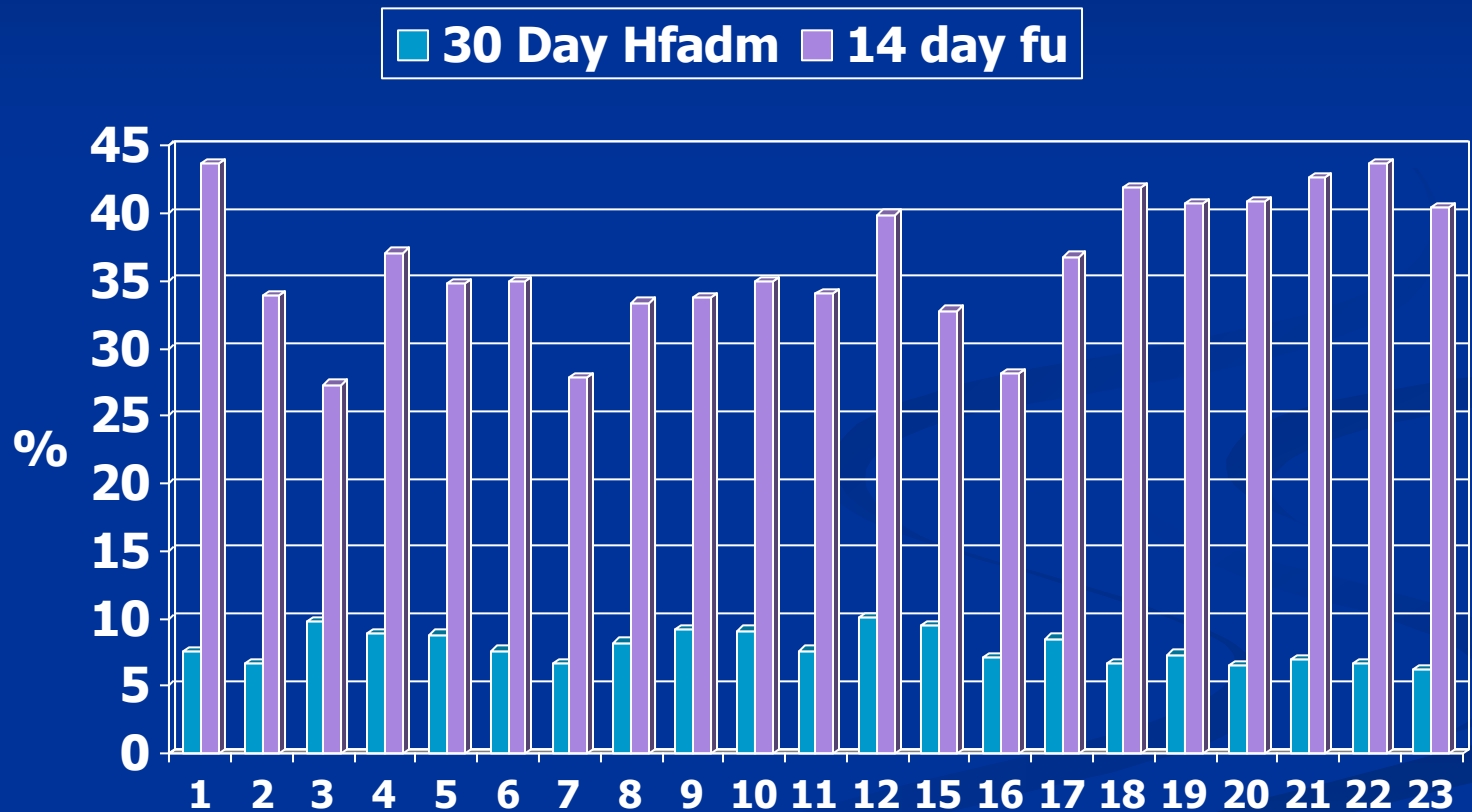
- How can we increase early follow-up following discharge?
  - With and without an increase in resources?

# Performance Measure?

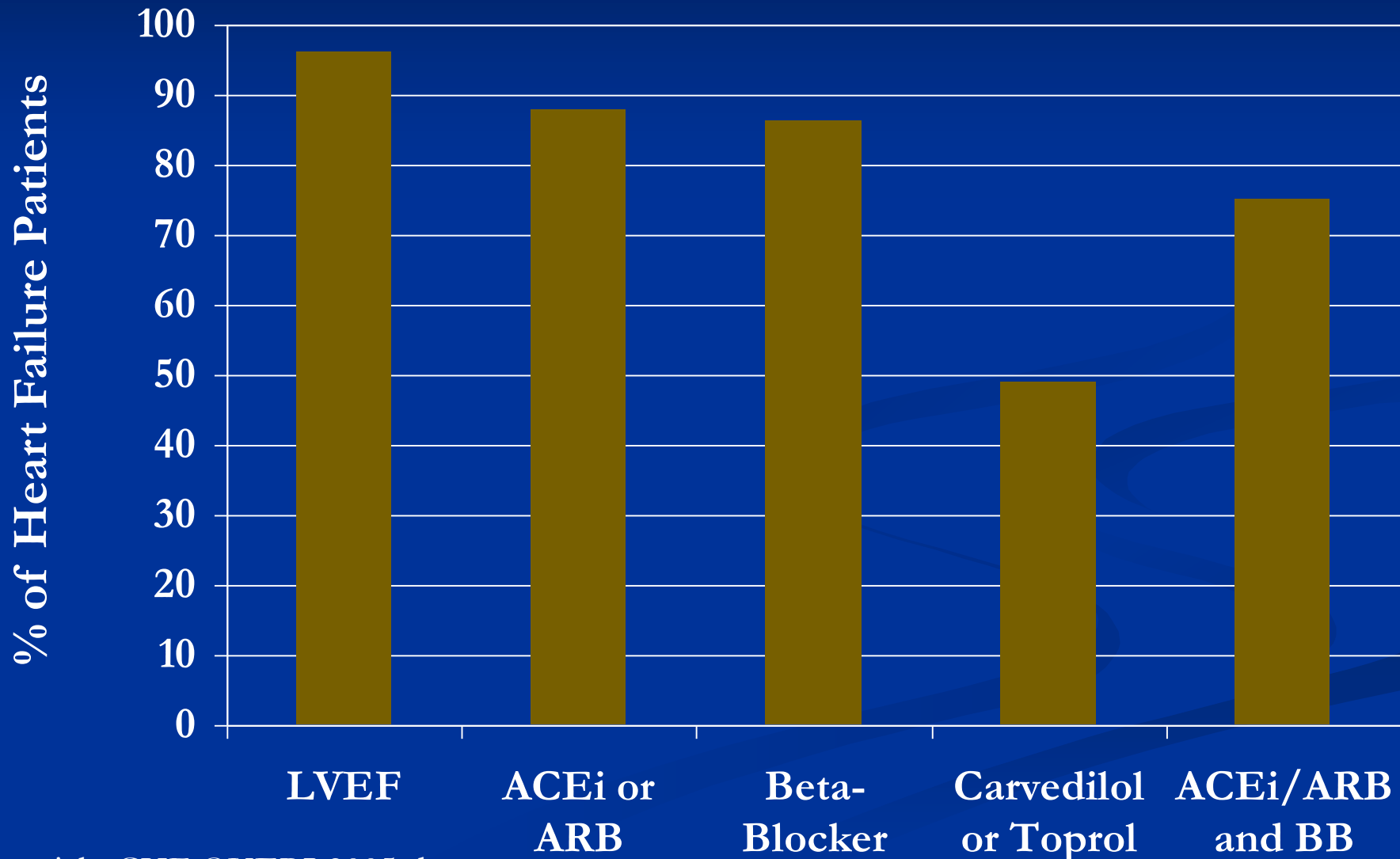
- Should we lobby for a performance measure for
  - Early follow-up post discharge?
  - Low readmission rates?
- It will get the Director's attention
  - Positive: Only way to get more resources / FTE.
  - Negative: May get asked to do more with the same funding.

# Discussion

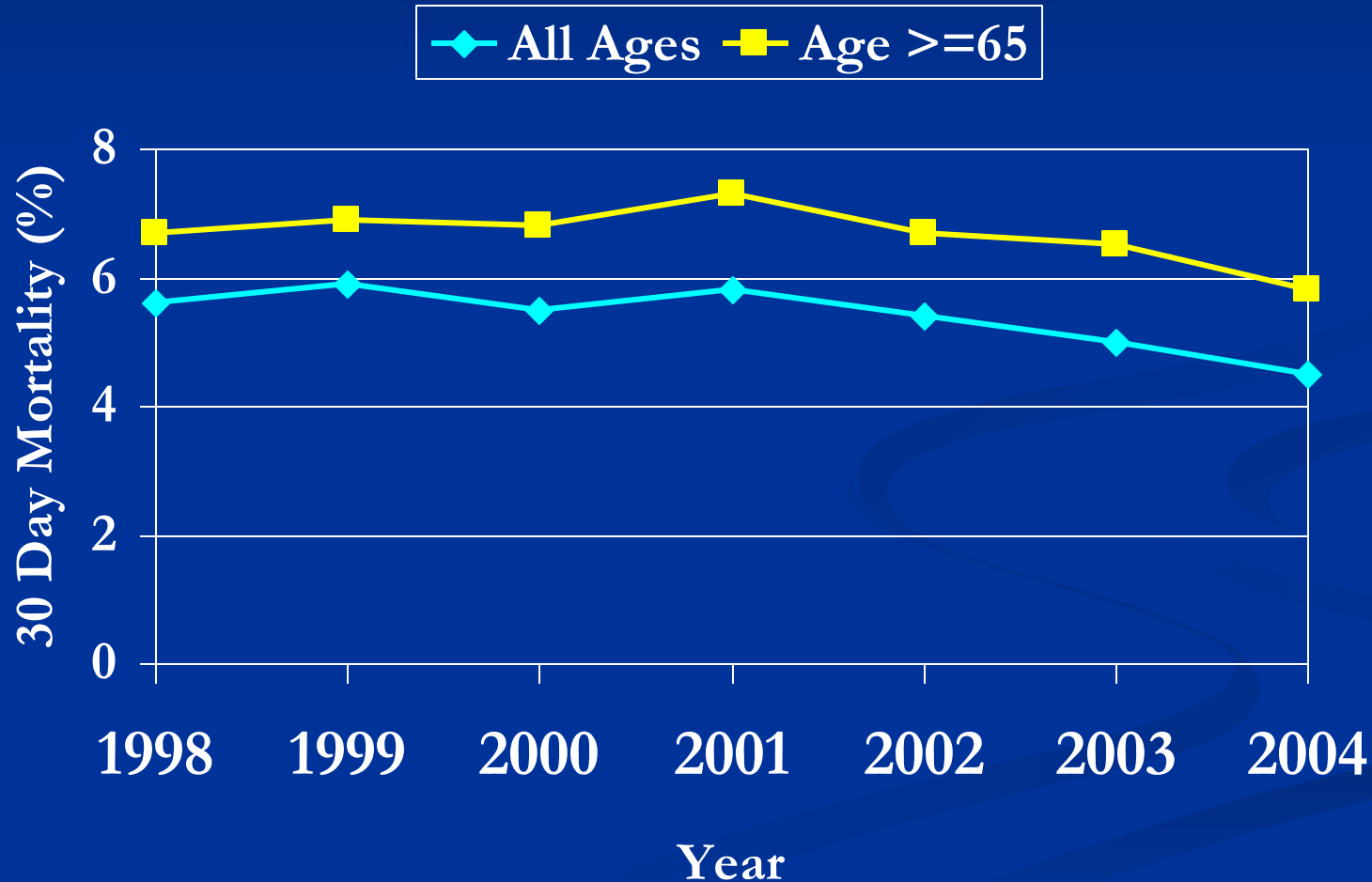
# VISN Level: 14 Day visits and 30 Day HF Readmission



# The VA Does Well on Medication Use for Heart Failure



# VA Heart Failure 30-Day Mortality



# Medicare Heart Failure Mortality

