

National Heart Failure
Training for Improved
Patient Care
N-HeFT

The Cardiovascular Continuum: Targeting Mechanisms and Mediators

Oxidative Stress/
Inflammation

Tissue Injury
(MI, Stroke)

Pathological
Remodeling

Target Organ
Damage

Vascular Disease

Target Organ
Dysfunction (CHF, Renal)

Vascular
Dysfunction

End-stage
Organ Failure

Risk Factors:
Diabetes
Hypertension

Death

Adapted from Dzau V, Braunwald E. *Am Heart J*. 1991.

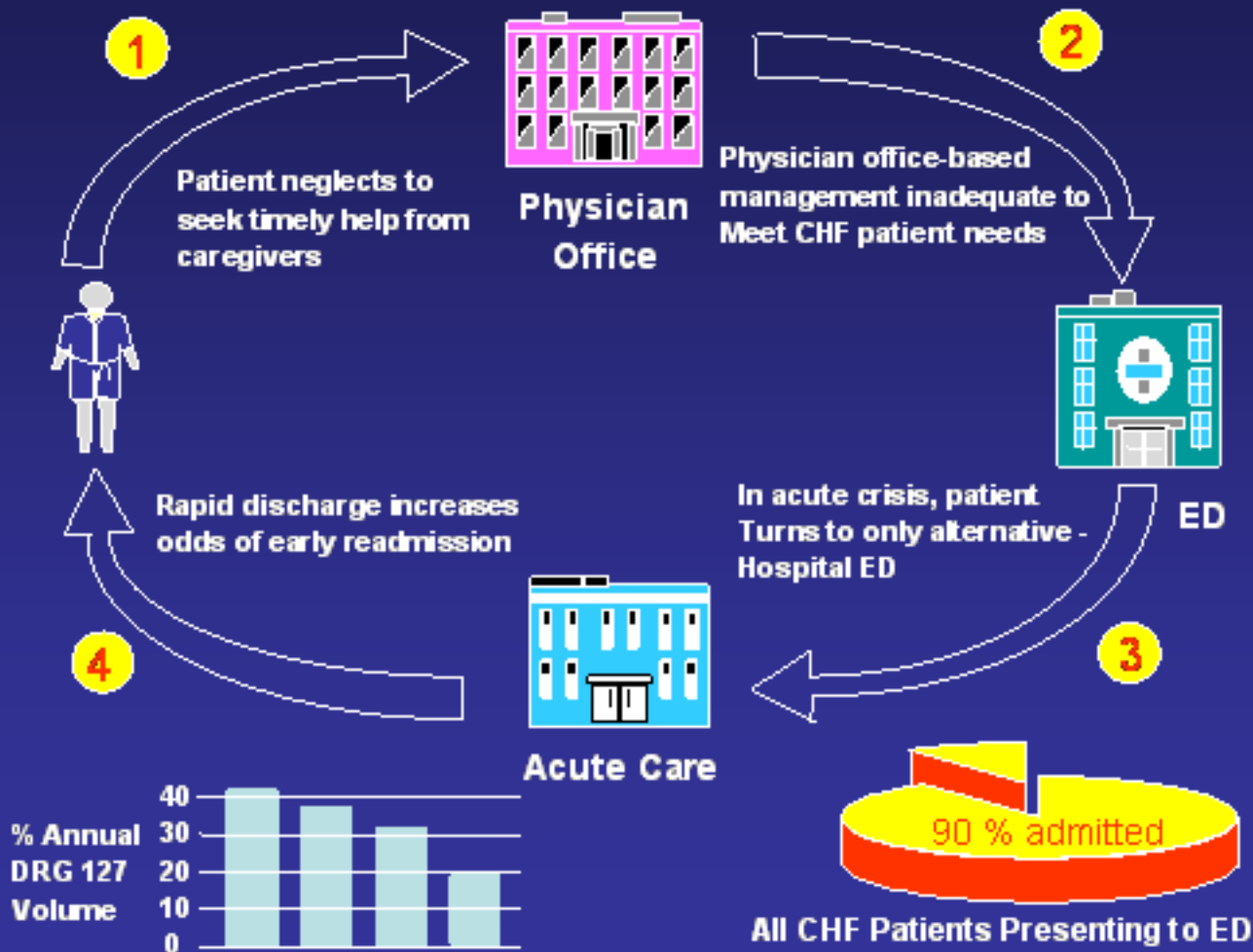
Heart Failure

- 5 million Americans with heart failure
- 550,000 new cases each year and growing
- Number one Medicare diagnosis
- Costs are spiraling
- Responsible for more hospitalizations than any other single diagnosis for the elderly
- Newer therapies known to improve patient outcomes widely underutilized
- Substantial and preventable morbidity and mortality

.

Vicious Cycle of Conventional Care

Conventional CHF Care



N-HeFT Bridges the GAP

The treatment gap continues to widen between evidence-based approaches to quality care and the reality of practice across the continuum of care, contributing to the increasing economic and social burden of this chronic illness.

N-HeFT Overview

- Began in 1994 at Temple University
- Sponsored and administered by Case Western Reserve University since 1999
- Customized accredited training
- 32 host sites: leading heart failure centers
- Application to practice
- Outcomes-driven mentoring

Accreditation

- **AMA CME**
- **Nursing CE**
- **Pharmacy CEU**
- **American Academy of
Family Physicians CME**

PURPOSE OF THE NETWORK

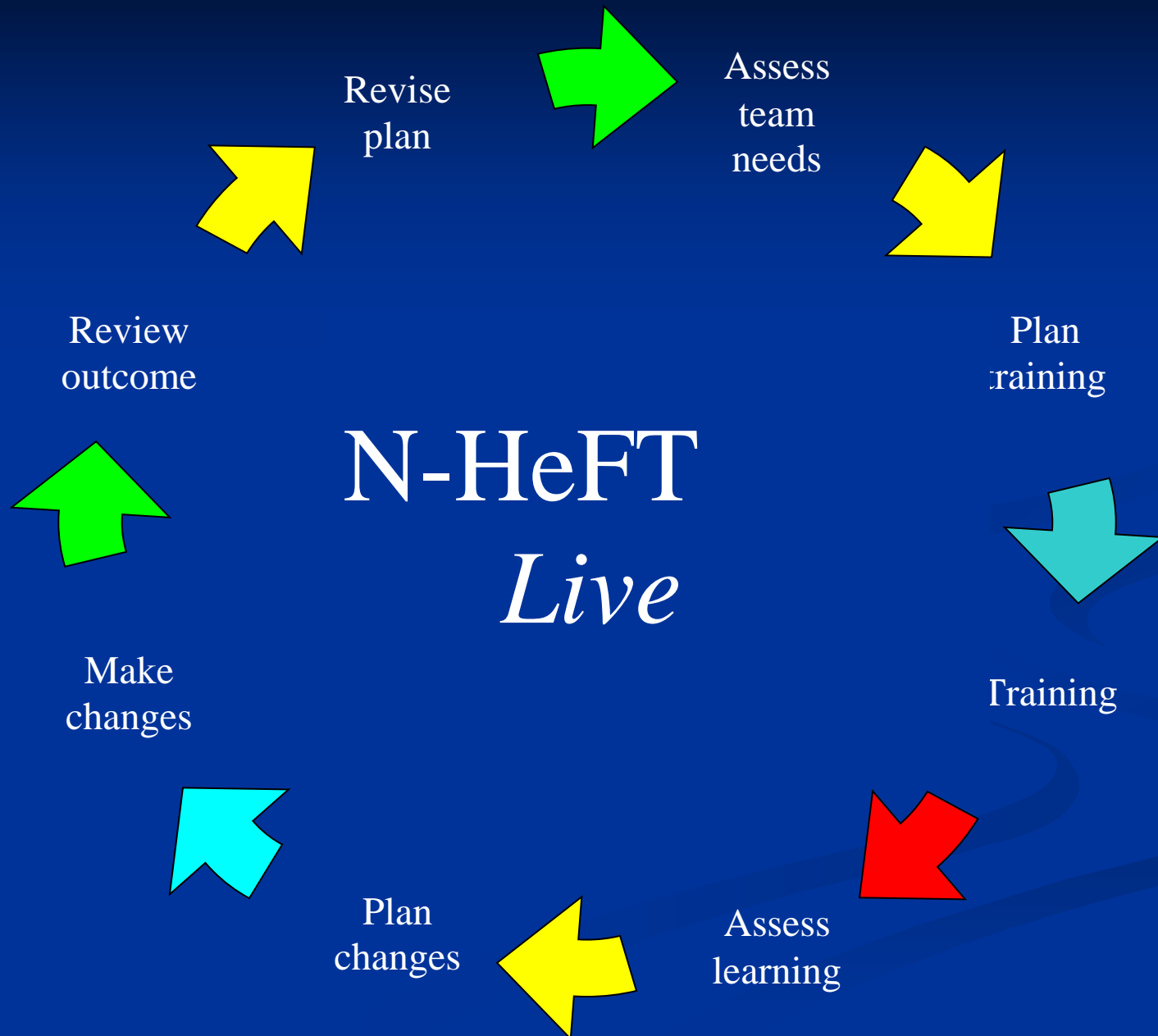
- Disseminate best practices to interdisciplinary medical teams who are eager to learn and enhance their care for HF patients
- Continuously improve the quality of the program as an educational delivery system

DESIRED OUTCOMES

- **Medical teams identify up to 3 changes they will make to improve patient care.**
- **They rank their level of commitment to implementing identified changes.**
- **Teams sign a “Commitment to Change Contract” and submit to N-HeFT for follow up.**

Outcomes Follow up

- **3 mentoring opportunities for medical teams up to 6 months**
 - **Review “Commitment to Change Contract”**
 - **Discuss approaches to improve quality of care**



N-HeFT
Live

Assess
team
needs

Plan
training

Training

Assess
learning

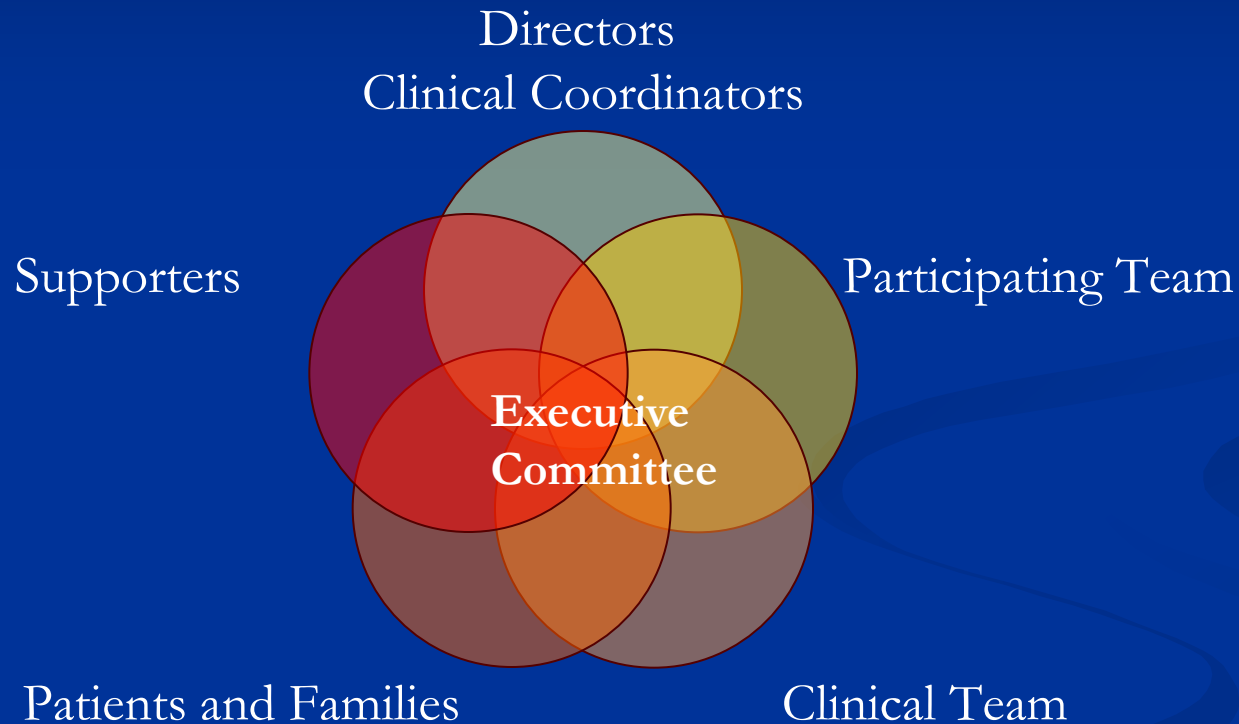
Plan
changes

Make
changes

Review
outcome

Revise
plan

Organizational Structure



Best Practice at All Points of Care



N-HeFT *Online*

Web site www.nheft.org

- Online Curriculum
 - Cardiology Core
 - Primary Care Core
 - Allied Health Core
 - Electives
- Faculty
 - Standard curriculum
 - Resources
 - Tools



CASE

CASE WESTERN RESERVE UNIVERSITY
SCHOOL OF MEDICINE

National Heart Failure Training Program

Today is March 20, 2007

[Home](#)

[About Program](#)

[Host Sites](#)

[How To Apply](#)

[N-HeFT ONLINE](#)

[N-HeFT News](#)

[N-HeFT Collaborations](#)

[Acknowledgements](#)

[Contact Us](#)

[Help](#)

Welcome to N-HeFT for Medical Professionals

We have recently redesigned our program for busy health care professionals challenged with the information explosion and increasing demands on limited resources, especially time. You now have access to training by our national network of heart failure experts through **N-HeFT LIVE** and **N-HeFT ONLINE**.

N-HeFT LIVE offers a one or two day training workshop for individual medical teams at one of 32 national sites led by some of the country's top heart failure experts. A full day of interactive sessions provides intensive small-group training on current optimal approaches to heart patient care at top tier heart failure clinics. There is no cost except travel and lodging.

In addition to **N-HeFT LIVE** we are excited to announce **N-HeFT ONLINE**. Presentations from our live workshops are now available **online** for medical professionals interested in learning how to improve the management of heart failure care for your patients. We will soon make these available for continuing education. Check back with us frequently for updates and new topics of interest.

NEW! **N-HeFT ONLINE** currently offers selected presentations from the following events:
Click on each to learn more.

- N-HeFT Primary Care Core
- The 5th Annual ABC's of Heart Failure



Cardiology



Primary Care



Allied Health Care



Training Instructions
and Materials

Monthly Feature

Pulmonary Arterial
Hypertension

- [Diagnosis of PAH](#)
- [Treatment of PAH](#)



Srinivas Murali, MD

Director, Division of
Cardiovascular Medicine



CASE

CASE WESTERN RESERVE UNIVERSITY
SCHOOL OF MEDICINE

National Heart Failure Training Program

Today is March 20, 2007

- Home
- About Program
- Host Sites
- How To Apply
- N-HeFT ONLINE

N-HeFT News

- Conferences
- January 2007
- September 2006
- February 2006
- October 2005
- July 2005

- N-HeFT Collaborations
- Acknowledgements
- Contact Us
- Help

N-HeFT News

Register Today!
6th Annual ABC's of Heart Failure: From Diagnosis to Prognosis
 February 24, 2007



This course is designed for physicians and other healthcare professionals who manage patients with heart failure. Utilizing didactic lectures and small group case-based workshops, this program will provide an overview of approaches to heart failure management based on recent research advances. It will also examine issues confronting practicing physicians who manage patients with suspected or confirmed heart failure by providing cases that will help them apply evidence-based best-practice in their own clinical decision making.

[Click here for more information](#)

[Click here to register online today!](#)

Save the Date
Heart Failure: The Path from Prevention to Recovery
 March 30 & 31, 2007



Heart Failure is the only cardiovascular disease on the rise. Currently, heart failure affects over 5 million persons, and expected to increase to 10 million by 2037. Informed clinicians can reduce heart failure mortality



Cardiology



Primary Care



Allied Health Care



Training Instructions
and Materials



CASE

CASE WESTERN RESERVE UNIVERSITY
SCHOOL OF MEDICINE

National Heart Failure Training Program

Today is March 20, 2007

[Home](#)

About Program

- Program Highlights
- Annual Reports
- Network Members
- Mission/Purpose
- Outcomes
- Audience/Format
- Topics & Objectives
- Accreditation

[Host Sites](#)

[How To Apply](#)

[N-HeFT ONLINE](#)

[N-HeFT News](#)

[N-HeFT Collaborations](#)

[Acknowledgements](#)

[Contact Us](#)

[Help](#)

About The Program

The N-HeFT Network encompasses medical teams of heart failure experts who are dedicated to doing "the right thing for the right reason." Thirty-two host sites from all parts of the country invite medical professionals to visit their heart failure clinic to spend one or two days in interactive sessions at their sites. N-HeFT is sponsored and administered by Case Western Reserve University (CASE) for continuing medical education credit.

PROGRAM HIGHLIGHTS

- Continuing education credits for physicians, pharmacists, and nurses
- Intensive small-group training focusing on your medical team's needs
- Current optimal approaches to heart patient care
- First hand exposure to the operations of a top tier heart failure clinic
- Convenience-matching the time and place best for your team
- Affordable: no cost except travel and lodging
- Ongoing support-Three follow up mentoring sessions to assist in implementing your goals for practice improvement
- Resources and tools-newly published guidelines, patient education materials, references, and quality tools to use in your practice



Cardiology



Primary Care



Allied Health Care



Training Instructions
and Materials

Standardization of Training

■ Curriculum

- Developed and updated by network expert authors
- Password-protected and posted on web for faculty
- Accredited for physicians, nurses, pharmacists

■ Training Processes

- Thorough application process
- Coordinated through Case Western Reserve University
- Standardized forms
- Follow up mentoring

Louis B. Stokes VA Medical Center

- On site at the Lorain C-BOC
- Staff: MD's, Pharm D, RN, PA, MBA
- Feb 6, 7
- Morning Didactic Primary Care Core
- Afternoon clinic with Dr. Ileana Pina and participants" patients-Faculty-guided visit

Visit Snapshot 07/05-present

- 95 trainings completed
- 11 applications pending
- 600+ participants completed training
- 64 Primary Care
- 31 Cardiology

Collaborations

- **Think Tank for Cardiovascular Research in Women**
- **CHP: HF Advocate**
- **Visiting Nurse Association**
- **Ohio Coalition of HF**
- **Hospice of the Western Reserve**

Think Tank

Need

- Public health concerns resulting from disparities in management of cardiovascular diseases and related outcomes in women
- **Goal**
 - **To create multi-center prospective studies for women with cardiovascular diseases**

Think Tank Purpose

- Provide an interdisciplinary forum to discuss promising and novel approaches to management of cardiac disease and its risk factors
- Identify promising new directions in related research

Think Tank

■ Participation:

- National Heart Lung Blood Institute (NHLBI), Food and Drug Administration (FDA, ODE), Department of Health and Human Services (DHHS).

■ Meetings:

- 2/16/06: Bethesda Maryland; 7/13/06: Rockville, MD; 11/11/06 Chicago, 3/24/07: New Orleans, 9/07: Washington

■ Supporters:

- Office of Women's Health (US Public Health Service), N-HeFT

Collaboration

- VNA
- N-HeFT
- 7 home care agencies in Ohio
- Telemonitor and outcomes research
- Standard education for all team members

Chronic Care Model

Community

Resources and
Policies

Health System

Health Care Organization

Self-
Management
Support

Delivery
System
Design

Decision
Support

Clinical
Information
Systems

Informed
Activated
patient

Productive
Interactions

Prepared
Practice
Team

Improved Outcomes

Ohio Heart Failure Coalition

- Emerged from the “Partnership for Quality” initiated within the Guidelines Assisting Practice Agency for Health Quality Research Grant started in 2004.
- Started in 2005
- Special projects

Mission

- To achieve transformational change across the continuum of heart failure care through innovative collaboration, dedicated to sharing best practices and resources

Goals

- Increase awareness and knowledge of heart failure in Ohioans
- Improve health-related quality of life for people living with heart failure
- Improve timeliness, efficiency, and effectiveness of heart failure care

N-HeFT Future Directions

- **Expand bridge between research and practice through education**
- **Outcomes research**
- **Develop new programs based on identified needs: ie-Nursing home, skilled nursing facility, hospice, emergency dept.**
- **Develop new modules: diabetes, anemia**
- **Develop CME for online**
- **Expand collaborative network**