

VA Trends in Heart Failure Care and Outcome

Paul Heidenreich
CHF QUERI

5/10/2010

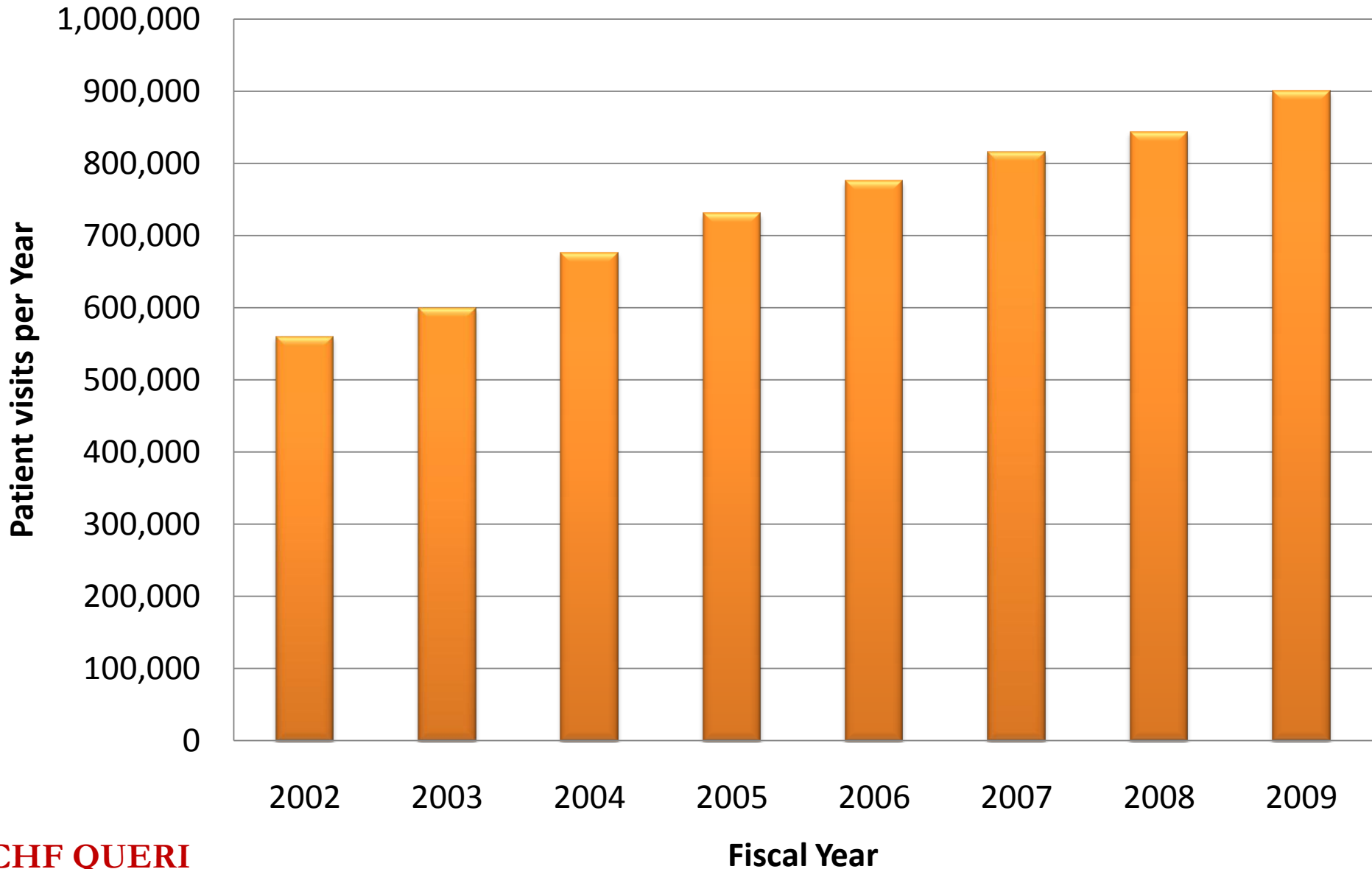
I.2 Background on Heart Failure

Population Group	Prevalence	Incidence	Mortality	Hospital Discharges	Cost
Total population	5,300,000	660,000	284,965	1,084,000	\$34.8 billion

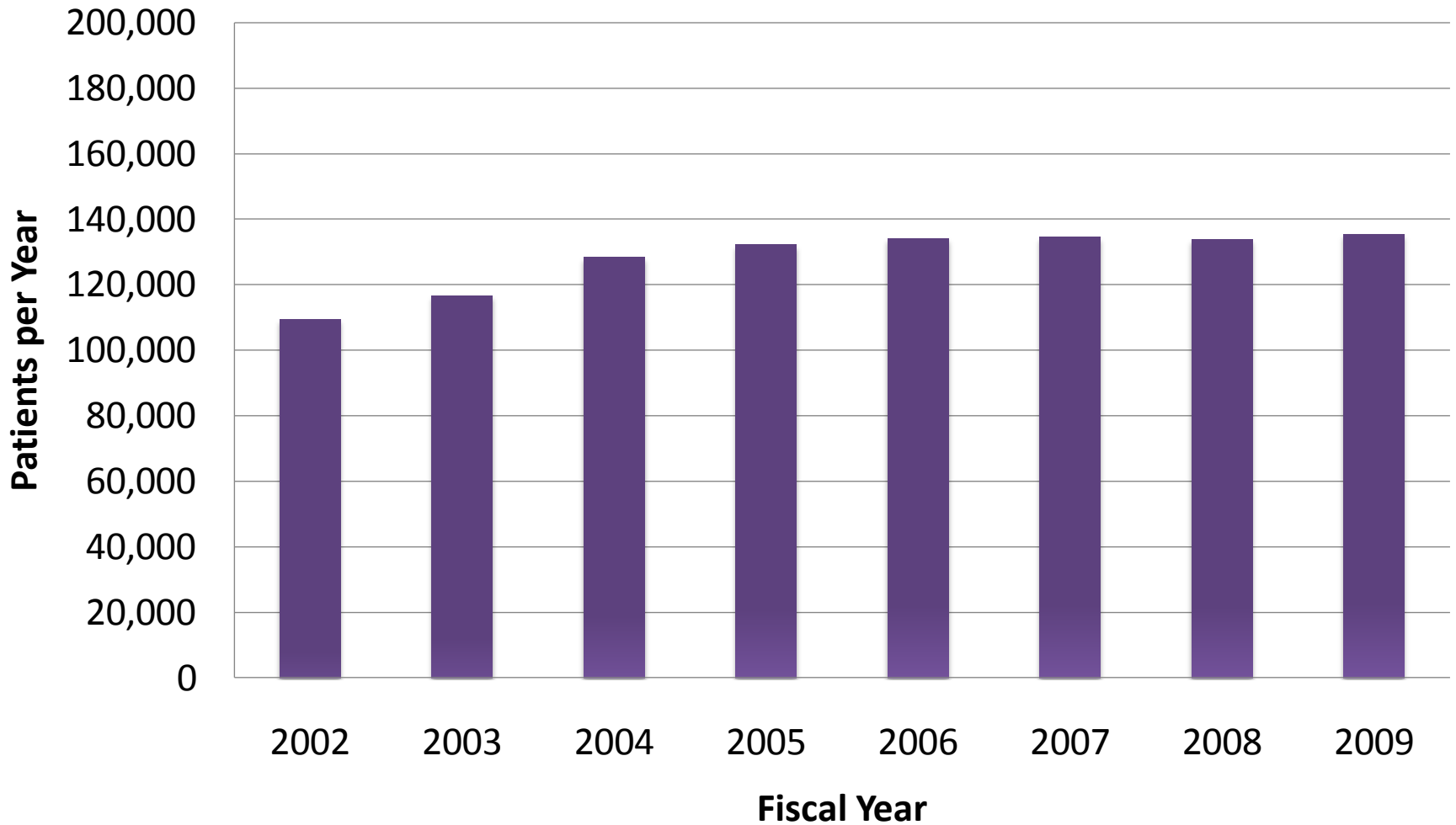
¹American Heart Association. *2008 Heart and Stroke Statistical Update*. Dallas, TX: American Heart Association; 2008.

²Hunt SA et al. ACC/AHA guidelines for the evaluation and management of chronic heart failure in the adult. 2001.

Increasing VA Burden: Outpatient Encounters for Heart Failure

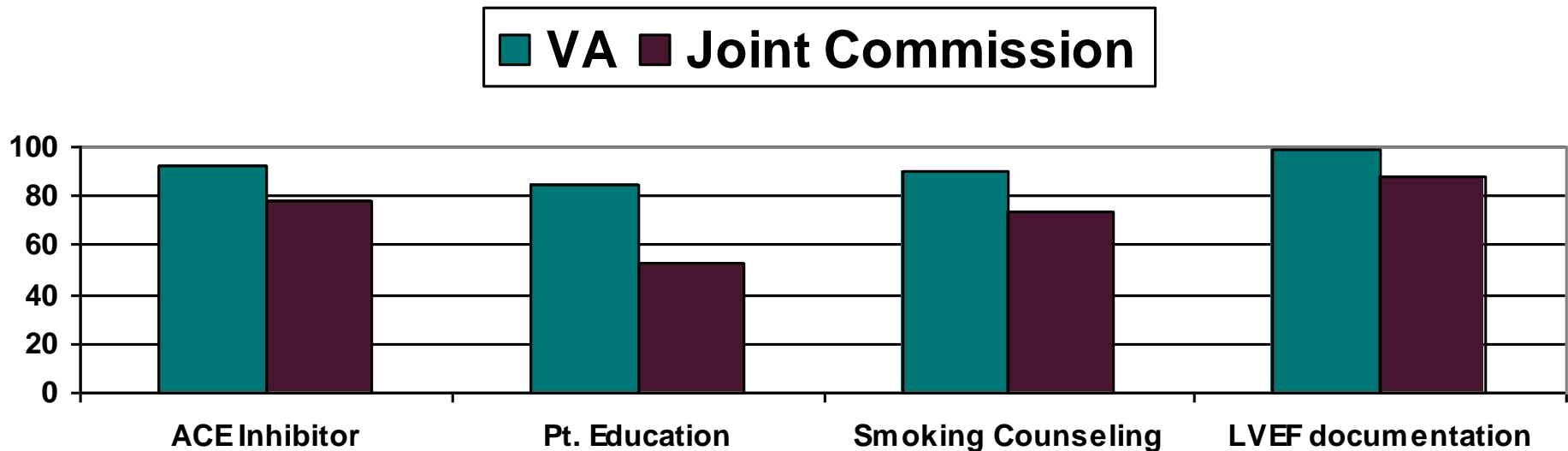


Stable Number of Veteran Outpatients with Heart Failure

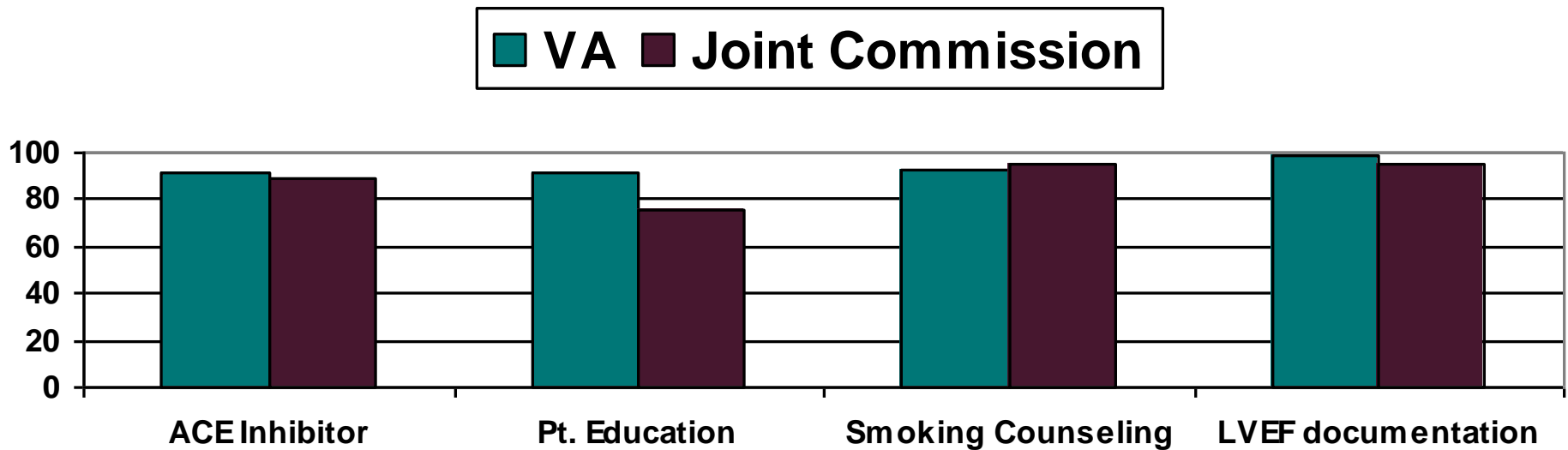


I.4 Current Practice and Quality/Outcomes Gaps

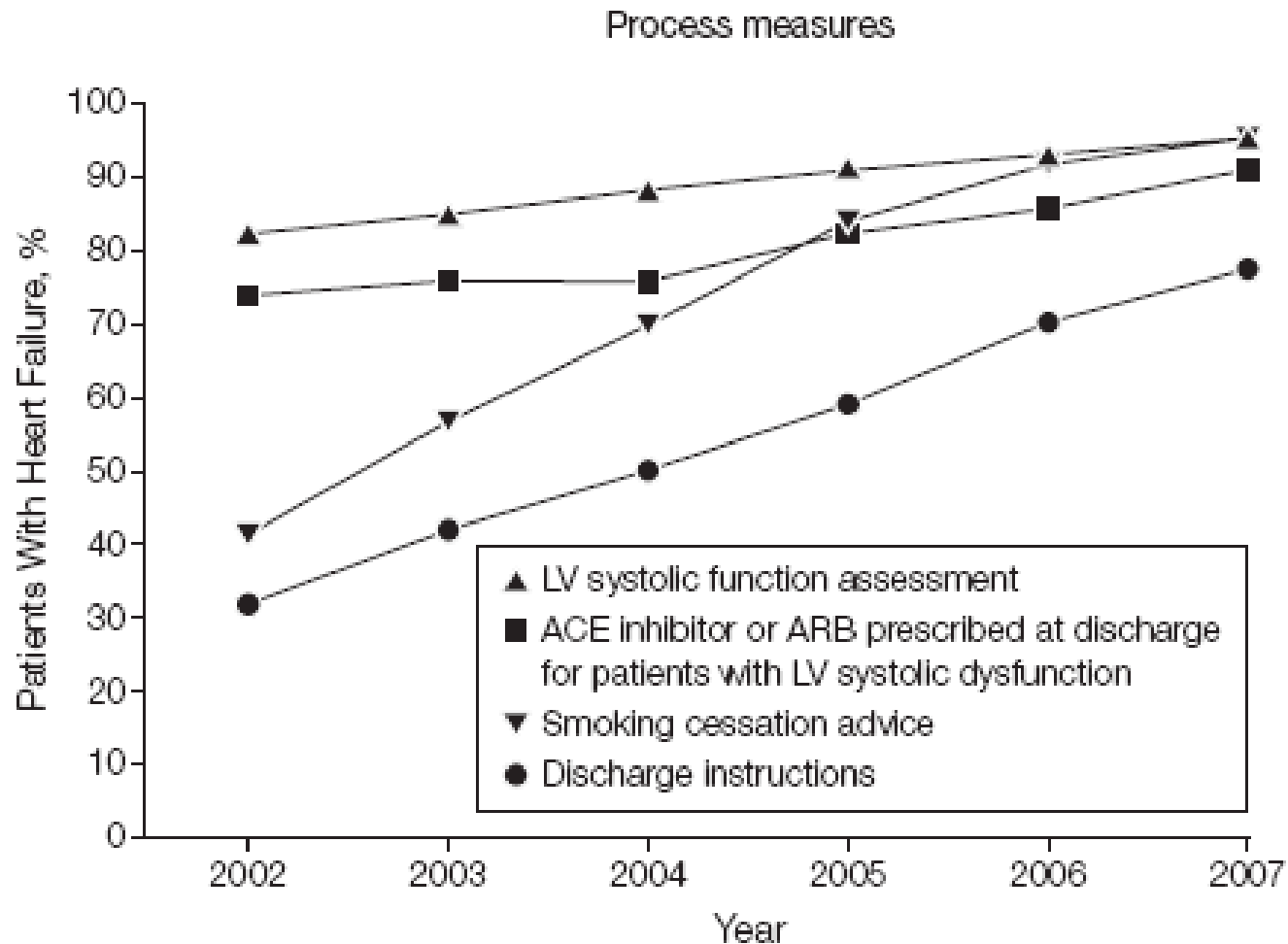
2005 Performance data for VA and the Non-VA (Joint Commission mean) for heart failure mission critical measures.



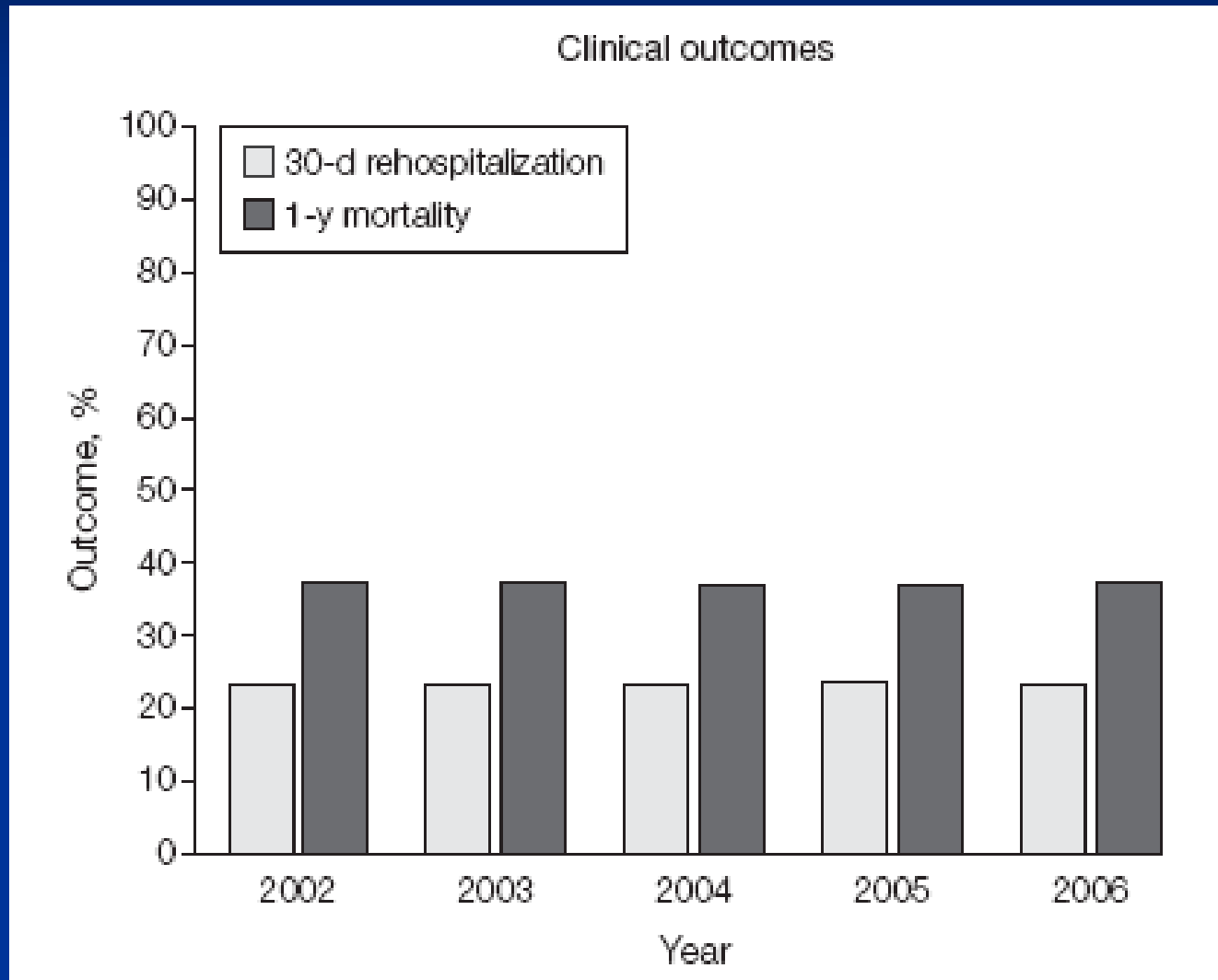
2007 Performance data for VA and the Non-VA (Joint Commission mean) for heart failure mission critical measures.



Improvement in Medicare Process of Care

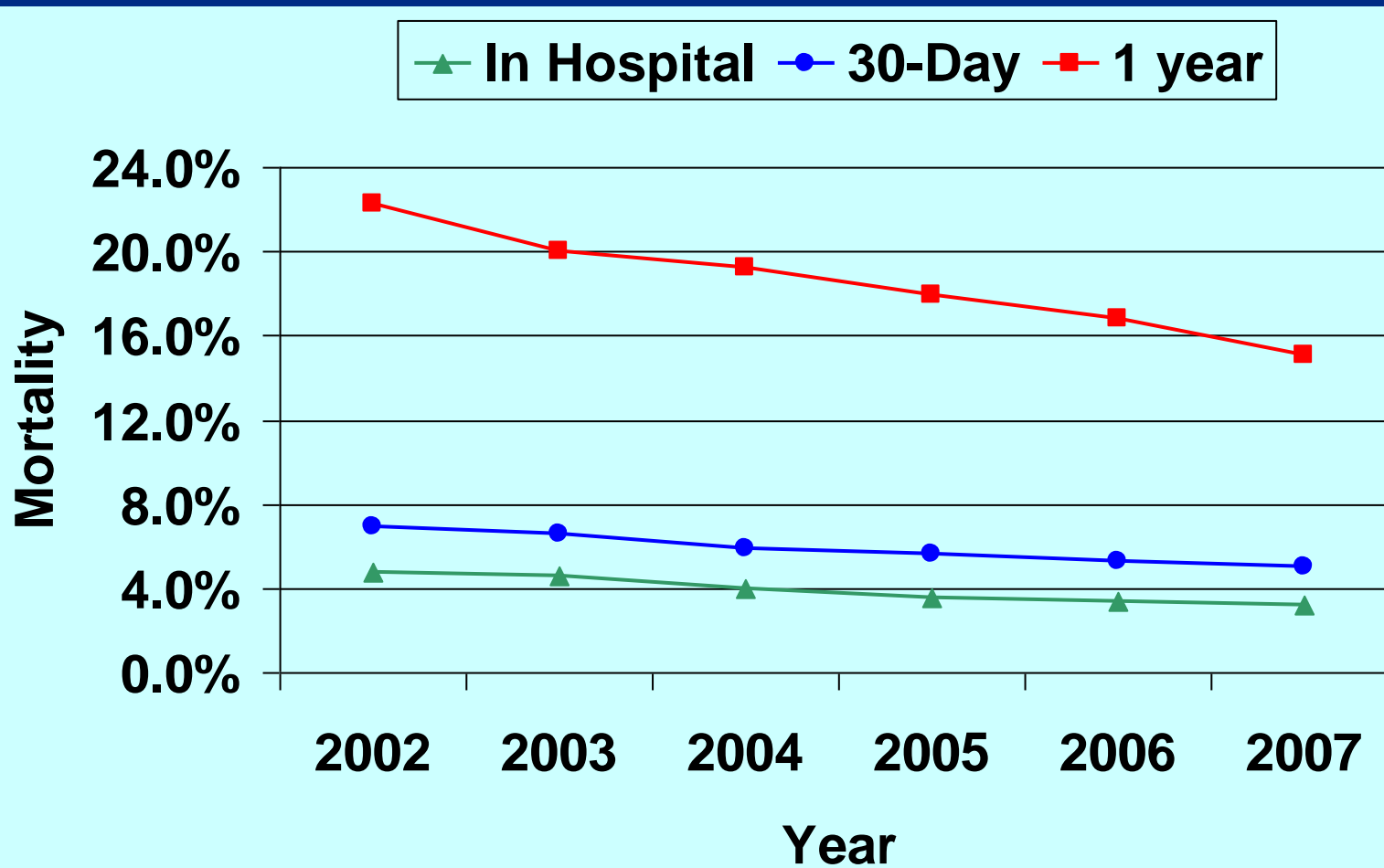


Little Change in Medicare Outcomes

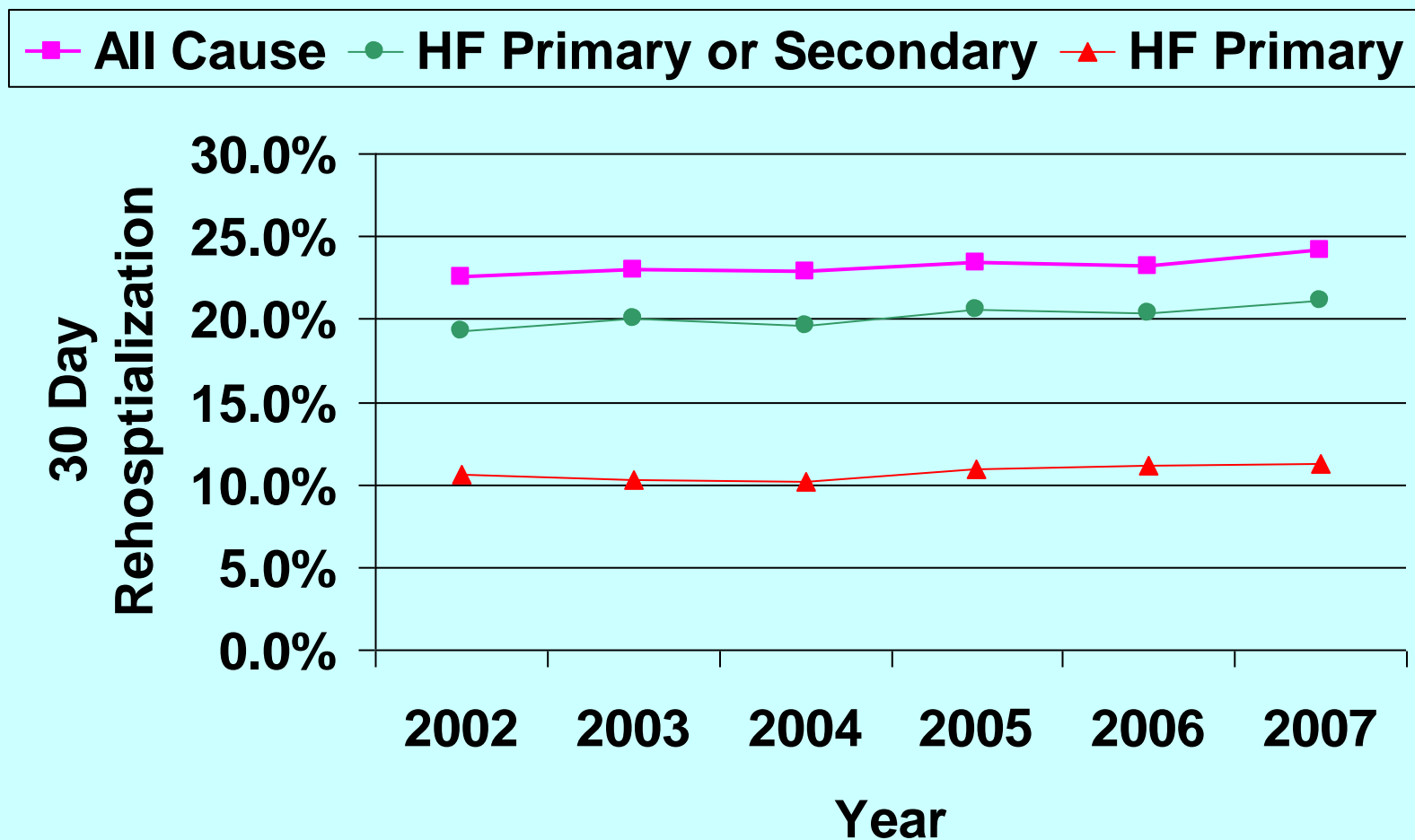


I.3 Treatment Evidence Base

Trends in Mortality



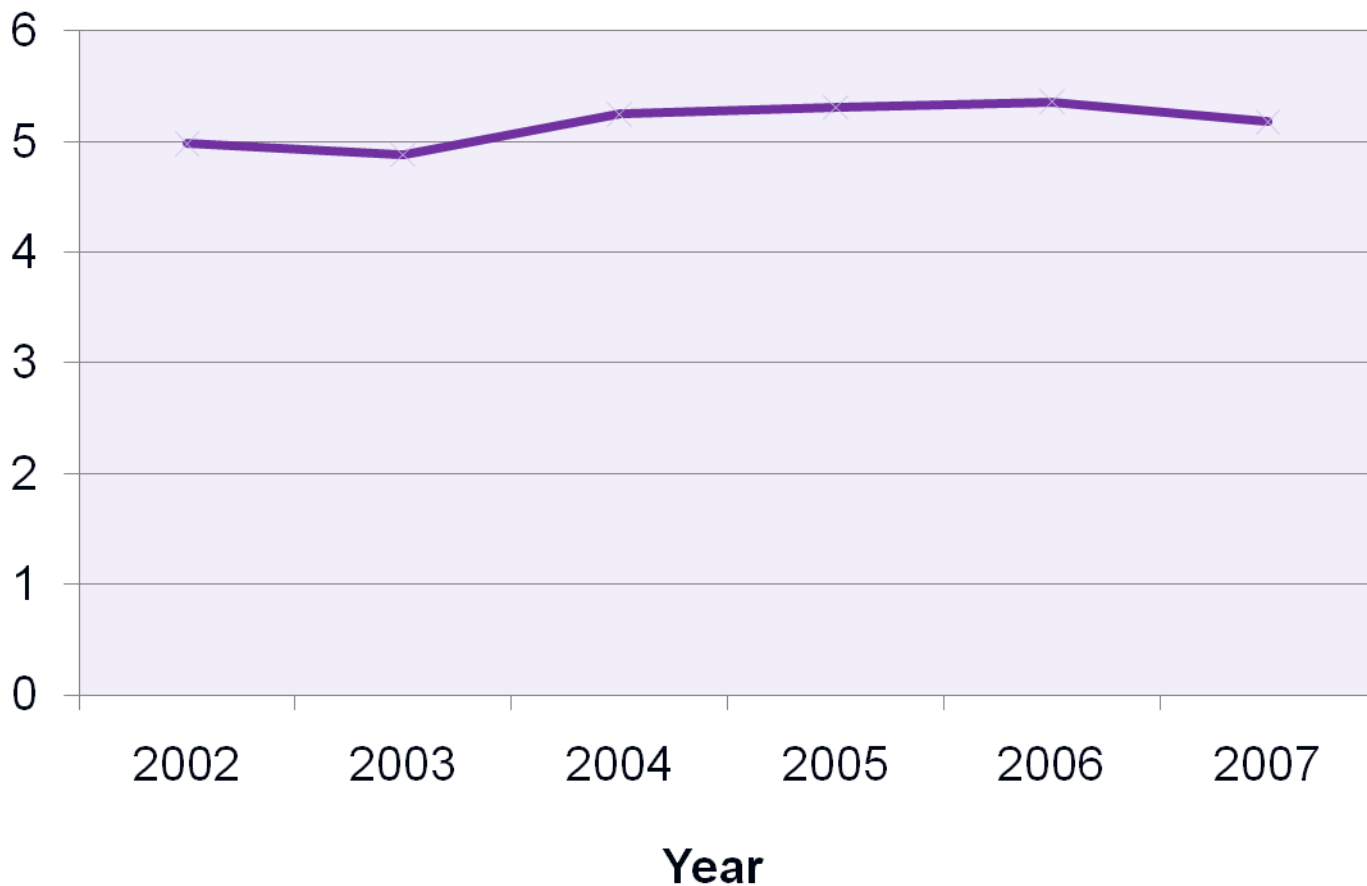
Trends in Rehospitalization



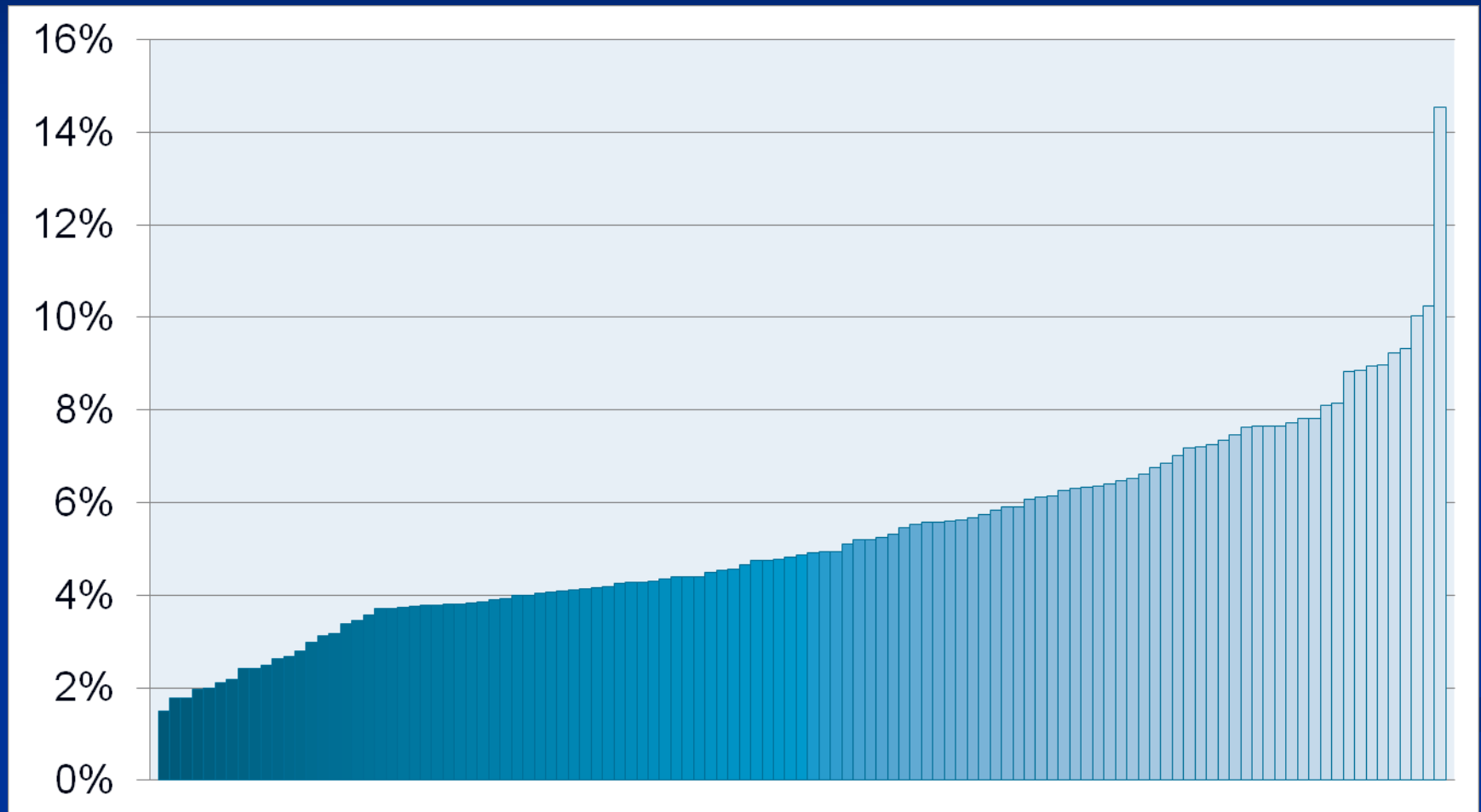
Denominator: all hospitalizations, not limited to one per patient

Trends in Admission Rates

Heart Failure Admissions
per 1000 Patients

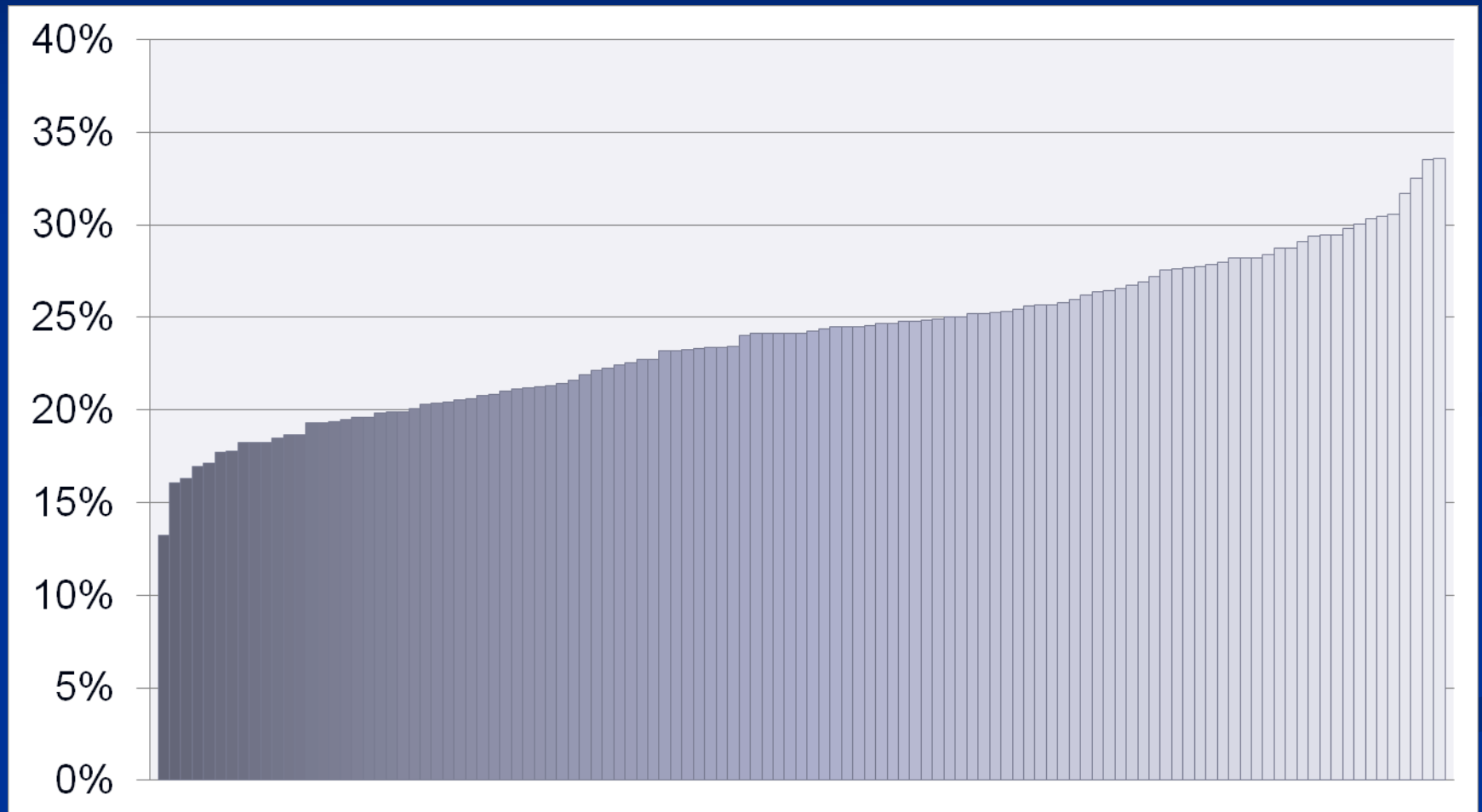


30 Day Mortality Distribution for VA Facilities



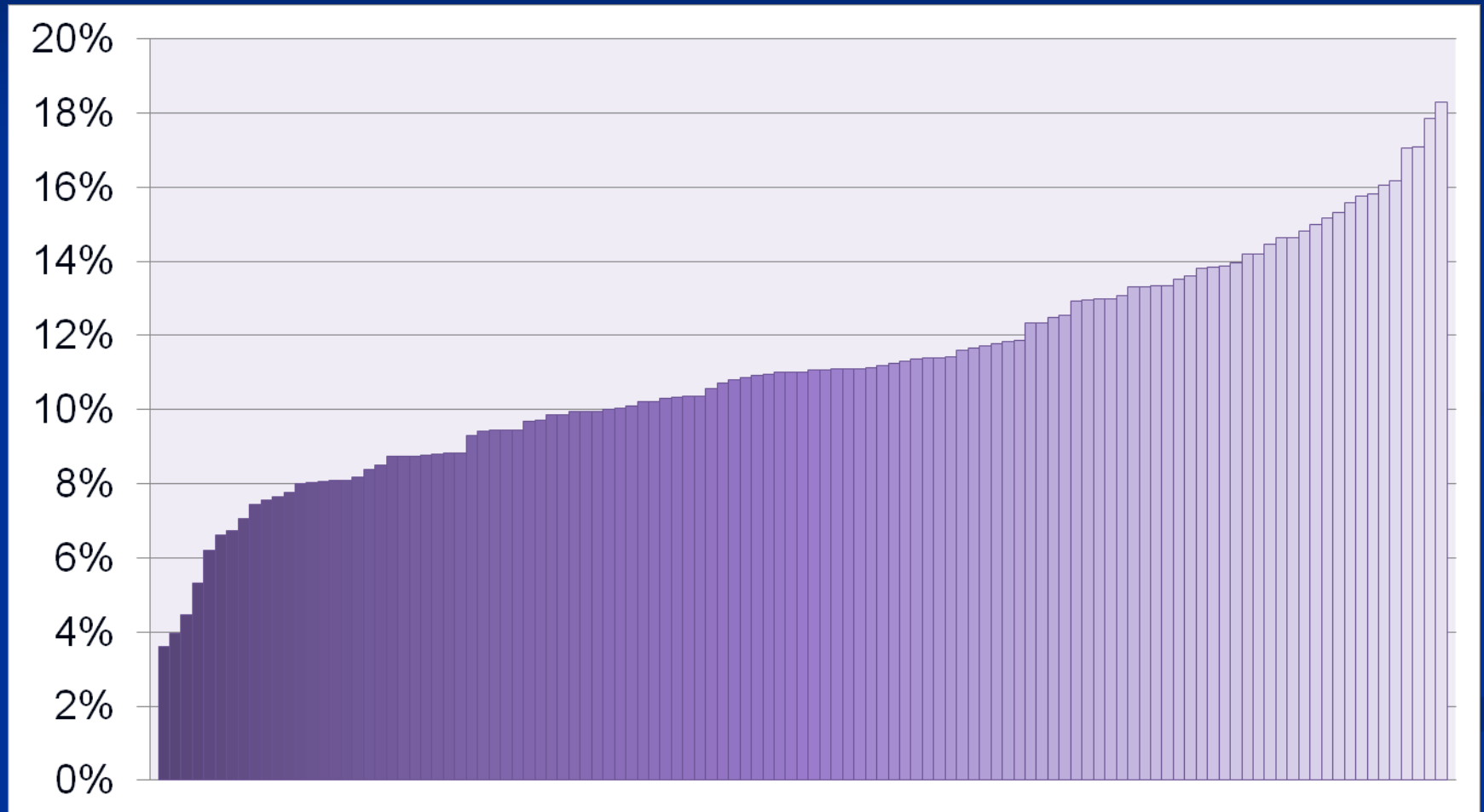
Excludes Facilities with < 100 HF discharges over 2 years.

30 Readmissions (All Cause) Distribution for VA Facilities



Excludes Facilities with < 100 HF discharges over 2 years.

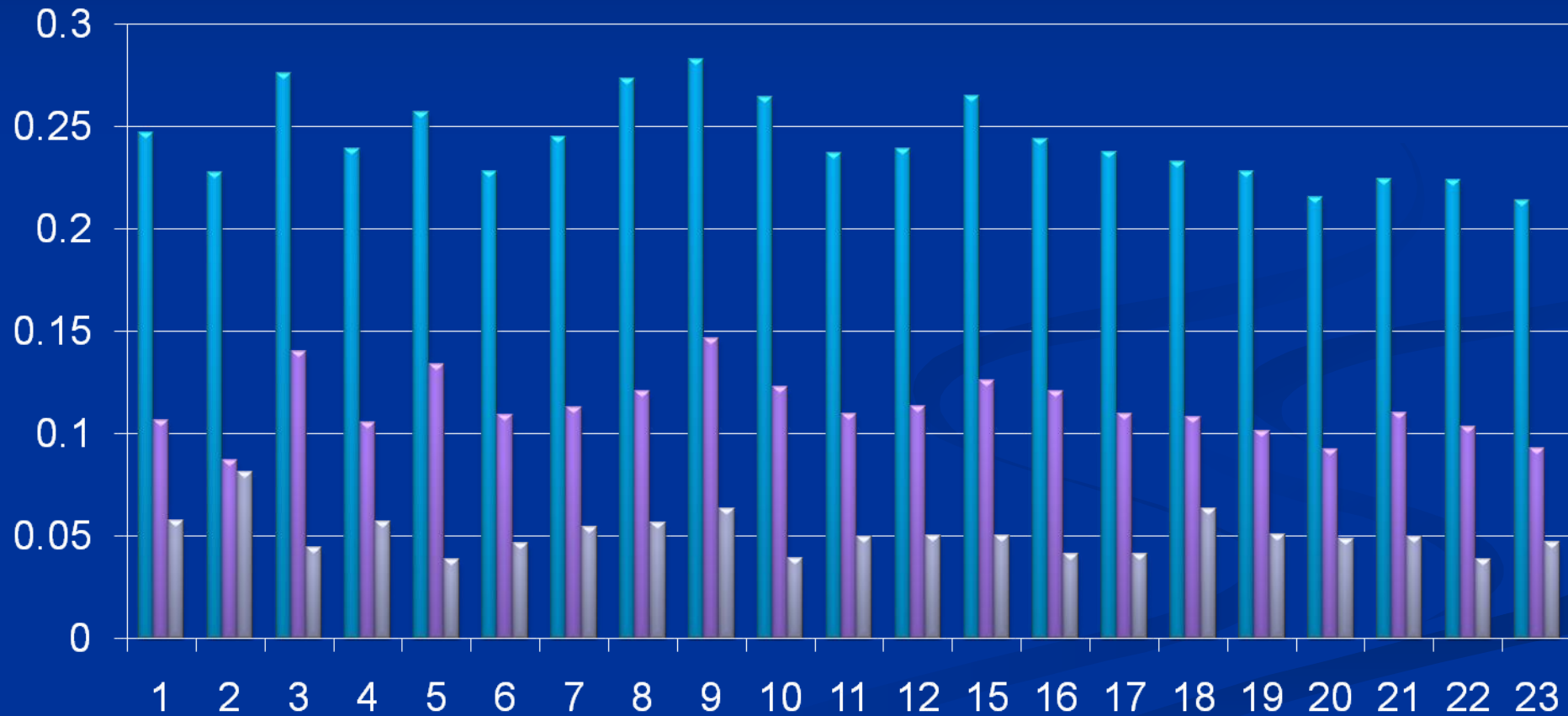
30 Readmissions (HF Principal Dx) Distribution for VA Facilities



Excludes Facilities with < 100 HF discharges over 2 years.

VISN 30 Day Outcome Following a Heart Failure Discharge

■ Any Readmission ■ HF Readmission ■ Mortality



VISN

Summary

- Readmission rates stable over the last several years
- Large variation across facilities
- Mortality rates improving, also highly variable across facilities.
- CMS Core measures of process of care remain at a high level