

VA Heart Failure Network

Paul Heidenreich MD, MS

1/22/08

Announcements-Trials

- TOPCAT
- USE-BNP
- Echo Registry

Increasing Early Follow-up Following Heart Failure Hospitalization

Paul Heidenreich MD, MS

Barry Massie MD

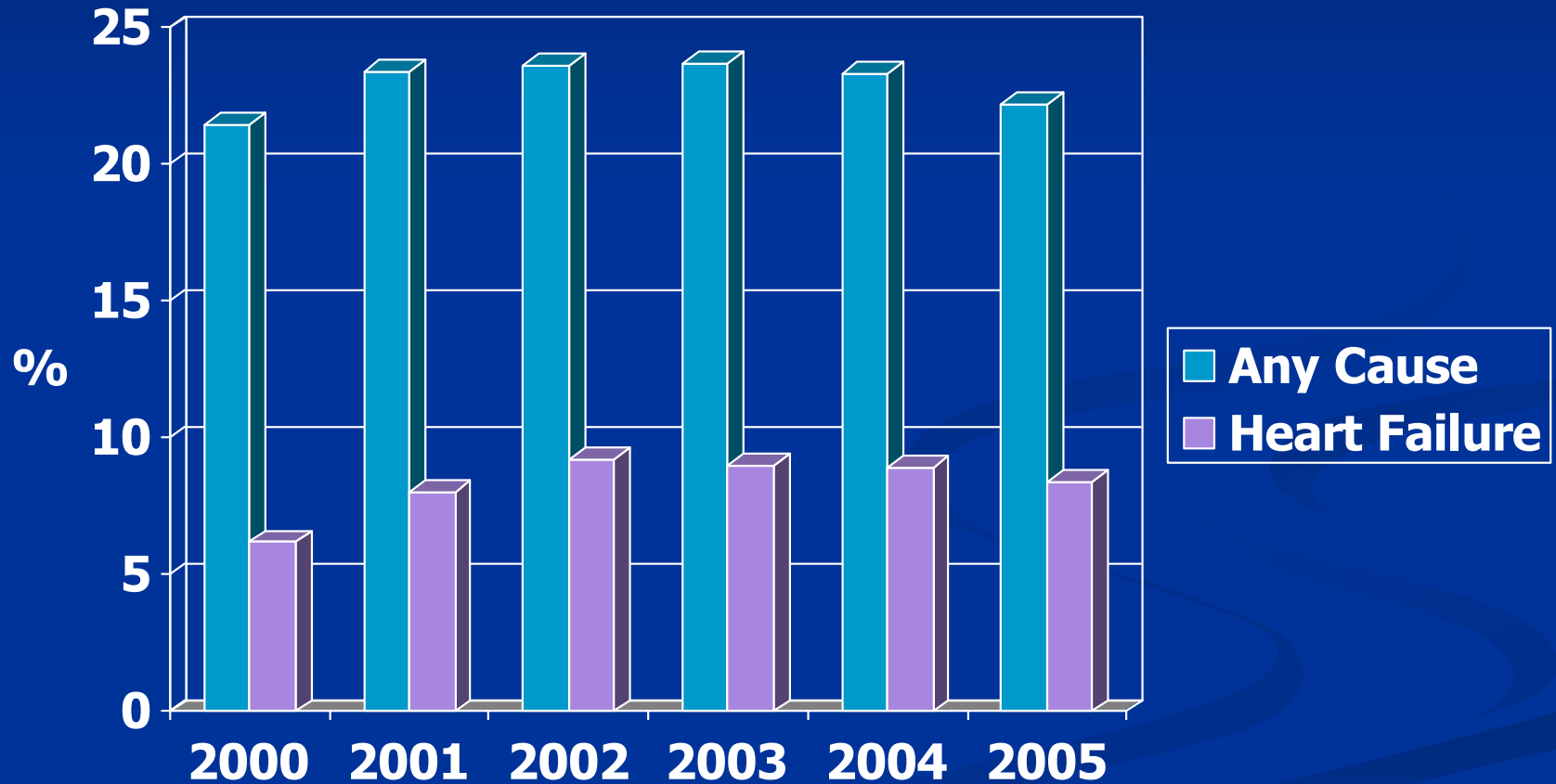
Anju Sahay PhD

Robert Jesse MD, PhD

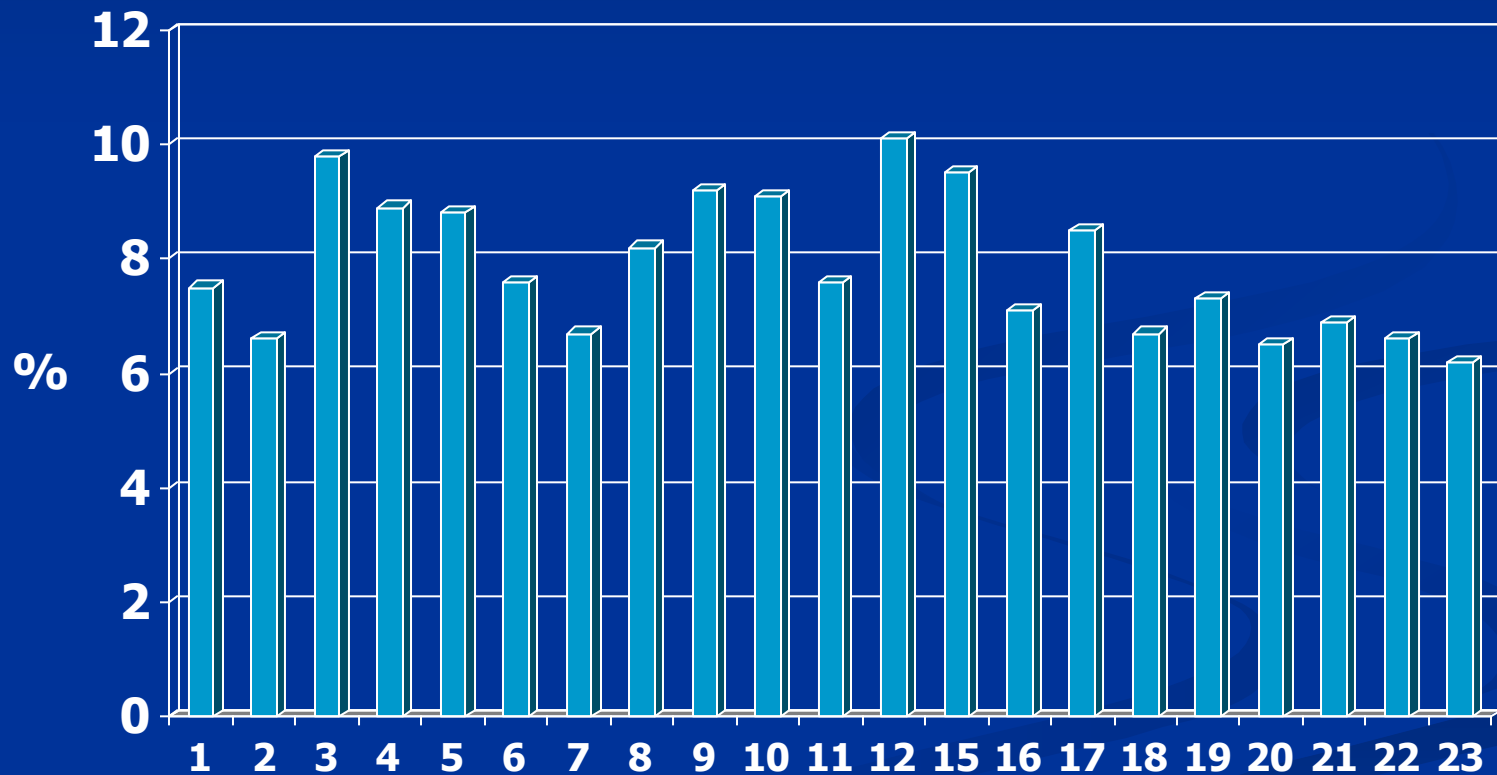
Background

- Medicare readmission rates
- VA readmission rates
- VA 14 day follow-up rates
- Review of Institute for Healthcare Improvement (IHI) initiative
- Discussion

Readmissions Following a Heart Failure Discharge



VISN Level: 30 Day HF Readmission



Questions

- How can we increase early follow-up following discharge?
 - With and without an increase in resources?

IHI

Save 5 Million Lives From Harm

- Prevent pressure ulcers
- Reduce MRSA
- Prevent harm from high-alert medications
- Reduce Surgical Complications
- **Deliver reliable evidence-based care for heart failure**
- Get boards on board

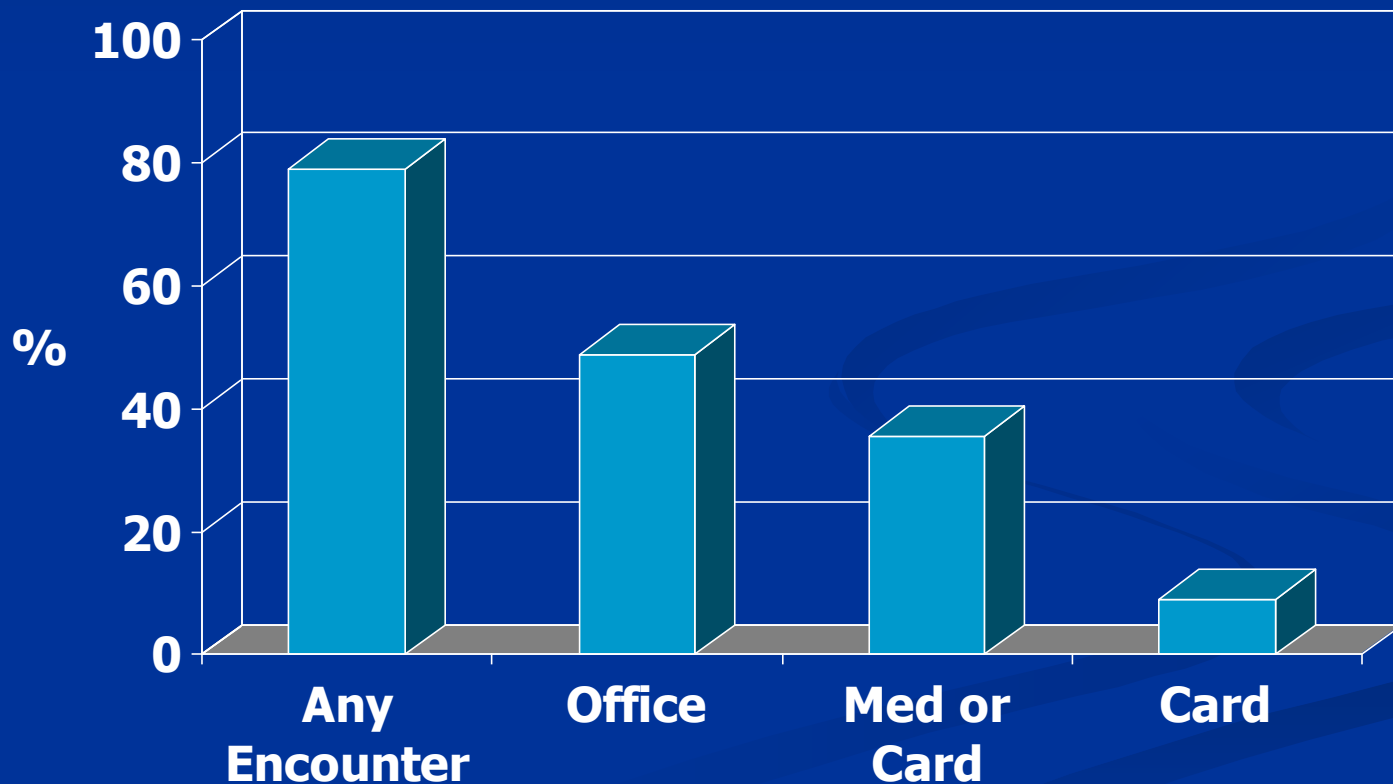
IHI 5 Million Lives Campaign: Heart Failure

- Goal: Deliver reliable evidence-based care for congestive heart failure ... to reduce admissions.
 - Reduce the readmission rate by 50% by December 2008

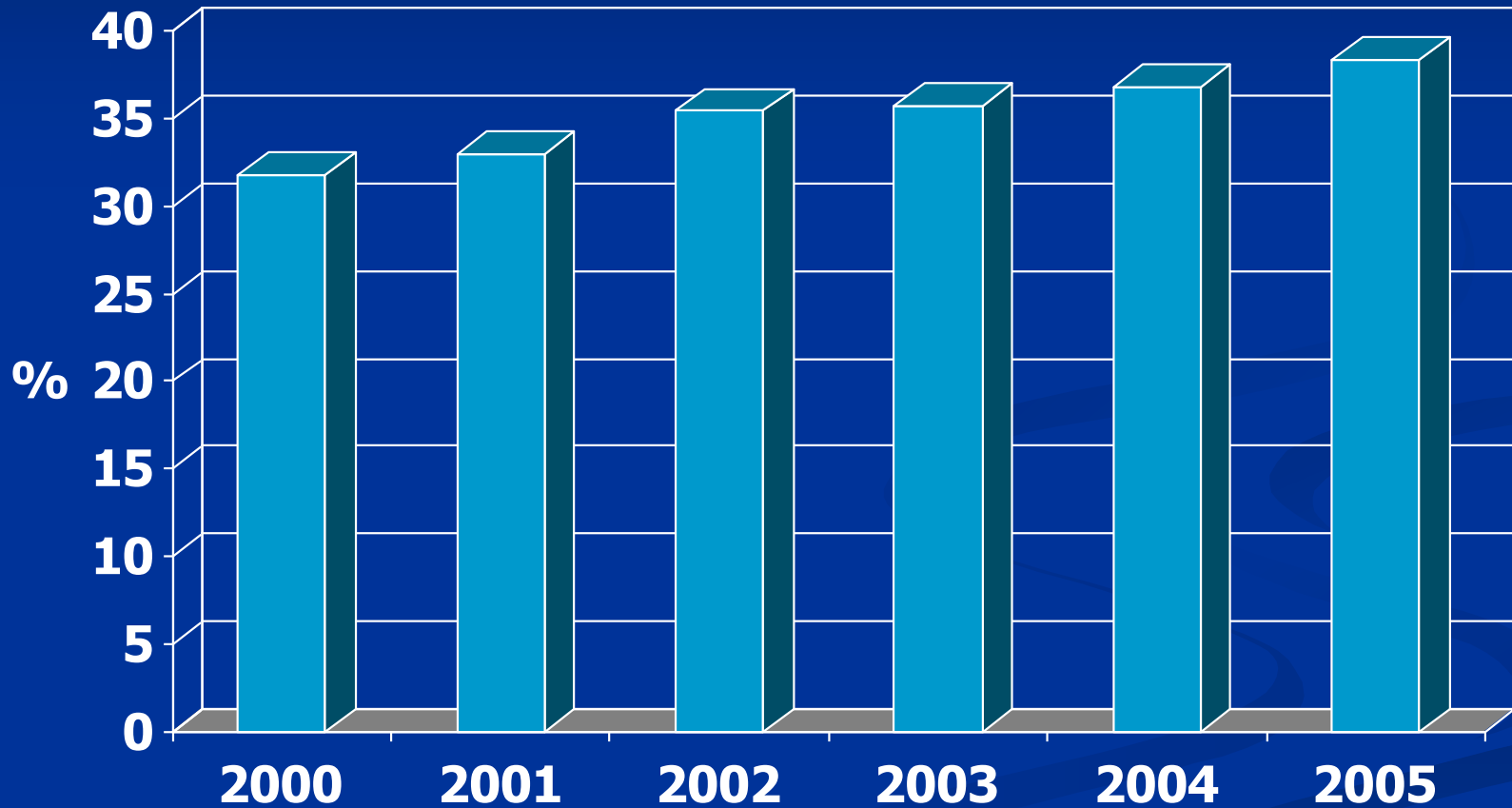
Discharge Checklist

- Reconcile Medications
- Teach Back
- Follow up phone call in 48 hours
 - Medication check
- Physician visit
 - 1 week for average risk patients
 - 48 hours for high risk patients
- Case management for high risk patients

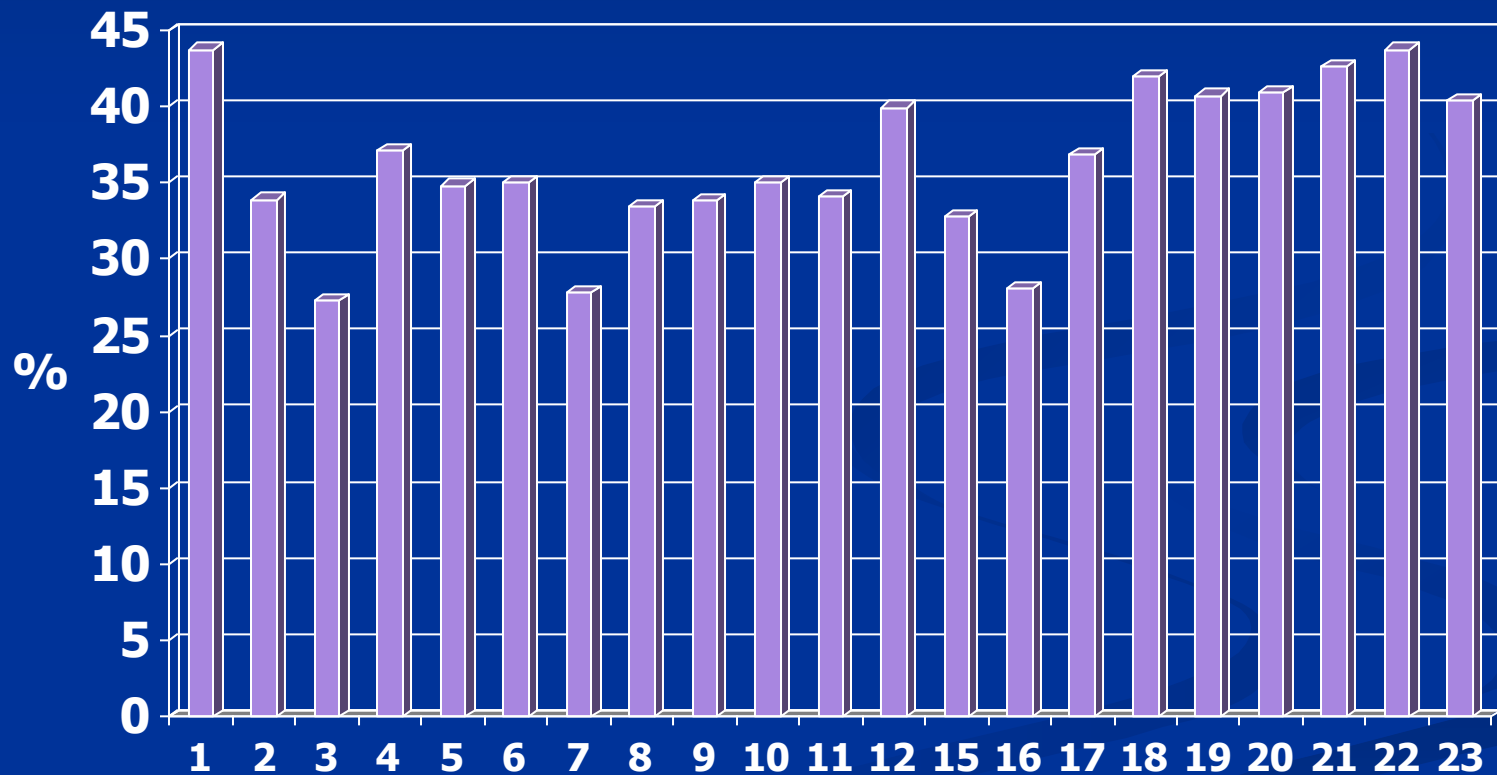
14 day Outpatient Encounters Following Discharge (1999-2005)



Trends in 14 Day Follow up: Medicine or Card.



VISN Level: 14 Day visits

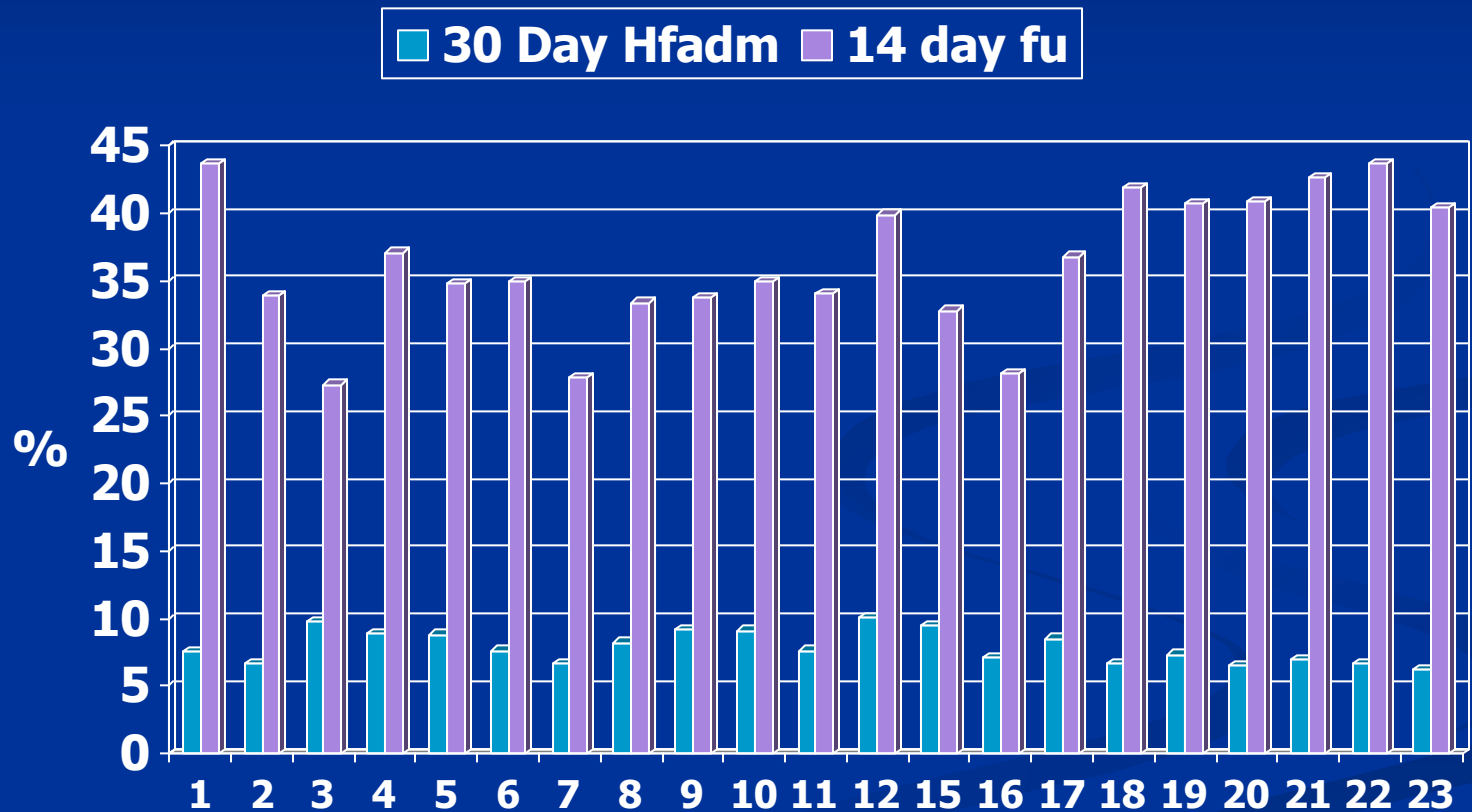


Questions

- How can we increase early follow-up following discharge?
 - With and without an increase in resources?
- Are certain sites interested in forming a collaborative to share current practices and test out new ones?

Discussion

VISN Level: 14 Day visits and 30 Day HF Readmission



VA Heart Failure 30-Day Mortality

