



US Army Corps
of Engineers
Alaska District

Date: May 4, 2012

Identification No:
SPN POA-2012-239



SPECIAL PUBLIC NOTICE (SPN) POA-2012-239

U.S. Army Corps of Engineers Regulatory Program Gustavus Ferry Terminal Navigation Obstructions

The Corps of Engineers is hereby notifying responsible parties that mooring buoys within the described area are resulting in an obstruction to navigation. Structures and work in navigable waters that result in an obstruction to navigation are in violation of Section 10 Rivers and Harbors Act of 1899 (33 U.S.C. 403).

All mooring buoys located within this geographic area are to be removed immediately by their owners.

The referenced geographic area is located within Section 19, T. 40 S., R. 59 E., Copper River Meridian; USGS Quad Map Juneau B-6; Latitude 58.3892° N., Longitude -135.7298° W.; near Gustavus, Alaska and is described as follows:

A line extending 0.3 nm (600 yards) in an Easterly direction from the most Eastward mooring dolphin at the Gustavus Ferry Terminal, then the line would extend to a point, 0.4nm (800 yards) South, then the line would extend to a point, 0.6nm (1200 yards) West, then the line would extend to a point, 0.3nm (600 yards) North, then the line would extend to the most Westward mooring dolphin at the pier.

Please reference the attached map dated April 30, 2012 for further clarification of the described area.

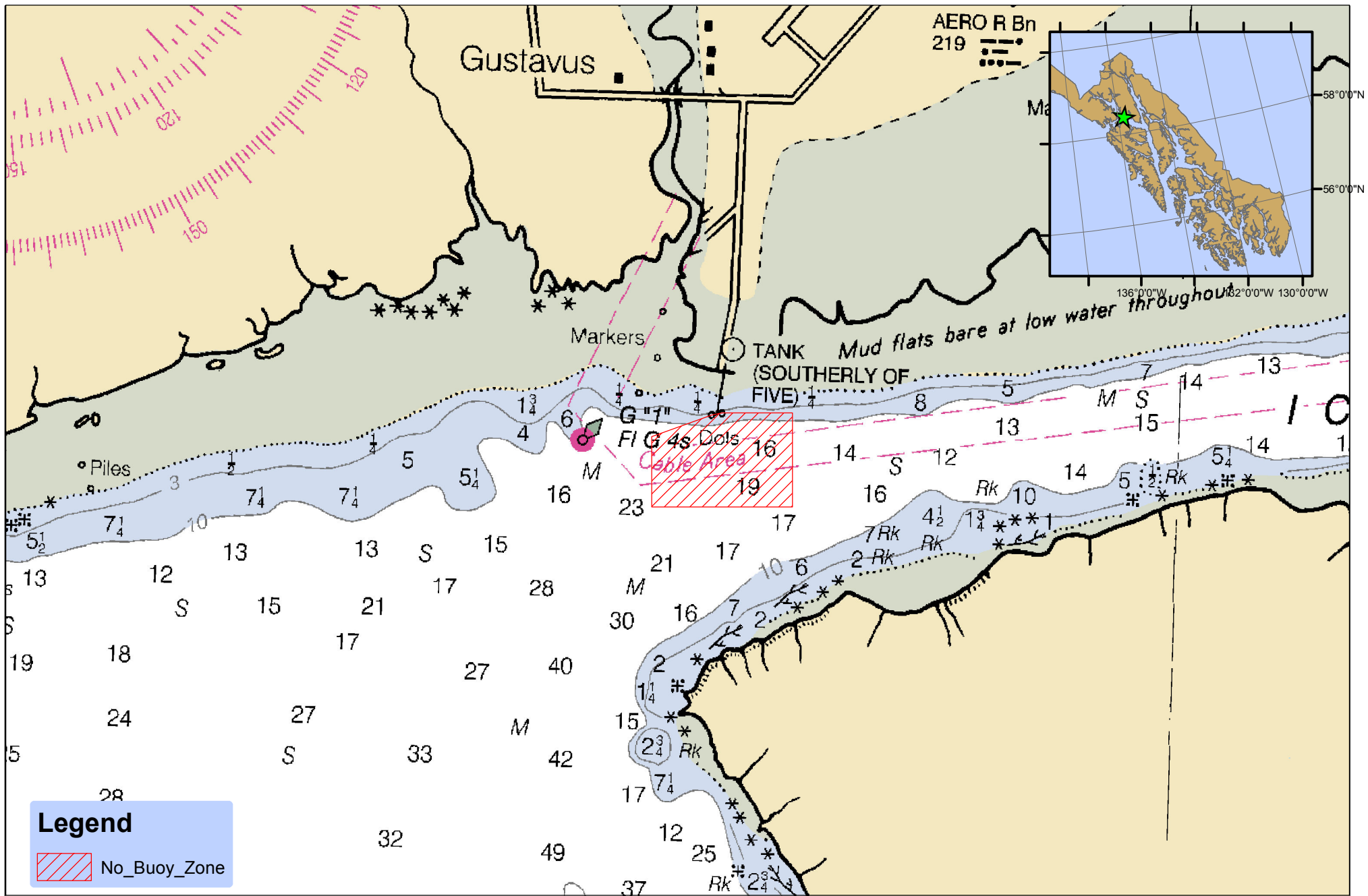
There can be substantial penalties for conducting unauthorized work in waters of the U.S. Section 12 of the Rivers and Harbors Act provides penalties of not less than \$500, and not more than \$2,500, per day of violation or by imprisonment of up to one year, or both, for any person who violates Section 10 of the Rivers and Harbors Act.

Nothing in this special public notice shall be construed as excusing you from compliance with other Federal, State, or local statutes, ordinances, or regulations which may affect this work.

This Special Public Notice can also be access at: <http://www.poa.usace.army.mil/reg/SPNNew.htm>

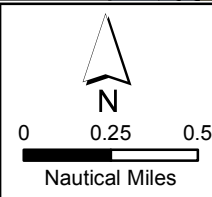
Please contact Matthew Brody from the Corps of Engineers at (907) 790-4493, by fax at (907) 790-4497, or by email at Matthew.T.Brody@usace.army.mil or Lt. Patrick Drayer from Coast Guard Sector Juneau at (907) 463-2468 or by email at Patrick.A.Drayer@uscg.mil if further information is desired concerning this notice.

District Engineer
U.S. Army, Corps of Engineers



NOTES: No Buoy Zone Defined

A line extending .3 nm (600 yds) in an Easterly direction from the most Eastward mooring dolphin, then the line would extend to a point, .4nm (800 yards) South, then the line would extend to a point, .6nm (1200 yards) West, then the line would extend to a point, .3nm (600 yards) North, then the line would extend to the most Westward mooring dolphin at the pier.



Gustavus No Buoy Zone



POA-2012-239
Gustavus, ALASKA

FIGURE 1 of 1
May 4, 2012