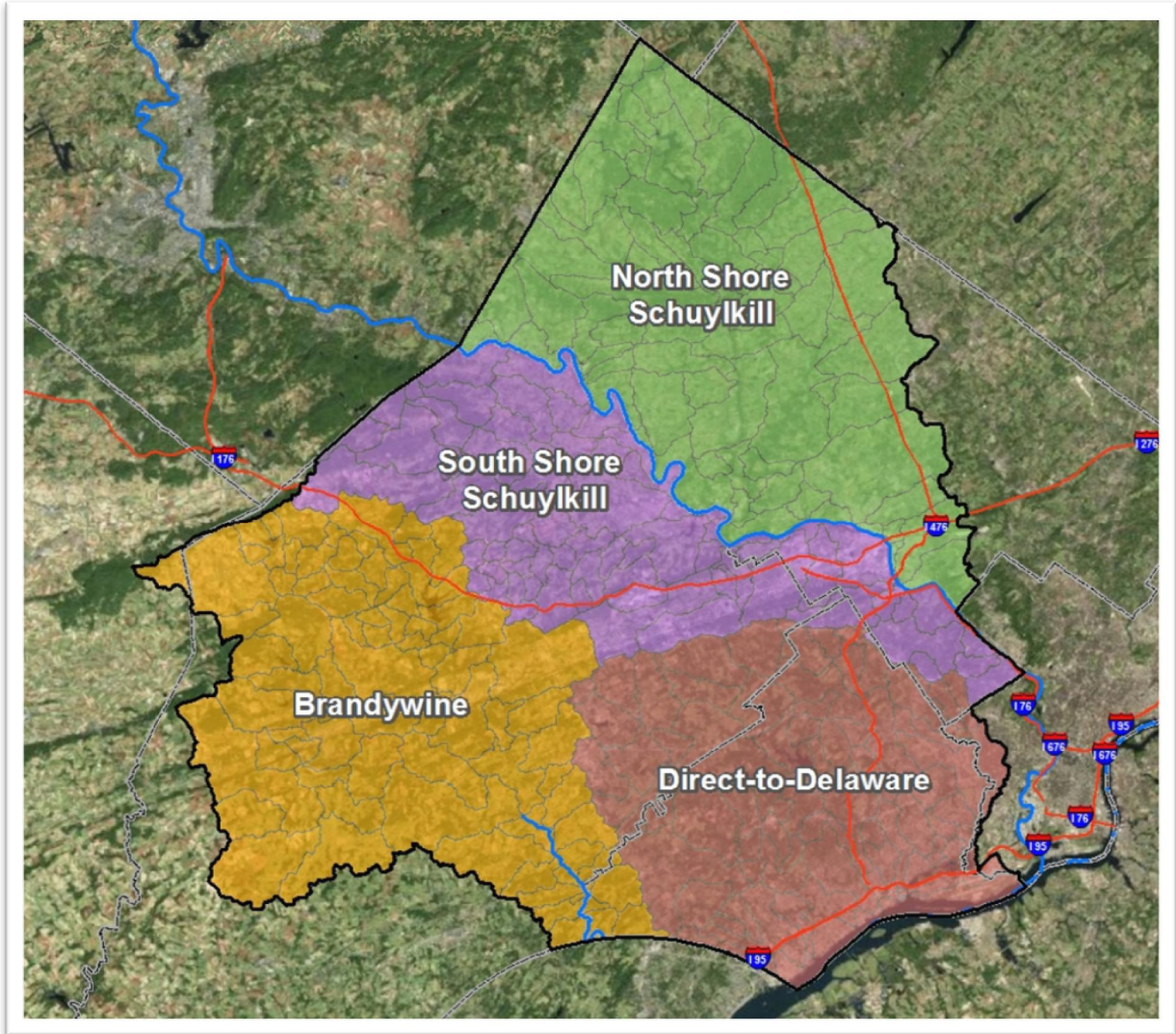


Chester, Delaware, and Montgomery Counties
Regional Watershed Improvement Project



Final Prioritization Report
August 1, 2012

Table of Contents

Project Summary.....	1
Decision Support Tool Overview.....	3
Decision Support Tool Weighting Factors.....	8
Results	10

- Appendix A – Brandywine Creek
- Appendix B – Direct-to-Delaware Tributaries
- Appendix C – North Shore Schuylkill River
- Appendix D – South Shore Schuylkill River

Prepared By:

U.S. Army Corps of Engineers
Philadelphia District
100 Penn Square East
Philadelphia, PA 19107

Pennsylvania Department of Environmental Protection
Southeast Regional Office
2 East Main Street
Norristown, PA 19401-4915

AECOM Technical Services, Inc.
1700 Market Street, Suite 1700
Philadelphia, PA 19103

Project Website:

<http://www.nap.usace.army.mil/Projects/spe/>

Project Summary

The Chester, Delaware, and Montgomery Counties Regional Watershed Improvement Project is a collaboration of the U.S. Army Corps of Engineers (USACE) Philadelphia District and its local sponsor, the Pennsylvania Department of Environmental Protection (PA DEP). This project, as part of the Army Corps of Engineers' Southeastern Pennsylvania Environmental Improvement Program (Section 566 Program), has design-build authority to assist in the development, design, and construction of priority watershed improvement projects related to flooding, water quality, and environmental restoration within the project area. The goal of this project is to improve regional coordination and collaboration inside the three county project area and to facilitate the accelerated implementation of beneficial watershed improvement projects. The project is structured to focus on regional, integrated solutions which best address multiple priority watershed issues.

All phases of this project are cost-shared 75% federal / 25% non-federal. Initial steps include the assessment of existing conditions and the objective identification of priority areas for watershed improvements. This report represents the completion of this phase and details the results of the prioritization process. Priority areas identified in this report are preferred candidates for further consideration under the Project/Program. Subsequent phases include project alternatives development, preliminary design, final design and permitting, and ultimately construction.

Project Phases

The Chester, Delaware, and Montgomery Counties Regional Watershed Improvement Project has seven distinct phases. The first three phases assess existing conditions and identify and prioritize areas in greatest need of watershed improvements. These three phases culminate in the development of a decision support tool and the prioritization of areas in greatest need for watershed improvements. This report represents the completion of Phase 3. The latter four phases represent the process which will be followed as alternative solutions to priority issues are evaluated and projects are selected, designed, permitted and constructed to address priority issues.

Table 1: Project Phases

Phase 1	Public Coordination and Involvement
Phase 2	Data Collection, Organization, and Analysis
Phase 3	Identify Priority Areas for Watershed Improvements (Decision Support Tool)
Phase 4	Project Alternatives Development
Phase 5	Preliminary Project Design
Phase 6	Final Design and Permitting
Phase 7	Construction

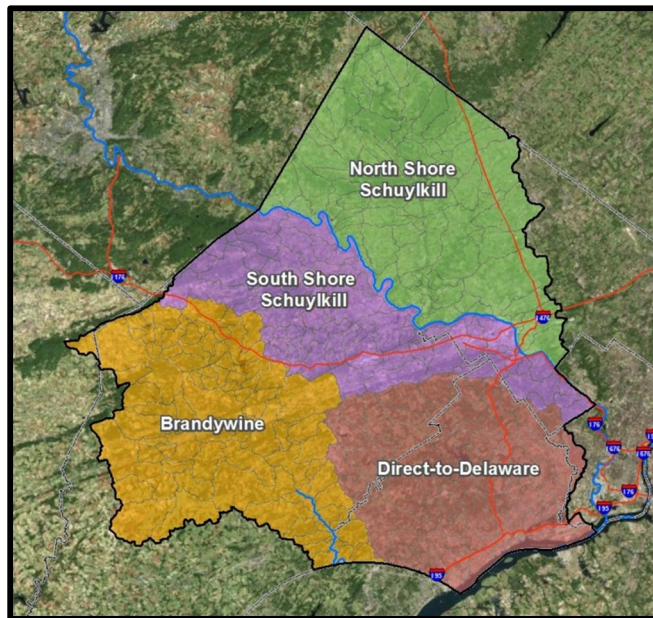
Project Funding

All phases of this project are cost-shared 75% federal / 25% non-federal. Phases 1, 2, and 3 were completed with previously authorized and appropriated funds and with the support of PA DEP as the non-federal sponsor. Additional federal and non-federal funding is required to proceed with all future phases. In addition, new sponsorship agreements with PA DEP and/or other local sponsors may be required.

Project Area

The project area is shown in Figure 1 below and includes the Brandywine Creek, Direct-to-Delaware River tributaries, and select Schuylkill River watersheds inside Chester, Delaware, and Montgomery Counties. Four separate subareas are being independently prioritized for watershed improvements. As shown in the figure below, these include the Brandywine Creek, Direct-to-Delaware River Tributaries, the South Shore of the Schuylkill River, and the North Shore of the Schuylkill River.

Figure 1: Project Area



Decision Support Tool Overview

This report presents the results of the GIS-based Decision Support Tool developed to comprehensively assess existing conditions and to identify and prioritize areas in greatest need of watershed improvements. The Decision Support Tool has been developed to provide an objective assessment of issues facing the project area and provide a consistent methodology for prioritization. The following sections provide an overview of the Decision Support Tool and present the Final Prioritization Results that will be used to guide future phases of the Chester, Delaware, and Montgomery Counties Regional Watershed Improvement Project.

Decision Support Tool Overview

The Decision Support Tool was developed to provide an objective assessment of existing conditions within the project area and to identify and prioritize areas in greatest need of watershed improvements. To facilitate both initial ease of use and continued use by stakeholders, the Decision Support tool was developed as an Esri ArcGIS 10 Extension. The Decision Support Tool, and all input data, is available for download on the project website (<http://www.nap.usace.army.mil/Projects/spe/>).

General Structure

Watershed issues were categorized into three groups that represent the primary issues of concern inside the project area; flooding, watershed health, and water quality. Within each of these categories, objective indicators were developed based on readily available GIS datasets to provide an in-depth assessment of issues facing the project area. Recognizing that issues facing the project area vary geographically, the tool has been designed with adjustable weighting factors to customize the analysis based on local issues of importance and priority concerns.

Prioritization analyses were performed independently for each prioritization area (the Brandywine Creek, Direct-to-Delaware River Tributaries, the South Shore of the Schuylkill River, and the North Shore of the Schuylkill River). Each prioritization area was divided into subwatersheds, or analysis units, that vary in size from five hundred acres to several square miles. Prioritization scores were calculated for each analysis unit, which can then be compared to identify priority areas for watershed improvements.

The Decision Support Tool calculates a prioritization score for each analysis unit according to the following steps:

- Calculate a value for each indicator
- Normalize indicator value to create a score from 1-10
- Apply indicator weighting factors to each indicator score and calculate the sum to determine category score
- Apply category weighting factors to each category score and calculate the sum to determine comprehensive prioritization score.

Figure 2 on the following page shows a schematic of this process for a selection of example indicators.

Below Figure 2 are Table 2, Table 3, and Table 4 that detail the objective indicators developed for each category.

Figure 2: Decision Support Tool Schematic

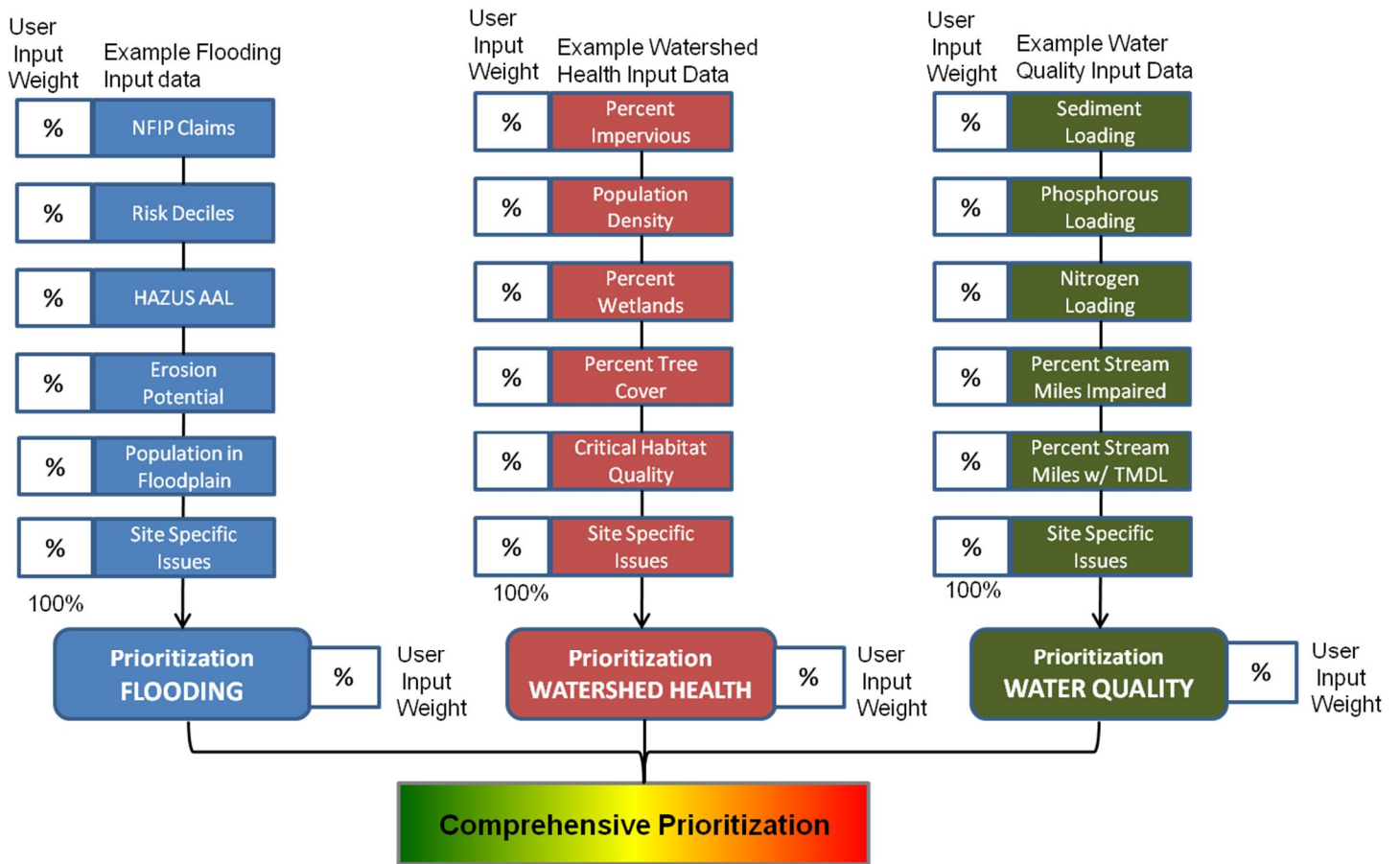


Table 2. Flooding Indicators

Name	Description
Flooding Indicators	
NFIP Claims per Square Mile	The number of National Flood Insurance Program claims per square mile within each analysis unit
FEMA Risk Decile	The cumulative value of the risk deciles designated by FEMA within each analysis unit
Average Annualized Flood Loss per Square Mile	An estimate of the monetary damage within each analysis unit, determined by calculating the HAZUS (FEMA) annualized loss per square mile of the analysis unit
Percent Population in Floodplain	The percent of the analysis unit population that lives within a floodplain
Percent Highly Erodible Land	The percent of soils within the analysis unit that is designated by NRCS as either highly erodible land or potentially highly erodible land
Repetitive Loss Properties per Square Mile	The number of repetitive loss properties per square mile within each analysis unit
Site Specific Flood Issues per Square Mile	The number of flooding issues reported during outreach meetings by stakeholders and members of the community per square mile within the analysis unit

Table 3. Watershed Health Indicators

Name	Description
Watershed Health Indicators	
Percent Impervious	The percent of the analysis unit that is comprised of impervious cover
Population Density	The population per square mile within the analysis unit
Percent Wetlands	The percent of wetland cover within the analysis unit
Percent Hydric Soils	The percent of hydric soils within the analysis unit
Riparian Buffer Quality	The average value of the Natural Lands Trust riparian buffer quality ratings within the analysis unit. These values are based on stream characteristics, conservation value, and aquatic resources within 100 feet of the stream.
Percent Tree Cover	The percent of the analysis unit land cover that is classified as trees or forest
Critical Habitat Quality	The average value of the Natural Lands Trust critical habitat quality rating within the analysis unit
Percent of Stream Miles that are High Quality or Exceptional Value	The percent of the total streams within the analysis unit that are designated either EV (exceptional value) or HQ (high quality) in Chapter 93 of the Pennsylvania Code
Percent Increase in Impervious Cover	The average percent increase in impervious cover within the analysis unit from 2001-2006
Active Dams per Square Mile	The number of active dams per square mile within the analysis unit
Site Specific Watershed Health Issues per Square Mile	The number of watershed health issues reported during outreach meetings by stakeholders and members of the community per square mile within the analysis unit

Table 4. Water Quality Indicators

Name	Description
Water Quality Indicators	
Estimated Annual Sediment Loading per Square Mile	The estimated average annual sediment load per square mile within the analysis unit based on existing land cover
Estimated Annual Nitrogen Loading per Square Mile	The estimated average annual nitrogen load per square mile within the analysis unit based on existing land cover
Estimated Annual Phosphorous Loading per square mile	The estimated average annual phosphorus load per square mile within the analysis unit based on existing land cover
Percent of Stream Miles Impaired	The percentage of the streams within the analysis unit that do not attain their designated use according to the PADEP
Percent of Stream Miles with TMDL	The percentage of the streams within the analysis unit that have an established Total Maximum Daily Load
Legacy Dams per Square Mile	The total number of legacy dams, or recently removed dams, per square mile within the analysis unit
Sanitary Sewer Overflows per Square Mile	The total number of recorded sanitary sewer overflows per square mile within the analysis unit
Water Degradation Sources per Square Mile	The total number of potential water degradation sources, as identified by PADEP, per square mile within the analysis unit
Site Specific Water Quality Issues per Square Mile	The number of flooding issues reported during outreach meetings by stakeholders and members of the community per square mile within the analysis unit

Decision Support Tool Weighting Factors

The Decision Support Tool is calibrated to account for local issues of importance and priority concerns through the use of weighting factors. Unique weighting factors can be defined for each prioritization area to allow for the customization of the Decision Support Tool. Category weighting factors define the relative importance of flooding, watershed health, and water quality indicators. Indicator weighting factors define the relative importance of each indicator inside each of the three categories.

Category Weighting Factors

The category weighting factors for the four prioritization areas were determined based on input collected during stakeholder workshops, review of previously published material, and discussions with key stakeholders. Polling performed during stakeholder workshops provided initial weighting factors that highlighted issues of local importance and priority concerns. These values were then adjusted based on best professional judgment and consideration of broader issues to create recommended category weighting factors. The recommended category weighting factors for each prioritization area are shown below in Table 5.

Table 5. Recommended Category Weighting Factors

Category Name	Brandywine Creek	Direct-to-Delaware Tributaries	North Shore Schuylkill River	South Shore Schuylkill River
Flooding	30	50	30	30
Watershed Health	35	25	30	35
Water Quality	35	25	40	35

Indicator Weighting Factors

Indicator weighting factors were determined using best professional judgment. Inside each category, indicators with the strongest correlation to key flooding, watershed health, and water quality issues were given higher weightings. In addition, consideration was also given to the coverage and consistency of each indicator dataset. As these indicator weighting factors represent the inherent value of each indicator, identical indicator weighting factors are recommended for all prioritization areas. The recommended indicator weighting factors are shown on the following page in Table 6.

Table 6. Recommended Indicator Weighting Factors

Indicator Name	Weighting Factor (%)
Flooding Indicators	
NFIP Claims per Square Mile	10
FEMA Risk Decile	15
Average Annualized Flood Loss per Square Mile	20
Percent Population in Floodplain	10
Percent Highly Erodible Land	15
Repetitive Loss Properties per Square Mile	25
Site Specific Flood Issues per Square Mile	5
Watershed Health Indicators	
Percent Impervious	30
Population Density	10
Percent Wetlands	5
Percent Hydric Soils	5
Riparian Buffer Quality	15
Percent Tree Cover	10
Critical Habitat Quality	5
Percent of Stream Miles that are High Quality or Exceptional Value	5
Percent Increase in Impervious Cover	5
Active Dams per Square Mile	5
Site Specific Watershed Health Issues per Square Mile	5
Water Quality Indicators	
Estimated Annual Sediment Loading per Square Mile	20
Estimated Annual Nitrogen Loading per Square Mile	10
Estimated Annual Phosphorus Loading per Square Mile	10
Percent of Stream Miles Impaired	25
Percent of Stream Miles with TMDL	5
Legacy Dams per Square Mile	7.5
Sanitary Sewer Overflows per Square Mile	7.5
Water Degradation Sources per Square Mile	10
Site Specific Water Quality Issues per Square Mile	5

Results

Results of the prioritization analysis are presented in the following appendices:

- Appendix A – Brandywine Creek
- Appendix B – Direct-to-Delaware Tributaries
- Appendix C – North Shore Schuylkill River
- Appendix D – South Shore Schuylkill River

Analysis units inside each prioritization area have been classified into the following categories:

- Highest Priority (Top 20%)
- High Priority (20% - 40%)
- Priority (40% - 60%)
- Low Priority (60% - 80%)
- Lowest Priority (80% - 100%)

Areas classified as Highest Priority or High Priority have been identified as areas in greatest need for watershed improvements and are preferred candidates for future consideration under the Project/Program, pending additional funding. It is important to note that the exact ranking is not as important as the availability of funding and the degree of local support.

It is also important to note that just because an analysis unit has been identified as high priority does not mean that the solution to the problem has to be constructed/implemented inside the analysis unit. Phase 4, Project Alternatives Development, will assess a suite of alternatives to identify the most cost effective and beneficial alternative, whether it is in the analysis unit or in an upstream area.

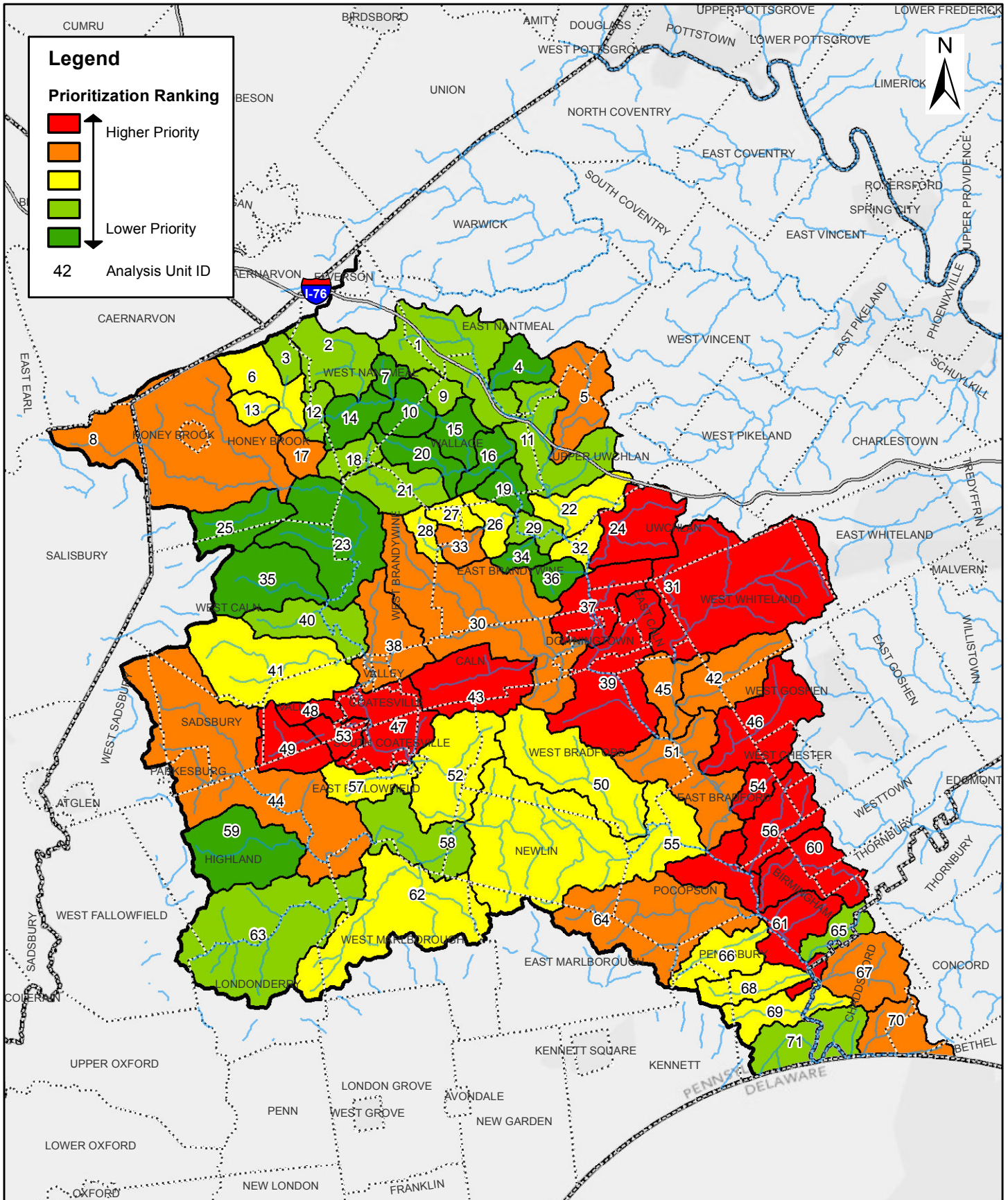
Each appendix includes the following information:

- Prioritization Exhibit – map with color codes identifying prioritization classification of each analysis unit. Includes analysis unit number to reference in subsequent tables.
- Tabular Summary – tables including analysis unit number and name, prioritization rank and classification, overall prioritization score, and category scores.
- Full Tabular Results – tables including all category and indicator scores for each analysis unit.

The Decision Support Tool, including all prioritization results, is available for download from the Project Website (<http://www.nap.usace.army.mil/Projects/spe/>) should a more detailed review of the prioritization results be desired.

Appendix A

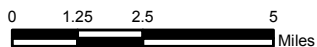
Brandywine Creek



**Final Prioritization Report
Prioritization Exhibit
Brandywine Creek**



AECOM



August 2012



Final Prioritization Report

Tabular Summary

Brandywine Creek



Analysis Unit	Overall Watershed Name	Prioritization Classification	Prioritization Rank (1 to 71)	Overall Prioritization Score	Flooding Category Score	Watershed Health Category Score	Water Quality Category Score
1	MARSH CREEK	Low Priority	57	2.43	2.2	2.8	2.3
2	EAST BRANCH BRANDYWINE CREEK	Low Priority	49	2.65	2.4	2.9	2.6
3	EAST BRANCH BRANDYWINE CREEK	Low Priority	44	2.93	1.3	3.0	4.2
4	LYONS RUN	Lowest Priority	69	2.13	1.6	2.6	2.0
5	BLACK HORSE CREEK	High Priority	24	3.73	4.4	3.4	3.5
6	EAST BRANCH BRANDYWINE CREEK	Priority	36	3.32	2.0	3.3	4.4
7	EAST BRANCH BRANDYWINE CREEK	Lowest Priority	68	2.14	2.4	1.8	2.2
8	WEST BRANCH BRANDYWINE CREEK	High Priority	22	3.76	2.8	3.1	5.2
9	EAST BRANCH BRANDYWINE CREEK	Low Priority	55	2.45	2.4	2.8	2.0
10	EAST BRANCH BRANDYWINE CREEK	Lowest Priority	63	2.30	2.8	1.6	2.6
11	MARSH CREEK	Low Priority	50	2.61	2.5	2.6	2.7
12	EAST BRANCH BRANDYWINE CREEK	Low Priority	44	2.93	1.8	2.9	3.9
13	EAST BRANCH BRANDYWINE CREEK	Priority	38	3.26	2.0	3.6	4.0
14	EAST BRANCH BRANDYWINE CREEK	Lowest Priority	67	2.22	2.4	1.8	2.4
15	EAST BRANCH BRANDYWINE CREEK	Lowest Priority	61	2.34	2.4	2.6	2.0
16	EAST BRANCH BRANDYWINE CREEK	Lowest Priority	70	2.08	2.2	1.4	2.7
17	EAST BRANCH BRANDYWINE CREEK	High Priority	27	3.61	2.4	3.8	4.4
18	INDIAN RUN	Low Priority	54	2.50	2.0	3.2	2.2
19	EAST BRANCH BRANDYWINE CREEK	Lowest Priority	58	2.37	2.4	2.1	2.7
20	INDIAN RUN	Lowest Priority	60	2.35	1.6	2.6	2.6
21	INDIAN RUN	Low Priority	51	2.59	2.3	2.9	2.5
22	MARSH CREEK	Priority	43	3.01	2.4	3.0	3.5
23	WEST BRANCH BRANDYWINE CREEK	Lowest Priority	58	2.37	3.1	1.9	2.2
24	SHAMONA CREEK	Highest Priority	12	5.05	3.9	4.0	7.0
25	TWO LOG RUN	Lowest Priority	65	2.28	2.8	1.7	2.4
26	CULBERTSON RUN	Priority	41	3.07	2.4	3.3	3.3
27	CULBERTSON RUN	Priority	38	3.26	1.8	3.7	4.1
28	CULBERTSON RUN	Priority	31	3.48	1.8	4.1	4.3
29	EAST BRANCH BRANDYWINE CREEK	Low Priority	48	2.66	4.5	1.9	1.8
30	BEAVER CREEK	High Priority	16	4.50	5.2	4.2	4.1
31	VALLEY CREEK	Highest Priority	3	6.24	5.5	5.4	7.8
32	EAST BRANCH BRANDYWINE CREEK	Priority	40	3.15	2.7	2.3	4.4
33	CULBERTSON RUN	High Priority	18	4.24	3.1	4.5	5.0
34	EAST BRANCH BRANDYWINE CREEK	Lowest Priority	61	2.34	1.5	3.3	2.0
35	BIRCH RUN	Lowest Priority	71	1.90	2.2	1.7	1.8
36	EAST BRANCH BRANDYWINE CREEK	Lowest Priority	66	2.25	1.8	3.0	1.8
37	EAST BRANCH BRANDYWINE CREEK	Highest Priority	11	5.09	4.9	4.4	5.9
38	WEST BRANCH BRANDYWINE CREEK	High Priority	25	3.67	2.6	3.4	4.9
39	EAST BRANCH BRANDYWINE CREEK	Highest Priority	7	5.36	6.6	4.0	5.7
40	WEST BRANCH BRANDYWINE CREEK	Low Priority	47	2.68	2.6	2.6	2.7
41	ROCK RUN	Priority	28	3.56	2.8	4.1	3.6
42	BROAD RUN	High Priority	15	4.57	3.4	3.5	6.6
43	VALLEY RUN	Highest Priority	6	5.81	5.4	6.2	5.8
44	BUCK RUN	High Priority	21	4.00	3.2	3.8	4.8
45	VALLEY CREEK	High Priority	22	3.76	4.4	2.6	4.4
46	TAYLOR RUN	Highest Priority	5	5.91	5.8	4.9	7.1
47	WEST BRANCH BRANDYWINE CREEK	Highest Priority	2	6.41	4.8	6.6	7.6
48	SUCKER RUN	Highest Priority	4	5.94	4.2	6.0	7.3
49	SUCKER RUN	Highest Priority	8	5.33	4.2	5.4	6.3



Final Prioritization Report

Tabular Summary

Brandywine Creek



Analysis Unit	Overall Watershed Name	Prioritization Classification	Prioritization Rank (1 to 71)	Overall Prioritization Score	Flooding Category Score	Watershed Health Category Score	Water Quality Category Score
50	BROAD RUN	Priority	33	3.36	2.8	3.2	4.0
51	EAST BRANCH BRANDYWINE CREEK	High Priority	19	4.16	5.0	3.2	4.4
52	WEST BRANCH BRANDYWINE CREEK	Priority	36	3.32	3.2	3.1	3.6
53	SUCKER RUN	Highest Priority	1	6.47	4.0	6.7	8.4
54	BLACKHORSE RUN	Highest Priority	10	5.24	3.8	4.8	7.0
55	WEST BRANCH BRANDYWINE CREEK	Priority	32	3.38	4.0	2.6	3.5
56	PLUM RUN	Highest Priority	9	5.28	5.1	4.2	6.5
57	DENNIS RUN	Priority	28	3.56	2.4	5.0	3.1
58	BUCK RUN	Low Priority	51	2.59	2.1	2.8	2.8
59	BIRCH RUN	Lowest Priority	63	2.30	1.9	3.2	1.8
60	RADLEY RUN	Highest Priority	13	4.84	3.8	4.8	5.8
61	BRANDYWINE CREEK	Highest Priority	13	4.84	5.7	3.7	5.2
62	DOE RUN	Priority	42	3.06	2.3	3.7	3.0
63	DOE RUN	Low Priority	46	2.91	2.3	3.8	2.6
64	POCOPSON CREEK	High Priority	20	4.15	3.8	3.4	5.1
65	BRINTON RUN	Low Priority	53	2.56	2.6	2.9	2.2
66	BENNETTS RUN	Priority	33	3.36	3.6	2.8	3.7
67	HARVEY RUN	High Priority	17	4.41	4.0	3.0	6.1
68	RING RUN	Priority	30	3.53	3.5	4.0	3.1
69	BRANDYWINE CREEK	Priority	35	3.35	4.1	2.1	4.0
70	BEAVER CREEK	High Priority	26	3.66	3.0	4.5	3.4
71	BRANDYWINE CREEK	Low Priority	56	2.44	2.7	2.1	2.5



Final Prioritization Report

Full Tabular Results

Brandywine Creek



Analysis Unit	Overall Watershed Name	Prioritization Classification	Prioritization Rank (1 to 71)	Overall Prioritization Score	Flooding Indicator Scores							
					Flooding Category Score	NFIP Claims per Square Mile	FEMA Risk Decile	Average Annualized Flood Loss per Square Mile	Percent Population in Floodplain	Percent Highly Erodible Land	Repetitive Loss Properties per Square Mile	Site Specific Flood Issues per Square Mile
1	MARSH CREEK	Low Priority	57	2.43	2.2	2.0	4.0	2.0	2.0	3.0	1.0	1.0
2	EAST BRANCH BRANDYWINE CREEK	Low Priority	49	2.65	2.4	1.0	3.0	3.0	5.0	3.0	1.0	1.0
3	EAST BRANCH BRANDYWINE CREEK	Low Priority	44	2.93	1.3	1.0	1.0	1.0	1.0	3.0	1.0	1.0
4	LYONS RUN	Lowest Priority	69	2.13	1.6	1.0	1.0	1.0	4.0	3.0	1.0	1.0
5	BLACK HORSE CREEK	High Priority	24	3.73	4.4	5.0	4.0	6.0	6.0	3.0	4.0	1.0
6	EAST BRANCH BRANDYWINE CREEK	Priority	36	3.32	2.0	3.0	2.0	2.0	3.0	3.0	1.0	1.0
7	EAST BRANCH BRANDYWINE CREEK	Lowest Priority	68	2.14	2.4	1.0	1.0	5.0	4.0	3.0	1.0	1.0
8	WEST BRANCH BRANDYWINE CREEK	High Priority	22	3.76	2.8	1.0	6.0	5.0	2.0	2.0	1.0	1.0
9	EAST BRANCH BRANDYWINE CREEK	Low Priority	55	2.45	2.4	1.0	1.0	6.0	4.0	2.0	1.0	1.0
10	EAST BRANCH BRANDYWINE CREEK	Lowest Priority	63	2.30	2.8	3.0	1.0	8.0	3.0	1.0	1.0	1.0
11	MARSH CREEK	Low Priority	50	2.61	2.5	2.0	5.0	3.0	2.0	3.0	1.0	1.0
12	EAST BRANCH BRANDYWINE CREEK	Low Priority	44	2.93	1.8	1.0	1.0	3.0	2.0	3.0	1.0	1.0
13	EAST BRANCH BRANDYWINE CREEK	Priority	38	3.26	2.0	1.0	1.0	2.0	6.0	3.0	1.0	1.0
14	EAST BRANCH BRANDYWINE CREEK	Lowest Priority	67	2.22	2.4	3.0	1.0	6.0	2.0	2.0	1.0	1.0
15	EAST BRANCH BRANDYWINE CREEK	Lowest Priority	61	2.34	2.4	1.0	1.0	7.0	1.0	2.0	1.0	1.0
16	EAST BRANCH BRANDYWINE CREEK	Lowest Priority	70	2.08	2.2	1.0	1.0	6.0	1.0	2.0	1.0	1.0
17	EAST BRANCH BRANDYWINE CREEK	High Priority	27	3.61	2.4	1.0	4.0	4.0	2.0	3.0	1.0	1.0
18	INDIAN RUN	Low Priority	54	2.50	2.0	1.0	4.0	2.0	3.0	2.0	1.0	1.0
19	EAST BRANCH BRANDYWINE CREEK	Lowest Priority	58	2.37	2.4	1.0	1.0	4.0	2.0	3.0	1.0	8.0
20	INDIAN RUN	Lowest Priority	60	2.35	1.6	1.0	1.0	3.0	2.0	2.0	1.0	1.0
21	INDIAN RUN	Low Priority	51	2.59	2.3	1.0	4.0	3.0	2.0	2.0	1.0	5.0
22	MARSH CREEK	Priority	43	3.01	2.4	1.0	3.0	4.0	3.0	3.0	1.0	1.0
23	WEST BRANCH BRANDYWINE CREEK	Lowest Priority	58	2.37	3.1	2.0	5.0	6.0	2.0	2.0	1.0	3.0
24	SHAMONA CREEK	Highest Priority	12	5.05	3.9	4.0	5.0	6.0	1.0	2.0	3.0	8.0
25	TWO LOG RUN	Lowest Priority	65	2.28	2.8	1.0	3.0	5.0	2.0	3.0	1.0	8.0
26	CULBERTSON RUN	Priority	41	3.07	2.4	1.0	2.0	5.0	3.0	3.0	1.0	1.0
27	CULBERTSON RUN	Priority	38	3.26	1.8	1.0	2.0	2.0	2.0	3.0	1.0	1.0
28	CULBERTSON RUN	Priority	31	3.48	1.8	1.0	2.0	2.0	2.0	3.0	1.0	1.0
29	EAST BRANCH BRANDYWINE CREEK	Low Priority	48	2.66	4.5	5.0	1.0	9.0	3.0	3.0	5.0	1.0
30	BEAVER CREEK	High Priority	16	4.50	5.2	5.0	7.0	7.0	5.0	3.0	4.0	7.0
31	VALLEY CREEK	Highest Priority	3	6.24	5.5	5.0	8.0	9.0	3.0	2.0	4.0	8.0
32	EAST BRANCH BRANDYWINE CREEK	Priority	40	3.15	2.7	1.0	2.0	7.0	1.0	3.0	1.0	1.0



Final Prioritization Report

Full Tabular Results

Brandywine Creek



Analysis Unit	Overall Watershed Name	Prioritization Classification	Prioritization Rank (1 to 71)	Overall Prioritization Score	Flooding Indicator Scores							
					Flooding Category Score	NFIP Claims per Square Mile	FEMA Risk Decile	Average Annualized Flood Loss per Square Mile	Percent Population in Floodplain	Percent Highly Erodible Land	Repetitive Loss Properties per Square Mile	Site Specific Flood Issues per Square Mile
33	CULBERTSON RUN	High Priority	18	4.24	3.1	4.0	3.0	5.0	3.0	2.0	1.0	8.0
34	EAST BRANCH BRANDYWINE CREEK	Lowest Priority	61	2.34	1.5	1.0	1.0	2.0	1.0	3.0	1.0	1.0
35	BIRCH RUN	Lowest Priority	71	1.90	2.2	1.0	4.0	3.0	2.0	3.0	1.0	1.0
36	EAST BRANCH BRANDYWINE CREEK	Lowest Priority	66	2.25	1.8	1.0	3.0	1.0	2.0	4.0	1.0	1.0
37	EAST BRANCH BRANDYWINE CREEK	Highest Priority	11	5.09	4.9	4.0	6.0	9.0	1.0	3.0	3.0	10.0
38	WEST BRANCH BRANDYWINE CREEK	High Priority	25	3.67	2.6	2.0	6.0	3.0	1.0	3.0	1.0	1.0
39	EAST BRANCH BRANDYWINE CREEK	Highest Priority	7	5.36	6.6	8.0	6.0	10.0	4.0	2.0	7.0	10.0
40	WEST BRANCH BRANDYWINE CREEK	Low Priority	47	2.68	2.6	1.0	4.0	5.0	2.0	3.0	1.0	1.0
41	ROCK RUN	Priority	28	3.56	2.8	2.0	6.0	4.0	1.0	3.0	1.0	3.0
42	BROAD RUN	High Priority	15	4.57	3.4	4.0	7.0	5.0	4.0	2.0	1.0	1.0
43	VALLEY RUN	Highest Priority	6	5.81	5.4	5.0	7.0	8.0	3.0	2.0	5.0	7.0
44	BUCK RUN	High Priority	21	4.00	3.2	2.0	7.0	5.0	2.0	3.0	1.0	1.0
45	VALLEY CREEK	High Priority	22	3.76	4.4	5.0	4.0	5.0	4.0	1.0	5.0	10.0
46	TAYLOR RUN	Highest Priority	5	5.91	5.8	8.0	7.0	6.0	3.0	3.0	7.0	4.0
47	WEST BRANCH BRANDYWINE CREEK	Highest Priority	2	6.41	4.8	4.0	8.0	8.0	1.0	2.0	4.0	4.0
48	SUCKER RUN	Highest Priority	4	5.94	4.2	8.0	4.0	1.0	1.0	5.0	7.0	1.0
49	SUCKER RUN	Highest Priority	8	5.33	4.2	4.0	5.0	8.0	3.0	3.0	1.0	8.0
50	BROAD RUN	Priority	33	3.36	2.8	2.0	6.0	3.0	1.0	2.0	1.0	9.0
51	EAST BRANCH BRANDYWINE CREEK	High Priority	19	4.16	5.0	7.0	4.0	6.0	3.0	2.0	6.0	9.0
52	WEST BRANCH BRANDYWINE CREEK	Priority	36	3.32	3.2	3.0	6.0	5.0	2.0	2.0	1.0	4.0
53	SUCKER RUN	Highest Priority	1	6.47	4.0	1.0	4.0	8.0	6.0	3.0	1.0	8.0
54	BLACKHORSE RUN	Highest Priority	10	5.24	3.8	4.0	5.0	5.0	1.0	3.0	4.0	1.0
55	WEST BRANCH BRANDYWINE CREEK	Priority	32	3.38	4.0	4.0	6.0	6.0	4.0	2.0	2.0	7.0
56	PLUM RUN	Highest Priority	9	5.28	5.1	6.0	6.0	6.0	2.0	3.0	6.0	5.0
57	DENNIS RUN	Priority	28	3.56	2.4	3.0	4.0	4.0	1.0	2.0	1.0	1.0
58	BUCK RUN	Low Priority	51	2.59	2.1	1.0	4.0	4.0	2.0	1.0	1.0	1.0
59	BIRCH RUN	Lowest Priority	63	2.30	1.9	1.0	3.0	2.0	2.0	3.0	1.0	1.0
60	RADLEY RUN	Highest Priority	13	4.84	3.8	2.0	5.0	7.0	4.0	3.0	1.0	6.0
61	BRANDYWINE CREEK	Highest Priority	13	4.84	5.7	7.0	5.0	7.0	3.0	2.0	7.0	10.0
62	DOE RUN	Priority	42	3.06	2.3	1.0	4.0	3.0	3.0	3.0	1.0	1.0
63	DOE RUN	Low Priority	46	2.91	2.3	1.0	5.0	2.0	3.0	3.0	1.0	1.0
64	POCOPSON CREEK	High Priority	20	4.15	3.8	3.0	6.0	5.0	4.0	3.0	2.0	6.0
65	BRINTON RUN	Low Priority	53	2.56	2.6	1.0	2.0	4.0	3.0	3.0	1.0	7.0
66	BENNETTS RUN	Priority	33	3.36	3.6	5.0	5.0	5.0	1.0	3.0	1.0	10.0
67	HARVEY RUN	High Priority	17	4.41	4.0	5.0	5.0	2.0	1.0	10.0	3.0	1.0
68	RING RUN	Priority	30	3.53	3.5	3.0	2.0	7.0	5.0	3.0	1.0	6.0
69	BRANDYWINE CREEK	Priority	35	3.35	4.1	7.0	2.0	5.0	1.0	3.0	6.0	1.0
70	BEAVER CREEK	High Priority	26	3.66	3.0	1.0	5.0	1.0	2.0	10.0	1.0	1.0
71	BRANDYWINE CREEK	Low Priority	56	2.44	2.7	1.0	4.0	5.0	1.0	3.0	1.0	4.0



Final Prioritization Report

Full Tabular Results

Brandywine Creek



Analysis Unit	Overall Watershed Name	Prioritization Classification	Prioritization Rank (1 to 71)	Overall Prioritization Score	Watershed Health Indicator Scores											
					Watershed Health Category Score	Percent Impervious	Population Density	Percent Wetlands	Percent Hydric Soils	Riparian Buffer Quality	Percent Tree Cover	Critical Habitat Quality	Percentage of stream miles that are HQ or EV	Site Specific Watershed Health Issues per Square Mile	Percent Increase in Impervious Cover	Active Dams per Square Mile
1	MARSH CREEK	Low Priority	57	2.43	2.8	1.0	1.0	3.0	2.0	10.0	4.0	2.0	1.0	1.0	1.0	1.0
2	EAST BRANCH BRANDYWINE CREEK	Low Priority	49	2.65	2.9	1.0	2.0	3.0	2.0	8.0	6.0	4.0	1.0	1.0	1.0	1.0
3	EAST BRANCH BRANDYWINE CREEK	Low Priority	44	2.93	3.0	1.0	1.0	3.0	2.0	9.0	6.0	5.0	1.0	1.0	1.0	1.0
4	LYONS RUN	Lowest Priority	69	2.13	2.6	1.0	1.0	4.0	2.0	10.0	2.0	1.0	1.0	1.0	1.0	1.0
5	BLACK HORSE CREEK	High Priority	24	3.73	3.4	2.0	5.0	3.0	2.0	7.0	6.0	4.0	1.0	1.0	1.0	1.0
6	EAST BRANCH BRANDYWINE CREEK	Priority	36	3.32	3.3	1.0	2.0	3.0	2.0	10.0	6.0	5.0	1.0	1.0	1.0	1.0
7	EAST BRANCH BRANDYWINE CREEK	Lowest Priority	68	2.14	1.8	1.0	2.0	4.0	2.0	1.0	5.0	3.0	1.0	1.0	1.0	1.0
8	WEST BRANCH BRANDYWINE CREEK	High Priority	22	3.76	3.1	2.0	3.0	3.0	2.0	5.0	7.0	6.0	1.0	1.0	1.0	1.0
9	EAST BRANCH BRANDYWINE CREEK	Low Priority	55	2.45	2.8	1.0	1.0	7.0	2.0	9.0	3.0	3.0	1.0	1.0	1.0	1.0
10	EAST BRANCH BRANDYWINE CREEK	Lowest Priority	63	2.30	1.6	1.0	2.0	3.0	2.0	2.0	2.0	2.0	1.0	1.0	1.0	1.0
11	MARSH CREEK	Low Priority	50	2.61	2.6	2.0	4.0	3.0	4.0	3.0	5.0	2.0	1.0	1.0	1.0	1.0
12	EAST BRANCH BRANDYWINE CREEK	Low Priority	44	2.93	2.9	1.0	3.0	3.0	2.0	7.0	6.0	4.0	1.0	1.0	1.0	1.0
13	EAST BRANCH BRANDYWINE CREEK	Priority	38	3.26	3.6	1.0	1.0	4.0	2.0	10.0	9.0	6.0	1.0	1.0	1.0	1.0
14	EAST BRANCH BRANDYWINE CREEK	Lowest Priority	67	2.22	1.8	1.0	1.0	4.0	1.0	3.0	4.0	3.0	1.0	1.0	1.0	1.0
15	EAST BRANCH BRANDYWINE CREEK	Lowest Priority	61	2.34	2.6	1.0	3.0	3.0	2.0	7.0	4.0	3.0	1.0	1.0	1.0	1.0
16	EAST BRANCH BRANDYWINE CREEK	Lowest Priority	70	2.08	1.4	1.0	2.0	3.0	2.0	1.0	2.0	2.0	1.0	1.0	1.0	1.0
17	EAST BRANCH BRANDYWINE CREEK	High Priority	27	3.61	3.8	2.0	4.0	3.0	2.0	10.0	6.0	5.0	1.0	1.0	1.0	1.0
18	INDIAN RUN	Low Priority	54	2.50	3.2	1.0	2.0	3.0	1.0	10.0	6.0	5.0	1.0	1.0	1.0	1.0
19	EAST BRANCH BRANDYWINE CREEK	Lowest Priority	58	2.37	2.1	1.0	2.0	3.0	4.0	3.0	2.0	2.0	1.0	7.0	1.0	1.0
20	INDIAN RUN	Lowest Priority	60	2.35	2.6	1.0	3.0	3.0	2.0	7.0	4.0	3.0	1.0	1.0	1.0	1.0
21	INDIAN RUN	Low Priority	51	2.59	2.9	2.0	3.0	5.0	1.0	8.0	2.0	3.0	1.0	1.0	1.0	1.0
22	MARSH CREEK	Priority	43	3.01	3.0	3.0	5.0	2.0	4.0	2.0	5.0	3.0	1.0	1.0	5.0	1.0
23	WEST BRANCH BRANDYWINE CREEK	Lowest Priority	58	2.37	1.9	1.0	4.0	3.0	2.0	2.0	2.0	3.0	3.0	1.0	1.0	1.0
24	SHAMONA CREEK	Highest Priority	12	5.05	4.0	5.0	6.0	4.0	3.0	1.0	6.0	5.0	1.0	1.0	9.0	1.0
25	TWO LOG RUN	Lowest Priority	65	2.28	1.7	1.0	3.0	3.0	2.0	2.0	2.0	3.0	1.0	1.0	1.0	1.0
26	CULBERTSON RUN	Priority	41	3.07	3.3	2.0	4.0	8.0	2.0	6.0	6.0	3.0	1.0	1.0	1.0	1.0
27	CULBERTSON RUN	Priority	38	3.26	3.7	1.0	4.0	8.0	2.0	10.0	6.0	4.0	1.0	1.0	1.0	1.0
28	CULBERTSON RUN	Priority	31	3.48	4.1	2.0	5.0	3.0	2.0	10.0	6.0	5.0	1.0	1.0	6.0	1.0
29	EAST BRANCH BRANDYWINE CREEK	Low Priority	48	2.66	1.9	1.0	4.0	3.0	3.0	2.0	3.0	2.0	1.0	1.0	1.0	1.0
30	BEAVER CREEK	High Priority	16	4.50	4.2	3.0	5.0	3.0	3.0	6.0	6.0	5.0	10.0	1.0	4.0	1.0
31	VALLEY CREEK	Highest Priority	3	6.24	5.4	5.0	6.0	3.0	5.0	6.0	6.0	7.0	10.0	1.0	8.0	1.0
32	EAST BRANCH BRANDYWINE CREEK	Priority	40	3.15	2.3	2.0	5.0	3.0	4.0	2.0	2.0	3.0	2.0	1.0	1.0	1.0



Final Prioritization Report

Full Tabular Results

Brandywine Creek



Analysis Unit	Overall Watershed Name	Prioritization Classification	Prioritization Rank (1 to 71)	Overall Prioritization Score	Watershed Health Indicator Scores											
					Watershed Health Category Score	Percent Impervious	Population Density	Percent Wetlands	Percent Hydric Soils	Riparian Buffer Quality	Percent Tree Cover	Critical Habitat Quality	Percentage of stream miles that are HQ or EV	Site Specific Watershed Health Issues per Square Mile	Percent Increase in Impervious Cover	Active Dams per Square Mile
33	CULBERTSON RUN	High Priority	18	4.24	4.5	2.0	6.0	10.0	3.0	10.0	7.0	5.0	1.0	1.0	1.0	1.0
34	EAST BRANCH BRANDYWINE CREEK	Lowest Priority	61	2.34	3.3	2.0	4.0	4.0	3.0	8.0	4.0	4.0	1.0	1.0	1.0	1.0
35	BIRCH RUN	Lowest Priority	71	1.90	1.7	1.0	3.0	4.0	2.0	1.0	2.0	3.0	3.0	1.0	1.0	1.0
36	EAST BRANCH BRANDYWINE CREEK	Lowest Priority	66	2.25	3.0	1.0	3.0	4.0	5.0	9.0	3.0	2.0	1.0	1.0	1.0	1.0
37	EAST BRANCH BRANDYWINE CREEK	Highest Priority	11	5.09	4.4	4.0	7.0	3.0	3.0	2.0	5.0	5.0	10.0	8.0	5.0	1.0
38	WEST BRANCH BRANDYWINE CREEK	High Priority	25	3.67	3.4	2.0	5.0	6.0	5.0	3.0	5.0	4.0	8.0	1.0	2.0	1.0
39	EAST BRANCH BRANDYWINE CREEK	Highest Priority	7	5.36	4.0	4.0	6.0	4.0	5.0	2.0	4.0	4.0	10.0	1.0	4.0	1.0
40	WEST BRANCH BRANDYWINE CREEK	Low Priority	47	2.68	2.6	2.0	4.0	4.0	3.0	2.0	4.0	3.0	5.0	1.0	2.0	1.0
41	ROCK RUN	Priority	28	3.56	4.1	2.0	4.0	3.0	3.0	8.0	6.0	4.0	10.0	1.0	4.0	1.0
42	BROAD RUN	High Priority	15	4.57	3.5	2.0	6.0	4.0	5.0	5.0	6.0	6.0	1.0	1.0	1.0	1.0
43	VALLEY RUN	Highest Priority	6	5.81	6.2	5.0	7.0	7.0	8.0	9.0	6.0	6.0	10.0	3.0	5.0	1.0
44	BUCK RUN	High Priority	21	4.00	3.8	2.0	4.0	4.0	4.0	5.0	6.0	6.0	10.0	2.0	3.0	1.0
45	VALLEY CREEK	High Priority	22	3.76	2.6	1.0	3.0	3.0	5.0	3.0	2.0	3.0	10.0	1.0	4.0	1.0
46	TAYLOR RUN	Highest Priority	5	5.91	4.9	4.0	7.0	4.0	4.0	5.0	6.0	8.0	10.0	1.0	4.0	1.0
47	WEST BRANCH BRANDYWINE CREEK	Highest Priority	2	6.41	6.6	7.0	8.0	9.0	8.0	5.0	5.0	6.0	10.0	1.0	7.0	9.0
48	SUCKER RUN	Highest Priority	4	5.94	6.0	6.0	6.0	8.0	5.0	9.0	6.0	8.0	10.0	1.0	1.0	1.0
49	SUCKER RUN	Highest Priority	8	5.33	5.4	3.0	5.0	7.0	8.0	10.0	6.0	6.0	10.0	5.0	1.0	1.0
50	BROAD RUN	Priority	33	3.36	3.2	2.0	5.0	4.0	5.0	5.0	6.0	3.0	1.0	1.0	1.0	1.0
51	EAST BRANCH BRANDYWINE CREEK	High Priority	19	4.16	3.2	1.0	3.0	3.0	4.0	5.0	6.0	4.0	10.0	1.0	1.0	1.0
52	WEST BRANCH BRANDYWINE CREEK	Priority	36	3.32	3.1	2.0	4.0	6.0	7.0	2.0	5.0	3.0	8.0	1.0	1.0	1.0
53	SUCKER RUN	Highest Priority	1	6.47	6.7	8.0	6.0	10.0	9.0	9.0	4.0	7.0	10.0	1.0	1.0	1.0
54	BLACKHORSE RUN	Highest Priority	10	5.24	4.8	4.0	7.0	4.0	4.0	6.0	6.0	6.0	10.0	1.0	1.0	1.0
55	WEST BRANCH BRANDYWINE CREEK	Priority	32	3.38	2.6	1.0	1.0	3.0	5.0	3.0	6.0	3.0	9.0	1.0	1.0	2.0
56	PLUM RUN	Highest Priority	9	5.28	4.2	3.0	7.0	4.0	4.0	2.0	6.0	6.0	10.0	4.0	5.0	1.0
57	DENNIS RUN	Priority	28	3.56	5.0	2.0	5.0	8.0	5.0	10.0	6.0	5.0	10.0	1.0	7.0	1.0
58	BUCK RUN	Low Priority	51	2.59	2.8	1.0	1.0	7.0	5.0	3.0	6.0	2.0	10.0	1.0	1.0	1.0
59	BIRCH RUN	Lowest Priority	63	2.30	3.2	1.0	1.0	6.0	5.0	5.0	6.0	5.0	10.0	1.0	1.0	1.0
60	RADLEY RUN	Highest Priority	13	4.84	4.8	3.0	5.0	4.0	4.0	8.0	6.0	6.0	10.0	6.0	1.0	1.0
61	BRANDYWINE CREEK	Highest Priority	13	4.84	3.7	2.0	4.0	3.0	4.0	4.0	6.0	3.0	10.0	1.0	1.0	8.0
62	DOE RUN	Priority	42	3.06	3.7	1.0	1.0	5.0	4.0	9.0	7.0	3.0	10.0	1.0	1.0	1.0
63	DOE RUN	Low Priority	46	2.91	3.8	1.0	1.0	6.0	4.0	8.0	7.0	6.0	10.0	1.0	1.0	1.0
64	POCOPSON CREEK	High Priority	20	4.15	3.4	2.0	4.0	4.0	4.0	4.0	6.0	3.0	10.0	1.0	1.0	1.0
65	BRINTON RUN	Low Priority	53	2.56	2.9	1.0	4.0	4.0	5.0	4.0	4.0	2.0	10.0	1.0	1.0	1.0
66	BENNETTS RUN	Priority	33	3.36	2.8	2.0	4.0	4.0	5.0	2.0	3.0	3.0	10.0	1.0	1.0	1.0
67	HARVEY RUN	High Priority	17	4.41	3.0	2.0	4.0	4.0	9.0	2.0	3.0	2.0	10.0	1.0	2.0	1.0
68	RING RUN	Priority	30	3.53	4.0	2.0	4.0	4.0	5.0	8.0	5.0	4.0	10.0	1.0	1.0	1.0
69	BRANDYWINE CREEK	Priority	35	3.35	2.1	1.0	2.0	3.0	4.0	1.0	3.0	3.0	10.0	1.0	1.0	1.0
70	BEAVER CREEK	High Priority	26	3.66	4.5	2.0	6.0	4.0	5.0	10.0	3.0	3.0	10.0	1.0	6.0	1.0
71	BRANDYWINE CREEK	Low Priority	56	2.44	2.1	1.0	1.0	3.0	5.0	1.0	4.0	3.0	10.0	1.0	1.0	1.0



Final Prioritization Report

Full Tabular Results

Brandywine Creek



Water Quality Indicator Scores

Analysis Unit	Overall Watershed Name	Prioritization Classification	Prioritization Rank (1 to 71)	Overall Prioritization Score	Water Quality Category Score	Estimated Sediment Loading per Square Mile	Estimated Nitrogen Loading per Square Mile	Estimated Phosphorous Loading per Square Mile	Percent of Stream Miles Impaired	Percent of Stream Miles with TMDL	Legacy dams per Square Mile	Sanitary Sewer Overflows per Square Mile	Site Specific Water Quality Issues per Square Mile	Water Degradation Sources per Square Mile
1	MARSH CREEK	Low Priority	57	2.43	2.3	3.0	3.0	3.0	1.0	10.0	1.0	1.0	1.0	1.0
2	EAST BRANCH BRANDYWINE CREEK	Low Priority	49	2.65	2.6	3.0	1.0	1.0	1.0	10.0	6.0	3.0	1.0	3.0
3	EAST BRANCH BRANDYWINE CREEK	Low Priority	44	2.93	4.2	2.0	1.0	1.0	10.0	10.0	1.0	5.0	1.0	1.0
4	LYONS RUN	Lowest Priority	69	2.13	2.0	3.0	2.0	2.0	1.0	10.0	1.0	1.0	1.0	1.0
5	BLACK HORSE CREEK	High Priority	24	3.73	3.5	4.0	4.0	4.0	1.0	10.0	8.0	1.0	1.0	4.0
6	EAST BRANCH BRANDYWINE CREEK	Priority	36	3.32	4.4	1.0	1.0	1.0	10.0	10.0	4.0	5.0	1.0	3.0
7	EAST BRANCH BRANDYWINE CREEK	Lowest Priority	68	2.14	2.2	4.0	2.0	2.0	1.0	10.0	1.0	1.0	1.0	1.0
8	WEST BRANCH BRANDYWINE CREEK	High Priority	22	3.76	5.2	2.0	4.0	4.0	10.0	10.0	1.0	5.0	2.0	5.0
9	EAST BRANCH BRANDYWINE CREEK	Low Priority	55	2.45	2.0	4.0	1.0	1.0	1.0	10.0	1.0	1.0	1.0	1.0
10	EAST BRANCH BRANDYWINE CREEK	Lowest Priority	63	2.30	2.6	5.0	1.0	1.0	1.0	10.0	6.0	1.0	1.0	1.0
11	MARSH CREEK	Low Priority	50	2.61	2.7	2.0	4.0	4.0	1.0	10.0	2.0	1.0	1.0	5.0
12	EAST BRANCH BRANDYWINE CREEK	Low Priority	44	2.93	3.9	1.0	1.0	1.0	6.0	10.0	8.0	5.0	1.0	5.0
13	EAST BRANCH BRANDYWINE CREEK	Priority	38	3.26	4.0	1.0	1.0	1.0	10.0	10.0	1.0	5.0	1.0	1.0
14	EAST BRANCH BRANDYWINE CREEK	Lowest Priority	67	2.22	2.4	2.0	1.0	1.0	1.0	10.0	6.0	2.0	1.0	4.0
15	EAST BRANCH BRANDYWINE CREEK	Lowest Priority	61	2.34	2.0	1.0	2.0	2.0	1.0	10.0	6.0	1.0	1.0	1.0
16	EAST BRANCH BRANDYWINE CREEK	Lowest Priority	70	2.08	2.7	4.0	2.0	2.0	1.0	10.0	7.0	1.0	1.0	1.0
17	EAST BRANCH BRANDYWINE CREEK	High Priority	27	3.61	4.4	1.0	3.0	3.0	10.0	10.0	1.0	5.0	1.0	1.0
18	INDIAN RUN	Low Priority	54	2.50	2.2	1.0	2.0	2.0	1.0	10.0	1.0	4.0	1.0	4.0
19	EAST BRANCH BRANDYWINE CREEK	Lowest Priority	58	2.37	2.7	6.0	2.0	2.0	1.0	10.0	1.0	1.0	1.0	1.0
20	INDIAN RUN	Lowest Priority	60	2.35	2.6	4.0	2.0	2.0	1.0	10.0	1.0	1.0	1.0	5.0
21	INDIAN RUN	Low Priority	51	2.59	2.5	1.0	4.0	4.0	1.0	10.0	4.0	1.0	1.0	3.0
22	MARSH CREEK	Priority	43	3.01	3.5	2.0	5.0	5.0	1.0	10.0	5.0	3.0	1.0	7.0
23	WEST BRANCH BRANDYWINE CREEK	Lowest Priority	58	2.37	2.2	1.0	2.0	2.0	1.0	10.0	7.0	3.0	1.0	1.0
24	SHAMONA CREEK	Highest Priority	12	5.05	7.0	5.0	7.0	7.0	10.0	10.0	7.0	6.0	1.0	6.0
25	TWO LOG RUN	Lowest Priority	65	2.28	2.4	2.0	2.0	2.0	1.0	10.0	4.0	5.0	1.0	1.0
26	CULBERTSON RUN	Priority	41	3.07	3.3	5.0	3.0	3.0	1.0	10.0	10.0	1.0	1.0	1.0
27	CULBERTSON RUN	Priority	38	3.26	4.1	2.0	2.0	2.0	10.0	10.0	1.0	1.0	1.0	1.0
28	CULBERTSON RUN	Priority	31	3.48	4.3	1.0	4.0	4.0	10.0	10.0	1.0	1.0	1.0	1.0
29	EAST BRANCH BRANDYWINE CREEK	Low Priority	48	2.66	1.8	1.0	3.0	3.0	1.0	10.0	1.0	1.0	1.0	1.0
30	BEAVER CREEK	High Priority	16	4.50	4.1	2.0	5.0	5.0	3.0	10.0	5.0	7.0	1.0	5.0
31	VALLEY CREEK	Highest Priority	3	6.24	7.8	8.0	8.0	8.0	10.0	10.0	6.0	6.0	1.0	6.0
32	EAST BRANCH BRANDYWINE CREEK	Priority	40	3.15	4.4	3.0	5.0	5.0	4.0	10.0	10.0	5.0	1.0	1.0



Final Prioritization Report

Full Tabular Results

Brandywine Creek

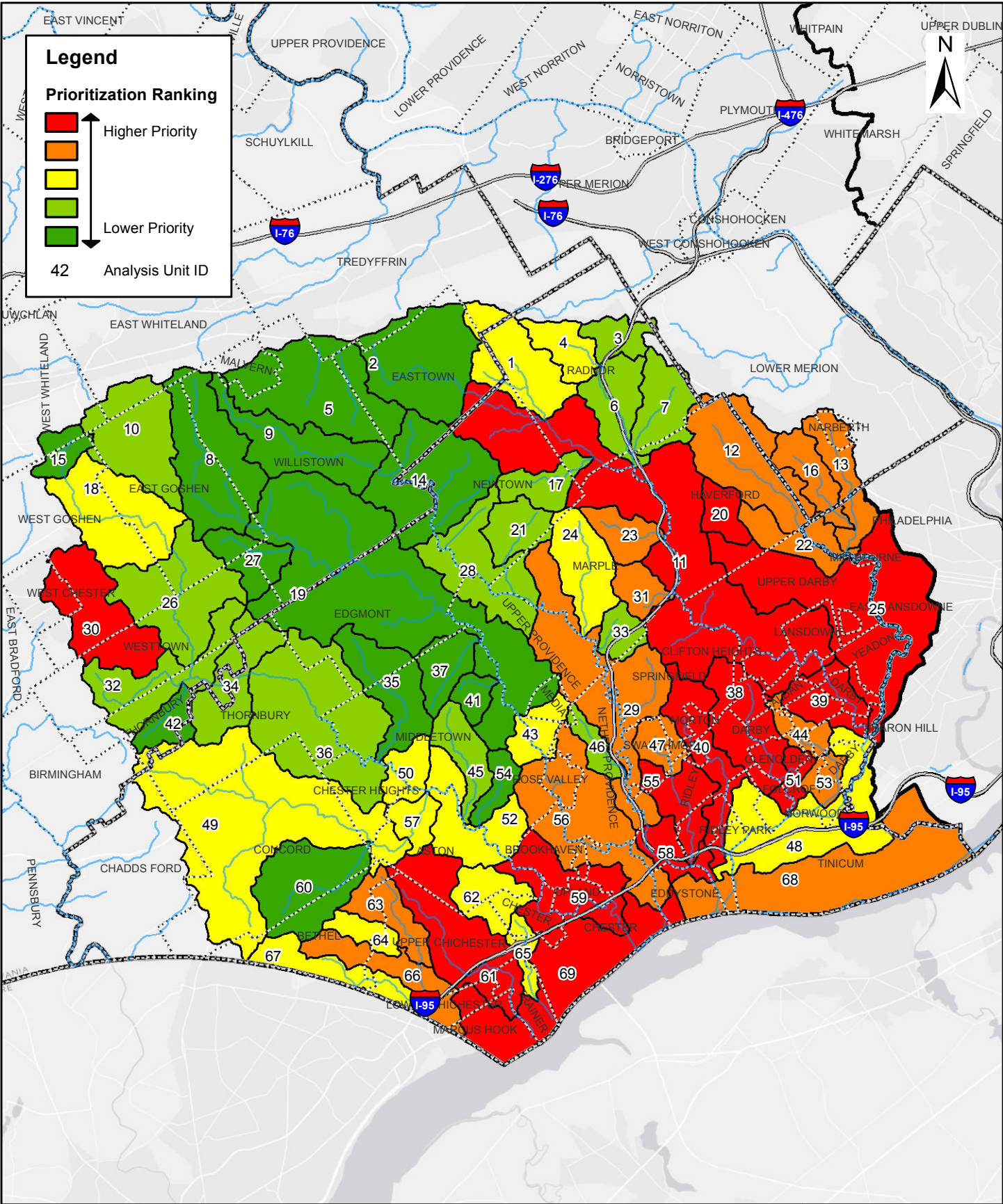


Water Quality Indicator Scores

Analysis Unit	Overall Watershed Name	Prioritization Classification	Prioritization Rank (1 to 71)	Overall Prioritization Score	Water Quality Category Score	Estimated Sediment Loading per Square Mile	Estimated Nitrogen Loading per Square Mile	Estimated Phosphorous Loading per Square Mile	Percent of Stream Miles Impaired	Percent of Stream Miles with TMDL	Legacy dams per Square Mile	Sanitary Sewer Overflows per Square Mile	Site Specific Water Quality Issues per Square Mile	Water Degradation Sources per Square Mile
33	CULBERTSON RUN	High Priority	18	4.24	5.0	1.0	5.0	5.0	10.0	10.0	7.0	1.0	1.0	1.0
34	EAST BRANCH BRANDYWINE CREEK	Lowest Priority	61	2.34	2.0	1.0	4.0	4.0	1.0	10.0	1.0	1.0	1.0	1.0
35	BIRCH RUN	Lowest Priority	71	1.90	1.8	1.0	1.0	1.0	1.0	10.0	3.0	1.0	1.0	3.0
36	EAST BRANCH BRANDYWINE CREEK	Lowest Priority	66	2.25	1.8	2.0	2.0	2.0	1.0	10.0	1.0	1.0	1.0	1.0
37	EAST BRANCH BRANDYWINE CREEK	Highest Priority	11	5.09	5.9	5.0	7.0	7.0	7.0	10.0	1.0	7.0	1.0	6.0
38	WEST BRANCH BRANDYWINE CREEK	High Priority	25	3.67	4.9	6.0	5.0	5.0	4.0	10.0	3.0	7.0	1.0	4.0
39	EAST BRANCH BRANDYWINE CREEK	Highest Priority	7	5.36	5.7	7.0	7.0	7.0	4.0	10.0	1.0	7.0	1.0	7.0
40	WEST BRANCH BRANDYWINE CREEK	Low Priority	47	2.68	2.7	2.0	3.0	3.0	1.0	10.0	8.0	3.0	1.0	1.0
41	ROCK RUN	Priority	28	3.56	3.6	3.0	5.0	5.0	1.0	10.0	6.0	5.0	1.0	4.0
42	BROAD RUN	High Priority	15	4.57	6.6	6.0	6.0	6.0	10.0	10.0	6.0	8.0	1.0	1.0
43	VALLEY RUN	Highest Priority	6	5.81	5.8	6.0	8.0	8.0	5.0	10.0	1.0	9.0	1.0	5.0
44	BUCK RUN	High Priority	21	4.00	4.8	4.0	4.0	4.0	5.0	10.0	7.0	6.0	2.0	4.0
45	VALLEY CREEK	High Priority	22	3.76	4.4	5.0	3.0	3.0	4.0	10.0	7.0	8.0	1.0	1.0
46	TAYLOR RUN	Highest Priority	5	5.91	7.1	5.0	7.0	7.0	10.0	10.0	6.0	8.0	1.0	6.0
47	WEST BRANCH BRANDYWINE CREEK	Highest Priority	2	6.41	7.6	8.0	8.0	8.0	7.0	9.0	6.0	10.0	1.0	9.0
48	SUCKER RUN	Highest Priority	4	5.94	7.3	5.0	7.0	7.0	10.0	10.0	8.0	7.0	1.0	7.0
49	SUCKER RUN	Highest Priority	8	5.33	6.3	6.0	5.0	5.0	10.0	10.0	1.0	6.0	1.0	5.0
50	BROAD RUN	Priority	33	3.36	4.0	5.0	3.0	3.0	2.0	10.0	5.0	7.0	1.0	4.0
51	EAST BRANCH BRANDYWINE CREEK	High Priority	19	4.16	4.4	6.0	3.0	3.0	3.0	10.0	4.0	8.0	1.0	4.0
52	WEST BRANCH BRANDYWINE CREEK	Priority	36	3.32	3.6	5.0	3.0	3.0	3.0	10.0	2.0	5.0	1.0	2.0
53	SUCKER RUN	Highest Priority	1	6.47	8.4	7.0	9.0	9.0	10.0	10.0	9.0	7.0	1.0	9.0
54	BLACKHORSE RUN	Highest Priority	10	5.24	7.0	7.0	7.0	7.0	10.0	10.0	1.0	9.0	1.0	4.0
55	WEST BRANCH BRANDYWINE CREEK	Priority	32	3.38	3.5	4.0	2.0	2.0	4.0	10.0	3.0	6.0	1.0	1.0
56	PLUM RUN	Highest Priority	9	5.28	6.5	3.0	6.0	6.0	10.0	10.0	4.0	8.0	6.0	5.0
57	DENNIS RUN	Priority	28	3.56	3.1	2.0	3.0	3.0	1.0	10.0	1.0	8.0	1.0	6.0
58	BUCK RUN	Low Priority	51	2.59	2.8	5.0	1.0	1.0	1.0	10.0	5.0	1.0	1.0	3.0
59	BIRCH RUN	Lowest Priority	63	2.30	1.8	2.0	1.0	1.0	1.0	10.0	1.0	1.0	1.0	2.0
60	RADLEY RUN	Highest Priority	13	4.84	5.8	3.0	5.0	5.0	10.0	10.0	3.0	5.0	4.0	4.0
61	BRANDYWINE CREEK	Highest Priority	13	4.84	5.2	5.0	4.0	4.0	6.0	10.0	6.0	6.0	1.0	5.0
62	DOE RUN	Priority	42	3.06	3.0	4.0	1.0	1.0	3.0	10.0	4.0	3.0	1.0	2.0
63	DOE RUN	Low Priority	46	2.91	2.6	2.0	2.0	2.0	1.0	10.0	7.0	1.0	1.0	4.0
64	POCOPSON CREEK	High Priority	20	4.15	5.1	4.0	3.0	3.0	10.0	10.0	4.0	4.0	1.0	1.0
65	BRINTON RUN	Low Priority	53	2.56	2.2	2.0	2.0	2.0	1.0	10.0	6.0	1.0	1.0	1.0
66	BENNETTS RUN	Priority	33	3.36	3.7	5.0	4.0	4.0	1.0	10.0	4.0	4.0	1.0	5.0
67	HARVEY RUN	High Priority	17	4.41	6.1	7.0	4.0	4.0	10.0	10.0	6.0	1.0	1.0	3.0
68	RING RUN	Priority	30	3.53	3.1	2.0	5.0	5.0	1.0	10.0	1.0	4.0	1.0	5.0
69	BRANDYWINE CREEK	Priority	35	3.35	4.0	6.0	3.0	3.0	4.0	10.0	1.0	3.0	1.0	3.0
70	BEAVER CREEK	High Priority	26	3.66	3.4	5.0	5.0	5.0	1.0	10.0	1.0	1.0	1.0	4.0
71	BRANDYWINE CREEK	Low Priority	56	2.44	2.5	4.0	1.0	1.0	1.0	10.0	7.0	1.0	1.0	1.0

Appendix **B**

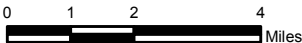
Direct-to-Delaware Tributaries



**Final Prioritization Report
 Prioritization Exhibit
 Direct-to-Delaware Tributaries**



AECOM



August 2012



Final Prioritization Report

Tabular Summary

Direct-to-Delaware Tributaries



Analysis Unit	Overall Watershed Name	Prioritization Classification	Prioritization Rank (1 to 69)	Overall Prioritization Score	Flooding Category Score	Watershed Health Category Score	Water Quality Category Score
1	LITTLE DARBY CREEK	Priority	33	5.03	5.4	5.0	4.2
2	DARBY CREEK	Lowest Priority	63	3.42	3.3	3.8	3.3
3	HARDINGS RUN	Low Priority	45	4.51	3.6	6.3	4.5
4	ITHAN CREEK	Priority	31	5.23	5.6	5.9	3.9
5	CRUM CREEK	Lowest Priority	64	3.38	3.4	3.4	3.3
6	ITHAN CREEK	Low Priority	50	4.38	4.6	4.2	4.1
7	MEADOWBROOK RUN	Low Priority	50	4.38	4.0	5.4	4.1
8	RIDLEY CREEK	Lowest Priority	62	3.46	3.8	3.2	3.1
9	CRUM CREEK	Lowest Priority	66	3.17	4.0	2.2	2.5
10	RIDLEY CREEK	Low Priority	54	4.13	3.8	5.2	3.6
11	DARBY CREEK	Highest Priority	11	6.48	7.2	5.7	5.6
12	COBBS CREEK	High Priority	18	5.81	5.0	7.2	5.9
13	EAST BRANCH INDIAN CREEK	High Priority	22	5.63	4.3	6.9	7.0
14	CRUM CREEK	Lowest Priority	57	3.76	4.1	3.2	3.6
15	EAST BRANCH CHESTER CREEK	Lowest Priority	59	3.69	3.2	5.6	2.8
16	WEST BRANCH INDIAN CREEK	High Priority	24	5.53	4.7	6.9	5.8
17	FOXES RUN	Low Priority	44	4.56	4.2	5.4	4.4
18	EAST BRANCH CHESTER CREEK	Priority	37	4.89	5.0	5.8	3.8
19	RIDLEY CREEK	Lowest Priority	56	3.98	4.8	3.0	3.4
20	COBBS CREEK	Highest Priority	12	6.40	6.3	7.7	5.2
21	HUNTER RUN	Low Priority	45	4.51	3.8	5.9	4.6
22	COBBS CREEK	High Priority	17	5.98	5.1	7.3	6.4
23	LANGFORD RUN	High Priority	25	5.50	4.4	7.2	6.1
24	TROUT RUN	Priority	40	4.71	3.8	5.1	6.2
25	COBBS CREEK	Highest Priority	2	7.50	7.9	7.7	6.5
26	EAST BRANCH CHESTER CREEK	Low Priority	43	4.58	5.2	4.5	3.4
27	HUNTERS RUN	Lowest Priority	68	2.79	2.3	3.3	3.3
28	CRUM CREEK	Low Priority	52	4.34	5.2	3.4	3.7
29	CRUM CREEK	High Priority	27	5.36	4.9	5.4	6.2
30	EAST BRANCH CHESTER CREEK	Highest Priority	9	6.64	6.1	7.0	7.4
31	WHETSTONE RUN	High Priority	20	5.76	5.3	6.7	5.7
32	EAST BRANCH CHESTER CREEK	Low Priority	55	4.01	3.8	4.6	3.8
33	HOTLAND RUN	Low Priority	49	4.41	2.8	6.2	5.7
34	EAST BRANCH CHESTER CREEK	Low Priority	53	4.16	4.7	3.6	3.6
35	ROCKY RUN	Lowest Priority	58	3.73	3.9	3.6	3.5
36	EAST BRANCH CHESTER CREEK	Low Priority	48	4.42	4.4	3.9	4.9
37	DISMAL RUN	Lowest Priority	69	2.69	2.8	3.0	2.0
38	MUCKINIPATTIS CREEK	Highest Priority	6	6.92	6.7	7.9	6.4
39	DARBY CREEK	Highest Priority	1	7.88	8.6	7.2	7.2
40	STONY CREEK	Highest Priority	3	7.23	7.2	7.4	7.2
41	SPRING RUN	Lowest Priority	67	3.11	3.0	3.3	3.2
42	WALN RUN	Lowest Priority	65	3.26	2.7	3.7	3.9
43	RIDLEY CREEK	Priority	30	5.25	4.9	5.8	5.4
44	HERMESPROTA CREEK	High Priority	15	6.06	5.4	7.9	5.6
45	CHROME RUN	Low Priority	42	4.61	4.7	5.4	3.6
46	DICKS RUN	Low Priority	47	4.44	3.8	4.8	5.4
47	LITTLE CRUM CREEK	High Priority	16	6.01	6.0	6.2	5.8
48	DARBY CREEK	Priority	29	5.31	5.6	6.0	4.2



Final Prioritization Report

Tabular Summary

Direct-to-Delaware Tributaries



Analysis Unit	Overall Watershed Name	Prioritization Classification	Prioritization Rank (1 to 69)	Overall Prioritization Score	Flooding Category Score	Watershed Health Category Score	Water Quality Category Score
49	WEST BRANCH CHESTER CREEK	Priority	35	4.99	5.6	4.4	4.2
50	CHESTER CREEK	Priority	36	4.93	5.4	3.1	5.6
51	MUCKINIPATTIS CREEK	Highest Priority	7	6.73	6.6	6.7	7.0
52	CHESTER CREEK	Priority	33	5.03	4.8	5.2	5.2
53	HERMESPROTA CREEK	High Priority	23	5.58	5.0	5.8	6.6
54	CRUM RUN	Lowest Priority	61	3.56	4.0	3.7	2.4
55	LITTLE CRUM CREEK	Highest Priority	5	6.98	6.8	7.4	6.9
56	LITTLE CRUM CREEK	High Priority	14	6.14	6.4	6.1	5.7
57	WEST BRANCH CHESTER CREEK	Priority	32	5.22	5.4	4.8	5.4
58	LITTLE CRUM CREEK	Highest Priority	8	6.72	6.0	7.2	7.7
59	CHESTER CREEK	Highest Priority	4	7.14	8.4	6.7	5.1
60	GREEN CREEK	Lowest Priority	60	3.60	3.5	4.2	3.2
61	MARCUS HOOK CREEK	Highest Priority	10	6.53	6.2	6.8	7.0
62	BALDWIN RUN	Priority	38	4.86	4.4	6.0	4.6
63	EAST BRANCH NAAMAN CREEK	High Priority	21	5.71	5.2	5.7	6.7
64	SPRING RUN	Priority	39	4.83	4.2	5.3	5.6
65	STONE CREEK	Priority	28	5.34	4.9	6.9	4.8
66	NAAMAN CREEK	High Priority	26	5.43	4.6	5.8	6.6
67	WEST BRANCH NAAMAN CREEK	Priority	41	4.63	3.2	5.6	6.4
68	DELAWARE RIVER	High Priority	19	5.77	5.7	5.8	5.9
69	DELAWARE RIVER	Highest Priority	13	6.26	5.6	7.4	6.5



Final Prioritization Report

Full Tabular Results

Direct-to-Delaware Tributaries



Flooding Indicator Scores

Analysis Unit	Overall Watershed Name	Prioritization Classification	Prioritization Rank (1 to 69)	Overall Prioritization Score	Flooding Category Score	NFIP Claims per Square Mile	FEMA Risk Decile	Average Annualized Flood Loss per Square Mile	Percent Population in Floodplain	Percent Highly Erodible Land	Repetitive Loss Properties per Square Mile	Site Specific Flood Issues per Square Mile
1	LITTLE DARBY CREEK	Priority	33	5.03	5.4	5.0	7.0	6.0	2.0	10.0	3.0	5.0
2	DARBY CREEK	Lowest Priority	63	3.42	3.3	3.0	7.0	5.0	2.0	3.0	1.0	1.0
3	HARDINGS RUN	Low Priority	45	4.51	3.6	4.0	5.0	3.0	1.0	10.0	1.0	1.0
4	ITHAN CREEK	Priority	31	5.23	5.6	6.0	6.0	5.0	2.0	10.0	4.0	7.0
5	CRUM CREEK	Lowest Priority	64	3.38	3.4	4.0	7.0	3.0	3.0	2.0	2.0	5.0
6	ITHAN CREEK	Low Priority	50	4.38	4.6	5.0	6.0	6.0	2.0	10.0	1.0	1.0
7	MEADOWBROOK RUN	Low Priority	50	4.38	4.0	5.0	7.0	4.0	2.0	8.0	1.0	1.0
8	RIDLEY CREEK	Lowest Priority	62	3.46	3.8	3.0	7.0	6.0	4.0	2.0	2.0	1.0
9	CRUM CREEK	Lowest Priority	66	3.17	4.0	4.0	5.0	5.0	3.0	3.0	3.0	7.0
10	RIDLEY CREEK	Low Priority	54	4.13	3.8	2.0	6.0	7.0	3.0	2.0	1.0	9.0
11	DARBY CREEK	Highest Priority	11	6.48	7.2	7.0	10.0	9.0	2.0	10.0	5.0	6.0
12	COBBS CREEK	High Priority	18	5.81	5.0	7.0	9.0	7.0	1.0	3.0	4.0	1.0
13	EAST BRANCH INDIAN CREEK	High Priority	22	5.63	4.3	7.0	7.0	1.0	1.0	3.0	6.0	6.0
14	CRUM CREEK	Lowest Priority	57	3.76	4.1	2.0	6.0	6.0	3.0	8.0	1.0	1.0
15	EAST BRANCH CHESTER CREEK	Lowest Priority	59	3.69	3.2	4.0	5.0	6.0	2.0	2.0	1.0	1.0
16	WEST BRANCH INDIAN CREEK	High Priority	24	5.53	4.7	9.0	7.0	1.0	2.0	2.0	8.0	1.0
17	FOXES RUN	Low Priority	44	4.56	4.2	3.0	6.0	5.0	2.0	10.0	1.0	1.0
18	EAST BRANCH CHESTER CREEK	Priority	37	4.89	5.0	5.0	6.0	8.0	3.0	3.0	4.0	4.0
19	RIDLEY CREEK	Lowest Priority	56	3.98	4.8	4.0	8.0	6.0	2.0	6.0	3.0	2.0
20	COBBS CREEK	Highest Priority	12	6.40	6.3	8.0	7.0	6.0	2.0	10.0	6.0	1.0
21	HUNTER RUN	Low Priority	45	4.51	3.8	4.0	6.0	3.0	1.0	10.0	1.0	1.0
22	COBBS CREEK	High Priority	17	5.98	5.1	7.0	8.0	1.0	1.0	9.0	6.0	1.0
23	LANGFORD RUN	High Priority	25	5.50	4.4	6.0	7.0	4.0	1.0	10.0	1.0	1.0
24	TROUT RUN	Priority	40	4.71	3.8	5.0	7.0	6.0	1.0	4.0	1.0	1.0
25	COBBS CREEK	Highest Priority	2	7.50	7.9	8.0	10.0	9.0	1.0	10.0	8.0	4.0
26	EAST BRANCH CHESTER CREEK	Low Priority	43	4.58	5.2	5.0	7.0	8.0	3.0	2.0	4.0	9.0
27	HUNTERS RUN	Lowest Priority	68	2.79	2.3	1.0	5.0	3.0	1.0	3.0	1.0	1.0
28	CRUM CREEK	Low Priority	52	4.34	5.2	4.0	7.0	6.0	2.0	9.0	3.0	4.0
29	CRUM CREEK	High Priority	27	5.36	4.9	5.0	8.0	8.0	2.0	4.0	3.0	1.0
30	EAST BRANCH CHESTER CREEK	Highest Priority	9	6.64	6.1	7.0	7.0	9.0	3.0	3.0	6.0	6.0
31	WHETSTONE RUN	High Priority	20	5.76	5.3	5.0	6.0	5.0	1.0	10.0	5.0	1.0
32	EAST BRANCH CHESTER CREEK	Low Priority	55	4.01	3.8	3.0	6.0	7.0	2.0	3.0	1.0	7.0
33	HOTLAND RUN	Low Priority	49	4.41	2.8	1.0	5.0	5.0	1.0	4.0	1.0	1.0
34	EAST BRANCH CHESTER CREEK	Low Priority	53	4.16	4.7	4.0	6.0	3.0	3.0	10.0	3.0	5.0
35	ROCKY RUN	Lowest Priority	58	3.73	3.9	1.0	6.0	4.0	3.0	10.0	1.0	1.0
36	EAST BRANCH CHESTER CREEK	Low Priority	48	4.42	4.4	3.0	7.0	6.0	1.0	10.0	1.0	1.0
37	DISMAL RUN	Lowest Priority	69	2.69	2.8	1.0	4.0	2.0	1.0	9.0	1.0	1.0



Final Prioritization Report

Full Tabular Results

Direct-to-Delaware Tributaries



Flooding Indicator Scores

Analysis Unit	Overall Watershed Name	Prioritization Classification	Prioritization Rank (1 to 69)	Overall Prioritization Score	Flooding Category Score	NFIP Claims per Square Mile	FEMA Risk Decile	Average Annualized Flood Loss per Square Mile	Percent Population in Floodplain	Percent Highly Erodible Land	Repetitive Loss Properties per Square Mile	Site Specific Flood Issues per Square Mile
38	MUCKINIPATTIS CREEK	Highest Priority	6	6.92	6.7	7.0	8.0	9.0	2.0	10.0	5.0	1.0
39	DARBY CREEK	Highest Priority	1	7.88	8.6	10.0	8.0	10.0	3.0	10.0	10.0	1.0
40	STONY CREEK	Highest Priority	3	7.23	7.2	8.0	8.0	8.0	3.0	10.0	6.0	5.0
41	SPRING RUN	Lowest Priority	67	3.11	3.0	1.0	2.0	4.0	1.0	9.0	1.0	1.0
42	WALN RUN	Lowest Priority	65	3.26	2.7	1.0	3.0	5.0	4.0	3.0	1.0	1.0
43	RIDLEY CREEK	Priority	30	5.25	4.9	5.0	7.0	8.0	1.0	9.0	1.0	1.0
44	HERMESPROTA CREEK	High Priority	15	6.06	5.4	6.0	7.0	4.0	1.0	10.0	5.0	1.0
45	CHROME RUN	Low Priority	42	4.61	4.7	6.0	5.0	7.0	2.0	3.0	5.0	1.0
46	DICKS RUN	Low Priority	47	4.44	3.8	5.0	6.0	2.0	2.0	10.0	1.0	1.0
47	LITTLE CRUM CREEK	High Priority	16	6.01	6.0	7.0	7.0	5.0	2.0	10.0	6.0	1.0
48	DARBY CREEK	Priority	29	5.31	5.6	7.0	8.0	8.0	4.0	4.0	4.0	1.0
49	WEST BRANCH CHESTER CREEK	Priority	35	4.99	5.6	5.0	8.0	6.0	2.0	10.0	4.0	1.0
50	CHESTER CREEK	Priority	36	4.93	5.4	6.0	5.0	8.0	2.0	5.0	6.0	1.0
51	MUCKINIPATTIS CREEK	Highest Priority	7	6.73	6.6	6.0	6.0	10.0	3.0	10.0	5.0	1.0
52	CHESTER CREEK	Priority	33	5.03	4.8	4.0	6.0	8.0	3.0	9.0	1.0	1.0
53	HERMESPROTA CREEK	High Priority	23	5.58	5.0	6.0	6.0	8.0	4.0	8.0	1.0	1.0
54	CRUM RUN	Lowest Priority	61	3.56	4.0	6.0	5.0	2.0	1.0	6.0	5.0	1.0
55	LITTLE CRUM CREEK	Highest Priority	5	6.98	6.8	7.0	7.0	9.0	2.0	10.0	6.0	1.0
56	LITTLE CRUM CREEK	High Priority	14	6.14	6.4	6.0	9.0	10.0	3.0	9.0	3.0	1.0
57	WEST BRANCH CHESTER CREEK	Priority	32	5.22	5.4	7.0	4.0	4.0	2.0	10.0	6.0	1.0
58	LITTLE CRUM CREEK	Highest Priority	8	6.72	6.0	7.0	6.0	7.0	2.0	10.0	5.0	1.0
59	CHESTER CREEK	Highest Priority	4	7.14	8.4	10.0	8.0	10.0	4.0	10.0	9.0	1.0
60	GREEN CREEK	Lowest Priority	60	3.60	3.5	2.0	5.0	4.0	1.0	9.0	1.0	1.0
61	MARCUS HOOK CREEK	Highest Priority	10	6.53	6.2	6.0	8.0	7.0	2.0	10.0	5.0	1.0
62	BALDWIN RUN	Priority	38	4.86	4.4	4.0	6.0	6.0	1.0	10.0	1.0	1.0
63	EAST BRANCH NAAMAN CREEK	High Priority	21	5.71	5.2	4.0	5.0	6.0	3.0	10.0	4.0	1.0
64	SPRING RUN	Priority	39	4.83	4.2	6.0	4.0	4.0	3.0	4.0	5.0	1.0
65	STONEY CREEK	Priority	28	5.34	4.9	7.0	5.0	2.0	2.0	10.0	5.0	1.0
66	NAAMAN CREEK	High Priority	26	5.43	4.6	5.0	6.0	6.0	2.0	7.0	3.0	1.0
67	WEST BRANCH NAAMAN CREEK	Priority	41	4.63	3.2	1.0	6.0	7.0	1.0	3.0	1.0	1.0
68	DELAWARE RIVER	High Priority	19	5.77	5.7	5.0	6.0	5.0	10.0	10.0	3.0	1.0
69	DELAWARE RIVER	Highest Priority	13	6.26	5.6	6.0	9.0	5.0	1.0	10.0	4.0	1.0



Final Prioritization Report

Full Tabular Results

Direct-to-Delaware Tributaries



Analysis Unit	Overall Watershed Name	Prioritization Classification	Prioritization Rank (1 to 69)	Overall Prioritization Score	Watershed Health Indicator Scores											
					Watershed Health Category Score	Percent Impervious	Population Density	Percent Wetlands	Percent Hydric Soils	Riparian Buffer Quality	Percent Tree Cover	Critical Habitat Quality	Percentage of stream miles that are HO or EV	Site Specific Watershed Health Issues per Square Mile	Percent Increase in Impervious Cover	Active Dams per Square Mile
1	LITTLE DARBY CREEK	Priority	33	5.03	5.0	4.0	7.0	4.0	7.0	7.0	6.0	6.0	10.0	1.0	1.0	1.0
2	DARBY CREEK	Lowest Priority	63	3.42	4.2	3.0	6.0	4.0	5.0	3.0	4.0	7.0	10.0	1.0	1.0	1.0
3	HARDINGS RUN	Low Priority	45	4.51	6.2	7.0	7.0	4.0	4.0	9.0	5.0	9.0	10.0	1.0	3.0	1.0
4	ITHAN CREEK	Priority	31	5.23	5.6	5.0	7.0	10.0	7.0	9.0	4.0	9.0	10.0	1.0	1.0	1.0
5	CRUM CREEK	Lowest Priority	64	3.38	3.7	3.0	6.0	3.0	3.0	5.0	4.0	4.0	1.0	1.0	2.0	1.0
6	ITHAN CREEK	Low Priority	50	4.38	4.4	3.0	6.0	3.0	8.0	5.0	5.0	5.0	10.0	1.0	1.0	1.0
7	MEADOWBROOK RUN	Low Priority	50	4.38	4.9	5.0	8.0	9.0	10.0	4.0	6.0	5.0	10.0	1.0	1.0	1.0
8	RIDLEY CREEK	Lowest Priority	62	3.46	3.9	2.0	5.0	3.0	2.0	4.0	6.0	5.0	1.0	1.0	4.0	1.0
9	CRUM CREEK	Lowest Priority	66	3.17	2.8	1.0	3.0	4.0	2.0	3.0	5.0	3.0	1.0	1.0	1.0	1.0
10	RIDLEY CREEK	Low Priority	54	4.13	5.6	4.0	6.0	4.0	4.0	10.0	6.0	7.0	1.0	6.0	4.0	1.0
11	DARBY CREEK	Highest Priority	11	6.48	5.3	6.0	8.0	8.0	10.0	4.0	6.0	7.0	10.0	1.0	1.0	2.0
12	COBBS CREEK	High Priority	18	5.81	6.8	7.0	9.0	9.0	10.0	10.0	6.0	9.0	10.0	1.0	2.0	1.0
13	EAST BRANCH INDIAN CREEK	High Priority	22	5.63	6.7	8.0	9.0	6.0	8.0	8.0	6.0	9.0	10.0	1.0	1.0	1.0
14	CRUM CREEK	Lowest Priority	57	3.76	3.3	2.0	3.0	5.0	5.0	5.0	5.0	3.0	4.0	1.0	2.0	1.0
15	EAST BRANCH CHESTER CREEK	Lowest Priority	59	3.69	6.0	4.0	8.0	4.0	5.0	10.0	6.0	8.0	10.0	1.0	1.0	1.0
16	WEST BRANCH INDIAN CREEK	High Priority	24	5.53	6.6	7.0	9.0	9.0	8.0	9.0	6.0	9.0	10.0	1.0	1.0	1.0
17	FOXES RUN	Low Priority	44	4.56	5.5	4.0	7.0	5.0	10.0	8.0	5.0	9.0	10.0	1.0	1.0	1.0
18	EAST BRANCH CHESTER CREEK	Priority	37	4.89	6.1	5.0	6.0	3.0	3.0	10.0	6.0	7.0	10.0	1.0	7.0	1.0
19	RIDLEY CREEK	Lowest Priority	56	3.98	3.8	2.0	5.0	4.0	5.0	4.0	3.0	3.0	1.0	1.0	2.0	5.0
20	COBBS CREEK	Highest Priority	12	6.40	7.4	9.0	9.0	10.0	10.0	9.0	7.0	9.0	10.0	1.0	1.0	1.0
21	HUNTER RUN	Low Priority	45	4.51	6.1	5.0	7.0	4.0	8.0	9.0	4.0	5.0	10.0	1.0	9.0	1.0
22	COBBS CREEK	High Priority	17	5.98	7.3	9.0	10.0	10.0	9.0	6.0	7.0	8.0	10.0	1.0	1.0	1.0
23	LANGFORD RUN	High Priority	25	5.50	6.9	8.0	8.0	10.0	10.0	9.0	6.0	8.0	10.0	1.0	1.0	1.0
24	TROUT RUN	Priority	40	4.71	4.6	4.0	7.0	10.0	10.0	5.0	5.0	7.0	10.0	1.0	1.0	1.0
25	COBBS CREEK	Highest Priority	2	7.50	8.0	10.0	10.0	8.0	10.0	5.0	8.0	9.0	10.0	1.0	1.0	4.0
26	EAST BRANCH CHESTER CREEK	Low Priority	43	4.58	4.8	3.0	7.0	3.0	4.0	6.0	6.0	7.0	10.0	1.0	2.0	1.0
27	HUNTERS RUN	Lowest Priority	68	2.79	4.0	3.0	6.0	4.0	3.0	1.0	4.0	6.0	1.0	1.0	9.0	1.0
28	CRUM CREEK	Low Priority	52	4.34	3.6	2.0	5.0	2.0	10.0	1.0	5.0	3.0	10.0	1.0	5.0	1.0
29	CRUM CREEK	High Priority	27	5.36	5.2	5.0	7.0	4.0	8.0	5.0	5.0	6.0	10.0	1.0	4.0	7.0
30	EAST BRANCH CHESTER CREEK	Highest Priority	9	6.64	6.8	8.0	7.0	7.0	4.0	10.0	6.0	8.0	10.0	1.0	5.0	1.0
31	WHETSTONE RUN	High Priority	20	5.76	6.3	7.0	7.0	10.0	9.0	10.0	5.0	7.0	10.0	1.0	1.0	1.0
32	EAST BRANCH CHESTER CREEK	Low Priority	55	4.01	4.9	3.0	6.0	4.0	2.0	7.0	6.0	6.0	10.0	1.0	4.0	1.0
33	HOTLAND RUN	Low Priority	49	4.41	5.8	6.0	5.0	9.0	10.0	10.0	4.0	7.0	10.0	1.0	3.0	1.0
34	EAST BRANCH CHESTER CREEK	Low Priority	53	4.16	3.9	2.0	6.0	3.0	5.0	3.0	4.0	3.0	10.0	1.0	8.0	1.0
35	ROCKY RUN	Lowest Priority	58	3.73	3.6	3.0	5.0	8.0	6.0	4.0	5.0	3.0	1.0	1.0	2.0	1.0
36	EAST BRANCH CHESTER CREEK	Low Priority	48	4.42	4.0	2.0	5.0	5.0	7.0	4.0	4.0	3.0	10.0	1.0	3.0	7.0
37	DISMAL RUN	Lowest Priority	69	2.69	3.2	2.0	4.0	10.0	10.0	4.0	2.0	1.0	1.0	1.0	1.0	1.0



Final Prioritization Report

Full Tabular Results

Direct-to-Delaware Tributaries



Analysis Unit	Overall Watershed Name	Prioritization Classification	Prioritization Rank (1 to 69)	Overall Prioritization Score	Watershed Health Indicator Scores											
					Watershed Health Category Score	Percent Impervious	Population Density	Percent Wetlands	Percent Hydric Soils	Riparian Buffer Quality	Percent Tree Cover	Critical Habitat Quality	Percentage of stream miles that are HQ or EV	Site Specific Watershed Health Issues per Square Mile	Percent Increase in Impervious Cover	Active Dams per Square Mile
38	MUCKINIPATTIS CREEK	Highest Priority	6	6.92	7.8	9.0	9.0	10.0	10.0	10.0	7.0	9.0	10.0	1.0	1.0	1.0
39	DARBY CREEK	Highest Priority	1	7.88	7.3	9.0	10.0	7.0	10.0	6.0	7.0	9.0	10.0	1.0	1.0	1.0
40	STONY CREEK	Highest Priority	3	7.23	7.6	9.0	9.0	6.0	8.0	9.0	7.0	9.0	10.0	1.0	1.0	1.0
41	SPRING RUN	Lowest Priority	67	3.11	3.6	3.0	5.0	10.0	9.0	1.0	5.0	3.0	1.0	1.0	1.0	1.0
42	WALN RUN	Lowest Priority	65	3.26	4.0	2.0	4.0	4.0	4.0	7.0	5.0	3.0	10.0	1.0	1.0	1.0
43	RIDLEY CREEK	Priority	30	5.25	5.2	6.0	8.0	9.0	10.0	4.0	4.0	9.0	10.0	1.0	3.0	1.0
44	HERMESPROTA CREEK	High Priority	15	6.06	8.0	9.0	9.0	10.0	10.0	8.0	8.0	9.0	10.0	1.0	5.0	1.0
45	CHROME RUN	Low Priority	42	4.61	5.2	5.0	6.0	8.0	6.0	8.0	5.0	6.0	10.0	1.0	1.0	1.0
46	DICKS RUN	Low Priority	47	4.44	4.6	4.0	7.0	10.0	10.0	2.0	5.0	9.0	10.0	1.0	1.0	1.0
47	LITTLE CRUM CREEK	High Priority	16	6.01	5.8	5.0	8.0	10.0	10.0	9.0	5.0	9.0	10.0	1.0	1.0	1.0
48	DARBY CREEK	Priority	29	5.31	5.8	9.0	7.0	2.0	7.0	1.0	8.0	5.0	10.0	3.0	4.0	1.0
49	WEST BRANCH CHESTER CREEK	Priority	35	4.99	4.6	3.0	6.0	4.0	5.0	4.0	6.0	3.0	10.0	1.0	8.0	3.0
50	CHESTER CREEK	Priority	36	4.93	3.4	3.0	5.0	8.0	3.0	1.0	2.0	4.0	10.0	1.0	1.0	1.0
51	MUCKINIPATTIS CREEK	Highest Priority	7	6.73	6.4	9.0	10.0	9.0	10.0	2.0	7.0	9.0	10.0	1.0	1.0	1.0
52	CHESTER CREEK	Priority	33	5.03	5.2	4.0	7.0	9.0	5.0	5.0	6.0	5.0	10.0	1.0	3.0	7.0
53	HERMESPROTA CREEK	High Priority	23	5.58	6.2	9.0	8.0	3.0	4.0	1.0	7.0	8.0	10.0	1.0	1.0	1.0
54	CRUM RUN	Lowest Priority	61	3.56	3.9	3.0	6.0	5.0	8.0	1.0	5.0	6.0	10.0	1.0	1.0	1.0
55	LITTLE CRUM CREEK	Highest Priority	5	6.98	7.1	9.0	9.0	8.0	7.0	7.0	7.0	9.0	10.0	1.0	5.0	1.0
56	LITTLE CRUM CREEK	High Priority	14	6.14	6.1	6.0	8.0	7.0	8.0	5.0	6.0	9.0	10.0	1.0	2.0	6.0
57	WEST BRANCH CHESTER CREEK	Priority	32	5.22	4.9	4.0	7.0	7.0	4.0	3.0	4.0	4.0	10.0	1.0	5.0	10.0
58	LITTLE CRUM CREEK	Highest Priority	8	6.72	7.6	10.0	8.0	5.0	9.0	5.0	8.0	9.0	10.0	1.0	1.0	1.0
59	CHESTER CREEK	Highest Priority	4	7.14	6.6	9.0	9.0	9.0	7.0	4.0	6.0	8.0	10.0	1.0	2.0	1.0
60	GREEN CREEK	Lowest Priority	60	3.60	4.4	3.0	5.0	5.0	4.0	5.0	5.0	2.0	10.0	1.0	8.0	1.0
61	MARCUS HOOK CREEK	Highest Priority	10	6.53	6.8	8.0	7.0	5.0	5.0	9.0	6.0	8.0	10.0	1.0	4.0	1.0
62	BALDWIN RUN	Priority	38	4.86	5.8	8.0	7.0	9.0	4.0	2.0	6.0	7.0	10.0	1.0	9.0	1.0
63	EAST BRANCH NAAMAN CREEK	High Priority	21	5.71	5.4	5.0	7.0	9.0	8.0	8.0	6.0	5.0	10.0	1.0	1.0	1.0
64	SPRING RUN	Priority	39	4.83	5.0	3.0	7.0	10.0	9.0	8.0	5.0	4.0	10.0	1.0	5.0	1.0
65	STONEY CREEK	Priority	28	5.34	7.4	10.0	8.0	7.0	3.0	4.0	8.0	8.0	10.0	1.0	4.0	1.0
66	NAAMAN CREEK	High Priority	26	5.43	5.4	6.0	7.0	10.0	4.0	5.0	6.0	4.0	10.0	1.0	9.0	1.0
67	WEST BRANCH NAAMAN CREEK	Priority	41	4.63	5.7	4.0	7.0	8.0	2.0	10.0	5.0	4.0	10.0	1.0	8.0	1.0
68	DELAWARE RIVER	High Priority	19	5.77	5.0	8.0	1.0	1.0	10.0	4.0	10.0	7.0	10.0	1.0	3.0	1.0
69	DELAWARE RIVER	Highest Priority	13	6.26	7.0	9.0	7.0	2.0	10.0	8.0	10.0	9.0	10.0	1.0	2.0	1.0



Final Prioritization Report

Full Tabular Results

Direct-to-Delaware Tributaries



Water Quality Indicator Scores														
Analysis Unit	Overall Watershed Name	Prioritization Classification	Prioritization Rank (1 to 69)	Overall Prioritization Score	Water Quality Category Score	Estimated Sediment Loading per Square Mile	Estimated Nitrogen Loading per Square Mile	Estimated Phosphorous Loading per Square Mile	Percent of Stream Miles Impaired	Percent of Stream Miles with TMDL	Legacy dams per Square Mile	Sanitary Sewer Overflows per Square Mile	Site Specific Water Quality Issues per Square Mile	Water Degradation Sources per Square Mile
1	LITTLE DARBY CREEK	Priority	33	5.03	4.2	5.0	7.0	7.0	3.0	1.0	4.0	7.0	1.0	1.0
2	DARBY CREEK	Lowest Priority	63	3.42	3.8	2.0	7.0	7.0	1.0	1.0	6.0	5.0	1.0	3.0
3	HARDINGS RUN	Low Priority	45	4.51	5.5	6.0	9.0	9.0	1.0	1.0	7.0	7.0	1.0	1.0
4	ITHAN CREEK	Priority	31	5.23	4.3	2.0	8.0	8.0	1.0	1.0	7.0	7.0	1.0	5.0
5	CRUM CREEK	Lowest Priority	64	3.38	3.9	1.0	6.0	6.0	2.0	1.0	4.0	8.0	1.0	4.0
6	ITHAN CREEK	Low Priority	50	4.38	5.1	5.0	6.0	6.0	1.0	1.0	7.0	7.0	1.0	5.0
7	MEADOWBROOK RUN	Low Priority	50	4.38	4.8	7.0	7.0	7.0	1.0	1.0	5.0	6.0	1.0	1.0
8	RIDLEY CREEK	Lowest Priority	62	3.46	3.6	2.0	5.0	5.0	1.0	1.0	6.0	8.0	1.0	3.0
9	CRUM CREEK	Lowest Priority	66	3.17	3.1	1.0	4.0	4.0	1.0	1.0	6.0	5.0	1.0	3.0
10	RIDLEY CREEK	Low Priority	54	4.13	4.3	1.0	7.0	7.0	1.0	1.0	5.0	9.0	6.0	4.0
11	DARBY CREEK	Highest Priority	11	6.48	6.4	6.0	8.0	8.0	5.0	1.0	7.0	9.0	1.0	3.0
12	COBBS CREEK	High Priority	18	5.81	6.5	3.0	9.0	9.0	10.0	1.0	5.0	2.0	1.0	4.0
13	EAST BRANCH INDIAN CREEK	High Priority	22	5.63	6.7	5.0	9.0	9.0	10.0	1.0	5.0	10.0	1.0	5.0
14	CRUM CREEK	Lowest Priority	57	3.76	4.7	5.0	5.0	5.0	1.0	1.0	4.0	8.0	1.0	4.0
15	EAST BRANCH CHESTER CREEK	Lowest Priority	59	3.69	3.3	2.0	7.0	7.0	1.0	1.0	1.0	7.0	1.0	1.0
16	WEST BRANCH INDIAN CREEK	High Priority	24	5.53	5.9	1.0	9.0	9.0	10.0	1.0	6.0	2.0	1.0	6.0
17	FOXES RUN	Low Priority	44	4.56	5.1	5.0	8.0	8.0	1.0	1.0	1.0	9.0	1.0	7.0
18	EAST BRANCH CHESTER CREEK	Priority	37	4.89	4.1	2.0	8.0	8.0	1.0	1.0	3.0	9.0	1.0	6.0
19	RIDLEY CREEK	Lowest Priority	56	3.98	4.2	5.0	4.0	4.0	1.0	1.0	6.0	6.0	1.0	3.0
20	COBBS CREEK	Highest Priority	12	6.40	5.0	2.0	10.0	10.0	10.0	1.0	1.0	1.0	1.0	1.0
21	HUNTER RUN	Low Priority	45	4.51	5.4	6.0	8.0	8.0	1.0	1.0	1.0	9.0	1.0	7.0
22	COBBS CREEK	High Priority	17	5.98	6.6	2.0	10.0	10.0	10.0	1.0	1.0	7.0	1.0	8.0
23	LANGFORD RUN	High Priority	25	5.50	6.7	5.0	9.0	9.0	10.0	1.0	1.0	7.0	1.0	1.0
24	TROUT RUN	Priority	40	4.71	6.4	5.0	7.0	7.0	10.0	1.0	1.0	8.0	1.0	5.0
25	COBBS CREEK	Highest Priority	2	7.50	6.8	3.0	10.0	10.0	10.0	1.0	4.0	8.0	1.0	4.0
26	EAST BRANCH CHESTER CREEK	Low Priority	43	4.58	4.1	2.0	6.0	6.0	1.0	1.0	6.0	8.0	1.0	4.0
27	HUNTERS RUN	Lowest Priority	68	2.79	3.8	1.0	6.0	6.0	4.0	1.0	1.0	8.0	1.0	1.0
28	CRUM CREEK	Low Priority	52	4.34	4.3	7.0	5.0	5.0	1.0	1.0	1.0	8.0	1.0	3.0
29	CRUM CREEK	High Priority	27	5.36	6.6	7.0	8.0	8.0	6.0	1.0	5.0	7.0	1.0	7.0
30	EAST BRANCH CHESTER CREEK	Highest Priority	9	6.64	6.5	3.0	9.0	9.0	10.0	10.0	7.0	8.0	1.0	8.0
31	WHETSTONE RUN	High Priority	20	5.76	6.5	3.0	9.0	9.0	10.0	1.0	1.0	7.0	1.0	1.0
32	EAST BRANCH CHESTER CREEK	Low Priority	55	4.01	3.9	2.0	6.0	6.0	3.0	7.0	1.0	6.0	1.0	5.0
33	HOTLAND RUN	Low Priority	49	4.41	6.1	7.0	8.0	8.0	6.0	1.0	1.0	7.0	1.0	5.0
34	EAST BRANCH CHESTER CREEK	Low Priority	53	4.16	4.5	7.0	5.0	5.0	2.0	1.0	1.0	6.0	1.0	1.0
35	ROCKY RUN	Lowest Priority	58	3.73	3.8	7.0	6.0	6.0	1.0	1.0	1.0	1.0	1.0	4.0
36	EAST BRANCH CHESTER CREEK	Low Priority	48	4.42	5.1	10.0	4.0	4.0	3.0	1.0	5.0	6.0	1.0	4.0
37	DISMAL RUN	Lowest Priority	69	2.69	2.2	3.0	4.0	4.0	1.0	1.0	1.0	1.0	1.0	1.0



Final Prioritization Report

Full Tabular Results

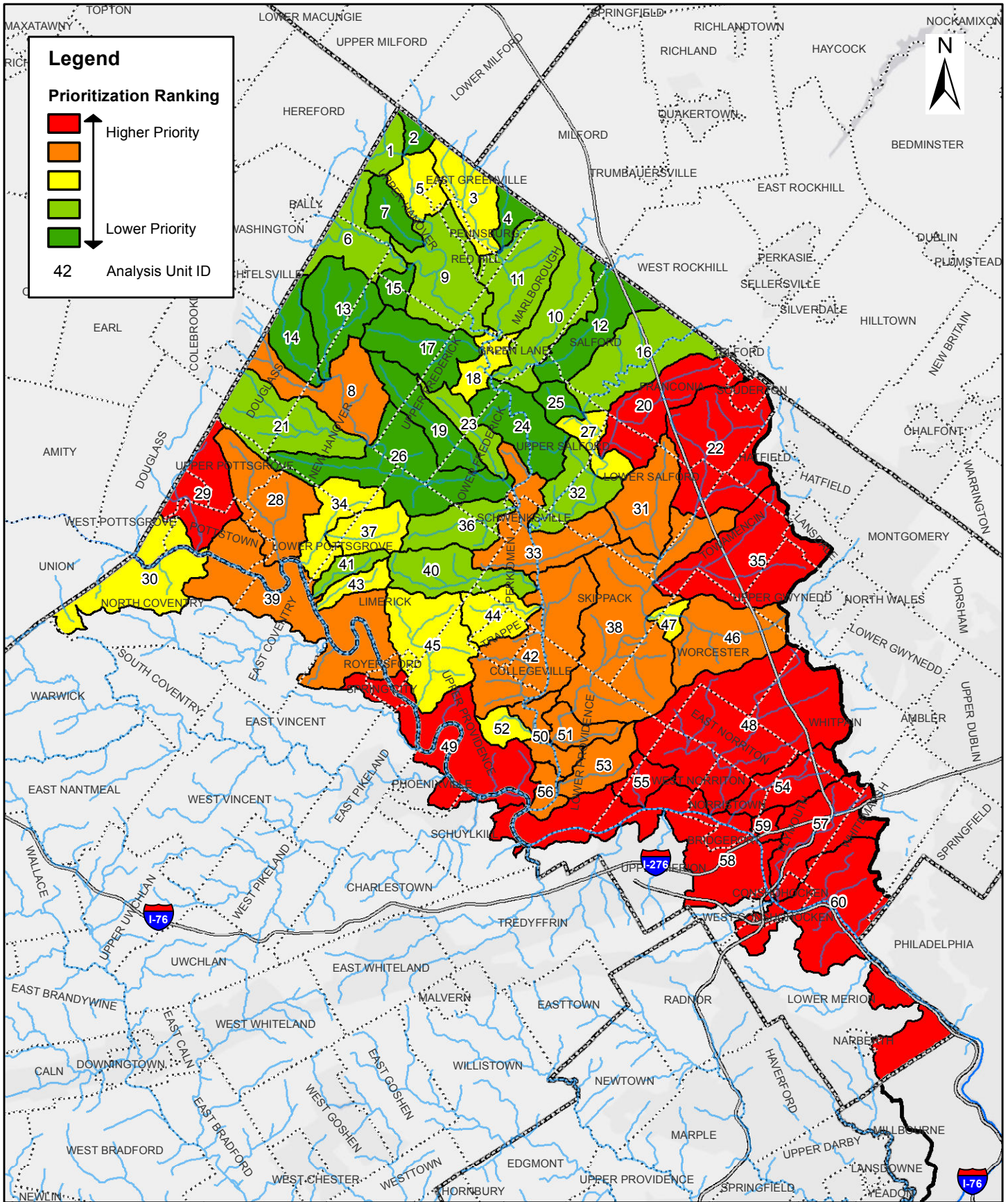
Direct-to-Delaware Tributaries



Water Quality Indicator Scores														
Analysis Unit	Overall Watershed Name	Prioritization Classification	Prioritization Rank (1 to 69)	Overall Prioritization Score	Water Quality Category Score	Estimated Sediment Loading per Square Mile	Estimated Nitrogen Loading per Square Mile	Estimated Phosphorous Loading per Square Mile	Percent of Stream Miles Impaired	Percent of Stream Miles with TMDL	Legacy dams per Square Mile	Sanitary Sewer Overflows per Square Mile	Site Specific Water Quality Issues per Square Mile	Water Degradation Sources per Square Mile
38	MUCKINIPATTIS CREEK	Highest Priority	6	6.92	6.8	1.0	10.0	10.0	10.0	1.0	4.0	9.0	1.0	6.0
39	DARBY CREEK	Highest Priority	1	7.88	7.4	5.0	10.0	10.0	10.0	1.0	5.0	9.0	1.0	5.0
40	STONY CREEK	Highest Priority	3	7.23	7.3	4.0	10.0	10.0	10.0	1.0	4.0	10.0	1.0	7.0
41	SPRING RUN	Lowest Priority	67	3.11	4.1	7.0	6.0	6.0	1.0	1.0	1.0	1.0	1.0	1.0
42	WALN RUN	Lowest Priority	65	3.26	3.6	6.0	4.0	4.0	1.0	10.0	1.0	7.0	1.0	5.0
43	RIDLEY CREEK	Priority	30	5.25	5.8	6.0	8.0	8.0	4.0	1.0	1.0	9.0	1.0	8.0
44	HERMESPROTA CREEK	High Priority	15	6.06	5.6	1.0	10.0	10.0	10.0	1.0	1.0	9.0	1.0	1.0
45	CHROME RUN	Low Priority	42	4.61	4.4	7.0	8.0	8.0	1.0	1.0	1.0	1.0	1.0	1.0
46	DICKS RUN	Low Priority	47	4.44	5.8	3.0	7.0	7.0	10.0	1.0	1.0	8.0	1.0	1.0
47	LITTLE CRUM CREEK	High Priority	16	6.01	5.6	4.0	8.0	8.0	10.0	1.0	1.0	8.0	1.0	1.0
48	DARBY CREEK	Priority	29	5.31	4.3	1.0	10.0	10.0	2.0	1.0	1.0	8.0	1.0	7.0
49	WEST BRANCH CHESTER CREEK	Priority	35	4.99	5.1	6.0	6.0	6.0	1.0	1.0	6.0	6.0	1.0	6.0
50	CHESTER CREEK	Priority	36	4.93	6.3	8.0	6.0	6.0	3.0	1.0	9.0	7.0	1.0	8.0
51	MUCKINIPATTIS CREEK	Highest Priority	7	6.73	7.9	2.0	10.0	10.0	10.0	1.0	8.0	10.0	1.0	6.0
52	CHESTER CREEK	Priority	33	5.03	5.9	8.0	7.0	7.0	1.0	1.0	6.0	9.0	1.0	7.0
53	HERMESPROTA CREEK	High Priority	23	5.58	6.2	2.0	10.0	10.0	10.0	1.0	1.0	9.0	1.0	8.0
54	CRUM RUN	Lowest Priority	61	3.56	3.5	3.0	6.0	6.0	1.0	1.0	1.0	1.0	1.0	1.0
55	LITTLE CRUM CREEK	Highest Priority	5	6.98	7.5	4.0	10.0	10.0	10.0	1.0	9.0	10.0	1.0	1.0
56	LITTLE CRUM CREEK	High Priority	14	6.14	6.4	5.0	9.0	9.0	4.0	1.0	8.0	9.0	1.0	5.0
57	WEST BRANCH CHESTER CREEK	Priority	32	5.22	6.0	8.0	7.0	7.0	1.0	1.0	10.0	9.0	1.0	6.0
58	LITTLE CRUM CREEK	Highest Priority	8	6.72	8.0	5.0	10.0	10.0	10.0	1.0	7.0	8.0	1.0	10.0
59	CHESTER CREEK	Highest Priority	4	7.14	5.7	7.0	9.0	9.0	1.0	1.0	3.0	9.0	1.0	6.0
60	GREEN CREEK	Lowest Priority	60	3.60	3.9	6.0	5.0	5.0	1.0	1.0	1.0	1.0	1.0	5.0
61	MARCUS HOOK CREEK	Highest Priority	10	6.53	7.0	5.0	9.0	9.0	10.0	1.0	2.0	8.0	1.0	8.0
62	BALDWIN RUN	Priority	38	4.86	4.9	4.0	9.0	9.0	1.0	1.0	1.0	10.0	1.0	8.0
63	EAST BRANCH NAAMAN CREEK	High Priority	21	5.71	7.0	6.0	8.0	8.0	10.0	1.0	1.0	7.0	1.0	7.0
64	SPRING RUN	Priority	39	4.83	6.0	6.0	6.0	6.0	10.0	1.0	1.0	6.0	1.0	1.0
65	STONEY CREEK	Priority	28	5.34	5.0	3.0	10.0	10.0	1.0	1.0	1.0	10.0	1.0	10.0
66	NAAMAN CREEK	High Priority	26	5.43	6.8	6.0	8.0	8.0	10.0	1.0	1.0	7.0	1.0	6.0
67	WEST BRANCH NAAMAN CREEK	Priority	41	4.63	7.0	6.0	7.0	7.0	10.0	1.0	5.0	6.0	1.0	4.0
68	DELAWARE RIVER	High Priority	19	5.77	5.4	1.0	9.0	9.0	9.0	6.0	1.0	6.0	1.0	8.0
69	DELAWARE RIVER	Highest Priority	13	6.26	5.8	1.0	10.0	10.0	9.0	8.0	1.0	8.0	1.0	9.0

Appendix C

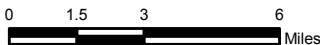
North Shore Schuylkill River



**Final Prioritization Report
 Prioritization Exhibit
 North Shore Schuylkill River**



AECOM



August 2012





Final Prioritization Report

Tabular Summary

North Shore Schuylkill River



Analysis Unit	Overall Watershed Name	Prioritization Classification	Prioritization Rank (1 to 60)	Overall Prioritization Score	Flooding Category Score	Watershed Health Category Score	Water Quality Category Score
1	PERKIOMEN CREEK	Low Priority	43	3.55	3.3	4.0	3.4
2	HOSENSACK CREEK	Lowest Priority	58	2.57	3.1	2.7	2.0
3	MACOBY CREEK	Priority	25	4.43	4.1	4.8	4.4
4	STONY RUN	Lowest Priority	53	2.99	3.6	2.7	2.7
5	PERKIOMEN CREEK	Priority	29	4.23	3.8	4.4	4.4
6	WEST BRANCH PERKIOMEN CREEK	Low Priority	48	3.29	3.4	3.0	3.4
7	MOLASSES CREEK	Lowest Priority	55	2.83	3.0	2.9	2.6
8	SWAMP CREEK	High Priority	24	4.47	4.4	4.0	4.8
9	PERKIOMEN CREEK	Low Priority	47	3.47	4.1	3.1	3.3
10	UNAMI CREEK	Low Priority	42	3.63	5.0	1.8	4.0
11	MACOBY CREEK	Low Priority	46	3.49	4.6	2.7	3.2
12	RIDGE VALLEY CREEK	Lowest Priority	56	2.78	3.4	1.6	3.1
13	SCHLEGEL RUN	Lowest Priority	52	3.05	4.0	3.2	2.2
14	MIDDLE CREEK	Lowest Priority	57	2.59	2.8	2.7	2.4
15	WEST BRANCH PERKIOMEN CREEK	Lowest Priority	59	2.53	2.9	2.1	2.6
16	EAST BRANCH PERKIOMEN CREEK	Low Priority	37	3.89	3.6	3.8	4.1
17	DEEP CREEK	Lowest Priority	60	2.51	3.4	2.0	2.2
18	PERKIOMEN CREEK	Priority	26	4.40	5.4	2.8	4.8
19	SCIOTO CREEK	Lowest Priority	54	2.86	3.2	2.4	2.9
20	INDIAN CREEK	Highest Priority	6	5.95	4.0	5.8	7.5
21	MINISTER CREEK	Low Priority	40	3.77	4.1	4.4	3.1
22	SKIPPACK CREEK	Highest Priority	8	5.92	3.8	6.2	7.2
23	GOSHENHOPPEN CREEK	Low Priority	43	3.55	3.7	3.0	3.8
24	PERKIOMEN CREEK	Lowest Priority	51	3.06	3.9	2.8	2.6
25	VAUGHN RUN	Lowest Priority	50	3.20	3.4	3.3	2.9
26	SWAMP CREEK	Lowest Priority	49	3.28	4.0	3.0	3.0
27	EAST BRANCH PERKIOMEN CREEK	Priority	28	4.25	4.8	3.9	4.1
28	SPROGLES RUN	High Priority	21	4.53	4.6	5.2	4.0
29	MANATAWNY CREEK	Highest Priority	4	6.31	7.0	5.4	6.4
30	SCHUYLKILL RIVER	Priority	32	4.05	4.3	3.6	4.2
31	WEST BRANCH SKIPPACK CREEK	High Priority	22	4.50	3.4	5.7	4.4
32	EAST BRANCH PERKIOMEN CREEK	Low Priority	38	3.88	5.4	3.4	3.0
33	PERKIOMEN CREEK	High Priority	13	5.12	5.3	4.4	5.5
34	SANATOGA CREEK	Priority	30	4.15	4.2	3.5	4.6
35	TOWAMENCIN CREEK	Highest Priority	10	5.52	3.9	5.9	6.5
36	MINE RUN	Low Priority	45	3.52	3.6	3.0	3.8
37	HARTENSTINE CREEK	Priority	31	4.14	3.5	4.6	4.2
38	SKIPPACK CREEK	High Priority	18	4.86	4.6	4.3	5.4
39	SCHUYLKILL RIVER	High Priority	20	4.85	5.0	4.6	5.0
40	LODAL CREEK	Low Priority	38	3.88	3.2	4.7	3.8
41	POSSUM HOLLOW RUN	Low Priority	40	3.77	1.6	5.5	4.1
42	PERKIOMEN CREEK	High Priority	16	4.91	6.1	4.4	4.4
43	BROOKE EVANS CREEK	Priority	34	4.03	2.9	5.6	3.7
44	SCHOOLHOUSE RUN	Priority	36	3.94	3.2	5.9	3.0
45	MINGO CREEK	Priority	32	4.05	3.6	5.1	3.6
46	ZACHARIAS CREEK	High Priority	23	4.48	3.1	4.6	5.4
47	ZACHARIAS CREEK	Priority	26	4.40	3.8	3.9	5.2
48	STONY CREEK	Highest Priority	9	5.86	5.0	6.0	6.4
49	SCHUYLKILL RIVER	Highest Priority	12	5.36	6.4	5.0	4.8



Final Prioritization Report
Tabular Summary
North Shore Schuylkill River



Analysis Unit	Overall Watershed Name	Prioritization Classification	Prioritization Rank (1 to 60)	Overall Prioritization Score	Flooding Category Score	Watershed Health Category Score	Water Quality Category Score
50	PERKIOMEN CREEK	High Priority	18	4.86	5.6	4.6	4.4
51	SKIPPACK CREEK	High Priority	17	4.88	4.4	4.7	5.4
52	DOE RUN	Priority	35	3.99	2.5	5.5	4.0
53	MINE RUN	High Priority	14	4.96	4.9	6.1	4.1
54	SAWMILL RUN	Highest Priority	3	6.62	6.4	7.5	6.2
55	INDIAN CREEK	Highest Priority	1	6.95	6.6	7.2	7.0
56	PERKIOMEN CREEK	High Priority	15	4.92	5.4	5.6	4.0
57	PLYMOUTH CREEK	Highest Priority	2	6.83	4.6	7.6	7.8
58	SCHUYLKILL RIVER	Highest Priority	4	6.31	6.6	6.2	6.1
59	DIAMOND RUN	Highest Priority	7	5.93	2.4	7.5	7.4
60	SCHUYLKILL RIVER	Highest Priority	11	5.46	5.2	4.6	6.2



Final Prioritization Report

Full Tabular Results

North Shore Schuylkill River



Flooding Indicator Scores

Analysis Unit	Overall Watershed Name	Prioritization Classification	Prioritization Rank (1 to 60)	Overall Prioritization Score	Flooding Category Score	NFIP Claims per Square Mile	FEMA Risk Decile	Average Annualized Flood Loss per Square Mile	Percent Population in Floodplain	Percent Highly Erodible Land	Repetitive Loss Properties per Square Mile	Site Specific Flood Issues per Square Mile
1	PERKIOMEN CREEK	Low Priority	43	3.55	3.3	1.0	1.0	5.0	4.0	9.0	1.0	1.0
2	HOSENSACK CREEK	Lowest Priority	58	2.57	3.1	1.0	1.0	4.0	4.0	9.0	1.0	1.0
3	MACOBY CREEK	Priority	25	4.43	4.1	4.0	6.0	6.0	3.0	7.0	1.0	1.0
4	STONY RUN	Lowest Priority	53	2.99	3.6	1.0	1.0	5.0	6.0	10.0	1.0	1.0
5	PERKIOMEN CREEK	Priority	29	4.23	3.8	1.0	6.0	5.0	2.0	9.0	1.0	1.0
6	WEST BRANCH PERKIOMEN CREEK	Low Priority	48	3.29	3.4	1.0	4.0	4.0	3.0	9.0	1.0	1.0
7	MOLASSES CREEK	Lowest Priority	55	2.83	3.0	1.0	2.0	4.0	2.0	9.0	1.0	1.0
8	SWAMP CREEK	High Priority	24	4.47	4.4	4.0	6.0	5.0	6.0	3.0	4.0	1.0
9	PERKIOMEN CREEK	Low Priority	47	3.47	4.1	3.0	7.0	3.0	1.0	10.0	2.0	1.0
10	UNAMI CREEK	Low Priority	42	3.63	5.0	5.0	6.0	4.0	3.0	10.0	4.0	1.0
11	MACOBY CREEK	Low Priority	46	3.49	4.6	4.0	6.0	5.0	2.0	10.0	2.0	1.0
12	RIDGE VALLEY	Lowest Priority	56	2.78	3.4	1.0	5.0	3.0	2.0	10.0	1.0	1.0
13	SCHLEGEL RUN	Lowest Priority	52	3.05	4.0	1.0	5.0	6.0	3.0	9.0	1.0	1.0
14	MIDDLE CREEK	Lowest Priority	57	2.59	2.8	1.0	4.0	4.0	5.0	3.0	1.0	1.0
15	WEST BRANCH PERKIOMEN CREEK	Lowest Priority	59	2.53	2.9	1.0	2.0	3.0	1.0	10.0	1.0	1.0
16	EAST BRANCH PERKIOMEN CREEK	Low Priority	37	3.89	3.6	1.0	6.0	4.0	2.0	9.0	1.0	1.0
17	DEEP CREEK	Lowest Priority	60	2.51	3.4	2.0	5.0	2.0	2.0	10.0	1.0	1.0
18	PERKIOMEN CREEK	Priority	26	4.40	5.4	6.0	5.0	5.0	3.0	10.0	5.0	1.0
19	SCIOTO CREEK	Lowest Priority	54	2.86	3.2	1.0	4.0	4.0	2.0	8.0	1.0	1.0
20	INDIAN CREEK	Highest Priority	6	5.95	4.0	3.0	7.0	5.0	1.0	7.0	2.0	1.0
21	MINISTER CREEK	Low Priority	40	3.77	4.1	4.0	7.0	6.0	2.0	3.0	3.0	1.0
22	SKIPPACK CREEK	Highest Priority	8	5.92	3.8	3.0	8.0	5.0	1.0	6.0	1.0	1.0
23	GOSHENHOPPEN CREEK	Low Priority	43	3.55	3.7	3.0	3.0	5.0	3.0	9.0	1.0	1.0
24	PERKIOMEN CREEK	Lowest Priority	51	3.06	3.9	3.0	4.0	5.0	2.0	10.0	1.0	1.0
25	VAUGHN RUN	Lowest Priority	50	3.20	3.4	1.0	4.0	5.0	1.0	9.0	1.0	1.0
26	SWAMP CREEK	Lowest Priority	49	3.28	4.0	3.0	6.0	4.0	2.0	8.0	2.0	1.0
27	EAST BRANCH PERKIOMEN CREEK	Priority	28	4.25	4.8	5.0	5.0	6.0	2.0	7.0	4.0	1.0
28	SPROGLES RUN	High Priority	21	4.53	4.6	4.0	8.0	6.0	1.0	6.0	3.0	1.0
29	MANATAWNY CREEK	Highest Priority	4	6.31	7.0	8.0	8.0	6.0	4.0	10.0	7.0	4.0
30	SCHUYLKILL RIVER	Priority	32	4.05	4.3	7.0	7.0	1.0	2.0	9.0	3.0	1.0



Final Prioritization Report

Full Tabular Results

North Shore Schuylkill River



					Flooding Indicator Scores							
Analysis Unit	Overall Watershed Name	Prioritization Classification	Prioritization Rank (1 to 60)	Overall Prioritization Score	Flooding Category Score	NFIP Claims per Square Mile	FEMA Risk Decile	Average Annualized Flood Loss per Square Mile	Percent Population in Floodplain	Percent Highly Erodible Land	Repetitive Loss Properties per Square Mile	Site Specific Flood Issues per Square Mile
31	WEST BRANCH SKIPPACK CREEK	High Priority	22	4.50	3.4	4.0	6.0	1.0	2.0	8.0	2.0	1.0
32	EAST BRANCH PERKIOMEN CREEK	Low Priority	38	3.88	5.4	6.0	4.0	6.0	4.0	9.0	5.0	1.0
33	PERKIOMEN CREEK	High Priority	13	5.12	5.3	7.0	6.0	6.0	1.0	5.0	6.0	3.0
34	SANATOGA CREEK	Priority	30	4.15	4.2	4.0	6.0	6.0	2.0	8.0	1.0	1.0
35	TOWAMENCIN CREEK	Highest Priority	10	5.52	3.9	4.0	8.0	6.0	2.0	4.0	1.0	1.0
36	MINE RUN	Low Priority	45	3.52	3.6	3.0	3.0	4.0	3.0	10.0	1.0	1.0
37	HARTENSTINE CREEK	Priority	31	4.14	3.5	1.0	4.0	4.0	2.0	10.0	1.0	1.0
38	SKIPPACK CREEK	High Priority	18	4.86	4.6	5.0	7.0	5.0	1.0	8.0	3.0	1.0
39	SCHUYLKILL RIVER	High Priority	20	4.85	5.0	7.0	8.0	6.0	2.0	4.0	4.0	1.0
40	LODAL CREEK	Low Priority	38	3.88	3.2	2.0	5.0	5.0	3.0	4.0	1.0	1.0
41	POSSUM HOLLOW RUN	Low Priority	40	3.77	1.6	1.0	3.0	1.0	1.0	3.0	1.0	1.0
42	PERKIOMEN CREEK	High Priority	16	4.91	6.1	7.0	7.0	8.0	3.0	4.0	7.0	2.0
43	BROOKE EVANS CREEK	Priority	34	4.03	2.9	3.0	3.0	2.0	1.0	9.0	1.0	1.0
44	SCHOOLHOUSE RUN	Priority	36	3.94	3.2	3.0	5.0	5.0	2.0	4.0	1.0	1.0
45	MINGO CREEK	Priority	32	4.05	3.6	3.0	7.0	6.0	2.0	4.0	1.0	1.0
46	ZACHARIAS CREEK	High Priority	23	4.48	3.1	3.0	6.0	4.0	2.0	4.0	1.0	1.0
47	ZACHARIAS CREEK	Priority	26	4.40	3.8	4.0	2.0	6.0	2.0	9.0	1.0	1.0
48	STONY CREEK	Highest Priority	9	5.86	5.0	6.0	9.0	6.0	2.0	4.0	4.0	1.0
49	SCHUYLKILL RIVER	Highest Priority	12	5.36	6.4	8.0	8.0	9.0	2.0	4.0	7.0	2.0
50	PERKIOMEN CREEK	High Priority	18	4.86	5.6	6.0	5.0	9.0	5.0	3.0	6.0	1.0
51	SKIPPACK CREEK	High Priority	17	4.88	4.4	6.0	5.0	5.0	1.0	4.0	5.0	1.0
52	DOE RUN	Priority	35	3.99	2.5	1.0	2.0	4.0	1.0	6.0	1.0	1.0
53	MINE RUN	High Priority	14	4.96	4.9	5.0	6.0	7.0	1.0	8.0	3.0	1.0
54	SAWMILL RUN	Highest Priority	3	6.62	6.4	6.0	8.0	8.0	2.0	10.0	5.0	1.0
55	INDIAN CREEK	Highest Priority	1	6.95	6.6	8.0	5.0	5.0	2.0	10.0	9.0	1.0
56	PERKIOMEN CREEK	High Priority	15	4.92	5.4	7.0	3.0	8.0	2.0	4.0	7.0	1.0
57	PLYMOUTH CREEK	Highest Priority	2	6.83	4.6	6.0	8.0	5.0	1.0	3.0	5.0	1.0
58	SCHUYLKILL RIVER	Highest Priority	4	6.31	6.6	9.0	9.0	7.0	4.0	3.0	8.0	2.0
59	DIAMOND RUN	Highest Priority	7	5.93	2.4	6.0	5.0	1.0	1.0	3.0	1.0	1.0
60	SCHUYLKILL RIVER	Highest Priority	11	5.46	5.2	7.0	9.0	7.0	2.0	2.0	5.0	1.0



Final Prioritization Report

Full Tabular Results

North Shore Schuylkill River



Watershed Health Indicator Scores																
Analysis Unit	Overall Watershed Name	Prioritization Classification	Prioritization Rank (1 to 60)	Overall Prioritization Score	Watershed Health Category Score	Percent Impervious	Population Density	Percent Wetlands	Percent Hydric Soils	Riparian Buffer Quality	Percent Tree Cover	Critical Habitat Quality	Percentage of stream miles that are HQ or EV	Site Specific Watershed Health Issues per Square Mile	Percent Increase in Impervious Cover	Active Dams per Square Mile
1	PERKIOMEN CREEK	Low Priority	43	3.55	4.0	2.0	3.0	8.0	4.0	7.0	6.0	4.0	10.0	1.0	1.0	1.0
2	HOSENSACK CREEK	Lowest Priority	58	2.57	2.7	1.0	1.0	10.0	2.0	5.0	2.0	3.0	10.0	1.0	1.0	1.0
3	MACOBY CREEK	Priority	25	4.43	4.8	3.0	6.0	4.0	8.0	7.0	6.0	2.0	10.0	1.0	7.0	1.0
4	STONY RUN	Lowest Priority	53	2.99	2.7	2.0	3.0	4.0	2.0	1.0	4.0	1.0	10.0	1.0	6.0	1.0
5	PERKIOMEN CREEK	Priority	29	4.23	4.4	4.0	6.0	3.0	8.0	4.0	6.0	3.0	10.0	1.0	1.0	1.0
6	WEST BRANCH PERKIOMEN CREEK	Low Priority	48	3.29	3.0	1.0	2.0	5.0	2.0	6.0	5.0	2.0	10.0	1.0	1.0	1.0
7	MOLASSES CREEK	Lowest Priority	55	2.83	2.9	2.0	2.0	4.0	3.0	3.0	6.0	1.0	10.0	1.0	1.0	1.0
8	SWAMP CREEK	High Priority	24	4.47	4.0	3.0	4.0	3.0	2.0	7.0	6.0	3.0	10.0	1.0	2.0	1.0
9	PERKIOMEN CREEK	Low Priority	47	3.47	3.1	2.0	5.0	2.0	5.0	2.0	6.0	1.0	10.0	1.0	2.0	1.0
10	UNAMI CREEK	Low Priority	42	3.63	1.8	2.0	2.0	4.0	2.0	2.0	1.0	1.0	1.0	1.0	1.0	1.0
11	MACOBY CREEK	Low Priority	46	3.49	2.7	2.0	3.0	4.0	1.0	4.0	3.0	1.0	10.0	1.0	1.0	1.0
12	RIDGE VALLEY	Lowest Priority	56	2.78	1.6	2.0	2.0	3.0	1.0	1.0	2.0	1.0	1.0	1.0	1.0	1.0
13	SCHLEGEL RUN	Lowest Priority	52	3.05	3.2	1.0	2.0	7.0	2.0	7.0	5.0	1.0	10.0	1.0	1.0	1.0
14	MIDDLE CREEK	Lowest Priority	57	2.59	2.7	2.0	1.0	3.0	2.0	2.0	7.0	2.0	10.0	1.0	1.0	1.0
15	WEST BRANCH PERKIOMEN CREEK	Lowest Priority	59	2.53	2.1	1.0	2.0	6.0	2.0	2.0	2.0	1.0	10.0	1.0	1.0	1.0
16	EAST BRANCH PERKIOMEN CREEK	Low Priority	37	3.89	3.8	3.0	4.0	3.0	3.0	4.0	6.0	1.0	10.0	1.0	4.0	5.0
17	DEEP CREEK	Lowest Priority	60	2.51	2.0	1.0	3.0	4.0	2.0	2.0	1.0	1.0	10.0	1.0	1.0	1.0
18	PERKIOMEN CREEK	Priority	26	4.40	2.8	2.0	4.0	3.0	3.0	2.0	2.0	1.0	10.0	1.0	1.0	8.0
19	SCIOTO CREEK	Lowest Priority	54	2.86	2.4	1.0	3.0	6.0	2.0	1.0	6.0	1.0	10.0	1.0	1.0	1.0
20	INDIAN CREEK	Highest Priority	6	5.95	5.8	5.0	6.0	7.0	10.0	7.0	8.0	3.0	10.0	1.0	6.0	1.0
21	MINISTER CREEK	Low Priority	40	3.77	4.4	3.0	6.0	4.0	5.0	5.0	6.0	4.0	10.0	1.0	5.0	1.0
22	SKIPPACK CREEK	Highest Priority	8	5.92	6.2	6.0	6.0	8.0	9.0	7.0	8.0	4.0	10.0	1.0	7.0	1.0
23	GOSHENHOPPEN CREEK	Low Priority	43	3.55	3.0	2.0	4.0	8.0	2.0	1.0	6.0	1.0	10.0	1.0	2.0	1.0
24	PERKIOMEN CREEK	Lowest Priority	51	3.06	2.8	2.0	4.0	4.0	2.0	2.0	3.0	1.0	10.0	1.0	1.0	6.0
25	VAUGHN RUN	Lowest Priority	50	3.20	3.3	2.0	4.0	10.0	2.0	3.0	6.0	1.0	10.0	1.0	1.0	1.0
26	SWAMP CREEK	Lowest Priority	49	3.28	3.0	2.0	4.0	4.0	3.0	2.0	3.0	1.0	10.0	1.0	5.0	4.0
27	EAST BRANCH PERKIOMEN CREEK	Priority	28	4.25	3.9	3.0	5.0	3.0	7.0	3.0	6.0	2.0	10.0	1.0	6.0	1.0
28	SPROGLES RUN	High Priority	21	4.53	5.2	4.0	7.0	8.0	3.0	9.0	4.0	4.0	10.0	1.0	4.0	1.0
29	MANATAWNY CREEK	Highest Priority	4	6.31	5.4	6.0	7.0	4.0	5.0	5.0	6.0	4.0	10.0	1.0	6.0	1.0
30	SCHUYLKILL RIVER	Priority	32	4.05	3.6	4.0	5.0	3.0	7.0	2.0	3.0	4.0	7.0	1.0	3.0	1.0



Final Prioritization Report Full Tabular Results North Shore Schuylkill River



					Watershed Health Indicator Scores											
Analysis Unit	Overall Watershed Name	Prioritization Classification	Prioritization Rank (1 to 60)	Overall Prioritization Score	Watershed Health Category Score	Percent Impervious	Population Density	Percent Wetlands	Percent Hydric Soils	Riparian Buffer Quality	Percent Tree Cover	Critical Habitat Quality	Percentage of stream miles that are HQ or EV	Site Specific Watershed Health Issues per Square Mile	Percent Increase in Impervious Cover	Active Dams per Square Mile
31	WEST BRANCH SKIPPACK CREEK	High Priority	22	4.50	5.7	4.0	6.0	10.0	10.0	7.0	8.0	3.0	10.0	1.0	6.0	1.0
32	EAST BRANCH PERKIOMEN CREEK	Low Priority	38	3.88	3.4	2.0	3.0	4.0	6.0	2.0	6.0	1.0	10.0	1.0	3.0	7.0
33	PERKIOMEN CREEK	High Priority	13	5.12	4.4	3.0	6.0	3.0	8.0	3.0	6.0	1.0	10.0	1.0	8.0	5.0
34	SANATOGA CREEK	Priority	30	4.15	3.5	3.0	5.0	7.0	3.0	3.0	3.0	3.0	10.0	1.0	3.0	1.0
35	TOWAMENCIN CREEK	Highest Priority	10	5.52	5.9	5.0	7.0	7.0	10.0	7.0	6.0	7.0	10.0	1.0	4.0	1.0
36	MINE RUN	Low Priority	45	3.52	3.0	2.0	4.0	8.0	3.0	2.0	5.0	1.0	10.0	1.0	1.0	1.0
37	HARTENSTINE CREEK	Priority	31	4.14	4.6	3.0	5.0	8.0	2.0	7.0	5.0	4.0	10.0	1.0	8.0	1.0
38	SKIPPACK CREEK	High Priority	18	4.86	4.3	3.0	5.0	3.0	10.0	4.0	6.0	4.0	10.0	1.0	5.0	1.0
39	SCHUYLKILL RIVER	High Priority	20	4.85	4.6	5.0	6.0	3.0	10.0	2.0	6.0	5.0	6.0	1.0	4.0	2.0
40	LODAL CREEK	Low Priority	38	3.88	4.7	4.0	6.0	5.0	8.0	4.0	6.0	4.0	10.0	1.0	6.0	1.0
41	POSSUM HOLLOW RUN	Low Priority	40	3.77	5.5	5.0	2.0	5.0	10.0	8.0	6.0	6.0	10.0	1.0	7.0	1.0
42	PERKIOMEN CREEK	High Priority	16	4.91	4.4	4.0	6.0	3.0	9.0	2.0	6.0	4.0	10.0	1.0	7.0	1.0
43	BROOKE EVANS CREEK	Priority	34	4.03	5.6	4.0	5.0	8.0	10.0	9.0	6.0	4.0	10.0	1.0	5.0	1.0
44	SCHOOLHOUSE RUN	Priority	36	3.94	5.9	4.0	6.0	10.0	10.0	9.0	7.0	5.0	10.0	1.0	5.0	1.0
45	MINGO CREEK	Priority	32	4.05	5.1	4.0	6.0	8.0	9.0	4.0	7.0	4.0	10.0	1.0	7.0	1.0
46	ZACHARIAS CREEK	High Priority	23	4.48	4.6	3.0	5.0	7.0	9.0	5.0	6.0	4.0	10.0	1.0	5.0	1.0
47	ZACHARIAS CREEK	Priority	26	4.40	3.9	2.0	3.0	4.0	10.0	3.0	6.0	3.0	10.0	1.0	1.0	10.0
48	STONY CREEK	Highest Priority	9	5.86	6.0	6.0	7.0	5.0	8.0	7.0	6.0	7.0	10.0	1.0	4.0	1.0
49	SCHUYLKILL RIVER	Highest Priority	12	5.36	5.0	5.0	7.0	3.0	10.0	2.0	6.0	5.0	10.0	1.0	6.0	4.0
50	PERKIOMEN CREEK	High Priority	18	4.86	4.6	4.0	6.0	3.0	10.0	1.0	5.0	4.0	10.0	1.0	8.0	8.0
51	SKIPPACK CREEK	High Priority	17	4.88	4.7	4.0	7.0	4.0	10.0	2.0	3.0	4.0	10.0	6.0	9.0	1.0
52	DOE RUN	Priority	35	3.99	5.5	5.0	1.0	7.0	9.0	8.0	6.0	5.0	10.0	1.0	8.0	1.0
53	MINE RUN	High Priority	14	4.96	6.1	5.0	7.0	7.0	10.0	8.0	6.0	7.0	10.0	1.0	7.0	1.0
54	SAWMILL RUN	Highest Priority	3	6.62	7.5	8.0	8.0	9.0	8.0	10.0	7.0	8.0	10.0	1.0	4.0	1.0
55	INDIAN CREEK	Highest Priority	1	6.95	7.2	7.0	7.0	10.0	10.0	10.0	7.0	7.0	10.0	1.0	6.0	1.0
56	PERKIOMEN CREEK	High Priority	15	4.92	5.6	7.0	4.0	3.0	9.0	2.0	6.0	5.0	10.0	1.0	7.0	10.0
57	PLYMOUTH CREEK	Highest Priority	2	6.83	7.6	9.0	7.0	7.0	9.0	10.0	7.0	8.0	10.0	1.0	5.0	1.0
58	SCHUYLKILL RIVER	Highest Priority	4	6.31	6.2	8.0	7.0	3.0	9.0	4.0	6.0	7.0	10.0	1.0	4.0	5.0
59	DIAMOND RUN	Highest Priority	7	5.93	7.5	9.0	7.0	4.0	10.0	9.0	6.0	8.0	10.0	1.0	9.0	1.0
60	SCHUYLKILL RIVER	Highest Priority	11	5.46	4.6	5.0	7.0	3.0	7.0	2.0	5.0	7.0	10.0	1.0	2.0	2.0



Final Prioritization Report Full Tabular Results North Shore Schuylkill River



					Water Quality Indicator Scores									
Analysis Unit	Overall Watershed Name	Prioritization Classification	Prioritization Rank (1 to 60)	Overall Prioritization Score	Water Quality Category Score	Estimated Sediment Loading per Square Mile	Estimated Nitrogen Loading per Square Mile	Estimated Phosphorous Loading per Square Mile	Percent of Stream Miles Impaired	Percent of Stream Miles with TMDL	Legacy dams per Square Mile	Sanitary Sewer Overflows per Square Mile	Site Specific Water Quality Issues per Square Mile	Water Degradation Sources per Square Mile
1	PERKIOMEN CREEK	Low Priority	43	3.55	3.4	3.0	5.0	5.0	1.0	1.0	9.0	5.0	1.0	4.0
2	HOSENSACK CREEK	Lowest Priority	58	2.57	2.0	1.0	2.0	2.0	1.0	1.0	8.0	5.0	1.0	1.0
3	MACOBY CREEK	Priority	25	4.43	4.4	5.0	7.0	7.0	1.0	1.0	7.0	5.0	1.0	7.0
4	STONY RUN	Lowest Priority	53	2.99	2.7	5.0	4.0	4.0	1.0	1.0	1.0	5.0	1.0	1.0
5	PERKIOMEN CREEK	Priority	29	4.23	4.4	4.0	7.0	7.0	1.0	1.0	8.0	5.0	1.0	9.0
6	WEST BRANCH PERKIOMEN CREEK	Low Priority	48	3.29	3.4	6.0	3.0	3.0	1.0	1.0	6.0	5.0	1.0	4.0
7	MOLASSES CREEK	Lowest Priority	55	2.83	2.6	3.0	4.0	4.0	1.0	1.0	5.0	5.0	1.0	1.0
8	SWAMP CREEK	High Priority	24	4.47	4.8	2.0	6.0	6.0	7.0	1.0	7.0	6.0	1.0	4.0
9	PERKIOMEN CREEK	Low Priority	47	3.47	3.3	3.0	5.0	5.0	1.0	1.0	6.0	5.0	1.0	5.0
10	UNAMI CREEK	Low Priority	42	3.63	4.0	7.0	4.0	4.0	1.0	1.0	9.0	6.0	1.0	3.0
11	MACOBY CREEK	Low Priority	46	3.49	3.2	5.0	4.0	4.0	1.0	1.0	2.0	6.0	1.0	5.0
12	RIDGE VALLEY	Lowest Priority	56	2.78	3.1	5.0	4.0	4.0	1.0	1.0	7.0	1.0	1.0	4.0
13	SCHLEGEL RUN	Lowest Priority	52	3.05	2.2	3.0	2.0	2.0	1.0	1.0	4.0	5.0	1.0	2.0
14	MIDDLE CREEK	Lowest Priority	57	2.59	2.4	1.0	4.0	4.0	1.0	1.0	4.0	3.0	1.0	5.0
15	WEST BRANCH PERKIOMEN CREEK	Lowest Priority	59	2.53	2.6	4.0	2.0	2.0	1.0	1.0	1.0	6.0	1.0	5.0
16	EAST BRANCH PERKIOMEN CREEK	Low Priority	37	3.89	4.1	6.0	6.0	6.0	1.0	1.0	6.0	8.0	1.0	3.0
17	DEEP CREEK	Lowest Priority	60	2.51	2.2	5.0	1.0	1.0	1.0	1.0	2.0	6.0	1.0	1.0
18	PERKIOMEN CREEK	Priority	26	4.40	4.8	7.0	5.0	5.0	1.0	1.0	10.0	9.0	1.0	6.0
19	SCIOTO CREEK	Lowest Priority	54	2.86	2.9	5.0	3.0	3.0	1.0	1.0	1.0	5.0	1.0	5.0
20	INDIAN CREEK	Highest Priority	6	5.95	7.5	6.0	7.0	7.0	10.0	10.0	7.0	9.0	1.0	6.0
21	MINISTER CREEK	Low Priority	40	3.77	3.1	2.0	6.0	6.0	1.0	1.0	1.0	6.0	1.0	6.0
22	SKIPPACK CREEK	Highest Priority	8	5.92	7.2	5.0	8.0	8.0	10.0	10.0	3.0	9.0	1.0	7.0
23	GOSHENHOPPEN CREEK	Low Priority	43	3.55	3.8	5.0	4.0	4.0	6.0	1.0	1.0	1.0	1.0	3.0
24	PERKIOMEN CREEK	Lowest Priority	51	3.06	2.6	5.0	4.0	4.0	1.0	1.0	2.0	1.0	1.0	2.0
25	VAUGHN RUN	Lowest Priority	50	3.20	2.9	5.0	4.0	4.0	1.0	1.0	1.0	1.0	1.0	6.0
26	SWAMP CREEK	Lowest Priority	49	3.28	3.0	5.0	3.0	3.0	1.0	1.0	5.0	6.0	1.0	2.0
27	EAST BRANCH PERKIOMEN CREEK	Priority	28	4.25	4.1	7.0	6.0	6.0	1.0	1.0	5.0	5.0	1.0	4.0
28	SPROGLES RUN	High Priority	21	4.53	4.0	5.0	7.0	7.0	1.0	1.0	2.0	9.0	1.0	4.0
29	MANATAWNY CREEK	Highest Priority	4	6.31	6.4	7.0	8.0	8.0	6.0	1.0	6.0	9.0	1.0	7.0
30	SCHUYLKILL RIVER	Priority	32	4.05	4.2	5.0	7.0	7.0	1.0	1.0	3.0	7.0	1.0	7.0



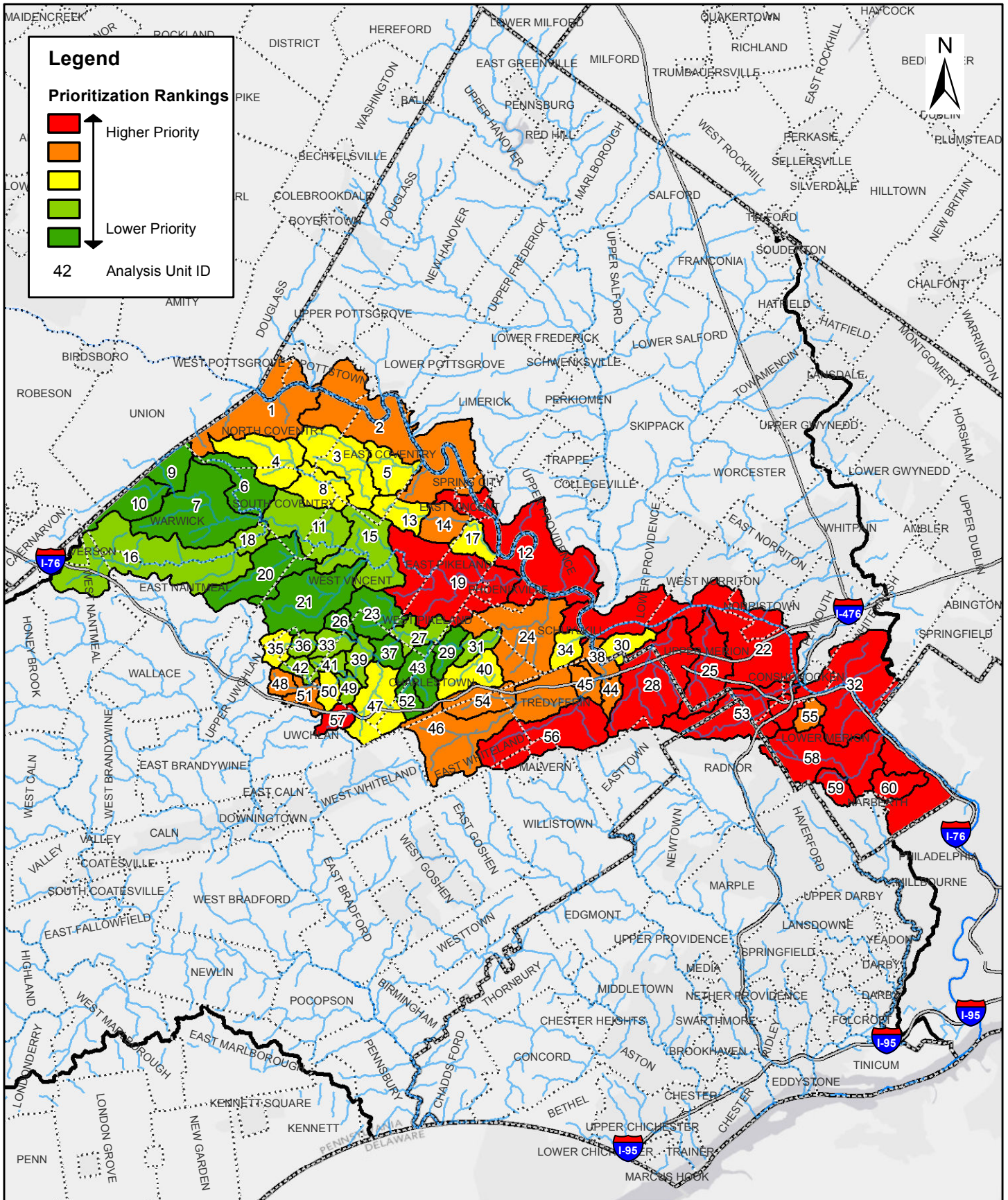
Final Prioritization Report Full Tabular Results North Shore Schuylkill River



					Water Quality Indicator Scores									
Analysis Unit	Overall Watershed Name	Prioritization Classification	Prioritization Rank (1 to 60)	Overall Prioritization Score	Water Quality Category Score	Estimated Sediment Loading per Square Mile	Estimated Nitrogen Loading per Square Mile	Estimated Phosphorous Loading per Square Mile	Percent of Stream Miles Impaired	Percent of Stream Miles with TMDL	Legacy dams per Square Mile	Sanitary Sewer Overflows per Square Mile	Site Specific Water Quality Issues per Square Mile	Water Degradation Sources per Square Mile
31	WEST BRANCH SKIPPACK CREEK	High Priority	22	4.50	4.4	4.0	6.0	6.0	4.0	10.0	1.0	6.0	1.0	3.0
32	EAST BRANCH PERKIOMEN CREEK	Low Priority	38	3.88	3.0	6.0	4.0	4.0	1.0	1.0	3.0	5.0	1.0	1.0
33	PERKIOMEN CREEK	High Priority	13	5.12	5.5	7.0	6.0	6.0	6.0	1.0	5.0	9.0	1.0	3.0
34	SANATOGA CREEK	Priority	30	4.15	4.6	7.0	6.0	6.0	1.0	1.0	9.0	7.0	1.0	4.0
35	TOWAMENCIN CREEK	Highest Priority	10	5.52	6.5	3.0	8.0	8.0	10.0	10.0	1.0	10.0	1.0	4.0
36	MINE RUN	Low Priority	45	3.52	3.8	6.0	5.0	5.0	1.0	1.0	6.0	9.0	1.0	1.0
37	HARTENSTINE CREEK	Priority	31	4.14	4.2	7.0	6.0	6.0	1.0	1.0	4.0	5.0	1.0	6.0
38	SKIPPACK CREEK	High Priority	18	4.86	5.4	5.0	6.0	6.0	6.0	10.0	2.0	7.0	1.0	5.0
39	SCHUYLKILL RIVER	High Priority	20	4.85	5.0	6.0	8.0	8.0	3.0	2.0	2.0	6.0	1.0	7.0
40	LODAL CREEK	Low Priority	38	3.88	3.8	5.0	7.0	7.0	1.0	1.0	6.0	1.0	1.0	5.0
41	POSSUM HOLLOW RUN	Low Priority	40	3.77	4.1	6.0	7.0	7.0	1.0	1.0	1.0	1.0	1.0	10.0
42	PERKIOMEN CREEK	High Priority	16	4.91	4.4	5.0	7.0	7.0	1.0	1.0	6.0	6.0	1.0	7.0
43	BROOKE EVANS CREEK	Priority	34	4.03	3.7	6.0	8.0	8.0	1.0	1.0	1.0	1.0	1.0	4.0
44	SCHOOLHOUSE RUN	Priority	36	3.94	3.0	4.0	7.0	7.0	1.0	1.0	4.0	1.0	1.0	1.0
45	MINGO CREEK	Priority	32	4.05	3.6	5.0	7.0	7.0	1.0	1.0	3.0	1.0	1.0	5.0
46	ZACHARIAS CREEK	High Priority	23	4.48	5.4	6.0	6.0	6.0	4.0	10.0	4.0	9.0	1.0	5.0
47	ZACHARIAS CREEK	Priority	26	4.40	5.2	5.0	5.0	5.0	6.0	10.0	1.0	7.0	1.0	6.0
48	STONY CREEK	Highest Priority	9	5.86	6.4	7.0	8.0	8.0	8.0	1.0	4.0	7.0	1.0	5.0
49	SCHUYLKILL RIVER	Highest Priority	12	5.36	4.8	6.0	8.0	8.0	1.0	1.0	3.0	8.0	1.0	8.0
50	PERKIOMEN CREEK	High Priority	18	4.86	4.4	6.0	7.0	7.0	1.0	1.0	5.0	8.0	1.0	5.0
51	SKIPPACK CREEK	High Priority	17	4.88	5.4	5.0	7.0	7.0	4.0	10.0	1.0	9.0	1.0	7.0
52	DOE RUN	Priority	35	3.99	4.0	5.0	8.0	8.0	1.0	1.0	1.0	1.0	1.0	9.0
53	MINE RUN	High Priority	14	4.96	4.1	5.0	8.0	8.0	1.0	1.0	1.0	9.0	1.0	4.0
54	SAWMILL RUN	Highest Priority	3	6.62	6.2	3.0	9.0	9.0	10.0	1.0	3.0	7.0	1.0	4.0
55	INDIAN CREEK	Highest Priority	1	6.95	7.0	4.0	9.0	9.0	10.0	1.0	6.0	9.0	1.0	7.0
56	PERKIOMEN CREEK	High Priority	15	4.92	4.0	4.0	9.0	9.0	1.0	1.0	1.0	7.0	1.0	5.0
57	PLYMOUTH CREEK	Highest Priority	2	6.83	7.8	10.0	9.0	9.0	10.0	1.0	2.0	8.0	1.0	7.0
58	SCHUYLKILL RIVER	Highest Priority	4	6.31	6.1	8.0	9.0	9.0	4.0	1.0	3.0	8.0	1.0	8.0
59	DIAMOND RUN	Highest Priority	7	5.93	7.4	6.0	10.0	10.0	10.0	1.0	1.0	7.0	1.0	10.0
60	SCHUYLKILL RIVER	Highest Priority	11	5.46	6.2	8.0	8.0	8.0	6.0	1.0	2.0	8.0	1.0	7.0

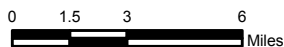
Appendix **D**

South Shore Schuylkill River



**Final Prioritization Report
Prioritization Exhibit
South Shore Schuylkill River**

AECOM



August 2012





Final Prioritization Report Tabular Summary South Shore Schuylkill River



Analysis Unit	Overall Watershed Name	Prioritization Classification	Prioritization Rank (1 to 60)	Overall Prioritization Score	Flooding Category Score	Watershed Health Category Score	Water Quality Category Score
1	SCHUYLKILL RIVER	High Priority	19	4.06	4.3	3.7	4.2
2	SCHUYLKILL RIVER	High Priority	13	4.85	5.0	4.6	5.0
3	PIGEON CREEK	Priority	36	2.92	3.2	3.1	2.5
4	PIGEON CREEK	Priority	35	2.98	3.1	3.2	2.6
5	PIGEON CREEK	Priority	30	3.14	3.2	2.9	3.3
6	ROCK RUN	Lowest Priority	52	2.17	2.9	1.6	2.0
7	FRENCH CREEK	Lowest Priority	54	2.11	2.3	1.6	2.4
8	PIGEON CREEK	Priority	34	3.00	3.1	2.8	3.0
9	FRENCH CREEK	Lowest Priority	60	1.49	1.6	1.8	1.0
10	PINE CREEK	Lowest Priority	59	1.82	2.2	1.3	2.0
11	FRENCH CREEK	Low Priority	43	2.74	2.9	2.5	2.8
12	SCHUYLKILL RIVER	Highest Priority	7	5.37	6.4	5.0	4.8
13	STONY RUN	Priority	32	3.10	2.3	4.2	2.6
14	STONY RUN	High Priority	15	4.50	5.0	4.9	3.7
15	FRENCH CREEK	Low Priority	42	2.77	3.8	2.5	2.1
16	SOUTH BRANCH FRENCH CREEK	Low Priority	45	2.45	2.6	2.2	2.6
17	STONY RUN	Priority	25	3.40	3.0	3.5	3.6
18	SOUTH BRANCH FRENCH CREEK	Low Priority	45	2.45	2.5	2.8	2.0
19	FRENCH CREEK	Highest Priority	9	5.01	6.1	4.6	4.5
20	BEAVER RUN	Lowest Priority	53	2.13	2.5	1.9	2.1
21	BIRCH RUN	Lowest Priority	49	2.31	2.3	2.4	2.2
22	SCHUYLKILL RIVER	Highest Priority	1	6.29	6.6	6.2	6.1
23	PICKERING CREEK	Lowest Priority	55	2.03	1.8	2.5	1.8
24	PICKERING CREEK	High Priority	20	3.95	5.2	3.0	3.8
25	CROW CREEK	Highest Priority	4	5.51	4.9	6.0	5.5
26	PICKERING CREEK	Lowest Priority	58	1.90	1.5	3.1	1.0
27	PICKERING CREEK	Low Priority	44	2.64	3.4	2.1	2.6
28	TROUT CREEK	Highest Priority	2	6.05	4.8	6.2	7.0
29	PICKERING CREEK	Lowest Priority	55	2.03	2.0	2.3	1.8
30	SCHUYLKILL RIVER	Priority	26	3.38	1.8	4.9	3.2
31	PICKERING CREEK	Low Priority	48	2.32	2.6	1.8	2.6
32	SCHUYLKILL RIVER	Highest Priority	6	5.39	5.2	4.6	6.2
33	PICKERING CREEK	Low Priority	47	2.35	2.4	2.8	1.8
34	VALLEY CREEK	Priority	29	3.15	2.9	3.4	3.1
35	PICKERING CREEK	Priority	32	3.10	1.3	4.5	3.2
36	PICKERING CREEK	Low Priority	41	2.84	2.5	3.2	2.7
37	PICKERING CREEK	Lowest Priority	57	1.97	2.8	1.6	1.7
38	VALLEY CREEK	High Priority	22	3.56	3.4	2.9	4.4
39	PICKERING CREEK	Low Priority	40	2.85	3.9	2.6	2.2
40	PICKERING CREEK	Priority	28	3.21	1.9	3.5	4.0
41	PICKERING CREEK	Low Priority	38	2.87	2.2	4.0	2.3
42	PICKERING CREEK	Low Priority	39	2.86	2.2	3.6	2.6
43	PICKERING CREEK	Lowest Priority	51	2.20	1.8	2.1	2.6
44	VALLEY CREEK	High Priority	21	3.88	2.3	5.6	3.5
45	VALLEY CREEK	High Priority	16	4.34	4.0	5.1	3.9
46	VALLEY CREEK	High Priority	18	4.22	3.8	4.6	4.2
47	PINE CREEK	Priority	31	3.12	2.5	3.6	3.2
48	PICKERING CREEK	High Priority	23	3.50	1.5	5.1	3.6



Final Prioritization Report
Tabular Summary
South Shore Schuylkill River



Analysis Unit	Overall Watershed Name	Prioritization Classification	Prioritization Rank (1 to 60)	Overall Prioritization Score	Flooding Category Score	Watershed Health Category Score	Water Quality Category Score
49	PICKERING CREEK	Low Priority	37	2.90	2.8	4.0	1.9
50	PICKERING CREEK	Priority	27	3.23	2.8	3.7	3.2
51	PICKERING CREEK	High Priority	24	3.45	2.6	4.9	2.8
52	PICKERING CREEK	Lowest Priority	50	2.21	1.4	3.1	2.0
53	GULPH CREEK	Highest Priority	3	5.68	5.8	4.1	7.1
54	VALLEY CREEK	High Priority	14	4.75	2.8	5.6	5.6
55	ARROWMINK	High Priority	16	4.34	3.7	5.0	4.2
56	LITTLE VALLEY CREEK	Highest Priority	10	4.97	3.8	4.7	6.2
57	PINE CREEK	Highest Priority	8	5.20	2.2	6.0	7.0
58	MILL CREEK	Highest Priority	11	4.92	4.5	4.1	6.1
59	TROUT RUN	Highest Priority	12	4.88	3.2	5.8	5.4
60	GULLEY RUN	Highest Priority	5	5.49	4.0	5.9	6.3



Final Prioritization Report Full Tabular Results South Shore Schuylkill River



					Flooding Indicator Scores							
Analysis Unit	Overall Watershed Name	Prioritization Classification	Prioritization Rank (1 to 60)	Overall Prioritization Score	Flooding Category Score	NFIP Claims per Square Mile	FEMA Risk Decile	Average Annualized Flood Loss per Square Mile	Percent Population in Floodplain	Percent Highly Erodible Land	Repetitive Loss Properties per Square Mile	Site Specific Flood Issues per Square Mile
1	SCHUYLKILL RIVER	High Priority	19	4.06	4.3	7.0	7.0	1.0	2.0	9.0	3.0	1.0
2	SCHUYLKILL RIVER	High Priority	13	4.85	5.0	7.0	8.0	6.0	2.0	4.0	4.0	1.0
3	PIGEON CREEK	Priority	36	2.92	3.2	3.0	5.0	1.0	3.0	9.0	1.0	1.0
4	PIGEON CREEK	Priority	35	2.98	3.1	2.0	4.0	1.0	3.0	10.0	1.0	1.0
5	PIGEON CREEK	Priority	30	3.14	3.2	4.0	4.0	1.0	6.0	6.0	1.0	6.0
6	ROCK RUN	Lowest Priority	52	2.17	2.9	1.0	3.0	1.0	4.0	10.0	1.0	1.0
7	FRENCH CREEK	Lowest Priority	54	2.11	2.3	1.0	3.0	1.0	4.0	6.0	1.0	1.0
8	PIGEON CREEK	Priority	34	3.00	3.1	3.0	4.0	1.0	2.0	10.0	1.0	1.0
9	FRENCH CREEK	Lowest Priority	60	1.49	1.6	1.0	1.0	1.0	3.0	4.0	1.0	1.0
10	PINE CREEK	Lowest Priority	59	1.82	2.2	1.0	1.0	1.0	4.0	7.0	1.0	1.0
11	FRENCH CREEK	Low Priority	43	2.74	2.9	1.0	4.0	5.0	2.0	5.0	1.0	1.0
12	SCHUYLKILL RIVER	Highest Priority	7	5.37	6.4	8.0	8.0	9.0	2.0	4.0	7.0	2.0
13	STONY RUN	Priority	32	3.10	2.3	1.0	3.0	3.0	3.0	4.0	1.0	1.0
14	STONY RUN	High Priority	15	4.50	5.0	5.0	4.0	7.0	4.0	7.0	4.0	1.0
15	FRENCH CREEK	Low Priority	42	2.77	3.8	3.0	4.0	6.0	4.0	7.0	1.0	1.0
16	SOUTH BRANCH FRENCH CREEK	Low Priority	45	2.45	2.6	1.0	5.0	3.0	2.0	4.0	1.0	1.0
17	STONY RUN	Priority	25	3.40	3.0	1.0	4.0	7.0	2.0	3.0	1.0	1.0
18	SOUTH BRANCH FRENCH CREEK	Low Priority	45	2.45	2.5	1.0	1.0	6.0	3.0	3.0	1.0	1.0
19	FRENCH CREEK	Highest Priority	9	5.01	6.1	6.0	7.0	10.0	2.0	5.0	5.0	5.0
20	BEAVER RUN	Lowest Priority	53	2.13	2.5	3.0	3.0	4.0	2.0	3.0	1.0	1.0
21	BIRCH RUN	Lowest Priority	49	2.31	2.3	4.0	3.0	3.0	1.0	3.0	1.0	1.0
22	SCHUYLKILL RIVER	Highest Priority	1	6.29	6.6	9.0	9.0	7.0	4.0	3.0	8.0	2.0
23	PICKERING CREEK	Lowest Priority	55	2.03	1.8	1.0	2.0	2.0	2.0	3.0	1.0	1.0
24	PICKERING CREEK	High Priority	20	3.95	5.2	3.0	7.0	7.0	2.0	9.0	2.0	8.0
25	CROW CREEK	Highest Priority	4	5.51	4.9	6.0	7.0	7.0	2.0	2.0	5.0	1.0
26	PICKERING CREEK	Lowest Priority	58	1.90	1.5	1.0	1.0	2.0	1.0	3.0	1.0	1.0
27	PICKERING CREEK	Low Priority	44	2.64	3.4	1.0	4.0	6.0	3.0	3.0	1.0	9.0
28	TROUT CREEK	Highest Priority	2	6.05	4.8	5.0	8.0	7.0	2.0	3.0	4.0	1.0
29	PICKERING CREEK	Lowest Priority	55	2.03	2.0	1.0	1.0	5.0	1.0	2.0	1.0	1.0
30	SCHUYLKILL RIVER	Priority	26	3.38	1.8	1.0	3.0	2.0	1.0	3.0	1.0	1.0
31	PICKERING CREEK	Low Priority	48	2.32	2.6	1.0	1.0	7.0	2.0	3.0	1.0	1.0
32	SCHUYLKILL RIVER	Highest Priority	6	5.39	5.2	7.0	9.0	7.0	2.0	2.0	5.0	1.0
33	PICKERING CREEK	Low Priority	47	2.35	2.4	1.0	1.0	5.0	4.0	3.0	1.0	1.0
34	VALLEY CREEK	Priority	29	3.15	2.9	1.0	4.0	6.0	1.0	4.0	1.0	1.0
35	PICKERING CREEK	Priority	32	3.10	1.3	1.0	1.0	1.0	1.0	3.0	1.0	1.0
36	PICKERING CREEK	Low Priority	41	2.84	2.5	1.0	1.0	4.0	7.0	3.0	1.0	1.0
37	PICKERING CREEK	Lowest Priority	57	1.97	2.8	1.0	1.0	6.0	6.0	3.0	1.0	1.0
38	VALLEY CREEK	High Priority	22	3.56	3.4	1.0	4.0	6.0	1.0	5.0	1.0	8.0
39	PICKERING CREEK	Low Priority	40	2.85	3.9	1.0	1.0	8.0	8.0	3.0	1.0	10.0
40	PICKERING CREEK	Priority	28	3.21	1.9	1.0	2.0	2.0	2.0	4.0	1.0	1.0



Final Prioritization Report Full Tabular Results South Shore Schuylkill River



Analysis Unit	Overall Watershed Name	Prioritization Classification	Prioritization Rank (1 to 60)	Overall Prioritization Score	Flooding Indicator Scores							
					Flooding Category Score	NFIP Claims per Square Mile	FEMA Risk Decile	Average Annualized Flood Loss per Square Mile	Percent Population in Floodplain	Percent Highly Erodible Land	Repetitive Loss Properties per Square Mile	Site Specific Flood Issues per Square Mile
41	PICKERING CREEK	Low Priority	38	2.87	2.2	1.0	1.0	4.0	4.0	3.0	1.0	1.0
42	PICKERING CREEK	Low Priority	39	2.86	2.2	1.0	1.0	4.0	3.0	4.0	1.0	1.0
43	PICKERING CREEK	Lowest Priority	51	2.20	1.8	1.0	2.0	3.0	1.0	3.0	1.0	1.0
44	VALLEY CREEK	High Priority	21	3.88	2.3	1.0	5.0	3.0	1.0	3.0	1.0	1.0
45	VALLEY CREEK	High Priority	16	4.34	4.0	1.0	4.0	10.0	4.0	4.0	1.0	1.0
46	VALLEY CREEK	High Priority	18	4.22	3.8	3.0	7.0	6.0	2.0	3.0	1.0	6.0
47	PINE CREEK	Priority	31	3.12	2.5	1.0	5.0	4.0	1.0	3.0	1.0	1.0
48	PICKERING CREEK	High Priority	23	3.50	1.5	1.0	1.0	2.0	1.0	3.0	1.0	1.0
49	PICKERING CREEK	Low Priority	37	2.90	2.8	1.0	1.0	5.0	6.0	4.0	1.0	1.0
50	PICKERING CREEK	Priority	27	3.23	2.8	1.0	1.0	6.0	4.0	4.0	1.0	1.0
51	PICKERING CREEK	High Priority	24	3.45	2.6	1.0	2.0	5.0	4.0	3.0	1.0	1.0
52	PICKERING CREEK	Lowest Priority	50	2.21	1.4	1.0	1.0	1.0	2.0	3.0	1.0	1.0
53	GULPH CREEK	Highest Priority	3	5.68	5.8	7.0	8.0	7.0	4.0	3.0	6.0	3.0
54	VALLEY CREEK	High Priority	14	4.75	2.8	1.0	3.0	7.0	1.0	3.0	1.0	1.0
55	ARROWMINK	High Priority	16	4.34	3.7	5.0	4.0	4.0	2.0	2.0	5.0	1.0
56	LITTLE VALLEY CREEK	Highest Priority	10	4.97	3.8	4.0	8.0	5.0	1.0	2.0	3.0	1.0
57	PINE CREEK	Highest Priority	8	5.20	2.2	1.0	5.0	3.0	1.0	2.0	1.0	1.0
58	MILL CREEK	Highest Priority	11	4.92	4.5	6.0	8.0	4.0	2.0	2.0	5.0	3.0
59	TROUT RUN	Highest Priority	12	4.88	3.2	6.0	7.0	1.0	1.0	1.0	4.0	1.0
60	GULLEY RUN	Highest Priority	5	5.49	4.0	7.0	7.0	1.0	1.0	1.0	6.0	7.0



Final Prioritization Report Full Tabular Results South Shore Schuylkill River



Watershed Health Indicator Scores

Analysis Unit	Overall Watershed Name	Prioritization Classification	Prioritization Rank (1 to 60)	Overall Prioritization Score	Watershed Health Category Score	Percent Impervious	Population Density	Percent Wetlands	Percent Hydric Soils	Riparian Buffer Quality	Percent Tree Cover	Critical Habitat Quality	Percentage of stream miles that are HQ or EV	Site Specific Watershed Health Issues per Square Mile	Percent Increase in Impervious Cover	Active Dams per Square Mile
1	SCHUYLKILL RIVER	High Priority	19	4.06	3.7	4.0	5.0	3.0	7.0	2.0	4.0	4.0	7.0	1.0	3.0	1.0
2	SCHUYLKILL RIVER	High Priority	13	4.85	4.6	5.0	6.0	3.0	10.0	2.0	6.0	6.0	6.0	1.0	4.0	2.0
3	PIGEON CREEK	Priority	36	2.92	3.1	2.0	4.0	4.0	5.0	4.0	6.0	3.0	1.0	1.0	3.0	1.0
4	PIGEON CREEK	Priority	35	2.98	3.2	1.0	3.0	4.0	8.0	10.0	2.0	2.0	1.0	1.0	1.0	1.0
5	PIGEON CREEK	Priority	30	3.14	2.9	2.0	5.0	4.0	6.0	2.0	6.0	4.0	1.0	1.0	1.0	1.0
6	ROCK RUN	Lowest Priority	52	2.17	1.6	1.0	3.0	4.0	4.0	1.0	2.0	2.0	1.0	1.0	1.0	1.0
7	FRENCH CREEK	Lowest Priority	54	2.11	1.6	1.0	1.0	3.0	2.0	3.0	2.0	2.0	1.0	1.0	1.0	1.0
8	PIGEON CREEK	Priority	34	3.00	2.8	2.0	3.0	5.0	8.0	3.0	5.0	3.0	1.0	1.0	1.0	1.0
9	FRENCH CREEK	Lowest Priority	60	1.49	1.8	1.0	1.0	3.0	2.0	5.0	2.0	1.0	1.0	1.0	1.0	1.0
10	PINE CREEK	Lowest Priority	59	1.82	1.3	1.0	1.0	3.0	3.0	1.0	2.0	1.0	1.0	1.0	1.0	1.0
11	FRENCH CREEK	Low Priority	43	2.74	2.5	1.0	3.0	3.0	4.0	2.0	5.0	3.0	1.0	1.0	4.0	6.0
12	SCHUYLKILL RIVER	Highest Priority	7	5.37	5.0	5.0	7.0	3.0	10.0	2.0	6.0	5.0	10.0	1.0	6.0	4.0
13	STONY RUN	Priority	32	3.10	4.2	2.0	4.0	8.0	4.0	10.0	7.0	5.0	1.0	1.0	1.0	1.0
14	STONY RUN	High Priority	15	4.50	4.9	3.0	5.0	9.0	5.0	10.0	7.0	5.0	1.0	1.0	4.0	1.0
15	FRENCH CREEK	Low Priority	42	2.77	2.5	1.0	3.0	6.0	4.0	3.0	6.0	3.0	1.0	1.0	1.0	1.0
16	SOUTH BRANCH FRENCH CREEK	Low Priority	45	2.45	2.2	1.0	1.0	3.0	3.0	5.0	4.0	3.0	1.0	1.0	1.0	1.0
17	STONY RUN	Priority	25	3.40	3.5	2.0	3.0	5.0	4.0	8.0	6.0	4.0	1.0	1.0	1.0	1.0
18	SOUTH BRANCH FRENCH CREEK	Low Priority	45	2.45	2.8	1.0	2.0	4.0	3.0	10.0	2.0	2.0	1.0	1.0	1.0	1.0
19	FRENCH CREEK	Highest Priority	9	5.01	4.6	4.0	6.0	5.0	6.0	4.0	6.0	6.0	9.0	1.0	1.0	4.0
20	BEAVER RUN	Lowest Priority	53	2.13	1.9	1.0	2.0	3.0	2.0	4.0	2.0	3.0	1.0	1.0	1.0	1.0
21	BIRCH RUN	Lowest Priority	49	2.31	2.4	1.0	3.0	4.0	3.0	4.0	3.0	4.0	1.0	1.0	4.0	1.0
22	SCHUYLKILL RIVER	Highest Priority	1	6.29	6.2	8.0	7.0	3.0	9.0	4.0	6.0	7.0	10.0	1.0	3.0	5.0
23	PICKERING CREEK	Lowest Priority	55	2.03	2.5	1.0	1.0	3.0	2.0	6.0	6.0	4.0	1.0	1.0	1.0	1.0
24	PICKERING CREEK	High Priority	20	3.95	3.0	3.0	5.0	3.0	5.0	2.0	5.0	4.0	1.0	1.0	2.0	1.0
25	CROW CREEK	Highest Priority	4	5.51	6.0	7.0	7.0	8.0	10.0	3.0	6.0	9.0	10.0	1.0	5.0	1.0
26	PICKERING CREEK	Lowest Priority	58	1.90	3.1	1.0	3.0	3.0	2.0	9.0	6.0	3.0	1.0	1.0	1.0	1.0
27	PICKERING CREEK	Low Priority	44	2.64	2.1	1.0	3.0	3.0	2.0	4.0	3.0	3.0	1.0	1.0	1.0	1.0
28	TROUT CREEK	Highest Priority	2	6.05	6.2	7.0	6.0	9.0	9.0	5.0	6.0	9.0	10.0	1.0	3.0	1.0
29	PICKERING CREEK	Lowest Priority	55	2.03	2.3	1.0	2.0	3.0	2.0	5.0	5.0	3.0	1.0	1.0	1.0	1.0
30	SCHUYLKILL RIVER	Priority	26	3.38	4.9	2.0	3.0	9.0	10.0	10.0	7.0	5.0	10.0	1.0	1.0	1.0
31	PICKERING CREEK	Low Priority	48	2.32	1.8	1.0	4.0	5.0	4.0	1.0	2.0	2.0	1.0	1.0	1.0	1.0
32	SCHUYLKILL RIVER	Highest Priority	6	5.39	4.6	5.0	7.0	3.0	7.0	2.0	6.0	7.0	10.0	1.0	1.0	2.0
33	PICKERING CREEK	Low Priority	47	2.35	2.8	1.0	3.0	3.0	2.0	9.0	3.0	3.0	1.0	1.0	1.0	1.0
34	VALLEY CREEK	Priority	29	3.15	3.4	2.0	5.0	9.0	6.0	6.0	2.0	3.0	1.0	1.0	2.0	1.0
35	PICKERING CREEK	Priority	32	3.10	4.5	3.0	6.0	3.0	2.0	10.0	5.0	6.0	1.0	1.0	7.0	1.0
36	PICKERING CREEK	Low Priority	41	2.84	3.2	1.0	3.0	3.0	3.0	9.0	6.0	4.0	1.0	1.0	1.0	1.0
37	PICKERING CREEK	Lowest Priority	57	1.97	1.6	1.0	3.0	3.0	2.0	1.0	2.0	3.0	1.0	1.0	1.0	1.0
38	VALLEY CREEK	High Priority	22	3.56	2.9	2.0	2.0	10.0	10.0	1.0	2.0	4.0	1.0	8.0	1.0	1.0
39	PICKERING CREEK	Low Priority	40	2.85	2.6	1.0	3.0	3.0	2.0	7.0	4.0	3.0	1.0	1.0	1.0	1.0
40	PICKERING CREEK	Priority	28	3.21	3.5	2.0	2.0	8.0	4.0	9.0	3.0	3.0	1.0	1.0	4.0	1.0



Final Prioritization Report Full Tabular Results South Shore Schuylkill River



Watershed Health Indicator Scores

Analysis Unit	Overall Watershed Name	Prioritization Classification	Prioritization Rank (1 to 60)	Overall Prioritization Score	Watershed Health Category Score	Percent Impervious	Population Density	Percent Wetlands	Percent Hydric Soils	Riparian Buffer Quality	Percent Tree Cover	Critical Habitat Quality	Percentage of stream miles that are HQ or EV	Site Specific Watershed Health Issues per Square Mile	Percent Increase in Impervious Cover	Active Dams per Square Mile
41	PICKERING CREEK	Low Priority	38	2.87	4.0	2.0	4.0	3.0	3.0	10.0	6.0	4.0	1.0	1.0	5.0	1.0
42	PICKERING CREEK	Low Priority	39	2.86	3.6	1.0	5.0	3.0	3.0	10.0	6.0	3.0	1.0	1.0	3.0	1.0
43	PICKERING CREEK	Lowest Priority	51	2.20	2.1	1.0	2.0	3.0	3.0	4.0	4.0	3.0	1.0	1.0	1.0	1.0
44	VALLEY CREEK	High Priority	21	3.88	5.6	5.0	7.0	10.0	9.0	7.0	6.0	7.0	1.0	1.0	6.0	1.0
45	VALLEY CREEK	High Priority	16	4.34	5.1	5.0	7.0	10.0	9.0	3.0	6.0	5.0	1.0	1.0	9.0	1.0
46	VALLEY CREEK	High Priority	18	4.22	4.6	3.0	5.0	5.0	7.0	10.0	6.0	5.0	1.0	1.0	3.0	1.0
47	PINE CREEK	Priority	31	3.12	3.6	2.0	5.0	3.0	3.0	9.0	3.0	4.0	1.0	1.0	4.0	1.0
48	PICKERING CREEK	High Priority	23	3.50	5.1	4.0	6.0	3.0	3.0	10.0	6.0	5.0	1.0	1.0	10.0	1.0
49	PICKERING CREEK	Low Priority	37	2.90	4.0	2.0	5.0	3.0	3.0	10.0	6.0	5.0	1.0	1.0	3.0	1.0
50	PICKERING CREEK	Priority	27	3.23	3.7	2.0	4.0	3.0	4.0	9.0	6.0	4.0	1.0	1.0	1.0	1.0
51	PICKERING CREEK	High Priority	24	3.45	4.9	4.0	5.0	4.0	4.0	10.0	6.0	5.0	1.0	1.0	6.0	1.0
52	PICKERING CREEK	Lowest Priority	50	2.21	3.1	1.0	3.0	9.0	3.0	9.0	2.0	3.0	1.0	1.0	1.0	1.0
53	GULPH CREEK	Highest Priority	3	5.68	4.1	3.0	7.0	7.0	8.0	3.0	3.0	8.0	10.0	1.0	1.0	1.0
54	VALLEY CREEK	High Priority	14	4.75	5.6	7.0	3.0	7.0	9.0	7.0	6.0	6.0	1.0	1.0	6.0	1.0
55	ARROWMINK	High Priority	16	4.34	5.0	3.0	5.0	6.0	9.0	10.0	3.0	8.0	10.0	1.0	1.0	1.0
56	LITTLE VALLEY CREEK	Highest Priority	10	4.97	4.7	6.0	6.0	8.0	8.0	3.0	4.0	7.0	1.0	1.0	4.0	1.0
57	PINE CREEK	Highest Priority	8	5.20	6.0	7.0	6.0	4.0	5.0	10.0	6.0	8.0	1.0	1.0	5.0	1.0
58	MILL CREEK	Highest Priority	11	4.92	4.1	3.0	7.0	10.0	5.0	2.0	3.0	8.0	10.0	3.0	1.0	1.0
59	TROUT RUN	Highest Priority	12	4.88	5.8	5.0	7.0	10.0	7.0	9.0	3.0	9.0	10.0	1.0	1.0	1.0
60	GULLEY RUN	Highest Priority	5	5.49	5.9	5.0	8.0	10.0	5.0	9.0	4.0	9.0	10.0	1.0	1.0	1.0



Final Prioritization Report

Full Tabular Results

South Shore Schuylkill River



Water Quality Indicator Scores

Analysis Unit	Overall Watershed Name	Prioritization Classification	Prioritization Rank (1 to 60)	Overall Prioritization Score	Water Quality Category Score	Estimated Sediment Loading per Square Mile	Estimated Nitrogen Loading per Square Mile	Estimated Phosphorous Loading per Square Mile	Percent of Stream Miles Impaired	Percent of Stream Miles with TMDL	Legacy dams per Square Mile	Sanitary Sewer Overflows per Square Mile	Site Specific Water Quality Issues per Square Mile	Water Degradation Sources per Square Mile
1	SCHUYLKILL RIVER	High Priority	19	4.06	4.2	5.0	7.0	7.0	1.0	1.0	3.0	7.0	1.0	7.0
2	SCHUYLKILL RIVER	High Priority	13	4.85	5.0	6.0	8.0	8.0	3.0	2.0	2.0	6.0	1.0	7.0
3	PIGEON CREEK	Priority	36	2.92	2.5	4.0	4.0	4.0	1.0	1.0	5.0	1.0	1.0	1.0
4	PIGEON CREEK	Priority	35	2.98	2.6	6.0	2.0	2.0	1.0	1.0	3.0	1.0	1.0	4.0
5	PIGEON CREEK	Priority	30	3.14	3.3	4.0	5.0	5.0	1.0	1.0	10.0	1.0	1.0	3.0
6	ROCK RUN	Lowest Priority	52	2.17	2.0	5.0	1.0	1.0	1.0	1.0	4.0	1.0	1.0	1.0
7	FRENCH CREEK	Lowest Priority	54	2.11	2.4	4.0	2.0	2.0	1.0	1.0	5.0	1.0	1.0	4.0
8	PIGEON CREEK	Priority	34	3.00	3.0	5.0	4.0	4.0	1.0	1.0	7.0	1.0	1.0	3.0
9	FRENCH CREEK	Lowest Priority	60	1.49	1.0	1.0	1.0	1.0	1.0	1.0	1.0	1.0	1.0	1.0
10	PINE CREEK	Lowest Priority	59	1.82	2.0	2.0	1.0	1.0	1.0	1.0	5.0	1.0	1.0	6.0
11	FRENCH CREEK	Low Priority	43	2.74	2.8	5.0	3.0	3.0	1.0	1.0	5.0	1.0	1.0	4.0
12	SCHUYLKILL RIVER	Highest Priority	7	5.37	4.8	6.0	8.0	8.0	1.0	1.0	3.0	8.0	1.0	8.0
13	STONY RUN	Priority	32	3.10	2.6	2.0	6.0	6.0	1.0	1.0	1.0	1.0	1.0	5.0
14	STONY RUN	High Priority	15	4.50	3.7	5.0	6.0	6.0	1.0	1.0	5.0	2.0	1.0	6.0
15	FRENCH CREEK	Low Priority	42	2.77	2.1	2.0	2.0	2.0	1.0	1.0	5.0	1.0	1.0	5.0
16	SOUTH BRANCH FRENCH CREEK	Low Priority	45	2.45	2.6	4.0	3.0	3.0	1.0	1.0	5.0	1.0	1.0	4.0
17	STONY RUN	Priority	25	3.40	3.6	5.0	5.0	5.0	1.0	1.0	1.0	7.0	1.0	6.0
18	SOUTH BRANCH FRENCH CREEK	Low Priority	45	2.45	2.0	6.0	1.0	1.0	1.0	1.0	1.0	1.0	1.0	1.0
19	FRENCH CREEK	Highest Priority	9	5.01	4.5	5.0	7.0	7.0	1.0	1.0	7.0	8.0	1.0	6.0
20	BEAVER RUN	Lowest Priority	53	2.13	2.1	4.0	1.0	1.0	1.0	1.0	7.0	1.0	1.0	1.0
21	BIRCH RUN	Lowest Priority	49	2.31	2.2	3.0	2.0	2.0	1.0	1.0	8.0	1.0	1.0	2.0
22	SCHUYLKILL RIVER	Highest Priority	1	6.29	6.1	8.0	9.0	9.0	4.0	1.0	3.0	8.0	1.0	8.0
23	PICKERING CREEK	Lowest Priority	55	2.03	1.8	3.0	2.0	2.0	1.0	1.0	1.0	3.0	1.0	1.0
24	PICKERING CREEK	High Priority	20	3.95	3.8	4.0	6.0	6.0	1.0	1.0	5.0	6.0	1.0	6.0
25	CROW CREEK	Highest Priority	4	5.51	5.5	4.0	9.0	9.0	5.0	1.0	7.0	6.0	1.0	6.0
26	PICKERING CREEK	Lowest Priority	58	1.90	1.0	1.0	1.0	1.0	1.0	1.0	1.0	1.0	1.0	1.0
27	PICKERING CREEK	Low Priority	44	2.64	2.6	3.0	2.0	2.0	1.0	1.0	8.0	7.0	1.0	1.0
28	TROUT CREEK	Highest Priority	2	6.05	7.0	5.0	9.0	9.0	8.0	10.0	6.0	7.0	1.0	7.0
29	PICKERING CREEK	Lowest Priority	55	2.03	1.8	2.0	2.0	2.0	1.0	1.0	6.0	1.0	1.0	1.0
30	SCHUYLKILL RIVER	Priority	26	3.38	3.2	6.0	5.0	5.0	1.0	1.0	1.0	6.0	1.0	1.0
31	PICKERING CREEK	Low Priority	48	2.32	2.6	3.0	4.0	4.0	1.0	1.0	9.0	1.0	1.0	1.0
32	SCHUYLKILL RIVER	Highest Priority	6	5.39	6.2	8.0	8.0	8.0	6.0	1.0	2.0	8.0	1.0	7.0
33	PICKERING CREEK	Low Priority	47	2.35	1.8	4.0	2.0	2.0	1.0	1.0	1.0	1.0	1.0	1.0
34	VALLEY CREEK	Priority	29	3.15	3.1	4.0	5.0	5.0	1.0	1.0	7.0	1.0	1.0	4.0
35	PICKERING CREEK	Priority	32	3.10	3.2	7.0	6.0	6.0	1.0	1.0	1.0	1.0	1.0	1.0
36	PICKERING CREEK	Low Priority	41	2.84	2.7	5.0	3.0	3.0	1.0	1.0	8.0	1.0	1.0	1.0
37	PICKERING CREEK	Lowest Priority	57	1.97	1.7	1.0	1.0	1.0	1.0	1.0	10.0	1.0	1.0	1.0
38	VALLEY CREEK	High Priority	22	3.56	4.4	6.0	4.0	4.0	3.0	1.0	7.0	7.0	8.0	1.0
39	PICKERING CREEK	Low Priority	40	2.85	2.2	4.0	2.0	2.0	1.0	1.0	1.0	1.0	1.0	5.0
40	PICKERING CREEK	Priority	28	3.21	4.0	9.0	5.0	5.0	1.0	1.0	1.0	1.0	1.0	7.0



Final Prioritization Report Full Tabular Results South Shore Schuylkill River



Water Quality Indicator Scores

Analysis Unit	Overall Watershed Name	Prioritization Classification	Prioritization Rank (1 to 60)	Overall Prioritization Score	Water Quality Category Score	Estimated Sediment Loading per Square Mile	Estimated Nitrogen Loading per Square Mile	Estimated Phosphorous Loading per Square Mile	Percent of Stream Miles Impaired	Percent of Stream Miles with TMDL	Legacy dams per Square Mile	Sanitary Sewer Overflows per Square Mile	Site Specific Water Quality Issues per Square Mile	Water Degradation Sources per Square Mile
41	PICKERING CREEK	Low Priority	38	2.87	2.3	2.0	2.0	2.0	1.0	1.0	8.0	1.0	1.0	5.0
42	PICKERING CREEK	Low Priority	39	2.86	2.6	6.0	4.0	4.0	1.0	1.0	1.0	1.0	1.0	1.0
43	PICKERING CREEK	Lowest Priority	51	2.20	2.6	4.0	2.0	2.0	1.0	1.0	7.0	5.0	1.0	1.0
44	VALLEY CREEK	High Priority	21	3.88	3.5	4.0	8.0	8.0	1.0	1.0	1.0	8.0	1.0	1.0
45	VALLEY CREEK	High Priority	16	4.34	3.9	7.0	7.0	7.0	1.0	1.0	1.0	8.0	1.0	1.0
46	VALLEY CREEK	High Priority	18	4.22	4.2	5.0	6.0	6.0	1.0	1.0	7.0	7.0	1.0	6.0
47	PINE CREEK	Priority	31	3.12	3.2	4.0	4.0	4.0	1.0	1.0	7.0	4.0	1.0	4.0
48	PICKERING CREEK	High Priority	23	3.50	3.6	7.0	6.0	6.0	1.0	1.0	1.0	1.0	1.0	5.0
49	PICKERING CREEK	Low Priority	37	2.90	1.9	2.0	4.0	4.0	1.0	1.0	1.0	2.0	1.0	1.0
50	PICKERING CREEK	Priority	27	3.23	3.2	3.0	5.0	5.0	1.0	1.0	10.0	5.0	1.0	1.0
51	PICKERING CREEK	High Priority	24	3.45	2.8	2.0	7.0	7.0	1.0	1.0	1.0	6.0	1.0	1.0
52	PICKERING CREEK	Lowest Priority	50	2.21	2.0	4.0	3.0	3.0	1.0	1.0	1.0	1.0	1.0	1.0
53	GULPH CREEK	Highest Priority	3	5.68	7.1	7.0	7.0	7.0	10.0	1.0	9.0	7.0	1.0	5.0
54	VALLEY CREEK	High Priority	14	4.75	5.6	10.0	8.0	8.0	1.0	1.0	5.0	6.0	1.0	8.0
55	ARROWMINK	High Priority	16	4.34	4.2	6.0	6.0	6.0	1.0	1.0	8.0	5.0	1.0	5.0
56	LITTLE VALLEY CREEK	Highest Priority	10	4.97	6.2	7.0	8.0	8.0	6.0	1.0	4.0	8.0	1.0	7.0
57	PINE CREEK	Highest Priority	8	5.20	7.0	4.0	9.0	9.0	10.0	1.0	7.0	6.0	1.0	8.0
58	MILL CREEK	Highest Priority	11	4.92	6.1	5.0	7.0	7.0	10.0	1.0	9.0	3.0	1.0	2.0
59	TROUT RUN	Highest Priority	12	4.88	5.4	2.0	8.0	8.0	10.0	1.0	9.0	1.0	1.0	1.0
60	GULLEY RUN	Highest Priority	5	5.49	6.3	2.0	8.0	8.0	10.0	1.0	6.0	9.0	1.0	6.0