


# Forensic DNA Testing: Beyond CSI

John M. Butler, Ph.D.  
National Institute of Standards and Technology

Rockville Science Center  
May 19, 2009




**CSI:  
CRIME SCENE INVESTIGATION**

GREG SANDERS

**Unfortunately, current DNA testing cannot be performed as quickly as a commercial break...**

**DNA LAB**

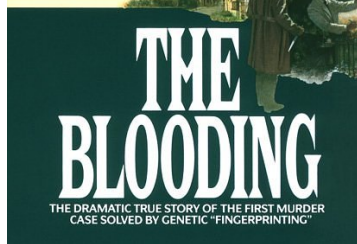
**Real labs have better lighting but fewer instruments. The instruments on CSI are real – they just do not collect data as quickly as shown on TV.**



## The Beginning of My Interest in Forensic DNA Typing



You never know the impact you can have on another person

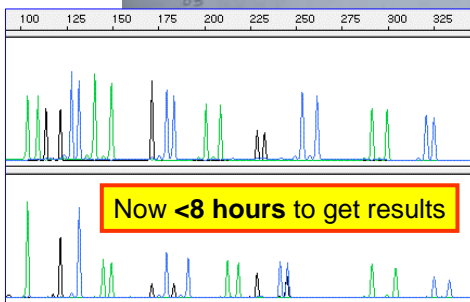


- At the age of 15, I decided to pursue a career in forensic science
- This book was given to me in 1990 by **Dave Feldman**, the Acting Police Chief for Fort Collins, Colorado
- It describes the first use of DNA (in 1986) to solve a double rape-homicide case in England

## Progress Since 1995...

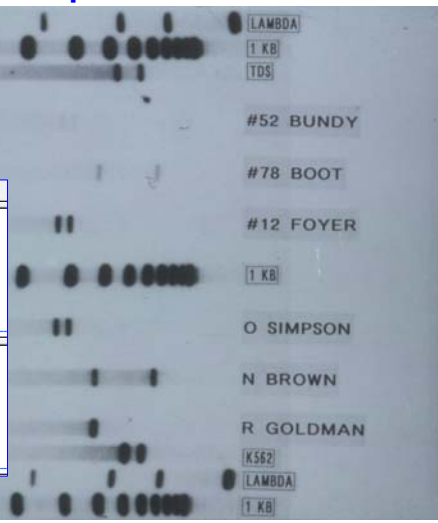


Almost 8 weeks needed to get results



Now <8 hours to get results

O.J. Simpson DNA testing was performed with RFLP



We are finding new ways to use DNA...

BIZARRO



## Applications of Forensic DNA Typing

- Forensic cases -- matching suspect with evidence
- Paternity testing -- identifying father
- Missing persons investigations
- Military DNA "dog tag"
- Convicted felon DNA databases
- Mass disasters -- putting pieces back together
- Historical investigations

Involves generation of DNA profiles usually with the same core STR (**short tandem repeat**) markers and then **MATCHING TO REFERENCE SAMPLE**

## DNA Testing Requires a Reference Sample

A DNA profile by itself is fairly useless because it has no context...

DNA analysis for identity only works by comparison – **you need a reference sample**



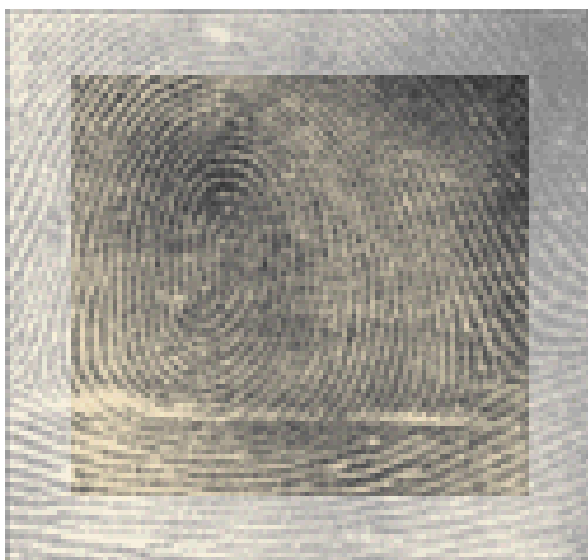
**Crime Scene Evidence** compared to **Suspect(s)** (Forensic Case)

**Child** compared to **Alleged Father** (Paternity Case)

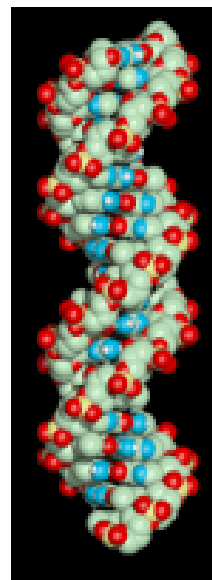
**Victim's Remains** compared to **Biological Relative** (Mass Disaster ID)

**Soldier's Remains** compared to **Direct Reference Sample** (Armed Forces ID)

## Methods for Human Identification

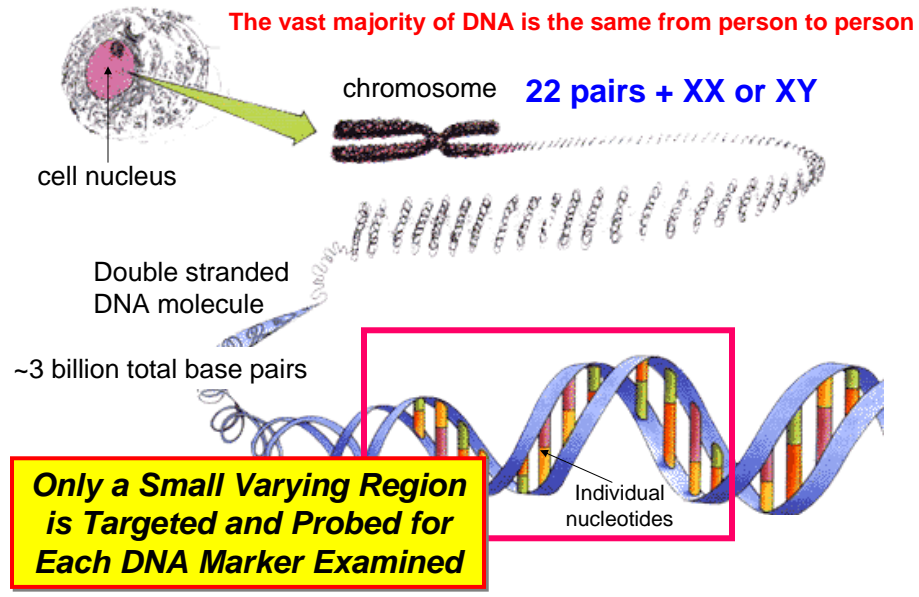


Fingerprints have been used since 1901



DNA since 1986

# DNA in the Cell

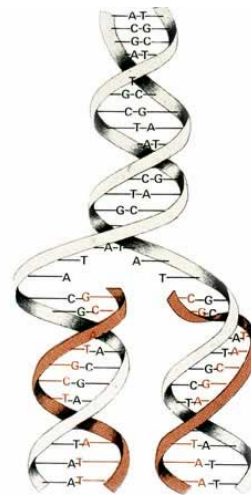


## Information Storage

You know that no two people share the same fingerprint, but did you know that the cells that make up your body also have a unique fingerprint unlike anyone else's? Your cells contain a complex molecule that we call DNA. Unless you have an identical twin, no one else has DNA just like yours.

Scientists can analyze DNA. If a criminal leaves DNA at a crime scene, police can use it to prove who committed the crime. At NIST, we help crime labs analyze DNA accurately. We make DNA standards so crime labs can tell if their results are right.

**Text Storage is by the order of letters, words and paragraphs**



**DNA Storage is by the order of nucleotides, genes and chromosomes**

## Identification of Information

### Printed Information

Library

Book

Chapter

Page Number

Line on Page

Word

Letter

### Genetic Information

Body

Cell

Nucleus

Chromosome

**Locus** (part of chromosome)

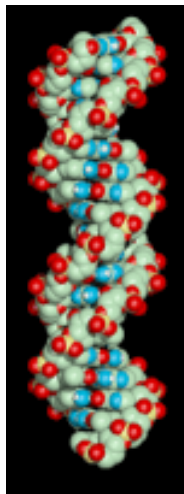
Short DNA sequence

DNA nucleotides

D13S317

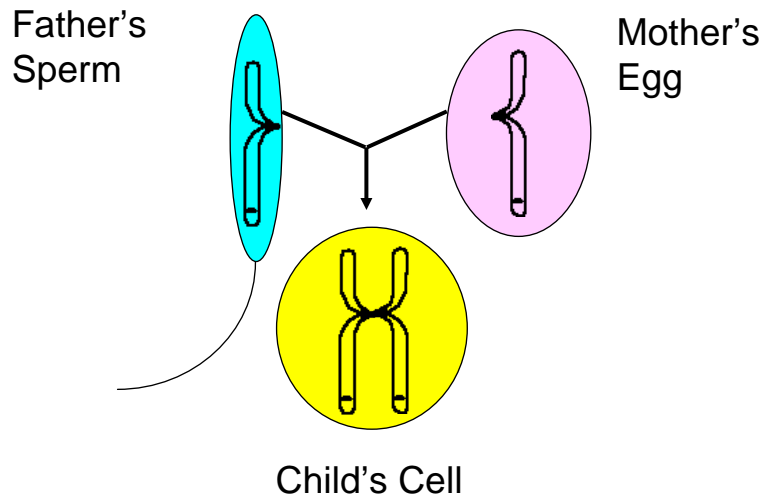


## Characteristics of DNA

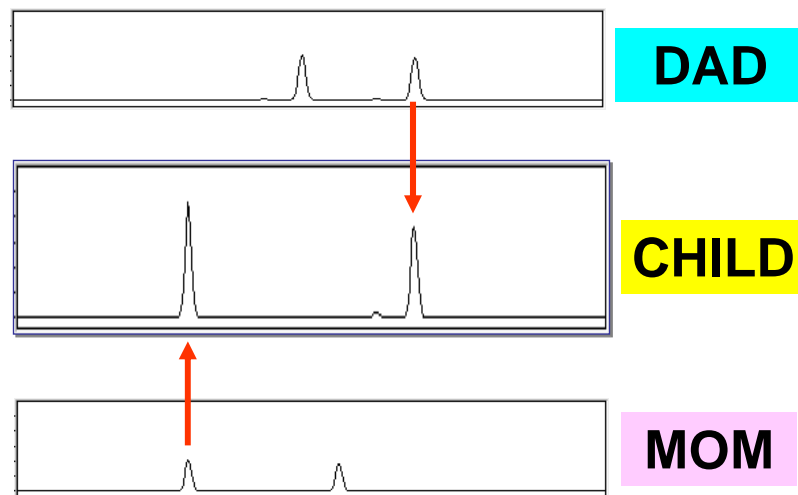


- Each person has a unique DNA profile (except identical twins).
- Each person's DNA is the same in every cell.
- An individual's DNA profile remains the same throughout life.
- Half of your DNA comes from your mother and half from your father.

## Our DNA Comes from our Parents



## Inheritance Pattern of DNA Profiles

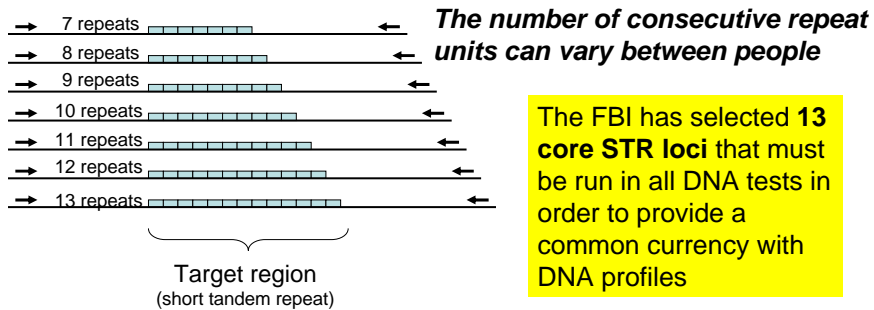


## Short Tandem Repeat (STR) Markers

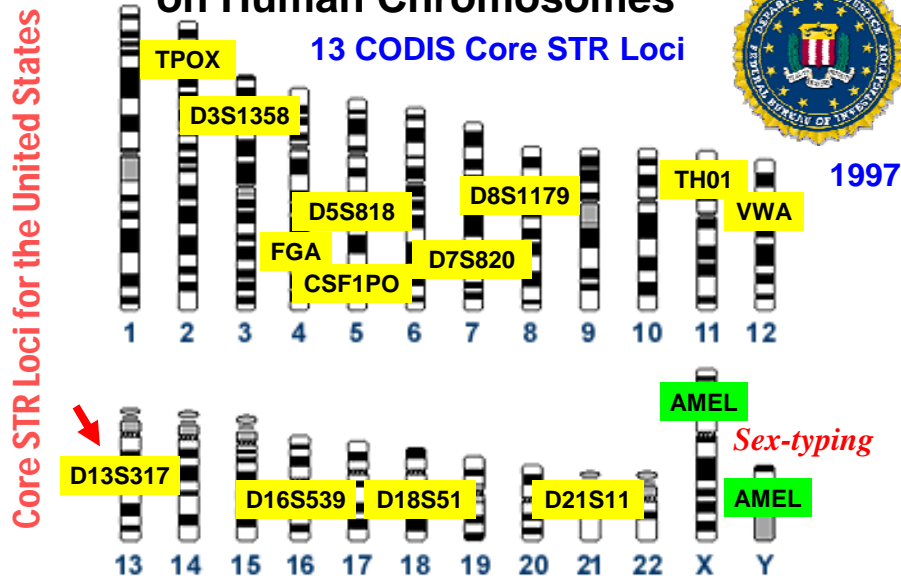
*An accordion-like DNA sequence that occurs between genes*

TCCCAAGCTCTTCCTCTTCCCTAGATCAATACAGACAGAAGACA  
 GGTG**GATAGATAGATAGATAGATAGATAGATAGATAGATAGATA**  
**TAGATA**TCATTGAAAGACAAAACAGAGATGGATGATAGATACAT  
 GCTTACAGATGCACAC

**= 11 GATA repeats ("11" is all that is reported)**



## Position of Forensic STR Markers on Human Chromosomes





## National DNA Index System (NDIS)

No names are associated with DNA profiles uploaded to NDIS

If my profile was entered for searching:

16,17-17,18-21,22-12,14-28,30-14,16-12,13-11,14-9,9-9,11-6,6-8,8-10,10



**FBI**  
**LABORATORY**

<http://www.fbi.gov/hq/lab/codis/index>

### Combined DNA Index System (CODIS)

Launched in October 1998

Used for linking cases with repeat offenders

Convicted offenders' samples along with a missing persons

... markers

... investigations aided nationwide as of March 2009

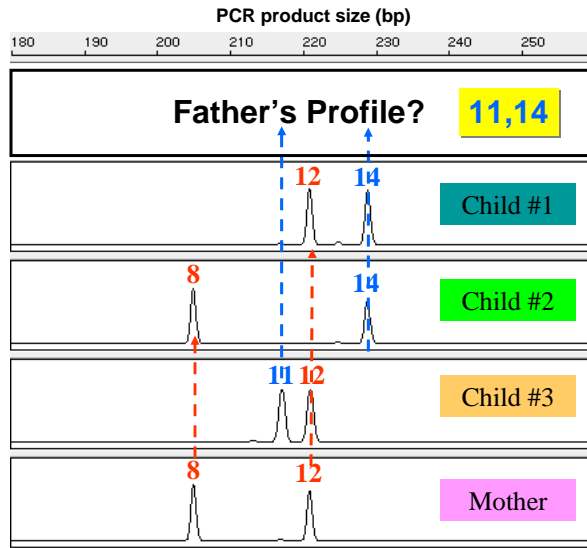
**Contains more than 7.0 million DNA profiles**

**FBI requires labs putting samples into the CODIS database to run the NIST DNA standard**

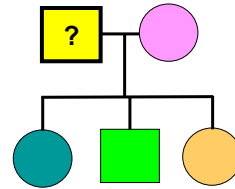
## The Role of NIST Scientists

- **Develop DNA standards** so that laboratories around the world may compare their results.
- **Conduct tests of laboratories** around the world to insure accurate results in DNA testing.
- **Develop new DNA tests** which are more rapid and efficient than those currently used.

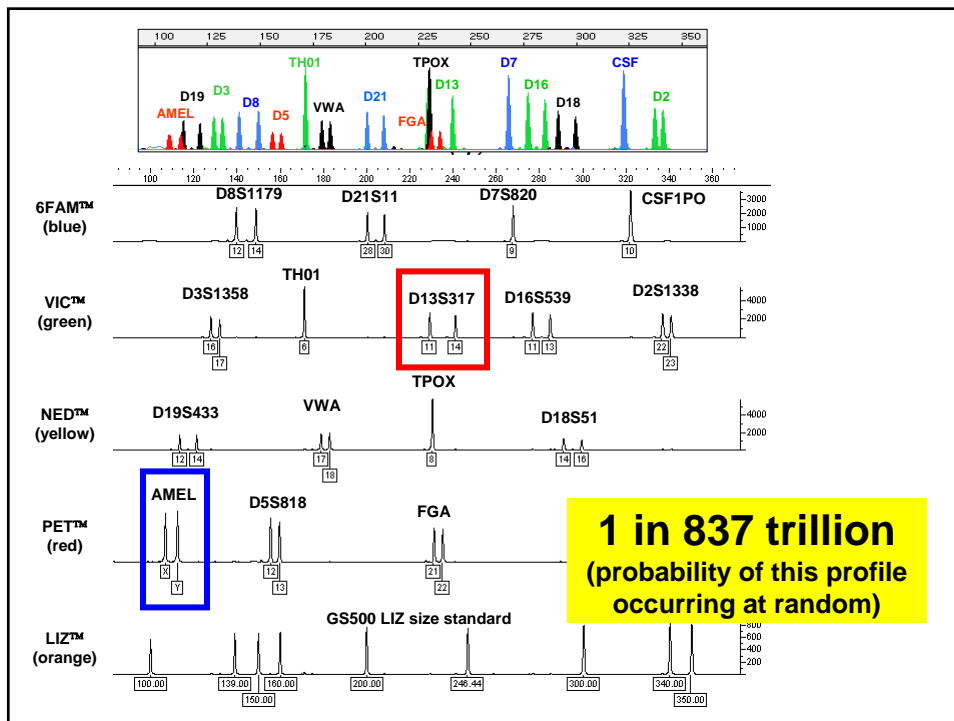
# PATERNITY TESTING



Alleged Father(s) is asked to donate DNA sample



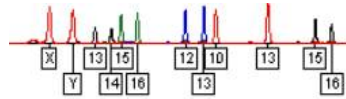
STR Alleles from D13S317





December 14, 2003

“We got him!”



DNA Profile

**Saddam was known to have many “stunt doubles” that acted as decoys for his own safety**



Saddam Hussein’s capture was verified with DNA testing conducted in Rockville, MD at the **Armed Forces DNA Identification Laboratory**

Source: www.cnn.com; *The Scientist* Dec 19, 2003

## Biological Relatives Served as References

Captured December 13, 2003



**Matching Y-STR Haplotype Used to Confirm Identity**



(along with allele sharing from autosomal STRs)



Uday and Qusay Hussein

Killed July 22, 2003

**Is this man really Sadaam Hussein?**

Butler, J.M. (2005) *Forensic DNA Typing, 2<sup>nd</sup> Edition*, Box 23.1, p. 534

Article published March 11, 2009

OPEN ACCESS Freely available online

<http://www.plosone.org>

PLoS one

## Mystery Solved: The Identification of the Two Missing Romanov Children Using DNA Analysis

Michael D. Coble<sup>1,3\*</sup>, Odile M. Loreille<sup>1,3</sup>, Mark J. Wadhams<sup>1</sup>, Suni M. Edson<sup>1</sup>, Kerry Maynard<sup>1</sup>, Carna E. Meyer<sup>1</sup>, Harald Niederstätter<sup>2</sup>, Cordula Berger<sup>2</sup>, Burkhard Berger<sup>2</sup>, Anthony B. Falsetti<sup>3</sup>, Peter Gill<sup>4,5</sup>, Walther Parson<sup>2</sup>, Louis N. Finelli<sup>1</sup>

**1** Armed Forces DNA Identification Laboratory, Armed Forces Institute of Pathology, Rockville, Maryland, United States of America, **2** Institute of Legal Medicine, Innsbruck Medical University, Innsbruck, Austria, **3** University of Florida, Gainesville, Florida, United States of America, **4** Department of Pure and Applied Chemistry, University of Strathclyde, Glasgow, United Kingdom, **5** Institute of Forensic Medicine, University of Oslo, Oslo, Norway

## The Romanovs – Russia's Royal Family (1913)

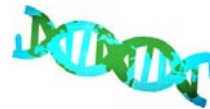
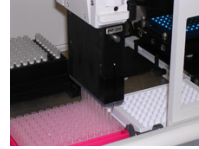
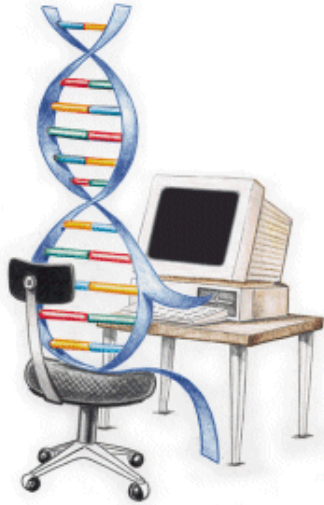


Photo taken five years before they were killed

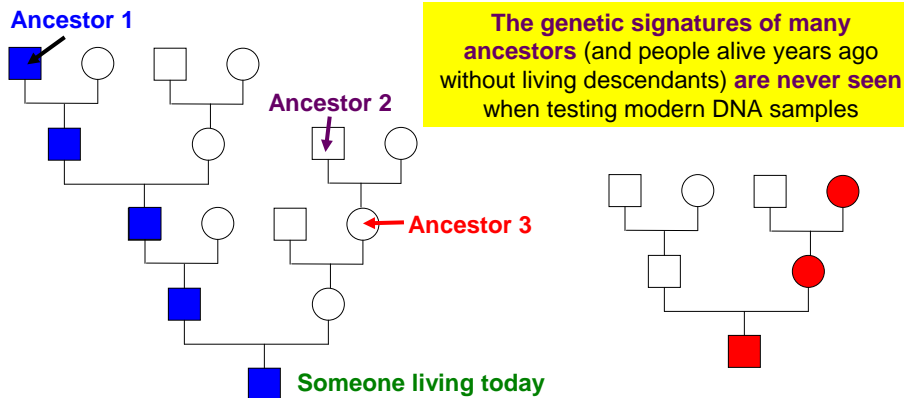
<http://www.manastungare.com/publications/genetic/dna.gif>

## Future Predictions

- More Automation
- Expert Systems
- Animal & Plant DNA
- Portable Devices
- Estimation of Physical Characteristics and Sample Ethnicity



## Ancestry DNA Tests (Using Lineage Markers)



**Y-Chromosome Tests**, which examine genetic traits passed on from **father to son**, provide only a partial picture of the past **paternal lineage**

**Mitochondrial DNA (mtDNA) Tests**, which examine genetic traits passed on from **mother to children**, provide only a partial picture of the past **maternal lineage**