



APPALACHIAN REGIONAL COMMISSION

•
GhUhi g'cZH Y'5 ddU'UW]Ub'
@cWU'5 WYgg'F cUX'Dfc[fUa

5g'cZGYdhYa VYf' \$ž&\$%&

GYdhYa VYf'&\$%&

GENERAL REPORT

Appalachian Local Access Road (LAR) Program

Purpose of the LAR Program

In 1964, the President's Appalachian Regional Commission (PARC) reported to Congress that economic growth in Appalachia would not be possible until the Region's isolation had been overcome. The nation's Interstate Highway System had largely bypassed the Appalachian Region, going through or around the Region's rugged terrain as cost effectively as possible.

The PARC report recommended, and Congress authorized, construction of the Appalachian Development Highway System (ADHS) in the Appalachian Development Act of 1965. The ADHS was designed to generate economic development in previously isolated areas, supplement the interstate system, connect Appalachia to the interstate system, and provide access to areas within the Region as well as to markets in the rest of the nation.

As part of the ADHS program and its federal funding authority, Congress authorized a portion of the ADHS funds to be allowed for use on local access roads. This use would be at the discretion of the member states of the Appalachian Regional Commission (ARC). It provides a flexible approach to meet local needs with a financing mechanism to support a variety of economic development opportunities throughout the Region.

Funding for the LAR Program

Section 9.5 of the ARC Code provides state governors the option of using up to \$500,000 plus 5 percent of their annual ADHS apportionment, but no more than \$1,000,000 each year, for local access road projects within the Appalachian Region. The ADHS funds apportioned to states in accordance with Section 1116 of SAFETEA-LU are subject to an obligational ceiling. SAFETEA-LU ADHS funds made available for local access road projects are a sub-funding program code within the ADHS program code in the Fiscal Management Information System (FMIS) under the Federal Highway Administration (FHWA).

As part of the Federal-Aid Highway Program, the LAR is a reimbursable program. Project recipients receive reimbursement only for the federal share of the cost actually incurred.

Section 1116 of SAFETEA-LU states that “funds shall be available to construct highways and access roads under section 201 of the Appalachian Regional Development Act of 1965 (ARDA).” Section 226(c)(2) of ARDA prohibits funding local access road projects in counties that have been designated *attainment counties* by ARC. Section 226(c)(1) of ARDA restricts the maximum federal participation to 30 percent in counties designated as *competitive counties*. The maximum federal participation on local access road projects in other ARC counties is 80 percent.

In addition to ADHS funds, a state may also choose to fund a local access road project with ARDA Section 214 Area Development (non-highway) funds and have the state DOT and the FHWA administer the local access road project.

Benefits of the LAR Program

Assessment studies of the LAR Program were undertaken as part of program evaluation for ARC infrastructure and public works projects.

An evaluation study conducted by the Brandow Company and Economic Development Research Group was completed in 2000. This study focused on key performance measurements and outcomes from 15 completed local access road projects. The study concluded that the local access road projects performed well and met or exceeded aggregate performance projections. New businesses were served at a rate more than four times projected while both new and retained jobs assisted by the projects came in far above projections. In addition, the study also concluded that ARC investments in access road projects paid off with very significant leveraging rates not attained by other development classifications.

A more recent evaluation study published in 2007, also conducted by the Brandow Company and Economic Development Research Group, confirmed the above study results though with a smaller sample size of only three local access road projects. The study concluded that the local access road projects performed well in the businesses-served categories as well as in new jobs created. ARC investments in local access road projects paid off with significant leveraging rates.

Status of LAR Projects

At the end of FY 2011, a total of 974.2 miles, or 69.6 percent of the 1,400 miles of local access roads authorized under ARDA, were approved by ARC. Since FY 1999, when TEA-21 LAR funds were first authorized, 177 local access road projects have been approved by ARC using TEA-21/SAFETEA-LU funds, and a total of \$57,577,757 TEA-21/SAFETEA-LU funds have been allocated to ARC local access road projects.

Summary of FY 2011 LAR Program Accomplishments

Obligation of Funds

During FY 2011, the states obligated a total of \$1,557,141 in federal funds for ARC local access road projects. This included \$140,638 in TEA-21 funds, \$15,238 de-obligated from the Surface Transportation Extension Acts of TEA-21, \$1,081,741 from SAFETEA-LU funds and \$350,000 from the Surface Transportation Extension Acts of SAFETEA-LU.

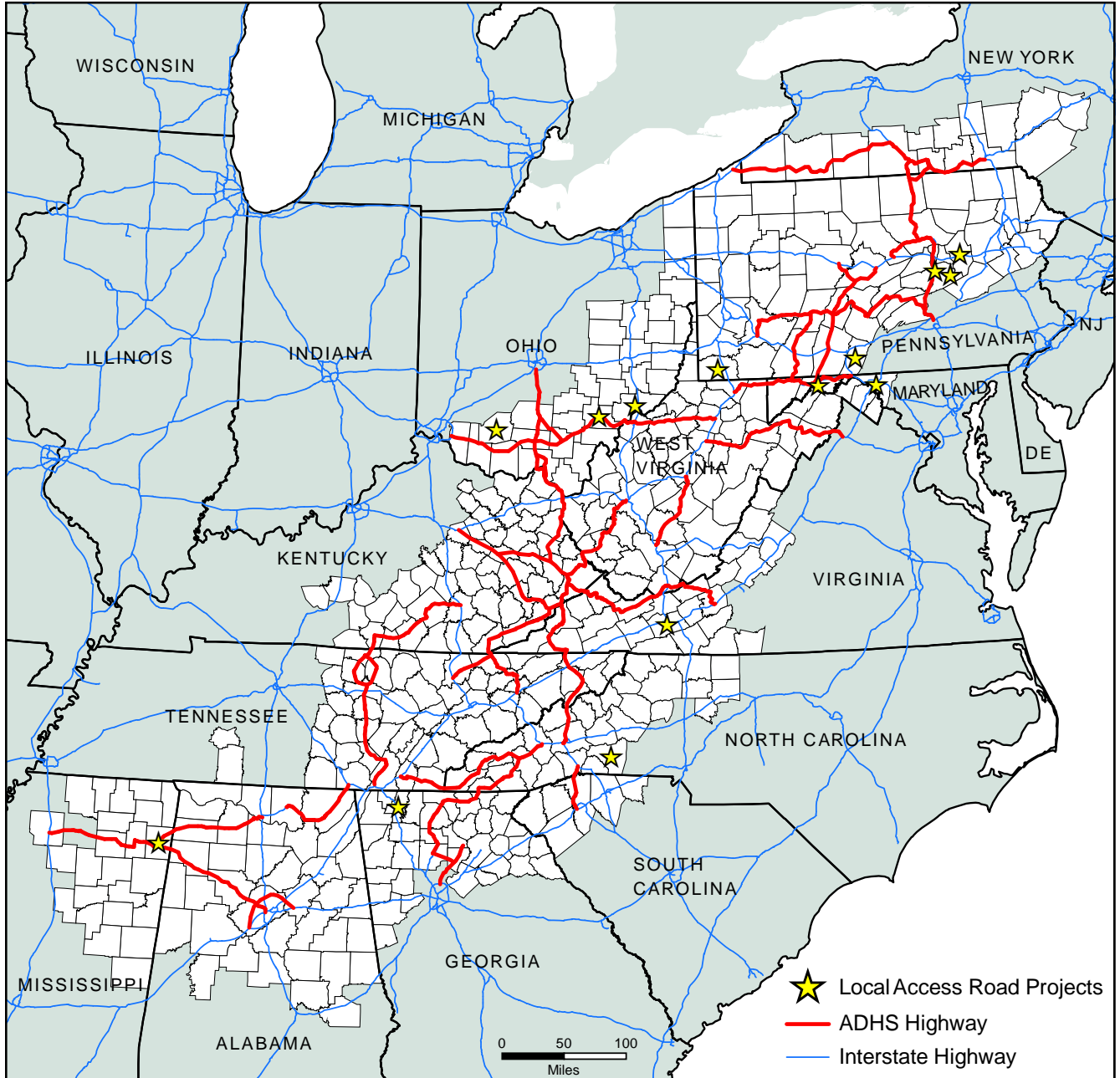
Projects Approved

In FY 2011, ARC approved 14 local access road projects totaling \$5,750,000 for funding with SAFETEA-LU or TEA-21 funds. The projects included a total of approximately 2.67 miles to be constructed or improved.

The approved projects are in following states:

- Georgia: One project in Whitfield County.
- Maryland: One project in Washington County and one in Allegany County.
- Mississippi: One project in Itawamba County.
- North Carolina: One project in Rutherford County.
- Ohio: One project in Athens County, one in Washington County, and one in Highland County.
- Pennsylvania: One project in Columbia County, two in Northumberland County, one in Fulton County, and one in Greene County.
- Virginia: One project in Wythe County.

Figure 1. Local Access Road Projects in Appalachia, FY 2011



Note: The county's geographic center serves as a proxy for the project's location.

LOCAL ACCESS ROAD PROGRAM IN GEORGIA

Local Access Road (LAR) Projects in Georgia

As of September 30, 2011

Project Approval Summary for FY 2011

Total Number of Approved Projects:	1
Total Estimated Miles:	0.91 miles
Total Approved TEA-21/SAFETEA-LU Funds:	\$1,000,000
Total TEA-21/SAFETEA-LU Federal Funds Obligations to Date:	\$11,447

Fiscal Year 2011 Obligations

During fiscal year 2011, Georgia de-obligated \$22,953 in TEA-21 funding for the LAR Program.

LAR Projects Approved in FY 2011

- Carbondale Business Park Access Road (Whitfield County)

LAR Projects Underway in Georgia in FY 2011 (*TEA-21 and/or SAFETEA-LU Funds*)

- Jackson County Industrial Park Local Access Road—Revision for Supplemental Funds (Jackson County)
- Braselton Industrial Parkway Extension, Phase I (Jackson County)
- Gateway II Industrial Park Access Road (Hart County)
- Hall County Calvary Church Road Improvements (Hall County)
- Cedartown Industrial Park Access Road (Polk County)
- Georgia West Business Park Access Road Improvements (Haralson County)
- Paulding County Technology Park Access Road (Paulding County)
- Jackson County Industrial Park Local Access Road (Jackson County)

Jackson County Industrial Park Access Road, GA—Road to Be Improved



Paulding County Technology Park Access Road, GA



LOCAL ACCESS ROAD PROGRAM IN MARYLAND

Local Access Road (LAR) Projects in Maryland

As of September 30, 2011

Project Approval Summary for FY 2011

Total Number of Approved Projects:	2
Total Estimated Miles:	0.87 miles
Total Approved TEA-21/SAFETEA-LU Funds:	\$1,000,000
Total TEA-21/SAFETEA-LU Federal Funds Obligations to Date:	\$7,952,010

Fiscal Year 2011 Obligations

During fiscal year 2011, Maryland obligated \$863,591 in federal funds for LAR projects. This included \$163,591 from TEA-21 funds, \$500,000 from SAFETEA-LU funds and \$200,000 from the Surface Transportation Extension Acts of SAFETEA-LU.

LAR Projects Approved in FY 2011

- Yale Drive Access Road, Phase I (Washington County)
- Braddock Road Access Road Improvements, Phase II (Allegany County)

LAR Projects Underway in Maryland (*TEA-21 and/or SAFETEA-LU Funds*)

- Cherry Glade Commercial Access Road (Garrett County)
- Allegany College of Maryland Entrance Road—Revision for Supplemental Funds (Allegany County)
- Cherry Glade Commercial Access Road, Phase II (Garrett County)
- Braddock Access Road Improvements (Allegany County)
- Allegany College of Maryland Entrance Road (Allegany County)
- Rolling Mill Access Road Improvements, Phase II (Allegany County)
- Rolling Mill Access Road Improvements, Phase III (Allegany County)
- Broadway Access Road (Allegany County)
- Hershberger Avenue Extension (Garrett County)
- McHenry Business Park Access Road (Garrett County)
- Virginia Avenue Corridor Improvements (Allegany County)
- Glendale Local Access Road (Garrett County)

LOCAL ACCESS ROAD PROGRAM IN MISSISSIPPI

Local Access Road (LAR) Projects in Mississippi As of September 30, 2011

Project Approval Summary for FY 2011

Total Number of Approved Projects:	1
Total Estimated Miles:	0.05 mile
Total Approved TEA-21/SAFETEA-LU Funds:	\$250,000
Total TEA-21/SAFETEA-LU Federal Funds Obligations to Date:	\$5,872,672

Fiscal Year 2011 Obligations

During fiscal year 2011, Mississippi obligated \$262,446 in federal funds for LAR projects. This included \$15,238 de-obligated from the Surface Transportation Extension Acts of TEA-21, \$127,684 from SAFETEA-LU funds and \$150,000 from the Surface Transportation Extension Acts of SAFETEA-LU.

LAR Projects Approved in FY 2011

- Itawamba County Access Road Improvements (Itawamba County)

LAR Projects Underway in Mississippi in FY 2011 (*TEA-21 and/or SAFETEA-LU Funds*)

- Chickasaw Trail Industrial Park Access Road Improvements—Revision for Supplemental Funds (Marshall County)
- Chickasaw County Jail Access Road (Chickasaw County)
- Chickasaw County Access Road Improvements (Chickasaw County)
- Artesia Access Road (Lowndes County)
- Lee County MTD Industrial Access Road (Lee County)
- Chickasaw Trail Industrial Park Road Improvements (Marshall County)
- Pontotoc Access Road (Pontotoc County)
- Alcorn County/Kimberly Clark Access Road Improvements (Alcorn County)
- Webster County Access Road (Webster County)

- Strawberry Plains Audubon Center Access Road Improvements (Marshall County)
- Forefront Industrial Access Road (Prentiss County)
- West Point Airport Road (Clay County)
- Lowndes County Access Road Improvements – Raymond Road (Lowndes County)
- Tippah County Access Road Improvements (Tippah County)
- Webster County Access Road – Add-On (Webster County)

Forefront Industrial Access Road, Prentiss County—to Be Improved



Manufacturers Drive Industrial Access Road, Lowndes County



LOCAL ACCESS ROAD PROGRAM IN NORTH CAROLINA

Local Access Road (LAR) Projects in North Carolina *As of September 30, 2011*

Project Approval Summary for FY 2011

Total Number of Approved Projects:	1
Total Estimated Miles:	0.47 mile
Total Approved TEA-21/SAFETEA-LU Funds:	\$1,000,000
Total TEA-21/SAFETEA-LU Federal Funds Obligations to Date:	\$0

Fiscal Year 2011 Obligations

During fiscal year 2011, North Carolina did not obligate federal funds for LAR projects.

LAR Projects Approved in FY 2011

- Rutherford County Access Road (Rutherford County)

LAR Projects Underway in North Carolina in FY 2012 (*TEA-21 and/or SAFETEA-LU Funds*)

- Mount Airy-Surry County Airport Access Road (Surry County)
- North Wilkesboro Industrial Park Access Road (Wilkes County)

LOCAL ACCESS ROAD PROGRAM IN OHIO

Local Access Road (LAR) Projects in Ohio

As of September 30, 2011

Project Approval Summary for FY 2011

Total Number of Approved Projects:	3
Total Estimated Miles:	0.66 miles
Total Approved TEA-21/SAFETEA-LU Funds:	\$1,000,000
Total TEA-21/SAFETEA-LU Federal Funds Obligations to Date:	\$6,713,021

Fiscal Year 2011 Obligations

During fiscal year 2011, Ohio did not obligate TEA-21/SAFETEA-LU funds for LAR projects.

LAR Projects Approved in FY 2011

- Nelsonville ACEnet Access Road (Athens County)
- Belpre Farson Street Improvements (Washington County)
- Herbart/Smith Drive Access Road Revision (Highland County)

LAR Projects Underway in Ohio in FY 2011 (*TEA-21 and/or SAFETEA-LU Funds*)

- Athens Circle Drive Access Road (Athens County)
- GH Drive Access Road Extension (Ashtabula County)
- CR 9 and US 35 Access Road Improvements (Jackson County)
- South 2nd Street Roadway Improvements (Coshocton County)
- Gallia County SR 850 Access Road (Gallia County)
- Farm Road Alternative Access Road, Phase II (Gallia County)
- Hayport Road Access Road Improvement and Bridge Replacement (Scioto County)
- Old SR74/College Drive Access Road Extension (Clermont County)
- Hobart Drive Access Road Planning (Highland County)
- Bellaire SR 149 Relocation Project (Belmont)
- Athens Holzer Clinic Development Access Road (Athens County)

**Adams County, Ohio, Hospital Access Road Project
(Completed May 2009)**



LOCAL ACCESS ROAD PROGRAM IN PENNSYLVANIA

Local Access Road (LAR) Projects in Pennsylvania As of September 30, 2011

Project Approval Summary for FY 2011

Total Number of Approved Projects:	5
Total Estimated Miles:	1.18 miles
Total Approved TEA-21/SAFETEA-LU Funds:	\$1,000,000
Total TEA-21/SAFETEA-LU Federal Funds Obligations to Date:	\$8,111,272

Fiscal Year 2011 Obligations

During fiscal year 2011, Pennsylvania obligated \$454,057 in SAFETEA-LU funds for LAR projects.

LAR Projects Approved in FY 2011

- BIDA Complex Access Road (Columbia County)
- SEEDCO Access Road (Northumberland County)
- Anthracite Outdoor Adventure Area Access Road (Northumberland County)
- PA Route 16 Access Road Improvements Add-On (Fulton County)
- Murtha Drive Extension Access Road (Greene County)

LAR Projects Underway in Pennsylvania in FY 2011 (TEA-21 and/or SAFETEA LU Funds)

- East Buffalo Access Road Improvements (Union County)
- Lackawanna River Basin Access Road (Lackawanna County)
- Greene County Airport Access Road (Greene County)
- Penn House Commons Access Road (Union County)
- Starpointe Business Park Access Road, Phase 1B (Washington County)
- Carbondale Yards Roadway Improvements (Lackawanna County)
- MIDA Business Park Access Road (Washington County)
- Lafferty Hollow Industrial Park Access Road (McKean County)
- Bedford County Business Park II Access Road (Bedford County)
- Washington County Airport Northside Access Road (Washington County)

- Valley Business Park Access Road (Bradford County)
- Clearfield Firemen Industrial Park Access Road (Clearfield County)
- Johnstown Industrial Park Access Road (Cambria County)
- Joseph Land Development Access Road (Indiana County)
- DuBois Medical Center West Access Road (Clearfield County)
- Mifflin County Industrial Park East Access Road (Mifflin County)
- Great Stream Commons Access Road, Phase II (Union County)
- Meadow Ridge Business Park Access Road (Greene County)
- Oliver Road Improvements (Susquehanna County)
- Lafferty Hollow Industrial Park Access Road Supplemental (McKean County)
- Indiana Regional Medical Center Access Road (Indiana County)
- PA Route 16 Access Road Improvements (Fulton County)
- Clearfield Firemen Industrial Park Access Road—Add On (Clearfield County)
- Dubois Medical Center West Access Road—Add On (Clearfield County)
- Jimmy Steward Airport Access Road (Indiana County)

Clearfield Firemen Industrial Park Access Road—Road Dedication Ceremony



Williamsport West End Industrial Park Access Road—Phase II



LOCAL ACCESS ROAD PROGRAM IN VIRGINIA

Local Access Road (LAR) Projects in Virginia

As of September 30, 2011

Project Approval Summary for FY 2011

Total Number of Approved Projects:	1
Total Estimated Miles:	0.40 miles
Total Approved TEA-21/SAFETEA-LU Funds:	\$500,000
Total TEA-21/SAFETEA-LU Federal Funds Obligations to Date:	\$1,231,197

Fiscal Year 2011 Obligations

During fiscal year 2011, Virginia did not obligate TEA-21/SAFETEA-LU funds for LAR projects.

LAR Projects Approved in FY 2011

- Progress Park Access Road Extension (Wythe County)

LAR Projects Underway in Virginia (*TEA-21 and/or SAFETEA-LU Funds*)

- Garden Side Village Access Road (Russell County)
- Lover's Gap Industrial Site Access Road (Buchanan County)
- East Alleghany County Route 727 Bridge Improvements (Alleghany County)
- Duffield Regional Technology Center Access Road (Scott County)

East Alleghany County, Virginia, Route 727 Bridge Replacement



TABLE 1

**APPALACHIAN LOCAL ACCESS ROAD PROJECTS
APPROVED MILES (USING ADHS FUNDS)
CUMULATIVE TOTALS
As of September 30, 2011**

State	Length in Miles
Alabama	196.72
Georgia	45.52
Kentucky	12.63
Maryland	19.47
Mississippi	224.89
New York	9.78
North Carolina	28.08
Ohio	71.51
Pennsylvania	137.92
South Carolina	101.60
Tennessee	59.36
Virginia	34.85
West Virginia	31.84
Total	974.17

Note: The maximum number of local access road miles that may be approved by ARC is 1,400 miles. [ARDA Title II Part A, Section 201(a)]

TABLE 2

**APPALACHIAN LOCAL ACCESS ROAD (LAR)
FY 2011 MAXIMUM AMOUNT OF ADHS FUNDS
THAT MAY BE USED FOR LOCAL ACCESS ROAD PROJECTS**

State	Maximum Amount Not to Exceed \$1,000,000
Alabama	\$1,000,000
Georgia	\$1,000,000
Kentucky	\$1,000,000
Maryland	\$1,000,000
Mississippi	\$792,606
New York	\$1,000,000
North Carolina	\$1,000,000
Ohio	\$1,000,000
Pennsylvania	\$1,000,000
South Carolina	\$890,225
Tennessee	\$1,000,000
Virginia	\$1,000,000
West Virginia	\$1,000,000
Total	\$12,682,831

Note: The numbers are based on available ADHS apportionment information from FHWA.