



**Draft
Parcel E-2
Record of Decision**

Hunters Point Naval Shipyard

**COMMUNITY MEETING
April 11, 2012**



Welcome and Introductions



Navy Team Members

Keith Forman

BRAC Environmental Coordinator
Hunters Point Naval Shipyard

Melanie Kito

BRAC Lead Remedial Project Manager
Hunters Point Naval Shipyard

Lara Urizar

BRAC Remedial Project Manager
Hunters Point Naval Shipyard

Matt Robinson

Community Involvement Manager
Hunters Point Naval Shipyard

Regulatory Agency Team Members

Craig Cooper

Project Manager
US Environmental Protection Agency

Ryan Miya

Project Manager
CA Dept. of Toxic Substances Control

Ross Steenson

Project Manager
Regional Water Quality Control Board

Tina Low

Project Manager
Regional Water Quality Control Board



Welcome and Introductions



Meeting Agenda

Time	Topic
6:00 – 6:05	Welcome & Introductions
6:05 – 6:10	Meeting Format & Ground Rules
6:10 – 6:40	Draft Parcel E-2 ROD Presentation
6:40 – 7:00	Regulator Perspective
7:00 – 8:00	Questions & Answers



Meeting Format & Ground Rules



- The general presentation will take about 30 minutes.
- Please hold your questions during the presentation; you will have an opportunity to ask questions at the end of the presentation.
- The balance of the meeting is dedicated to answering questions presented by the audience.
- Meeting materials are available to provide more detailed information:
 - Frequently Asked Questions About the Shipyard Landfill
 - Summary of Responses to Community Comments on Parcel E-2 Proposed Plan
 - HPNS Quarterly Update (Spring 2012)
 - HPNS 2012 Annual Fact Sheet



Purpose of Tonight's Meeting



- Provide brief background on Parcel E-2
- Provide an overview of the Navy's selected up action for Parcel E-2
- Summarize Navy response to community input on the Parcel E-2 Proposed Plan
- Answer questions on the Parcel E-2 cleanup plan

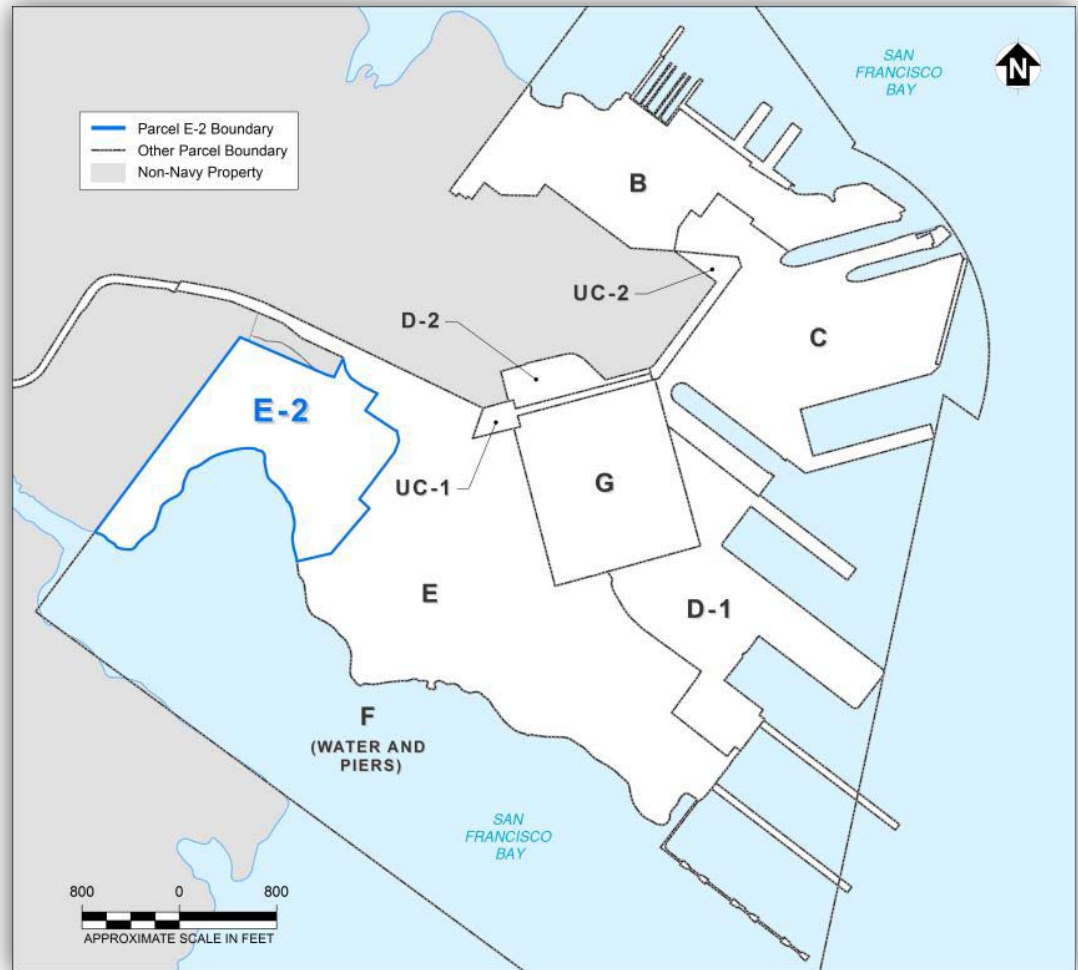


Location of Parcel E-2

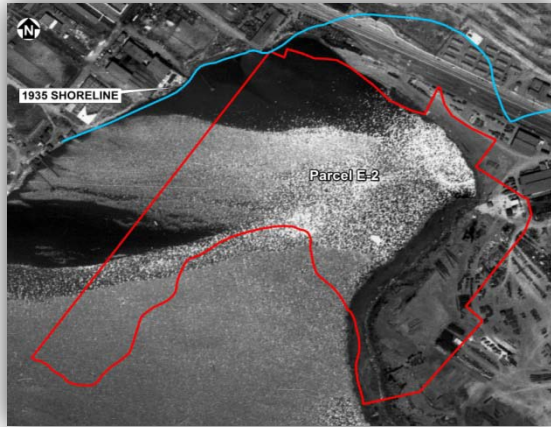


Parcel E-2

- Located in the southwest part of Hunters Point Naval Shipyard
- Includes about 48 acres of shoreline and lowland coastal area



Filling at Parcel E-2



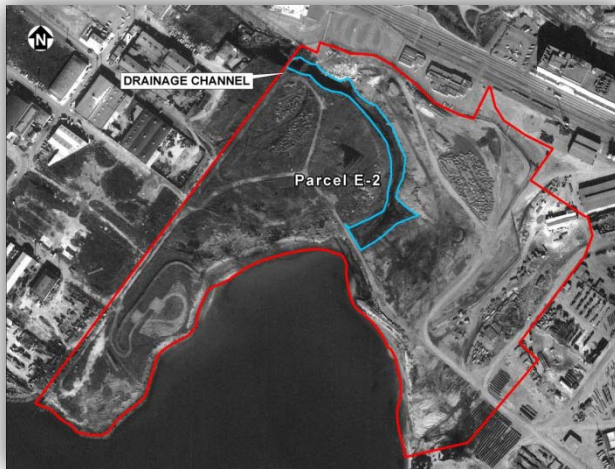
1946



1955



1965

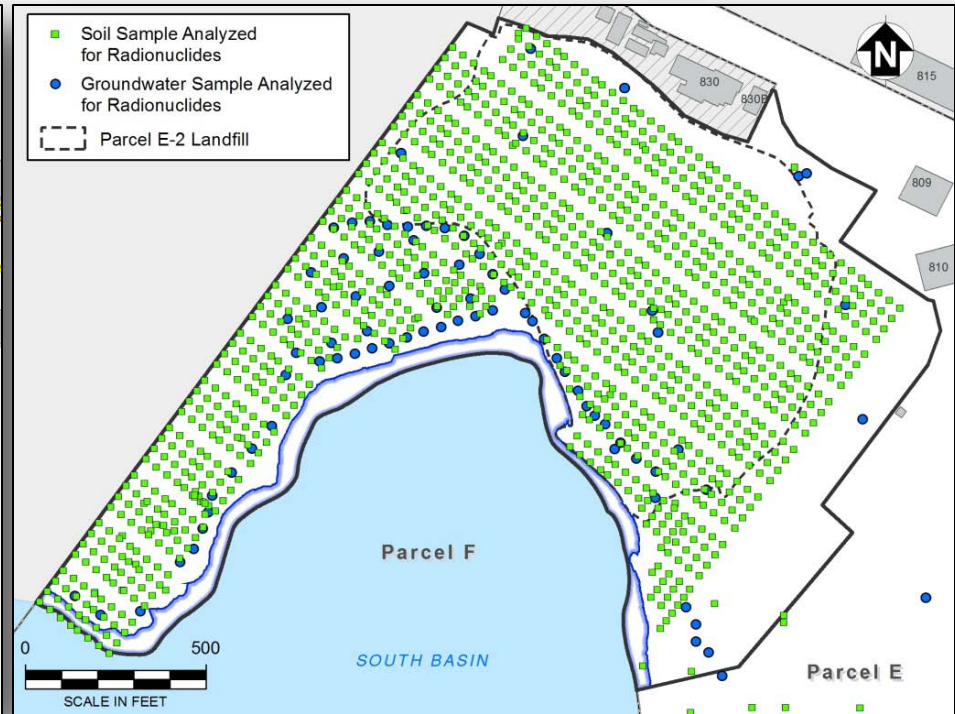
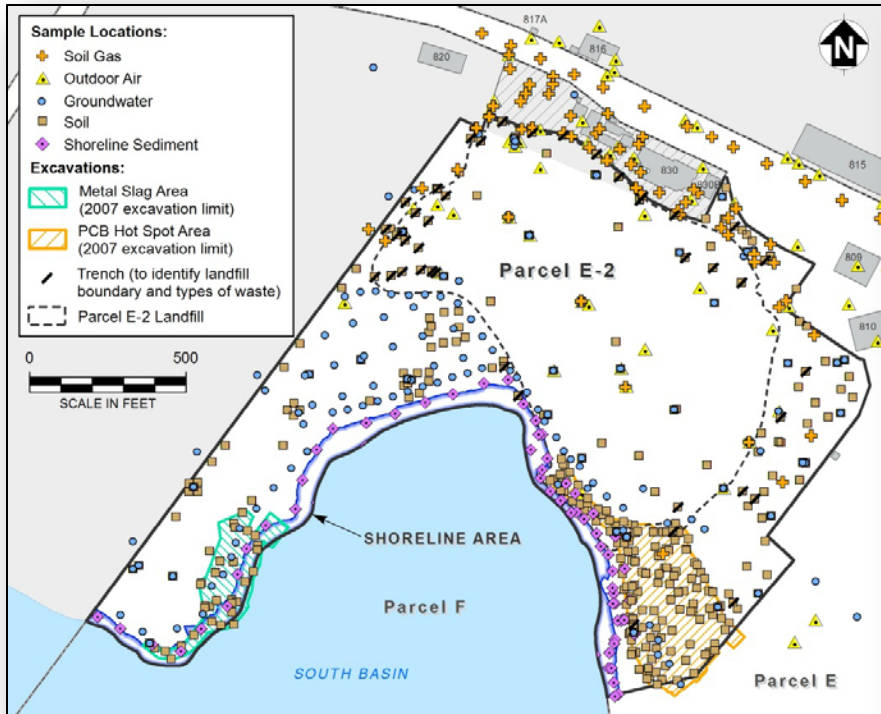


1969



1974

Previous Investigations



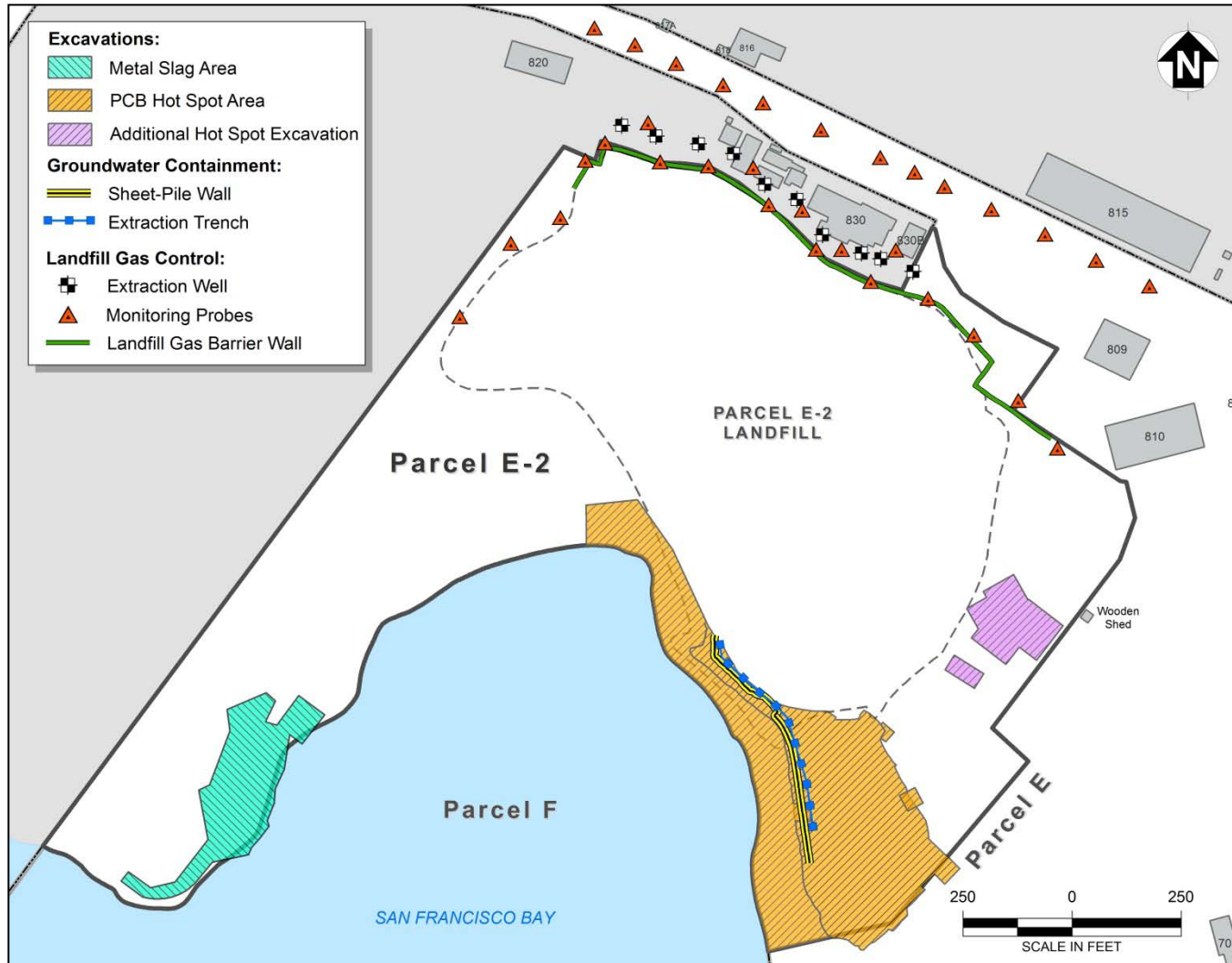
Parcel E-2 Landfill

- **Filled with a variety of shipyard-related wastes**
 - Construction debris (wood, steel, concrete, soil)
 - Municipal trash (paper, plastic, glass, metal)
 - Industrial waste (sandblast waste, low-level radioactive material, paint sludge, solvents, waste oils)





Early Cleanup Actions

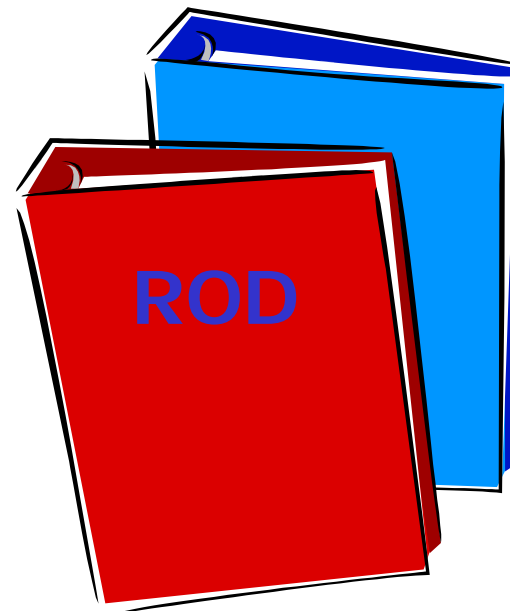




Parcel E-2 Record of Decision



- Document that identifies the final selected cleanup action for Parcel E-2
 - Responds to input received from the Public on the Proposed Plan





Selected Remedy



- Excavate and dispose of remaining soil hot spot areas
- Install protective liner and soil cover over landfill and surrounding areas
- Install underground barriers (slurry walls) to limit contaminated groundwater flow to the Bay
- Remove and treat landfill gas
- Build a shoreline revetment (rock wall)
- Build new wetlands
- Maintain the remedy and conduct the following monitoring:
 - landfill gas sampling, groundwater sampling, stormwater sampling, soil settlement testing, inspection of the landfill liner and revetment wall, post-earthquake monitoring



Key Public Comments on Proposed Plan



- Proposed Plan Public Comment Period was from September 7 through November 21, 2011
- Navy received 70 comments from a mixture of 18 individuals, groups and agencies
- Six important themes arise in the comments
- Navy and Regulators carefully considered all comments



Six Primary Themes in Community Comments



1. Are there sufficient data about the Parcel E-2 Landfill to select the remedy?
2. Why was containment in place selected for the Parcel E-2 landfill instead of complete excavation?
3. How was Environmental Justice considered in the process of selecting the remedy?
4. How is containment in place consistent with Proposition P?
5. How will the Navy involve the community during the design of the selected remedy?
6. How will the selected remedy protect people and wildlife in the long-term?



Key Public Comments to Proposed Plan

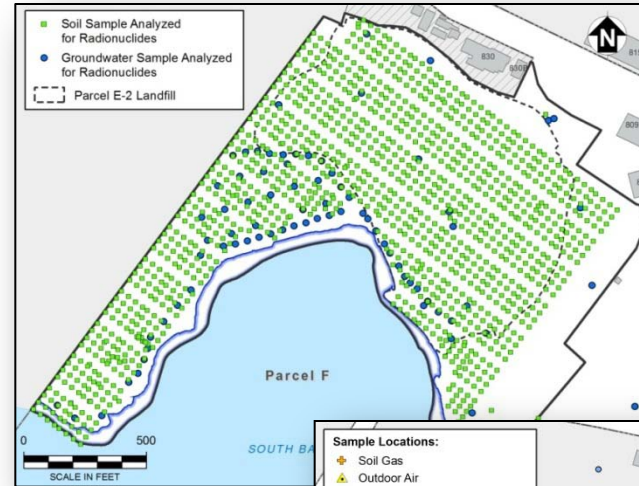


1. Are there sufficient data about the Parcel E-2 Landfill to select a remedy?

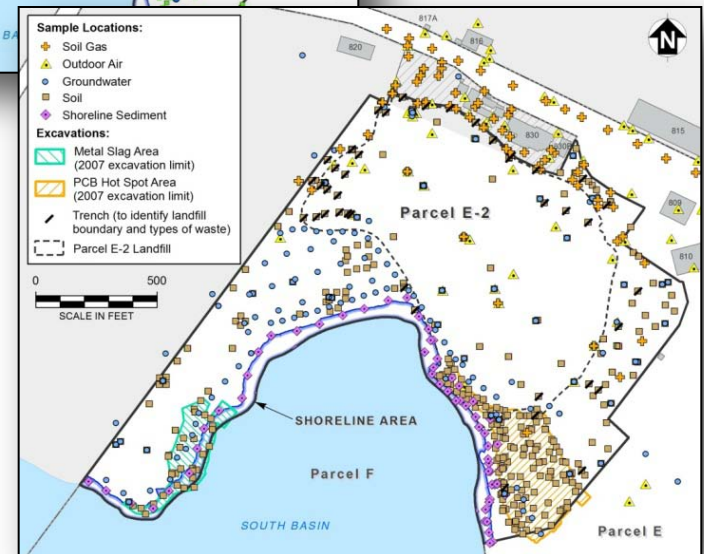
- Navy (with close regulatory oversight) has been studying the landfill for more than 20 years
- Extensive investigation of extent of contamination
 - Dozens of soil borings, monitoring wells, investigation trenches, and 100's of landfill gas, air, and rad samples
- Data from these investigations have provided the Navy a clear picture of what's going on in the landfill
 - Observations from various trenches and excavations show that the landfill contains mostly construction debris
 - Groundwater contamination does not pose a major threat to the San Francisco Bay
 - Landfill gas monitoring has shown that the landfill is generating relatively small amounts of landfill gas and methane



Photo of trench in landfill



Figures showing extensive sampling





Public Comments to Proposed Plan



2. Why was containment in place selected for the Parcel E-2 landfill instead of complete excavation?

- Landfill can be safely contained using proven technology
- No new exposure problems are created by safely containing it in place
- Closure in place is consistent with EPA national policy for large landfills
 - Parcel E-2 landfill is similar to hundreds of other landfills across the country that have also been safely closed in place under EPA policy



Public Comments to Proposed Plan



2. Why is the landfill being contained in place instead of excavated? *(continued)*

- Parcel E-2 landfill meets EPA national policy for containment of large landfills for the following reasons:

1. Landfill greater than 2 acres



2. Landfill contents meet municipal-type waste definition



3. No high level rad waste



4. No high-hazard military-type wastes



5. Navy has adequately characterized the landfill



6. Closure in place does not affect future land use (open space)



7. Excavation is not practical and potentially creates NEW hazards



8. EPA Policy says professionally manage the landfill in place!





Public Comments to Proposed Plan



3. How was Environmental Justice (EJ) considered in the process of selecting a remedy?

- Navy and EPA commitment to achieve EJ goals
 - Fully protective cleanup actions
 - Fair and equal treatment of all community members
 - Opportunities for meaningful involvement for community members
- Goals successfully achieved
 - Intense regulatory review and oversight of all Navy cleanup activities
 - Financial commitment from Navy for cleanup
 - EPA Technical Assistance Grants to community
 - Meaningful community engagement outlined in Community Involvement Plan (CIP)
 - Employment of community members
 - Selected fully protective cleanup actions



Public Comments to Proposed Plan



4. How is containment in place consistent with Proposition P?

- Proposition P
 - Cleanup to allow for unrestricted use of property
 - Not relying on protective barriers unless other solutions are not technically feasible
- Navy and EPA considered Proposition P
 - Excavation and off-site disposal of landfill presents many complex challenges and borders on being technically infeasible (and is not cost-effective)
 - Cover and below-ground barriers will protect people and wildlife from remaining contaminants
- Containment of the landfill is consistent with the City's Redevelopment Plan



Public Comments to Proposed Plan



5. How will the Navy involve the community during the design of the selected remedy?

- Navy will develop the Remedial Design (RD) document with input from:
 - Federal and state regulatory agencies
 - Representatives from City of San Francisco
 - People from the local community
- RD will identify how the Navy will properly construct the selected remedy, including:
 - Shoreline protection
 - Landfill gas treatment
 - Protection from effects of sea level rise and earthquakes/liquefaction
 - Performance of long-term maintenance and monitoring of the remedy



Public Comments to Proposed Plan

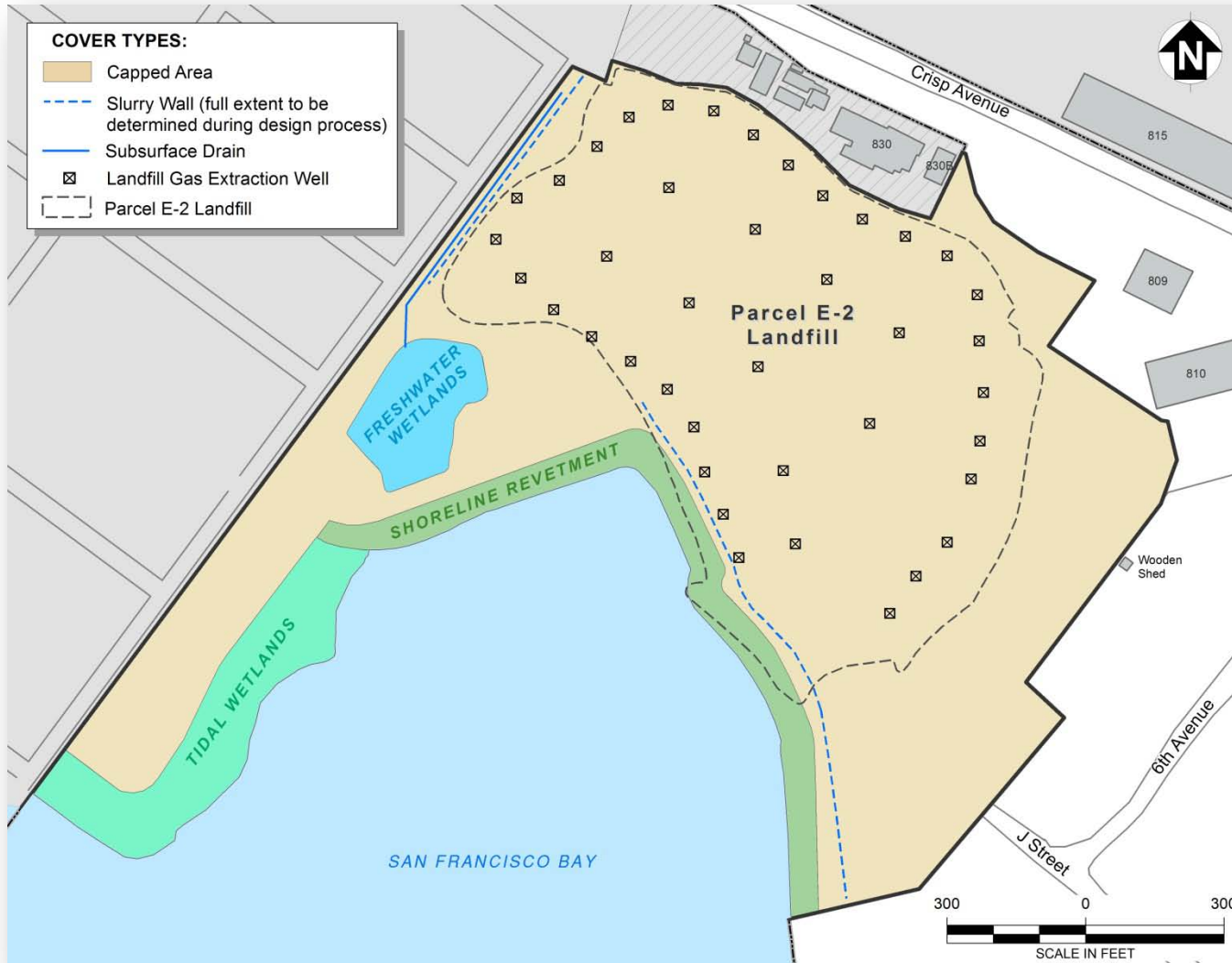


6. How will the selected remedy protect people and wildlife in the long-term?

- Groundwater and landfill gas will be monitored
- Stormwater and erosion controls will be installed and maintained
- Stormwater discharges will be monitored
- Landfill cover will be regularly inspected and maintained
- Routine reports to be provided to Regulators
- Superfund law required comprehensive review of the remedy effectiveness every 5 years



Illustration of Selected Remedy





Selected Remedy



Installation of protective liner with soil cover



Selected Remedy



Tidal Wetlands



Shoreline Revetment



Next Steps



- Draft Parcel E-2 Record of Decision (ROD) Public Comment Period:
 - Begins March 15, 2012
 - Ends April 30, 2012
- Submit ROD
 - Draft final planned for June 2012
 - Final planned for August 2012
- Submit Draft Remedial Design (RD)
 - Planned for Spring 2013



Parcel E-2 Today

Next Steps



Conceptual Plan for Parcel E-2



Additional Information



- Information Repositories contain project-related documents

San Francisco Main Library

Government Information Center, 5th Floor

100 Larkin Street

San Francisco, CA 94102 (415) 557-4500

Hunters Point Naval Shipyard Office Trailer

690 Hudson Street

San Francisco, CA 94124

- The Draft ROD and this presentation can be found on the Internet at **www.bracpmo.navy.mil**



Navy Contact Information



**Department of the Navy
Base Realignment and Closure
(BRAC)**

Program Management Office West
1455 Frazee Road, Suite 900
San Diego, CA 92108

Keith Forman

Hunters Point Naval Shipyard
BRAC Environmental Coordinator
(415) 308-1458

Melanie Kito

Hunters Point Naval Shipyard
BRAC Lead Remedial Project Manager
(619) 532-0787



Regulatory Requirements

- Additional groundwater testing
- Additional soil gas testing
- Additional hot spot removal
- Wetlands restoration
- Strict standards for final covers
- Regular inspections
- Land use controls
- Ongoing regulatory involvement



Regulatory Agency Perspective on the Selected Remedy

- We understand and respect the wide range of opinions in the community
- The Selected Remedy combines removal of hot spots with the safety of containing the large landfill in place
- Digging and transporting large landfills create risks to communities and environment
- The Selected Remedy is the overall safest remedy



Regulatory Teamwork and Oversight of the Navy

- Ensure the Selected Remedy is designed and constructed to regulatory standards
- Review cleanup work at every phase
- Integrate all our technical expertise: Engineers, Geologists, Toxicologists, Biologists, and Project Managers
- Consider public input

Regulatory Contacts



Craig Cooper

United States Environmental Protection Agency
75 Hawthorne Street, San Francisco, CA 94105
(415) 947-4148
cooper.craig@epa.gov



Ross Steenson and Tina Low

San Francisco Bay Regional Water Quality Control
Board 1515 Clay Street, Suite 1400, Oakland, CA 94612
(510) 622-2445/5682
rsteenson@waterboards.ca.gov
tlow@waterboards.ca.gov



Ryan Miya

California Department of Toxic Substances Control
700 Heinz Avenue, Berkeley, CA 94710
(510) 540-3775
rmiya@dtsc.ca.gov



Open Forum



Questions

- Please **raise your hand** if you have a question.
- Please **wait to be recognized** by Matt Robinson before asking your question.
- Please **wait to have the microphone** before asking your question.
- Please **state your name** and if you are associated with a particular interest group.
- Please **be respectful** of fellow community members and presenters while they are speaking.