

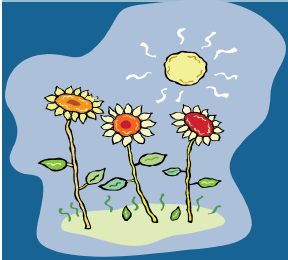


# Osan Middle School Thunderbirds

Providing a Setting of High Expectations  
to Engage and Motivate All Students in a  
Successful Learning Environment

Volume 2, Issue 21

Friday, 8 April 2011



## Parent Connection

### Women's History

Congratulations to Women's History Essay contest winners. Students pictured are from left to right, Hanna Kang, Jordan Nuckols, Elena Pendleton, Nathan Watkins. Also pictured is Ms. Stacy York, Essay contest sponsor (far left). Recognition is also in order for Language Arts teachers Ms. Perry and Ms. Tarbox for supporting their students to victory!



### Blue House

The date of the Blue House trip has been set for 8 June. We have 42 sixth graders and 16 chaperones scheduled to attend this trip which is sure to be interesting and educational.

Contact Ms. Dunham at [christin.dunham@pac.dodea.edu](mailto:christin.dunham@pac.dodea.edu) or 784-7356 if you have questions or concerns.

### Welcome to High School!

**Looking forward to next year!**  
The 8<sup>th</sup> graders recently had an assembly to learn about high school graduation requirements and to choose their classes for next year. They have a copy of their requests to discuss with parents. After spring break the 6<sup>th</sup> graders (Apr 25<sup>th</sup>) and 7<sup>th</sup> graders (Apr 19<sup>th</sup>) will also be selecting their classes for next year and bringing the information home for parents to approve. Changes can be made on the forms students bring home. Once the signed copies are returned to Ms. Votipka or Seminar teachers, we will enter the final elective choices. Feel free to contact Ms. Votipka with any questions (784-7270/1491).

### Pre-QAR

On 19-21 April, OMS will undergo a Pre-Quality Assurance Review visit. The QAR is the school version of an ORI. On these days a team of educators from Korea, led by the district specialist for school improvement, will invest three days evaluating our instructional program.

Stay Connected by regularly visiting our website: [www.osan-ms.pac.dodea.edu/](http://www.osan-ms.pac.dodea.edu/)

Also, if you have not already done so please register on Gradespeed to view your child's grades.

### Calendar of Events

- 8 April: Teacher Work Day-No School
- 11-15 April: Spring Recess
- 21 April: Spelling Bee School Finals
- 22 April: Parent Conferences-No School
- 29 April: Spelling Bee Korea Finals (Seoul)
- 17-19 May: USFK Good Neighbor English Camp
- 23-26 May: Science Fair (See last two pages)
- 27 May: HQ Required Training (10:20 dismissal)
- 3 June: Field Day (Volunteers Needed)
- 8 June: Blue House Trip

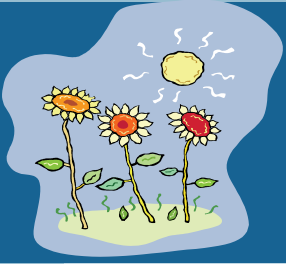


# Osan Middle School Thunderbirds

Providing a Setting of High Expectations  
to Engage and Motivate All Students in a  
Successful Learning Environment

Volume 2, Issue 21

Friday, 8 April 2011



## Parent Connection

### Parent Conferences

Our final conference day for this school year will be Friday, 22 April. We would like to schedule the middle school conferences primarily during the morning hours, that way those parents who have children in the elementary school can attend conferences there in the afternoon. Please call or email [andrea.geer@pac.dodea.edu](mailto:andrea.geer@pac.dodea.edu) if you are interested in scheduling a conference with one or more of your child's teachers.

### Bookmark Contest

April is National School Library Month. In celebration of this, we are having a bookmark design contest. Any OMS student who's interested needs to go by the OMS Information Center (Library) for contest details. The winning bookmark design will be printed for all OMS staff and students and the winner receives a gift certificate. Deadline for turning in the bookmark design to Ms. Dunham is Thursday, April 21, by 3:30 PM.

### 2011-2012 PTSO Officers Needed

If you are interested in serving on our 2011-2012 PTSO Board, please contact our current president Michael Rawlins at:

[michael.rawlins@osan.af.mil](mailto:michael.rawlins@osan.af.mil)

### Osan Good Neighbor English Camp

On 17-19 May, Osan Middle will support USFK's good neighbor program. Our support will entail receiving 23 host-nation 8th graders. **We are in need of sponsor families that can host one or two children for two nights.** Last year families coordinated activities (i.e. bowling) and had a great time. Please call Ms. Geer if interested 784-7256...See next page.

### Nurse's Station

The product below is being recalled. Check your cabinets, if have this product please throw it away immediately. For more information please go to the following website <http://www.tylenol.com/>.

Product Name	Lot Number	UPC Code
TYLENOL® 8 HOUR EXTENDED RELEASE CAPLET 150 count	ADM074	300450297181

## Draft Game Plan: USFK English Camp

**Tuesday, 17 May**

0830-0930

23 Students for English camp arrive at Doolittle gate for check-in, board LRS bus with PA Staff

*Call Ms. Geer at 784-7256 if you are interested in hosting!*

1000-1100

Travel/Arrive at Osan Middle School

Welcome Remarks

Administration briefing (safety rules, itinerary, rules for the program, et cetera)

1100-1130

Match Korean students with American buddies (meet and greet)

1130-1210

Lunch with American buddies in Thunderbird Café

1215-1510

Attend classes with American buddy

1515-1630

Meet American host families

1630

Departure with American host families

**Wednesday, 18 May**

*Call Ms. Geer at 784-7256 if you are interested in hosting!*

0810-0820

Korean students arrive at Osan Middle with American buddy

0830-1510

Attend classes with American buddy

1520

Departure with American buddy (walk if on base; bus if off base)

**Thursday, 19 May**

*Call Ms. Geer at 784-7256 if you are interested in hosting!*

0810-0820

Korean students arrive at Osan Middle with American buddy

0830-1340

Attend classes with American buddy

1400-1500

School-wide celebration/program in Osan Middle Thunderbird Café (w/parents of Korean students)

1500-1545

Reception

1545

Korean students depart for Doolittle gate with Korean family

## Osan Middle School Science Fair Timeline

<p>Week 1 March 21-25</p>	<p>Informed of a school wide mandatory Science Fair Begin thinking of a topic</p>
<p>Week 2 March 28-April 1</p>	<p>Information sent out via students to parents Introduction to Science Fair Distribute information to students Continue thinking of a topic and begin developing a testable question Do some preliminary research</p>
<p>Week 3 April 4-8</p>	<p><b>Signed Parent information letter due</b>  <b>A Day Wednesday, April 6</b>  <b>B Day Thursday, April 7</b>          Firmly decide on a topic          Develop a question and write a hypothesis          Begin background research  <b>Bring in CD for Copy of all Files and Examples.</b></p>
<p>Week 4 April 11-15</p>	<p>Continue background research Determine materials needed and purchase them</p>
<p>Week 5 April 18-22</p>	<p><b>Proposal due</b>  <b>A Day Monday, April 18</b>  <b>B Day Tuesday, April 19</b>          Continue background research if necessary          Computer lab time given at school (85 minutes)          18<sup>th</sup> &amp; 20<sup>th</sup> A Day          19<sup>th</sup> &amp; 21<sup>st</sup> B Day          Purchase materials          Conduct your experiment(s)</p>
<p>Week 6 April 25-29</p>	<p>Conduct your experiment(s)  <b>Research paper due</b>  <b>A Day Tuesday, April 26</b>  <b>B Day Wednesday, April 27</b></p>

<p>Week 7 May 2-6</p>	<p>Prepare project display Computer lab time given at school-IF NEEDED 2<sup>nd</sup> &amp; 4<sup>th</sup> A Day 3<sup>rd</sup> &amp; 5<sup>th</sup> B Day Experiment Details, Materials, Procedures due <b>A Day Wednesday, May 4</b> <b>B Day Tuesday, May 3</b></p> <p><b>Data Notebook due (for review)</b> <b>A Day Wednesday, May 4</b> <b>B Day Tuesday, May 3</b></p>
<p>Week 8 May 9-13</p>	<p>Prepare your exhibit <b>Written Report due (for review)</b> <b>A Day Tuesday, May 10</b> <b>B Day Monday, May 9</b></p>
<p>Week 9 May 16-19</p> <p>May 20</p>	<p>Put the finishing touches on your project for exhibition <b>Turn projects in between Monday, May 16 – Thursday, May 19</b> <b>ALL PROJECTS DUE to your Science Teacher by 3:00 Thursday, May 19</b> <b>Turn in</b> <b>DISPLAY BOARD</b> <b>WRITTEN REPORT</b> <b>DATA NOTEBOOK</b></p> <p>Science Fair Display set up</p>
<p>Week 10 May 23 &amp; 24</p>	<p>Public viewing 3:00-5:00</p>
<p>May 25</p>	<p>Judging</p>
<p>May 26</p>	<p>Award Ceremony during seminar</p>
<p>May 27</p>	<p><b>Yeah everything is OVER!!</b> <b>Great job everyone!!!</b></p>