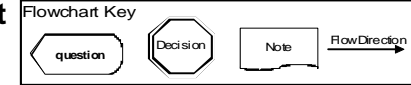


Renal Pelvis, Ureter, Bladder and Other Urinary Multiple Primary Rules - Flowchart

(C659, C669, C670-C679, C680-C689)

(Excludes lymphoma and leukemia M9590-9989 and Kaposi sarcoma M9140)



* Prepare one abstract. Use the histology coding rules to assign the appropriate histology code.

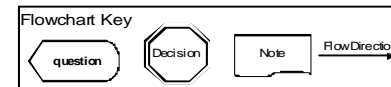
** Prepare two or more abstracts. Use the histology coding rules to assign the appropriate histology code to each case abstracted.

UNKNOWN IF SINGLE OR MULTIPLE TUMORS	DECISION	NOTES
<p>M1</p> <pre> graph TD Q1{{Is it impossible to determine if there is a single tumor or multiple tumors?}} D1{{SINGLE Primary*}} N1[Go to Single Tumor or Multiple Tumors] Q1 -- YES --> D1 Q1 -- NO --> N1 </pre>	<p>End of instructions for Unknown if Single or Multiple Tumors</p>	<p>Tumor(s) not described as metastasis.</p> <p>Use this rule only after all information sources have been exhausted.</p>
SINGLE TUMOR	DECISION	NOTES
<p>M2</p> <pre> graph TD Q2{{Is there a single tumor?}} D2{{SINGLE Primary*}} N2[Go to Multiple Tumors.] Q2 -- YES --> D2 Q2 -- NO --> N2 </pre>	<p>End of instructions for Single Tumor.</p>	<p>1. Tumor not described as metastasis. 2. Includes combinations of in situ and invasive.</p> <p>The tumor may overlap onto or extend into adjacent/contiguous site or subsite.</p>

Renal Pelvis, Ureter, Bladder and Other Urinary Multiple Primary Rules - Flowchart

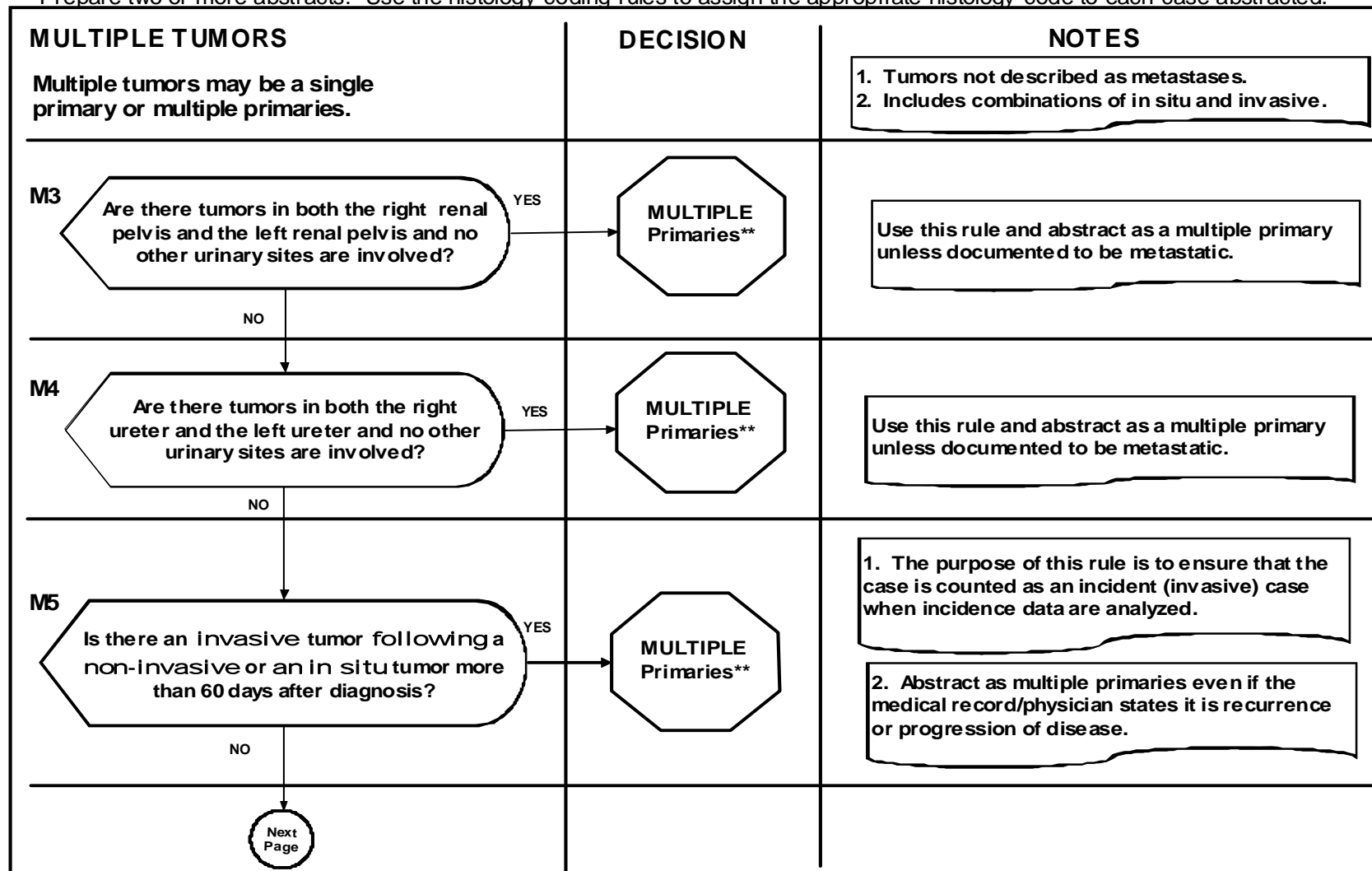
(C659, C669, C670-C679, C680-C689)

(Excludes lymphoma and leukemia M9590-9989 and Kaposi sarcoma M9140)



* Prepare one abstract. Use the histology coding rules to assign the appropriate histology code.

** Prepare two or more abstracts. Use the histology coding rules to assign the appropriate histology code to each case abstracted.



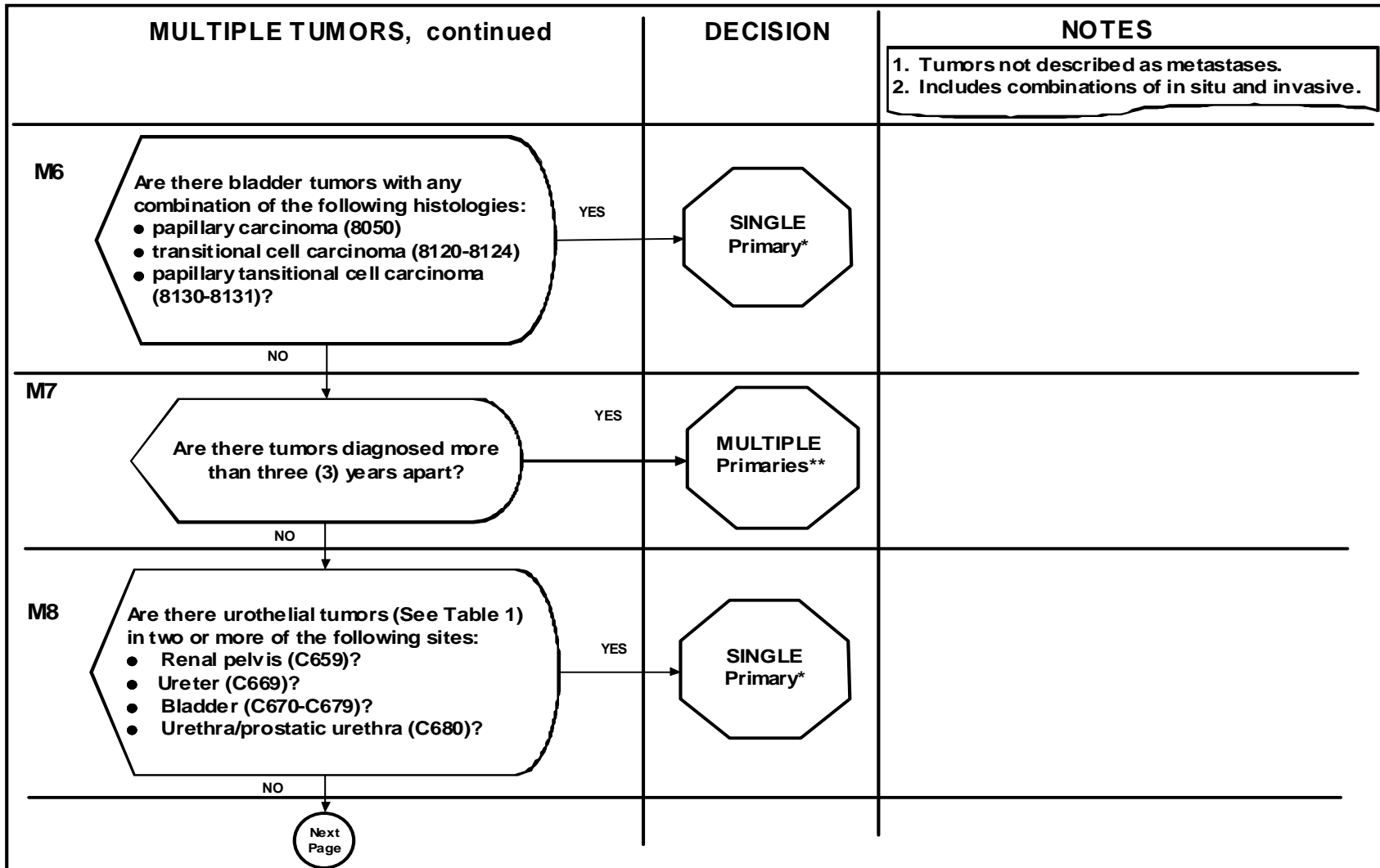
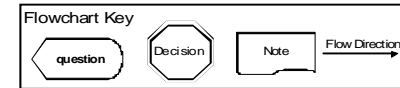
Renal Pelvis, Ureter, Bladder and Other Urinary Multiple Primary Rules - Flowchart

(C659, C669, C670-C679, C680-C689)

(Excludes lymphoma and leukemia M9590-9989 and Kaposi sarcoma M9140)

* Prepare one abstract. Use the histology coding rules to assign the appropriate histology code.

** Prepare two or more abstracts. Use the histology coding rules to assign the appropriate histology code to each case abstracted.



Urinary MP

Renal Pelvis, Ureter, Bladder and Other Urinary Multiple Primary Rules - Flowchart

(C659, C669, C670-C679, C680-C689)

(Excludes lymphoma and leukemia M9590-9989 and Kaposi sarcoma M9140)



* Prepare one abstract. Use the histology coding rules to assign the appropriate histology code.

** Prepare two or more abstracts. Use the histology coding rules to assign the appropriate histology code to each case abstracted.

