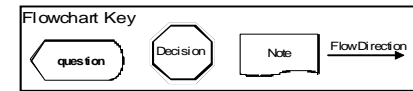


Cutaneous Melanoma Multiple Primary Rules - Flow chart

(C440 - C449 with Histology 8720 - 8780)
 (Excludes melanoma of any other site)

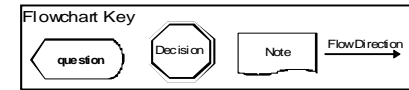


- * Prepare one abstract. Use the histology coding rules to assign the appropriate histology code.
- ** Prepare two or more abstracts. Use the histology coding rules to assign the appropriate histology code to each case abstracted.

UNKNOWN IF SINGLE OR MULTIPLE MELANOMAS	DECISION	NOTES
<p>M1</p>	<p>SINGLE Primary*</p> <p>End of instructions for Unknown if Single or Multiple Melanoma.</p>	<p>Melanoma(s) not described as metastasis.</p> <p>Use this rule only after all information sources have been exhausted.</p>
SINGLE MELANOMA	DECISION	NOTES
<p>M2</p>	<p>SINGLE Primary*</p> <p>End of instructions for Single Melanoma.</p>	<p>1. Melanoma not described as metastasis. 2. Includes combination of in situ and invasive.</p>

Cutaneous Melanoma Multiple Primary Rules - Flowchart

(C440 - C449 with Histology 8720 - 8780)
 (Excludes melanoma of any other site)

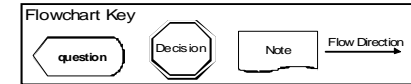


- * Prepare one abstract. Use the histology coding rules to assign the appropriate histology code.
- ** Prepare two or more abstracts. Use the histology coding rules to assign the appropriate histology code to each case abstracted.

MULTIPLE MELANOMAS	DECISION	NOTES
<p>M3 Are there melanomas in sites with ICD-O-3 topography codes that are different at the second (Cxxx), third (Cxxx), and/or fourth character (C44x)?</p>	<p>MULTIPLE Primaries**</p>	<p>1. Melanoma not described as metastases. 2. Includes combinations of in situ and invasive.</p>
<p>M4 Do the melanomas have different lateralities?</p>	<p>MULTIPLE Primaries**</p>	<p>Amidline melanoma is a different laterality than right or left.</p> <p><i>Example 1:</i> Melanoma on the right side of the chest and a melanoma at midline on the chest are different laterality, multiple primaries.</p> <p><i>Example 2:</i> A melanoma on the right side of the chest and a melanoma on the left side of the chest are multiple primaries.</p>
<p>M5 Do the melanomas have ICD-O-3 histology codes that are different at the first (xxxx), second (xxxx), or third (xxxx) number?</p>	<p>MULTIPLE Primaries**</p>	
<p>Next Page</p>		

Cutaneous Melanoma Multiple Primary Rules - Flowchart

(C440 - C449 with Histology 8720 - 8780)
 (Excludes melanoma of any other site)



- * Prepare one abstract. Use the histology coding rules to assign the appropriate histology code.
- ** Prepare two or more abstracts. Use the histology coding rules to assign the appropriate histology code to each case abstracted.

MULTIPLE Melanomas, continued	DECISION	NOTES
<p>M6</p>	<p>YES → MULTIPLE Primaries**</p>	<p>NOTES</p> <p>1. Melanomas not described as metastases. 2. Includes combinations of in situ and invasive.</p> <p>1. The purpose of this rule is to ensure that the case is counted as an incident (invasive) case when incidence data are analyzed. 2. Abstract as multiple primaries even if the medical record/physician states it is recurrence or progression of disease.</p>
<p>M7</p>	<p>YES → MULTIPLE Primaries**</p>	
<p>M8</p> <p>NO → ERROR: Recheck rules. Stop when a match is found.</p>	<p>YES → SINGLE Primary*</p> <p>End of instructions for Multiple Melanomas.</p>	<p>1. Use the data item "Multiplicity Counter" to record the number of melanomas abstracted as a single primary. 2. When an invasive melanoma follows an in situ melanoma within 60 days, abstract as a single primary. 3. All cases covered by this rule are the same site and histology.</p>
<p>Rule M8 Examples: The following are examples of cases that use Rule M8. This is NOT intended to be an exhaustive set of examples; there are other cases that may be classified as a single primary. Warning: Using only these case examples to determine the number of primaries can result in major errors.</p>		
<p>Example 1. Solitary melanoma on the left back and another solitary melanoma on the left chest.</p>	<p>Example 2. Solitary melanoma on the right thigh and another solitary melanoma on the right ankle.</p>	