

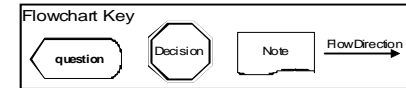
Colon Multiple Primary Rules - Flow chart

(C180-C189)

(Excludes lymphoma and leukemia M9590-9989 and Kaposi sarcoma M9140)

* Prepare one abstract. Use the histology coding rules to assign the appropriate histology code.

** Prepare two or more abstracts. Use the histology coding rules to assign the appropriate histology code to each case abstracted.



UNKNOWN IF SINGLE OR MULTIPLE TUMORS	DECISION	NOTES
<p>M1</p> <pre> graph TD Q1{{Is it impossible to determine if there is a single tumor or multiple tumors?}} D1{{SINGLE Primary*}} N1[Go to Single Tumor or Multiple Tumors] Q1 -- YES --> D1 Q1 -- NO --> N1 </pre>	<p>End of instructions for Unknown Number of Tumors.</p>	<p>Tumor(s) not described as metastasis</p> <p>Use this rule only after all information sources have been exhausted.</p>
SINGLE TUMOR	DECISION	NOTES
<p>M2</p> <pre> graph TD Q2{{Is there a single tumor?}} D2{{SINGLE Primary*}} N2[Go to Multiple Tumors.] Q2 -- YES --> D2 Q2 -- NO --> N2 </pre>	<p>End of instructions for Single Tumor.</p>	<p>1. Tumor not described as metastasis 2. Includes combinations of in situ and invasive.</p> <p>The tumor may overlap onto or extend into adjacent/contiguous site or subsite.</p>

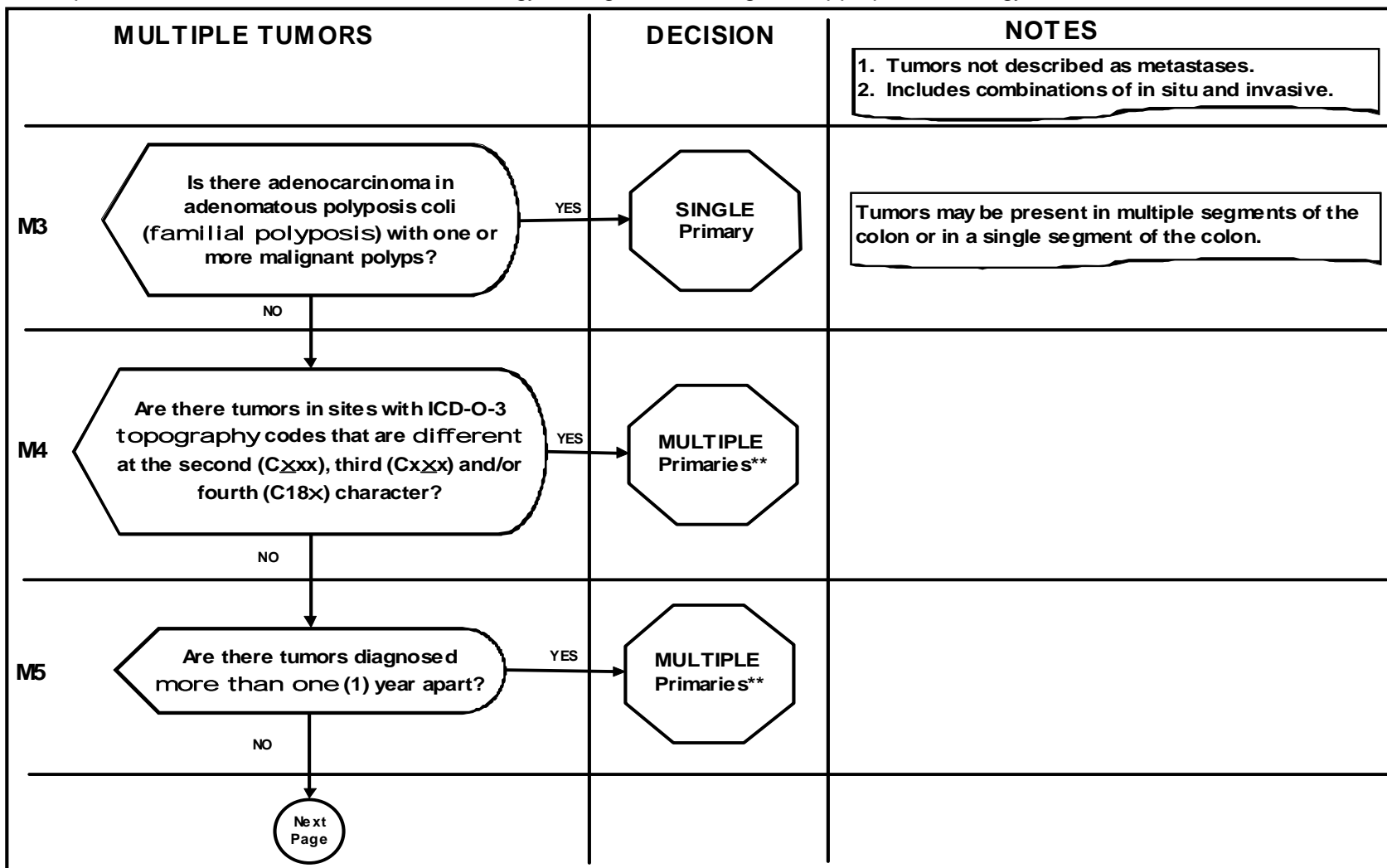
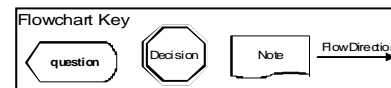
Colon Multiple Primary Rules - Flow chart

(C180-C189)

(Excludes lymphoma and leukemia M9590-9989 and Kaposi sarcoma M9140)

* Prepare one abstract. Use the histology coding rules to assign the appropriate histology code.

** Prepare two or more abstracts. Use the histology coding rules to assign the appropriate histology code to each case abstracted.



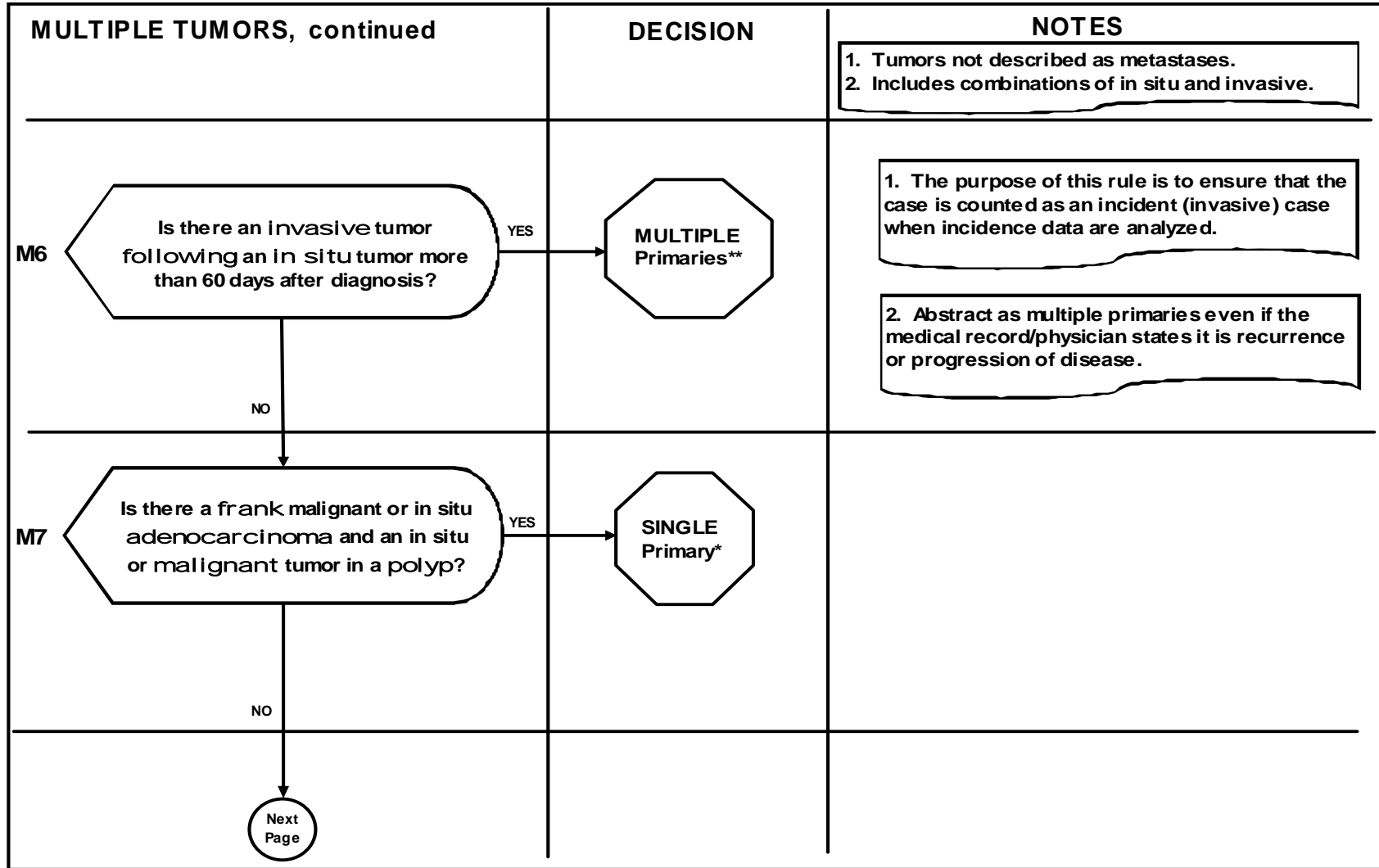
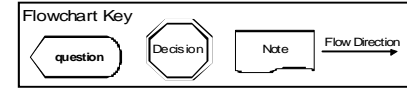
Colon Multiple Primary Rules -Flowchart

(C180-C189)

(Excludes lymphoma and leukemia M9590-9989 and Kaposi sarcoma M9140)

* Prepare one abstract. Use the histology coding rules to assign the appropriate histology code.

** Prepare two or more abstracts. Use the histology coding rules to assign the appropriate histology code to each case abstracted.



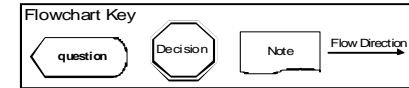
Colon Multiple Primary Rules - Flowchart

(C180-C189)

(Excludes lymphoma and leukemia M9590-9989 and Kaposi sarcoma M9140)

* Prepare one abstract. Use the histology coding rules to assign the appropriate histology code.

** Prepare two or more abstracts. Use the histology coding rules to assign the appropriate histology code to each case abstracted.



MULTIPLE TUMORS, continued	DECISION	NOTES
<p>MB</p> <pre> graph TD Q1{Is there cancer/malignant neoplasm, NOS (8000) and another is a specific histology?} Q2{Is there carcinoma, NOS (8010) and another is a specific carcinoma?} Q3{Is there adenocarcinoma, NOS (8140) and another is a specific adenocarcinoma?} Q4{Is there sarcoma, NOS (8800) and another is a specific sarcoma?} D{SINGLE Primary*} NP((Next Page)) Q1 -- YES --> D Q1 -- NO --> Q2 Q2 -- YES --> D Q2 -- NO --> Q3 Q3 -- YES --> D Q3 -- NO --> Q4 Q4 -- YES --> D Q4 -- NO --> NP </pre>		<div style="border: 1px solid black; padding: 5px;"> <p>1. Tumors not described as metastases. 2. Includes combinations of in situ and invasive.</p> </div>

Colon Multiple Primary Rules - Flow chart

(C180-C189)

(Excludes lymphoma and leukemia M9590-9989 and Kaposi sarcoma M9140)

* Prepare one abstract. Use the histology coding rules to assign the appropriate histology code.

** Prepare two or more abstracts. Use the histology coding rules to assign the appropriate histology code to each case abstracted.

