



# Weekly Progress



AMERICAN RECOVERY & REINVESTMENT ACT

Week Ending August 5, 2011



CHPRC-01524

Contract DE-AC06-08RL14788  
Modification MO47

---

# Contents

OVERVIEW .....	3
SUMMARY .....	4
ACCOMPLISHMENTS .....	5
RL-0011 Nuclear Materials Stabilization & Disposition.....	5
RL-0011.R1: Plutonium Finishing Plant D&D.....	5
RL-0013 Solid Waste Stabilization & Disposition .....	8
RL-0013C:R1.1: Mixed Low-Level Waste (MLLW)/Low-Level Waste (LLW) Treatment .....	8
RL-0013C:R1.2: Transuranic (TRU) Waste .....	8
RL-0030 Soil & Groundwater Remediation, Groundwater/Vadose Zone.....	9
RL-0030.R1: Central Plateau Soil & Groundwater .....	9
RL-0040 Nuclear Facility D&D – Remainder of Hanford .....	10
RL-0040.R1.1: U Plant/Other D&D .....	10
RL-0040.R1.2: Outer Zone D&D/Waste Sites .....	13
RL-0041 Nuclear Facility D&D – River Corridor Closure Project.....	14
RL-0041.R1.1: 100K Area Remediation .....	14
UPCOMING EVENTS .....	18

---

## OVERVIEW

CH2M HILL Plateau Remediation Company (CHPRC) is using funds from the American Recovery and Reinvestment Act (Recovery Act) to accelerate critical environmental cleanup across the Central Plateau and the 100K Area along the Columbia River to help pursue the U.S. Department of Energy (DOE) “2015 Vision” to shrink the Hanford Site cleanup footprint.

### RL-0011 PLUTONIUM FINISHING PLANT D&D

CHPRC is accelerating critical decontamination and decommissioning work to cleanout and prepare the Plutonium Finishing Plant (PFP) for demolition ahead of the Tri-Party Agreement milestone of September 2016.

### RL-0013 SOLID WASTE STABILIZATION & DISPOSITION

CHPRC is accelerating cleanup of Hanford’s legacy waste and fuels, including retrieving, repackaging, and shipping transuranic (TRU) waste and shipping mixed low-level waste (MLLW) and low-level waste (LLW) for treatment and/or disposal.

### RL-0030 SOIL & GROUNDWATER REMEDIATION

In the ongoing effort to protect the Columbia River, CHPRC is constructing two groundwater treatment facilities; installing 265 wells for monitoring, extracting, and remediating groundwater; and decommissioning 280 wells that are no longer of service.

### RL-0040 NUCLEAR FACILITY D&D REMAINDER OF HANFORD

Across the Central Plateau and along the outer zone of the Hanford Site, CHPRC is remediating 24 waste sites and decommissioning and demolishing (D&D) 34 facilities to reduce mortgage, surveillance, and maintenance costs on buildings that are no longer of service. The scope also includes cleanup along the outermost edges of the Hanford Site at the Arid Lands Ecology (ALE) Reserve and North Slope, preparing the U Plant for a first-of-its-kind canyon demolition, and preparing to disposition radioactive railcars in the 200 North Area.

### RL-0041 100K AREA REMEDIATION

CHPRC is demolishing 15 reactor support facilities and sampling and/or remediating 23 waste sites to shrink the cleanup footprint of two reactors, K East and K West, located in the 100K Area along the Columbia River.

## For More Information

To find out more about Recovery Act progress at the Hanford Site, visit [www.hanford.gov/recovery](http://www.hanford.gov/recovery).

For information about CHPRC, including weekly Recovery Act newsletters and videos, visit [www.plateauremediation.hanford.gov](http://www.plateauremediation.hanford.gov) or contact [chprcc@rl.gov](mailto:chprcc@rl.gov).

## SUMMARY

The following chart outlines CHPRC’s progress on its main Recovery Act work goals. Progress on subprojects and other Recovery Act-funded activities are detailed throughout this report and accompanied by a short progress video available on [www.youtube.com/hanfordplateau](http://www.youtube.com/hanfordplateau).

### PLUTONIUM FINISHING PLANT D&D



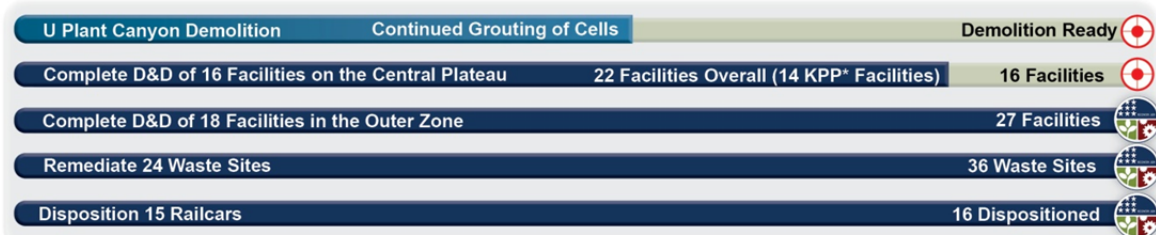
### SOLID WASTE STABILIZATION & DISPOSITION



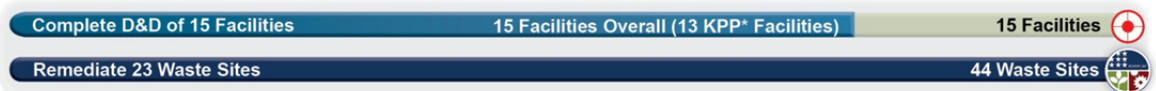
### SOIL & GROUNDWATER REMEDIATION



### NUCLEAR FACILITY D&D



### 100K AREA REMEDIATION



\*Key Performance Parameters (KPP) are specific items (wells, buildings, etc.) included in the Target. "Overall" indicates the total number completed with Recovery Act funds. "Completed" marks that CH2M HILL has completed a KPP.

## ACCOMPLISHMENTS

### RL-0011 Nuclear Materials Stabilization & Disposition

#### RL-0011.R1: Plutonium Finishing Plant D&D

ACTIVITY	PFP WASTE REMOVAL & DISPOSITION	
	<i>Week of August 5, 2011</i>	<i>Completed to Date with Recovery Act Funding</i>
<b>KPP-1, Lab &amp; Process Areas Ready for Demo</b>		
Gloveboxes/hoods removed or dispositioned in place	-	130 gloveboxes/hoods
Add'l gloveboxes ready for removal/size reduction	-	1 gloveboxes/hoods
MLLW/LLW shipped	14 m <sup>3</sup>	2,821 m <sup>3</sup>
TRU shipped	5 m <sup>3</sup>	657 m <sup>3</sup>
Non-radioactive waste shipped	-	27 m <sup>3</sup>
Process transfer line removed	-	535 feet
Process vacuum system piping removed	-	1,210 feet
Asbestos removed	73 feet	14,727 feet
<b>KPP-2 Fuel Vaults, Buildings Ready for Demo</b>		
Fuel vaults and ancillary buildings ready for demo	-	25 structures
Ancillary buildings/structures removed or demolished	-	20 structures

Progress on PFP ARRA scope continues to be impacted by increased absence and attrition rates, and reduced acceptance of planned overtime, among other factors attributable to issuing Workforce Adjustment and Retraining Notification Act notices.

#### *Process and Laboratory Areas*

General area cleanout is continuing in the Analytical Laboratories, the Plutonium Process Support Laboratory (PPSL), and the backside vault rooms. Equipment removal and cleanout were completed in Rooms 131 and 133 of the Analytical Lab, and they were declared KPP-complete this week. The work package for area cleanout in the Standards Laboratory was finalized and approved, and the team assigned this scope will begin work following a Hazards Review Board meeting early next week.

External isolations and process equipment removal continued from numerous process and conveyor gloveboxes in the RMA and RMC process lines, where significantly high levels of contamination and radiation dose rates complicate work. Removal of the conveyor system from the long HC-1 conveyor glovebox was completed in Rooms 228A and 228B, and removal of the guide rails was nearly complete in Room 228A by week's end. Mechanical isolations were completed and process equipment removal was initiated on HC-15ABC, and removal of hydraulic lines from HC-16CC and the four HC-17 gloveboxes in Room 228C is continuing. Conveyor removal is also underway in HC-2 in Rooms 230A and 230B, along with equipment removal from HC-21A and -21C. The first round of chemical decontamination was completed in large glovebox HA-23S, the last glovebox awaiting isolation in Room 235B. Efforts to clean out and remove gloveboxes HA-14S, P, and DC are nearing completion, and preparations are underway to begin chemical decontamination, the final task prior to removal of the three boxes from building ventilation.



Photo 1

*Tight spaces in the RMA/RMC areas are a challenge to safe glovebox removal. Completing glovebox cleanout in these areas requires careful planning and coordination.*



Photo 2

A Team in the RMA Process Line removes internal components from a glovebox. The boxes have been painted white to contain legacy contamination.

#### *Infrastructure, support systems, and equipment removal*

Glovebox HA-15 was shipped to the Central Waste Complex for disposal as transuranic waste, and gloveboxes 179-10 and 179-12 were shipped to Perma-Fix NorthWest (PFNW) for size reduction. Previously removed glovebox HA-16L was loaded with glovebox 188-1 for shipment to PFNW, likely in September. No process piping was removed this week due to the assignment of critical craft resources to higher priority Key Performance Parameter work scope in the RMA/RMC Line areas. The process transfer line removal crew began preparations to initiate work on another section of piping between the 242-Z building and the duct level of the 234-5Z building, while the process vacuum system removal crew continued preparing for the removal of 250 HEPA filters from deactivated filter rooms 311 and 316. Approximately 73 feet of asbestos insulation was removed from piping and ductwork, bringing the total removed to date with Recovery Act funds to more than 14,700 feet.

#### *2736-Z/ZB Vault Complex*

PFM and CHPRC D&D Project staff continue to ready the 4-building PFM Vault Complex and two ancillary buildings for demolition. The 2736-ZC and 2731-ZA buildings were certified Cold and Dark this week, and the 2721-Z building reached 95% complete. Progress to ready the PFM buildings for demolition has slowed and the timeline to demolish the buildings is being extended as the D&D Project focuses on completing their RL-040 Key Performance Parameters by fiscal year-end.

## RL-0013 Solid Waste Stabilization & Disposition

### RL-0013C:R1.1: Mixed Low-Level Waste (MLLW)/Low-Level Waste (LLW) Treatment

ACTIVITY	SOLID WASTE STABILIZATION & DISPOSITION <i>Total Completed with Recovery Act funds</i>
Ship 1,800 m <sup>3</sup> of MLLW/LLW for treatment and disposal	<ul style="list-style-type: none"> <li>• 1,918 m<sup>3</sup> shipped               <ul style="list-style-type: none"> <li>○ 1,462 m<sup>3</sup> treated and disposed</li> <li>○ 456 m<sup>3</sup> at offsite treatment facilities awaiting processing. Treatment is scheduled for FY11</li> </ul> </li> </ul>

Three shipments (27.7 m<sup>3</sup>) of MLLW debris from the Waste Retrieval Project (WRP) were made to Perma-Fix Northwest (PFNW) this week for treatment by macro-encapsulation. An additional MLLW shipment (49.4 m<sup>3</sup>) was sent from the Central Waste Complex (CWC) to PFNW for treatment by macro-encapsulation. The processed waste from these shipments will be returned to the Hanford Site for disposal in the mixed waste disposal units.

### RL-0013C:R1.2: Transuranic (TRU) Waste

ACTIVITY	SOLID WASTE STABILIZATION & DISPOSITION <i>Total Completed with Recovery Act funding</i>
Retrieve 2,500 m <sup>3</sup> of suspect TRU waste	<ul style="list-style-type: none"> <li>• 299 m<sup>3</sup> are staged, pending shipment</li> <li>• 1,874 m<sup>3</sup> shipped to a treatment, storage, or disposal facility</li> </ul>
Retrieve 50 m <sup>3</sup> of suspect remote-handled TRU waste	<ul style="list-style-type: none"> <li>• 3 m<sup>3</sup> are staged, pending shipment.</li> <li>• 84 m<sup>3</sup> shipped to a treatment, storage, or disposal facility</li> </ul>

At Trench 11 of the 4B burial ground, workers completed excavation and removed the final container (33.5 m<sup>3</sup>) scheduled for retrieval. One container (3.72 m<sup>3</sup>) was shipped to PFNW. Workers continued excavating the overburden from Trench 7, Module 5 and conducted removal set-up activities from Trench 7, Module 7.

At the 12B burial ground, 40 drums and 10 boxes (17.6 m<sup>3</sup>) were removed from Trench 17. Twenty-four TRU was drums (5 m<sup>3</sup>) in standard waste boxes (SWB) were shipped to CWC and 120 LLW drums (25.2 m<sup>3</sup>) in 8 x 4 x 4 foot waste boxes were shipped to PFNW. Thirteen drums were assayed in the Passive/Active Neutron Assay System and two drums were x-rayed and sampled in the Real-Time Radiography (RTR) System.

### TRU Repackaging & Shipments

ACTIVITY	SOLID WASTE STABILIZATION & DISPOSITION <i>Total Completed with Recovery Act funding</i>
Repackage 850 m <sup>3</sup> of WIPP certifiable TRU waste	<ul style="list-style-type: none"> <li>• 1,051 m<sup>3</sup> have been repackaged</li> </ul>
Disposition 2,000 m <sup>3</sup> of contacted-handled TRU waste	<ul style="list-style-type: none"> <li>• 1,922 m<sup>3</sup> have been disposed</li> </ul>

Certification of the Hanford Site's TRU waste assay equipment, the Super High-Efficiency Neutron Coincidence (HENC) and the High-Energy RTR, was received from the Waste Isolation Pilot Plant (WIPP). TRUPACT-II shipments from the Hanford Site are scheduled to resume August 8, 2011.



## RL-0030 Soil & Groundwater Remediation, Groundwater/Vadose Zone

RL-0030.R1: Central Plateau Soil & Groundwater

ACTIVITY	Week of August 4, 2011	Complete to Date with Recovery Act funds
Install 265 wells and/or boreholes along the river and in the Central Plateau	--	303
Decommission 280 old wells and boreholes that are no longer of service	--	280
Construct the 200 West Groundwater Treatment Facility	88% complete	

### 200 West Groundwater Treatment Facility

Recent construction of the process and transfer facilities included (listed by facility):

- *Process buildings*
  - Radiological Building: Construction acceptance testing continues for all disciplines. Construction punchlist items initiated.
  - Bio-Process Building: In process work continues for all disciplines. Second shift continues to focus on (critical path) installation of chemical piping in the chemical area.
  - Bio Pad: Focus on the completion of the Fluidized Bed Reactor and Membrane Bed Reactor areas continued. Continued steel installation on the utility racks, hand rails, toe boards, grating, anchor bolts and grouting base plates. Continued installation of vapor off gas duct work and blower equipment (minimal connection points remain).
- *Transfer buildings*
  - Extraction Building #1: Acceptance Test Procedure continued (one part on order to continue process).
  - Extraction Building #2: Construction punchlist items continued. Construction Acceptance Testing complete.
  - Injection Building #1: Construction punchlist items continued. Final wrap up of outstanding CAT issues.
  - Injection Building #2: Mechanical Electrical Process build out continues.



Photo 3

200 West Groundwater Treatment Facility conducts morning stretch and flex exercises as a safety measure to reduce strains, sprains and other potential job related injuries.

## RL-0040 Nuclear Facility D&D – Remainder of Hanford

### RL-0040.R1.1: U Plant/Other D&D

#### CENTRAL PLATEAU FACILITIES DEMOLISHED WITH RECOVERY ACT FUNDS

- 211U Cold Chemical Makeup Tank Farm
- 211UA Cold Chemical Makeup Tank Farm Addition
- 203UX Gas Storage Facility
- 2701M Office Bldg
- 272E Fabrication, Mockup Shop Bldg
- 2716E Power Maintenance Storage Bldg
- 2722W Welding Laboratory Bldg
- 224UA UO3 Calcination/Load-out Facility
- 2710W Coal Handlers Shed\*
- 2701EC 209E Guard Station\*
- 2902E Water Storage Tank\*
- 2734EA Gas Cylinder Storage Bldg
- 275E Carpenter Shop Bldg
- MO104 Mobile Office
- MO405 Mobile Office
- MO840 Mobile Office
- X8 Motor Car Shed
- 224U UO3 Plant Concentration/Load-out Bldg
- 284WB Package Boiler Plant
- 209EA 90 Day Storage Pad\*
- 2902W Water Storage Tank\*
- 284E Power House & Steam Plant

TOTAL:170,926 square feet

#### PLANNED FOR D&D/IN PROGRESS

- 209E Critical Mass Laboratory
- 284W Power House & Steam Plant
- 2718E 209E Fissile Material Storage\*

\*Not part of the Key Performance Parameter

### *U Canyon*

CHPRC crews have removed the D-10 Tank from Cell 30, transported it across the Canyon deck with the facility's overhead crane, and safely placed it into a specially designed shipping container inside the 221-U railroad tunnel. Teat-Sorb absorbent was added to the container around the tank and the container's inner lid was fitted in preparation for the tank's removal from the building. Grouting operations to fill U Canyon void spaces continued, with subcontractors AGEK and Central Pre-Mix passing the half-way mark of the total planned 20,318 cubic yards of grout.



Photo 4

*At U Canyon, Field Work Supervisor Mark Tews rushes to congratulate crane operator Mike Yencopal after he successfully lifted the D-10 Tank from Cell 30, transported it the length of the canyon, and placed it into a specially designed shipping container in the U Canyon railroad tunnel. Meanwhile, grout operations have filled over half of U Canyon void spaces with grout, passing the 10,200 cubic yard mark out of a planned total of 20,318 cubic yards.*

### *200 West Area Industrial Facilities*

Asbestos abatement continued inside the 284-W Power House building in a mass containment on the structure's second and third floors, with abatement nearly complete on the second floor and 50 percent complete on the third. Abatement on the first, fourth and fifth floors is complete.

### *209-E Criticality Mass Laboratory*

CHPRC crews continue to size-reduce and remove slab tanks from the 209-E facility, loading out Tank 235 in an IP-2 container. Upon removal of all 11 tanks, the 209-E facility can be downgraded to a Less Than Hazard Category 3 (non-nuclear) facility and demolished.



*At the 209-E Critical Mass Laboratory, crews motion to the crane operator as slab tank 235 (in black plastic) is placed into an IP-2 container for disposal. Six of the 11 slab tanks in the facility have now been size-reduced and removed.*

Photo 5

## RL-0040.R1.2: Outer Zone D&amp;D/Waste Sites

## OUTER ZONE FACILITIES DEMOLISHED WITH RECOVERY ACT FUNDS

212N Storage Building	6652M Fallout Laboratory
212P Electrical Storage & Transformer Shop	6652R Acid Storage Shed
212R Storage Building	6652C Space Science Laboratory
614 Monitor Station	6652CSHED Storage Building
646 Radioecology Field Laboratory	6652D Pump House
6652G ALE Field Storage Building	6652T Fire Protection Lower Pump House
6652H ALE Laboratory 1	6652U Rattlesnake Mountain Upper Pump House
6652I ALE Headquarters	623A Plant Radio Relay Bldg
6652J ALE Laboratory II	T520-6 Navy MARS Radio Station
6652S Sentry Shed*	6631 Radio Telescope Pedestal*
6634 ENW Tower and Building*	6630 Hodges Well Pumphouse*
6635 Crown Castle/Cingular Tower and Building *	6636 Columbia Communication Tower and Building*
6637 Tri City Amateur Radio Tower and Building*	6633 Franklin County Communication Building*
6632 Verizon Telephone Enclosure*	<b>TOTAL: 62,748 square feet</b>

\*Not part of the Key Performance Parameter

*North Slope Debris Removal*

CHPRC crews have completed cleanup of debris sites in Areas, 10-18 of the Hanford Reach National Monument, completing North Slope debris cleanup well ahead of the Sept. 30, 2011 deadline. Closure documentation is being prepared.

*D&D of Railcars Located on the 212-R Rail Spur*

All railcars have been removed from the 212-N site, with demobilization underway.

*Waste Sites*

Recent activities regarding the outer zone waste sites included (listed by operable unit or site):

- *200-MG-1*
  - 216-S-19: Excavation has resumed at the pond and is currently planned to last 2-3 weeks.
  - 216-S-26: Additional sampling from 15-20 feet was completed as required by the MG-1 RAWP. Down posting and backfill operations are planned to commence within the next 3 weeks.
  - 600-281: Verification sample evaluation is complete with a backfill concurrence form in process. Backfill is planned within the next 2 weeks.
  - 600-49: Initial excavation field activities are complete. Verification sample results have been received and are below cleanup criteria.
  - 600-228: Verification sampling has been completed with results expected within the next two weeks.
- *BC Control Area*
  - Excavation of Zone A and removal of the stockpile to ERDF is complete. A cumulative total of ~ 483,000 tons of soil has been deposited at ERDF. Zone A is down posted and the subcontractor has finished demobilization efforts.



Photo 6

*An aerial photograph of the 212-N site where 15 railcars were removed by crews with CHPRC and subcontractors Fluor Federal Services, Barnhart Crane and Clauss Construction.*

## RL-0041 Nuclear Facility D&D – River Corridor Closure Project

### RL-0041.R1.1: 100K Area Remediation

#### 100K AREA FACILITIES DEMOLISHED WITH RECOVERY ACT FUNDS

- 183KW Chlorine Vault
- 183.1KW Headhouse
- 183.2KW Sedimentation Basin
- 183.3KW Filter Basin
- 116KE Reactor Exhaust Stack
- 118KE Horizontal Control Rod Storage
- MO048 Construction Lunch Trailer
- MO969 Ops/HPT Change Trailer

#### PLANNED FOR D&D/IN PROGRESS

- 183.4KW Clearwell
- 183.4KE Clearwell
- 190KW Main Pump House
- 190KE Main Pump House
- 181KW River Pump House
- 183.3KE Filter Basin

- 183.7 KW Pipe Tunnel
- 110KE Gas Storage Facility
- 110KW Gas Storage Facility
- 115KE Gas Recirculation
- 185-K Potable Water Treatment Plant\*
- 117 KE Exhaust Air Filter Bldg
- 181KE River Pump House
- 1605KE Guard House
- 183.1KE Headhouse

**TOTAL: 429,894 square feet**

### *Facility D&D*

Demolition continued on the 190-KE Main Pump House, with cutting torches used to weaken the structure for demolition, and on the east and west sides of the 183.3-KE Filter Basins. Demolition of the 181-KW River Pumphouse structure neared completion, and resumed on the 181-KE River Pumphouse. Demolition of the 1717-K Maintenance Shop began.

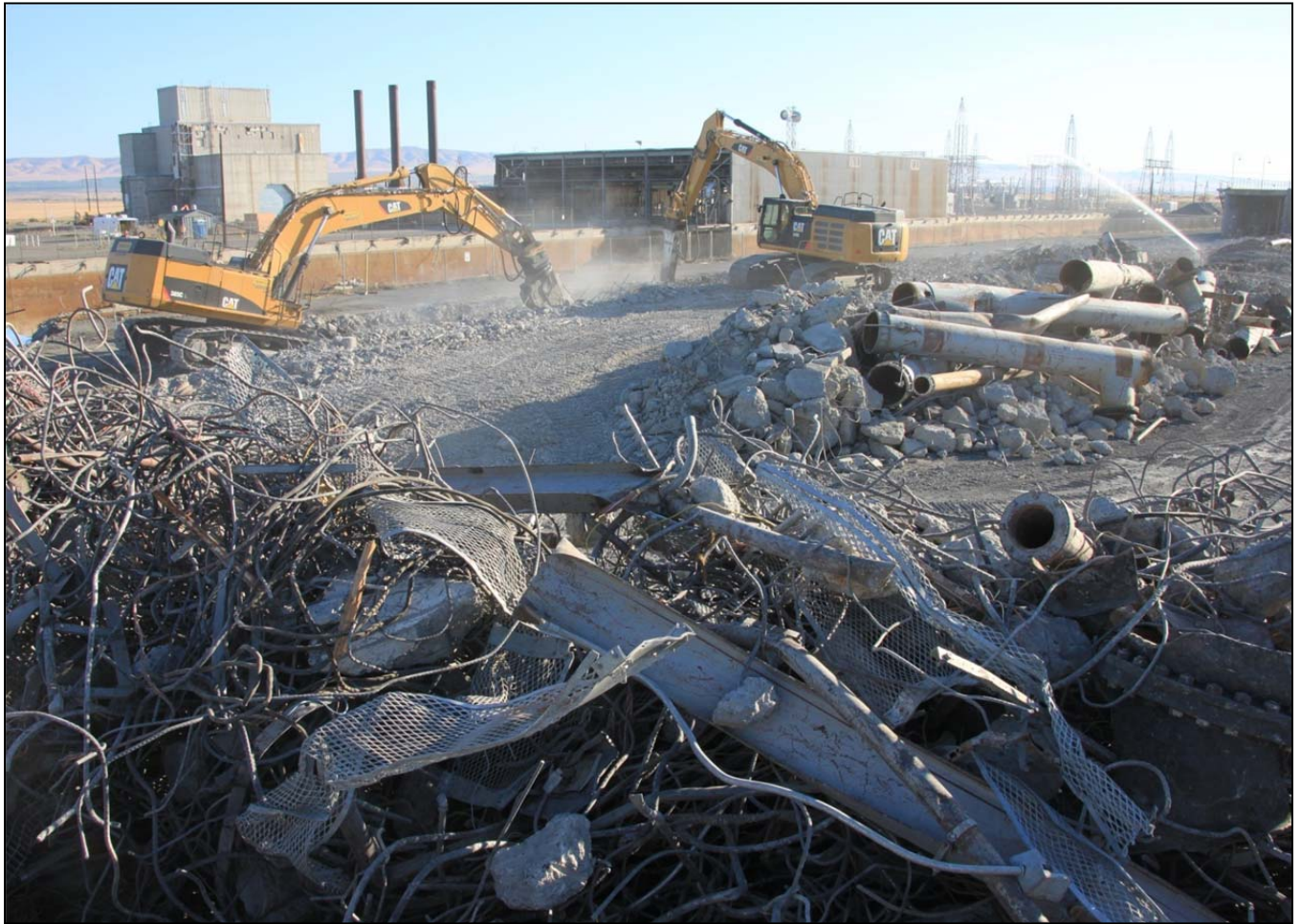


Photo 7

Demolition continues on the east and west (pictured) sides of the 183.3-KE Filter Basins, where water from the Columbia River was first filtered for passage through the K East Reactor system.



Photo 8

*Demolition continues on the 181-KE River Pumphouse, where 240,000 gallons of Columbia River water per minute was pumped into the K East Reactor system. Demolition of the 181-KW Pumphouse is nearly complete.*





Photo 9

Demolition began on the 1717-K Maintenance Shop, one of four remaining buildings at 100K – along with the 1720-K Main Entrance Building, the 1717-AKE Maintenance building, and the 190KE Pumphouse – to be demolished with ARRA funds by September 30, 2011.

#### Waste Sites

100-K-79 waste site (Sodium Dichromate and Sulfuric Acid Product Pipelines at 100-K): Confirmatory sampling continues.

## UPCOMING EVENTS

### RL-0011 Nuclear Materials Stabilization & Disposition

RL-0011.R1: Plutonium Finishing Plant D&D

- Complete Cold and Dark certifications and declare the 4-building PFP vault complex and two ancillary buildings ready-for-demolition.
- Complete final area cleanout in the Standards, Analytical and Plutonium Process Support Laboratories and the 234-5Z vault rooms.
- D&D the remaining gloveboxes in the RMA/RMC Line process areas.
- Remove more than 200 contaminated HEPA filters from 234-5Z final filter rooms 311 and 316.
- Continue removing process vacuum piping, process transfer lines and asbestos insulation from throughout 234-5Z building as resources are available.

### RL-0013 Solid Waste Stabilization & Disposition

RL-0013C:R1.1: MLLW Treatment

- Two MLLW shipments (25 m<sup>3</sup>) planned from the WRP to PFNW.

RL-0013C:R1.2: TRU Waste

- TRU Retrieval
  - 3A burial ground
    - Continue clean-up and lay-up activities at Trenches 8 and 17.
  - 4B/4C burial ground
    - Begin the 4B Process Area assay campaign.
    - Perform portable assay of remaining Trench 11 containers.
    - Perform ground-penetrating radar scan in Trench 11 of the 4B burial ground to validate the completion of container removal.
    - Ship 23 waste containers (41.8 m<sup>3</sup>) from the 4C Process Area to CWC and PFNW.
    - Vent 12 TRU waste drums at the 4C Process Area in the Mobile Drum Venting System and load the drums into SWBs in preparation for shipment.
    - Complete portable assay of removed 4B Trench 11 waste containers in the 4C Process Area.
    - Continue excavation and begin removal of drums from Trench 7 of the 4B burial ground.
    - Overpack five metal containers into 9 x 5 x 5 foot waste containers in preparation for shipment.
    - Begin 4C Process Area drum assay campaign.
  - 12B burial ground
    - Continue drum removal and characterization of containers from Trench 17.
    - Set-up and remove the remaining 22 drums from Trench 27.
- TRU Repackaging and Shipments
  - Six planned shipments.
- Suspect TRU Waste Shipments
  - No planned shipments.

### RL-0030 Soil & Groundwater Remediation, Groundwater/Vadose Zone

RL-0030.R1: Central Plateau Soil & Groundwater

- Continue construction of the 200 West Groundwater Treatment Facility.

---

## RL-0040 Nuclear Facility D&D – Remainder of Hanford

### RL-0040.R1.1: U Plant/Other D&D

- Remove the D-10 Tank from 221-U Canyon for disposal.
- Continue pouring grout into U Canyon cells.
- Continue size-reduction of slab tanks inside the 209-E Criticality Mass Laboratory.
- Continue asbestos abatement inside the 284-W Power House.

### RL-0040.R1.2: Outer Zone D&D/Waste Sites

- Continue planning for and remediating 200-MG-1 waste sites.

## RL-0041 Nuclear Facility D&D – River Corridor Closure Project

### RL-0041.R1.1: 100K Area Remediation

- Continue demolition of 190-KE Main Pump House.
- Continue demolition and loadout of the 183.3-KE Filter Basins.
- Complete demolition of 181-KW River Pumphouse Structure.
- Continue excavating soil from and planning for remediation of 100K Area waste sites.