



Weekly Progress



AMERICAN RECOVERY & REINVESTMENT ACT

Week Ending Mar. 25, 2011



CHPRC-01278

Contract DE-AC06-08RL14788
Modification MO47

Contents

OVERVIEW.....	3
SUMMARY.....	4
ACCOMPLISHMENTS.....	5
RL-0011 Nuclear Materials Stabilization & Disposition.....	5
RL-0011.R1: Plutonium Finishing Plant D&D.....	5
RL-0013 Solid Waste Stabilization & Disposition.....	5
RL-0013C:R1.1: Mixed Low-Level Waste/Low-Level Waste Treatment.....	10
RL-0013C:R1.2: Transuranic Waste.....	11
RL-0030 Soil & Groundwater Remediation, Groundwater/Vadose Zone.....	12
RL-0030.R1: Central Plateau Soil & Groundwater.....	13
RL-0040 Nuclear Facility D&D – Remainder of Hanford.....	15
RL-0040.R1.1: U Plant/Other D&D.....	15
RL-0040.R1.2: Outer Zone D&D/Waste Sites.....	15
RL-0041 Nuclear Facility D&D – River Corridor Closure Project.....	20
RL-0041.R1.1: 100K Area Remediation.....	21
UPCOMING EVENTS.....	24

OVERVIEW

CH2M HILL Plateau Remediation Company (CHPRC) is using funds from the American Recovery and Reinvestment Act (Recovery Act) to accelerate critical environmental cleanup across the Central Plateau and the 100K Area along the Columbia River to help pursue the U.S. Department of Energy (DOE) “2015 Vision” to shrink the Hanford Site cleanup footprint.

RL-0011 PLUTONIUM FINISHING PLANT D&D

CHPRC is accelerating critical decontamination and decommissioning work to cleanout and prepare the Plutonium Finishing Plant (PFP) for demolition by 2013, three years ahead of the Tri-Party Agreement milestone of September 2016.

RL-0013 SOLID WASTE STABILIZATION & DISPOSITION

CHPRC is accelerating cleanup of Hanford’s legacy waste and fuels, including retrieving, repackaging, and shipping transuranic (TRU) waste and shipping mixed low-level waste (MLLW) and low-level waste (LLW) for treatment and/or disposal.

RL-0030 SOIL & GROUNDWATER REMEDIATION

In the ongoing effort to protect the Columbia River, CHPRC is constructing two groundwater treatment facilities; installing 265 wells for monitoring, extracting, and remediating groundwater; and decommissioning 280 wells that are no longer of service.

RL-0040 NUCLEAR FACILITY D&D REMAINDER OF HANFORD

Across the Central Plateau and along the outer zone of the Hanford Site, CHPRC is remediating 24 waste sites and decommissioning and demolishing (D&D) 34 facilities to reduce mortgage, surveillance, and maintenance costs on buildings that are no longer of service. The scope also includes cleanup along the outermost edges of the Hanford Site at the Arid Lands Ecology (ALE) Reserve and North Slope, preparing the U Plant for a first-of-its-kind canyon demolition, and preparing to disposition radioactive railcars in the 200 North Area.

RL-0041 100K AREA REMEDIATION

CHPRC is demolishing 15 reactor support facilities and sampling and/or remediating 23 waste sites to shrink the cleanup footprint of two reactors, K East and K West, located in the 100K Area along the Columbia River.

For More Information

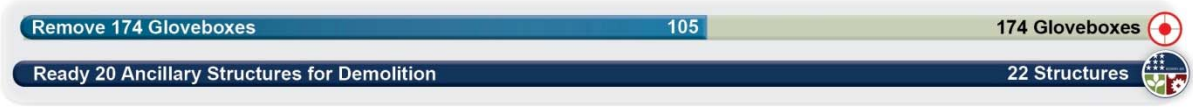
To find out more about Recovery Act progress at the Hanford Site, visit www.hanford.gov/recovery.

For information about CHPRC, including weekly Recovery Act newsletters and videos, visit www.plateauremediation.hanford.gov or contact chprcc@rl.gov.

SUMMARY

The following chart outlines CHPRC’s progress on its main Recovery Act work goals. Progress on subprojects and other Recovery Act-funded activities are detailed throughout this report and accompanied by a short progress video available on www.youtube.com/hanfordplateau.

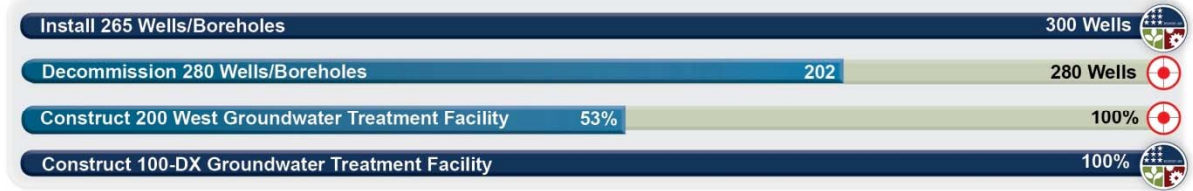
PLUTONIUM FINISHING PLANT D&D



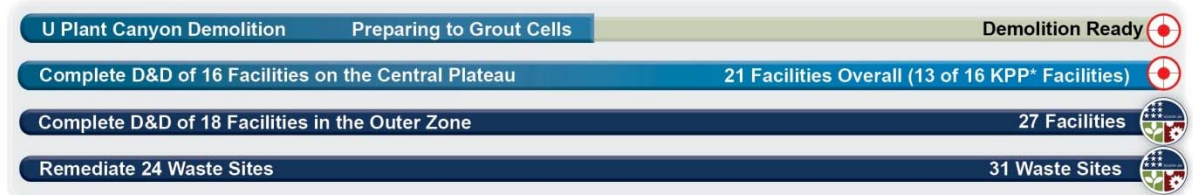
SOLID WASTE STABILIZATION & DISPOSITION



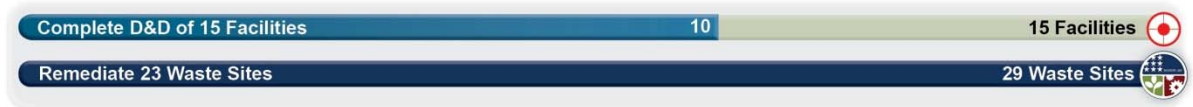
SOIL & GROUNDWATER REMEDIATION



NUCLEAR FACILITY D&D



100K AREA REMEDIATION



*Key Performance Parameters (KPP) are specific items (wells, buildings, etc.) included in the Target. "Overall" indicates the total number completed with Recovery Act funds. "Completed" marks that CH2M HILL has completed a KPP.

ACCOMPLISHMENTS

RL-0011 Nuclear Materials Stabilization & Disposition

RL-0011.R1: Plutonium Finishing Plant D&D

ACTIVITY	PFP WASTE REMOVAL & DISPOSITION	
	<i>Week of March 25, 2011</i>	<i>Completed to Date with Recovery Act funding</i>
Gloveboxes/hoods removed	1	105 gloveboxes/hoods
MLLW/LLW shipped	21 m ³	2,443 m ³
TRU shipped	13 m ³	500 m ³
Non-radioactive waste shipped	-	23 m ³
Process transfer line removed	21 feet	476 feet
Process vacuum system piping removed	-	1,210 feet
Asbestos removed	75 feet	13,764 feet

Process and Laboratory Areas

Glovebox 522 was removed from room 152 and staged for size reduction. Of the 76 gloveboxes originally installed in the laboratory, only one remains in room 145; 56 of the 75 boxes removed to date have been accomplished with Recovery Act funds. The second cycle of chemical decontamination was completed on glovebox 145-1 and initial survey results were encouraging. A third application of RadPro® will be completed before painting the box and removing it from building ventilation.

In the Plutonium Process Support Laboratory (PPSL), gloveboxes 179-10, -11, and -12 have been separated and relocated to another area within the room. Preparations to separate gloveboxes 179-2, -3 and -4 were completed and the boxes are ready for removal. Three of the gloveboxes met LLW criteria and will be removed for onsite disposal at the Environmental Restoration Disposal Facility (ERDF); the other three gloveboxes will be staged for size reduction and disposal as TRU waste.

In the Remote Mechanical C Line, the HC-3 and HC-4 conveyor gloveboxes were isolated from building ventilation. Two of the three sections of glovebox HC-3 were separated and are awaiting removal from room 230C; the HC-4 glovebox must be removed from room 230B prior to removing the third section. Wall modifications will also be completed to allow for removal of glovebox HC-4, and the HC-3 and HC-4 gloveboxes are expected to be removed by the end of March. In the Remote Mechanical A Line, the HA-19B1 and -B2 gloveboxes were isolated from building ventilation, and the upper section of B2 was separated and removed. The lower portion of B2 will be removed as a unit with B1 next week.

In the Radioactive Acid Digestion Test Unit area, the crew completed removal of off-gas piping between gloveboxes 200 and 300 and the interior of both boxes were painted for contamination control. Preparations were completed to air gap a large de-mister tank on glovebox 300 and to tap and drain a 3-inch line to confirm it contains no residual liquid. Once these actions are complete, gloveboxes 100B/C, 200, and 300 will be removed from building ventilation.

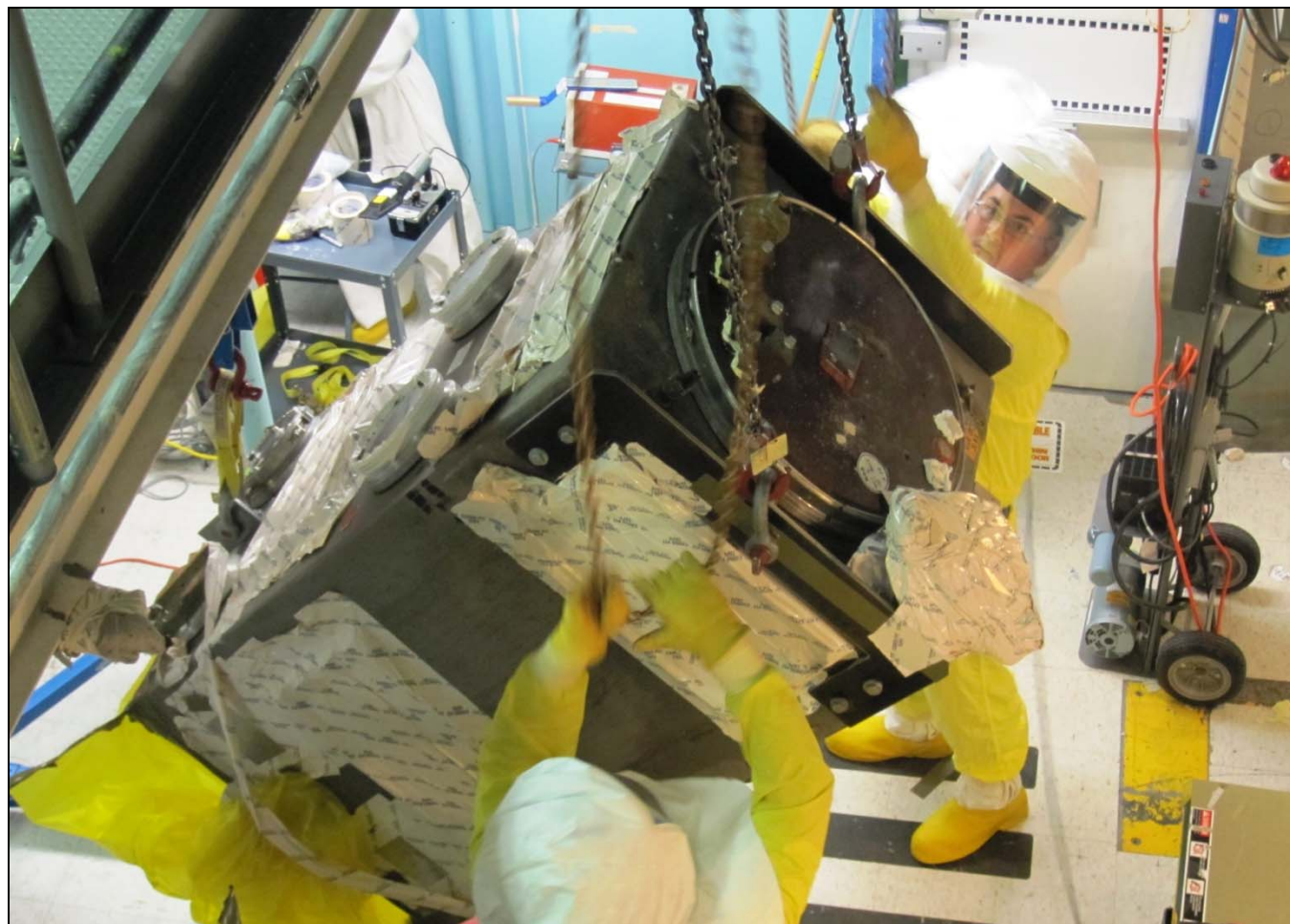


Photo 1

Workers hoist the upper section of glovebox HA-19-B2 for removal from the Plutonium Finishing Plant.

2736-Z/ZB Vault Complex

The vault complex D&D team has removed approximately 50 feet of the most contaminated sections of the glovebox exhaust ductwork, estimated at 80 feet in length. The work plan is complete for characterizing other, less contaminated ductwork to identify any additional sections that need to be removed.

242-Z Americium Recovery Facility

The 242-Z D&D team initiated a new, more efficient work process allowing them to make two fresh-air entries into the facility per day instead of one. Size reduction of the first two gloveboxes is accelerating; the team is 90 percent complete on glovebox WT-5 and 60 percent complete on WT-4. Once complete, the pieces of both gloveboxes will be packaged in standard waste boxes (SWBs) and shipped to the Waste Receiving and Processing facility (WRAP) for disposal as TRU waste. The team also terminated the process transfer lines between the 242-Z and 234-5Z buildings, enabling removal work to begin on 240 feet of piping from within the duct level of the 234-5Z building.

Infrastructure, support systems, and equipment removal

Approximately 34 cubic meters of waste were shipped from PFP, including sections of two 2736-ZB gloveboxes while two sections of the 70-foot long HA-28 conveyor glovebox were loaded for shipment to PFNW. The process vacuum system piping removal team completed their planned removals for the second quarter and are supporting readying of the vault complex for demolition. The process transfer line

removal crew completed its fourth 115-foot increment of piping. Work to install two, trailer-mounted 1500 KVA transformers to support temporary power distribution continued on the north and south sides of the 234-5Z building.



Photo 2

A section of the 70-foot-long HA-28 conveyor glovebox is removed from the Plutonium Finishing Plant for shipment and disposal.



A section of the 70-foot-long HA-28 conveyor glovebox is loaded into a container for shipment and disposal.

Photo 3



Photo 4

Transformers fabricated at an offsite vendor for use at the Plutonium Finishing Plant (PFP). The substations will provide temporary power to support demolition of the former PFP process facilities.



Photo 5

A portable power substation en route to the Plutonium Finishing Plant where it will be used to provide temporary power during demolition preparations of the 2736-ZB vault complex, planned for demolition to begin in spring of 2011.

RL-0013 Solid Waste Stabilization & Disposition

RL-0013C:R1.1: Mixed Low-Level Waste/Low-Level Waste Treatment

ACTIVITY	SOLID WASTE STABILIZATION & DISPOSITION
Ship 1,800 m ³ of MLLW/LLW for treatment and disposal	<i>Total Completed with Recovery Act funds</i>
	<ul style="list-style-type: none"> • 1,249 m³ shipped <ul style="list-style-type: none"> ○ 1,058 m³ treated and disposed ○ 191 m³ at offsite treatment facilities awaiting processing. Treatment is scheduled for FY11

Three shipments were sent from the Central Waste Complex (CWC) to Perma-Fix Northwest (PFNW) for processing this week. The first two shipments (18 m³) included LLW debris that will be volume reduced and radiologically stabilized. The third shipment (7.8 m³) contained MLLW debris that will be macro-encapsulated. The processed waste from all three shipments will be returned to the Hanford Site for disposal in the Mixed Waste Disposal Units at the low-level burial grounds.



Photo 6

Radiological control personnel survey a shipment of mixed low-level waste debris at the Central Waste Complex to ensure the shipping criteria are met for transportation to Perma-Fix Northwest to undergo treatment.

RL-0013C:R1.2: Transuranic Waste

ACTIVITY	SOLID WASTE STABILIZATION & DISPOSITION <i>Total Completed with Recovery Act funding</i>
Retrieve 2,500 m ³ of suspect TRU waste	<ul style="list-style-type: none"> • 488 m³ are staged, pending shipment • 846 m³ shipped to a treatment, storage, or disposal facility
Retrieve 50 m ³ of suspect remote-handled TRU waste	<ul style="list-style-type: none"> • 43 m³ are staged, pending shipment. • 37 m³ shipped to a treatment, storage, or disposal facility

At the 3A burial ground, Box 23 (54.4 m³) was removed from Trench 17. Four remote-handled (RH) culverts (12.8 m³) were shipped to PFNW and three RH culverts (9.6 m³) were shipped to CWC. Also at Trench 17, workers excavated, installed plywood reinforcing walls and a cover, and completed pre-fabrication of the shoring box for Box 24. Three long culverts (21.8 m³) from Trench 8 were overpacked, shielded, and prepared for shipment to CWC.

At the 4B burial ground, waste retrieval workers removed the last RH 3 x 3 x 3 ft concrete box (~.8 m³) from the west end of Trench 11. An assay campaign of six drums, two 7 x 4 x 4 ft fiberglass-reinforced plywood boxes, and three 3 x 3 x 3 ft concrete boxes was completed in the 4C area. Down-posting of the high radiation/contamination areas around the RH containers was completed.

At the 12B burial ground, excavation continued in Trench 17 under the Weather Enclosure and in Trench 27. The ground-penetrating radar scan for the south portion of Trench 17 was completed. Twenty-nine drums (including one high dose drum) were assayed and one drum was vented. The semiannual leak test was completed and four drums were assayed in the Real-Time Radiography System.



Photo 7

Box 24, a box of transuranic waste, was surrounded with plywood shoring walls and a cover in preparation for removal from Trench 17 of the 3A burial ground.

TRU Repackaging & Shipments

ACTIVITY	SOLID WASTE STABILIZATION & DISPOSITION <i>Total Completed with Recovery Act funding</i>
Repackage 850 m ³ of WIPP certifiable TRU waste Disposition 2,000 m ³ of contacted-handled TRU waste	<ul style="list-style-type: none"> • 693.2 m³ have been repackaged • 1,175 m³ have been disposed

Eleven drums were repackaged at T Plant and three at WRAP for a total of 14 drums repackaged this week. In conjunction with the Central Characterization Program, four TRUPACT-II shipments left the Hanford Site bound for the Waste Isolation Pilot Plant (WIPP), for a total of 159 shipments completed since shipments resumed, thanks to Recovery Act funding, in March 2010.

Two shipments were made from CWC to PFNW. A third shipment was sent from the Low-Level Burial Ground Waste Retrieval Project to PFNW. The shipments included six boxes of TRU debris (35.3 m³)

sent to PFNW for repackaging into SWBs or 55-gallon drums. The repackaged TRU waste will be returned to the Hanford Site for WIPP certification activities.

RL-0030 Soil & Groundwater Remediation, Groundwater/Vadose Zone

RL-0030.R1: Central Plateau Soil & Groundwater

ACTIVITY	WELL DRILLING & DECOMMISSIONING	
	Week of Mar. 25, 2011	Complete to Date with Recovery Act funds
Install 265 wells and/or boreholes along the river and in the Central Plateau	3 wells in progress	300
Decommission 280 old wells and boreholes that are no longer of service	3 well completed	202

200 West Groundwater Treatment Facility

Construction of the process and transfer facilities also included (listed by facility):

- *Process buildings*
 - Radiological Building: Process piping rough-in continued overhead as well as in the trenches. Installation of ductwork was initiated. Lighting and power conduits overhead as well as installation of exterior transformers and rough-in for controls with the mechanical ductbank continued.
 - Bio-Process Building: Activities included C- and A-line utility racks process piping installation, fire protection wet system installation, construction of concrete containment curbs in the chemical room, electrical rough-in, installation of exterior transformers, and outside canopy slab-on-grade and trench formwork. All major process equipment is placed.
 - Bio Pad: Concrete formwork for the splitter box and main mechanical duct bank continued as did steel installation on the utility racks, hand rails, grating, conduit, sleeves, and cabling for lightning protection.
- *Transfer buildings*
 - Construction of the two extraction and two injection buildings included service gear installation, initiation of instrumentation and controls rough-in, and continued curing on the last mechanical pads with piping installation. Supply and exhaust fan installation was also initiated.
- *Lime Building*
 - Activities for the footings and underground conduit installation continued.



Photo 8

An aerial of the 200 West Groundwater Treatment Facility during the week ending March 25, 2011. Construction is more than 50 percent complete. As part of the green build initiative to achieve Leadership in Energy and Environmental Design (LEED) certification, the building site must be tightly confined to minimize site disturbance.



Photo 9

A worker compacts rock and gravel outside of a transfer building for the 200 West Groundwater Treatment Facility. The use of rock as opposed to pavement was part of a Value Engineering initiative to reduce construction costs.

RL-0040 Nuclear Facility D&D – Remainder of Hanford

RL-0040.R1.1: U Plant/Other D&D

CENTRAL PLATEAU FACILITIES DEMOLISHED WITH RECOVERY ACT FUNDS

- 211U Cold Chemical Makeup Tank Farm
 - 211UA Cold Chemical Makeup Tank Farm Addition
 - 203UX Gas Storage Facility
 - 2701M Office Bldg
 - 272E Fabrication, Mockup Shop Bldg
 - 2716E Power Maintenance Storage Bldg*
 - 2722W Welding Laboratory Bldg*
 - 224UA UO3 Calcination/Load-out Facility
 - 2710W Coal Handlers Shed
 - 2701EC 209-E Guard Station
 - 2902E Water Storage Tank
 - 2734EA Gas Cylinder Storage Bldg
 - 275E Carpenter Shop Bldg
 - MO104 Mobile Office
 - MO405 Mobile Office
 - MO840 Mobile Office
 - X8 Motor Car Shed*
 - 224U UO3 Plant Concentration/Load-out Bldg
 - 284WB Package Boiler Plant
 - 209EA 90 Day Storage Pad
 - 2902W Water Storage Tank
- TOTAL: ~108,951 square feet**

*Not part of the Key Performance Parameter

PLANNED FOR D&D/IN PROGRESS

- 284E Power House & Steam Plant
- 209E Critical Mass Laboratory
- 284W Power House & Steam Plant

U Canyon

CHPRC subcontractor Watts Construction continued hauling clean rubble from the site of the demolished 183-KW Sedimentation Basins to the U Canyon site in preparation for the building's eventual demolition.

Inside the canyon, core drilling of the second set of grout conveyance holes began, with three holes now completed. Preparations for a “test pour” in the North Electrical Gallery continued, with bulkhead construction complete and the pour expected next week.



Photo 10

Workers carry hoses into the U Canyon in preparation for grouting of void spaces in the building interior.

U Plant Ancillary Facilities

Closure documentation is being prepared.

200 East Core Industrial Area

Demolition of the 284-E Power House continued, along with debris cleanup of the exhaust chimneys, baghouses, and coal silo that were brought down by explosive demolition on March 4.



Photo 11

A section of exhaust duct is removed from the 284-E Power House. CHPRC began demolishing the facility after using explosives to lower chimneys, baghouses, and a coal silo associated with the building on March 4, 2011.

200 West Area Industrial Facilities

Debris cleanup at the site of the explosive demolitions of the 284-W Power House stacks and baghouses continued, along with asbestos abatement inside the 284-W Power House building, where workers have completed work on the first floor of the building.



Photo 12

CHPRC is cleaning up debris from the explosive demolition of structures that supported the 284-W Power House.

209-E Criticality Mass Laboratory

CHPRC crews continued work on the removal of the HO-200 glovebox, with the structure 90 percent removed and loadout of more TRU waste into SWBs expected next week. Preparations to begin cutting and removing slab tanks from the facility – the last major step before its downgrade to Less Than Hazard Category 3 – continued, with a mock-up of the tank lifting procedure completed this week.



Photo 13

Workers size reduce glovebox hood HO-200 in the 209-E Criticality Mass Laboratory. CHPRC is removing contaminated equipment and waste from the facility and preparing to downgrade the hazard level of the nuclear facility, with plans to demolish the facility later this year.

RL-0040.R1.2: Outer Zone D&D/Waste Sites

OUTER ZONE FACILITIES DEMOLISHED WITH RECOVERY ACT FUNDS

212N Storage Building	6652M Fallout Laboratory
212P Electrical Storage & Transformer Shop	6652R Acid Storage Shed
212R Storage Building	6652C Space Science Laboratory
614 Monitor Station	6652CSHED Storage Building
646 Radioecology Field Laboratory	6652D Pump House
6652G ALE Field Storage Building	6652T Fire Protection Lower Pump House
6652H ALE Laboratory 1	6652U Rattlesnake Mountain Upper Pump House
6652I ALE Headquarters	623A Plant Radio Relay Bldg
6652J ALE Laboratory II	T520-6 Navy MARS Radio Station
6652S Sentry Shed*	6631 Radio Telescope Pedestal*
6634 ENW Tower and Building*	6630 Hodges Well Pumphouse*
6635 Crown Castle/Cingular Tower and Building*	6636 Columbia Communication Tower and Building*
6637 Tri City Amateur Radio Tower and Building*	6633 Franklin County Communication Building*
6632 Verizon Telephone Enclosure*	

*Not part of the Key Performance Parameter

North Slope Debris Removal

Personnel with CHPRC subcontractor Sealaska Environmental Services have completed cleanup of all debris sites in Areas 12 and 15 of the Hanford Reserve National Monument. Work is ongoing in Area 18.

Arid Lands Ecology Reserve

Revegetation of cleared sites on ALE is ongoing while closure documentation for removal of facilities from the area is prepared.

D&D of Railcars Located on the 212-R Rail Spur

CHPRC crews began adding dry grout to two of the cask-and-well cars and continued redistributing contaminated water among two other cars. Preparations continued for the delivery of two locomotives to the B Reactor museum site for preservation and display.

Waste Sites

The following table showcases CHPRC's recent progress in outer zone waste remediation.

WASTE SITE IN PROGRESS	TONS OF CONTAMINATED SOIL REMOVED	
	<i>Week Ending Mar. 25, 2011</i>	<i>Total to Date with Recovery Act funds</i>
200-W-147-PL	-	6,450
BC Control Area	7,000	360,000

Recent activities regarding the outer zone waste sites also included (listed by operable unit or site):

- 600-40: Additional sample testing is required and is anticipated to occur in April.
- 600-218: Remediation activities are in process. Completion is anticipated next week.
- 600-220: A Baseline Change Request has been approved by the Change Control Board to authorize retrieve, treat, and disposal (RTD) activities. A work package is in preparation with remediation anticipated in mid-April. A culture report is being reviewed and is anticipated to be approved in March/April.
- 600-281: A cultural report is being reviewed and anticipated to be approved in April.
- 216-S-19: Direct push test sampling is complete. Preliminary results are being reported from the laboratory and are under review.
- 216-S-26: Contractor mobilization is complete; excavation commenced with 50 percent of overburden removed and staged. Shipping to ERDF will commence after completion of the ongoing contract Department of Transportation vendor evaluation.
- 200-W-147-PL: Post-verification sampling is complete; laboratory analysis of results is in process.
- *BC Control Area*
 - Altogether, approximately 140 acres of Zone A have been remediated with ongoing removal of hot spots. Seeding of 140 acres is also complete, performed by CHPRC and subcontractors Wildlands Inc. and Ojeda Business Ventures LLC.



Photo 14

Part of the BC Control Area after revegetation. CHPRC worked with subcontractors Wildlands Inc. and Ojeda Business Ventures LLC to spread seed and mulch across 140 remediated acres of the waste site.

RL-0041 Nuclear Facility D&D – River Corridor Closure Project

RL-0041.R1.1: 100K Area Remediation

100K AREA FACILITIES DEMOLISHED WITH RECOVERY ACT FUNDS

- 183KW Chlorine Vault
- 183.1KW Headhouse
- 183.3KW Filter Basin
- 183.7 KW Pipe Tunnel
- 110KE Gas Storage Facility
- 116KE Reactor Exhaust Stack
- 118KE Horizontal Control Rod Storage
- MO048 Construction Lunch Trailer
- MO969 Ops/HPT Change Trailer
- 115KE Gas Recirculation

PLANNED FOR D&D/IN PROGRESS

- 183.4KW Clearwell
- 190KW Main Pump House
- 183.4KE Clearwell
- 181KE River Pump House
- 117KE Exhaust Air Filter (subgrade structures)
- 190KE Main Pump House
- 1605KE Guard House

Facility D&D

Demolition and loadout of the 100-K-56 tunnel at the reactor’s north-west corner is in progress. At the 181-KE River Pumphouse Structure, construction and final seal testing of the containment for asbestos abatement is complete; abatement is scheduled to begin next week. CHPRC subcontractor Watts Construction crews continued hauling clean rubble from the demolished 183-KW Sedimentation Basins to U Canyon and returning with clean soil to use as backfill for the sedimentation basin site.

Draining of the 183.2-KE Sedimentation Basins in preparation for their demolition neared completion this week, with Basins 2-6 drained and crews using small submersible pumps to drain off the last residual

water from Basin 7. (The six basins are numbered 2-7.) Draining of the 183.4-KE and 183.4-KW Clearwells, which held a combined 36 million gallons of water, is complete. Demolition of the two 120,000-square-foot, below-ground facilities is expected to begin next week.



Photo 15

CHPRC is demolishing the 100-K-56 tunnel at the north-west corner of the K East Reactor building.

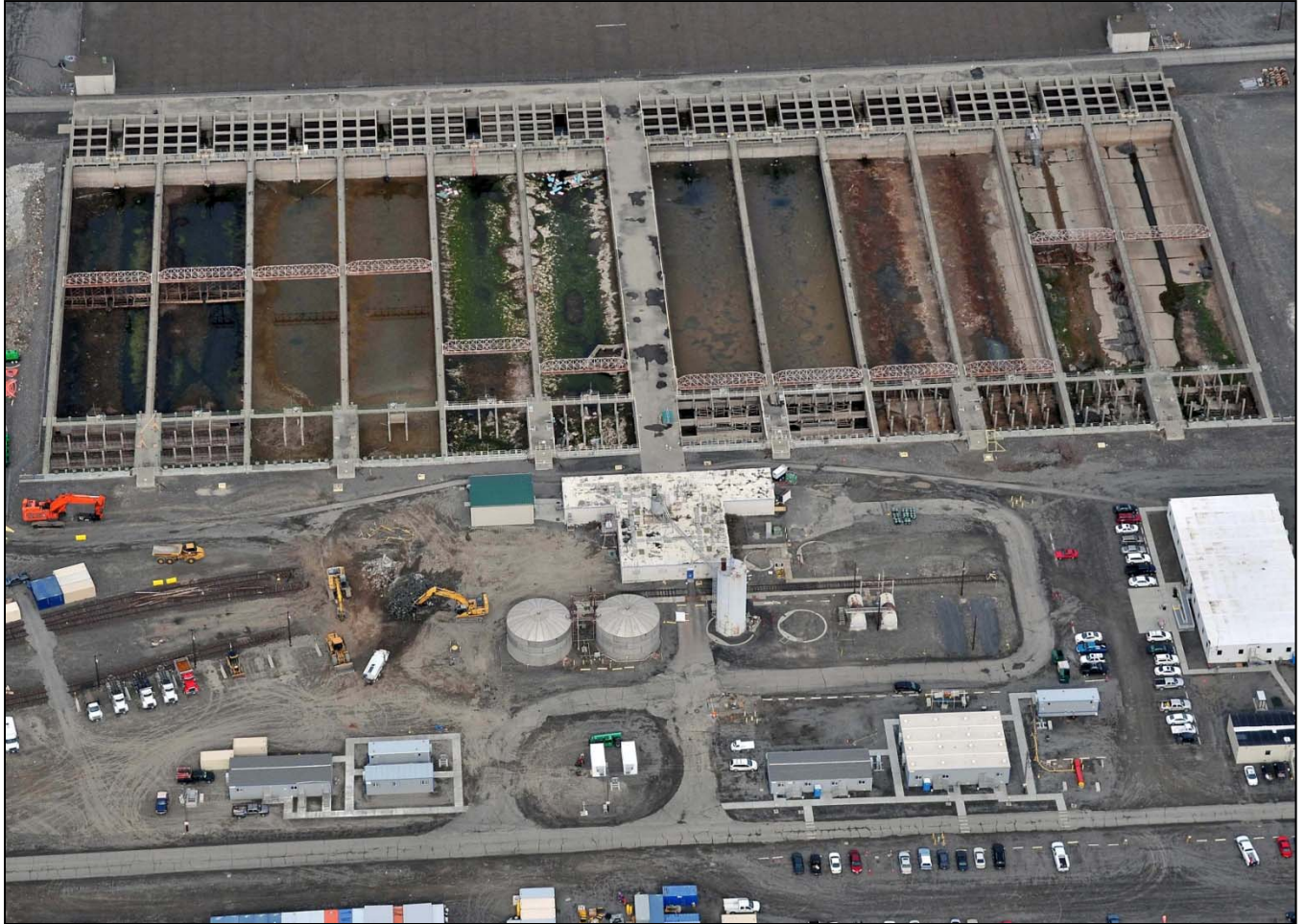


Photo 16

An aerial of the 183-KE Sedimentation Basins, where CHPRC is nearly finished draining approximately 13 million gallons of water. The basins are similar to the 183-KW Sedimentation Basins that CHPRC demolished in 2010.

Infrastructure Utilities Upgrade Project

Final staging of equipment and facilities for the full-time operations crew at the new 100K Water Treatment Facility are in progress, as preparations for super-chlorination of the new potable-water system continued. The new 100K fire-protection system is now complete and fully operational, and new control power transformers have been installed at the A-9 substation.



Photo 17

Equipment is staged for full-time operations soon to begin at the newly constructed Water Treatment Facility in the 100K Area. The Water Treatment Facility was constructed with Recovery Act funds to allow the existing system and connecting facilities to be demolished.

Waste Sites

CHPRC continued excavating the 100-K-53 waste site, the 100-KE Glycol Heat Recovery Underground Pipelines, with more than 7,100 tons removed from the waste site in March and a total of nearly 10,500 removed to date. At the 116-KE-1 RTD waste site, three locations were sampled on March 25, 2011; waste site remediation is on hold pending sample results that are intended to provide data to develop a clear path forward for completing this waste site.

UPCOMING EVENTS

RL-0011 Nuclear Materials Stabilization & Disposition

RL-0011.R1: Plutonium Finishing Plant D&D

- Complete size reduction of glovebox HA-22B.
- Isolate the last glovebox in the Analytical Laboratory and stage it for removal.
- Complete D&D and remove eight of the nine gloveboxes from room 179 of the PPSL.
- Complete cleanout and remove glovebox 188-1 from the PPSL.
- Remove conveyor gloveboxes HC-3 and HC-4 in the RMC Line.
- Remove gloveboxes HA-19B1 and B2 from room 235-B of the RMA Line.

- Prepare the three gloveboxes remaining in room 235-D for disposition in place.
- Complete cleanout of the 232 scrubber cell and disposition glovebox HA-46 in place.
- Remove exhaust duct work, complete Cold & Dark isolations, and prepare the 2736-Z vault complex for demolition.
- Continue removing process vacuum, process transfer piping, and asbestos insulation from throughout 234-5Z building.

RL-0013 Solid Waste Stabilization & Disposition

RL-0013C:R1.1: MLLW Treatment

- One MLLW shipment (6.37 m³) planned from CWC to IMPACT Services for recycling.

RL-0013C:R1.2: TRU Waste

- TRU Retrieval
 - 3A burial ground
 - Remove Boxes 23, 24, 25, and 26 from Trench 17.
 - Ship last three Trench 8 RH culverts to CWC.
 - Complete mitigation of contamination and down-post the high contamination area around 3A Trench 17 Box 27.
 - 4B/4C burial ground
 - Remove two concrete-lined CH drums and begin excavation around the 4B Trench 11 large concrete Box #105.
 - Begin excavation at the west end of 4B Trench 11 and continue excavating to uncover 11 metal containers (~32 m³).
 - Build and install internal securements for eight RH concrete boxes in the concrete-shielded overpacks and complete shipment preparations.
 - Install bolts on two RH 9 x 5 x 5 ft waste containers and complete shipment preparations.
 - Begin Mobile Drum Venting System preventive maintenance work packages and revise operating procedure SW-100-154 to incorporate a gas chromatograph.
 - 12B burial ground
 - Continue excavation, drum removal, and processing activities.
- TRU Repackaging and Shipments
 - Four planned shipments
- Suspect TRU Waste Shipments
 - Two TRU-mixed waste shipments (49.4 m³) planned from CWC to PFNW for repackaging.

RL-0030 Soil & Groundwater Remediation, Groundwater/Vadose Zone

RL-0030.R1: Central Plateau Soil & Groundwater

- Continue construction of the 200 West Groundwater Treatment Facility.
- Continue well drilling and decommissioning.

RL-0040 Nuclear Facility D&D – Remainder of Hanford

RL-0040.R1.1: U Plant/Other D&D

- Begin test pour of grout into the 221-U Canyon North Electrical Gallery.
- Continue demolition of the 284-E Power House and clean up debris at the sites of the 200 East and 200 W Areas demolitions.
- Complete size-reduction and remove glovebox HO-200, and loadout TRU waste at the 209-E Criticality Mass Laboratory.

RL-0040.R1.2: Outer Zone D&D/Waste Sites

- Continue debris removal on the North Slope.
- Continue revegetating cleared sites on the ALE Reserve.
- Continue adding dry grout to contaminated well railcars.
- Perform additional sample testing of the 600-40 waste site.
- Complete remediation of the 600-218 waste site.

RL-0041 Nuclear Facility D&D – River Corridor Closure Project**RL-0041.R1.1: 100K Area Remediation**

- Complete draining of 183-KE Sedimentation Basins.
- Begin demolition of 183.4-KE and 183.4-KW Clearwells.
- Continue D&D of substructure around 105KE Reactor Building.
- Complete preparations for super-chlorination of the new 100K potable water system.
- Continue excavating soil from and planning for remediation of 100K Area waste sites.