



River Corridor Closure Project

Recovery Act Weekly Report

September 29, 2009

Contract DE-AC06-05RL14655

Protecting the Columbia River

Overview

Background Summary of Projects that Washington Closure Hanford (WCH) will accomplish using ARRA funds (Pending definitization of scope and contract modifications).

A. The Environmental Remediation Disposal Facility (ERDF)

ERDF is the hub of the WCH contract and Other Hanford Contractors (OHC). Wastes collected from sites around the Hanford complex are brought to ERDF for treatment and disposal. WCH operates the ERDF and is currently using ARRA funds to upgrade and expand its capabilities to meet the needs of Hanford's accelerating mission. This report will provide written and visual evidence, weekly, of this expansion as it happens.

B. The 618-10 Burial Grounds

Long regarded as one of Hanford's worst waste sites are the trenches in 618-10. Using ARRA funds, WCH will characterize the site. Intrusive and non-intrusive techniques will be used, and the subsequent analysis of data will enable the project to pursue remediation of the site safely and effectively.

C. The 618-11 Burial Grounds

Along with 618-10, the 618-11 burial grounds are among the biggest challenges faced by WCH using ARRA funds. The 618-11 characterization work will require special care because of its proximity to the Energy Northwest Generating Facility, north of the 300 Area.

D. Remediation of failed Orphan Sites

WCH is employing ARRA funds to clean up many failed Orphan Sites not originally part of its contract. Sites in the 100-F and IU 2&6 segments 1&2 are proposed for waste site remediation in the two year period starting in October 2009.

E. Confirmatory Sampling of other new sites

WCH is proposing to complete the early sampling process of 67 potential waste sites using ARRA funds.

The following figure illustrates the overall scope of WCH's ARRA projects.



Overview (Continued)

River Corridor Cleanup Completion

ARRA Scope

The 2015 Vision
Hanford Site Cleanup

67 new sites identified for confirmatory sampling

6 Orphan sites in Seg. 1

Road improvements to enhance ERDF transportation

Early completion of 13 sites allows 2011 closure of entire 100-F area

Non-intrusive characterization of 618-11

Pursue remediation of 618-10 trenches and confinement design

Non-intrusive and intrusive Characterization of 618-10

Closure of Seg. 2

Construction of new Super Cells 9&10

Acquisition of new and used equipment and facilities

Energy NW

300 Area

ERDF

B&C (IU2/IU6 Seg. 1)

D & H

N

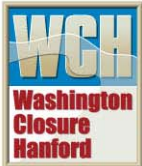
K

F (IU2/IU6 Seg. 4)

(IU2/IU6 Seg. 3)

618-11

618-10 (IU2/IU6 Seg. 5)



Safety

Safety Accomplishments

WCH has safely worked over 43K hours of ARRA scope through August 2009, with no safety incidents as of September 27, 2009.

Hazard Reductions

WCH's Safety Ownership Program (SOP) was launched as a tool for the RCC project to focus on safety values. Safe work principles are organized under four SOP tenets:

- Tenet 1: Follow the Instruction
- Tenet 2: Ask the Question
- Tenet 3: Fix it Now
- Tenet 4: Own the Result.

WCH continued awareness activities for the 3rd SOP Tenet; Fix it Now. This Tenet focuses attention on the importance of addressing issues and problems raised by the workers as they arise. Last week focus was on Guiding Principle of Tenet 3 – “Understand the problem.” The principle cautions against taking a hasty and undisciplined approach to fixing problems, stressing that the most obvious solution may not be the safest or the most effective. Activities and discussion include using the STAR process (Stop–Think–Act–Review) to guide workers in addressing problems in a safe and controlled manner:

STOP! Pause. Focus on the situation at hand and seek help and additional information to confirm or better understand the problem at hand.

THINK! Assess the information calmly. What are the greatest risks? Have I identified all the hazards? Are hazard controls in place? What resources are at my disposal? What options are available? Who needs to approve the next steps?

ACT! After you have thoughtfully determined a solution and have authorization to proceed, take appropriate action.

REVIEW! After implementation, review the solution to see if it truly resolves the issue.

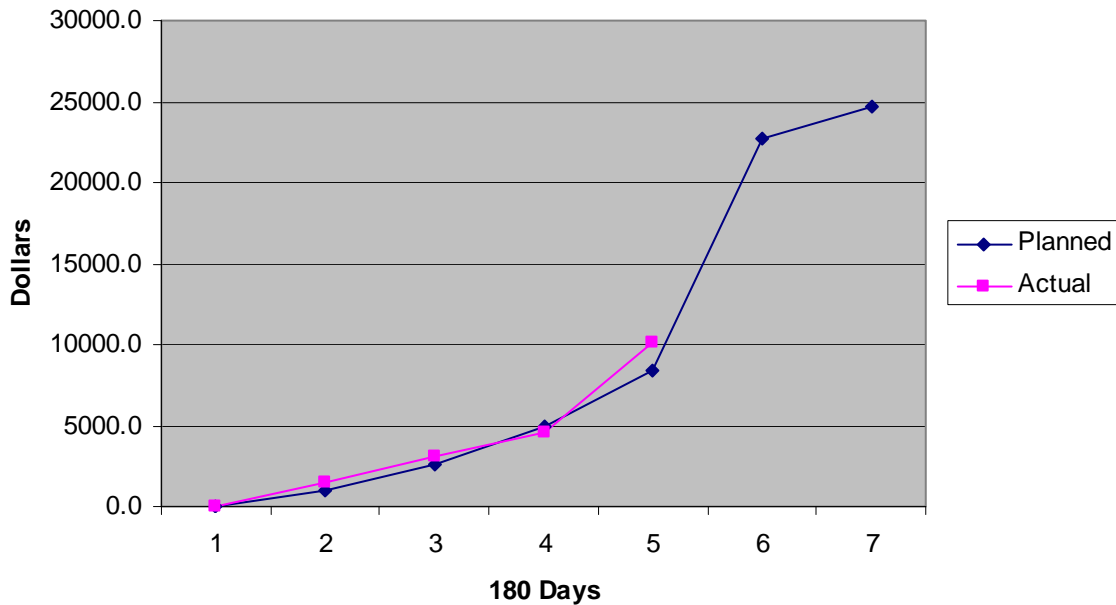


Cost

**180 Day Work Plan
Monthly Estimated Cost Plan Summary (K) Cumulative
Actuals as of August 23, 2009**

WBS	Scope		Apr 8th	May	Jun	Jul	Aug	Sep	Oct 8th
1.03.14.75.25-27	618-10 NIC/TRP	Planned	0.0	123.8	258.4	475.0	778.2	1466.6	1636.8
		Actual	0.0	392.4	648.1	1057.6	1873.4		
		Planned %			16%	29%	48%		
		Actual %			40%	65%	114%		
1.04.01.01.31	Super Cells 9&10 Construction	Planned	0.0	252.9	609.0	1498.1	2505.6	11582.5	12028.1
		Actual	0.0	753.9	1236.6	1633.8	3049.4		
		Planned %			5%	12%	21%		
		Actual %			10%	14%	25%		
1.04.01.01.37	ERDF Equipment Upgrades	Planned	0.0	0.0	0.0	0.0	0.0	1069.5	1515.1
		Actual	0.0	0.0	0.0	29.5	1909.7		
		Planned %			0%	0%	0%		
		Actual %			0%	2%	126%		
1.04.01.01.3B	ERDF Facility Upgrades	Planned	0.0	0.0	929.2	2191.0	4326.0	7774.7	8637.0
		Actual	0.0	0.0	509.8	861.0	2150.1		
		Planned %			11%	25%	50%		
		Actual %			6%	10%	25%		
1.06.01.01.02	Mission/General Support	Planned	40.3	571.5	766.7	778.7	791.5	809.1	813.5
		Actual	40.3	351.5	739.4	958.8	1141.1		
		Planned %			94%	96%	97%		
		Actual %			91%	118%	140%		
180 Day Work Plan	Total	Planned	40.3	948.2	2563.3	4942.8	8401.3	22702.4	24630.5
		Actual	40.3	1497.8	3133.9	4540.7	10123.6		
		Planned %			10%	20%	34%		
		Actual %			13%	18%	41%		

180 Day Work Plan (Planned vs Actual) Cumulative



WCH will report CPI and SPI at 1.00 until a contract modification approving the ARRA baseline is received and reconciled to the current baseline.



ERDF

Super Cells 9 and 10 Construction

Excavation of super cell 9 continues. The subcontractor has excavated 655,398 cubic yards (includes 263,913 cubic yards of stockpile removal) to date of the estimated 1.7 million cubic yards.

Construction continues on the north and south perimeter embankments of super cell 9, as well as preparation of the request for proposals to excavate super cell 10 and construct super cells 9 and 10, and installation of the new fence.

Upcoming Activities

- Continue excavation of super cell 9.
- Complete fence installation.
- Issue RFP for excavation of super cell 10 and construction of super cells 9 and 10.

Facility and Equipment Upgrades

The first of 150 waste containers arrived this week from Rule Steel of Caldwell, Idaho. Rule Steel will ship three containers per day through about mid-December.



New waste containers are inspected before being placed into service. These new containers hold up to 25 tons of low-level contaminated waste.

ERDF (Continued)



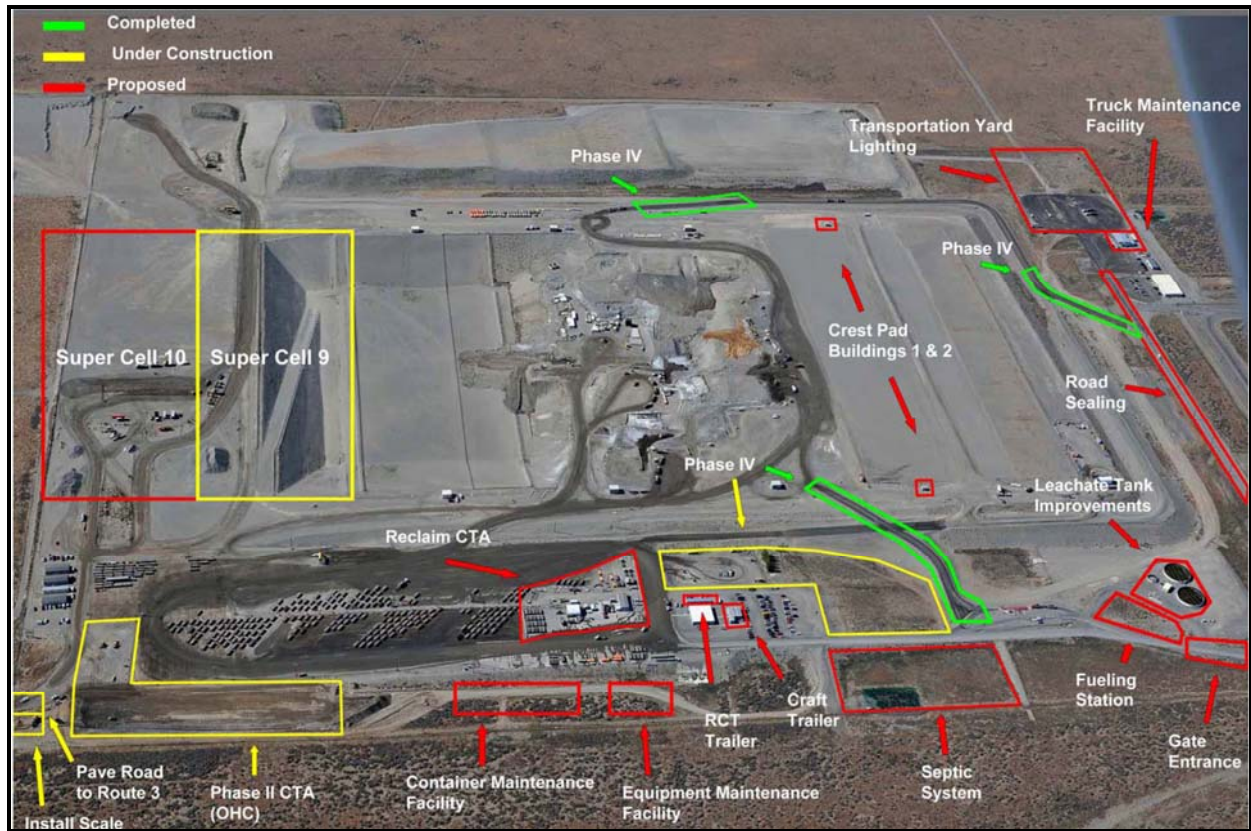
New container trucks arrived for service at Hanford's Environmental Restoration Disposal Facility.

The new ERDF access road was paved this week by local subcontractor Inland Asphalt Co. Work continues on electrical installation at the new access road. The new access road will help improve traffic safety at the facility.

Upcoming Activities

- Work on the scale continues.
- Receive first of four bulldozers.
- Continue construction of the container transfer area designated for other Hanford contractors.
- Continue construction of the new ERDF access road.

ERDF (Continued)



Local media representatives visited Hanford's Environmental Restoration Disposal Facility this week to view the \$100 million in expansion and upgrade projects underway at the facility.

Video

[Click here to view the video of the ERDF media event and access road paving.](#)

618-10 Burial Ground

618-10 Non-Intrusive Characterization/Trench Remediation Project

A demonstration of the cone penetrometers installation was performed this week by North Wind Inc., which will be installing the cone penetrometers around the vertical pipe units (VPUs) and in the trenches. Installation of four cone penetrometers around each of the 94 VPUs will begin in a couple of weeks and continue through about mid-December. Radiological characterization of the VPUs will be performed concurrently with the cone penetrometer installation.



Workers demonstrate installation of cone penetrometers as part of the project start-up review for the 618-10 Burial Ground non-intrusive testing. Two machines will drive four cone penetrometers around 94 vertical pipe units and will complete their work early next year.

618-10 Burial Ground (Continued)



Cone penetrometers, or steel tubes, will be driven about 27 feet into the soil around each vertical pipe unit. Instrumentation will be lowered into each penetrometer to radiologically characterize the contents of each vertical pipe unit.

618-10 Burial Ground (Continued)

As part of the project start-up review for installation of the cone penetrometers, an emergency drill was held at the 618-10 Burial Ground to exercise Washington Closure Hanford responses to potential emergency and accident scenarios at the site.



Washington Closure Hanford and North Wind employees participated in an emergency drill at the 618-10 Burial Ground this week. This is the first emergency drill held at the field office and is part of the project start-up review for the non-intrusive testing.



618-10 Burial Ground (Continued)

Upcoming Activities

- Conduct demonstration of locating the center point of the VPUs
- Complete radiological characterization project startup review activities.
- Begin installation of cone penetrometers.
- Continue review and approval of subcontractor submittals.
- Continue work onsite mobilization activities.
- Conduct value engineering to determine if a confinement structure is needed to support intrusive characterization or remediation of the trenches or VPUs.

Mission Support/General Support

Accomplishments

- WCH continued preparation and comment resolution/incorporation of the final of the Phase II Technical and Cost Proposal, and supported the preparation of ARRA contract negotiations.
- WCH continued work on finalizing the *Vision 2015 Roadmap* and incorporating it into FY10 and FY11 Contractor Performance Planning to support the Department of Energy's goal reducing the site clean-up footprint.

Upcoming Events

- Submit the ARRA Phase II Technical and Cost Proposal and support DOE in completing the ARRA contract-modification negotiations by the end of September.
- Continue to work on finalizing the Vision 2015 Roadmap for planned issuance October 2009.
- Finalize negotiations for Phase 1 ARRA scope and costs.
- Get DOE-RL approval to begin spending on Phase 2 scope.



General

Job Fairs

Refer to the EM Recovery Act Jobs Data Call spreadsheet for Jobs Creation/Saved as of September 18, 2009.

Hiring Actions

Jobs Created as of 9-18-09

	Subcontractors	ROS	WCH	Total
Weekly	2	0	0	2
Total To Date	116	8	20	144

Jobs created represent new lives touched by ARRA, and are not expressed in full-time equivalents (FTEs). Refer to the weekly EM Recovery Act Jobs Data Call spreadsheet for detailed report of Jobs Creation/Saved as of September 18, 2009.

Mentoring/Training

No significant mentoring activities this week.

Media, Visits, Press Releases

No significant media events this week.

Contracting Actions

- Request for Proposals sent out for paving the ERDF access road.
- Purchase Orders issued to convert leases by our subcontractor for CAT Loader, CAT telehandler, 12,000 gallon water tower, and CAT 320L excavator to purchases.
- Evaluating proposals for lean-to shed for the new scale house.
- Contract awarded for second D9T used Caterpillar dozer.
- Received first three 150 IP-1 containers.
- Contract awarded to convert three buildings currently on lease with Foothills to WCH.
- Contract issued to perform a test to prove Vertical Pipe Units can be located accurately.

