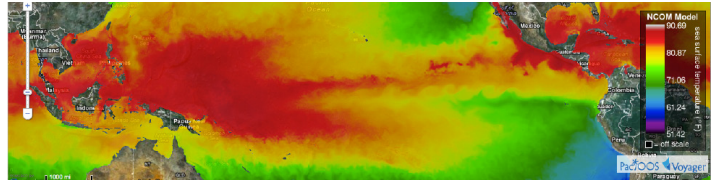




by observing we learn

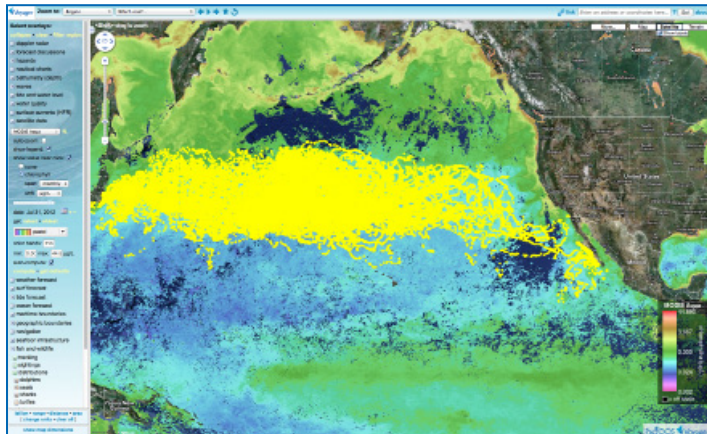


Voyager is a Free, Interactive Online Mapping Platform for the Pacific Islands

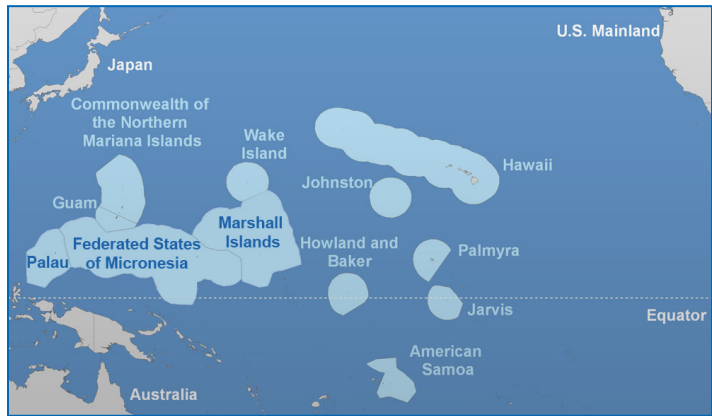
- **Audience:** Voyager is a great tool for resource managers, planners, policy makers, ocean users, harbor users, and the general public.
- **Data:** Voyager hosts an array of geospatial data. Overlays of recent, historical, and forecast data are available, and both dynamic and static data sets are included. PacIOOS welcomes user feedback on incorporating additional data.
- **Uses:** Voyager allows users to easily combine, view, download, and query thousands of data layers, serving as a decision-making portal throughout the Pacific Islands.

PacIOOS Voyager Highlights:

- Direct link at <http://pacioos.org/voyager>;
- Real-time and near real-time data layers available;
- Activate multiple spatial and/or point data layers;
- Save view of active layers with a quick, short URL;
- View time series plots for period of interest;
- Download data in multiple formats;
- Filter data overlays by region;
- Great for data visualization and decision-making; and
- No technical expertise required.



The map above was created in **PacIOOS Voyager** and illustrates species distribution of loggerhead turtles across the Pacific with an overlay of global chlorophyll data obtained from satellites.



Based within the School for Ocean and Earth Sciences and Technology (SOEST) at the University of Hawai'i at Mānoa, **PacIOOS** is the Pacific Islands regional component of the U.S. Integrated Ocean Observing System (IOOS®). PacIOOS is a partnership of data providers and users working together to enhance ocean observations and develop, disseminate, evaluate, and apply ocean data and information products designed to address the environmental, economic, and public safety needs of stakeholders who call the Pacific Islands home.

PacIOOS is located at the University of Hawai'i at Mānoa, 1680 East-West Road, POST 105, Honolulu, Hawai'i 96822.

Heather Kerkering, Director: (808) 956-8784, heather.kerkering@hawaii.edu

Melissa Iwamoto, Outreach and Program Coordinator: (808) 956-6556, melissa.iwamoto@hawaii.edu

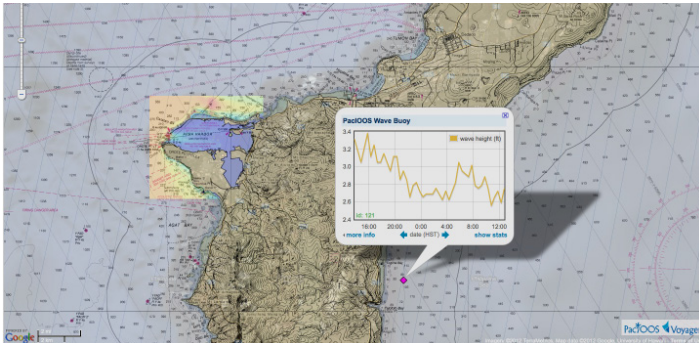
Jim Potemra, Data Management Lead: (808) 956-2737, jimp@hawaii.edu



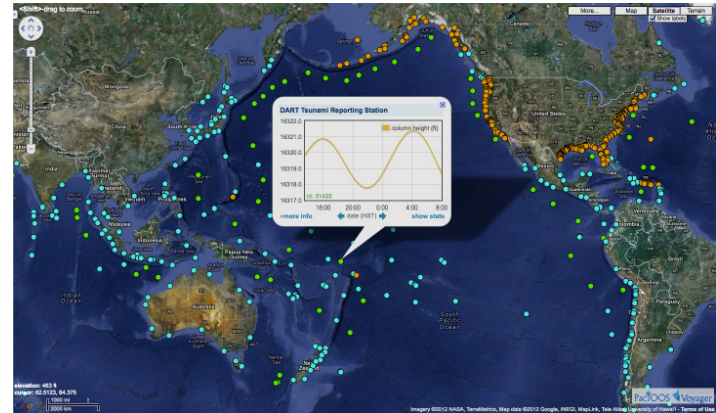
www.pacioos.org



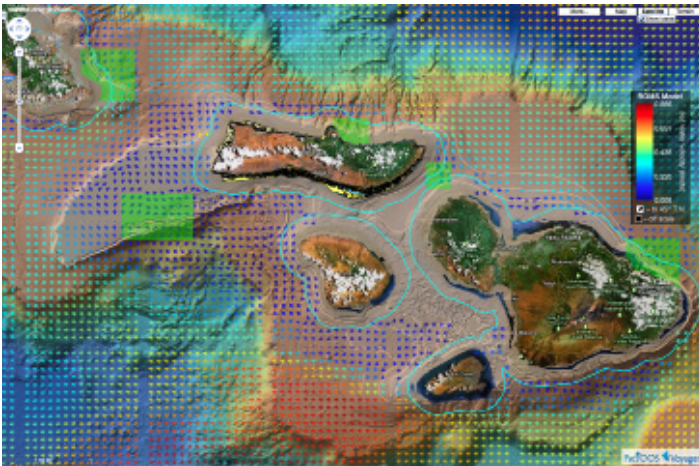
Example Maps



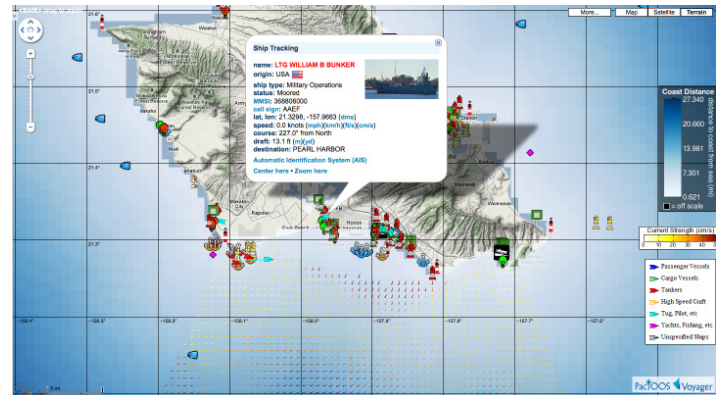
Navigation around Guam: NOAA nautical chart for Guam; SWAN wave model for Apra Harbor; PacIOOS real-time wave buoy



Water levels across the globe: tide and water level (DART Stations, IOC Stations, NOS Shore Stations)



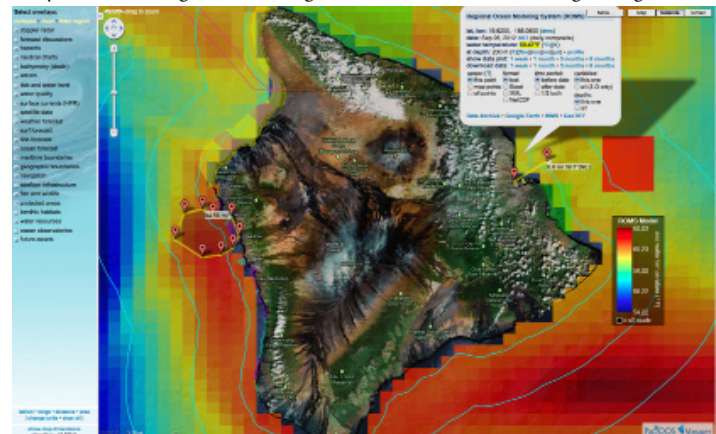
Bottom Fishing in Maui County: high resolution bathymetry; -200m, -300m, -400m contour lines; bottom fish protected areas; 3 nautical mile maritime boundary; ocean currents at 200m depth (from ROMS model); benthic geomorphology around Moloka'i



Boating around O'ahu: ship locations (AIS receivers); distance to coast from sea; real-time surface currents off the south shore of O'ahu; PacIOOS wave buoys; aids to navigation; boating facilities; FADs; latitude/longitude grid



The social side of the Pacific: Google Panoramio photos; webcams



Spatial planning around Hawai'i Island: ROMS showing model ocean temperature at -200m; protected areas; seafloor infrastructure; maritime boundaries; benthic geomorphology; length and area tools employed

