

VOOGO: A SEARCH TOOL FOR CLINICAL DATA

Qing Zeng-Treitler, Doug Redd

VA Salt Lake City

INTRODUCTION

- ▶ Increasing amount of data in clinical repositories
 - ▶ VINCI (30 million patients and 1.8 billion notes)
- ▶ Increasing need to direct access and analyze clinical
- ▶ Simple queries often result in high false positives and false negatives

VOOGO FEATURES

- ▶ Text and structured data search
- ▶ Multiple views of results
 - ▶ Summary
 - ▶ Patient
 - ▶ Document
- ▶ Query suggestion

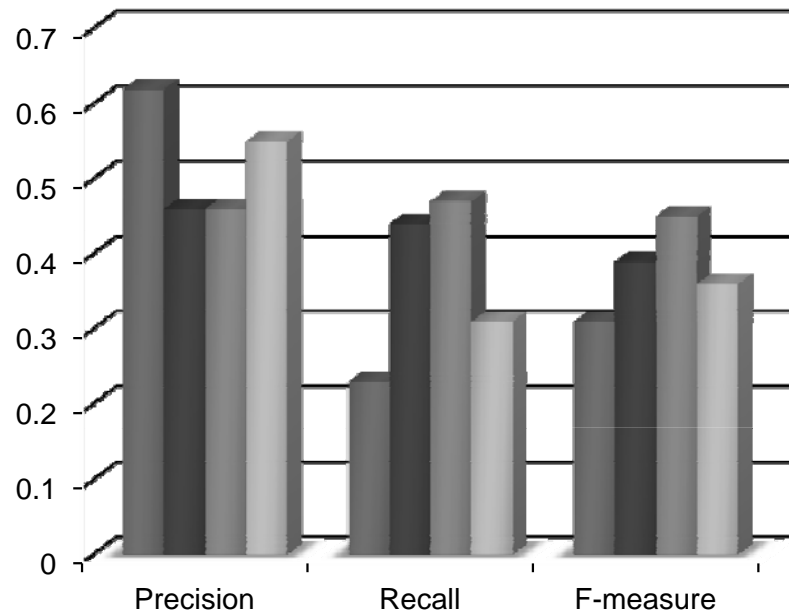
EVALUATION #1

- ▶ 300 notes from post- traumatic stress disorder (PTSD) patients
- ▶ 300 notes from diabetes mellitus (DM) patients
- ▶ 12 topics (e.g. suicide ideation, or diet/exercise)
- ▶ Clinician review
 - ▶ 0: Irrelevant, 1: Possibly relevant, and 2:Defintiely relevant

EVALUATION #1

- ▶ 19 queries
- ▶ 3 query expansion methods
- ▶ Baseline method: sum of TFIDF
- ▶ 4 performance measures
 - ▶ Precision (positive predictive value)
 - ▶ Recall (sensitivity)
 - ▶ F-measure (the harmonic mean of precision and recall)
 - ▶ P10 (top 10 ranked documents)

RESULTS

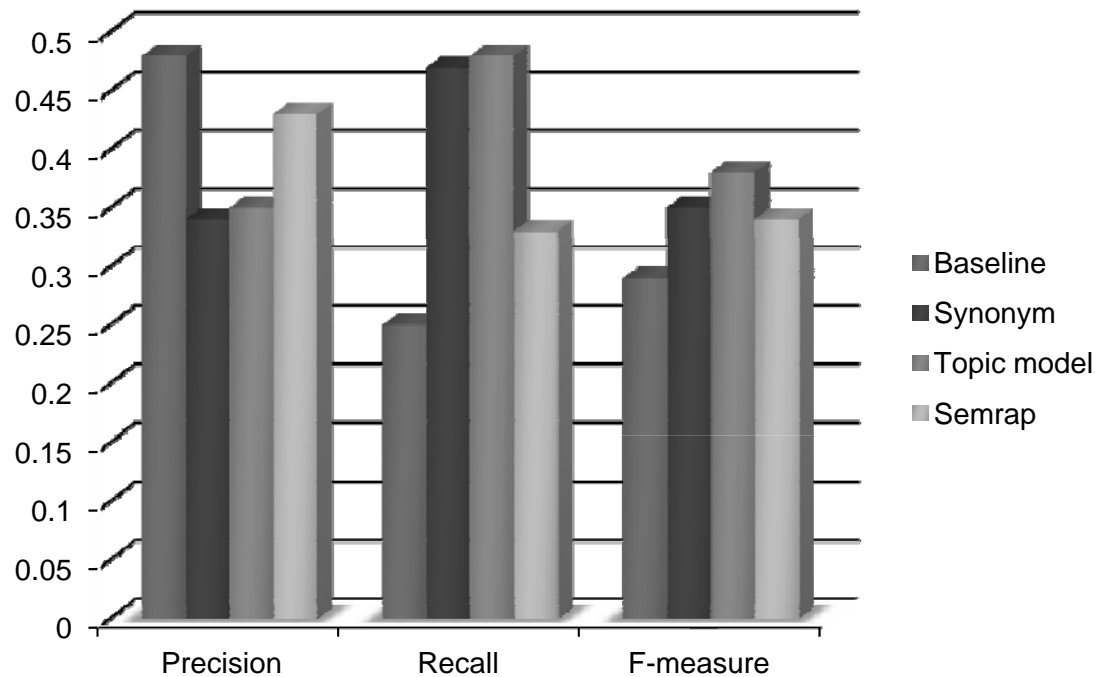


■ Baseline
■ Synonym
■ Topic model
■ Semrap

Treating Possibly Relevant
as Relevant

	Precision	Recall	F-measure
Baseline	0.62	0.23	0.31
Synonym	0.46	0.44	0.39
Topic model	0.46	0.47	0.45
SemRep	0.55	0.31	0.36

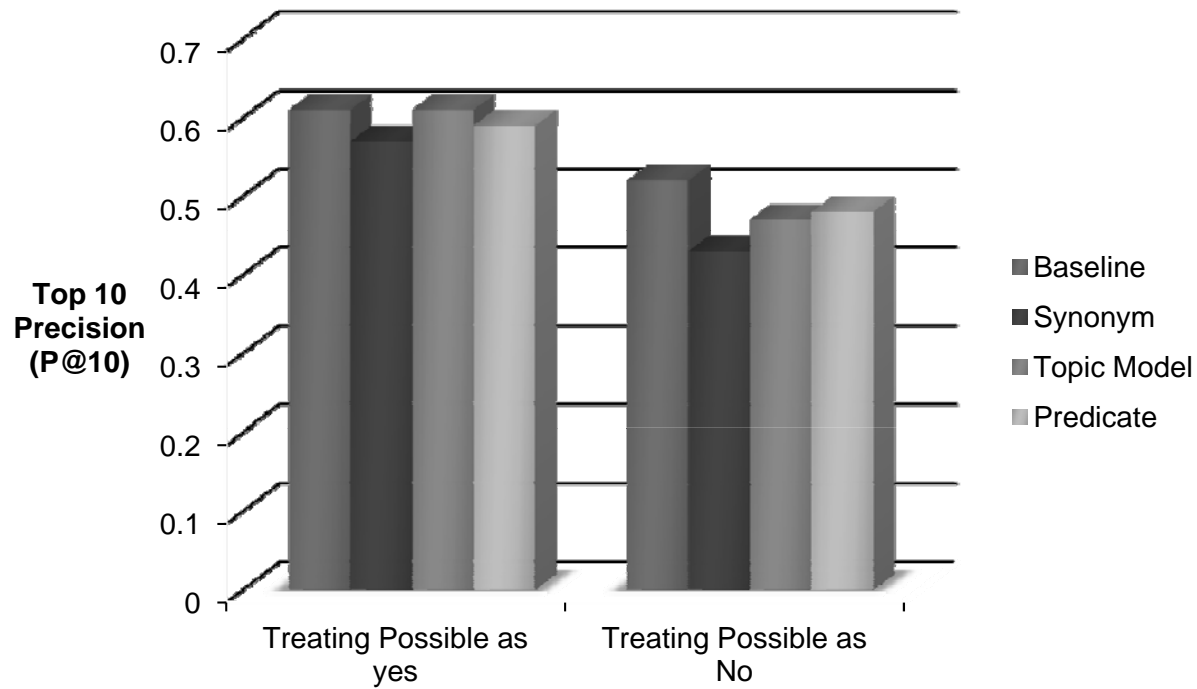
RESULTS



**Treating Possibly Relevant
as Irrelevant**

	Precision	Recall	F-measure
Baseline	0.48	0.25	0.29
Synonym	0.34	0.47	0.35
Topic model	0.35	0.48	0.38
SemRep	0.43	0.33	0.34

RESULTS

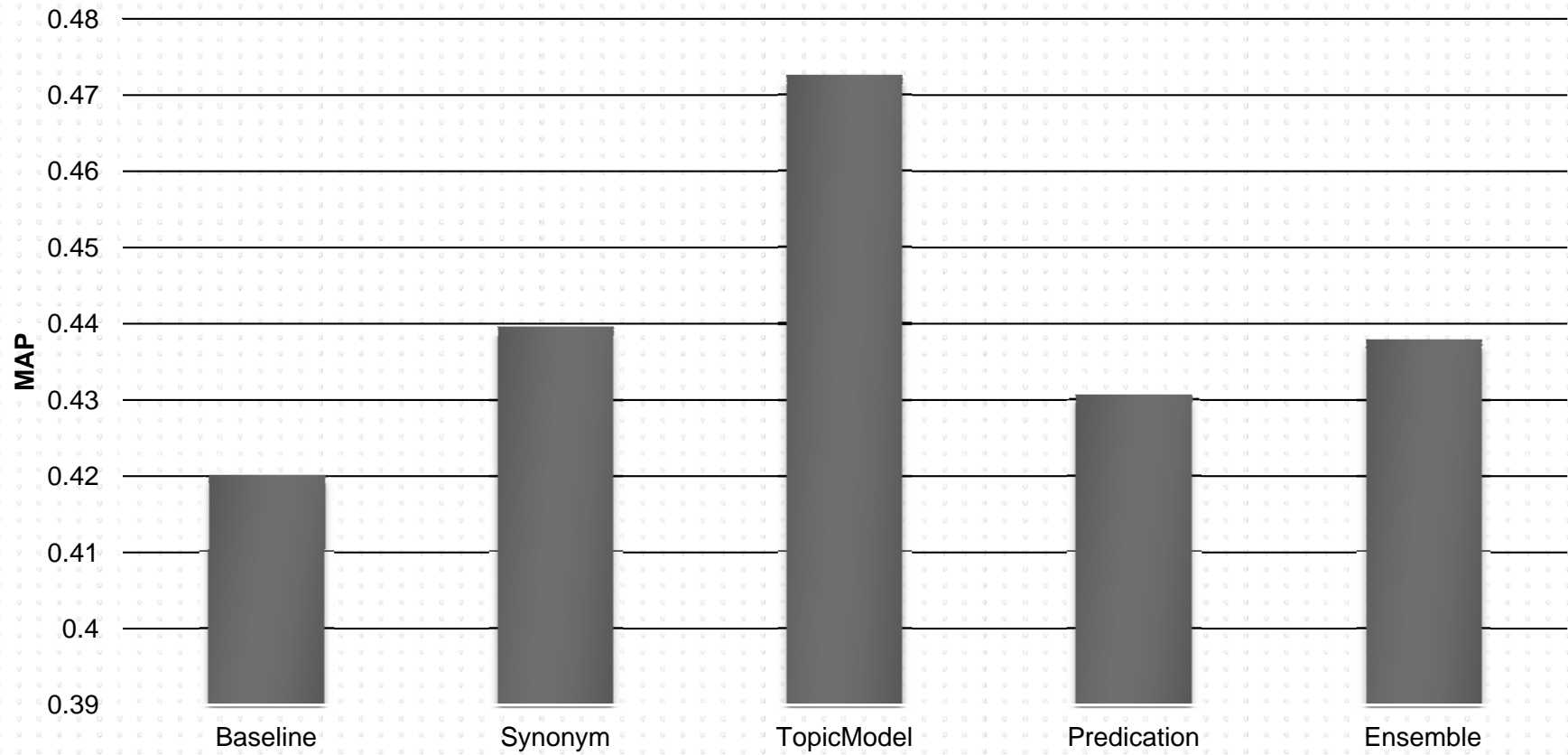


	Baseline	Synonym	Topic Model	Predicate
Treating Possible as yes	0.61	0.57	0.61	0.59
Treating Possible as No	0.52	0.43	0.47	0.48

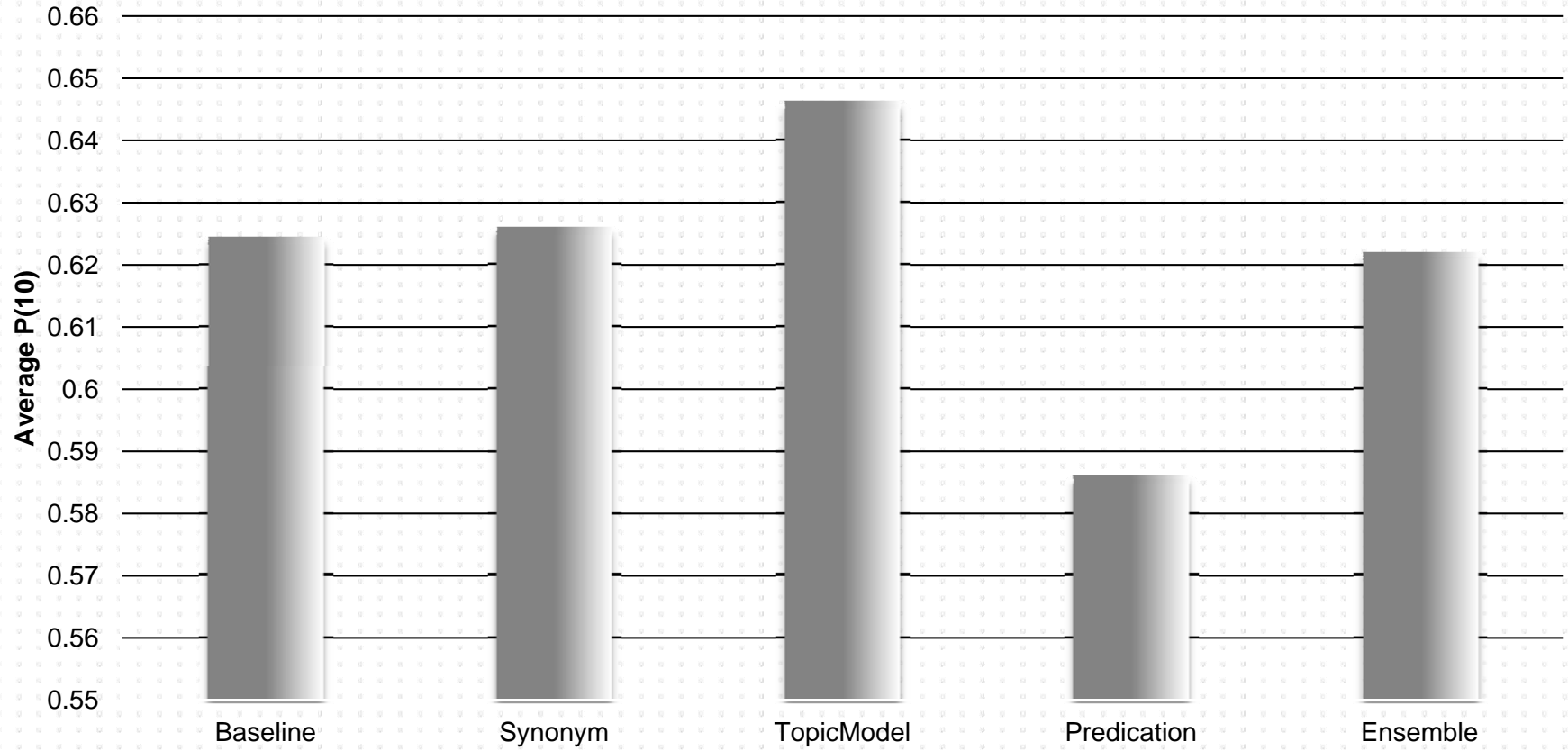
EVALUATION #2

- ▶ 19 queries
- ▶ 3 query expansion methods and one ensemble method
- ▶ Baseline method: sum of TFIDF
- ▶ 4 performance measures
 - ▶ MAP (Mean average precision)
 - ▶ P10

MEAN AVERAGE PRECISION



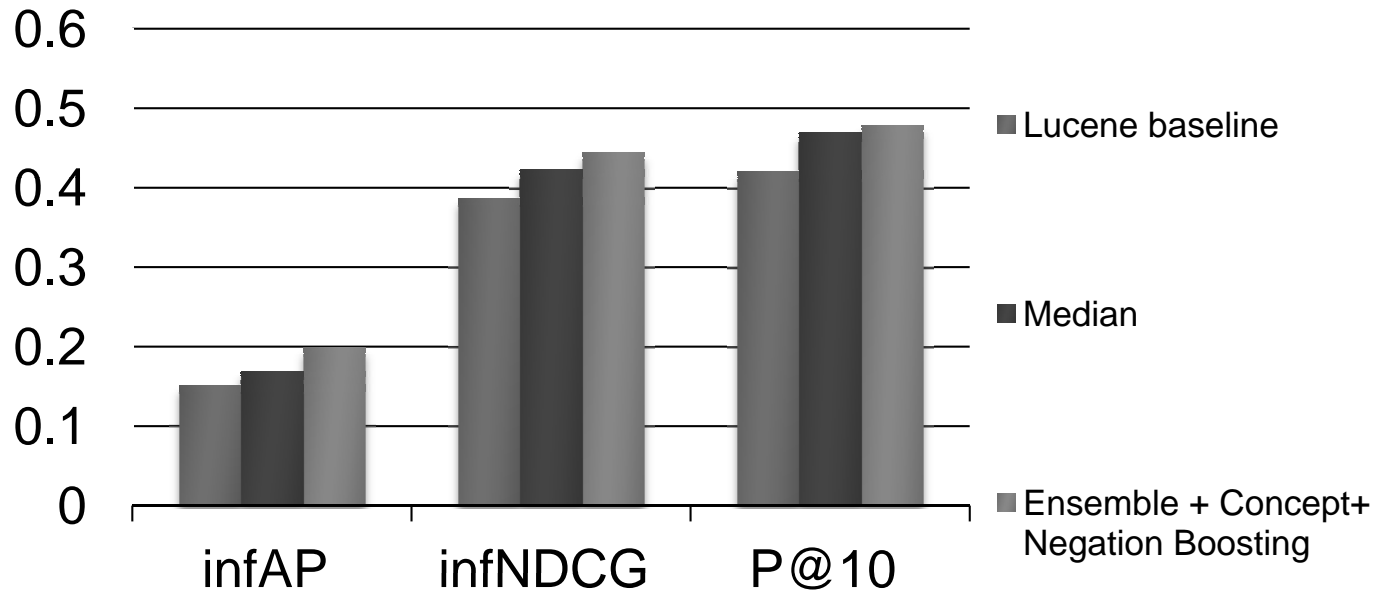
P10



EVALUATION #3

- ▶ 50 queries (TREC)
- ▶ 100k documents
- ▶ Expansion methods
- ▶ Concept indexing and negation filtering
- ▶ Baseline method: Lucene
- ▶ 4 performance measures
 - ▶ infAP (Inferred Average Precision)
 - ▶ infNDCG (Inferred Normalized Discounted Cumulated Gain)
 - ▶ R-prec (R-precision)
 - ▶ P10

RESULTS



	infAP	infNDCG	P@10
Lucene baseline	0.152	0.388	0.421
Median	0.170	0.424	0.470
Ensemble + Concept + Negation Boosting	0.200	0.445	0.479

FUTURE STEPS

- ▶ More structured fields
- ▶ Complex text criteria
- ▶ Temporal search support
- ▶ Concept indexing
- ▶ Intelligent Visual analytics

ACKNOWLEDGEMENT



This work is funded by VA grants CHIR HIR 08-374 and VINCI HIR-08-204.

CONTACT US

- ▶ Q.t.zeng@utah.edu
- ▶ Doug.redd@utah.edu