



# Team

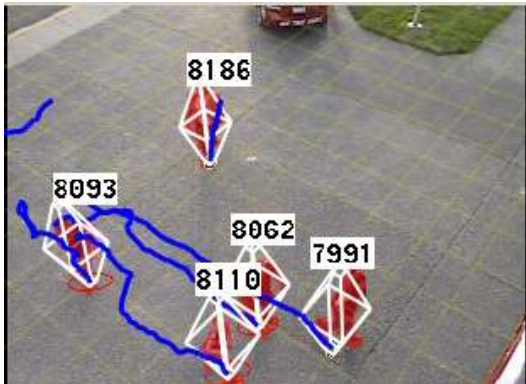
- Name of Organization(s): General Electric
- Lead Investigator: Peter Tu
- Current Team Members:
  - Gianfranco Doretto
  - Nils Krahnstoever
  - Thomas Sebastian
  - Xiaoming Liu
  - Dashan Gao





# General Capabilities

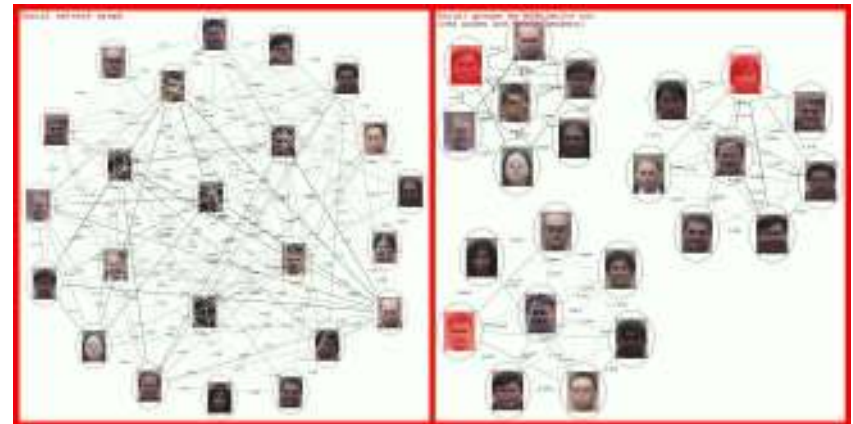
- Person detection and articulated motion analysis.
- Facial analysis for gaze and emotional cues
- Transfer learning in terms of object specific recognition.





# Specific Qualifications

- Person detection for uncalibrated and moving cameras.
- Discriminative methods for facial landmark positioning under noisy conditions.
- Articulated motion analysis based on classification of space time cues.





# Seeking Capabilities

- We seek capabilities associated with
  - Natural language processing
  - Frameworks associated with behavioral saliency
  - Domain specific knowledge and experience



# Contact Information

- Name: Peter Tu
- Title: Research Scientist
- Organization: General Electric
- Email address: [tu@crd.ge.com](mailto:tu@crd.ge.com)
- Phone number(s): 518-387-5838
- URL: <http://www.crd.ge.com/vision/>