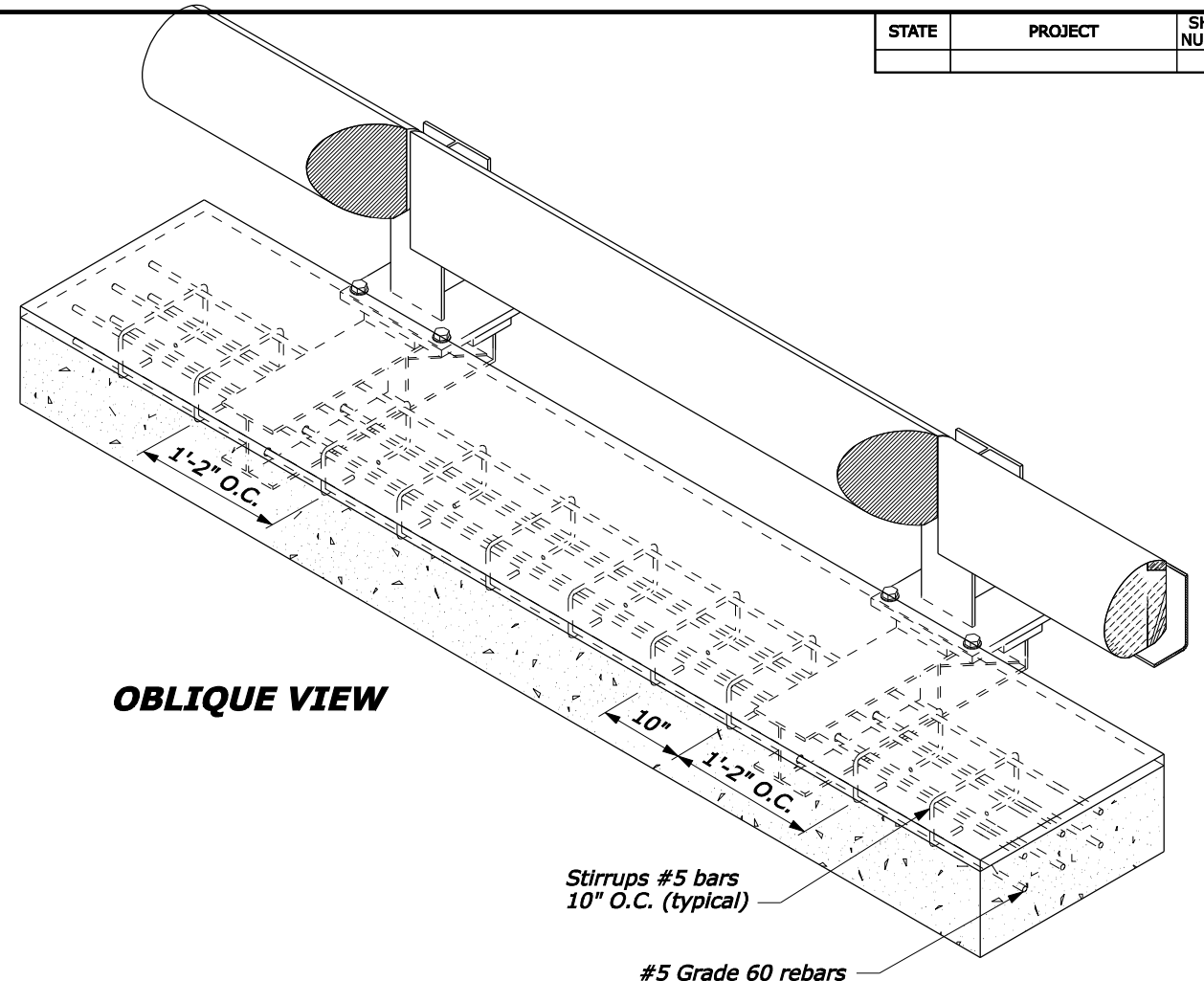
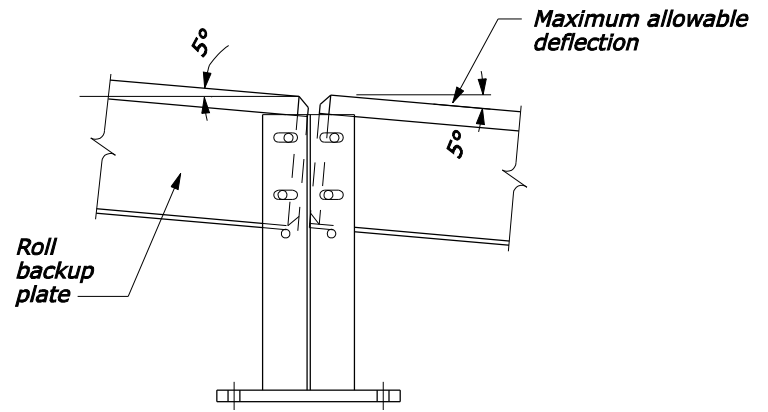


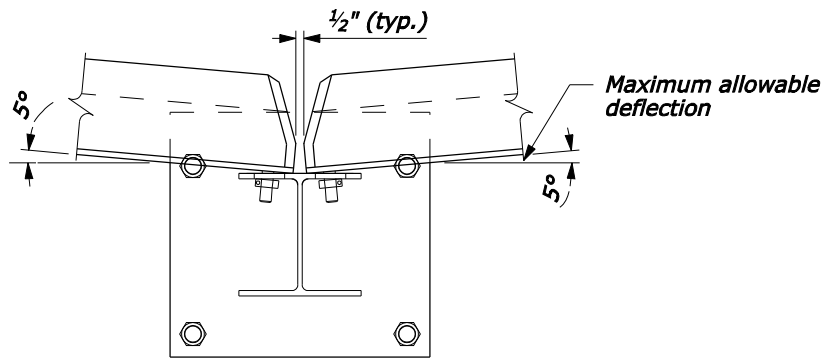
PLAN VIEW



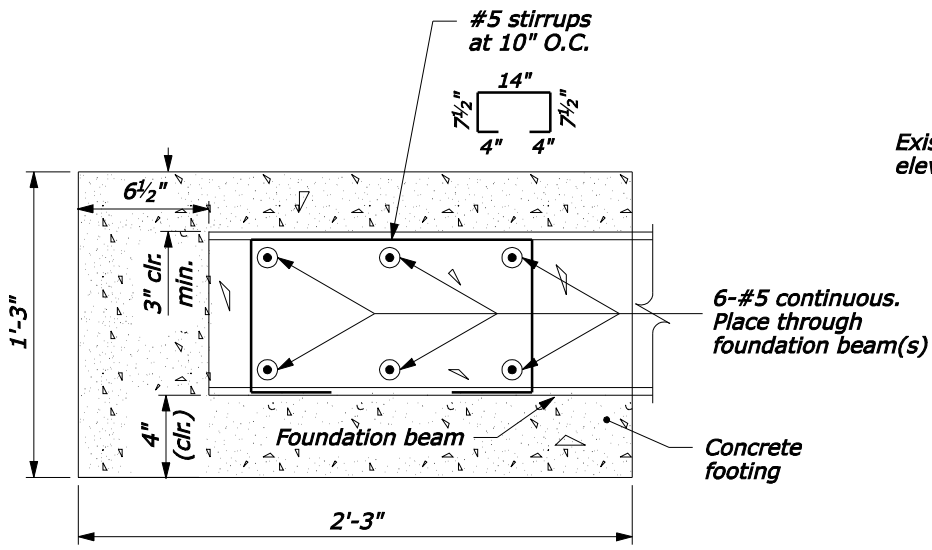
OBLIQUE VIEW



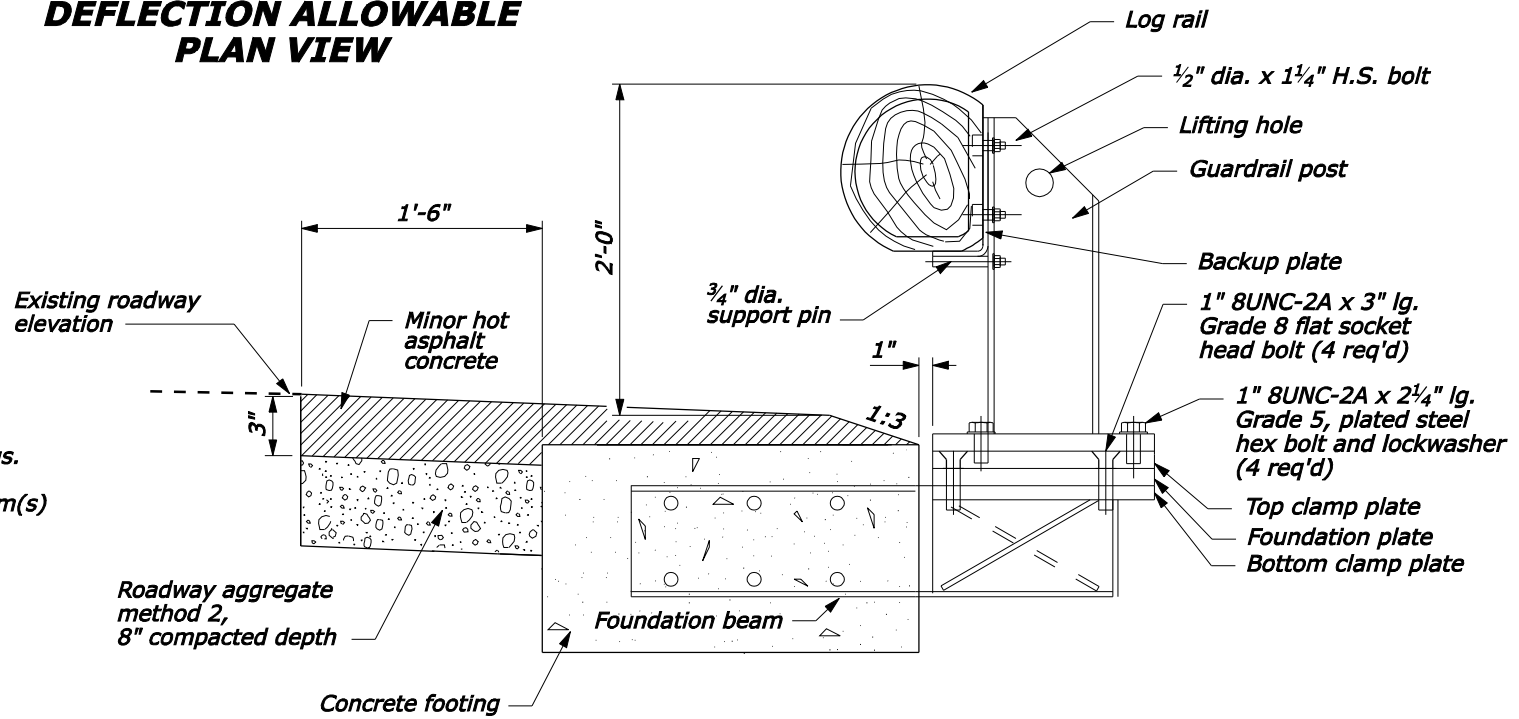
ENDS OF RAILS AT POST:
MAXIMUM VERTICAL
DEFLECTION ALLOWABLE
ELEVATION



MAXIMUM HORIZONTAL
DEFLECTION ALLOWABLE
PLAN VIEW



FOOTING DETAIL
TYPICAL SECTION



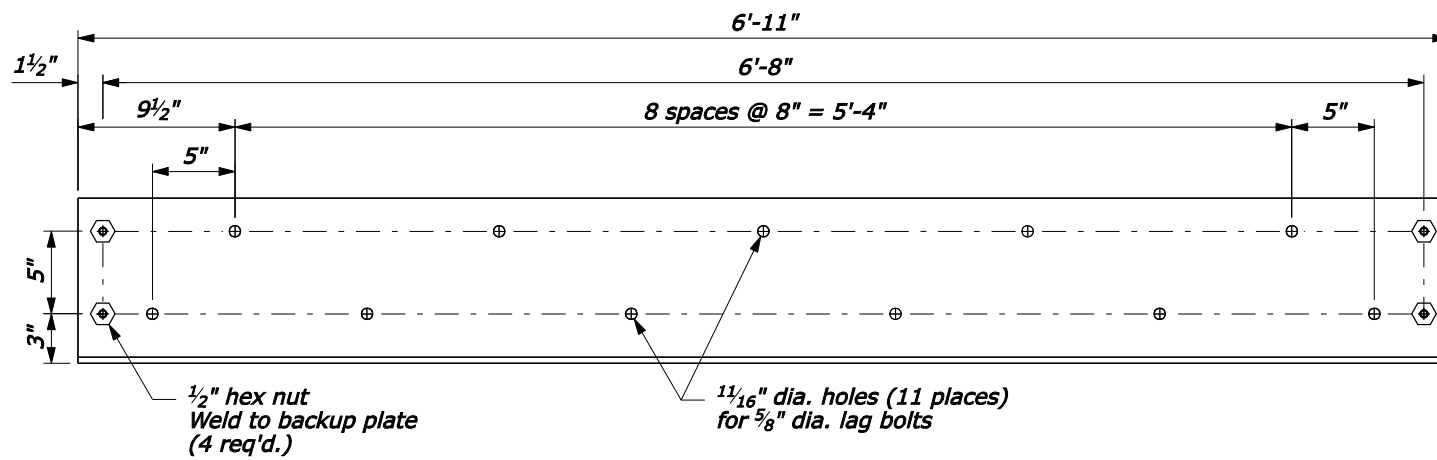
TYPICAL SECTION

- NOTE:**
1. Steel is ASTM A242, Grade 50.
 2. Concrete: minimum $f_c' = 3500$ psi.

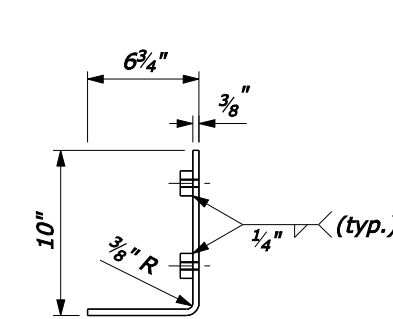
NO SCALE

U.S. DEPARTMENT OF TRANSPORTATION FEDERAL HIGHWAY ADMINISTRATION WESTERN FEDERAL LANDS HIGHWAY DIVISION	
U.S. CUSTOMARY DETAIL	
REMOVABLE STEEL LOG RAIL SHEET 1 OF 3	
DETAIL APPROVED FOR USE --/---	DETAIL 617-83
REVISED:	
DRAFT: 3/2005	

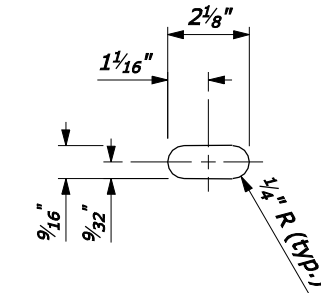
F:\Bridge\Projects\MTGLAC-GTSSR\RemovableRail\w61783.dgn



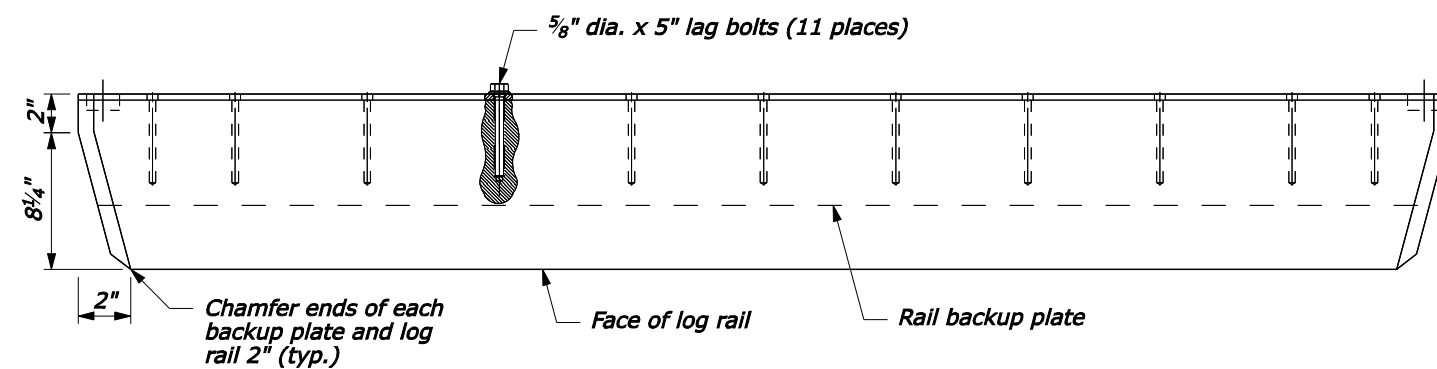
**RAIL BACKUP PLATE
ELEVATION VIEW**



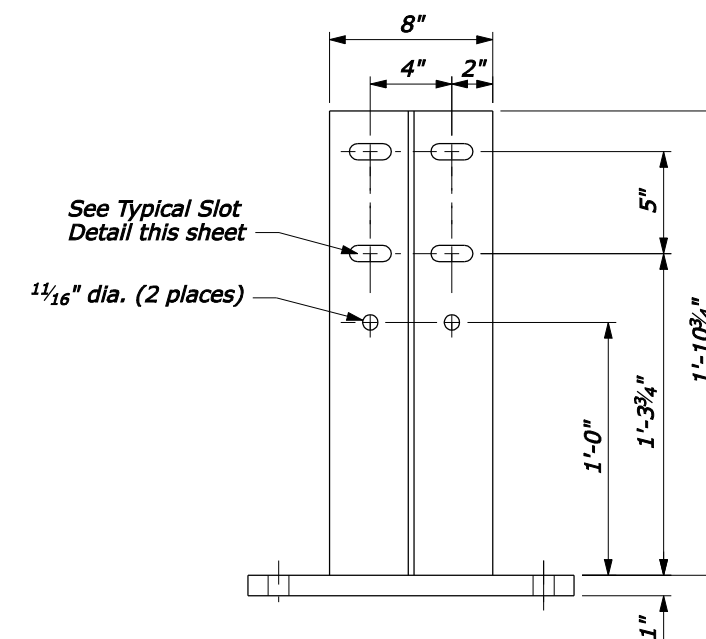
**RAIL BACKUP PLATE
SECTION VIEW**



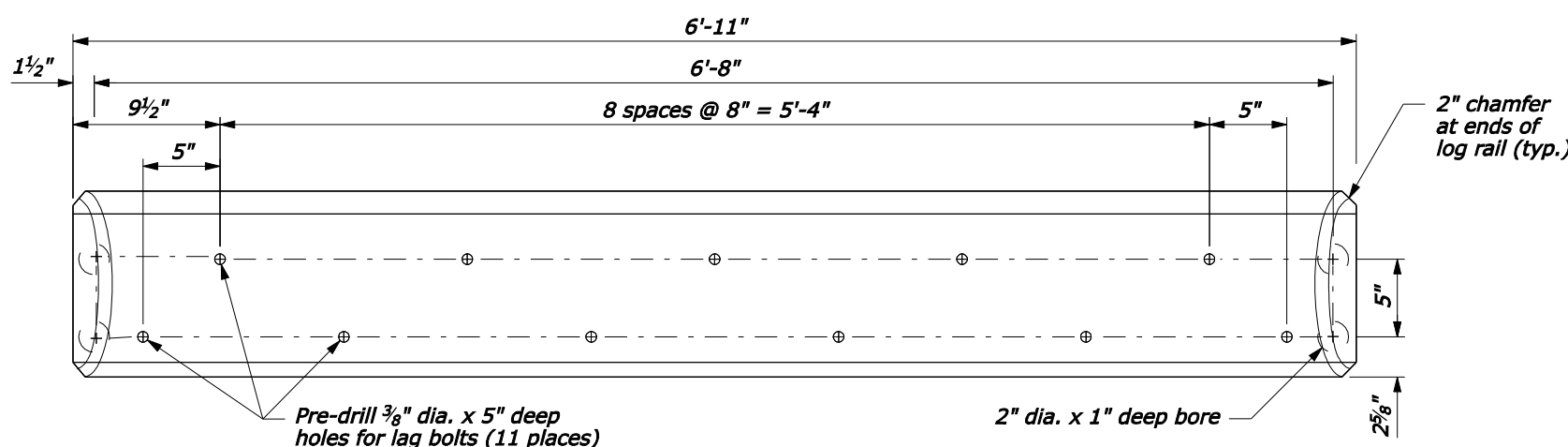
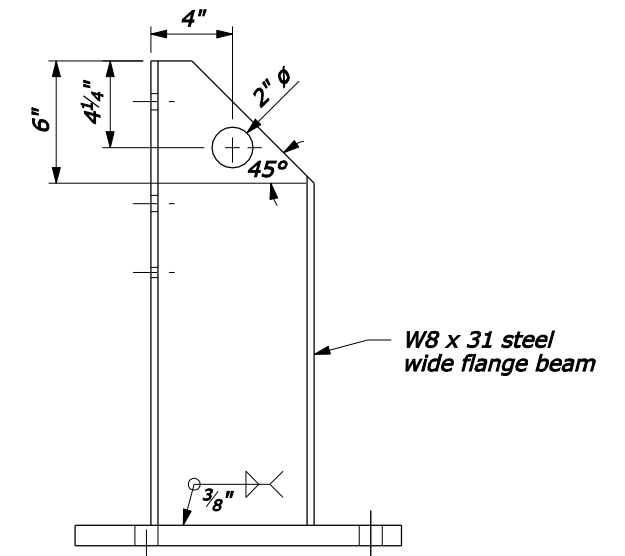
TYPICAL SLOT DETAIL



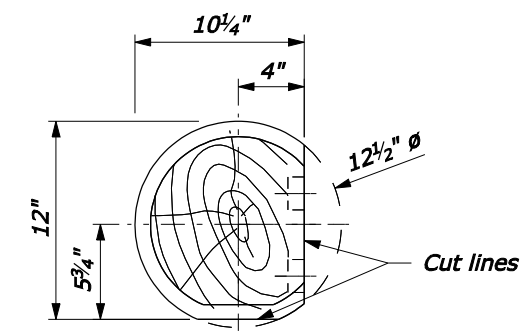
**LOG RAIL & RAIL BACKUP PLATE
PLAN VIEW**



GUARDRAIL POST



**LOG RAIL
ELEVATION VIEW**

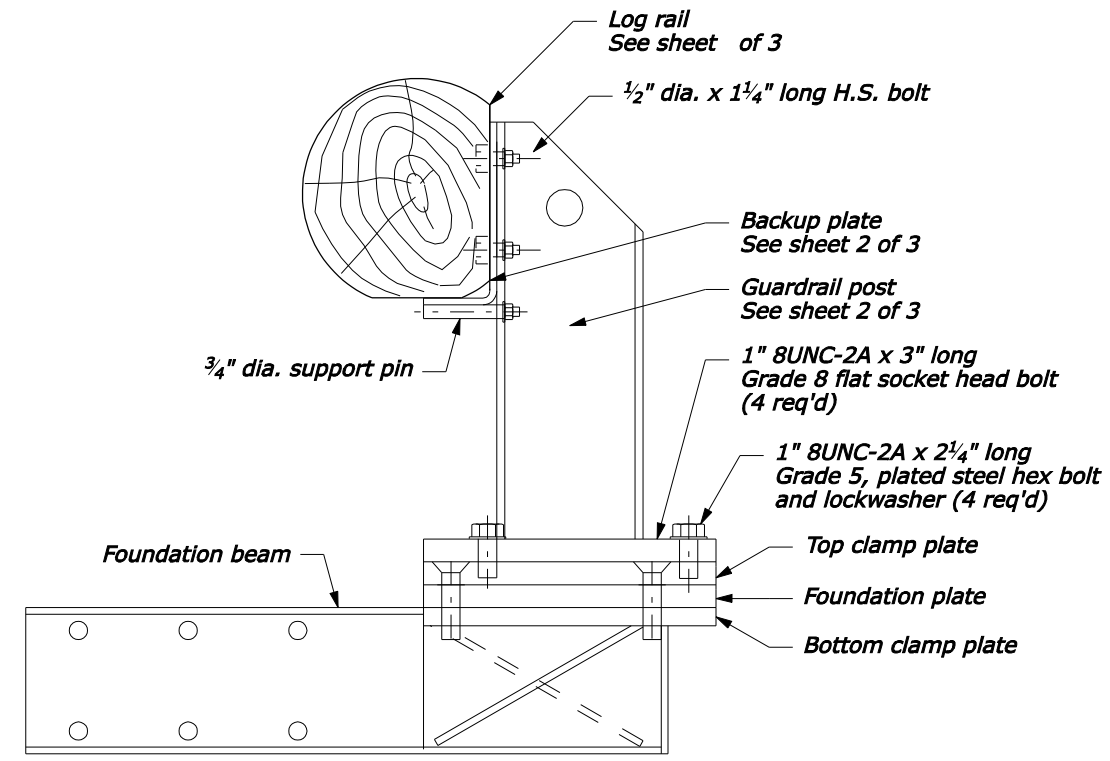


**LOG RAIL
SECTION VIEW**

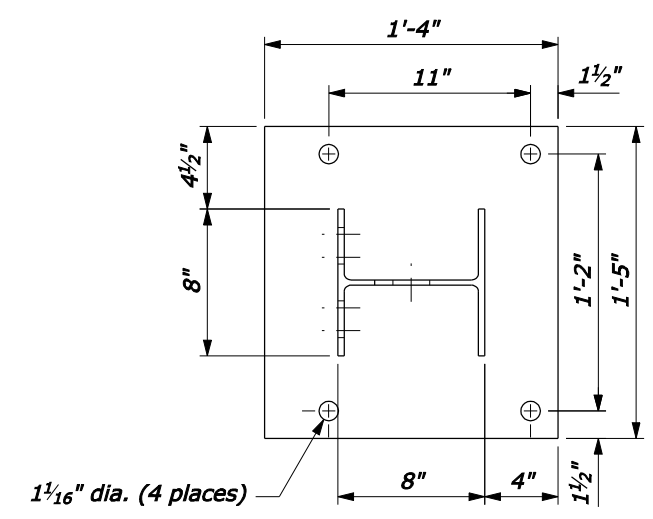
NO SCALE

NOTE:

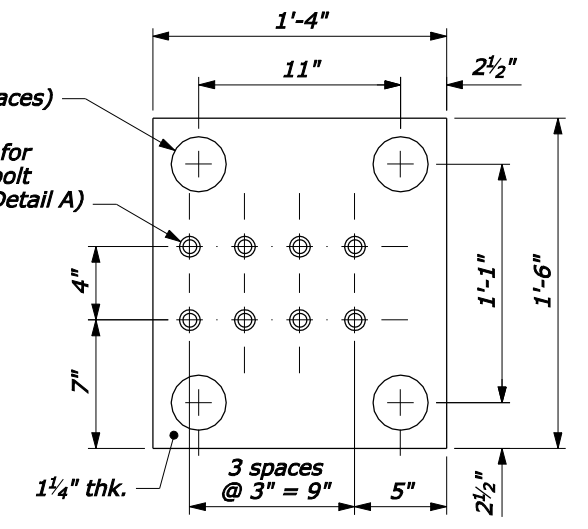
U.S. DEPARTMENT OF TRANSPORTATION FEDERAL HIGHWAY ADMINISTRATION WESTERN FEDERAL LANDS HIGHWAY DIVISION	
U.S. CUSTOMARY DETAIL	
REMOVABLE STEEL LOG RAIL SHEET 2 OF 3	
DETAIL APPROVED FOR USE --/---	DETAIL 617-83
REVISED:	
DRAFT: 3/2005	



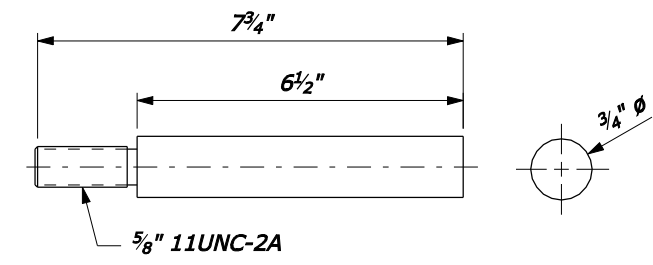
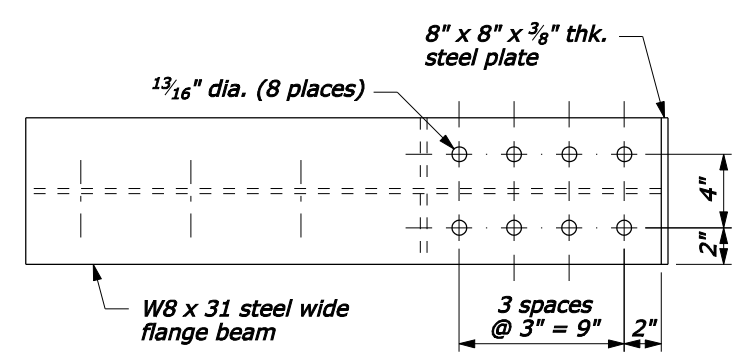
TYPICAL SECTION



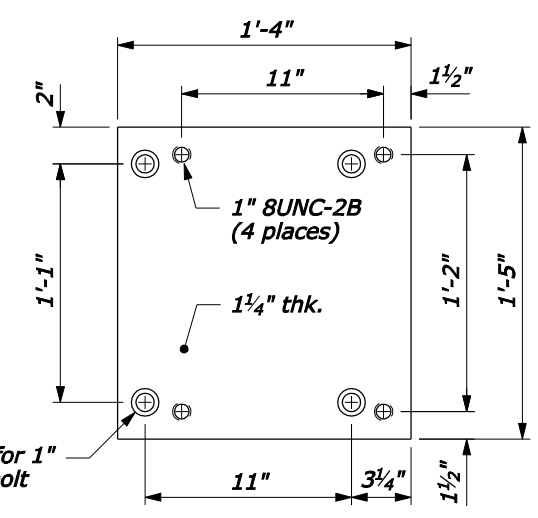
RAIL POST BASE PLATE



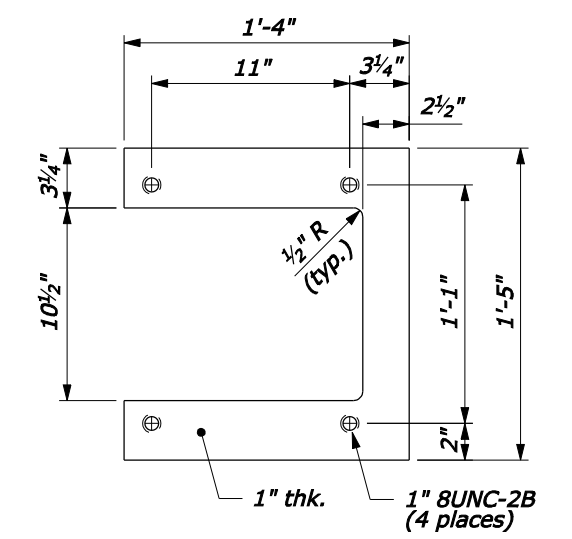
FOUNDATION PLATE



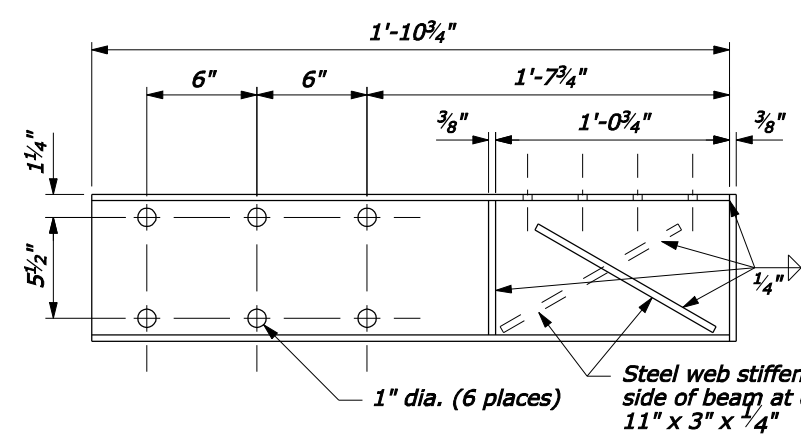
SUPPORT PIN



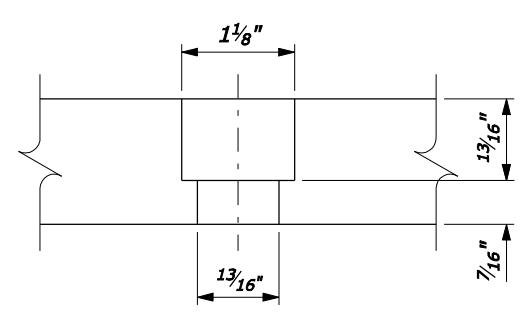
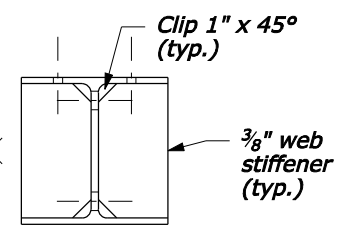
TOP CLAMP PLATE



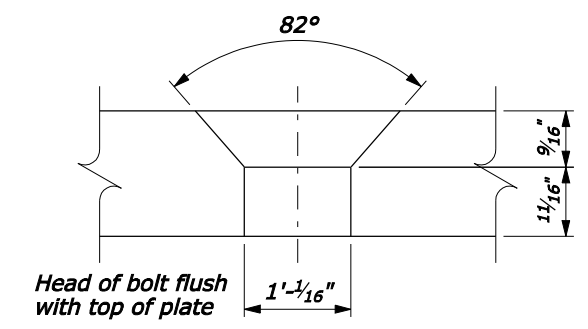
BOTTOM CLAMP PLATE



FOUNDATION BEAM



DETAIL A



DETAIL B

NOTE:

U.S. DEPARTMENT OF TRANSPORTATION
 FEDERAL HIGHWAY ADMINISTRATION
 WESTERN FEDERAL HIGHWAY DIVISION

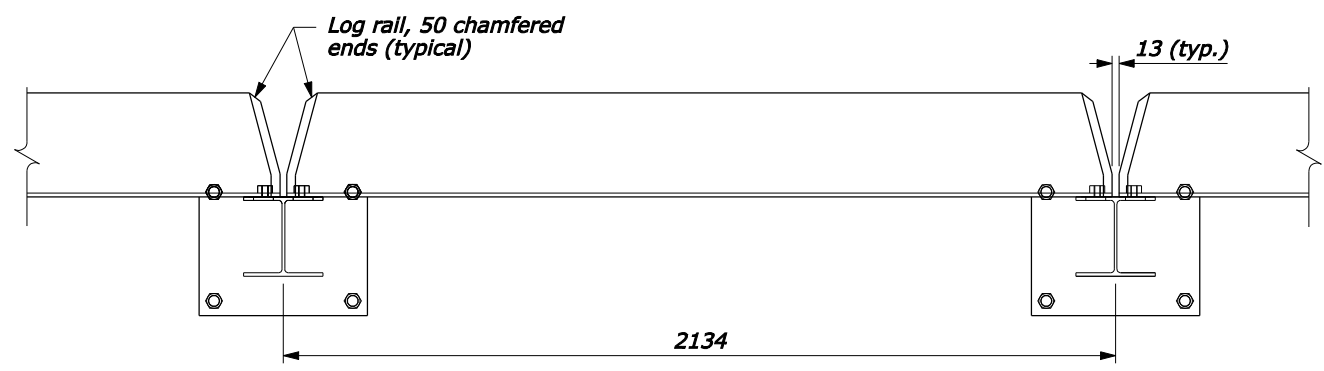
U.S. CUSTOMARY DETAIL

**REMOVABLE STEEL
 LOG RAIL
 SHEET 3 OF 3**

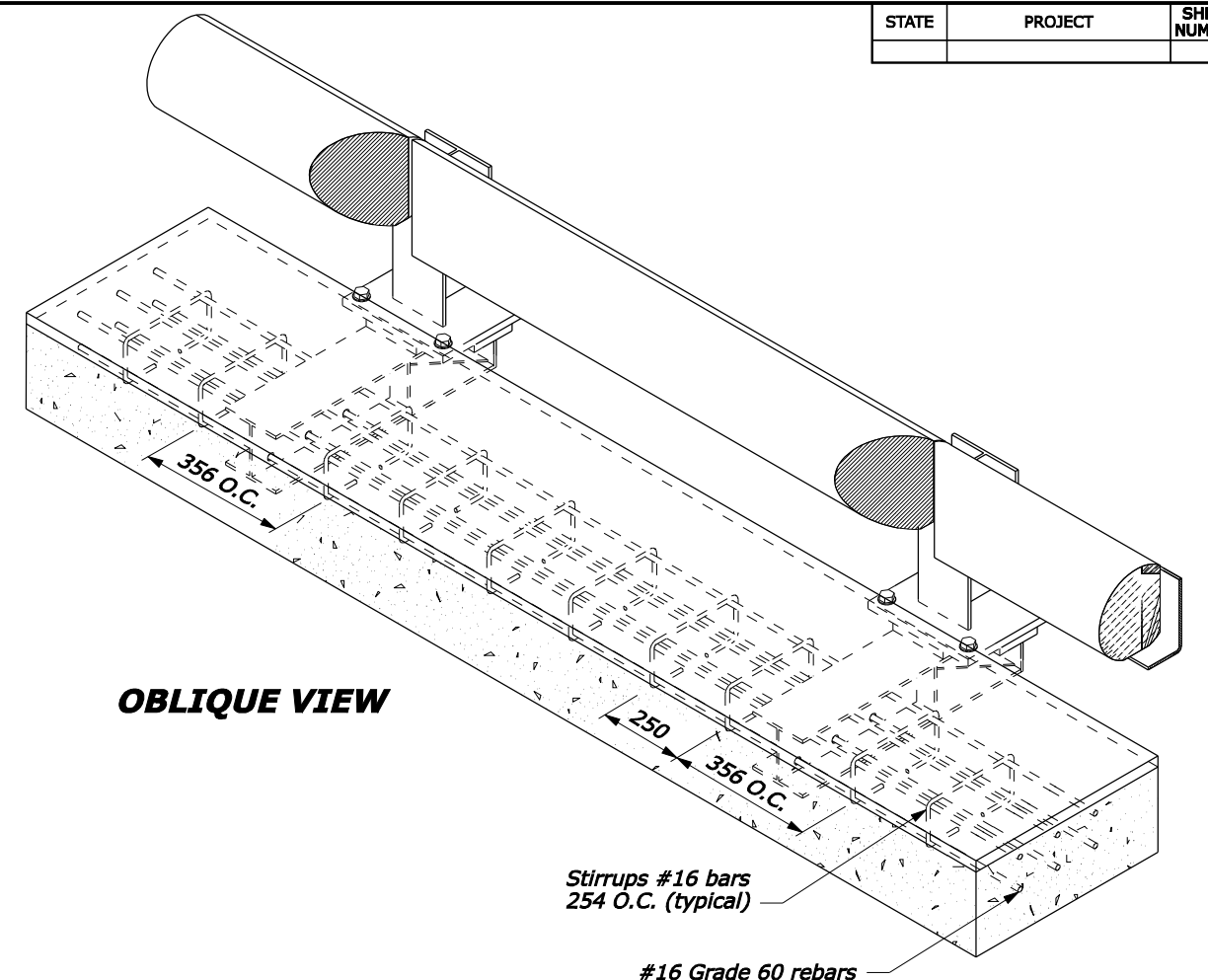
DETAIL APPROVED FOR USE --/---	DETAIL
REVISED:	617-83
DRAFT: 3/2005	

NO SCALE

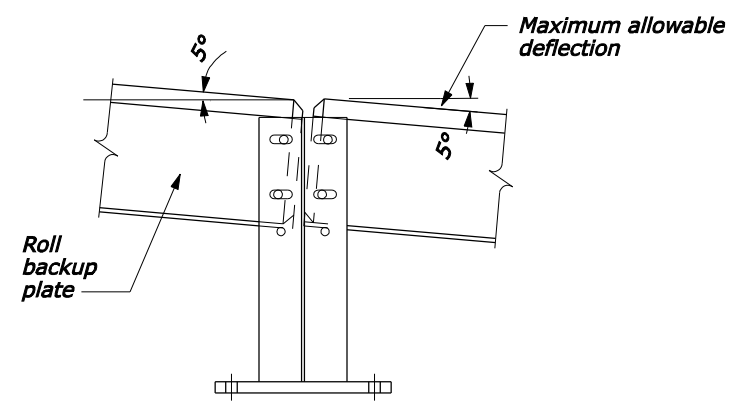
F:\Bridge\Projects\MTGLAC-GTSA\RemovableRail\w61783.dgn



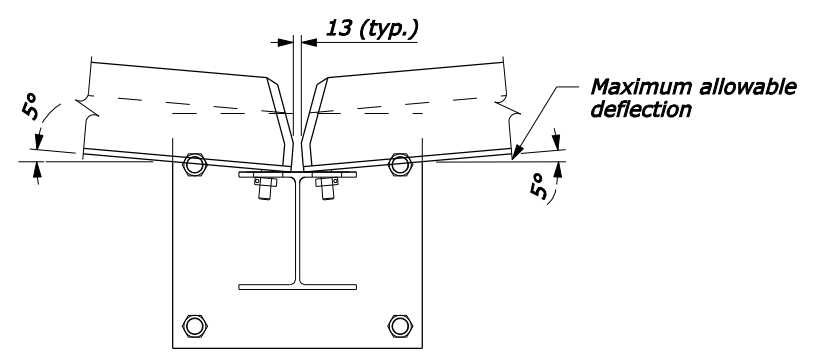
PLAN VIEW



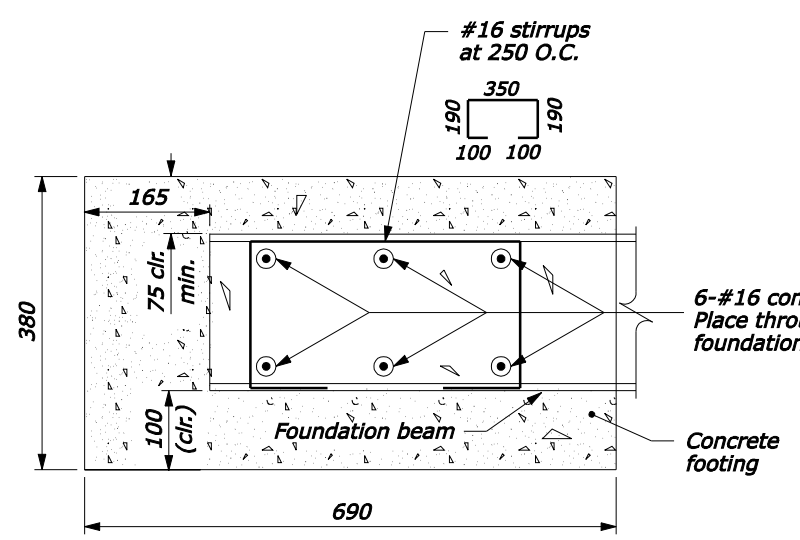
OBLIQUE VIEW



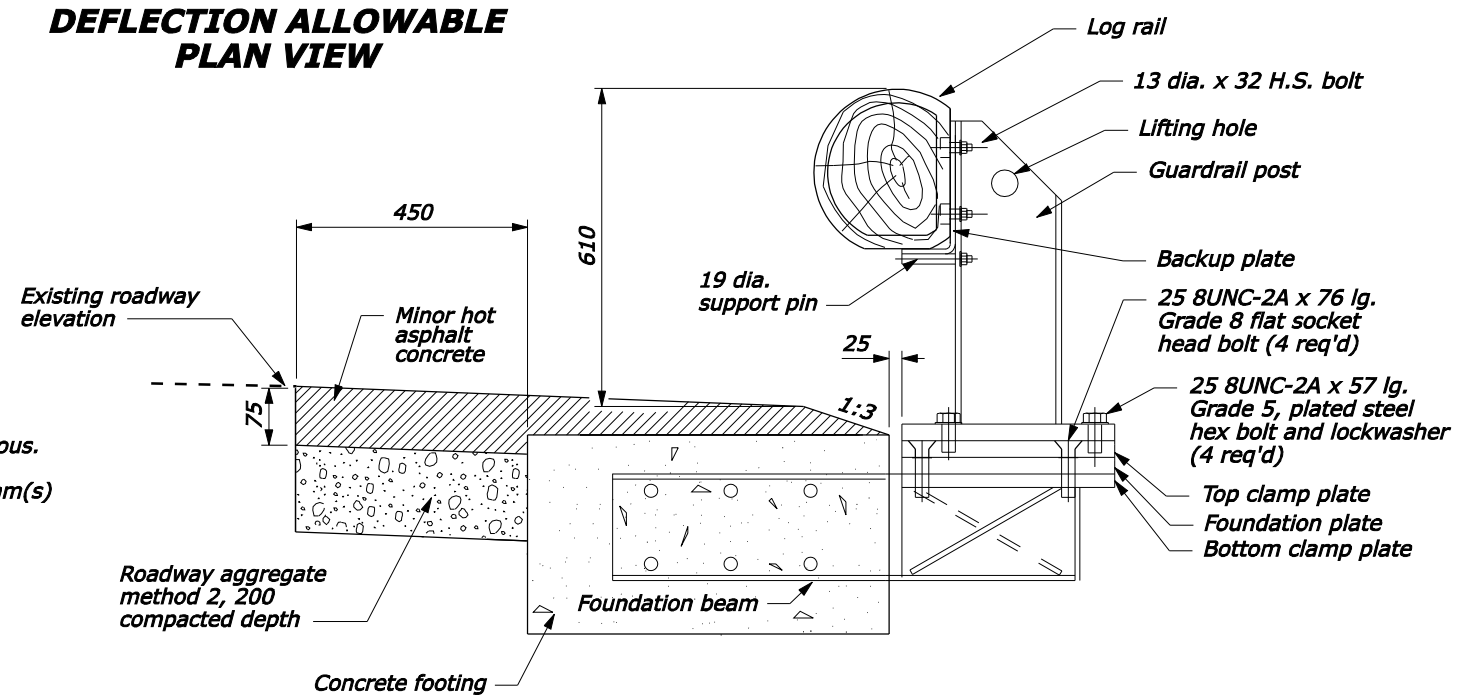
ENDS OF RAILS AT POST:
MAXIMUM VERTICAL
DEFLECTION ALLOWABLE
ELEVATION



MAXIMUM HORIZONTAL
DEFLECTION ALLOWABLE
PLAN VIEW



FOOTING DETAIL
TYPICAL SECTION



TYPICAL SECTION

- NOTE:**
1. Steel is ASTM A242, Grade 50.
 2. Concrete: minimum $f_c' = 24$ MPa.
 3. Furnish hardware in the metric sizes shown. Equivalent U.S. Customary sizes may be used when metric sizes are not available.
 4. Dimensions without units are millimeters.

U.S. DEPARTMENT OF TRANSPORTATION
FEDERAL HIGHWAY ADMINISTRATION
WESTERN FEDERAL LANDS HIGHWAY DIVISION

METRIC DETAIL

**REMOVABLE STEEL BACK
LOG RAIL**

SHEET 1 OF 3

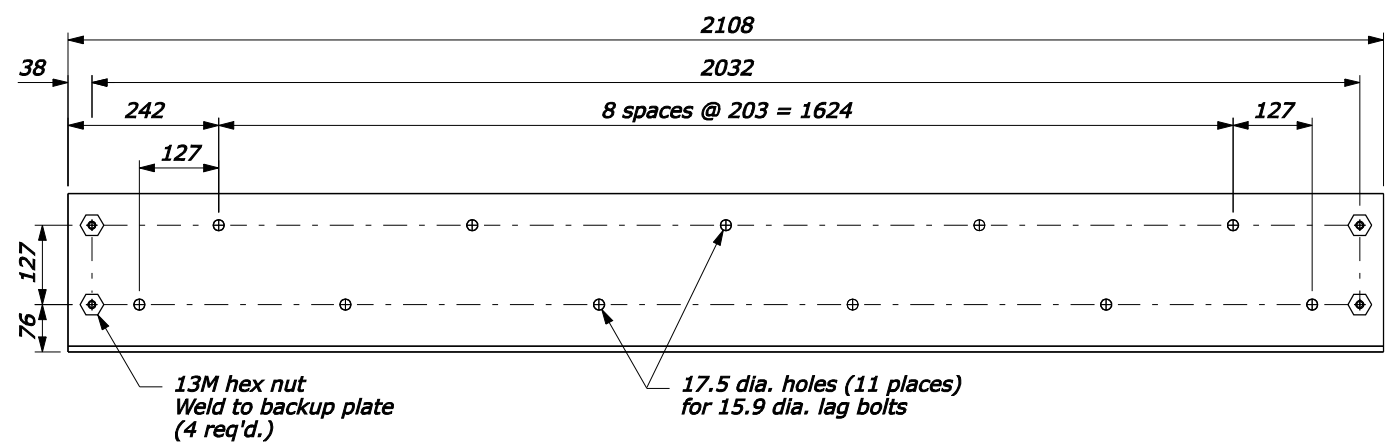
DETAIL APPROVED FOR USE -/----

REVISOR: /
DRAFT: 3/2005

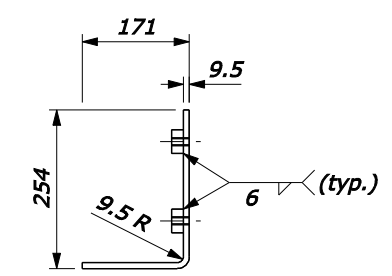
DETAIL
M617-83

NO SCALE

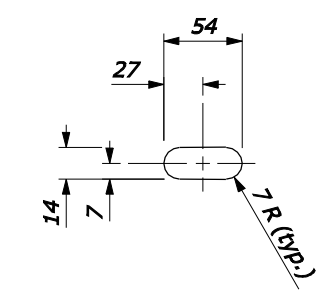
F:\Bridge\Projects\MTGLAC-GTRK\RemovableRail\w61783.dgn _DATE_ + " _FILE_



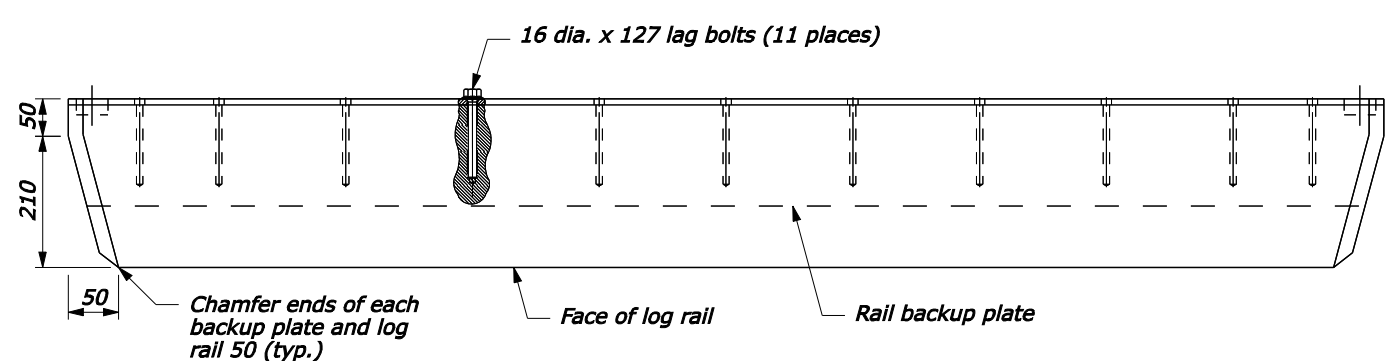
**RAIL BACKUP PLATE
ELEVATION VIEW**



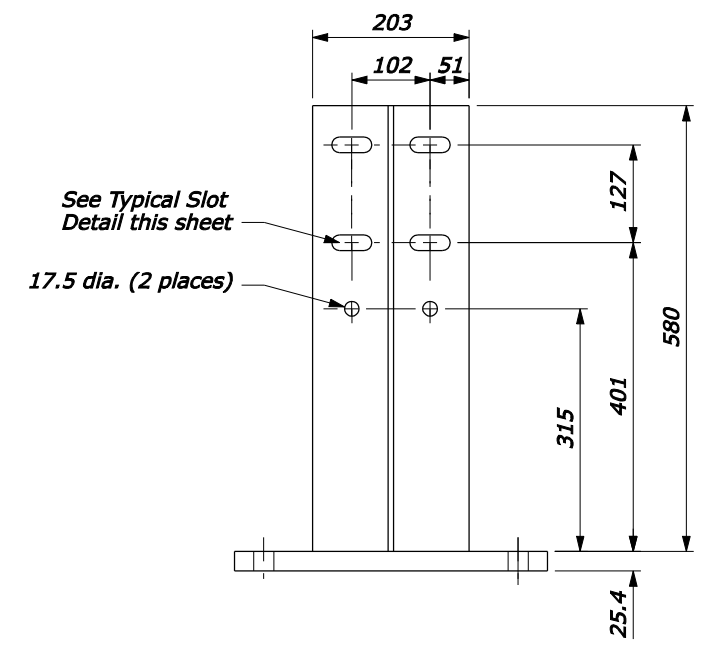
**RAIL BACKUP PLATE
SECTION VIEW**



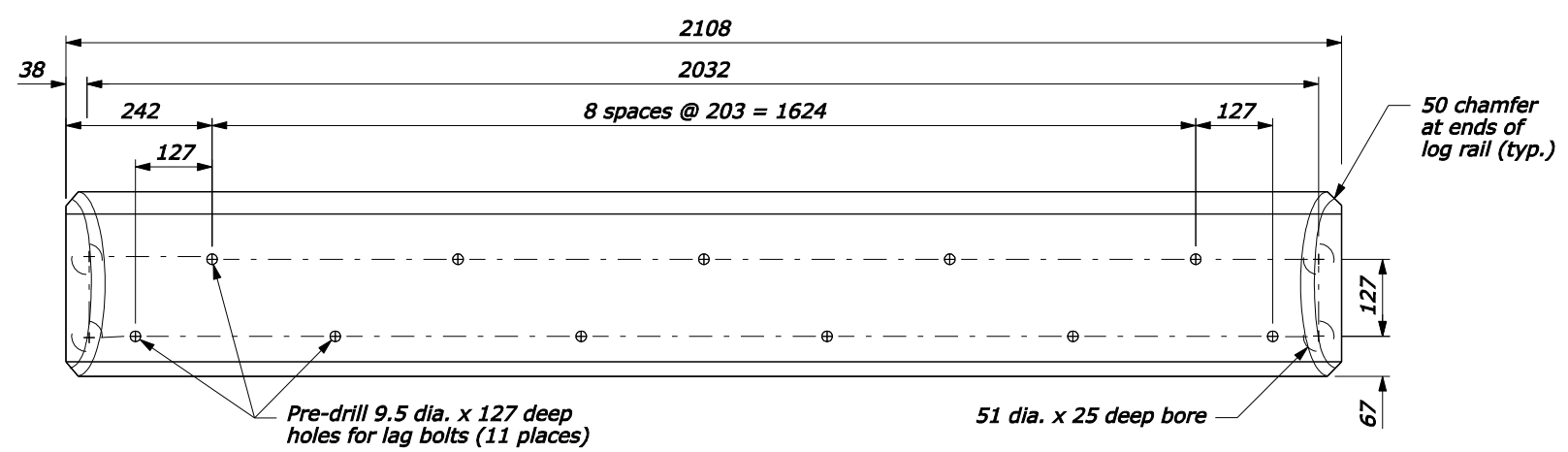
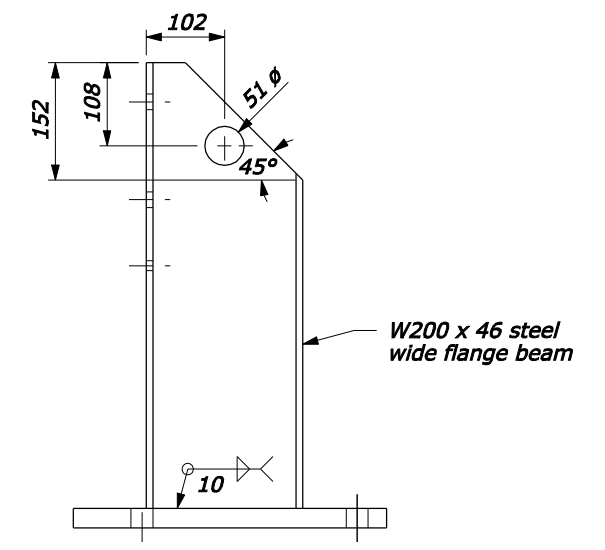
TYPICAL SLOT DETAIL



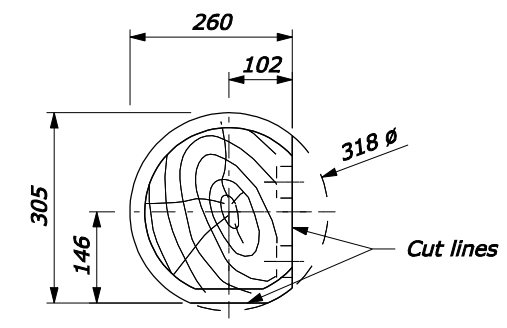
**LOG RAIL & RAIL BACKUP PLATE
PLAN VIEW**



GUARDRAIL POST



**LOG RAIL
ELEVATION VIEW**



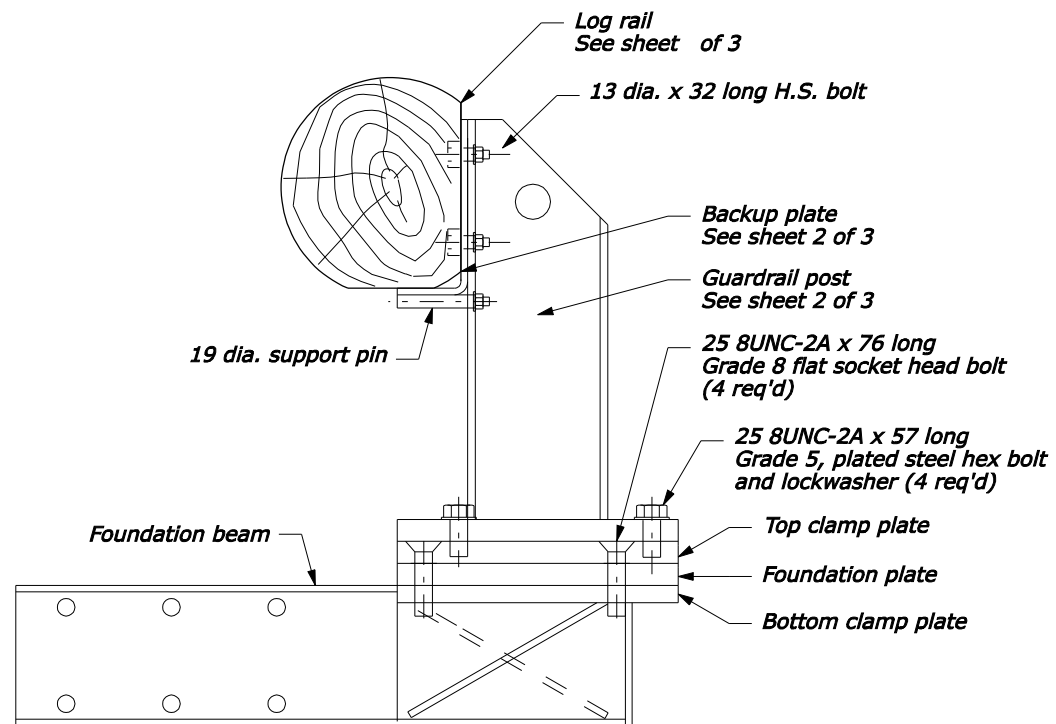
**LOG RAIL
SECTION VIEW**

NOTE:
1. Dimensions without units are millimeters.

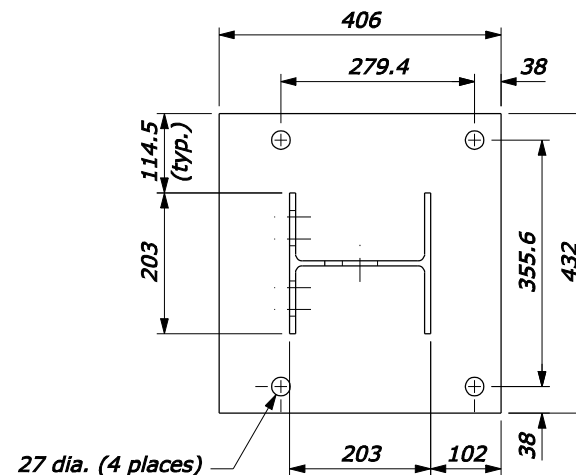
U.S. DEPARTMENT OF TRANSPORTATION FEDERAL HIGHWAY ADMINISTRATION WESTERN FEDERAL LANDS HIGHWAY DIVISION	
METRIC DETAIL	
REMOVABLE STEEL BACK LOG RAIL	
SHEET 2 OF 3	
DETAIL APPROVED FOR USE --/----	DETAIL M617-83
REVISED: DRAFT: 3/2005	

NO SCALE

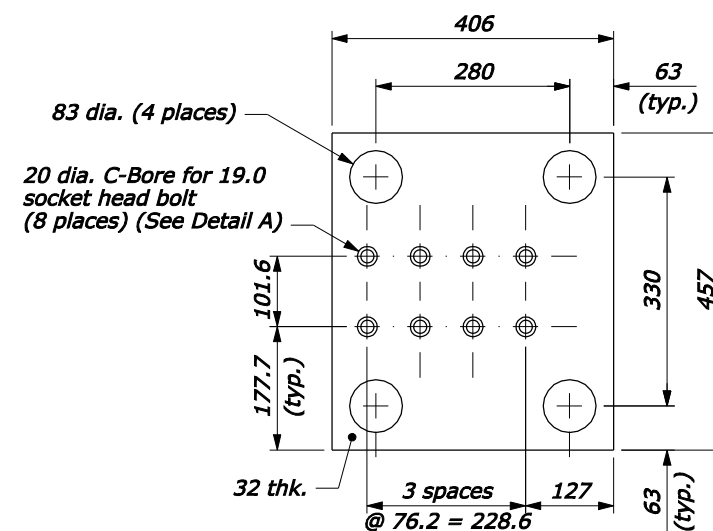
F:\Bridge\Projects\MTGLAC-GTRK\RemovableRail\w61783.dgn _DATE_ + + _FILE_



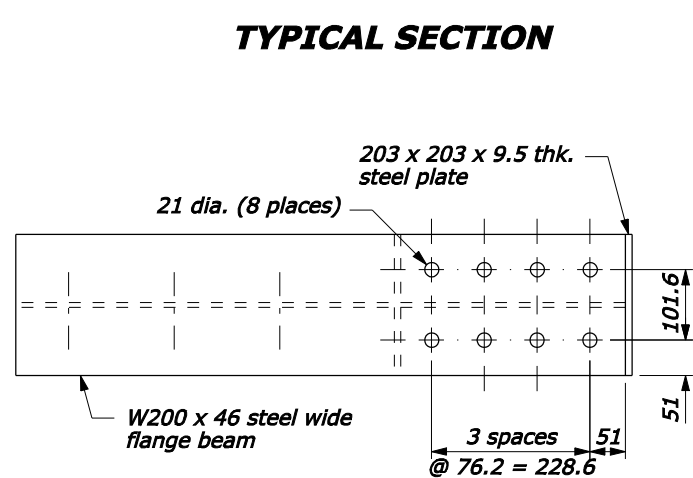
TYPICAL SECTION



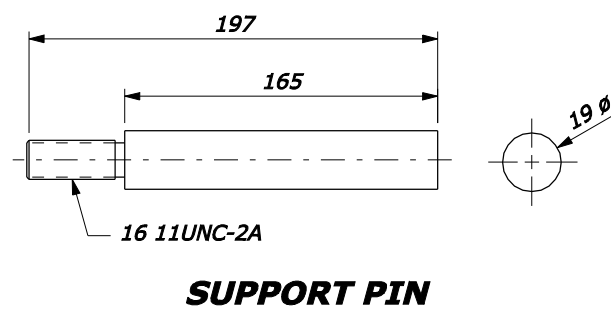
RAIL POST BASE PLATE



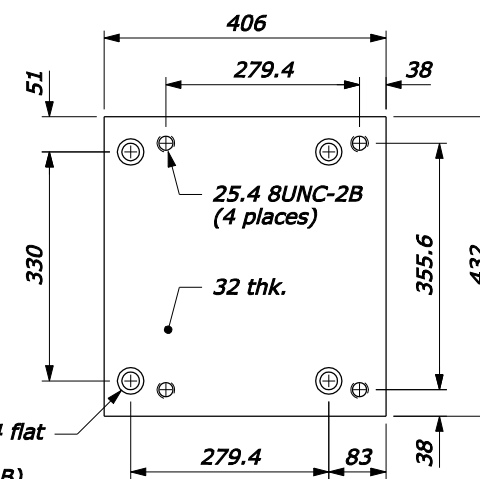
FOUNDATION PLATE



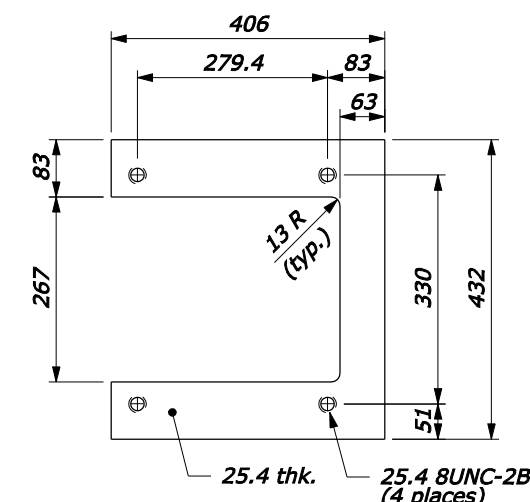
FOUNDATION BEAM



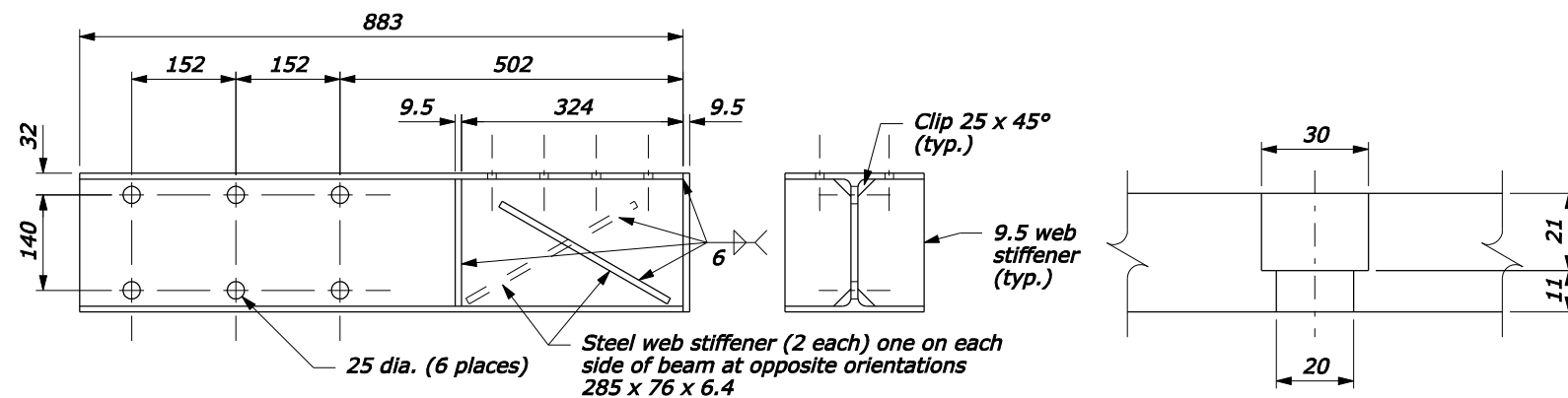
SUPPORT PIN



TOP CLAMP PLATE

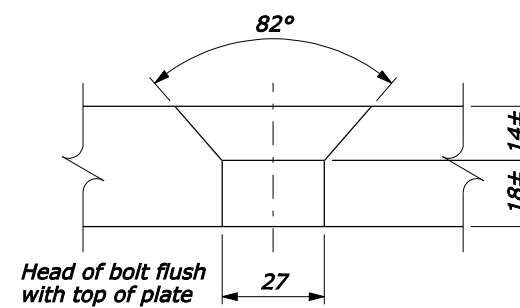


BOTTOM CLAMP PLATE



FOUNDATION BEAM

DETAIL A



DETAIL B

NOTE:
1. Dimensions without units are millimeters.

U.S. DEPARTMENT OF TRANSPORTATION FEDERAL HIGHWAY ADMINISTRATION WESTERN FEDERAL LANDS HIGHWAY DIVISION	
METRIC DETAIL	
REMOVABLE STEEL BACK LOG RAIL	
SHEET 3 OF 3	
DETAIL APPROVED FOR USE --/----	DETAIL M617-83
REVISED: DRAFT: 3/2005	

NO SCALE