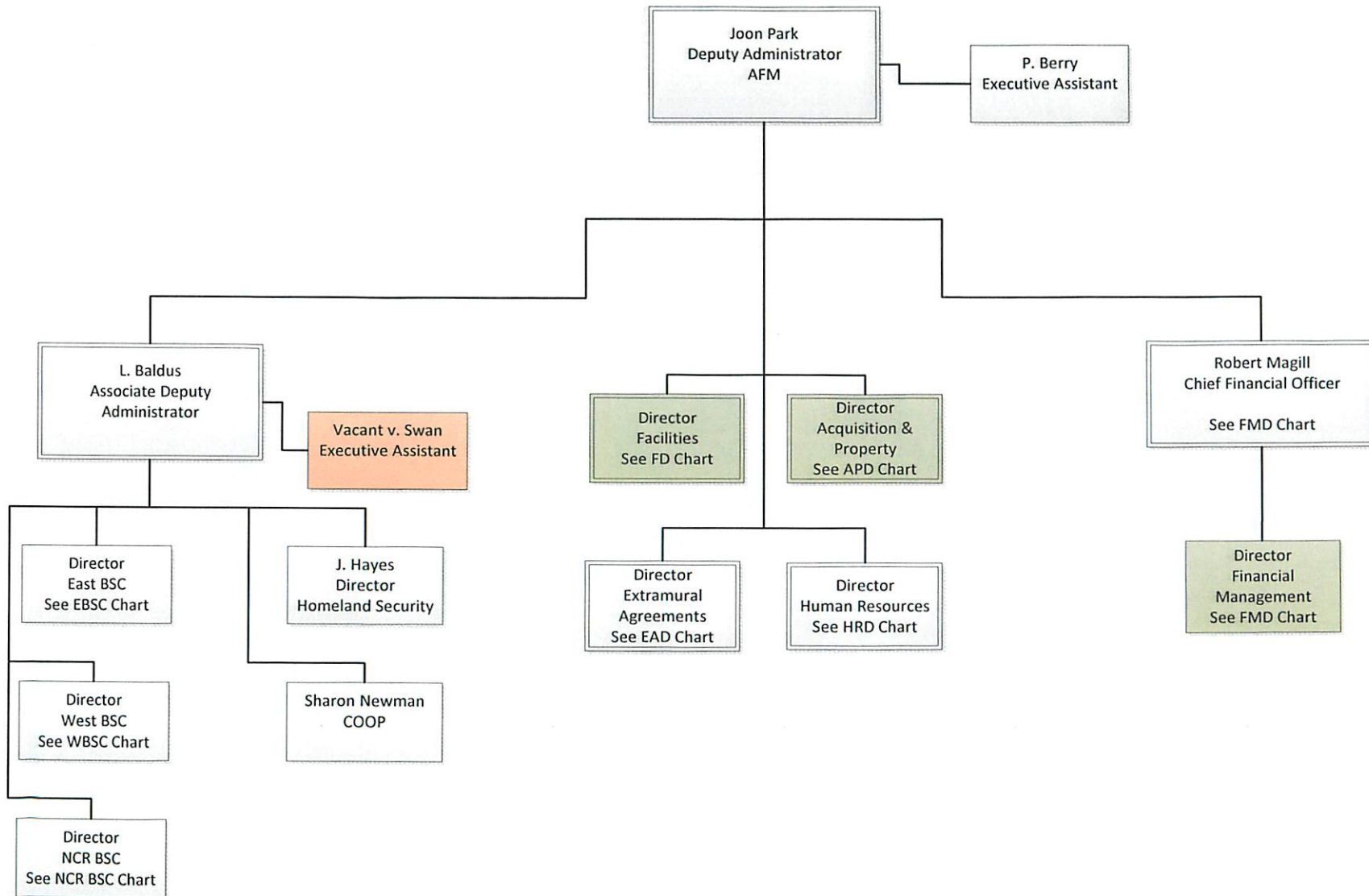
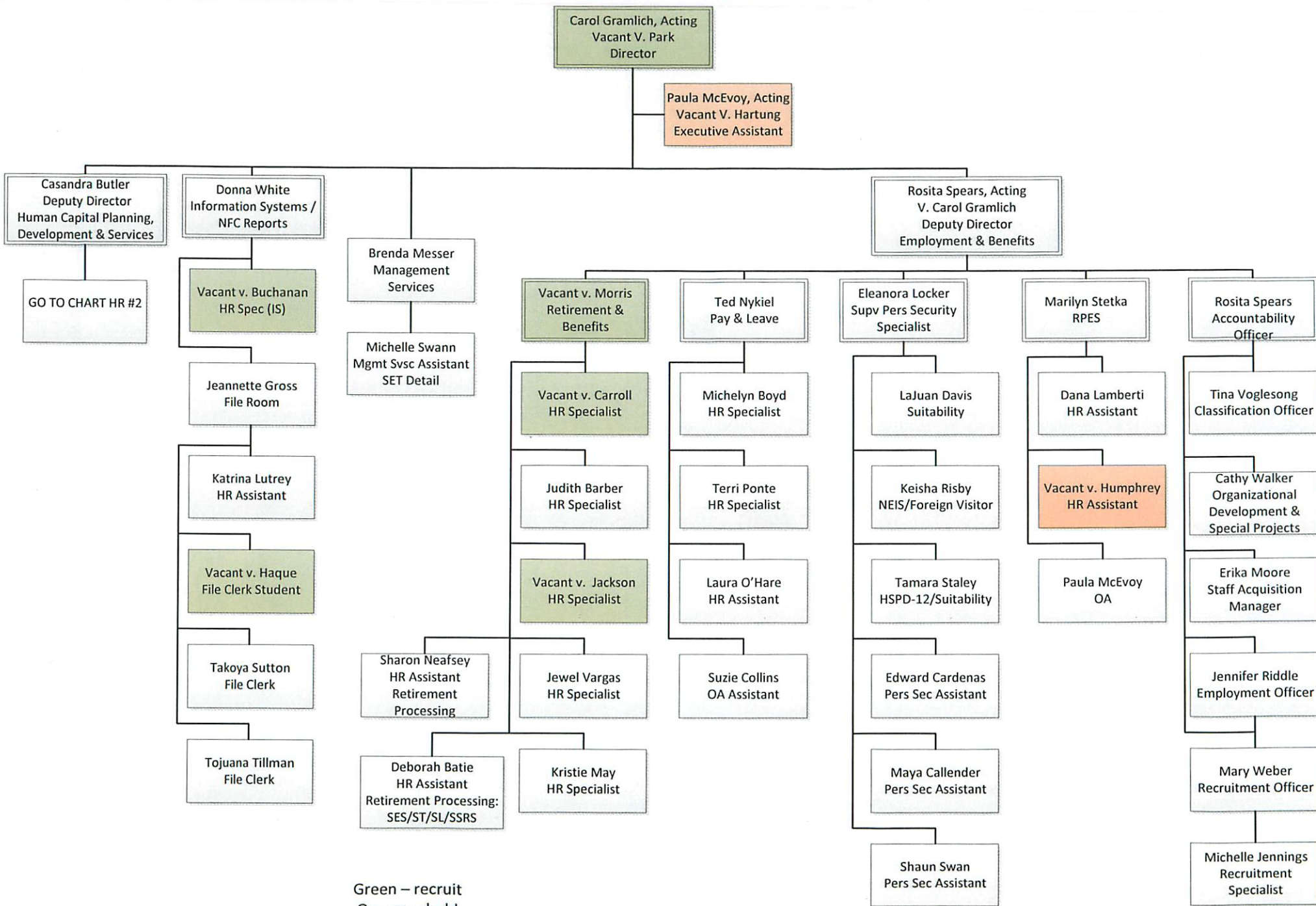


# Administrative and Financial Management



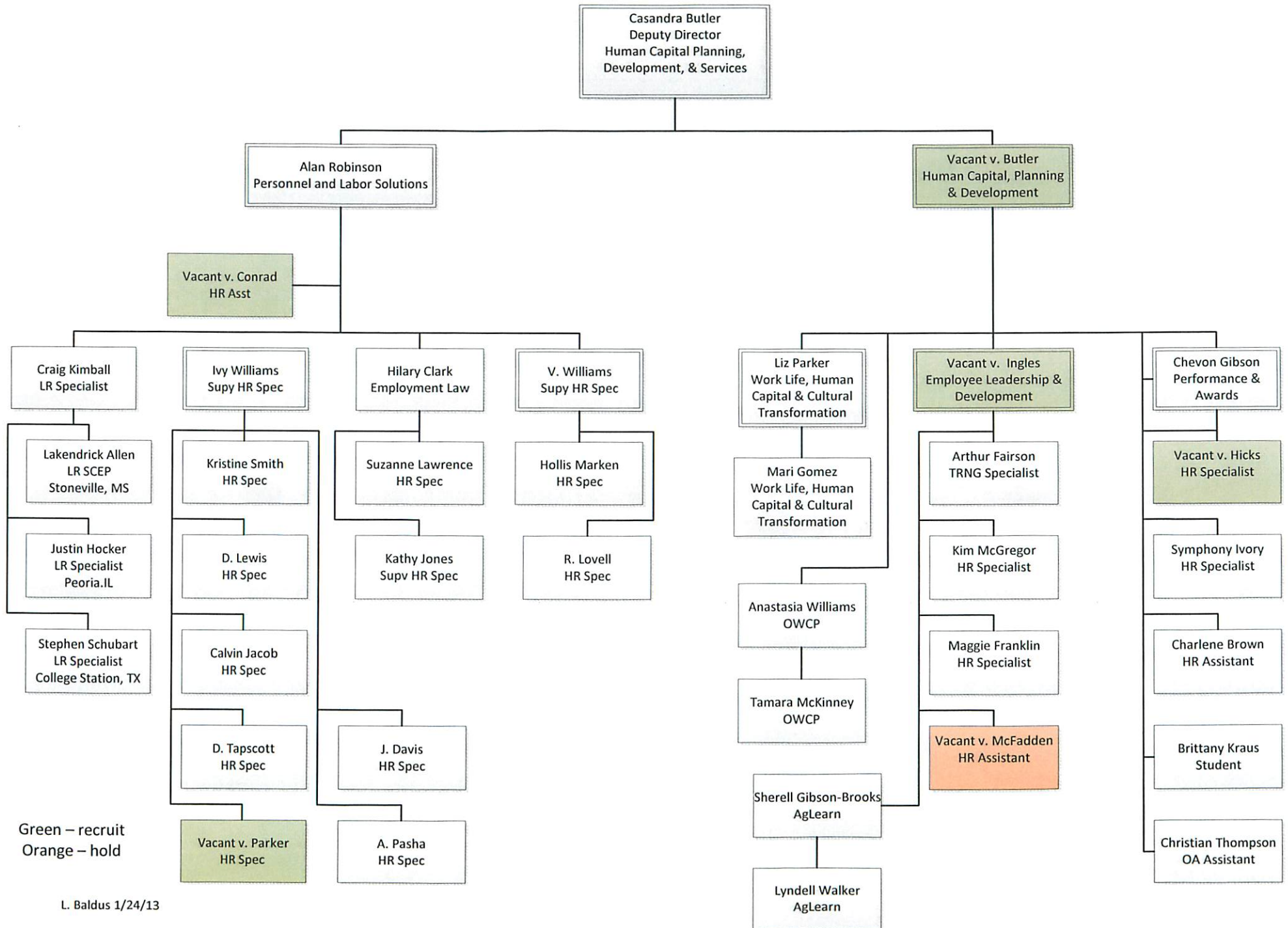
Green – recruit  
Orange – hold

# Human Resources Division – Chart 1

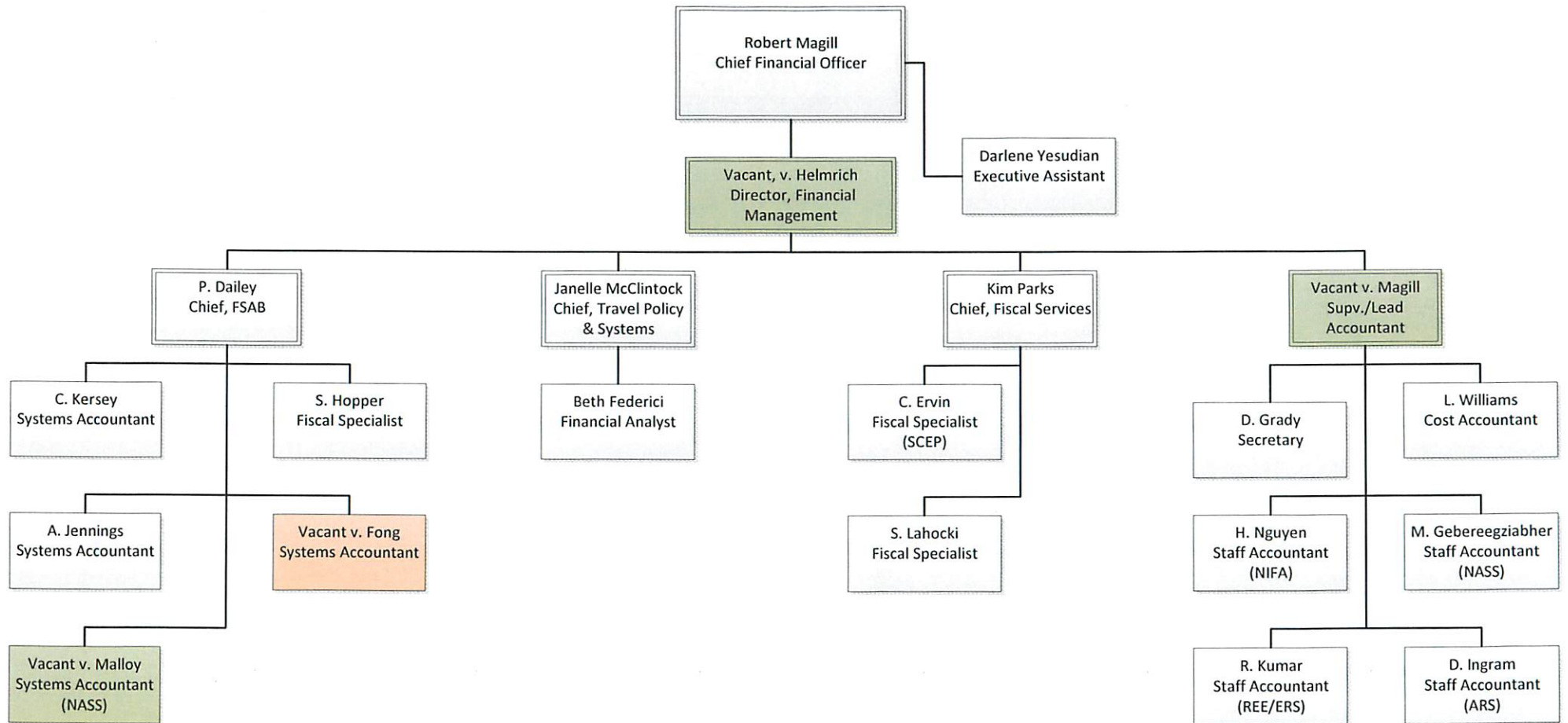


Green – recruit  
Orange – hold

## Human Resources – Chart #2

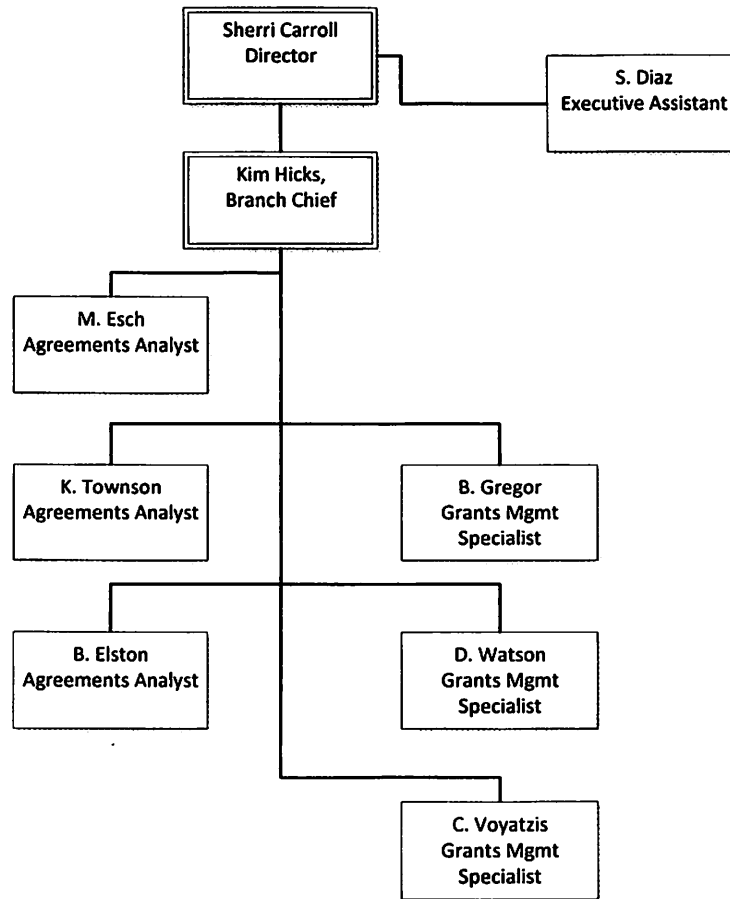


# Financial Management

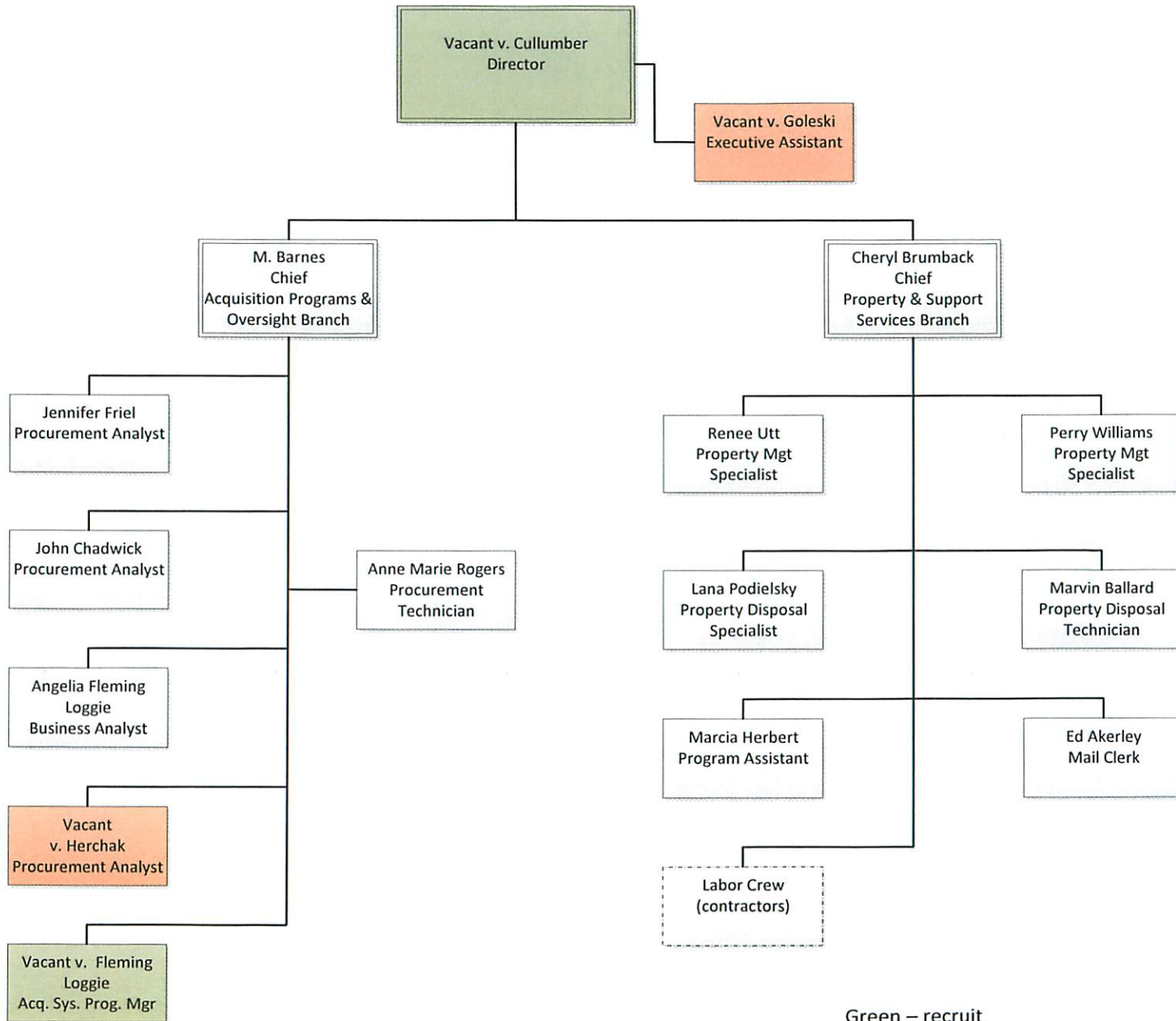


Green – recruit  
Orange – hold

# Extramural Agreements

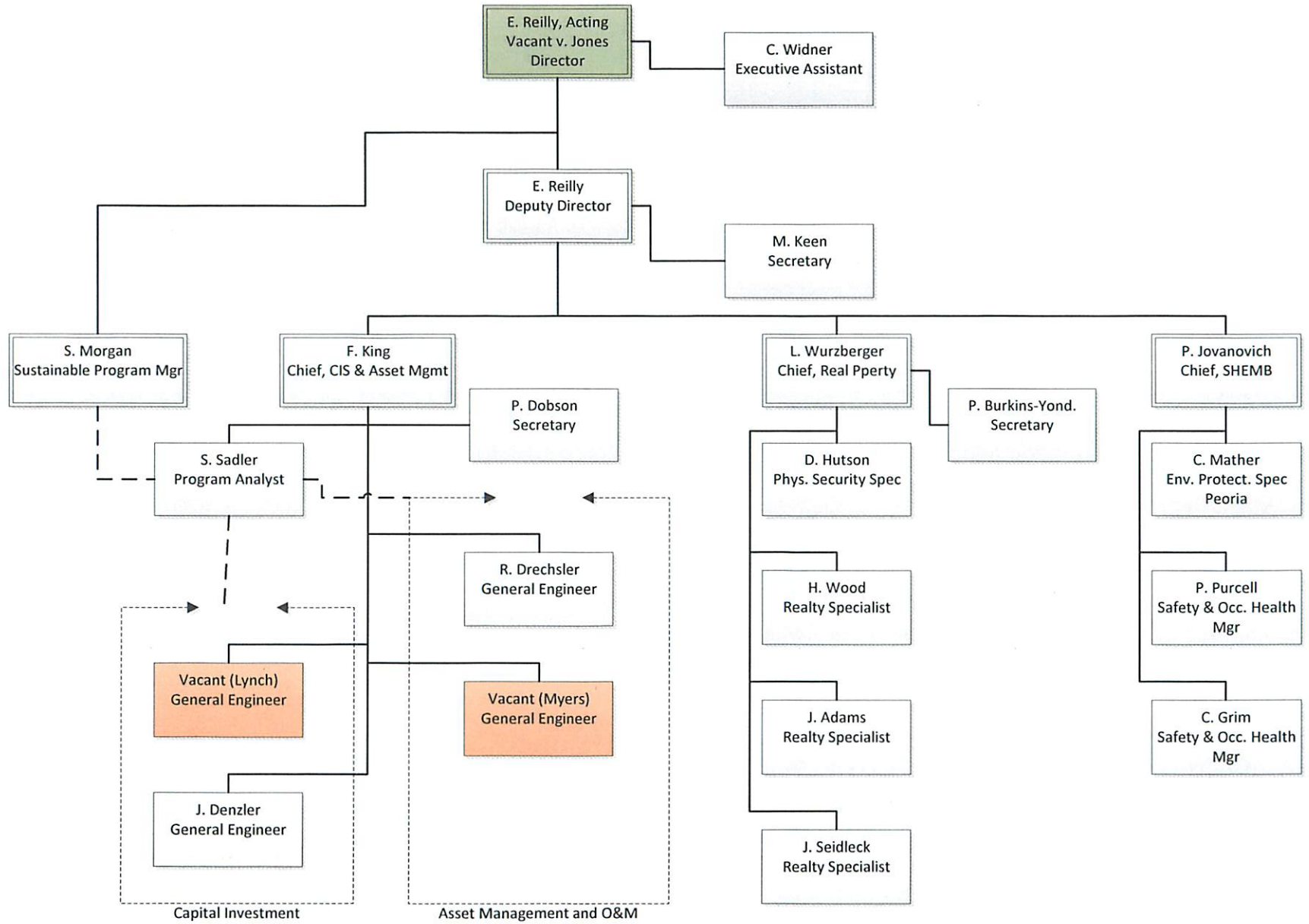


# Acquisition and Property



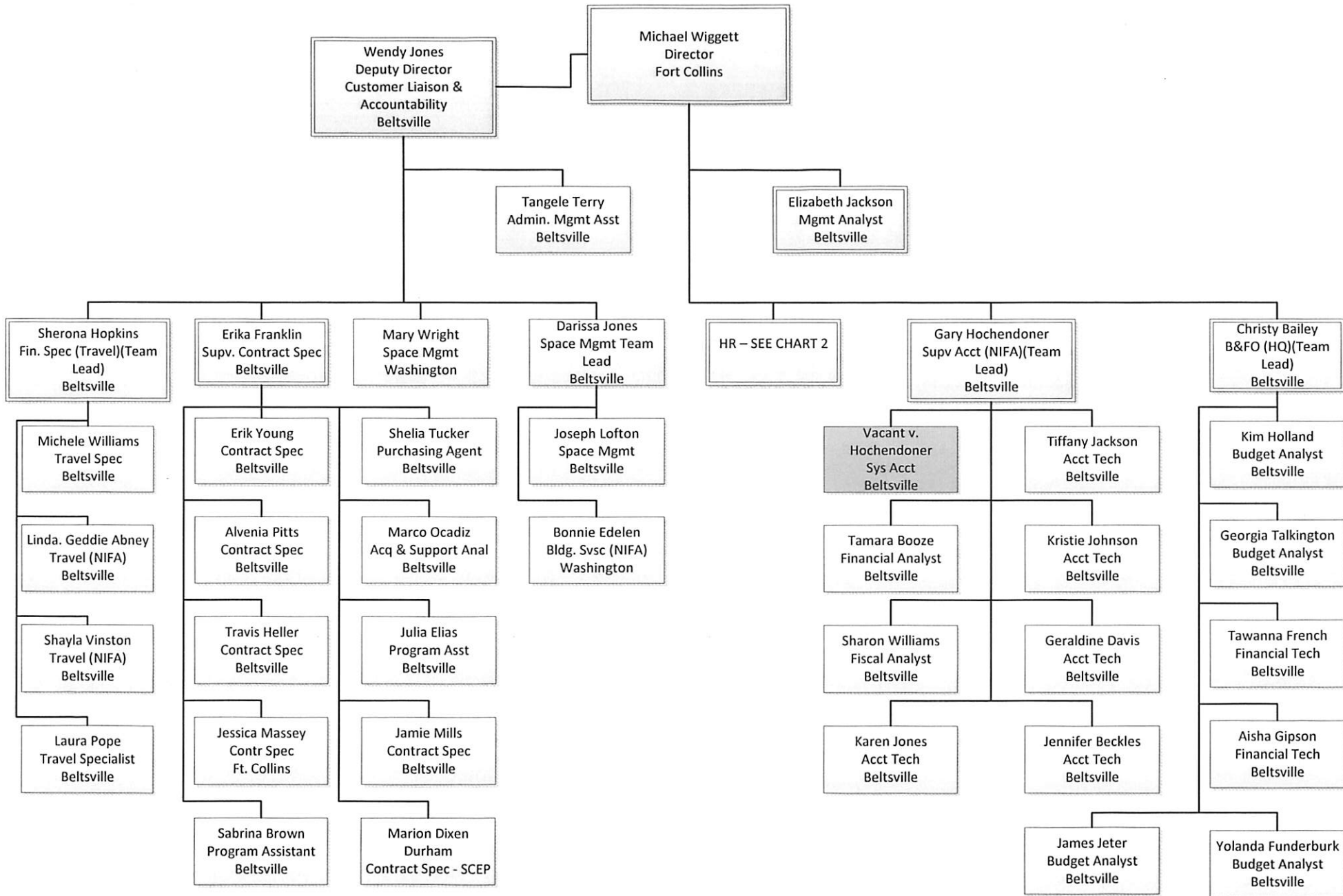
Green – recruit  
Orange – hold

# Facilities



Green – recruit  
Orange – hold

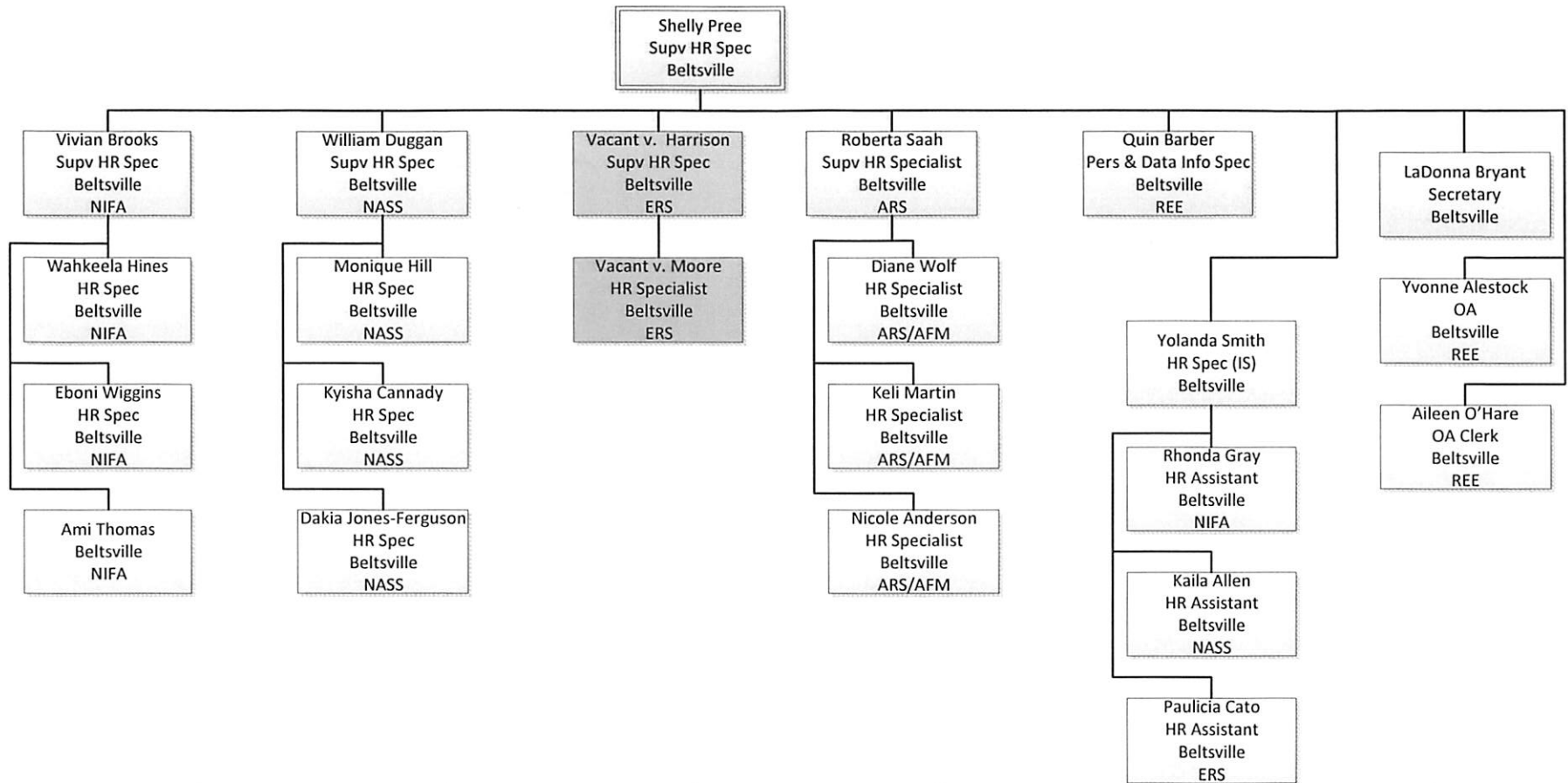
# National Capital Region Business Service Center



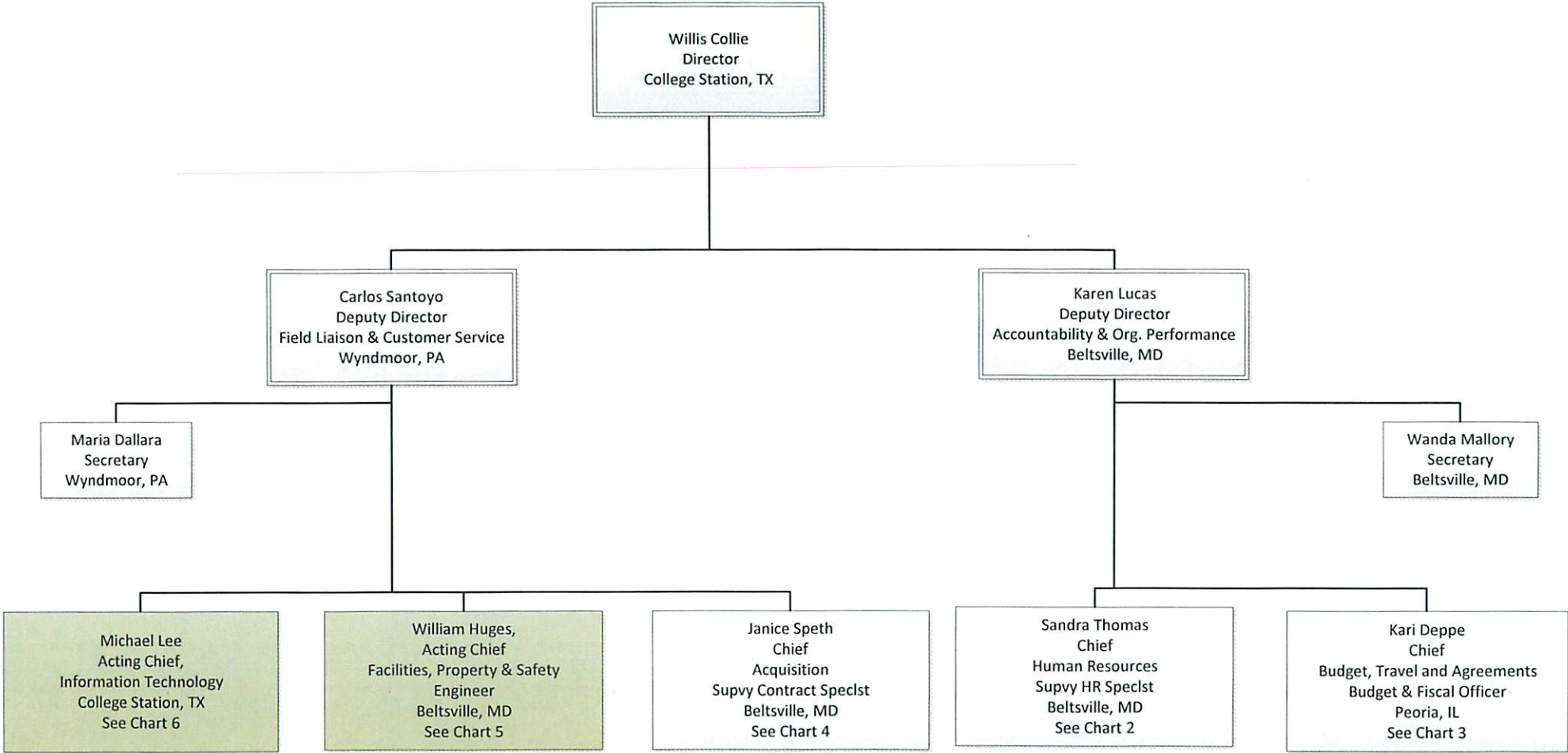
Green – recruit  
Orange – hold



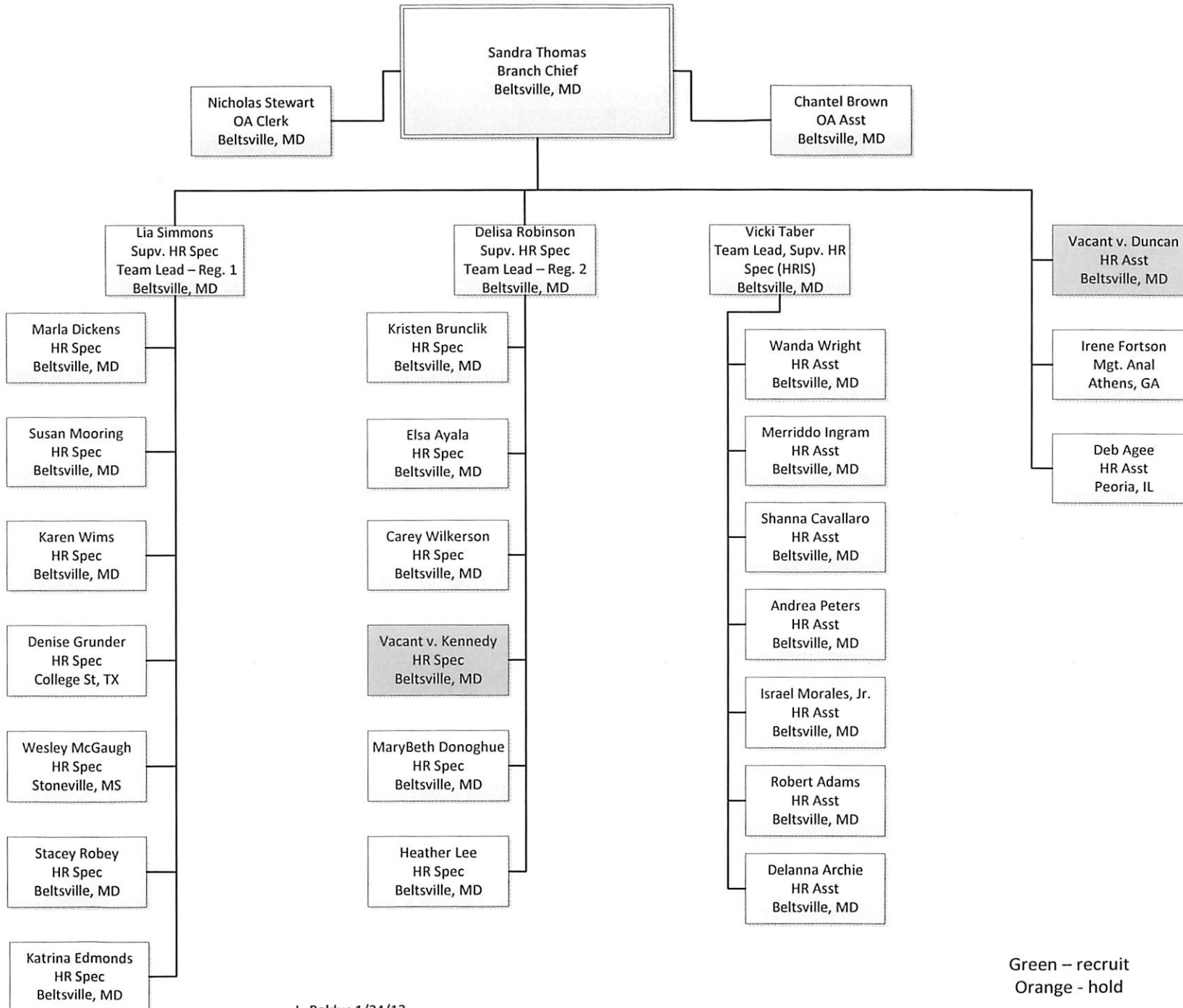
National Capital Region Business Service Center –  
Human Resources (Chart #2)



Eastern Business Service Center  
Chart #1

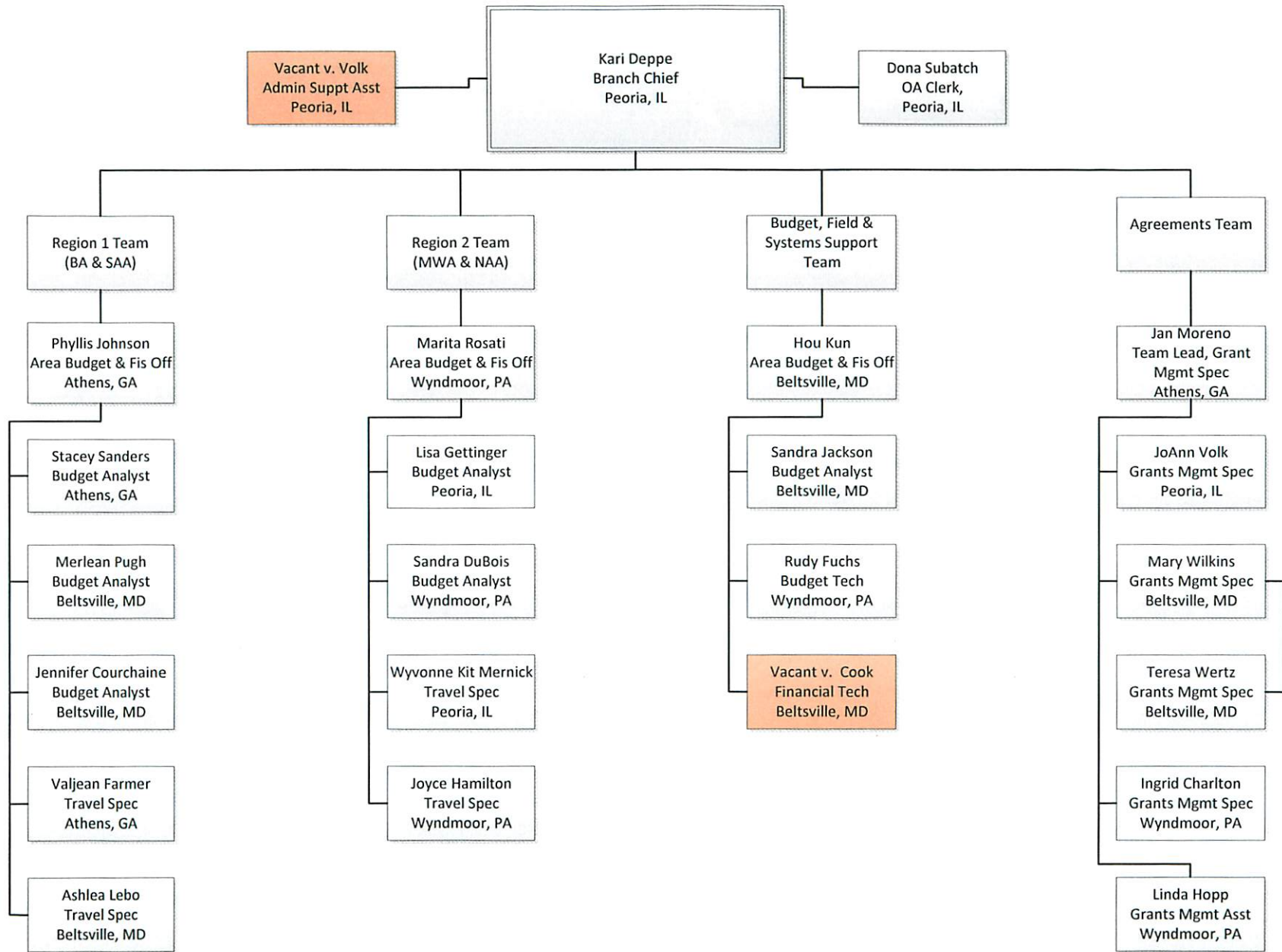


Eastern Business Service Center - Human Resources  
Chart #2

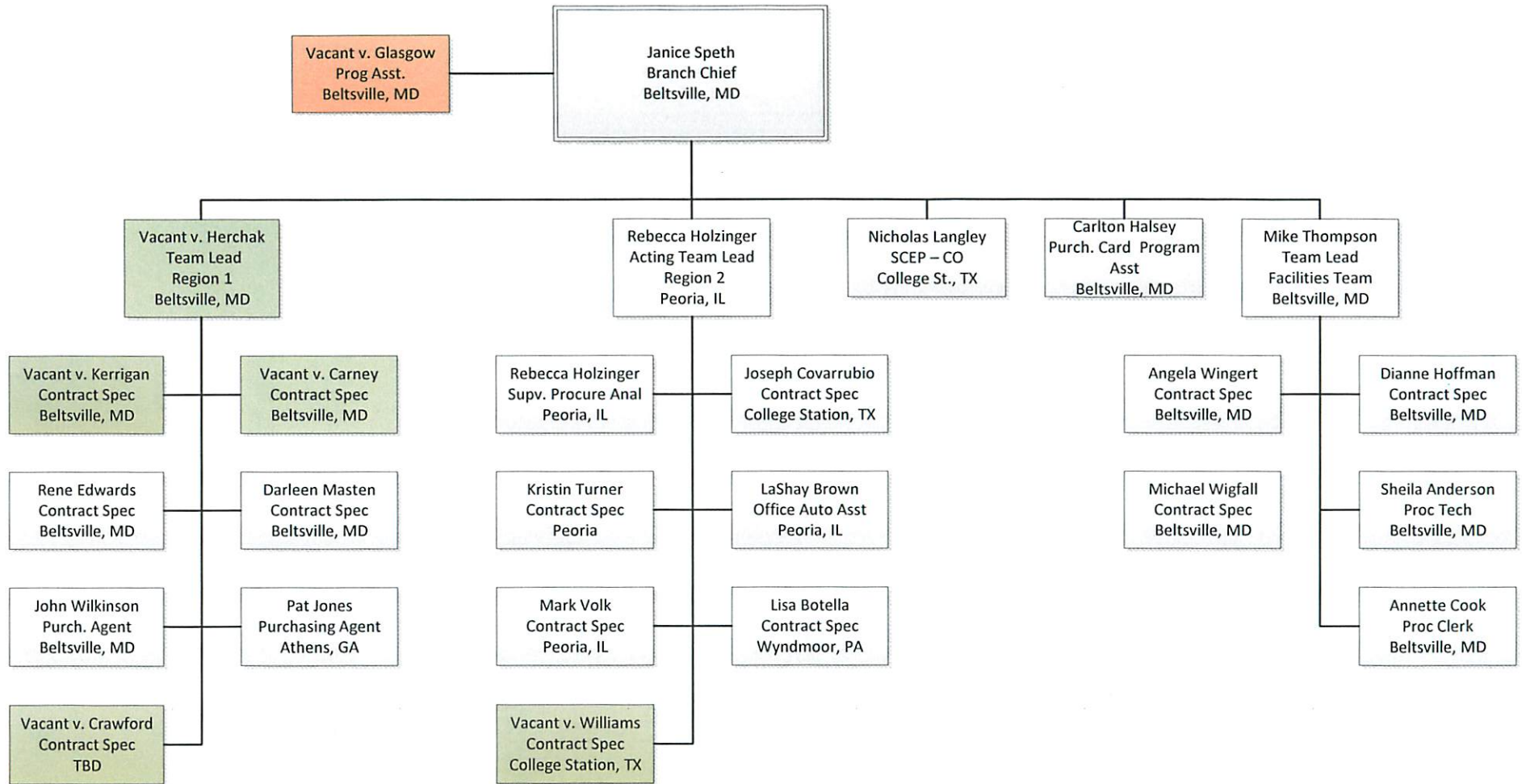


Green - recruit  
Orange - hold

Eastern Business Service Center - Budget, Travel and Agreements  
Chart #3

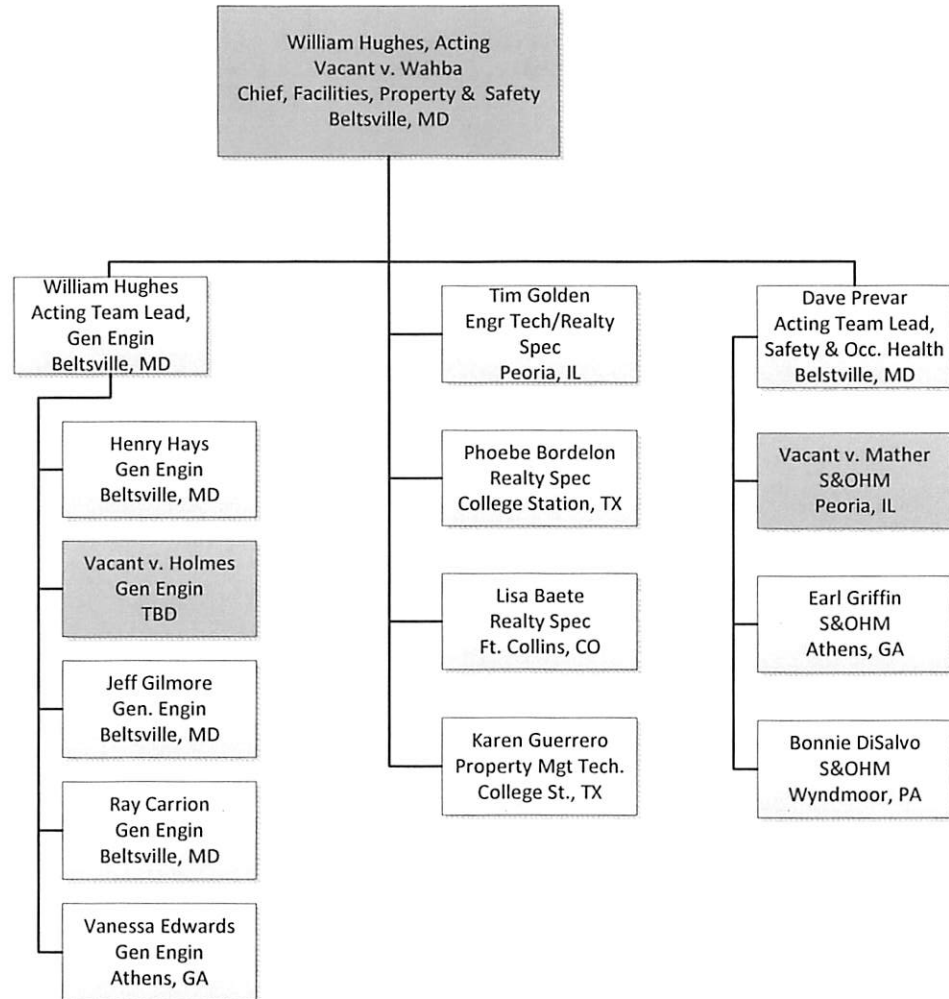


Eastern Business Service Center - Acquisition Branch  
Chart #4

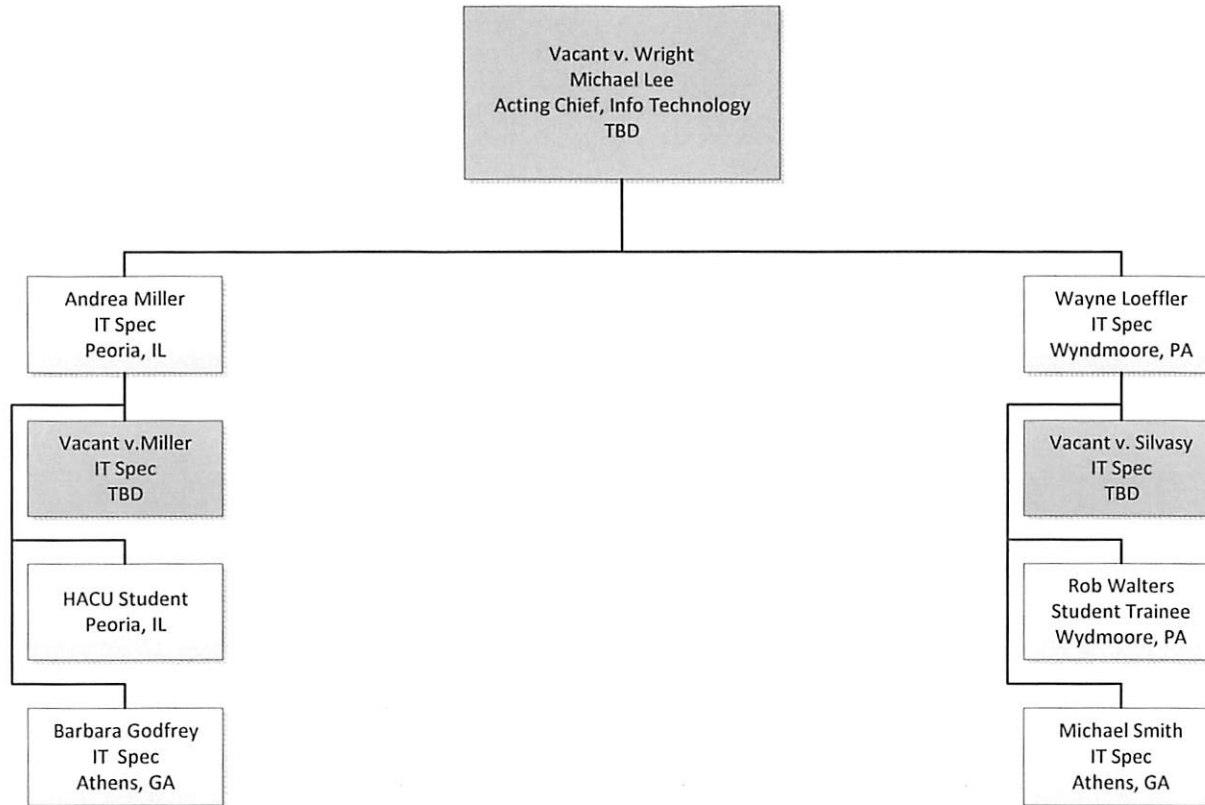


Green – recruit  
Orange – hold

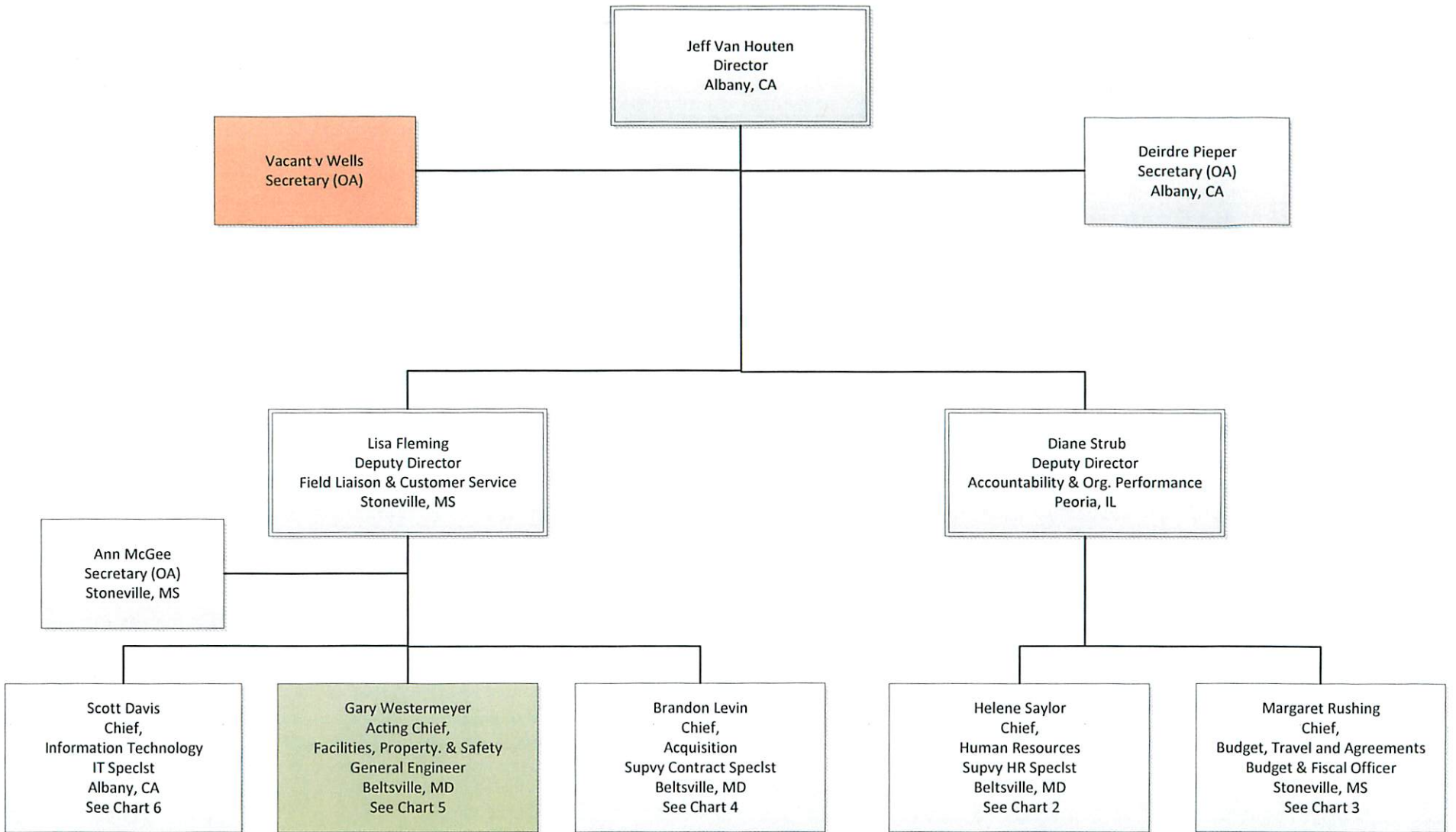
Eastern Business Service Center – Facilities, Property and Safety Branch  
 Chart 5



Eastern Business Service Center – Information Technology  
Chart 6



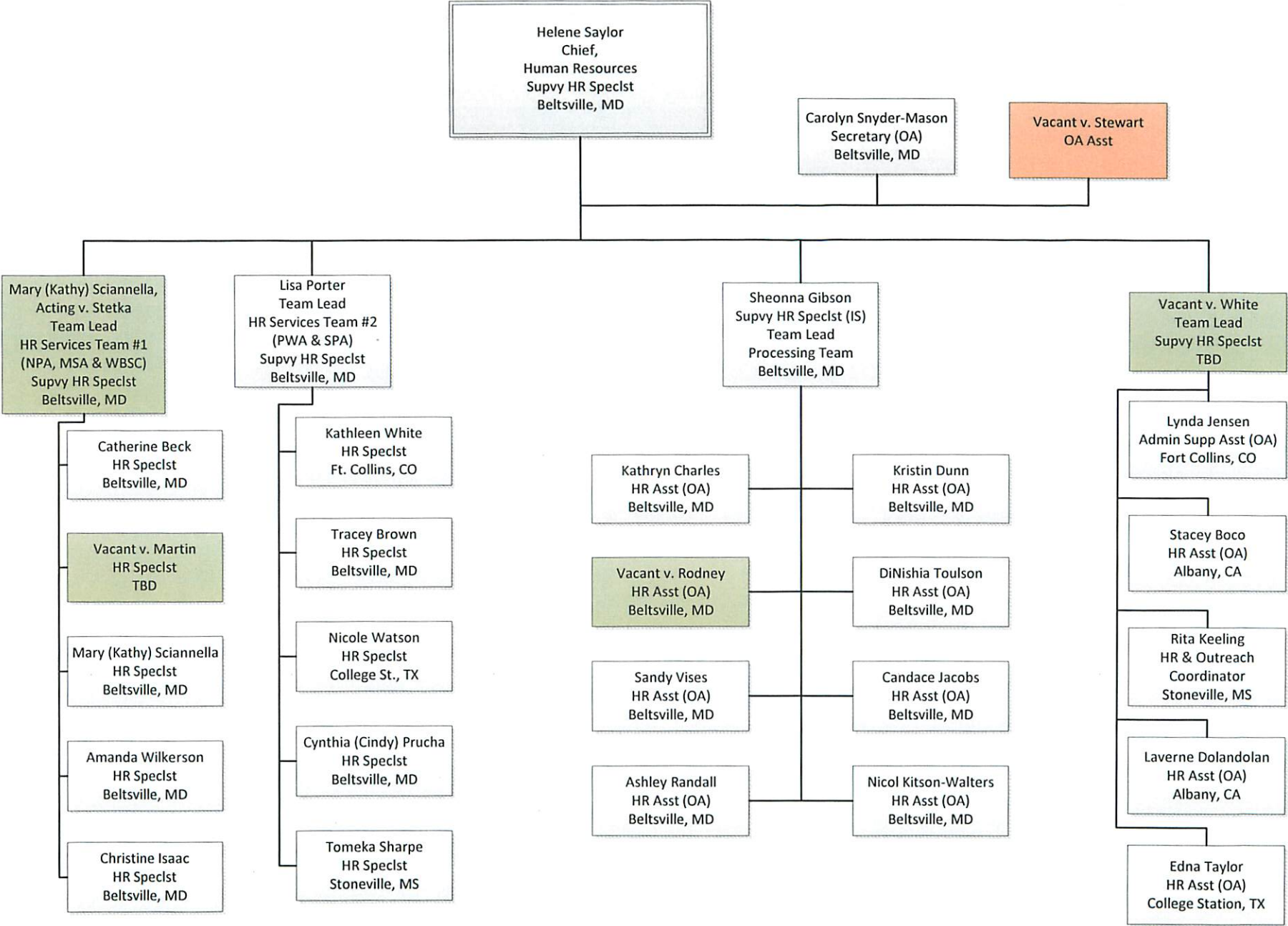
Western Business Service Center  
Chart #1



Green – recruit  
Orange – hold

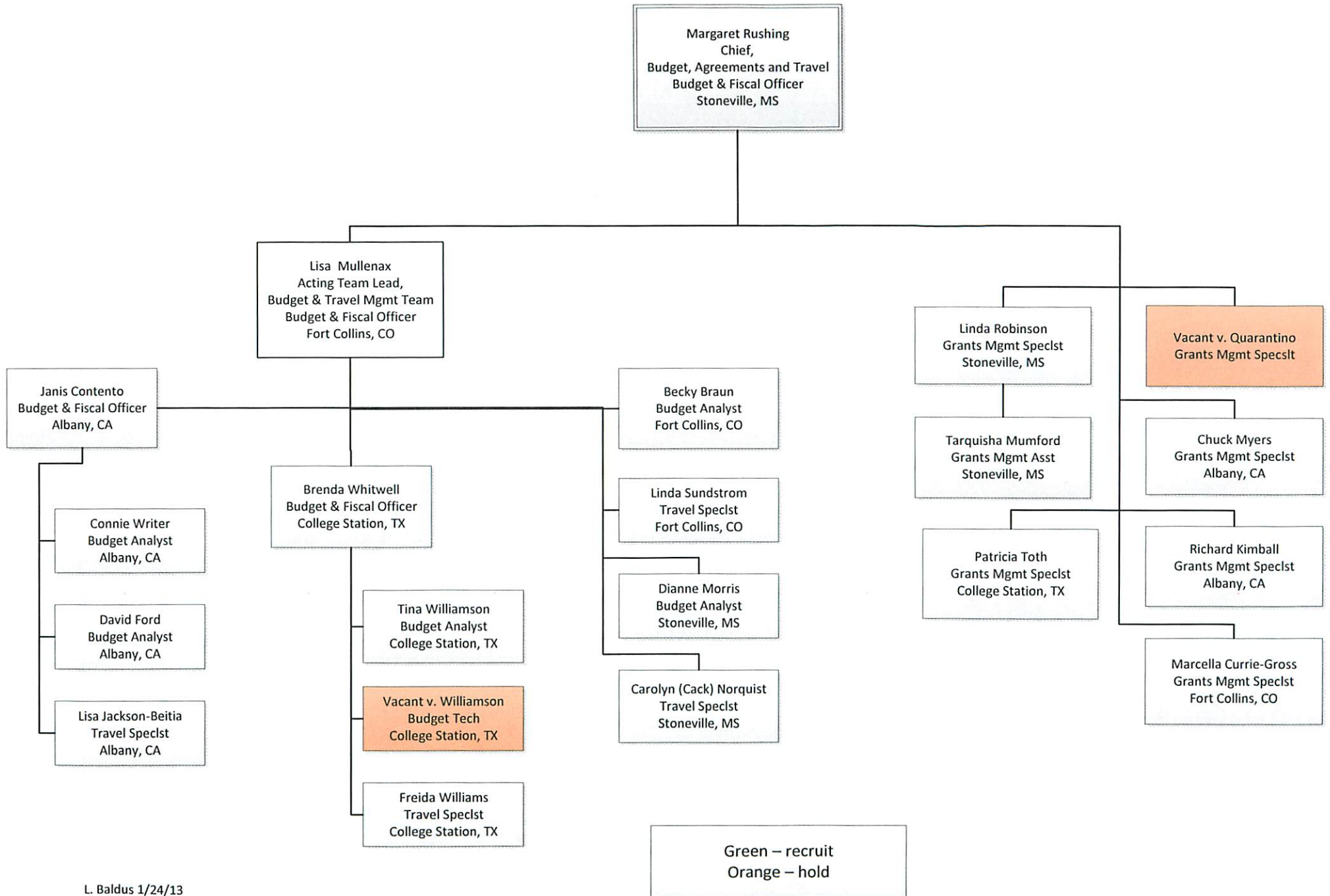


Western Business Service Center – Human Resources Chart #2



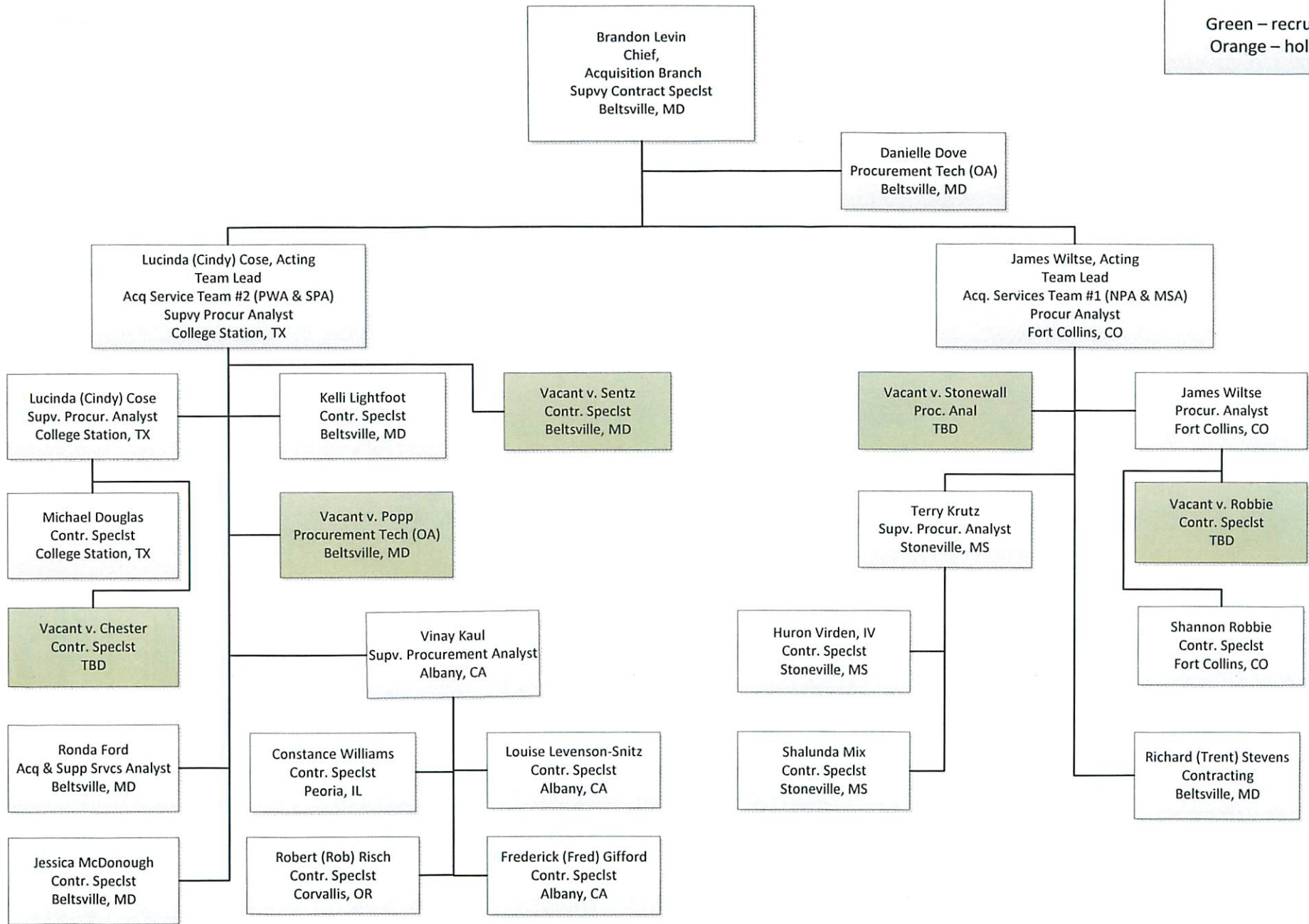
Green – recruit  
Orange – hold

Western Business Service Center – Budget, Travel and  
 Agreements Branch  
 Chart #3

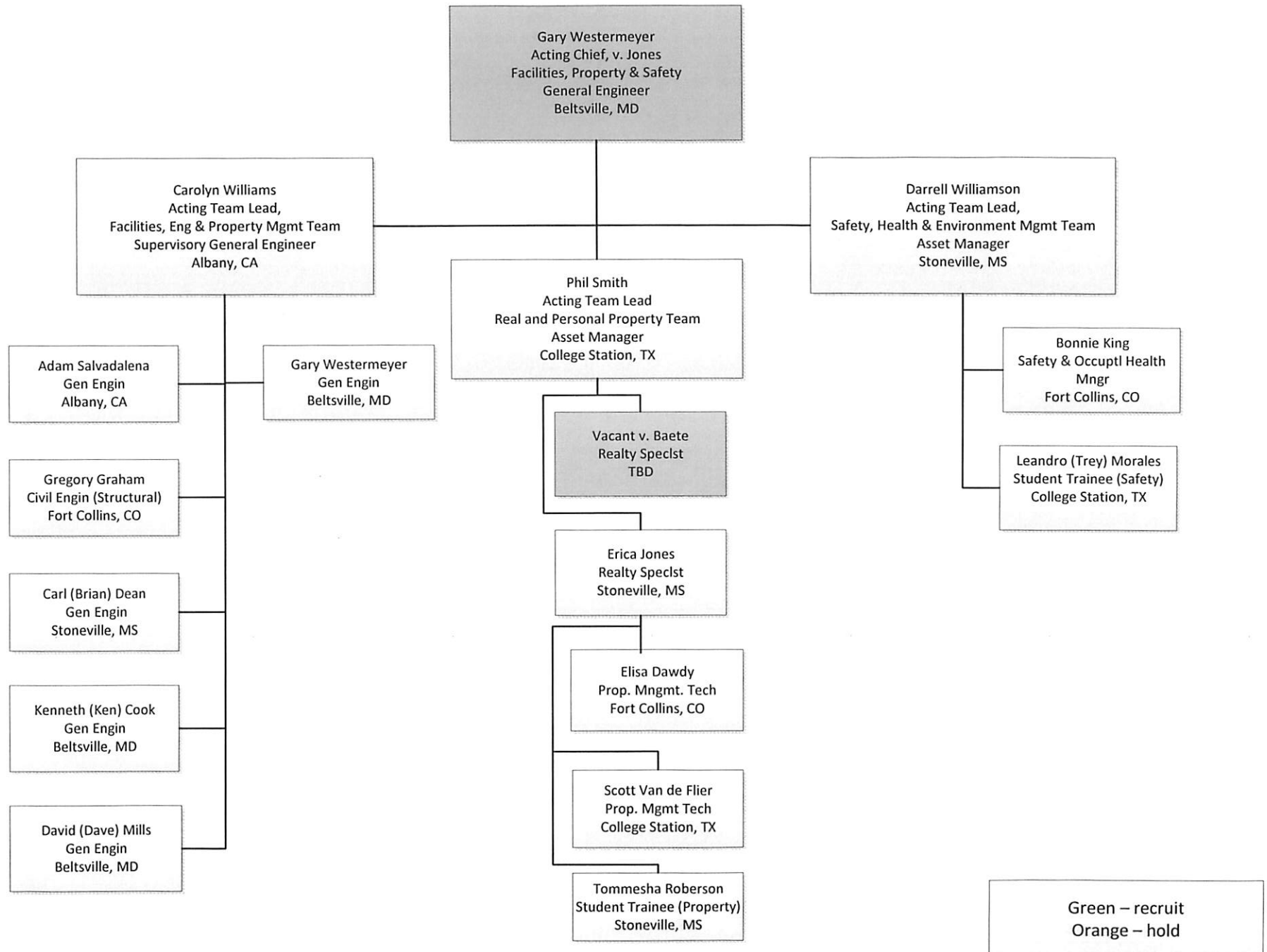


Western Business Service Center – Acquisition Branch  
Chart #4

Green – recruit  
Orange – hold



Western Business Service Center – Facilities, Property and Safety Branch  
Chart #5



Western Business Service Center – Information Technology Management  
Chart #6

