



Plumb's Veterinary Drug Handbook

The use of this handbook will initially require you to “map” your computer to a shared network drive. This will only have to be done once, and then on subsequent uses, you will be able to go directly to the formulary. Mapping to a shared “Z” drive is simple and the following pages will take you through a step-by-step process to establish this on your computer. If you have any questions regarding these directions or problems with the process, then please contact the NIH CIT Help Desk at 301-594-3278 for assistance.

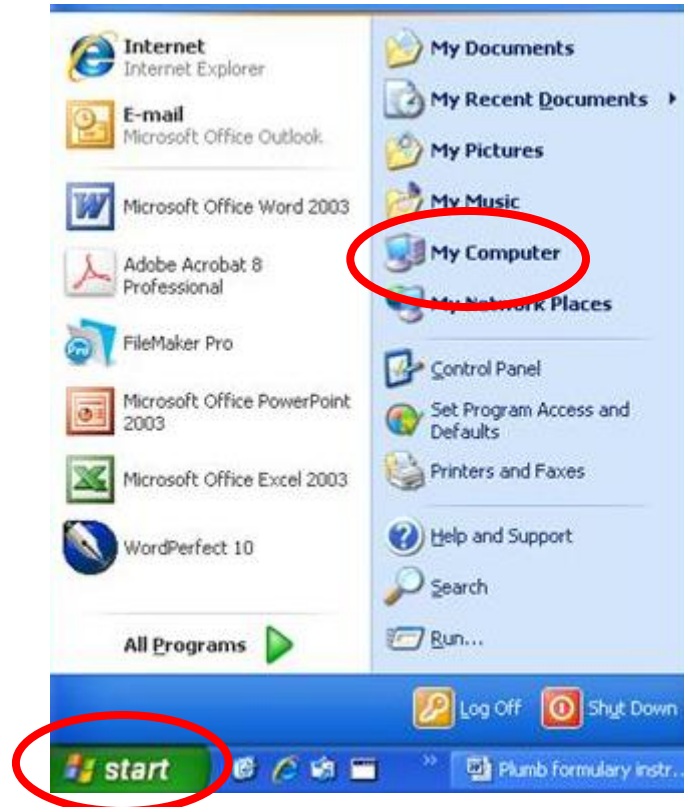
Unfortunately, this application will not install on Macintosh computers. If you need availability to this information you will need to access it from a Windows (XP)-based computer that is connected to the NIH network.

This formulary is provided on a proprietary site license and as such has been limited to viewing within the intramural research program from an NIH computer.

How to “Map” to a Shared Network Drive

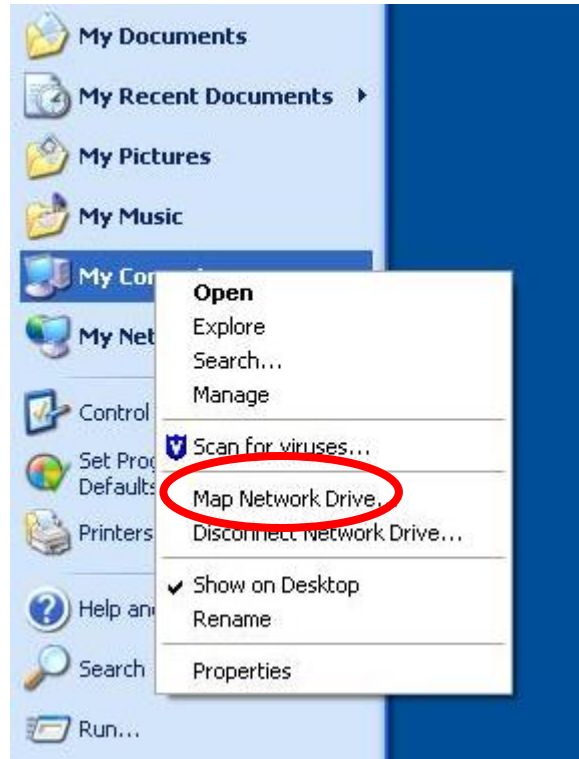
Step 1: this process requires the use of the Windows XP operating system or newer applications.

Step 2: left click the “start” button at the lower left of your desktop screen and right click on the “my computer” icon.



How to “Map” to a Shared Network Drive

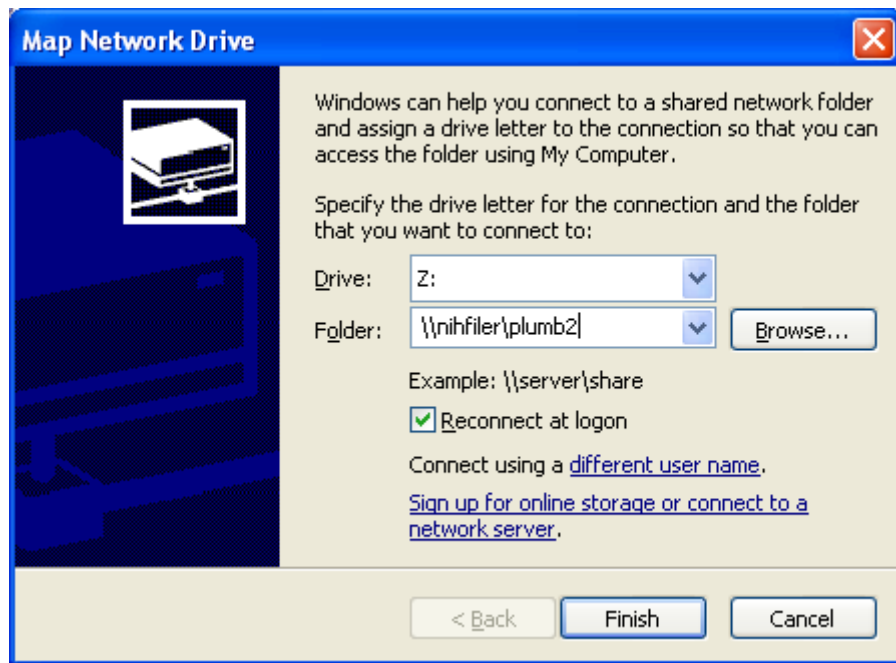
Step 3: left click the option “Map Network Drive...”



How to “Map” to a Shared Network Drive

Step 4: a “Map Network Drive” window will open;

- in the “Drive” box type in or select “Z:”
- in the “Folder” box type in: \\nihfiler\plumb2
- select “reconnect at logon”
- press the “finish” button



How to “Map” to a Shared Network Drive

Step 5: open your “my computer” icon with a *left* click and you will see “plumb2 on ‘nihfiler’ (Z:)” as part of your network drives.

- Open the “Z:” drive by double left click
- Open the formulary by double left click on “plumb2 on nihfiler” icon

