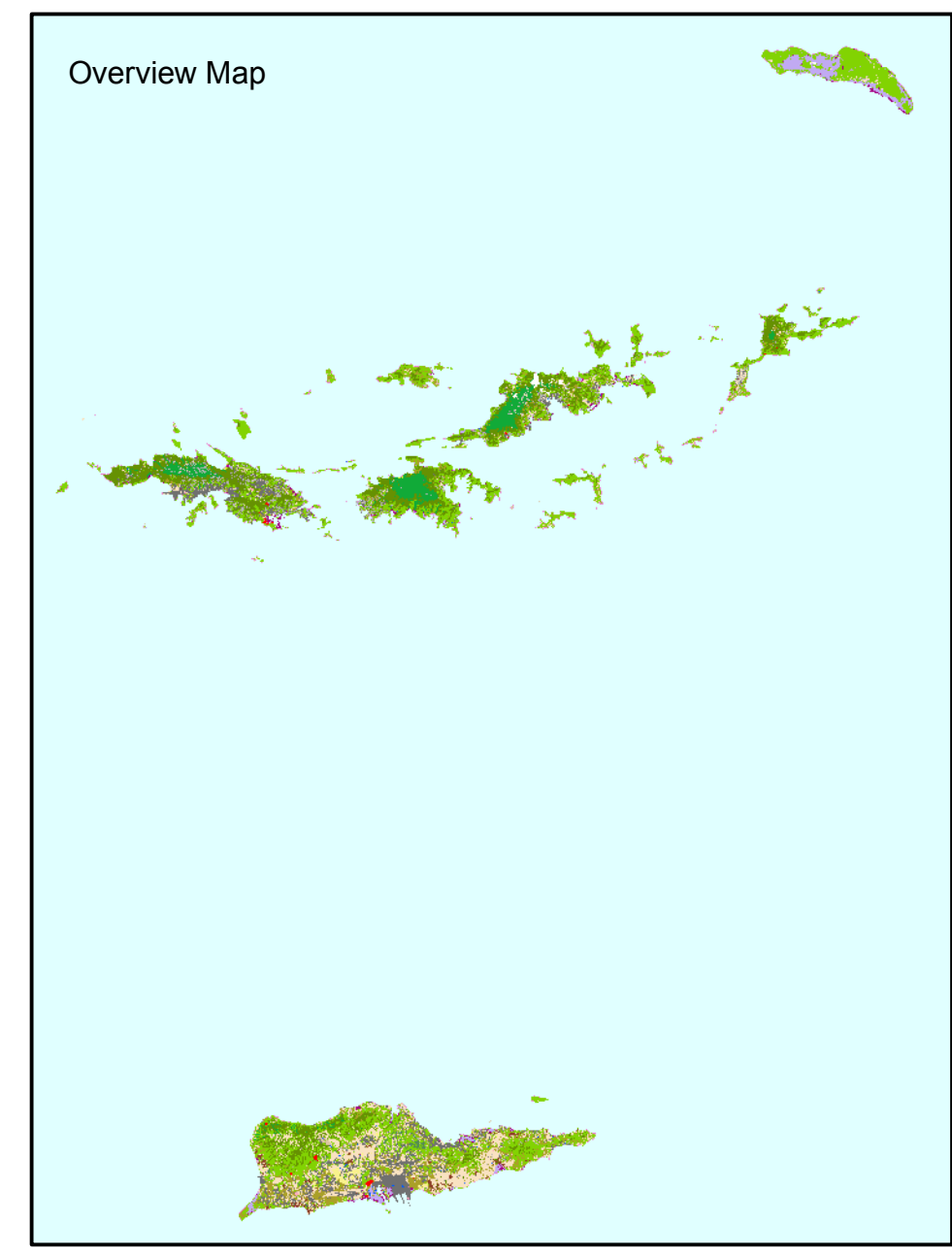
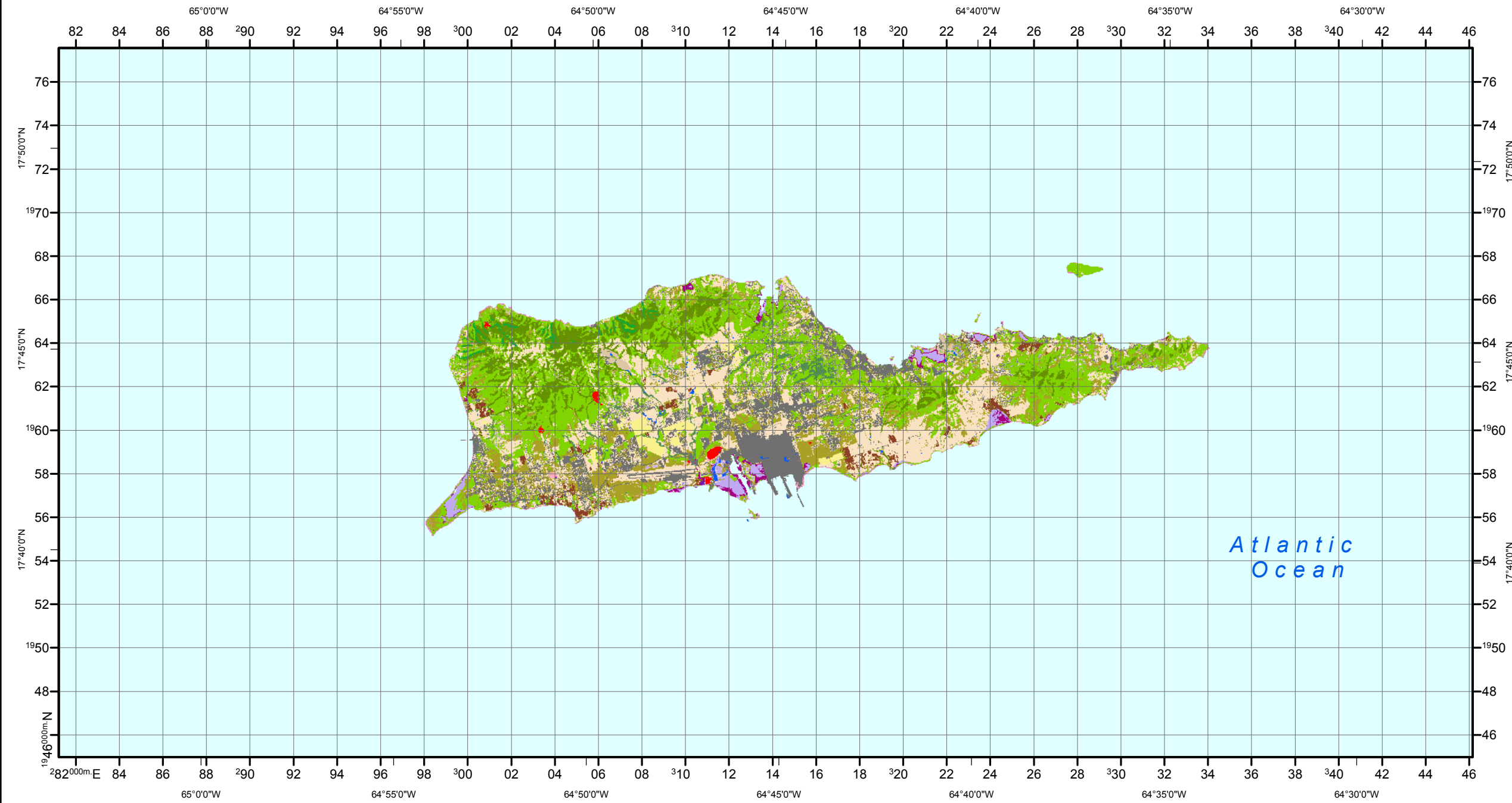
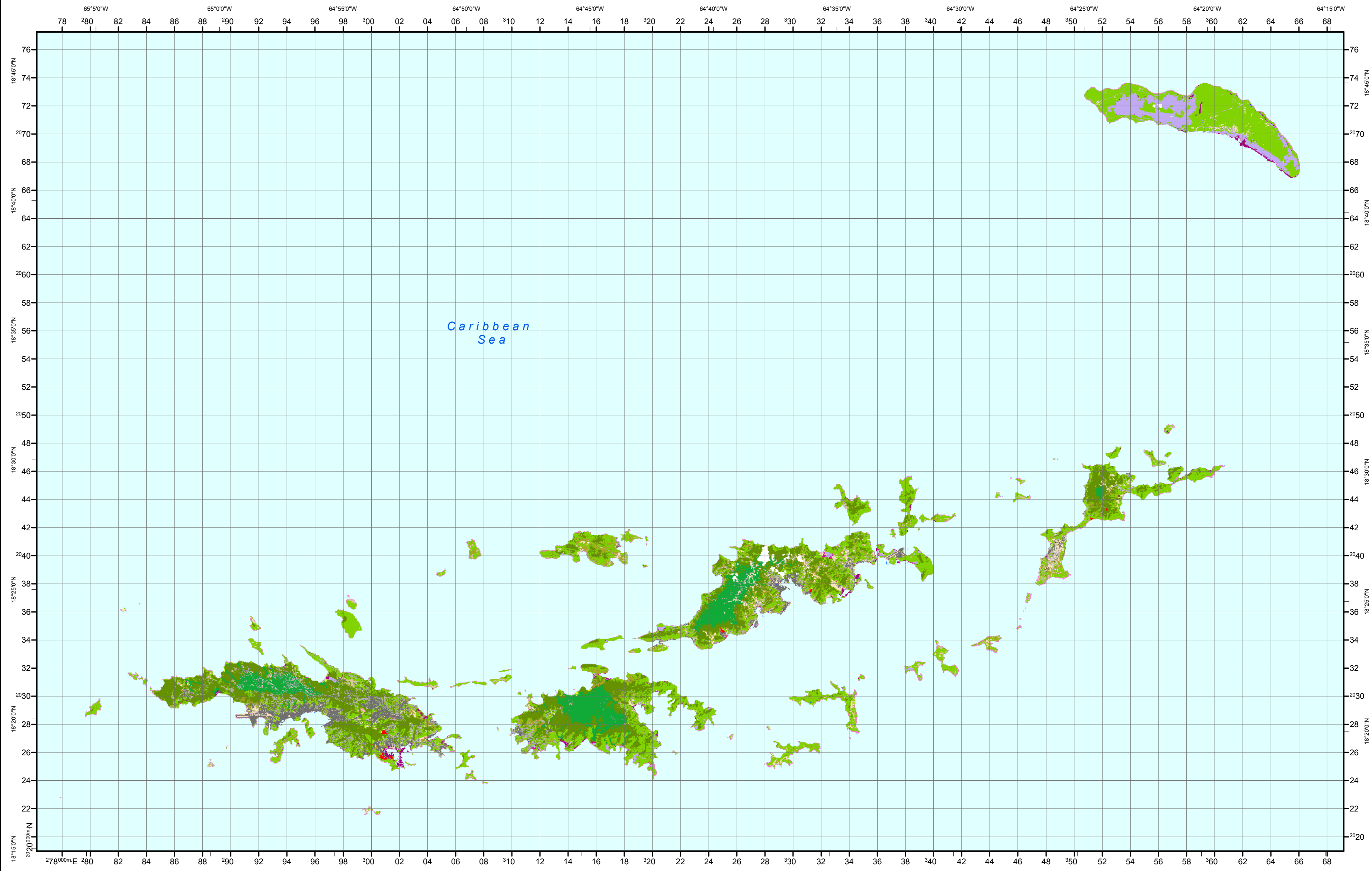


# 2001 Virgin Islands Land Cover and Forest Formations

October 2009



- |  |   |  |
|--|---|--|
| <p><b>Urban or Built-up Land</b></p> <ul style="list-style-type: none"> <li><span style="display: inline-block; width: 10px; height: 10px; background-color: #808080; border: 1px solid black;"></span> High-Medium Density Urban or Built-up Land</li> <li><span style="display: inline-block; width: 10px; height: 10px; background-color: #A9A9A9; border: 1px solid black;"></span> Low Density Built-up Land (Rural or Residential)</li> </ul> <p><b>Agricultural Land</b></p> <ul style="list-style-type: none"> <li><span style="display: inline-block; width: 10px; height: 10px; background-color: #FFD700; border: 1px solid black;"></span> Herbaceous Agriculture - Cultivated Land</li> <li><span style="display: inline-block; width: 10px; height: 10px; background-color: #FFD700; border: 1px solid black;"></span> Woody Agriculture - Other Classes</li> <li><span style="display: inline-block; width: 10px; height: 10px; background-color: #FFD700; border: 1px solid black;"></span> Pasture, Hay or Inactive Agriculture (e.g. abandoned sugar cane)</li> <li><span style="display: inline-block; width: 10px; height: 10px; background-color: #FFD700; border: 1px solid black;"></span> Pasture, Hay or other Grassy Area</li> </ul> <p><b>Rangeland, Natural Grassland, Natural Shrubland</b></p> <ul style="list-style-type: none"> <li><span style="display: inline-block; width: 10px; height: 10px; background-color: #8B4513; border: 1px solid black;"></span> Drought Deciduous Open Woodland</li> </ul> | <p><b>Forest including Forest/Shrub Land</b></p> <ul style="list-style-type: none"> <li><span style="display: inline-block; width: 10px; height: 10px; background-color: #90EE90; border: 1px solid black;"></span> Broadleaf Drought Deciduous or Semi-Deciduous Forest, Lowland or Submontane (Dry, Dry-Moist)</li> <li><span style="display: inline-block; width: 10px; height: 10px; background-color: #90EE90; border: 1px solid black;"></span> Deciduous, Evergreen Coastal and Mixed Forest or Shrubland, with or without Succulents (Volcanic, Alluvial or Limestone Substrates)</li> <li><span style="display: inline-block; width: 10px; height: 10px; background-color: #90EE90; border: 1px solid black;"></span> Drought Deciduous Forest/Shrub (in Puerto Rico, Drought Deciduous Dense Woodland; in Dominican Republic, includes Forest/Shrub in moist zones)</li> <li><span style="display: inline-block; width: 10px; height: 10px; background-color: #90EE90; border: 1px solid black;"></span> Semi-Deciduous and Drought Deciduous Forest (includes Semi-Evergreen Forest)</li> <li><span style="display: inline-block; width: 10px; height: 10px; background-color: #90EE90; border: 1px solid black;"></span> Semi-Deciduous and Drought Deciduous Forest on Karst or other Limestone (includes Semi-Evergreen Forest)</li> <li><span style="display: inline-block; width: 10px; height: 10px; background-color: #90EE90; border: 1px solid black;"></span> Broadleaf Seasonal Evergreen and Evergreen Forest, Lowland or Submontane (Moist, Wet, Rain)</li> <li><span style="display: inline-block; width: 10px; height: 10px; background-color: #90EE90; border: 1px solid black;"></span> Seasonal Evergreen and Evergreen Forest</li> <li><span style="display: inline-block; width: 10px; height: 10px; background-color: #90EE90; border: 1px solid black;"></span> Seasonal Evergreen Forest with Coconut Palm</li> </ul> | <p><b>Wetland</b></p> <ul style="list-style-type: none"> <li><span style="display: inline-block; width: 10px; height: 10px; background-color: #E6E6FA; border: 1px solid black;"></span> Nonforested Wetland</li> <li><span style="display: inline-block; width: 10px; height: 10px; background-color: #E6E6FA; border: 1px solid black;"></span> Salt or Mud Flat</li> <li><span style="display: inline-block; width: 10px; height: 10px; background-color: #E6E6FA; border: 1px solid black;"></span> Forested Wetland</li> <li><span style="display: inline-block; width: 10px; height: 10px; background-color: #800080; border: 1px solid black;"></span> Mangrove</li> <li><span style="display: inline-block; width: 10px; height: 10px; background-color: #800080; border: 1px solid black;"></span> Seasonally Flooded Savannah and Woodland</li> </ul> <p><b>Barren Land</b></p> <ul style="list-style-type: none"> <li><span style="display: inline-block; width: 10px; height: 10px; background-color: #FF0000; border: 1px solid black;"></span> Quarry</li> <li><span style="display: inline-block; width: 10px; height: 10px; background-color: #FF0000; border: 1px solid black;"></span> Coastal Sand and Rock</li> <li><span style="display: inline-block; width: 10px; height: 10px; background-color: #FF0000; border: 1px solid black;"></span> Bare Soil (including bulldozed land)</li> </ul> <p><b>Water</b></p> <ul style="list-style-type: none"> <li><span style="display: inline-block; width: 10px; height: 10px; background-color: #0000FF; border: 1px solid black;"></span> Water - Permanent</li> </ul> <p><b>Other</b></p> <ul style="list-style-type: none"> <li><span style="display: inline-block; width: 10px; height: 10px; border: 1px solid black;"></span> Cloud</li> </ul> |
|--|---|--|

  
**UTM - Zone 20**  
**WGS84**

Scale 1:200,000

0 1 2 4 6 8 Kilometers

0 1 2 4 6 8 Miles

Land cover and forest type data developed by the Warner College of Natural Resources of Colorado State University (CSU) in conjunction with the International Institute of Tropical Forestry - USDA Forest Service. Landsat satellite imagery provided by the U.S. Geological Survey. Cartography by Marie Heild from the Center for Environmental Management of Military Lands, CSU. The data shown here are generalized from the data in the citation below to fit with a Caribbean-wide classification scheme.

Kennaway, T., Helmer, E. H., Lefsky, M. A., Brandeis, T. A., Ruzycski, T. 2009. Mapping land cover and estimating forest structure using satellite imagery and coarse resolution lidar in the Virgin Islands. *Journal of Applied Remote Sensing* 2:023551, DOI:10.1117/1.3063939.

