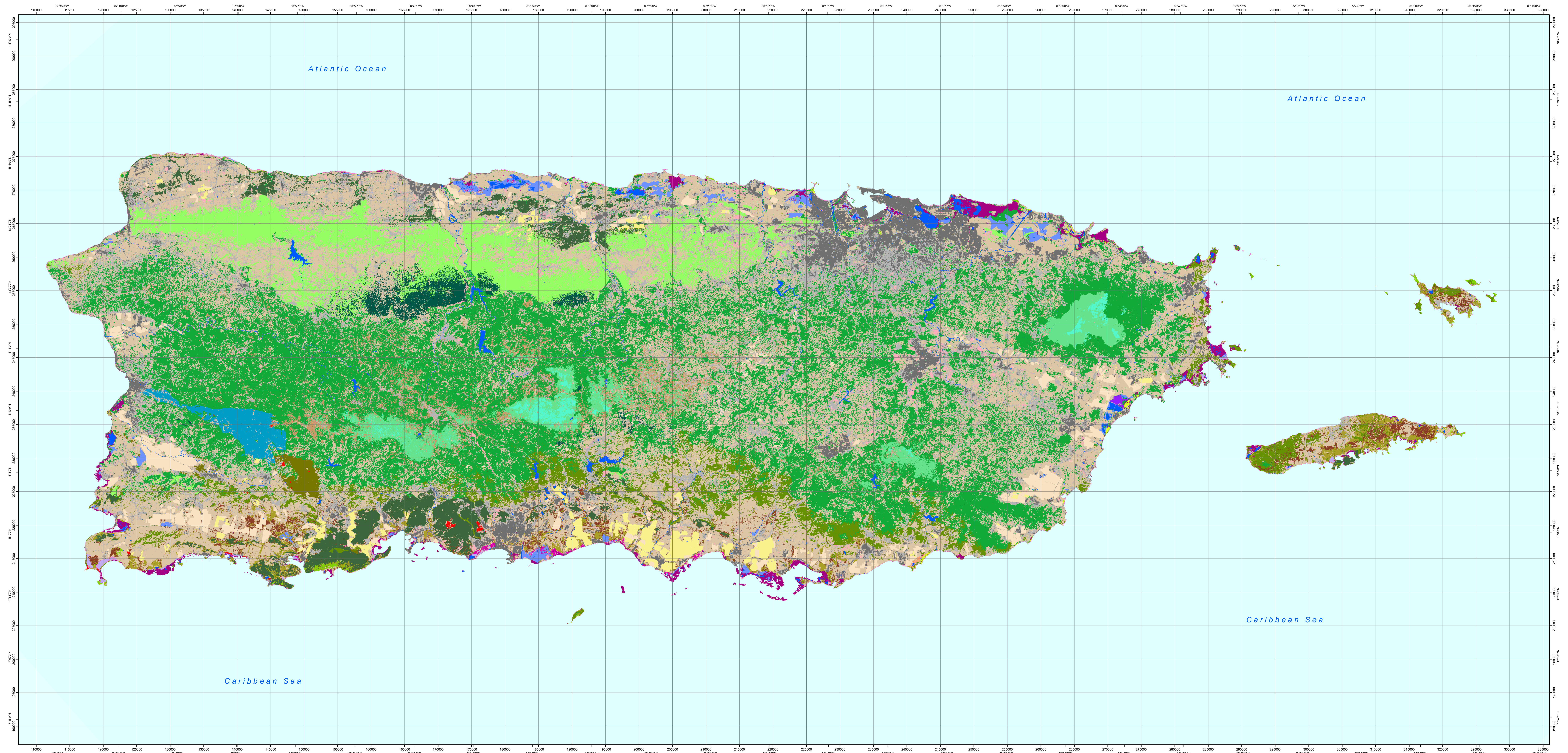


2000 Puerto Rico Land Cover and Forest Formations

October 2007



- Urban or Built-up Land**
 - High-Medium Density Urban or Built-up Land
 - Low-Medium Density Built-up Land (Rural or Residential)
- Agricultural Land**
 - Sugar Cane, Fruits and Other Crops on Alluvial Soils
 - Active Sun Coffee and Mixed Woody Agriculture
 - Pasture, Hay or Inactive Agriculture (e.g. abandoned sugar cane)
 - Pasture, Hay or other Grassy Areas
- Rangeland, Natural Grassland, Natural Shrubland**
 - Drought Deciduous Open Woodland
- Forest including Forest/Shrub Land**
 - Broadleaf Drought Deciduous or Semi-Deciduous Forest, Lowland or Submontane (Dry, Dry-Moist)
 - Deciduous, Evergreen Coastal and Mixed Forest or Shrubland, with or without Succulents
 - Drought Deciduous Dense Woodland
 - Semi-Deciduous and Drought Deciduous Forest on Alluvium and Non-Carbonate Substrates
 - Semi-Deciduous and Drought Deciduous Forest on Karst or other Limestone (includes Semi-Evergreen Forest)
 - Drought Deciduous, Semi-Deciduous and Seasonal Evergreen Forest on Serpentine, sclerophyllous
 - Broadleaf Seasonal Evergreen and Evergreen Forest, Lowland or Submontane (Most, Wet, Rain)
 - Seasonal Evergreen and Semi-Deciduous Forest on Karst
 - Seasonal Evergreen and Evergreen Forest
 - Seasonal Evergreen Forest with Coconut Palm
 - Evergreen and Seasonal Evergreen Forest on Karst or other Limestone
 - Evergreen Forest on Serpentine, sclerophyllous
 - Broadleaf Evergreen Cloud Forest, Submontane or Lower Montane (Wet, Rain)
 - Sierra Palm, Transitional and Tall Cloud Forest
 - Elfin and Sierra Palm Cloud Forest
- Wetland**
 - Nonforested Wetland
 - Emergent Wetland including Seasonally Flooded Pasture
 - Salt or Mud Flat
 - Forested Wetland
 - Mangrove
 - Seasonally Flooded Savannah and Woodland
 - Palustrine Swamp
 - Totally Flooded Evergreen Dwarf-Shrubland and Forb Vegetation
- Barren Land**
 - Quarry
 - Coastal Sand and Rock
 - Bare Soil (including bulldozed land)
- Water**
 - Water - Permanent

Lambert Conformal Conic (State Plane)
NAD83

Scale 1:200,000

0 1 2 3 4 5 6 7 8 9 10
Kilometers

0 1 2 3 4 5 6 7 8 9 10
Miles

Kenney, T. and E. H. Helmer. 2007. The Forest Types and Ages Cleared for Land Development in Puerto Rico. *GIScience & Remote Sensing* 44(4): 356-382.

Land cover data was compiled by the USDA Forest Service (USFS) International Institute of Tropical Forestry and the Center for Environmental Management of Military Lands, Colorado State University as part of the USFS Caribbean Forest Inventory and Analysis (FIA) program, as well as part of a joint project between USFS - USGS - Center for EROS, NASA, CSU - CEMML, and USAID - Caribbean Program Office. Landfill imagery provided by NASA - GOCF, USGS - Center for EROS, and IITF. The classification used a cloud-free Landsat image mosaic developed in cooperation with the USFS Remote Sensing Applications Center (Helmer, E. and S. Ruettenacht, PERS 71 (j) : 1079-1089, 2005).

