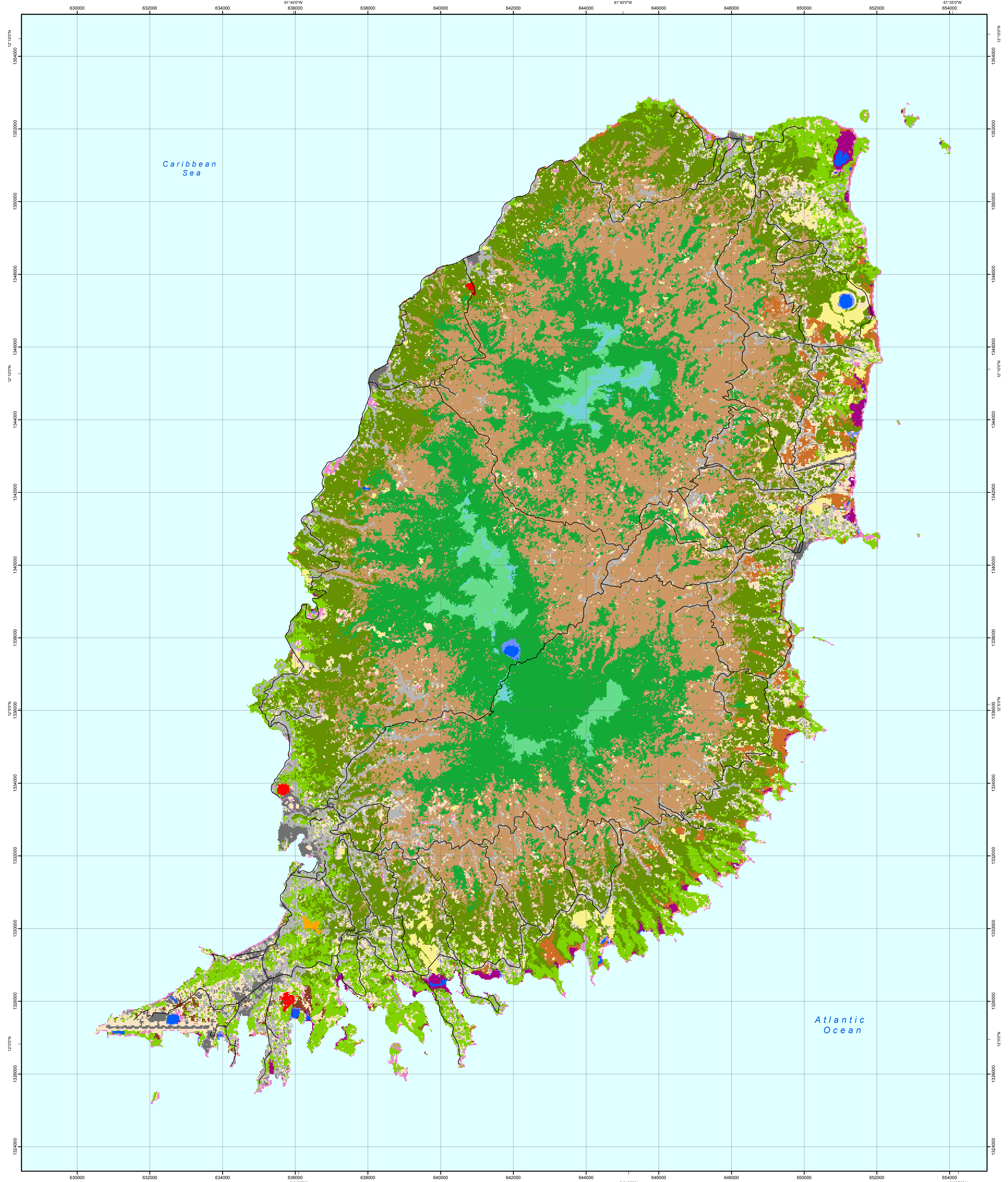


# 2001 Grenada Land Cover and Forest Formations

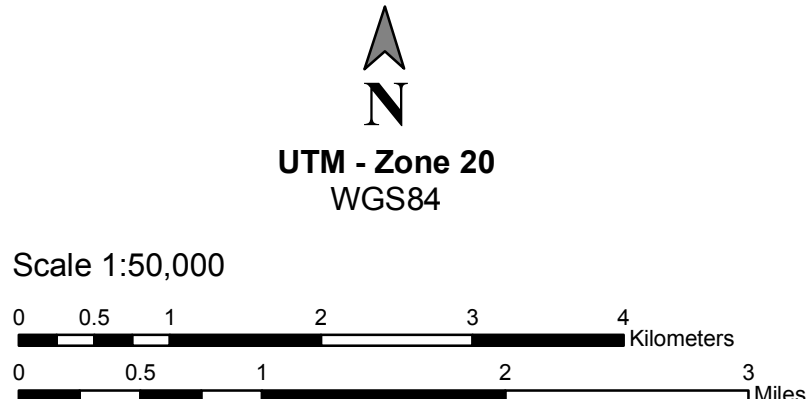
December 2006



- Urban or Built-up Land**
- High-Medium Density Urban or Built-up Land
  - Low Density Built-up Land (Rural or Residential)
- Agricultural Land**
- Herbaceous Agriculture - Cultivated Lands
  - Nutmeg and Mixed Woody Agriculture
  - Coconut Palm and Mixed Woody Agriculture (Cacao, Banana, other)
- Rangeland, Natural Grassland, Natural Shrubland**
- Pasture, Hay or Inactive Agriculture
  - Golf Course
  - Drought Deciduous Open Woodland

- Forest including Forest/Shrub Land**
- Broadleaf Drought Deciduous or Semi-Deciduous Forest, Lowland or Submontane (Dry, Dry-Moist)
  - Deciduous, Evergreen Coastal and Mixed Forest or Shrubland, with or without Succulents
  - Semi-Deciduous Forest
  - Broadleaf Seasonal Evergreen and Evergreen Forest, Lowland or Submontane (Moist, Wet, Rain)
  - Seasonal Evergreen and Evergreen Forest
  - Broadleaf Evergreen Cloud Forest, Submontane or Lower Montane (Wet, Rain)
  - Sierra Palm, Transitional and Tall Cloud Forest
  - Elfin and Sierra Palm Cloud Forest

- Wetland**
- Nonforested Wetland
  - Emergent Wetland - Mixed
  - Forested Wetland
  - Mangrove
- Barren Land**
- Quarry
  - Coastal Sand and Rock
- Water**
- Water - Permanent
- Other Features**
- Primary Roads



Land cover data developed by the Center for Environmental Management of Military Lands at Colorado State University in conjunction with the International Institute of Tropical Forestry - USDA Forest Service in 2004, as part of a joint project between USFS, USGS - Center for EROS, TNC, NASA, CSU - CEMML, USAID - Caribbean Program Office and the Grenada Ministry of Agriculture, Land, Fisheries and Forestry (Forestry and National Parks Department and Land Use Division). Landsat imagery provided by NASA - GFOC, USGS - Center for EROS, and ITIF.

Helmer, E.H., Kennaway, T.A., Pedreros, D.H., Clark, M.L., Marcano-Vega, H., Tieszen, L.L., Ruzicki, T.S., Schill, S.R., and Carrington, C.M.S. 2008. Land cover and forest formation distributions for St. Kitts, Nevis, St. Eustatius, Grenada and Barbados from decision tree classification of cloud-cleared satellite imagery. *Caribbean Journal of Science*. 44(2): 175-198.

