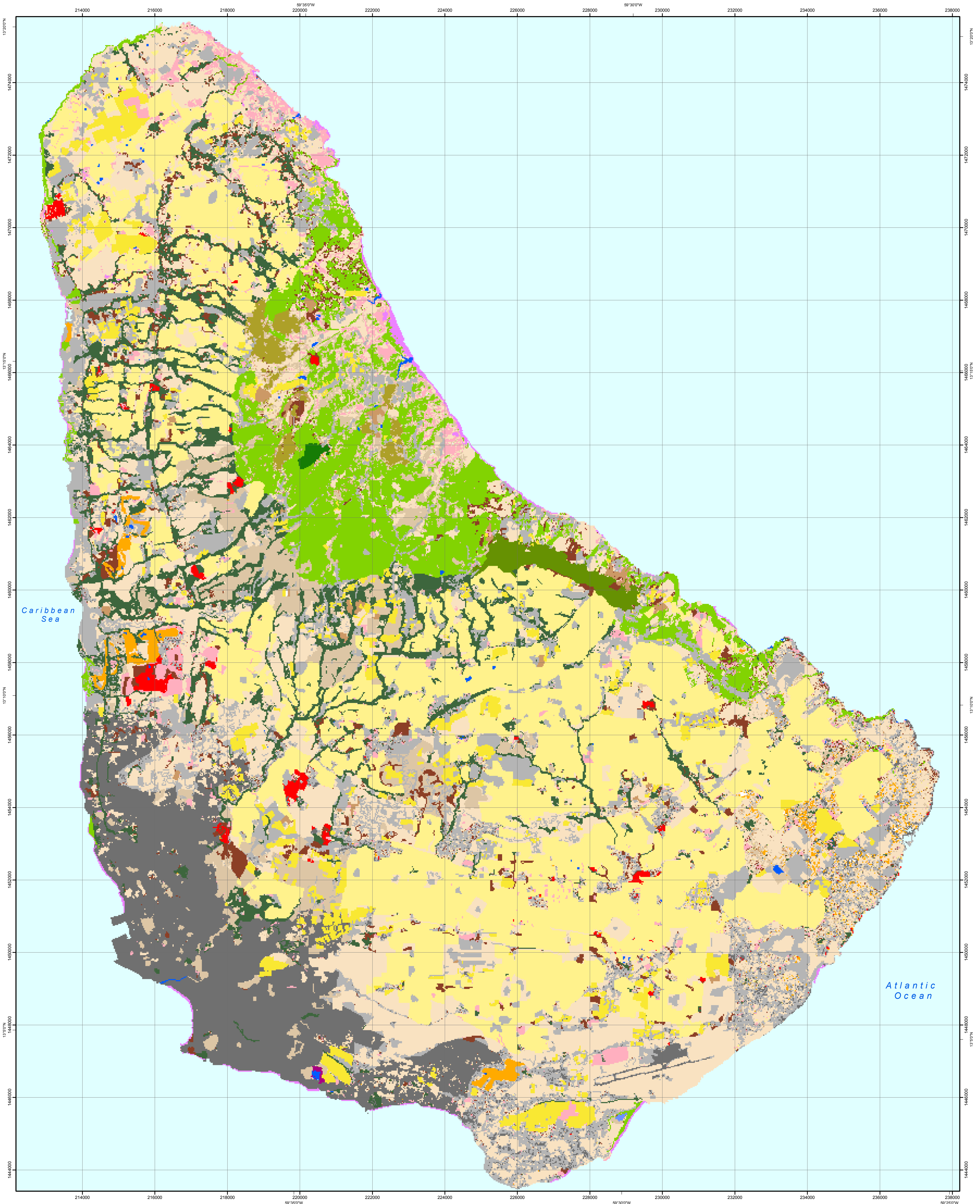


2001 Barbados Land Cover and Forest Formations

September 2009



- Urban or Built-up Land**
 - High-Medium Density, 3834 hectares
 - Low Density, 5377 hectares
- Agricultural Land**
 - Herbaceous Agriculture - Cultivated Land, 11706 hectares
 - Sugar Cane
 - Root Crops
 - Other Herbaceous Agriculture and Intensively Cultivated Land, 1692 hectares
 - Mixed and Woody Agriculture - Mixed Classes, 248 hectares
 - Active Sun Coffee and Mixed Woody Agriculture
 - Nutmeg and Mixed Woody Agriculture
 - Coconut, Coconut-Banana or Coconut-Banana-Root Crops
 - Pasture, Hay or Inactive Agriculture (e.g. abandoned sugar cane), 8768 hectares
 - Pasture, Hay or other Grassy Area (e.g. soccer fields), 2471 hectares
 - Golf Course, 308 hectares

- Rangeland, Natural Grassland, Natural Shrubland**
 - Drought Deciduous Open Woodland, 1079 hectares
- Forest including Forest/Shrub Land**
 - Drought Deciduous or Semi-Deciduous (Dry, Dry-Moist)
 - Drought Deciduous Forest / Shrub and Deciduous, Evergreen Coastal and Mixed Forest or Shrubland, with or without Succulents, 2917 hectares
 - Drought Deciduous Forest / Shrub, 263 hectares
 - Semi-Deciduous and Drought Deciduous Forest (includes Semi-Evergreen Forest), 277 hectares
 - Semi-Deciduous and Drought Deciduous Forest on Karst or other Limestone (includes Semi-Evergreen Forest), 2864 hectares
 - Evergreen (Moist, Moist-Wet, Rain)
 - Seasonal Evergreen Forest, 34 hectares

- Wetland**
 - Nonforested Wetland
 - Emergent Wetland - Mixed, 4 hectares
 - Forested Wetland
 - Mangrove, 7 hectares
- Barren Land**
 - Quarry, 200 hectares
 - Coastal Sand and Rock, 171 hectares
 - Bare Soil (including bulldozed land), 1076 hectares
- Water**
 - Water - Permanent, 55 hectares
- Cloud**
 - Cloud, 10 hectares

Scale 1:50,000

UTM - Zone 21
WGS84

Land cover data developed by the USGS - Center for EROS (EROS) in conjunction with the International Institute of Tropical Forestry - USDA Forest Service (IITF) in 2005, as part of a joint project between IITF, EROS, TNC, NASA, CSU - CEMML, and USAID, with the collaboration from the Ministry of Energy and the Environment of Barbados. Landsat imagery provided by NASA, EROS, and IITF.

Pederos, D.H.R., Helmer, E.H., Clark, M., Carrington, S., Albright, T.P., Tieszen, L.L., Walkey, J.A., Smith, A., Eckelmann, C., Held, M., Ruzicky, T. Map of land cover and forestry formations of Barbados.

Citation: Helmer, E.H., Kennaway, T.A., Pederos, D.H., Clark, M.L., Marcano-Vega, H., Tieszen, L.L., Ruzicky, T.S., Schil, S.R., Carrington, C.M.S. 2008. Land cover and forest formation distributions for St. Kitts, Nevis, St. Eustatius, Grenada and Barbados from decision tree classification of cloud-cleared satellite imagery. *Caribbean Journal of Science*. 44(2): 175-198.

