

EPA Overview and the Need to Quantify Results



Kentucky Agriculture Science
and Monitoring Committee
Executive Meeting

April 5th, 2012

EPA & KASMC

EPA Region 4 is looking to work closely with state and federal partners to achieve shared environmental goals via watershed restoration and protection projects.



EPA Funding

- EPA Water Focused Funding
 - 106 state program grant
 - 319 Non point source grants
 - 104 Wetlands Grants
 - CWA SRF
- Urban Waters
- Healthy Watersheds Initiative
- Targeted Watershed Grants



EPA 319 NonPoint Source Funding

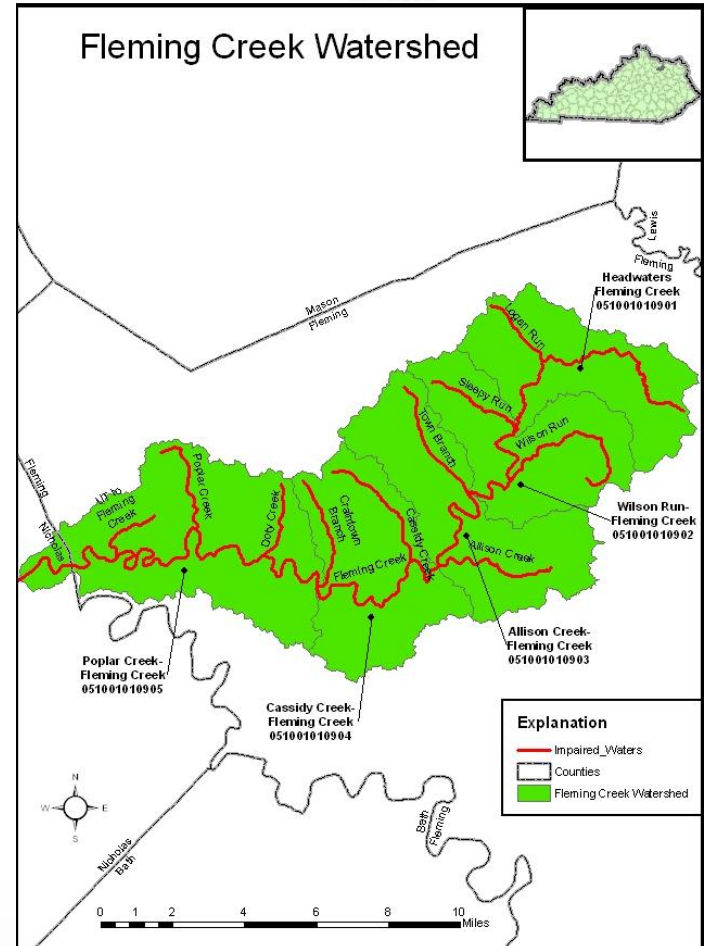
- EPA 319(h) Funds
- Remediation and removal of over 355 waterbodies from CWA 303(d) lists of impaired waters (2005-2011).
- Watershed-based planning and implementation has allowed state NPS programs to effectively and cost-efficiently identify and “target” NPS problem areas



Telling the Story

Communicating Success

- 319(h) WQ10 - <http://water.epa.gov/polwaste/nps/success319/>
- EPA's Strategic Plan (measure 12) – Watershed Improvement Summaries
- http://www.epa.gov/region4/water/watersheds/watershed_summaries.html



Floyds Fork Watershed

- \$420,000 – TMDL Watershed and Water Quality Model Development for Nutrients
 - 3 Public Meetings in Louisville, KY
 - Next Meeting in June, 2012
- State led Stakeholder Engagement Process
 - Watershed Center of Excellence (KWRRI)



Recovery Potential – Kentucky Pilot

- Tool for Prioritization and Planning – State Tool
- Step 1: Kickoff Meeting
 - Goals and Objectives
 - Selection of Indicators
 - Ecological
 - Stressors
 - Social
- Step 2: Data crunching
 - HQ & Contractor Support (Barry Topping – Tetra Tech)
- Step 3: Running Scenarios
- Step 4: State Tool



Nutrients

1. 50% of U.S. streams have medium to high levels of nitrogen and phosphorus.
2. 78% of assessed coastal waters exhibit eutrophication.
3. Nitrate drinking water violations have doubled in eight years
4. 2010 USGS Report
 - nitrates exceeded background concentrations in 64% of shallow monitoring wells in agriculture and urban areas,
 - and exceeded EPA's MCLs for nitrates in 7% or 2,388 of sampled domestic wells.
5. Algal blooms are steadily on the rise; related toxins have potentially serious health and ecological effects.



Optional Nutrient Framework

- Stoner Memo -Recommended Elements of a State Framework for Managing N&P Pollution
 1. Prioritize watersheds on a statewide basis for nitrogen and phosphorus loading reductions
 2. Set watershed load reduction goals based upon best available information
 3. Ensure effectiveness of point source permits in targeted/priority sub-watersheds for:
 - Municipal and Industrial Wastewater Treatment Facilities that contribute to significant measurable N & P loadings;
 - All CAFOs that discharge or propose to discharge; and/or
 - Urban Stormwater sources that discharge into N & P-impaired waters or are otherwise identified as a significant source.
 4. Agricultural Areas
 5. Storm water and Septic systems
 6. Accountability and verification measures
 7. Annual public reporting of implementation activities and biannual reporting of load reductions and environmental impacts associated with each management activity in targeted watersheds
 8. Develop work plan and schedule for numeric criteria development



Other EPA Resources

- EPA Provides Ag Targeted Funding through a Variety of Other Programs:
 - Climate Change/Renewable Energy
 - Environmental Stewardship
 - RCRA
 - Examples of Agriculture Projects in Region 4:
http://www.epa.gov/region4/agriculture/ag_projects.html
- The National Agriculture Compliance Assistance Center
 - Provides Ag Community info on compliance with environmental regulations
 - Offered by USEPA with support of USDA
 - <http://www.epa.gov/agriculture/agctr.html>
 - Publications from Ag Center (<http://www.epa.gov/agriculture/publications.html>)
 - BMPs
 - Livestock Environmental Stewardship Brochures



EPA Personnel Resources

- Marjan Farzaad
 - Chief, NonPoint Source and Stormwater Section
 - Farzaad.marjan@epa.gov
 - 404-562-9420
- Duane Robertson
 - Agriculture Coordinator
 - Robertson.duane@epa.gov
 - 404-562-9398
- Amy Newbold
 - Kentucky Watershed Coordinator
 - Newbold.amy@epa.gov
 - 404-562-9482
- Christine McKay
 - Kentucky 319 Coordinator
 - Mckay.christine@epa.gov
 - 404-562-9412

