



**Peace Corps Volunteer
2009 Annual Volunteer Survey**

**Global Report
October 16, 2009**

Office of Strategic Information, Research and Planning

Table of Contents

<u>Introduction to the 2009 Annual Volunteer Survey Report</u>	<u>3</u>
<u>Overview of the Post's 2009 Volunteer Survey Respondents.....</u>	<u>4</u>
<u>A. Applying to the Peace Corps.....</u>	<u>6</u>
<u>B. Preparation for the Peace Corps.....</u>	<u>8</u>
<u>C. Your Peace Corps Assignment</u>	<u>9</u>
<u>D. Training for Peace Corps Assignment</u>	<u>13</u>
<u>E. Volunteer Assignment Goals and Impact.....</u>	<u>16</u>
<u>F. Peace Corps Support.....</u>	<u>23</u>
<u>G. Your Safety and Security</u>	<u>29</u>
<u>H. Volunteers Working in HIV/AIDS</u>	<u>38</u>
<u>I. Your Life in the Peace Corps</u>	<u>39</u>
<u>J. Overall Assessment of Peace Corps Service</u>	<u>42</u>
<u>K. Activities After Peace Corps Service.....</u>	<u>51</u>

Introduction to the 2009 Annual Volunteer Survey Report

This country report contains the tables and charts from the Volunteers in your country who completed the 2009 Annual Volunteer Survey (AVS). The results provide a picture of the activities, experiences and views of Peace Corps Volunteers in 2009. The results show areas where Volunteers' needs are met and identify areas where improvements may be needed. The survey was fielded from May through August 2009.

A core set of questions was asked of all Volunteers. For the first time, Volunteers were also asked a series of questions relevant to their time in country:

- Volunteers in country 8 or less months were asked about applying to and preparing for the Peace Corps.
- Volunteers in country 18 or less months were asked about the effectiveness of their pre-service training (PST).
- Volunteers in country 19 or more months were asked about their post-service plans, as well as the Peace Corps' resources for their post-service transition.

Tables and graphs are labeled by survey section and the survey question. The tables show the percent of post respondents that selected each choice and the total number of post respondents that answered the question. The number of responses for each question will vary, depending on:

- whether the question was asked of all Volunteers or only the Volunteers in-country a certain number of months and
- how many of the Volunteers who were "eligible" to answer the question did respond.

Most survey questions asked respondents to select only one from a set of choices. The percentages for the "select one" responses add up to 100 percent. Other questions asked Volunteers to "mark all that apply" in situations, for example, where it is likely that respondents are involved in more than one secondary activity. The percentages of the "mark all that apply" responses will total more than 100 percent; each percentage equals the number of respondents selecting that choice divided by the number of respondents who answered the question.

Posts are encouraged to compare these 2009 results with the 2006 and 2008 survey results to note trends and changes over time. Because questions are revised from one survey to the next, a crosswalk between the 2008 and 2009 questions is posted on the OSIRP intranet page under 2009 AVS Reports "Reference Documents." The earlier 2008 survey global, regional and post reports are also posted on the OSIRP Intranet page.

Volunteers' extensive narrative responses to the 29 open-ended questions on the survey are in the post's 2009 Annual Volunteer Survey Open Ended Responses report. All Volunteers' narrative responses to key questions will be analyzed for global themes and presented in a later report.

The number of surveys for each post includes surveys submitted online by Volunteers and completed paper surveys sent to the Peace Corps headquarters for hand-entry into the online survey system. The final count may include mostly completed partial surveys added to the final dataset after the survey closed.

Overview of the Post's 2009 Volunteer Survey Respondents

This overview presents basic information about the characteristics of Volunteers who completed the 2009 Annual Volunteer Survey at post.

Completed Surveys by Months in Country

	8 months or less		9 to 18 months		19 months or more		Total	
	Number	Percent	Number	Percent	Number	Percent	Number	Percent
Months3grp	882	18%	2119	44%	1850	38%	4851	100%

L1: What is your age?

	20-29	30-49	50+	Total
AGE3grp	84%	9%	7%	4652

L2: What is your gender?

	Female	Male	Total
GENDER	61%	39%	4649

C2: Which best describes the focus of your primary assignment/work?

		Percent	Number
C2	English teaching	20%	951
	Youth development	11%	506
	Health extension	9%	447
	Community development	8%	394
	Business education/advising	7%	353
	Environmental education	6%	299
	HIV/AIDS	6%	270
	Teacher training	5%	231
	Other: Please specify	5%	220
	Agriculture/fish/livestock	4%	204
	NGO development	4%	196
	Math/science teaching	4%	179
	Agroforestry	3%	141
	Information & communications technology (ICT)	3%	128
	Other education	2%	98
	Water sanitation	2%	97
	Urban & regional planning/municipal development	1%	42
	Forestry/parks	1%	39
	Total	100%	4795

A. Applying to the Peace Corps

This section reports Volunteers' motivations in applying and accepting a Peace Corps assignment.

A1: How important were the following factors in accepting a PC assignment?

	Not Important	Somewhat important	Important	NA	Total
Different culture	5%	17%	77%	0%	873
Work experience	9%	30%	60%	0%	875
Help others	1%	9%	90%		876
International experience	4%	13%	82%	0%	874
Language	13%	31%	55%	1%	874
Personal growth	2%	19%	78%	0%	871
U. S. job market	53%	28%	17%	2%	875
Serve my country	28%	39%	31%	1%	873
Travel/adventure	2%	22%	76%	0%	873
Other: Please specify below	3%	2%	13%	82%	366

A2. What prompted you to apply to the PC? Mark all that apply.

	PCV Responses	% Involved in Initiative	Total PCVs Responding
What prompted you to apply to PC	Personal interest in the Peace Corps	630	73%
	Returned Peace Corps Volunteer (e.g., someone you met or know personally)	354	41%
	Peace Corps website	354	41%
	Peace Corps campus or community information session	266	31%
	Peace Corps recruiter	161	19%
	Other: Please specify	152	18%
	Article or book about the Peace Corps	129	15%
	Returned Peace Corps Volunteer who spoke to your school or group about the Peace Corps	101	12%
	Radio, TV, or print advertisement	45	5%
	Peace Corps material in the mail	33	4%
	Total		861

Percents may total to more than 100% since Volunteers were asked to "Mark all that apply."

B. Preparation for the Peace Corps

This section reports on Volunteers' assessment of the materials and information available before their service.

B1: How useful was the information on the PC website in preparing you for the realities of living and working as a Volunteer?

	Not at all 1	2	3	4	Extremely 5	Don't know (did not access information)	Total
B1	3%	21%	41%	28%	5%	2%	871

B2: How useful were the PC materials about your country in helping you prepare for your service?

	Not at all 1	2	3	4	Extremely 5	Don't know (did not access information)	Total
B2	3%	14%	35%	39%	8%	1%	876

B3: How useful were the materials you received from the PC about your primary assignment in helping you prepare for your service?

	Not at all 1	2	3	4	Extremely 5	Don't know (did not access information)	Total
B3	8%	25%	35%	27%	5%	0%	873

B4: How useful were the materials you received from the PC regarding the need for flexibility in adapting to your work?

	Not at all 1	2	3	4	Extremely 5	Don't know (did not access information)	Total
B4	1%	11%	32%	40%	13%	4%	869

B7: How prepared do you feel to meet the challenges of PC service?

	Not at all 1	2	3	4	Exceptionally 5	Total
B7	1%	3%	24%	57%	16%	872

C. Your Peace Corps Assignment

This section reports Volunteers' primary assignment work and secondary activities. The term "primary assignment" refers to the Volunteers' assignment which is part of an overall project plan designed by your host country partners and in-country Peace Corps staff.

C3: Which of the following activities does your primary assignment/work include? Mark all that apply.

	PCV Responses	% Involved in Initiative	Total PCVs Responding
\$C3PrmAct Working with youth	2536	53%	
English teaching	1854	39%	
HIV/AIDS	1363	28%	
Working with NGO(s)	1169	24%	
Girls' education	1159	24%	
Nutrition education	1100	23%	
Income generation	1074	22%	
Environment work	1063	22%	
Rural development	823	17%	
Literacy	816	17%	
Business advertising	719	15%	
Information and communications technology (ICT)	716	15%	
Sports/fitness	652	14%	
Natural resources management	641	13%	
World Wise Schools/ Correspondence Match	619	13%	
Working with special groups (e.g., disabled, elderly, ethnic minorities, orphans)	595	12%	
Water and sanitation	570	12%	
WID/GAD	564	12%	
Arts	560	12%	
Microenterprise development	556	12%	

Library development	520	11%	
Biodiversity conservation	428	9%	
Community food security (production/marketing)	406	8%	
Mobilize host country nationals (HCNs) to volunteer	403	8%	
Other: Please specify	392	8%	
Household food security	372	8%	
Child survival	335	7%	
Urban development/municipal development	239	5%	
Total			4809

Percents may total to more than 100% since Volunteers were asked to "Mark all that apply."

C4: Hours Spent on Primary Assignment During Average Work Week

	None	1-10 hrs	11-20 hrs	21-30 hrs	31-40 hrs	More than 40 hrs	Total
C4Hrs6grp	1%	16%	32%	29%	16%	7%	4729

C4: How many hours do you spend on your primary assignment during an average work week?

	All Volunteers	Average	Lowest reported	Highest reported	Did not answer
C4	4851	23.9	0	90	122

C5: Which of the following do your secondary activities (other than your primary assignment work) include? Mark all that apply.

		PCV Responses	% Involved in Initiative	Total PCVs Responding
\$C5SecAct	English teaching	2141	48%	
	Working with youth	2111	47%	
	Sports/fitness	1205	27%	
	HIV/AIDS	1200	27%	

Girls' education	1086	24%
Arts	963	21%
Environment work	889	20%
Working with NGO(s)	863	19%
World Wise Schools/ Correspondence Match	760	17%
Library development	724	16%
Nutrition education	724	16%
Literacy	699	16%
WID/GAD	691	15%
Income generation	642	14%
Working with special groups (e.g., disabled, elderly, ethnic minorities, orphans)	600	13%
Information and communications technology (ICT)	572	13%
Mobilize host country nationals (HCNs) to volunteer	466	10%
Rural development	464	10%
Other: Please specify	444	10%
Business advertising	376	8%
Water and sanitation	331	7%
Microenterprise development	264	6%
Natural resources management	247	6%
Biodiversity conservation	194	4%
Community food security (production/marketing)	193	4%
Household food security	181	4%
Urban development/municipal development	154	3%
Child survival	147	3%
Total		

4481

Percents may total to more than 100% since Volunteers were asked to "Mark all that apply."

C5: No Secondary Activities

		Percent	Number
C5.NONE	No	94%	4555
	Yes, I have no secondary activities	6%	296
	Total	100%	4851

C6: Hours Spent on Secondary Activities During Average Work Week

	None	1-10 hrs	11-20 hrs	21-30 hrs	31-40 hrs	More than 40 hrs	Total
C6Hrs6grp		68%	25%	6%	2%	1%	4531

C6. How many hours do you spend on secondary activities during an average work week?

	All Volunteers	Average	Lowest reported	Highest reported	Did not answer
C6	4851	10.9	1	90	320

C7: How personally satisfying is your--?

	Not at all 1	2	3	4	Exceptionally 5	Total
Primary assignment	4%	15%	29%	37%	15%	4824
Secondary project/activities	3%	7%	25%	43%	22%	4617

D. Training for Peace Corps Assignment

This section reports Volunteers' assessments of the effectiveness of their Pre-Service Training and In-Service Training at post. In-Service Training (IST) includes: Reconnect; Technical IST; Mid-Service and Close of Service conferences; project management/leadership conferences; and other post-sponsored training sessions.

D1: (PCVs at post 18 months or less) How effective was your Pre-Service Training (PST) in preparing you to--

	Not effective	Poor	Adequate	Effective	Very Effective	NA/No training	Total
Manage cultural differences	1%	5%	29%	43%	22%	0%	2972
Deal with adjustment issues	1%	6%	33%	43%	17%	1%	2965
Work with counterparts/community partners	3%	22%	43%	24%	7%	1%	2970
Use language needed in work and social interactions	3%	10%	26%	35%	26%	1%	2967
Perform technical aspects of your work	6%	19%	35%	26%	12%	3%	2963
Work on your project goals and objectives	3%	14%	38%	32%	11%	2%	2963
Conduct a participatory community needs assessment (e.g., PACA)	4%	14%	35%	30%	15%	3%	2970
Monitor your project goals and outcomes	3%	16%	40%	30%	8%	3%	2948
Maintain your physical health	2%	6%	24%	38%	29%	2%	2971
Maintain your mental/emotional health	2%	9%	28%	38%	22%	1%	2970
Maintain your personal safety and security	1%	2%	17%	38%	41%	2%	2967

D5: How effective was your In-Service Training (IST) in preparing you to--

	Not effective	Poor	Adequate	Effective	Very Effective	NA/No training	Total
Manage cultural differences	2%	6%	34%	34%	13%	11%	4079
Deal with adjustment issues	2%	7%	34%	36%	12%	10%	4072
Build and strengthen working relationships with counterparts/community partners	3%	14%	32%	33%	13%	5%	4073
Use language needed in work and social interactions	4%	11%	29%	27%	16%	12%	4060
Perform technical aspects of your work	3%	13%	31%	34%	14%	5%	4067
Work on your project goals and objectives	2%	9%	30%	37%	17%	4%	4055
Conduct a participatory community needs assessment (e.g.,PACA)	4%	11%	32%	24%	10%	19%	4060
Monitor project goals and outcomes	2%	11%	35%	34%	12%	6%	4054
Maintain your physical health	2%	5%	27%	32%	21%	14%	4068
Maintain your mental/emotional health	3%	7%	27%	33%	18%	12%	4069
Maintain your personal safety and security	2%	3%	24%	34%	27%	11%	4058

D8: Did you have this skill before joining the Peace Corps?

	No/ No answer	Yes	Total
Skills specific to my assignment	1,739	3,028	4,767
Assessing community needs	3,344	1,406	4,750
Organizing/implementing community activities	2,180	2,561	4,741
Building capacity of local organizations	3,622	1,101	4,723
Monitoring, reporting, and evaluating my work	1,288	3,478	4,766
Designing and implementing training sessions	2,784	1,977	4,761

D8: Is the skill needed for your Peace Corps work?

	No/ No answer	Yes	Total
Skills specific to my assignment	244	4,064	4,308
Assessing community needs	395	4,324	4,719
Organizing/implementing community activities	441	4,265	4,706
Building capacity of local organizations	987	3,710	4,697
Monitoring, reporting, and evaluating my work	279	4,435	4,714
Designing and implementing training sessions	772	3,953	4,725

D8: Have you had adequate Peace Corps training to acquire the skill?

	No/ No answer	Yes	Total
Skills specific to my assignment	1,023	2,762	3,785
Assessing community needs	800	3,556	4,356
Organizing/implementing community activities	1,180	2,969	4,149
Building capacity of local organizations	1,920	2,151	4,071
Monitoring, reporting, and evaluating my work	862	3,124	3,986
Designing and implementing training sessions	1,473	2,603	4,076

E. Volunteer Assignment Goals and Impact

This section reports Volunteers' self-assessments of their impact on the individuals and organizations in the communities in which they serve. At the end of this section, Volunteers' third goal activities, participation in Coverdell World Wise School/Correspondence Match (CWWS/CM) and use of Peace Corps resources to support their work are reported in questions.

E1: To what extent does your Volunteer work assignment address the following?

	Not at all 1	2	3	4	Exceptionally 5	NA	Total
Meets the objectives of the project plan	2%	8%	29%	40%	17%	3%	4782
Builds local capacity for sustainability	5%	16%	34%	33%	10%	2%	4790
Involves local people in planning and implementing activities	4%	10%	27%	38%	19%	2%	4782
Complements other local development activities	7%	15%	30%	31%	12%	5%	4772
Transfers skills to host country individuals and organizations	3%	9%	30%	40%	17%	1%	4774
Mobilizes host country nationals (HCNs) to volunteer	16%	25%	27%	18%	7%	6%	4772
Helps promote a better understanding of Americans on the part of the peoples served (goal 2)	1%	5%	19%	39%	34%	1%	4781
Helps promote a better understanding of other peoples on the part of Americans (goal 3)	3%	6%	20%	36%	32%	2%	4789

E2: To what extent does your host community--?

	Not at all 1	2	3	4	Exceptionally 5	NA	Total
Need the assistance that you provided	3%	12%	23%	35%	26%	0%	1820
Want the assistance that you provided	3%	13%	21%	32%	29%	1%	1823

E3: How much impact does your assignment have on the capacities of your host counterparts/community partners?

	None 1	2	3	4	Exceptional 5	NA	Total
Ability to access information (e.g., library, Internet, etc.)	17%	19%	26%	22%	10%	5%	4784
Leadership skills	7%	15%	36%	32%	8%	3%	4777
Planning and management	5%	13%	33%	36%	10%	2%	4785
Problem solving/critical thinking	6%	15%	34%	33%	9%	2%	4784
Self-esteem	8%	14%	30%	32%	12%	5%	4767
Technical skills	6%	15%	31%	34%	11%	3%	4769
Use of local resources	7%	16%	34%	31%	9%	3%	4772
Use of external resources (e.g., grants, international NGOs)	12%	19%	27%	26%	11%	5%	4769
Better understanding of Americans	2%	5%	17%	38%	36%	2%	4782
Other: Please specify below	4%	1%	4%	5%	3%	83%	1596

E4: How much impact does your assignment have on the capacities of your host individuals with whom you work?

	None 1	2	3	4	Exceptional 5	NA	Total
Ability to access information (e.g., library, Internet, etc.)	15%	17%	27%	24%	11%	5%	4756
Leadership skills	5%	13%	32%	36%	12%	3%	4763
Planning and management	7%	18%	35%	29%	8%	4%	4761
Problem solving/critical thinking	4%	12%	32%	36%	13%	2%	4762
Self-esteem	3%	8%	26%	39%	20%	3%	4755
Technical skills	6%	15%	32%	33%	11%	3%	4753
Use of local resources	7%	17%	34%	28%	9%	4%	4747
Use of external resources (e.g., grants, international NGOs)	19%	22%	26%	19%	7%	8%	4745
Better understanding of Americans	1%	4%	15%	35%	43%	2%	4754
Other: Please specify below	3%	1%	5%	6%	5%	80%	1508

E5: To what extent does your assignment enhance the capacities of organizations with whom you work?

	None 1	2	3	4	Exceptional 5	NA	Total
Identifying and prioritizing organizational needs	10%	17%	31%	27%	7%	7%	4769
Leadership	11%	17%	31%	27%	6%	8%	4766
Management	12%	18%	31%	25%	7%	8%	4760
Monitoring and evaluation	12%	19%	31%	23%	6%	8%	4750
Planning and implementing organizational activities	8%	13%	30%	33%	10%	7%	4759
Teamwork/participatory decision-making	9%	14%	29%	30%	10%	7%	4751
Use of local resources	10%	17%	32%	25%	8%	8%	4754
Ability to mobilize, manage, and sustain local volunteers	16%	20%	29%	18%	6%	10%	4752
Other: Please specify below	6%	1%	6%	4%	2%	81%	1535

E6: How effective have you been in transferring knowledge and skills to help the following persons or groups build their capacities?

	Not at all 1	2	3	4	Exceptionally 5	NA	Total
Your counterpart/community partner	8%	15%	29%	32%	13%	3%	4780
Another institution/organization	10%	18%	32%	24%	6%	9%	4780
Members of your host community	3%	12%	33%	37%	12%	3%	4779
Other: Please specify below	3%	0%	5%	8%	6%	78%	1419

E7: To what extent have HC individuals gained a better understanding of Americans? Includes "Too early to tell"

	Not at all	Minimally	Moderately	Considerably	Exceptionally	Too early to tell	Total
E7	0%	3%	23%	49%	20%	4%	4785

**E7: To what extent have HC individuals gained a better understanding of Americans? Excludes
"Too early to tell"**

	Not at all	Minimally	Moderately	Considerably	Exceptionally	Total
E7	0%	3%	24%	51%	21%	4579

E9. In which of the following third goal activities have you participated during your PC service?

		PCV Responses	% Doing This	Total PCVs Responding
\$E9Goal3Acts	Electronic updates	4181	89%	
	Hosting American visitors	2998	64%	
	Personal website or blog	2335	50%	
	Hard copy/paper update	2079	44%	
	Enrollment in the CWWS/CMS program	1717	37%	
	Pen pal program/letter exchange	909	19%	
	While on home leave, spoke at a school or community group	733	16%	
	Podcasted/created a slide show or video posted online	339	7%	
	Other please specify	267	6%	
	Peace Corps Week activities	151	3%	
	Total			

E9: When asked about third goal activities, Volunteer answered "No involvement in third goal activities."

	Have done third goal activities	No third goal activities	Total
Peace Corps' third goal is to "help promote a better understanding of other peoples on the part of Americans." In which of the following third goal activities, including your contact with family and friends, have you participated during your Peace Corps	98%	2%	4851

E10: Would you recommend participation in the CWWS CMS to other Volunteers?

	I have not participated in CWWS/CM.	I have participated in CWWS/CM & would recommend it	I have participated in CWWS/CM and would NOT recommend it	Total
E10	63%	32%	6%	4628

E11: To what extent have Americans gained a better understanding of HCNs? (Including "Too early to tell")

	Not at all	Minimally	Moderately	Considerably	Exceptionally	Too early to tell	Total
E11	0%	4%	25%	46%	21%	3%	4772

E11: To what extent have Americans gained a better understanding of HCNs? (Excluding "Too early to tell")

	Not at all	Minimally	Moderately	Considerably	Exceptionally	Total
E11	0%	4%	26%	48%	22%	4608

E12: Which of the following resources have been useful to you in your third goal activities?

	Yes
Coverdell World Wise Schools staff (Useful)	900
Contact with other Peace Corps staff in Washington, D.C. (Useful)	578
Information at staging (Useful)	1,947
Information from your post sent to you before departure (Useful)	2,263
Internet (Useful)	3,840
Invitation kits (Useful)	2,365
Material in staging packet (Useful)	2,121
Peace Corps staff at post (e.g., World Wise School contact) (Useful)	1,378
Recruiting (Useful)	1,192
Resources available from Coverdell World Wise Schools (Useful)	646
Resources available on Peace Corps website (e.g., third goal section) (Useful)	1,485
Training on third goal (Useful)	1,131
Other: Please specify below (Useful)	115

E12: Which of the following resources would/will be helpful to you in your third goal activities?

	Yes
Coverdell World Wise Schools staff (Would be helpful)	1,515
Contact with other Peace Corps staff in Washington, D.C. (Would be helpful)	1,347
Information at staging (Would be helpful)	673
Information from your post sent to you before departure (Would be helpful)	885
Internet (Would be helpful)	653
Invitation kits (Would be helpful)	468
Material in staging packet (Would be helpful)	455
Peace Corps staff at post (e.g., World Wise School contact) (Would be helpful)	816
Recruiting (Would be helpful)	683
Resources available from Coverdell World Wise Schools (Would be helpful)	996
Resources available on Peace Corps website (e.g., third goal section) (Would be helpful)	972
Training on third goal (Would be helpful)	1,286
Other: Please specify below (Would/will be helpful)	98

E13: Do you know about the Peace Corps Partnership Program (PCPP)?

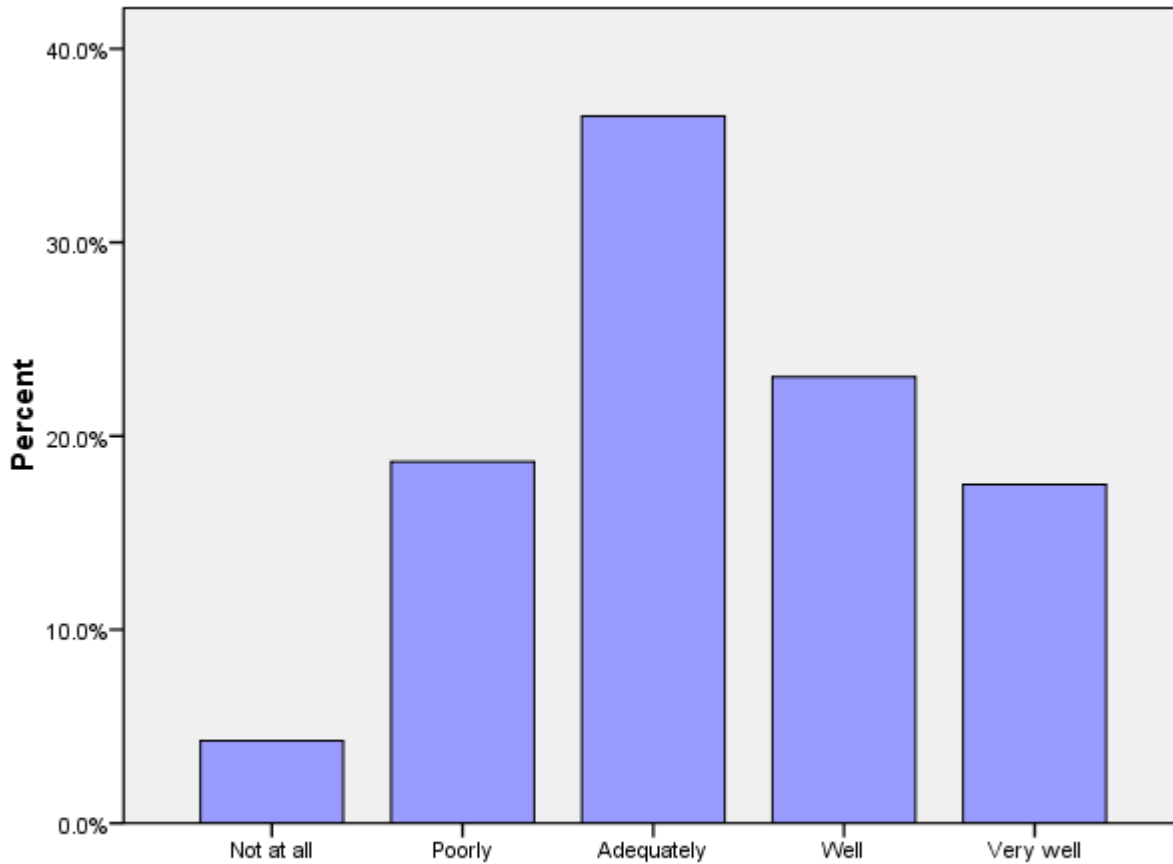
	No	Yes, but I haven't used it.	Yes, I have used it.	Total
E13	29%	57%	15%	4809

F. Peace Corps Support

This section reports Volunteers' assessments of in-country Peace Corps.

F1 (PCVs at post 9+ months): How prepared for your arrival were the host people with whom you work?

	Not at all	Poorly	Adequately	Well	Very well	Total
F1	4%	19%	37%	23%	17%	846



F1: When you arrived at your community, how prepared for your arrival were the host people with whom you work?

F2: How satisfied are you with the health care you received from your PCMO(s)?

	Not at all	Minimally	Adequately	Considerably	Exceptionally	Not Used	Total
F2	1%	6%	21%	31%	40%	2%	4758

F3: How satisfied are you with the following support provided by in-country PC staff?

	Not at all 1	2	3	4	Completely 5	NA	Total
Administrative/logistical	3%	11%	25%	36%	25%	0%	4785
Cross-cultural	2%	9%	27%	38%	23%	2%	4789
Emotional	5%	13%	28%	30%	19%	6%	4790
Feedback on my work reports	11%	18%	25%	22%	14%	9%	4787
Job assignment	6%	16%	26%	30%	21%	1%	4788
Language learning	3%	11%	23%	34%	27%	1%	4787
Medical (F3g in survey B3h in data file)	2%	7%	18%	33%	39%	1%	4787
Safety and security	2%	5%	16%	34%	44%	0%	4787
Site selection/preparation	10%	17%	24%	27%	22%	0%	4784
Technical skills	5%	17%	34%	30%	12%	2%	4751

F4: How satisfied are you with the PC time and resources allocated to mental health/adjustment issues?

	Not at all satisfied 1	2	3	4	Completely satisfied 5	Total
F4	5%	15%	31%	30%	19%	4778

F5: What level of PC support have you received to help cope with stress from issues such as HIV/AIDS, food insecurity, etc. in your community? (Including PCVs w/no need for support)

	No support	Minimal support	Adequate support	Considerable support	Exceptional support	NA / I have no need for support	Total
F5	2%	12%	22%	12%	6%	45%	4780

F5: What level of PC support have you received to help cope with stress from issues such as HIV/AIDS, food insecurity, etc. in your community? (Excluding PCVs w/no need for support)

	No support	Minimal support	Adequate support	Considerable support	Exceptional support	Total
F5	4%	22%	39%	22%	12%	2648

F6: How would you rate your interaction with the Country Director in terms of the following?

	Not adequate	Adequate	Total
Responsiveness to my issues	10%	90%	4688
Informative content	11%	89%	4658
My comfort level discussing issues	20%	80%	4672
Adequacy of visits	24%	76%	4548

F6: How would you rate your interaction with the PTO/SRPTC in terms of the following?

	Not adequate	Adequate	Total
Responsiveness to my issues	10%	90%	4461
Informative content	11%	89%	4424
My comfort level discussing issues	16%	84%	4425
Adequacy of visits	20%	80%	4302

F6: How would you rate your interaction with the APCD/Program Manager in terms of the following?

	Not adequate	Adequate	Total
Responsiveness to my issues	17%	83%	4639
Informative content	16%	84%	4599
My comfort level discussing issues	17%	83%	4594
Adequacy of visits	18%	82%	4539

F6: How would you rate your interaction with the PCMO in terms of the following?

	Not adequate	Adequate	Total
Responsiveness to my issues	9%	91%	4649
Informative content	9%	91%	4599
My comfort level discussing issues	10%	90%	4598
Adequacy of visits	13%	87%	4465

F6: How would you rate your interaction with the Safety and Security Coordinator in terms of the following?

	Not adequate	Adequate	Total
Responsiveness to my issues	7%	93%	4680
Informative content	7%	93%	4641
My comfort level discussing issues	8%	92%	4632
Adequacy of visits	13%	87%	4509

F6: How would you rate your interaction with the Training Manager in terms of the following?

	Not adequate	Adequate	Total
Responsiveness to my issues	9%	91%	4539
Informative content	10%	90%	4493
My comfort level discussing issues	12%	88%	4483
Adequacy of visits	14%	86%	4316

F6: How would you rate your interaction with administrative staff in terms of the following?

	Not adequate	Adequate	Total
Responsiveness to my issues	10%	90%	4625
Informative content	9%	91%	4574
My comfort level discussing issues	11%	89%	4569
Adequacy of visits	13%	87%	4381

F6: How would you rate your interaction with other post staff (please specify) in terms of the following?

	Not adequate	Adequate	Total
Responsiveness to my issues	27%	73%	557
Informative content	18%	82%	539
My comfort level discussing issues	22%	78%	509
Adequacy of visits	23%	77%	531

F7: To what extent is your CD aware of Volunteer issues and concerns through interactions with Volunteers?

	Not at all	Minimally	Adequately	Considerably	Completely	Total
F7	3%	15%	29%	39%	14%	4716

F8: What is the most effective way you use to communicate with PC staff?

Most effective	Cellphone (voice)	43%	2033
	Email/ Internet	22%	1052
	Text messaging	19%	908
	In-person visits	11%	531
	Telephone at residence or work	3%	140
	Other. Please specify	1%	31
	Telephone not at residence or work	1%	25
	CB radio	0%	13
	Letters	0%	10
	Total	100%	4743

F8: What is the second most effective way you use to communicate with PC staff?

Second most effective	Email/ Internet	35%	1641
	Cellphone (voice)	31%	1481
	Text messaging	20%	928
	In-person visits	7%	348
	Telephone at residence or work	5%	221
	Telephone not at residence or work	1%	53
	Letters	1%	47
	CB radio	0%	12
	Other. Please specify	0%	6
	Total	100%	4737

F8: What is the third most effective way you use to communicate with PC staff?

(C11_THREE) Third most effective	Email/ Internet	30%	1412
	In-person visits	28%	1291
	Text messaging	20%	921
	Cellphone (voice)	12%	581
	Telephone at residence or work	6%	275
	Letters	2%	113
	Telephone not at residence or work	1%	44
	Other. Please specify	1%	31
	CB radio	0%	19
	Total	100%	4687

F9: How do you rate the effectiveness of your communication resources for contacting in-country PC staff?

	Very poor	Poor	Adequate	Good	Excellent	Total
F9	1%	4%	23%	36%	37%	4807

G. Your Safety and Security

This section reports on how safe and informed about their safety Volunteers feel. Their experiences with reported and unreported crimes are summarized.

G1: How safe do you feel...?

	Not at All Safe	Often Safe	Adequately Safe	Usually Safe	Very Safe	Total
Where you live	1%	4%	9%	28%	58%	4778
Where you work	0%	2%	7%	22%	69%	4773
When you travel in-country	1%	9%	28%	42%	20%	4768
City where main Peace Corps office is located	3%	12%	29%	34%	22%	4754

G2: Please indicate the number of times you experienced the following types of discrimination/harassment.

	Never	Once	2-5 times	6-10 times	11-25 times	26+ times	Total
Age	86.8%	2.2%	6.0%	1.9%	1.1%	1.9%	3708
Anti-American	64.8%	10.3%	17.2%	3.1%	2.3%	2.2%	3833
Disability	99.4%	.1%	.4%	.1%	.1%		3656
Gender	69.6%	3.0%	9.5%	4.5%	4.1%	9.2%	3703
Racial/color	71.9%	2.8%	5.8%	4.1%	3.6%	11.7%	3720
Religious	85.4%	3.2%	5.9%	2.0%	1.3%	2.3%	3686
Sexual (verbal)	59.2%	5.4%	10.8%	5.2%	4.9%	14.4%	3742
Sexual (physical)	82.8%	8.7%	6.7%	.8%	.5%	.6%	3726
Sexual orientation	96.8%	1.0%	1.4%	.4%	.2%	.3%	3609

G2: Please indicate the number of times you reported discrimination/harassment events to PC.

	Never	Once	2-5 times	6-10 times	11-25 times	26+ times	Total
Age	93.2%	4.7%	2.1%				471
Anti-American	92.3%	5.7%	1.8%		.1%	.1%	1219
Disability	97.1%		2.9%				35
Gender	93.8%	3.7%	1.8%	.3%	.2%	.2%	1044
Racial/color	93.7%	2.7%	2.4%	.4%	.3%	.5%	965
Religious	95.1%	3.9%	.8%	.2%			490
Sexual (verbal)	86.1%	8.3%	4.6%	.3%	.1%	.6%	1429
Sexual (physical)	64.1%	27.5%	8.3%			.2%	615
Sexual orientation	92.9%	5.5%	.8%	.8%			127

G3: Please indicate the number of times you experienced the following types of crimes.

	Never	Once	2-5 times	6-10 times	11-25 times	26+ times	Total
Burglary	86.6%	9.1%	4.1%	.2%	.1%		3838
Theft	65.0%	23.7%	10.8%	.4%	.1%	.0%	3981
Robbery	93.2%	6.1%	.7%	.0%	.0%		3748
Physical assault	90.7%	7.1%	2.0%	.1%	.1%		3740
Aggravated assault	98.6%	1.2%	.2%				3691
Sexual assault	93.3%	4.9%	1.7%	.1%	.0%	.0%	3719
Rape	99.6%	.4%					3626

G3: Please indicate the number of times you reported the following crimes to Peace Corps.

	Never	Once	2-5 times	6-10 times	11-25 times	26+ times	Total
Burglary	31.4%	55.7%	12.7%	.2%			497
Theft	38.5%	49.3%	12.3%				1313
Robbery	23.8%	70.0%	6.2%				260
Physical assault	47.6%	45.2%	6.9%	.3%			334
Aggravated assault	40.3%	55.2%	4.5%				67
Sexual assault	54.3%	39.5%	6.2%				243
Rape	66.7%	33.3%					30

G4: If you did not report your experience with burglary, please your reason(s) for not reporting.

		PCV Responses	% Reason Not Rptd	Total PCVs Responding
\$NoRpBurg	I felt it was too minor or common to report	165	63%	
	I did not think the PC could help	92	35%	
	It might hurt my relationship with the community	44	17%	
	Other	44	17%	
	I believed it could result in changing sites	20	8%	
	Reporting might result in disciplinary action against me	8	3%	
	Concerns of a possible breach in confidentiality	2	1%	
	Total			

*Percents may total to more than 100% since Volunteers were asked to "mark all that apply."

G4: If you did not report your experience with theft, please your reason(s) for not reporting.

		PCV Responses	% Reason Not Rptd	Total PCVs Responding
\$NoRpTheft	I felt it was too minor or common to report	521	72%	728
	I did not think the PC could help	301	41%	
	Other	111	15%	
	It might hurt my relationship with the community	56	8%	
	Reporting might result in disciplinary action against me	21	3%	
	I believed it could result in changing sites	14	2%	
	Concerns of a possible breach in confidentiality	5	1%	
	Total			

*Percents may total to more than 100% since Volunteers were asked to "mark all that apply."

G4: If you did not report your experience with robbery, please your reason(s) for not reporting.

		PCV Responses	% Reason Not Rptd	Total PCVs Responding
\$NoRpRobb	Other	33	34%	
	I did not think the PC could help	32	33%	
	I felt it was too minor or common to report	30	31%	
	Reporting might result in disciplinary action against me	15	15%	
	I believed it could result in changing sites	4	4%	
	It might hurt my relationship with the community	3	3%	
	Concerns of a possible breach in confidentiality	2	2%	
	Total			

*Percents may total to more than 100% since Volunteers were asked to "mark all that apply."

G4: If you did not report your experience with physical assault, please your reason(s) for not reporting.

	PCV Responses	% Reason Not Rptd	Total PCVs Responding
\$NoRpPhAs	I felt it was too minor or common to report	122	58%
	I did not think the PC could help	77	36%
	Other	45	21%
	Reporting might result in disciplinary action against me	22	10%
	It might hurt my relationship with the community	17	8%
	I believed it could result in changing sites	16	8%
	Concerns of a possible breach in confidentiality	8	4%
	Total		

*Percents may total to more than 100% since Volunteers were asked to "mark all that apply."

G4: If you did not report your experience with aggravated assault, please your reason(s) for not reporting.

	PCV Responses	% Reason Not Rptd	Total PCVs Responding
\$NoRpAgAs Other	23	48%	
I did not think the PC could help	12	25%	
I felt it was too minor or common to report	8	17%	
Reporting might result in disciplinary action against me	5	10%	
I believed it could result in changing sites	3	6%	
It might hurt my relationship with the community	3	6%	
Concerns of a possible breach in confidentiality	2	4%	
Total			

*Percents may total to more than 100% since Volunteers were asked to "mark all that apply."

G4: If you did not report your experience with sexual assault, please your reason(s) for not reporting.

		PCV Responses	% Reason Not Rptd	Total PCVs Responding
\$NoRpSxAs	I felt it was too minor or common to report	91	46%	
	I did not think the PC could help	81	41%	
	Other	48	24%	
	It might hurt my relationship with the community	29	15%	
	I believed it could result in changing sites	19	10%	
	Concerns of a possible breach in confidentiality	12	6%	
	Reporting might result in disciplinary action against me	12	6%	
	Total			

*Percents may total to more than 100% since Volunteers were asked to "mark all that apply."

G4: If you did not report your experience with rape, please your reason(s) for not reporting.

	PCV Responses	% Reason Not Rptd	Total PCVs Responding
\$NoRpRape Other	22	67%	33
I did not think the PC could help	6	18%	
It might hurt my relationship with the community	4	12%	
I believed it could result in changing sites	3	9%	
Concerns of a possible breach in confidentiality	3	9%	
I felt it was too minor or common to report	1	3%	
Reporting might result in disciplinary action against me	1	3%	
Total			

*Percents may total to more than 100% since Volunteers were asked to "mark all that apply."

H. Volunteers Working in HIV/AIDS

This section reports Volunteers' involvement in HIV/AIDS and their perceived effectiveness of their HIV/AIDS related activities.

H1: Which of the following best describes your involvement in HIV/AIDS activities?

	HIV/AIDS work is my primary assignment.	HIV/AIDS work is part of my secondary activities.	Involved in HIV/AIDS efforts, not primary/secondary work	Not involved in any HIV/AIDS related activities	Total
H1	16%	22%	23%	39%	4760

H2: How well has PC training prepared you to undertake your HIV/AIDS activities?

	Not at all	Poorly	Adequately	Well	Very well	NA	Total
H2	3%	15%	34%	26%	18%	3%	2910

H3: In working with HC individuals or groups, how would you rate the effectiveness of your specific HIV/AIDS activities? (Including the "Don't Know" responses)

	Seldom effective	Sometimes effective	Often effective	Almost always effective	Don't know	Total
H3	4%	30%	38%	12%	16%	2899

H3: In working with HC individuals or groups, how would you rate the effectiveness of your specific HIV/AIDS activities? (Excluding the "Don't Know" responses)

	Seldom effective	Sometimes effective	Often effective	Almost always effective	Total
H3	5%	36%	45%	14%	2423

I. Your Life in the Peace Corps

This section reports on Volunteers' descriptions of and adjustments to their living conditions, including stress factors and how Volunteers cope with stress.

I1: Have you lived with a host country individual or family?

	Never lived with a host country individual or family	Yes, I lived with a host country individual or family only	Yes, in my community (not during PST).	Yes, both during PST and later in my community.	Total
I1	1%	34%	2%	62%	4731

I2: How often do you interact with HCNs in community/family social events?

	Daily	Several times a week	Weekly	Several times a month	Monthly	Less than once a month	Total
I2	43%	21%	14%	11%	6%	5%	4725

I3: How well can you communicate in the language used by most people in your community?

	Not at all	Poorly	Adequately	Well	Very well	Total
I3	1%	16%	37%	26%	20%	4709

I4: Do you have the following at your worksite?

	Never	Sometimes or more often	Total
Electricity	15%	85%	4669
Running water	26%	74%	4648

I4: Do you have the following at your residence?

	Never	Sometimes or more often	Total
Electricity	14%	86%	4514
Running water	24%	76%	4516

I5: How well do your PC experiences match the expectations you had before you became a Volunteer?

	Not at all	Minimally	Moderately	Considerably	Exceptionally	Total
I5	4%	15%	40%	32%	8%	4711

I7: To what extent do the following create stress and/or emotional health issues for you?

	Not at all stressful 1	2	3	4	Exceptionally stressful 5	NA	Total
Cultural issues	9%	23%	35%	25%	8%	0%	4722
Dealing with violence in country (e.g., civil unrest, domestic violence, corporal punishment)	34%	29%	17%	10%	4%	6%	4729
Health/medical problems	21%	34%	26%	13%	4%	1%	4721
Issues including family, friends, loved ones in U.S.	18%	30%	27%	17%	7%	1%	4719
Isolation/loneliness	15%	28%	27%	20%	9%	1%	4731
Local language	15%	29%	31%	18%	7%	1%	4726
Primary assignment	12%	24%	30%	23%	10%	1%	4725
Romantic relationships in-country	35%	19%	15%	8%	4%	19%	4722
Interactions with other Volunteers	44%	32%	16%	6%	1%	1%	4718
Interactions with PC Staff	37%	33%	18%	8%	3%	1%	4722
Safety and security	36%	37%	18%	6%	2%	1%	4715
Other: Please specify below	7%	2%	8%	11%	18%	54%	823

I8: Please mark all of the typical ways in which you cope with stress.

		PCV Responses	% Using This Stress Reducer	Total PCVs Responding
\$I8LessStress	Talk with friends and family in US	3844	82%	
	Pursue personal hobbies	3830	82%	
	Talk with PCVs outside my community	3690	79%	
	Do sports	3310	71%	
	Leave the community for a time	3223	69%	
	Get involved in other projects	2496	53%	
	Talk with co-workers or friends (not PCVs)	2367	51%	
	Talk with PCVs in my community	2334	50%	
	Talk with my host family	1291	28%	
	Meditate	1151	25%	
	Pray	1135	24%	
	Talk with PC in-country staff	1078	23%	
	Do other activity (specify)	563	12%	
	Talk with Office of Special Services staff	37	1%	
	Total			4676

*Percents total to more than 100% since Volunteers were asked to "mark all that apply."

I8: When asked about ways of coping with stress, Volunteers who answered "No stress"

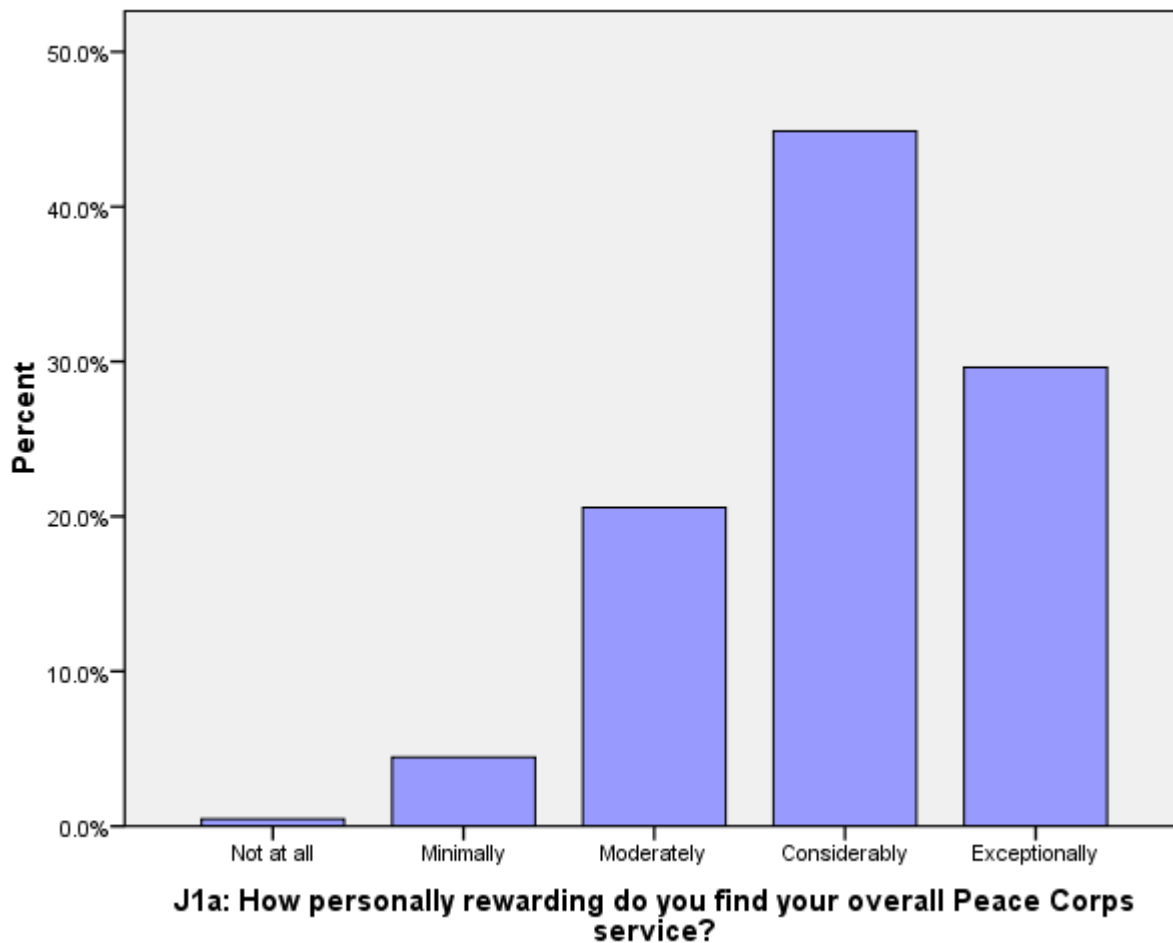
	No	Yes, I have no stress	Total
I8.NOSTRESS	99%	1%	4851

J. Overall Assessment of Peace Corps Service

This section reports Volunteers' level of satisfaction with their Peace Corps service and their expectations about completing their service.

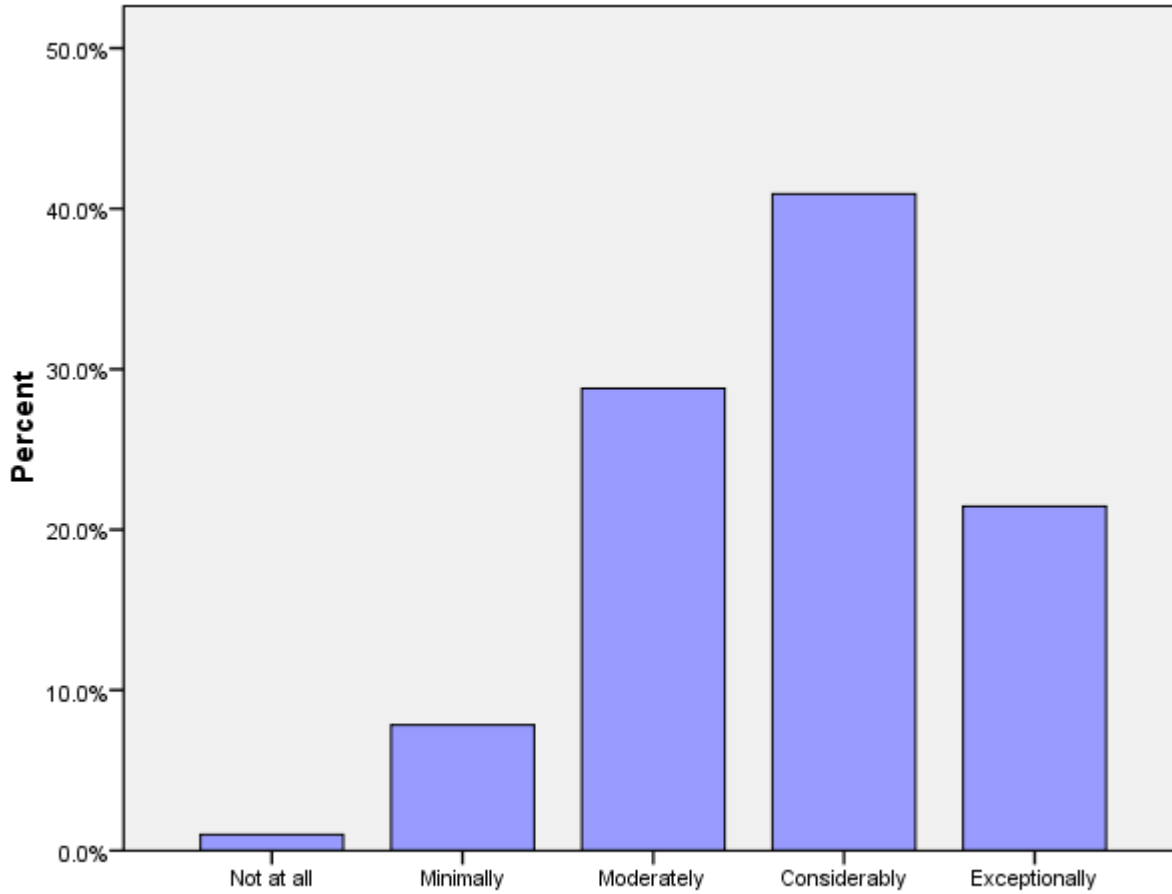
J1a: How personally rewarding do you find your overall Peace Corps service?

	Not at all	Minimally	Moderately	Considerably	Exceptionally	Total
J1A	0%	4%	21%	45%	30%	4718



J1b: How personally rewarding do you find your community involvement?

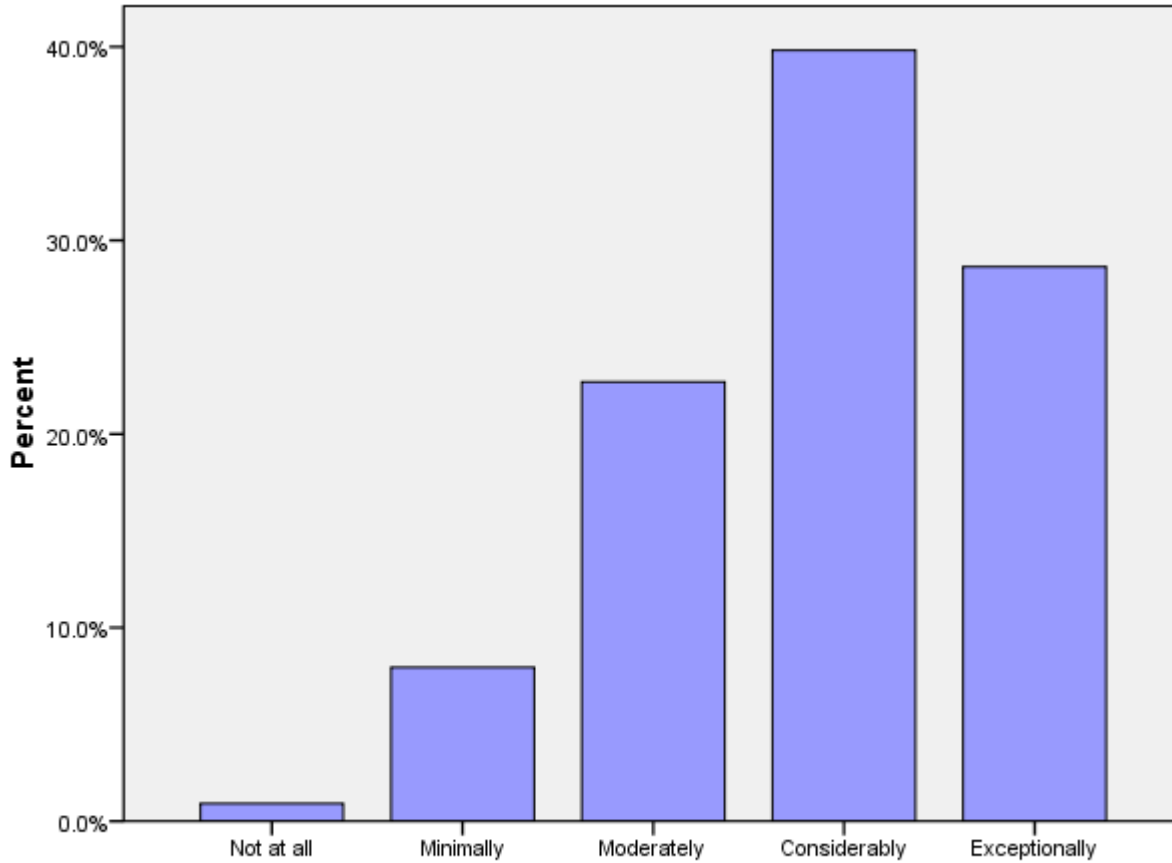
	Not at all	Minimally	Moderately	Considerably	Exceptionally	Total
J1B	1%	8%	29%	41%	21%	4712



J1b: How personally rewarding do you find your community involvement?

J1c: How personally rewarding do you find your experience with other Volunteers?

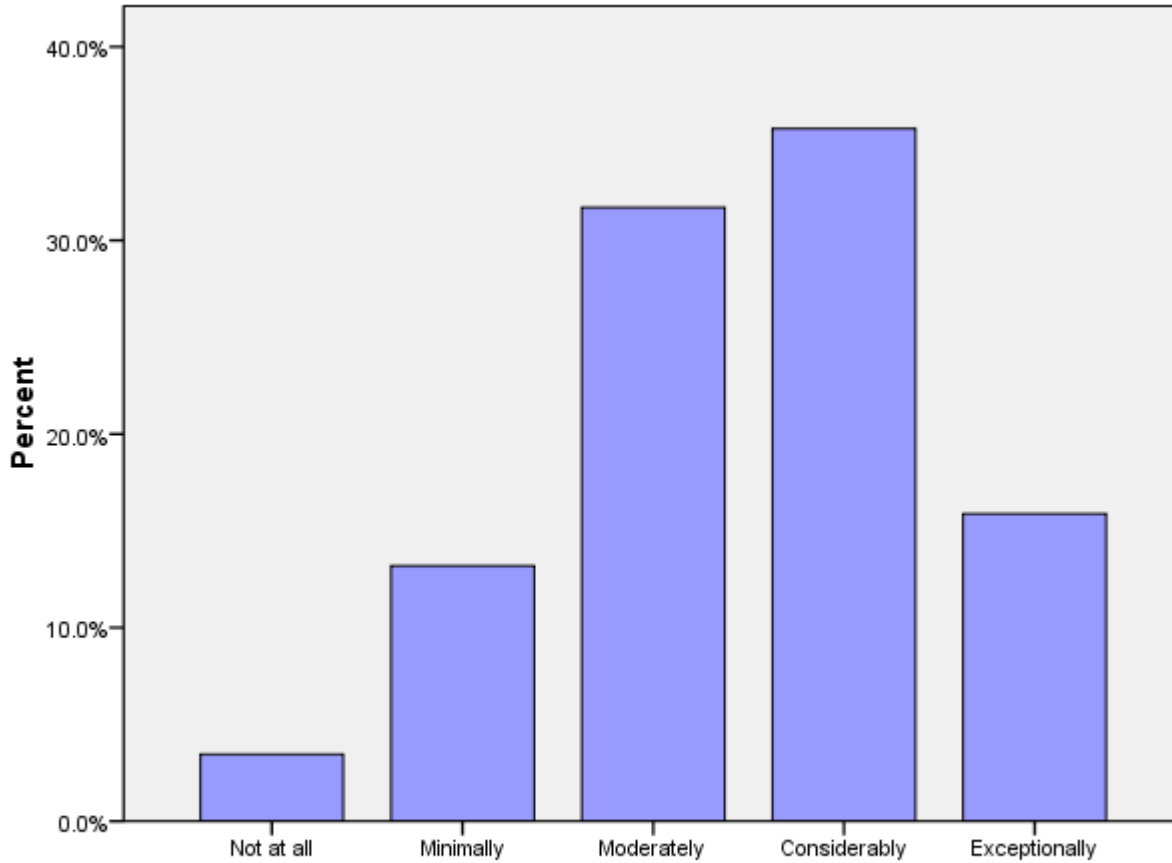
	Not at all	Minimally	Moderately	Considerably	Exceptionally	Total
J1C	1%	8%	23%	40%	29%	4711



J1c: How personally rewarding do you find your experience with other Volunteers?

J1d: How personally rewarding do you find your work with counterparts/community partners?

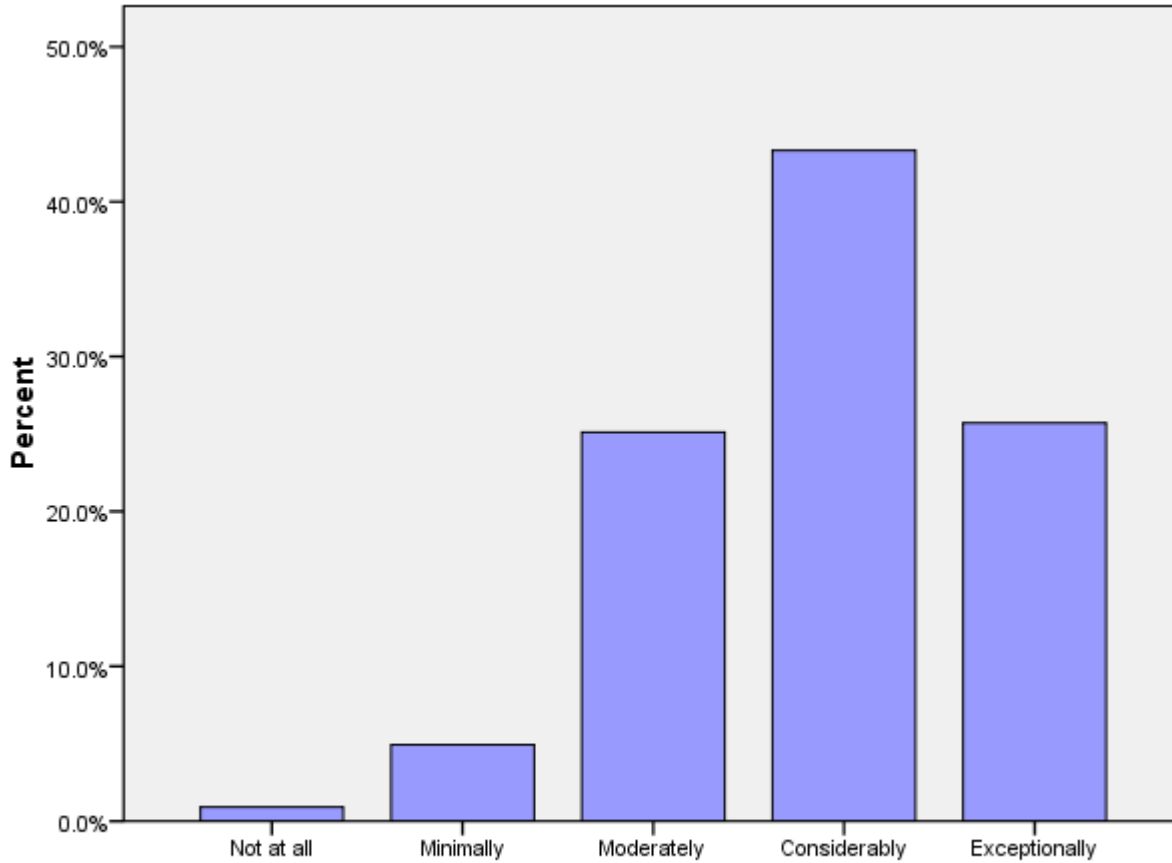
	Not at all	Minimally	Moderately	Considerably	Exceptionally	Total
J1D	3%	13%	32%	36%	16%	4716



J1d: How personally rewarding do you find your work with counterparts/community partners?

J1e: How personally rewarding do you find your experience with other HCNs?

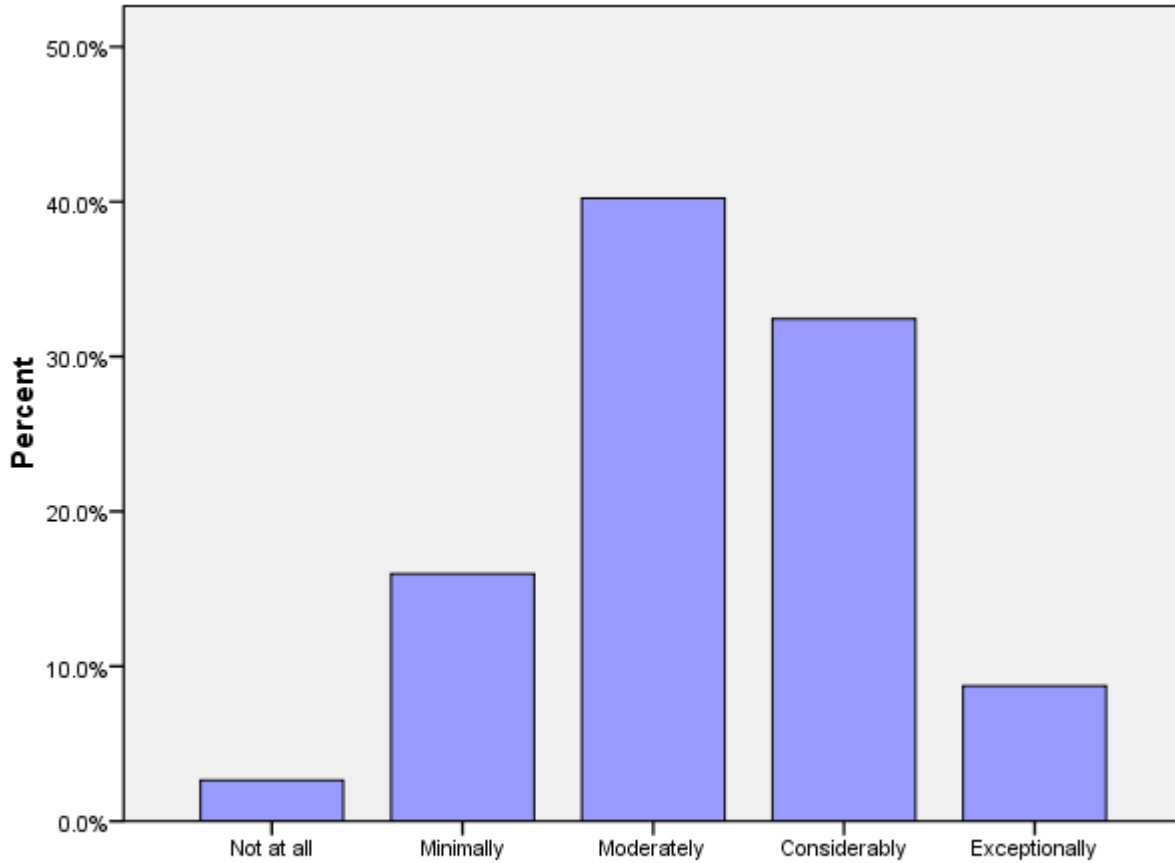
	Not at all	Minimally	Moderately	Considerably	Exceptionally	Total
J1E	1%	5%	25%	43%	26%	4717



J1e: How personally rewarding do you find your experience with other HCNs?

PCVs at post 9 months+ months: Please rate how well you think you achieved Goal 1.

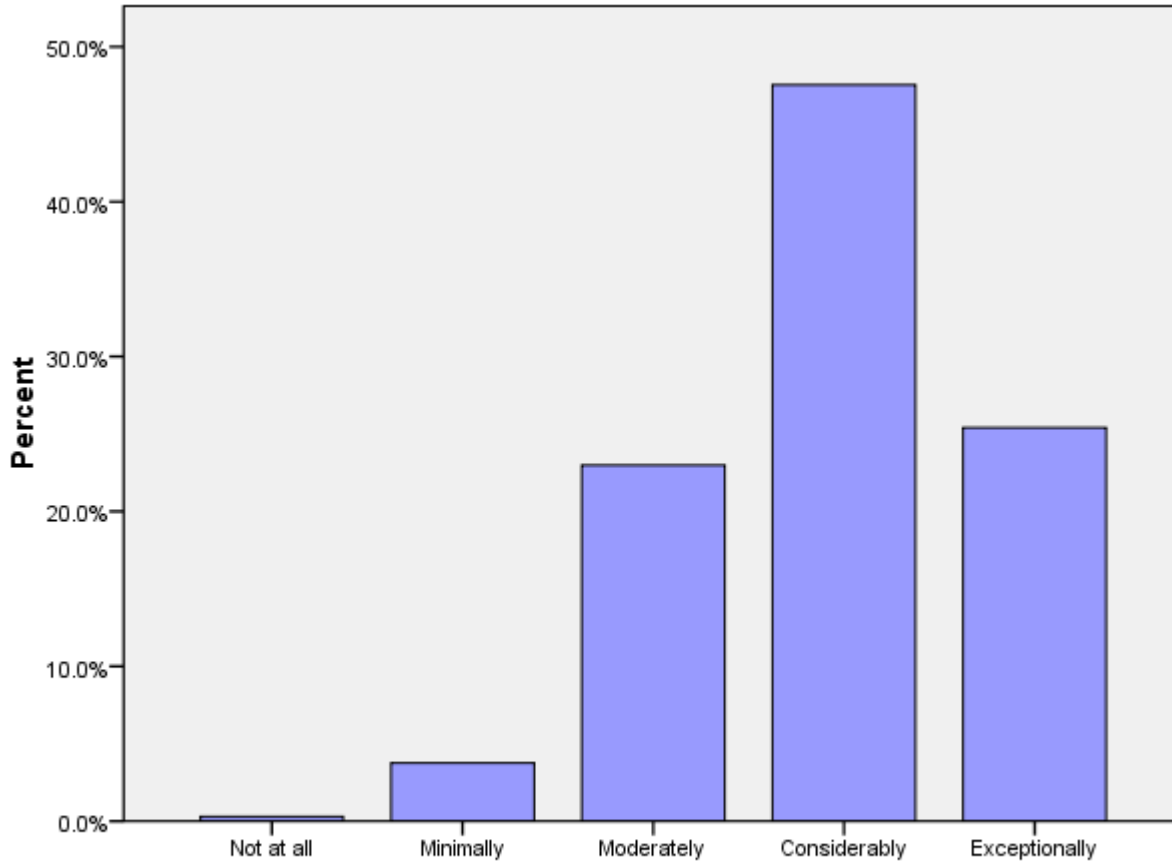
	Not at all	Minimally	Moderately	Considerably	Exceptionally	Total
J2A	3%	16%	40%	32%	9%	3869



PCVs at post 9 months+ months: Rate how well you think you achieved Goal 1.

PCVs at post 9 months+ months: Please rate how well you think you achieved Goal 2.

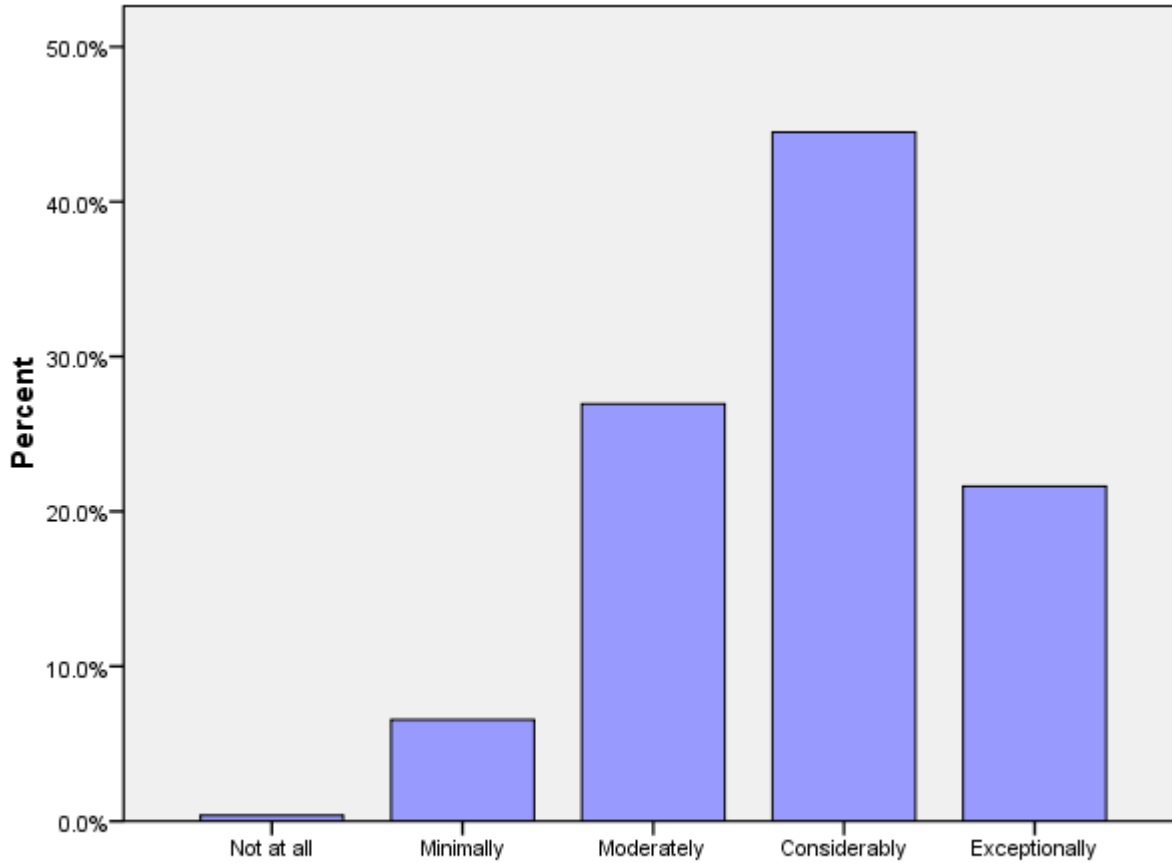
	Not at all	Minimally	Moderately	Considerably	Exceptionally	Total
J2B	0%	4%	23%	48%	25%	3881



PCVs at post 9 months+ months: Rate how well you think you achieved Goal 2.

PCVs at post 9 months+ months: Please rate how well you think you achieved Goal 3.

	Not at all	Minimally	Moderately	Considerably	Exceptionally	Total
J2C	0%	7%	27%	44%	22%	3875



PCVs at post 9 months+ months: Please rate how well you think you achieved Goal 3.

J3: Today, would you make the same decision to join the Peace Corps?

	No	Not likely	Possibly	Probably	Definitely	Total
J3	1%	2%	9%	20%	68%	4713

J4: Would you recommend Peace Corps service to others you think are qualified?

	No	Not likely	Possibly	Probably	Definitely	Total
J4	1%	2%	10%	20%	67%	4725

J5: Do you intend to complete your Peace Corps service?

	No	Not sure	Yes	Might extend	Total
J5	1%	4%	75%	20%	4723

J6: Would your host country benefit most if the Peace Corps program was---?

	Discontinued	Reduced	Refocused/redesig ned	Maintained as is	Expanded	Total
J6	3%	5%	48%	22%	22%	4689

K. Activities After Peace Corps Service

This section reports on Volunteers' plans for after they have completed their Peace Corps Service.

K1: What are your plans after your Peace Corps service? Work in government.

Government			
In the U.S.	In your host country	In another country	N
88%	7%	21%	528

* Percent of cases was used. Percentages will be greater than 100 since Volunteers were asked to select all that applied.

K1: What are your plans after your Peace Corps service? Work in the private sector.

Private Sector			
In the U.S.	In your host country	In another country	N
83%	11%	24%	629

* Percent of cases was used. Percentages will be greater than 100 since Volunteers were asked to select all that applied.

K1: What are your plans after your Peace Corps service? Work for an NGO.

NGO			
In the U.S.	In your host country	In another country	N
77%	17%	32%	545

* Percent of cases was used. Percentages will be greater than 100 since Volunteers were asked to select all that applied.

K1: What are your plans after your Peace Corps service? Work for PC

Response.

Peace Corps Response			
In the U.S.	In your host country	In another country	N
48%	17%	68%	231

* Percent of cases was used. Percentages will be greater than 100 since Volunteers were asked to select all that applied.

K1: What are your plans after your Peace Corps service? Continue to participate in volunteer activities.

Volunteer Activities			
In the U.S.	In your host country	In another country	N
89%	10%	23%	874

* Percent of cases was used. Percentages will be greater than 100 since Volunteers were asked to select all that applied.

K1: What are your plans after your Peace Corps service? Graduate school/academic credentialing.

Graduate School			
In the U.S.	In your host country	In another country	N
94%	2%	10%	884

* Percent of cases was used. Percentages will be greater than 100 since Volunteers were asked to select all that applied.

K1: What are your plans after your Peace Corps service? Travel.

Travel			
In the U.S.	In your host country	In another country	N
56%	16%	65%	1027

* Percent of cases was used. Percentages will be greater than 100 since Volunteers were asked to select all that applied.

K1: What are your plans after your Peace Corps service? Other.

Other			
In the U.S.	In your host country	In another country	N
71%	17%	34%	214

* Percent of cases was used. Percentages will be greater than 100 since Volunteers were asked to select all that applied.

K2: How prepared do you feel to share your Peace Corps experience and knowledge of your host country with others in the United States when you return?

	Not at all	Minimally	Moderately	Considerably	Total
How prepared do you feel to share your Peace Corps experience and knowledge of your host country with others in the United States when you return?	0%	4%	27%	69%	1797

K3: How well do you feel Peace Corps has prepared you for life in the U. S. after you return?

	Not at all	Minimally	Moderately	Considerably	Exceptionally	Total
How well do you feel Peace Corps has prepared you for life in the U. S. after your return?	4%	13%	38%	33%	10%	1792

K6: Have your life/career goals changed because of your Peace Corps service?

	No	Yes	Total
Have your life/career goals changed because of your Peace Corps service?	45%	55%	1708

K7: How well informed are you about the following opportunities for returned Volunteers:

	Not informed	Somewhat informed	Well informed	N
Peace Corps Response	31%	49%	20%	1794
Peace Corps' Fellows/USA program	12%	52%	37%	1789
Noncompetitive eligibility	14%	50%	36%	1796
RPCV Career Center in Washington, D.C.	41%	43%	16%	1794
Returned Volunteer Services	38%	47%	15%	1792

K8: How did you first learn about the Fellows/USA program?

Learn about Fellows/USA program	PC Website	51%	1596
	Word of mouth	28%	
	From a recruiter	20%	
	At COS Conference	16%	
	From staff in the host country's PC office	12%	
	At PST	9%	
	University website	6%	
	Mid-service mailing from PC	6%	
	At IST	6%	
	Other	5%	
	At post's information resource center	3%	
	Hotline	3%	
	N		

* Percent of cases was used. Percentages will be greater than 100 since Volunteers were asked to select all that applied.

K9: Which of the following resources do you think will be helpful as you exit Peace Corps service?

K9 Resources	Career Resource Manual	57%	1775
	Applying to federal government with RPCV noncompetitive eligibility	55%	
	Electronic newsletter with job postings and career advice	54%	
	Access to free job bulletins	53%	
	RPCV Handbook	50%	
	RPCV career conferences	46%	
	List of RPCVs willing to talk to me about their careers	44%	
	RPCV job search webinars	40%	
	Guide to speaking about my PC service to others (third goal)	33%	
	Connection with RPCVs through a mentoring program	31%	
	Self-assessment software (SIGI 3)	19%	
	NOT SURE	14%	
	Other	3%	
N			

* Percent of cases was used. Percentages will be greater than 100 since Volunteers were asked to select all that applied.

K10: Which of the following third goal (helping promote a better understanding of peoples on the part of Americans) activities do you plan to do when you return to the U. S.?

K10 Third Goal	Continue with volunteerism and service learning	80%	
	Speak to a group of adults about my experience	62%	
	Speak to school age children about my experience	61%	
	Join a RPCV group	60%	
	Write stories from my PC service on my own	43%	
	Participate in PC Week	32%	
	Obtain and use PC third goal resources	15%	
	NOT SURE	11%	
	Write stories from my PC service in conjunction with CWWS	5%	
	Other	2%	
	N		1787

* Percent of cases was used. Percentages will be greater than 100 since Volunteers were asked to select all that applied.