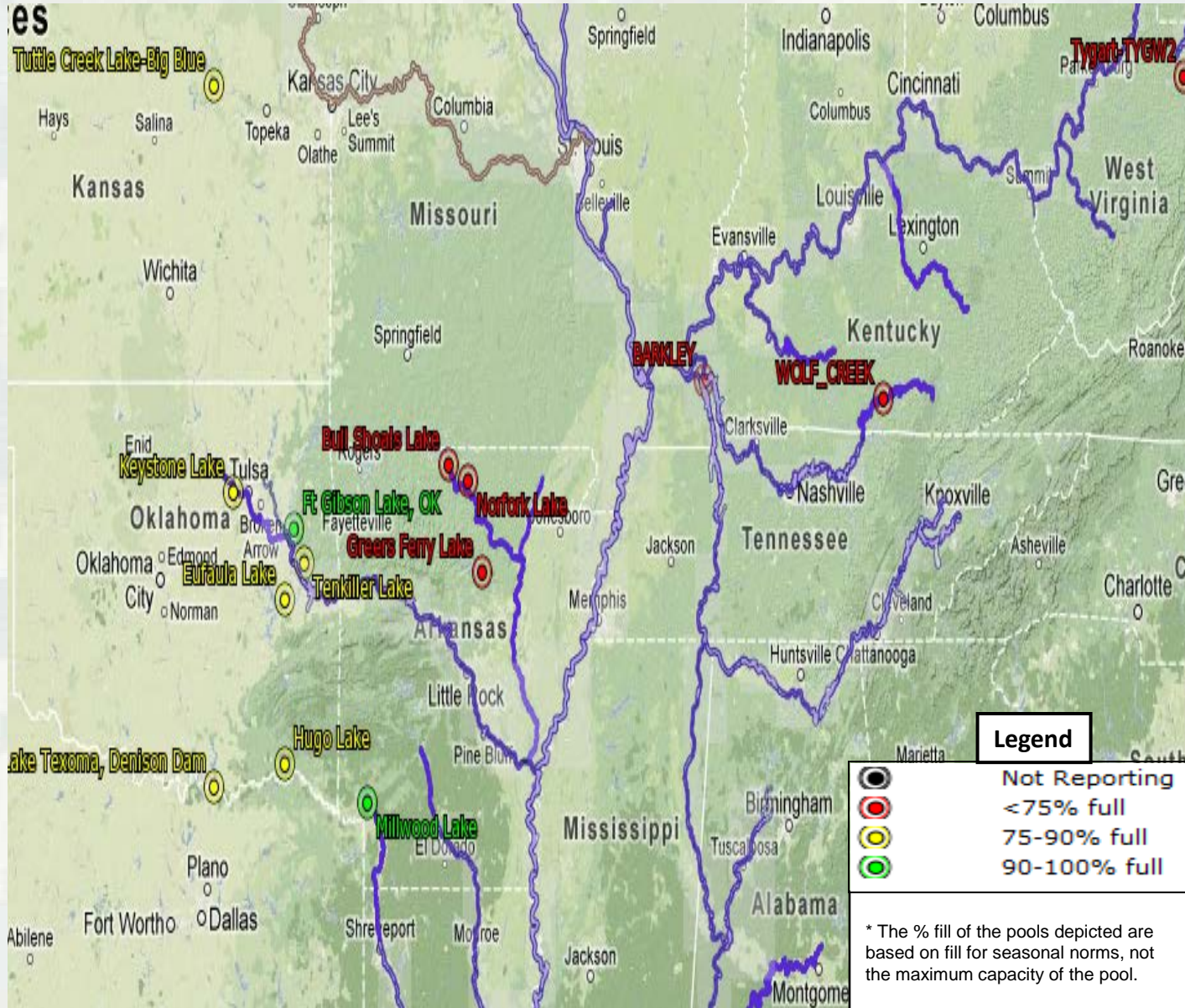


Reservoir Status



Summary: (13 FEB 13)

- 17 Critical Reservoirs have been identified for flow augmentation to the waterways.
- Each reservoir is currently operating within the limits of its approved Water Management Plan.
- Kentucky and Barkley Lakes have greatest effect on the Lower Mississippi River by augmenting channel depth in the Lower Ohio River and in the Mississippi River south of Cairo, IL.
- Reservoir Guide Curves are being monitored to augment flows.
- As reservoirs and pools maintain winter draw down of storage, the trend for percent full will maintain lower levels.

Change from 12 FEB 13:

- 6 reservoirs are <75% full
- 6 reservoirs are 75-90% full
- 2 reservoirs are 90-100% full



As of: 13 FEB 2013

BUILDING STRONG®