

Transmission of material in this release is embargoed until 8:30 a.m. (EDT) Friday, June 1, 2012

USDL-12-1070

Technical information:

Household data: (202) 691-6378 • cpsinfo@bls.gov • www.bls.gov/cps
Establishment data: (202) 691-6555 • cesinfo@bls.gov • www.bls.gov/ces

Media contact: (202) 691-5902 • PressOffice@bls.gov

THE EMPLOYMENT SITUATION — MAY 2012

Nonfarm payroll employment changed little in May (+69,000), and the **unemployment rate** was essentially unchanged at 8.2 percent, the U.S. Bureau of Labor Statistics reported today. Employment increased in health care, transportation and warehousing, and wholesale trade but declined in construction. Employment was little changed in most other major industries.

Chart 1. Unemployment rate, seasonally adjusted, May 2010 – May 2012

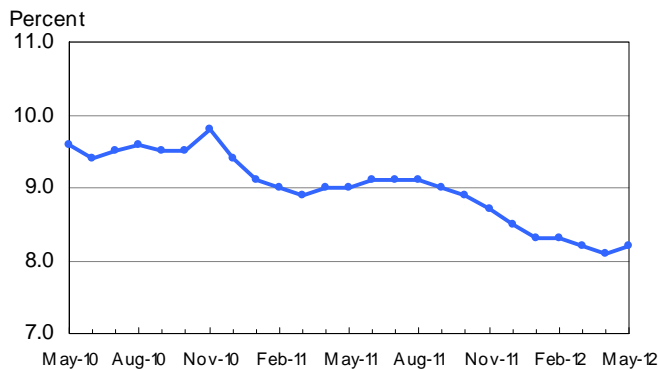
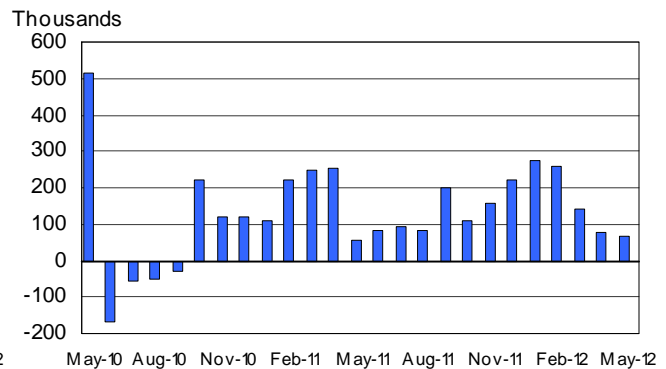


Chart 2. Nonfarm payroll employment over-the-month change, seasonally adjusted, May 2010 – May 2012



Household Survey Data

Both the **number of unemployed persons** (12.7 million) and the **unemployment rate** (8.2 percent) changed little in May. (See table A-1.)

Among the **major worker groups**, the unemployment rates for adult men (7.8 percent) and Hispanics (11.0 percent) edged up in May, while the rates for adult women (7.4 percent), teenagers (24.6 percent), whites (7.4 percent), and blacks (13.6 percent) showed little or no change. The jobless rate for Asians was 5.2 percent in May (not seasonally adjusted), down from 7.0 percent a year earlier. (See tables A-1, A-2, and A-3.)

The number of **long-term unemployed** (those jobless for 27 weeks and over) rose from 5.1 to 5.4 million in May. These individuals accounted for 42.8 percent of the unemployed. (See table A-12.)

The **civilian labor force participation rate** increased in May by 0.2 percentage point to 63.8 percent, offsetting a decline of the same amount in April. The **employment-population ratio** edged up to 58.6 percent in May. (See table A-1.)

The number of persons employed **part time for economic reasons** (sometimes referred to as involuntary part-time workers) edged up to 8.1 million over the month. These individuals were working part time because their hours had been cut back or because they were unable to find a full-time job. (See table A-8.)

In May, 2.4 million persons were **marginally attached to the labor force**, up from 2.2 million a year earlier. (The data are not seasonally adjusted.) These individuals were not in the labor force, wanted and were available for work, and had looked for a job sometime in the prior 12 months. They were not counted as unemployed because they had not searched for work in the 4 weeks preceding the survey. (See table A-16.)

Among the marginally attached, there were 830,000 **discouraged workers** in May, about the same as a year earlier. (The data are not seasonally adjusted.) Discouraged workers are persons not currently looking for work because they believe no jobs are available for them. The remaining 1.6 million persons marginally attached to the labor force in May had not searched for work in the 4 weeks preceding the survey for reasons such as school attendance or family responsibilities. (See table A-16.)

Establishment Survey Data

Total **nonfarm payroll employment** changed little in May (+69,000), following a similar change in April (+77,000). In comparison, the average monthly gain was 226,000 in the first quarter of the year. In May, employment rose in health care, transportation and warehousing, and wholesale trade, while construction lost jobs. (See table B-1.)

Health care employment continued to increase in May (+33,000). Within the industry, employment in ambulatory health care services, which includes offices of physicians and outpatient care centers, rose by 23,000 over the month. Over the year, health care employment has risen by 340,000.

Transportation and warehousing added 36,000 jobs over the month. Employment gains in transit and ground passenger transportation (+20,000) and in couriers and messengers (+5,000) followed job losses in those industries in April. Employment in both industries has shown little net change over the year. In May, truck transportation added 7,000 jobs.

Employment in **wholesale trade** rose by 16,000 over the month. Since reaching an employment low in May 2010, this industry has added 184,000 jobs.

Manufacturing employment continued to trend up in May (+12,000) following a similar change in April (+9,000). Job gains averaged 41,000 per month in the first quarter of this year. In May, employment rose in fabricated metal products (+6,000) and in primary metals (+4,000). Since its most recent low in January 2010, manufacturing employment has increased by 495,000.

Construction employment declined by 28,000 in May, with job losses occurring in specialty trade contractors (-18,000) and in heavy and civil engineering construction (-11,000). Since reaching a low in January 2011, employment in construction has shown little change on net.

Employment in **professional and business services** was essentially unchanged in May. Since the most recent low point in September 2009, employment in this industry has grown by 1.4 million. In May, job losses in accounting and bookkeeping services (-14,000) and in services to buildings and dwellings (-14,000) were offset by small gains elsewhere in the industry.

Employment in other major industries, including **mining and logging, retail trade, information, financial activities, leisure and hospitality**, and **government**, changed little in May.

The **average workweek for all employees** on private nonfarm payrolls edged down by 0.1 hour to 34.4 hours in May. The manufacturing workweek declined by 0.3 hour to 40.5 hours, and factory overtime declined by 0.1 hour to 3.2 hours. The average workweek for **production and nonsupervisory employees** on private nonfarm payrolls was unchanged at 33.7 hours. (See tables B-2 and B-7.)

In May, **average hourly earnings for all employees** on private nonfarm payrolls edged up by 2 cents to \$23.41. Over the past 12 months, average hourly earnings have increased by 1.7 percent. In May, average hourly earnings of private-sector **production and nonsupervisory employees** edged down by 1 cent to \$19.70. (See tables B-3 and B-8.)

The change in total nonfarm payroll employment for March was revised from +154,000 to +143,000, and the change for April was revised from +115,000 to +77,000.

The Employment Situation for June is scheduled to be released on Friday, July 6, 2012, at 8:30 a.m. (EDT).

Corrections to Women Employee Data from the Establishment Survey

On May 25, 2012, BLS corrected estimates of women employees in the U.S. Postal Service from the establishment survey. BLS staff had discovered data-processing errors that occurred during the November 2009–April 2012 period that resulted in an incorrect ratio of women employees to all employees in the U.S. Postal Service. The following women employee data series that incorporate the U.S. Postal Service employment were also corrected: women employees in the federal government, government, service-providing sector, and total nonfarm. These data series on women employees were affected only to the extent of the error occurring in the estimate of women employees in the U.S. Postal Service. Not seasonally adjusted data were revised from November 2009 through February 2012. Seasonally adjusted data were revised back to January 2002. Some of the corrected women employee data series appear in Summary table B and table B-5 of this news release. Total employment (jobs held by men and women combined) for all data series including the U.S. Postal Service are correct as originally published. For more information, see www.bls.gov/bls/ceswomen_usps_correction.htm.

HOUSEHOLD DATA

Summary table A. Household data, seasonally adjusted

[Numbers in thousands]

Category	May 2011	Mar. 2012	Apr. 2012	May 2012	Change from: Apr. 2012-May 2012
Employment status					
Civilian noninstitutional population.....	239,313	242,604	242,784	242,966	182
Civilian labor force.....	153,700	154,707	154,365	155,007	642
Participation rate.....	64.2	63.8	63.6	63.8	0.2
Employed.....	139,808	142,034	141,865	142,287	422
Employment-population ratio.....	58.4	58.5	58.4	58.6	0.2
Unemployed.....	13,892	12,673	12,500	12,720	220
Unemployment rate.....	9.0	8.2	8.1	8.2	0.1
Not in labor force.....	85,613	87,897	88,419	87,958	-461
Unemployment rates					
Total, 16 years and over.....	9.0	8.2	8.1	8.2	0.1
Adult men (20 years and over).....	8.9	7.6	7.5	7.8	0.3
Adult women (20 years and over).....	8.0	7.4	7.4	7.4	0.0
Teenagers (16 to 19 years).....	24.1	25.0	24.9	24.6	-0.3
White.....	8.0	7.3	7.4	7.4	0.0
Black or African American.....	16.2	14.0	13.0	13.6	0.6
Asian (not seasonally adjusted).....	7.0	6.2	5.2	5.2	-
Hispanic or Latino ethnicity.....	11.8	10.3	10.3	11.0	0.7
Total, 25 years and over.....	7.8	6.8	6.8	6.9	0.1
Less than a high school diploma.....	14.6	12.6	12.5	13.0	0.5
High school graduates, no college.....	9.5	8.0	7.9	8.1	0.2
Some college or associate degree.....	8.0	7.5	7.6	7.9	0.3
Bachelor's degree and higher.....	4.5	4.2	4.0	3.9	-0.1
Reason for unemployment					
Job losers and persons who completed temporary jobs.....	8,250	7,020	6,852	6,989	137
Job leavers.....	919	1,117	997	891	-106
Reentrants.....	3,436	3,269	3,341	3,439	98
New entrants.....	1,229	1,433	1,384	1,367	-17
Duration of unemployment					
Less than 5 weeks.....	2,687	2,572	2,543	2,580	37
5 to 14 weeks.....	2,912	2,754	2,814	3,002	188
15 to 26 weeks.....	1,994	1,867	1,884	1,662	-222
27 weeks and over.....	6,204	5,308	5,101	5,411	310
Employed persons at work part time					
Part time for economic reasons.....	8,541	7,672	7,853	8,098	245
Slack work or business conditions.....	5,836	5,081	5,187	5,147	-40
Could only find part-time work.....	2,475	2,341	2,367	2,649	282
Part time for noneconomic reasons.....	18,481	18,523	18,832	19,393	561
Persons not in the labor force (not seasonally adjusted)					
Marginally attached to the labor force.....	2,206	2,352	2,363	2,423	-
Discouraged workers.....	822	865	968	830	-

- Over-the-month changes are not displayed for not seasonally adjusted data.

NOTE: Persons whose ethnicity is identified as Hispanic or Latino may be of any race. Detail for the seasonally adjusted data shown in this table will not necessarily add to totals because of the independent seasonal adjustment of the various series. Updated population controls are introduced annually with the release of January data.

ESTABLISHMENT DATA
Summary table B. Establishment data, seasonally adjusted

Category	May 2011	Mar. 2012	Apr. 2012 ^p	May 2012 ^p
EMPLOYMENT BY SELECTED INDUSTRY (Over-the-month change, in thousands)				
Total nonfarm.....	54	143	77	69
Total private.....	108	147	87	82
Goods-producing.....	20	28	4	-15
Mining and logging.....	9	0	0	1
Construction.....	3	-14	-5	-28
Manufacturing.....	8	42	9	12
Durable goods ¹	19	27	11	13
Motor vehicles and parts.....	-1.7	11.3	1.9	5.8
Nondurable goods.....	-11	15	-2	-1
Private service-providing ¹	88	119	83	97
Wholesale trade.....	7.6	5.2	11.1	15.9
Retail trade.....	-4.6	-14.9	27.0	2.3
Transportation and warehousing.....	7.5	6.1	-16.5	35.6
Information.....	0	-5	-1	-2
Financial activities.....	14	13	4	3
Professional and business services ¹	56	18	37	-1
Temporary help services.....	1.7	-13.2	12.6	9.2
Education and health services ¹	19	51	29	46
Health care and social assistance.....	25.7	33.4	20.9	34.0
Leisure and hospitality.....	-15	43	-6	-9
Other services.....	3	2	-1	6
Government.....	-54	-4	-10	-13
WOMEN AND PRODUCTION AND NONSUPERVISORY EMPLOYEES AS A PERCENT OF ALL EMPLOYEES ²				
Total nonfarm women employees.....	49.5	49.3	49.4	49.4
Total private women employees.....	48.0	47.8	47.8	47.9
Total private production and nonsupervisory employees.....	82.4	82.6	82.6	82.6
HOURS AND EARNINGS ALL EMPLOYEES				
Total private				
Average weekly hours.....	34.4	34.5	34.5	34.4
Average hourly earnings.....	\$ 23.02	\$ 23.37	\$ 23.39	\$ 23.41
Average weekly earnings.....	\$791.89	\$806.27	\$806.96	\$805.30
Index of aggregate weekly hours (2007=100) ³	94.0	95.9	95.9	95.7
Over-the-month percent change.....	0.0	-0.1	0.0	-0.2
Index of aggregate weekly payrolls (2007=100) ⁴	103.2	106.8	107.0	106.9
Over-the-month percent change.....	0.3	0.0	0.2	-0.1
HOURS AND EARNINGS PRODUCTION AND NONSUPERVISORY EMPLOYEES				
Total private				
Average weekly hours.....	33.6	33.7	33.7	33.7
Average hourly earnings.....	\$ 19.43	\$ 19.67	\$ 19.71	\$ 19.70
Average weekly earnings.....	\$652.85	\$662.88	\$664.23	\$663.89
Index of aggregate weekly hours (2002=100) ³	101.0	103.1	103.2	103.3
Over-the-month percent change.....	-0.2	-0.2	0.1	0.1
Index of aggregate weekly payrolls (2002=100) ⁴	131.1	135.5	136.0	136.0
Over-the-month percent change.....	0.0	-0.1	0.4	0.0
DIFFUSION INDEX (Over 1-month span) ⁵				
Total private (266 industries).....	54.5	63.5	55.6	59.4
Manufacturing (81 industries).....	54.3	69.8	53.7	54.3

1 Includes other industries, not shown separately.

2 Data relate to production employees in mining and logging and manufacturing, construction employees in construction, and nonsupervisory employees in the service-providing industries.

3 The indexes of aggregate weekly hours are calculated by dividing the current month's estimates of aggregate hours by the corresponding annual average aggregate hours.

4 The indexes of aggregate weekly payrolls are calculated by dividing the current month's estimates of aggregate weekly payrolls by the corresponding annual average aggregate weekly payrolls.

5 Figures are the percent of industries with employment increasing plus one-half of the industries with unchanged employment, where 50 percent indicates an equal balance between industries with increasing and decreasing employment.

p Preliminary

NOTE: Data in this table have been corrected. For more information see http://www.bls.gov/bls/ceswomen_usps_correction.htm.

Frequently Asked Questions about Employment and Unemployment Estimates

Why are there two monthly measures of employment?

The household survey and establishment survey both produce sample-based estimates of employment and both have strengths and limitations. The establishment survey employment series has a smaller margin of error on the measurement of month-to-month change than the household survey because of its much larger sample size. An over-the-month employment change of about 100,000 is statistically significant in the establishment survey, while the threshold for a statistically significant change in the household survey is about 400,000. However, the household survey has a more expansive scope than the establishment survey because it includes the self-employed, unpaid family workers, agricultural workers, and private household workers, who are excluded by the establishment survey. The household survey also provides estimates of employment for demographic groups.

Are undocumented immigrants counted in the surveys?

It is likely that both surveys include at least some undocumented immigrants. However, neither the establishment nor the household survey is designed to identify the legal status of workers. Therefore, it is not possible to determine how many are counted in either survey. The establishment survey does not collect data on the legal status of workers. The household survey does include questions which identify the foreign and native born, but it does not include questions about the legal status of the foreign born.

Why does the establishment survey have revisions?

The establishment survey revises published estimates to improve its data series by incorporating additional information that was not available at the time of the initial publication of the estimates. The establishment survey revises its initial monthly estimates twice, in the immediately succeeding 2 months, to incorporate additional sample receipts from respondents in the survey and recalculated seasonal adjustment factors. For more information on the monthly revisions, please visit www.bls.gov/ces/cesrevinfo.htm.

On an annual basis, the establishment survey incorporates a benchmark revision that re-anchors estimates to nearly complete employment counts available from unemployment insurance tax records. The benchmark helps to control for sampling and modeling errors in the estimates. For more information on the annual benchmark revision, please visit www.bls.gov/web/cesbmart.htm.

Does the establishment survey sample include small firms?

Yes; about 40 percent of the establishment survey sample is comprised of business establishments with fewer than 20 employees. The establishment survey sample is designed to maximize the reliability of the total nonfarm employment estimate; firms from all size classes and industries are appropriately sampled to achieve that goal.

Does the establishment survey account for employment from new businesses?

Yes; monthly establishment survey estimates include an adjustment to account for the net employment change generated by business births and deaths. The adjustment comes from an econometric model that forecasts the monthly net jobs impact of business births and deaths based on the actual past values of the net impact that can be observed with a lag from the Quarterly Census of Employment and Wages. The

establishment survey uses modeling rather than sampling for this purpose because the survey is not immediately able to bring new businesses into the sample. There is an unavoidable lag between the birth of a new firm and its appearance on the sampling frame and availability for selection. BLS adds new businesses to the survey twice a year.

Is the count of unemployed persons limited to just those people receiving unemployment insurance benefits?

No; the estimate of unemployment is based on a monthly sample survey of households. All persons who are without jobs and are actively seeking and available to work are included among the unemployed. (People on temporary layoff are included even if they do not actively seek work.) There is no requirement or question relating to unemployment insurance benefits in the monthly survey.

Does the official unemployment rate exclude people who have stopped looking for work?

Yes; however, there are separate estimates of persons outside the labor force who want a job, including those who have stopped looking because they believe no jobs are available (discouraged workers). In addition, alternative measures of labor underutilization (some of which include discouraged workers and other groups not officially counted as unemployed) are published each month in The Employment Situation news release.

How can unusually severe weather affect employment and hours estimates?

In the establishment survey, the reference period is the pay period that includes the 12th of the month. Unusually severe weather is more likely to have an impact on average weekly hours than on employment. Average weekly hours are estimated for paid time during the pay period, including pay for holidays, sick leave, or other time off. The impact of severe weather on hours estimates typically, but not always, results in a reduction in average weekly hours. For example, some employees may be off work for part of the pay period and not receive pay for the time missed, while some workers, such as those dealing with cleanup or repair, may work extra hours.

In order for severe weather conditions to reduce the estimate of payroll employment, employees have to be off work without pay for the entire pay period. About half of all employees in the payroll survey have a 2-week, semi-monthly, or monthly pay period. Employees who receive pay for any part of the pay period, even 1 hour, are counted in the payroll employment figures. It is not possible to quantify the effect of extreme weather on estimates of employment from the establishment survey.

In the household survey, the reference period is generally the calendar week that includes the 12th of the month. Persons who miss the entire week's work for weather-related events are counted as employed whether or not they are paid for the time off. The household survey collects data on the number of persons who usually work full time but had reduced hours, or had a job but were not at work the entire week, due to bad weather. Current and historical data are available on the household survey's most requested statistics page at <http://data.bls.gov/cgi-bin/surveymost?ln>.

Technical Note

This news release presents statistics from two major surveys, the Current Population Survey (CPS; household survey) and the Current Employment Statistics survey (CES; establishment survey). The household survey provides information on the labor force, employment, and unemployment that appears in the "A" tables, marked HOUSEHOLD DATA. It is a sample survey of about 60,000 eligible households conducted by the U.S. Census Bureau for the U.S. Bureau of Labor Statistics (BLS).

The establishment survey provides information on employment, hours, and earnings of employees on nonfarm payrolls; the data appear in the "B" tables, marked ESTABLISHMENT DATA. BLS collects these data each month from the payroll records of a sample of nonagricultural business establishments. Each month the CES program surveys about 141,000 businesses and government agencies, representing approximately 486,000 individual worksites, in order to provide detailed industry data on employment, hours, and earnings of workers on nonfarm payrolls. The active sample includes approximately one-third of all nonfarm payroll employees.

For both surveys, the data for a given month relate to a particular week or pay period. In the household survey, the reference period is generally the calendar week that contains the 12th day of the month. In the establishment survey, the reference period is the pay period including the 12th, which may or may not correspond directly to the calendar week.

Coverage, definitions, and differences between surveys

Household survey. The sample is selected to reflect the entire civilian noninstitutional population. Based on responses to a series of questions on work and job search activities, each person 16 years and over in a sample household is classified as employed, unemployed, or not in the labor force.

People are classified as *employed* if they did any work at all as paid employees during the reference week; worked in their own business, profession, or on their own farm; or worked without pay at least 15 hours in a family business or farm. People are also counted as employed if they were temporarily absent from their jobs because of illness, bad weather, vacation, labor-management disputes, or personal reasons.

People are classified as *unemployed* if they meet all of the following criteria: they had no employment during the reference week; they were available for work at that time; and they made specific efforts to find employment sometime during the 4-week period ending with the reference week. Persons laid off from a job and expecting recall need not be looking for work to be counted as unemployed. The unemployment data derived from the household survey in no way depend upon the eligibility for or receipt of unemployment insurance benefits.

The *civilian labor force* is the sum of employed and

unemployed persons. Those not classified as employed or unemployed are *not in the labor force*. The *unemployment rate* is the number unemployed as a percent of the labor force. The *labor force participation rate* is the labor force as a percent of the population, and the *employment-population ratio* is the employed as a percent of the population. Additional information about the household survey can be found at www.bls.gov/cps/documentation.htm.

Establishment survey. The sample establishments are drawn from private nonfarm businesses such as factories, offices, and stores, as well as from federal, state, and local government entities. *Employees on nonfarm payrolls* are those who received pay for any part of the reference pay period, including persons on paid leave. Persons are counted in each job they hold. *Hours and earnings* data are produced for the private sector for all employees and for production and nonsupervisory employees. *Production and nonsupervisory employees* are defined as production and related employees in manufacturing and mining and logging, construction workers in construction, and non-supervisory employees in private service-providing industries.

Industries are classified on the basis of an establishment's principal activity in accordance with the 2012 version of the North American Industry Classification System. Additional information about the establishment survey can be found at www.bls.gov/ces/#technical.

Differences in employment estimates. The numerous conceptual and methodological differences between the household and establishment surveys result in important distinctions in the employment estimates derived from the surveys. Among these are:

- The household survey includes agricultural workers, the self-employed, unpaid family workers, and private household workers among the employed. These groups are excluded from the establishment survey.
- The household survey includes people on unpaid leave among the employed. The establishment survey does not.
- The household survey is limited to workers 16 years of age and older. The establishment survey is not limited by age.
- The household survey has no duplication of individuals, because individuals are counted only once, even if they hold more than one job. In the establishment survey, employees working at more than one job and thus appearing on more than one payroll are counted separately for each appearance.

Seasonal adjustment

Over the course of a year, the size of the nation's labor force and the levels of employment and unemployment undergo regularly occurring fluctuations. These events may result from seasonal changes in weather, major holidays, and the opening and closing of schools. The effect of such seasonal variation can be very large.

Because these seasonal events follow a more or less regular pattern each year, their influence on the level of a series can be tempered by adjusting for regular seasonal variation. These adjustments make nonseasonal developments, such as declines in employment or increases in the participation of women in the labor force, easier to spot. For example, in the household survey, the large number of youth entering the labor force each June is likely to obscure any other changes that have taken place relative to May, making it difficult to determine if the level of economic activity has risen or declined. Similarly, in the establishment survey, payroll employment in education declines by about 20 percent at the end of the spring term and later rises with the start of the fall term, obscuring the underlying employment trends in the industry. Because seasonal employment changes at the end and beginning of the school year can be estimated, the statistics can be adjusted to make underlying employment patterns more discernable. The seasonally adjusted figures provide a more useful tool with which to analyze changes in month-to-month economic activity.

Many seasonally adjusted series are independently adjusted in both the household and establishment surveys. However, the adjusted series for many major estimates, such as total payroll employment, employment in most major sectors, total employment, and unemployment are computed by aggregating independently adjusted component series. For example, total unemployment is derived by summing the adjusted series for four major age-sex components; this differs from the unemployment estimate that would be obtained by directly adjusting the total or by combining the duration, reasons, or more detailed age categories.

For both the household and establishment surveys, a concurrent seasonal adjustment methodology is used in which new seasonal factors are calculated each month using all relevant data, up to and including the data for the current month. In the household survey, new seasonal factors are used to adjust only the current month's data. In the establishment survey, however, new seasonal factors are used each month to adjust the three most recent monthly estimates. The prior 2 months are routinely revised to incorporate additional sample reports and recalculated seasonal adjustment factors. In both surveys, 5-year revisions to historical data are made once a year.

Reliability of the estimates

Statistics based on the household and establishment surveys are subject to both sampling and nonsampling error. When a sample rather than the entire population is

surveyed, there is a chance that the sample estimates may differ from the "true" population values they represent. The exact difference, or *sampling error*, varies depending on the particular sample selected, and this variability is measured by the standard error of the estimate. There is about a 90-percent chance, or level of confidence, that an estimate based on a sample will differ by no more than 1.6 standard errors from the "true" population value because of sampling error. BLS analyses are generally conducted at the 90-percent level of confidence.

For example, the confidence interval for the monthly change in total nonfarm employment from the establishment survey is on the order of plus or minus 100,000. Suppose the estimate of nonfarm employment increases by 50,000 from one month to the next. The 90-percent confidence interval on the monthly change would range from -50,000 to +150,000 (50,000 +/- 100,000). These figures do not mean that the sample results are off by these magnitudes, but rather that there is about a 90-percent chance that the "true" over-the-month change lies within this interval. Since this range includes values of less than zero, we could not say with confidence that nonfarm employment had, in fact, increased that month. If, however, the reported nonfarm employment rise was 250,000, then all of the values within the 90-percent confidence interval would be greater than zero. In this case, it is likely (at least a 90-percent chance) that nonfarm employment had, in fact, risen that month. At an unemployment rate of around 5.5 percent, the 90-percent confidence interval for the monthly change in unemployment as measured by the household survey is about +/- 280,000, and for the monthly change in the unemployment rate it is about +/- 0.19 percentage point.

In general, estimates involving many individuals or establishments have lower standard errors (relative to the size of the estimate) than estimates which are based on a small number of observations. The precision of estimates also is improved when the data are cumulated over time, such as for quarterly and annual averages.

The household and establishment surveys are also affected by *nonsampling error*, which can occur for many reasons, including the failure to sample a segment of the population, inability to obtain information for all respondents in the sample, inability or unwillingness of respondents to provide correct information on a timely basis, mistakes made by respondents, and errors made in the collection or processing of the data.

For example, in the establishment survey, estimates for the most recent 2 months are based on incomplete returns; for this reason, these estimates are labeled preliminary in the tables. It is only after two successive revisions to a monthly estimate, when nearly all sample reports have been received, that the estimate is considered final.

Another major source of nonsampling error in the establishment survey is the inability to capture, on a timely basis, employment generated by new firms. To correct for this systematic underestimation of employment growth, an estimation procedure with two components is used to account for business births. The first component excludes

employment losses from business deaths from sample-based estimation in order to offset the missing employment gains from business births. This is incorporated into the sample-based estimation procedure by simply not reflecting sample units going out of business, but imputing to them the same employment trend as the other firms in the sample. This procedure accounts for most of the net birth/death employment.

The second component is an ARIMA time series model designed to estimate the residual net birth/death employment not accounted for by the imputation. The historical time series used to create and test the ARIMA model was derived from the unemployment insurance universe micro-level database, and reflects the actual residual net of births and deaths over the past 5 years.

The sample-based estimates from the establishment survey are adjusted once a year (on a lagged basis) to

universe counts of payroll employment obtained from administrative records of the unemployment insurance program. The difference between the March sample-based employment estimates and the March universe counts is known as a benchmark revision, and serves as a rough proxy for total survey error. The new benchmarks also incorporate changes in the classification of industries. Over the past decade, absolute benchmark revisions for total nonfarm employment have averaged 0.3 percent, with a range from -0.7 to 0.6 percent.

Other information

Information in this release will be made available to sensory impaired individuals upon request. Voice phone: (202) 691-5200; Federal Relay Service: (800) 877-8339.

HOUSEHOLD DATA

Table A-1. Employment status of the civilian population by sex and age

[Numbers in thousands]

Employment status, sex, and age	Not seasonally adjusted			Seasonally adjusted ¹					
	May 2011	Apr. 2012	May 2012	May 2011	Jan. 2012	Feb. 2012	Mar. 2012	Apr. 2012	May 2012
TOTAL									
Civilian noninstitutional population.....	239,313	242,784	242,966	239,313	242,269	242,435	242,604	242,784	242,966
Civilian labor force.....	153,449	153,905	154,998	153,700	154,395	154,871	154,707	154,365	155,007
Participation rate.....	64.1	63.4	63.8	64.2	63.7	63.9	63.8	63.6	63.8
Employed.....	140,028	141,995	142,727	139,808	141,637	142,065	142,034	141,865	142,287
Employment-population ratio.....	58.5	58.5	58.7	58.4	58.5	58.6	58.5	58.4	58.6
Unemployed.....	13,421	11,910	12,271	13,892	12,758	12,806	12,673	12,500	12,720
Unemployment rate.....	8.7	7.7	7.9	9.0	8.3	8.3	8.2	8.1	8.2
Not in labor force.....	85,864	88,879	87,968	85,613	87,874	87,564	87,897	88,419	87,958
Persons who currently want a job.....	6,821	6,328	6,835	6,216	6,319	6,378	6,299	6,366	6,291
Men, 16 years and over									
Civilian noninstitutional population.....	116,156	117,081	117,177	116,156	116,808	116,896	116,986	117,081	117,177
Civilian labor force.....	81,956	81,629	82,409	82,019	82,070	82,165	82,179	81,983	82,350
Participation rate.....	70.6	69.7	70.3	70.6	70.3	70.3	70.2	70.0	70.3
Employed.....	74,441	75,074	75,712	74,217	75,288	75,318	75,369	75,256	75,401
Employment-population ratio.....	64.1	64.1	64.6	63.9	64.5	64.4	64.4	64.3	64.3
Unemployed.....	7,515	6,555	6,697	7,802	6,781	6,846	6,810	6,727	6,949
Unemployment rate.....	9.2	8.0	8.1	9.5	8.3	8.3	8.3	8.2	8.4
Not in labor force.....	34,200	35,452	34,768	34,137	34,739	34,732	34,807	35,098	34,827
Men, 20 years and over									
Civilian noninstitutional population.....	107,566	108,396	108,503	107,566	108,087	108,188	108,289	108,396	108,503
Civilian labor force.....	79,223	78,839	79,511	79,204	79,234	79,317	79,337	79,050	79,382
Participation rate.....	73.7	72.7	73.3	73.6	73.3	73.3	73.3	72.9	73.2
Employed.....	72,427	73,010	73,567	72,161	73,170	73,240	73,286	73,119	73,229
Employment-population ratio.....	67.3	67.4	67.8	67.1	67.7	67.7	67.7	67.5	67.5
Unemployed.....	6,796	5,829	5,945	7,043	6,064	6,077	6,051	5,930	6,153
Unemployment rate.....	8.6	7.4	7.5	8.9	7.7	7.7	7.6	7.5	7.8
Not in labor force.....	28,344	29,557	28,991	28,362	28,853	28,870	28,952	29,346	29,121
Women, 16 years and over									
Civilian noninstitutional population.....	123,157	125,703	125,788	123,157	125,461	125,539	125,619	125,703	125,788
Civilian labor force.....	71,492	72,276	72,589	71,681	72,326	72,706	72,529	72,382	72,657
Participation rate.....	58.0	57.5	57.7	58.2	57.6	57.9	57.7	57.6	57.8
Employed.....	65,587	66,921	67,015	65,591	66,349	66,747	66,665	66,609	66,886
Employment-population ratio.....	53.3	53.2	53.3	53.3	52.9	53.2	53.1	53.0	53.2
Unemployed.....	5,905	5,355	5,574	6,090	5,977	5,960	5,863	5,773	5,771
Unemployment rate.....	8.3	7.4	7.7	8.5	8.3	8.2	8.1	8.0	7.9
Not in labor force.....	51,664	53,427	53,200	51,476	53,135	52,833	53,090	53,321	53,131
Women, 20 years and over									
Civilian noninstitutional population.....	114,954	117,353	117,448	114,954	117,082	117,170	117,260	117,353	117,448
Civilian labor force.....	68,728	69,643	69,775	68,878	69,449	69,815	69,589	69,562	69,807
Participation rate.....	59.8	59.3	59.4	59.9	59.3	59.6	59.3	59.3	59.4
Employed.....	63,423	64,822	64,840	63,385	64,078	64,454	64,413	64,425	64,671
Employment-population ratio.....	55.2	55.2	55.2	55.1	54.7	55.0	54.9	54.9	55.1
Unemployed.....	5,305	4,820	4,936	5,493	5,370	5,361	5,176	5,137	5,136
Unemployment rate.....	7.7	6.9	7.1	8.0	7.7	7.7	7.4	7.4	7.4
Not in labor force.....	46,226	47,711	47,672	46,077	47,634	47,355	47,671	47,791	47,641
Both sexes, 16 to 19 years									
Civilian noninstitutional population.....	16,792	17,034	17,015	16,792	17,100	17,078	17,056	17,034	17,015
Civilian labor force.....	5,498	5,423	5,711	5,618	5,713	5,739	5,781	5,753	5,819
Participation rate.....	32.7	31.8	33.6	33.5	33.4	33.6	33.9	33.8	34.2
Employed.....	4,177	4,163	4,320	4,262	4,389	4,371	4,335	4,321	4,388
Employment-population ratio.....	24.9	24.4	25.4	25.4	25.7	25.6	25.4	25.4	25.8
Unemployed.....	1,320	1,260	1,391	1,356	1,324	1,367	1,447	1,432	1,431
Unemployment rate.....	24.0	23.2	24.4	24.1	23.2	23.8	25.0	24.9	24.6
Not in labor force.....	11,295	11,611	11,304	11,174	11,387	11,339	11,274	11,282	11,197

¹ The population figures are not adjusted for seasonal variation; therefore, identical numbers appear in the unadjusted and seasonally adjusted columns.

NOTE: Updated population controls are introduced annually with the release of January data.

HOUSEHOLD DATA

Table A-2. Employment status of the civilian population by race, sex, and age

[Numbers in thousands]

Employment status, race, sex, and age	Not seasonally adjusted			Seasonally adjusted ¹					
	May 2011	Apr. 2012	May 2012	May 2011	Jan. 2012	Feb. 2012	Mar. 2012	Apr. 2012	May 2012
WHITE									
Civilian noninstitutional population.....	192,877	192,893	193,004	192,877	192,600	192,691	192,788	192,893	193,004
Civilian labor force.....	124,608	122,997	123,897	124,812	123,579	123,848	123,713	123,499	123,989
Participation rate.....	64.6	63.8	64.2	64.7	64.2	64.3	64.2	64.0	64.2
Employed.....	114,989	114,313	115,015	114,827	114,458	114,754	114,697	114,355	114,767
Employment-population ratio.....	59.6	59.3	59.6	59.5	59.4	59.6	59.5	59.3	59.5
Unemployed.....	9,618	8,684	8,882	9,985	9,121	9,094	9,016	9,144	9,222
Unemployment rate.....	7.7	7.1	7.2	8.0	7.4	7.3	7.3	7.4	7.4
Not in labor force.....	68,269	69,896	69,107	68,065	69,021	68,843	69,076	69,394	69,015
Men, 20 years and over									
Civilian labor force.....	65,416	64,212	64,680	65,372	64,495	64,642	64,552	64,410	64,591
Participation rate.....	74.3	73.3	73.8	74.2	73.8	73.9	73.8	73.5	73.7
Employed.....	60,472	59,975	60,349	60,212	60,059	60,245	60,192	60,046	60,072
Employment-population ratio.....	68.7	68.5	68.8	68.4	68.7	68.9	68.8	68.6	68.5
Unemployed.....	4,943	4,237	4,331	5,160	4,436	4,397	4,360	4,364	4,519
Unemployment rate.....	7.6	6.6	6.7	7.9	6.9	6.8	6.8	6.8	7.0
Women, 20 years and over									
Civilian labor force.....	54,709	54,421	54,620	54,872	54,434	54,609	54,473	54,435	54,717
Participation rate.....	59.5	58.8	58.9	59.7	58.9	59.0	58.9	58.8	59.0
Employed.....	50,956	50,919	51,087	50,976	50,729	50,890	50,873	50,719	51,045
Employment-population ratio.....	55.4	55.0	55.1	55.4	54.9	55.0	55.0	54.8	55.1
Unemployed.....	3,753	3,502	3,533	3,895	3,705	3,719	3,600	3,716	3,672
Unemployment rate.....	6.9	6.4	6.5	7.1	6.8	6.8	6.6	6.8	6.7
Both sexes, 16 to 19 years									
Civilian labor force.....	4,483	4,365	4,597	4,568	4,650	4,596	4,688	4,654	4,681
Participation rate.....	34.9	34.4	36.3	35.6	36.5	36.1	36.9	36.7	36.9
Employed.....	3,561	3,419	3,579	3,638	3,670	3,619	3,632	3,591	3,649
Employment-population ratio.....	27.8	26.9	28.2	28.4	28.8	28.4	28.6	28.3	28.8
Unemployed.....	922	946	1,018	929	980	977	1,056	1,063	1,031
Unemployment rate.....	20.6	21.7	22.1	20.3	21.1	21.3	22.5	22.8	22.0
BLACK OR AFRICAN AMERICAN									
Civilian noninstitutional population.....	29,063	29,824	29,854	29,063	29,727	29,760	29,792	29,824	29,854
Civilian labor force.....	17,705	18,227	18,275	17,730	18,206	18,363	18,427	18,274	18,290
Participation rate.....	60.9	61.1	61.2	61.0	61.2	61.7	61.9	61.3	61.3
Employed.....	14,867	15,940	15,837	14,862	15,725	15,769	15,843	15,891	15,807
Employment-population ratio.....	51.2	53.4	53.0	51.1	52.9	53.0	53.2	53.3	52.9
Unemployed.....	2,838	2,286	2,438	2,868	2,482	2,593	2,584	2,383	2,484
Unemployment rate.....	16.0	12.5	13.3	16.2	13.6	14.1	14.0	13.0	13.6
Not in labor force.....	11,358	11,597	11,579	11,333	11,521	11,398	11,365	11,550	11,564
Men, 20 years and over									
Civilian labor force.....	8,024	8,133	8,270	8,038	8,256	8,239	8,283	8,162	8,281
Participation rate.....	67.7	67.0	68.0	67.8	68.4	68.1	68.4	67.3	68.1
Employed.....	6,618	7,018	7,082	6,639	7,205	7,064	7,137	7,054	7,102
Employment-population ratio.....	55.8	57.8	58.3	56.0	59.7	58.4	58.9	58.1	58.4
Unemployed.....	1,406	1,114	1,188	1,399	1,052	1,175	1,147	1,108	1,179
Unemployment rate.....	17.5	13.7	14.4	17.4	12.7	14.3	13.8	13.6	14.2
Women, 20 years and over									
Civilian labor force.....	9,041	9,459	9,327	9,058	9,287	9,410	9,473	9,443	9,346
Participation rate.....	61.9	62.9	62.0	62.0	62.0	62.8	63.1	62.8	62.1
Employed.....	7,868	8,503	8,317	7,848	8,113	8,240	8,307	8,423	8,284
Employment-population ratio.....	53.9	56.6	55.3	53.7	54.2	55.0	55.4	56.1	55.1
Unemployed.....	1,172	956	1,011	1,210	1,174	1,171	1,166	1,019	1,062
Unemployment rate.....	13.0	10.1	10.8	13.4	12.6	12.4	12.3	10.8	11.4
Both sexes, 16 to 19 years									
Civilian labor force.....	640	635	678	635	663	713	671	669	664
Participation rate.....	24.6	23.9	25.5	24.4	24.7	26.6	25.1	25.1	25.0
Employed.....	380	419	439	375	407	466	399	413	421
Employment-population ratio.....	14.6	15.7	16.5	14.4	15.2	17.4	14.9	15.5	15.9
Unemployed.....	260	216	239	259	255	247	272	256	242
Unemployment rate.....	40.6	34.1	35.2	40.8	38.5	34.7	40.5	38.2	36.5
ASIAN									
Civilian noninstitutional population.....	11,350	12,774	12,749	-	-	-	-	-	-

See footnotes at end of table.

HOUSEHOLD DATA

Table A-2. Employment status of the civilian population by race, sex, and age — Continued

[Numbers in thousands]

Employment status, race, sex, and age	Not seasonally adjusted			Seasonally adjusted ¹					
	May 2011	Apr. 2012	May 2012	May 2011	Jan. 2012	Feb. 2012	Mar. 2012	Apr. 2012	May 2012
Civilian labor force.....	7,377	7,965	8,080	-	-	-	-	-	-
Participation rate.....	65.0	62.4	63.4	-	-	-	-	-	-
Employed.....	6,863	7,553	7,656	-	-	-	-	-	-
Employment-population ratio.....	60.5	59.1	60.0	-	-	-	-	-	-
Unemployed.....	514	412	424	-	-	-	-	-	-
Unemployment rate.....	7.0	5.2	5.2	-	-	-	-	-	-
Not in labor force.....	3,973	4,809	4,669	-	-	-	-	-	-

¹ The population figures are not adjusted for seasonal variation; therefore, identical numbers appear in the unadjusted and seasonally adjusted columns.

- Data not available.

NOTE: Estimates for the above race groups will not sum to totals shown in table A-1 because data are not presented for all races. Updated population controls are introduced annually with the release of January data.

HOUSEHOLD DATA

Table A-3. Employment status of the Hispanic or Latino population by sex and age

[Numbers in thousands]

Employment status, sex, and age	Not seasonally adjusted			Seasonally adjusted ¹					
	May 2011	Apr. 2012	May 2012	May 2011	Jan. 2012	Feb. 2012	Mar. 2012	Apr. 2012	May 2012
HISPANIC OR LATINO ETHNICITY									
Civilian noninstitutional population.....	34,311	36,546	36,626	34,311	36,301	36,384	36,463	36,546	36,626
Civilian labor force.....	22,642	24,201	24,534	22,754	24,045	24,206	24,128	24,253	24,567
Participation rate.....	66.0	66.2	67.0	66.3	66.2	66.5	66.2	66.4	67.1
Employed.....	20,124	21,839	21,984	20,060	21,513	21,628	21,638	21,755	21,867
Employment-population ratio.....	58.7	59.8	60.0	58.5	59.3	59.4	59.3	59.5	59.7
Unemployed.....	2,518	2,362	2,550	2,695	2,532	2,579	2,491	2,498	2,700
Unemployment rate.....	11.1	9.8	10.4	11.8	10.5	10.7	10.3	10.3	11.0
Not in labor force.....	11,668	12,345	12,092	11,557	12,256	12,178	12,335	12,293	12,059
Men, 20 years and over									
Civilian labor force.....	12,940	13,284	13,486	-	-	-	-	-	-
Participation rate.....	81.5	80.8	81.8	-	-	-	-	-	-
Employed.....	11,636	12,146	12,195	-	-	-	-	-	-
Employment-population ratio.....	73.3	73.9	74.0	-	-	-	-	-	-
Unemployed.....	1,304	1,138	1,291	-	-	-	-	-	-
Unemployment rate.....	10.1	8.6	9.6	-	-	-	-	-	-
Women, 20 years and over									
Civilian labor force.....	8,799	9,826	9,904	-	-	-	-	-	-
Participation rate.....	58.5	59.7	60.1	-	-	-	-	-	-
Employed.....	7,820	8,886	8,993	-	-	-	-	-	-
Employment-population ratio.....	52.0	54.0	54.5	-	-	-	-	-	-
Unemployed.....	979	939	911	-	-	-	-	-	-
Unemployment rate.....	11.1	9.6	9.2	-	-	-	-	-	-
Both sexes, 16 to 19 years									
Civilian labor force.....	904	1,092	1,144	-	-	-	-	-	-
Participation rate.....	26.6	29.9	31.3	-	-	-	-	-	-
Employed.....	668	807	796	-	-	-	-	-	-
Employment-population ratio.....	19.7	22.1	21.8	-	-	-	-	-	-
Unemployed.....	236	285	348	-	-	-	-	-	-
Unemployment rate.....	26.1	26.1	30.4	-	-	-	-	-	-

1 The population figures are not adjusted for seasonal variation; therefore, identical numbers appear in the unadjusted and seasonally adjusted columns.

- Data not available.

NOTE: Persons whose ethnicity is identified as Hispanic or Latino may be of any race. Updated population controls are introduced annually with the release of January data.

HOUSEHOLD DATA

Table A-4. Employment status of the civilian population 25 years and over by educational attainment

[Numbers in thousands]

Educational attainment	Not seasonally adjusted			Seasonally adjusted					
	May 2011	Apr. 2012	May 2012	May 2011	Jan. 2012	Feb. 2012	Mar. 2012	Apr. 2012	May 2012
Less than a high school diploma									
Civilian labor force.....	11,669	11,490	11,670	11,468	11,469	11,488	11,493	11,366	11,451
Participation rate.....	46.0	45.7	45.8	45.2	45.6	46.6	46.3	45.2	44.9
Employed.....	10,072	10,069	10,242	9,789	9,968	10,006	10,044	9,947	9,960
Employment-population ratio.....	39.7	40.1	40.2	38.6	39.7	40.6	40.4	39.6	39.1
Unemployed.....	1,597	1,421	1,428	1,678	1,501	1,483	1,449	1,419	1,491
Unemployment rate.....	13.7	12.4	12.2	14.6	13.1	12.9	12.6	12.5	13.0
High school graduates, no college¹									
Civilian labor force.....	37,670	36,812	37,119	37,591	36,850	36,799	36,475	36,718	36,924
Participation rate.....	60.4	59.3	59.8	60.3	59.6	59.0	59.0	59.2	59.5
Employed.....	34,247	33,959	34,239	34,018	33,737	33,761	33,573	33,834	33,928
Employment-population ratio.....	54.9	54.7	55.2	54.5	54.6	54.1	54.3	54.5	54.7
Unemployed.....	3,423	2,852	2,880	3,573	3,113	3,039	2,902	2,884	2,996
Unemployment rate.....	9.1	7.7	7.8	9.5	8.4	8.3	8.0	7.9	8.1
Some college or associate degree									
Civilian labor force.....	36,659	36,966	36,899	36,784	37,214	37,282	37,405	37,168	37,079
Participation rate.....	69.4	68.6	68.5	69.7	69.2	69.1	69.3	69.0	68.8
Employed.....	33,898	34,270	34,157	33,828	34,525	34,571	34,613	34,344	34,155
Employment-population ratio.....	64.2	63.6	63.4	64.1	64.2	64.1	64.2	63.7	63.4
Unemployed.....	2,761	2,696	2,741	2,956	2,689	2,711	2,793	2,824	2,924
Unemployment rate.....	7.5	7.3	7.4	8.0	7.2	7.3	7.5	7.6	7.9
Bachelor's degree and higher²									
Civilian labor force.....	46,778	48,075	48,191	46,898	47,481	47,890	48,191	47,977	48,232
Participation rate.....	77.2	76.4	76.7	77.4	75.6	76.4	76.2	76.2	76.8
Employed.....	44,766	46,310	46,408	44,803	45,492	45,875	46,189	46,062	46,355
Employment-population ratio.....	73.9	73.6	73.9	74.0	72.4	73.1	73.1	73.2	73.8
Unemployed.....	2,012	1,765	1,783	2,095	1,989	2,015	2,002	1,915	1,877
Unemployment rate.....	4.3	3.7	3.7	4.5	4.2	4.2	4.2	4.0	3.9

1 Includes persons with a high school diploma or equivalent.

2 Includes persons with bachelor's, master's, professional, and doctoral degrees.

NOTE: Updated population controls are introduced annually with the release of January data.

HOUSEHOLD DATA

Table A-5. Employment status of the civilian population 18 years and over by veteran status, period of service, and sex, not seasonally adjusted

[Numbers in thousands]

Employment status, veteran status, and period of service	Total		Men		Women	
	May 2011	May 2012	May 2011	May 2012	May 2011	May 2012
VETERANS, 18 years and over						
Civilian noninstitutional population.....	21,664	21,224	19,864	19,412	1,800	1,812
Civilian labor force.....	11,421	11,228	10,316	10,077	1,105	1,152
Participation rate.....	52.7	52.9	51.9	51.9	61.4	63.6
Employed.....	10,477	10,348	9,457	9,263	1,020	1,085
Employment-population ratio.....	48.4	48.8	47.6	47.7	56.7	59.9
Unemployed.....	944	880	859	814	85	67
Unemployment rate.....	8.3	7.8	8.3	8.1	7.7	5.8
Not in labor force.....	10,243	9,996	9,548	9,335	695	660
Gulf War-era II veterans						
Civilian noninstitutional population.....	2,394	2,620	1,984	2,178	409	442
Civilian labor force.....	1,923	2,074	1,647	1,781	276	293
Participation rate.....	80.3	79.2	83.0	81.8	67.3	66.2
Employed.....	1,691	1,812	1,435	1,556	256	256
Employment-population ratio.....	70.6	69.1	72.3	71.4	62.4	57.8
Unemployed.....	232	263	212	226	20	37
Unemployment rate.....	12.1	12.7	12.9	12.7	7.3	12.7
Not in labor force.....	471	546	337	397	134	149
Gulf War-era I veterans						
Civilian noninstitutional population.....	2,850	3,032	2,420	2,545	430	487
Civilian labor force.....	2,374	2,571	2,073	2,185	301	386
Participation rate.....	83.3	84.8	85.7	85.8	70.1	79.2
Employed.....	2,207	2,410	1,929	2,039	278	370
Employment-population ratio.....	77.5	79.5	79.7	80.1	64.8	76.0
Unemployed.....	167	161	144	145	23	16
Unemployment rate.....	7.0	6.3	6.9	6.6	7.5	4.1
Not in labor force.....	476	462	347	360	129	101
World War II, Korean War, and Vietnam-era veterans						
Civilian noninstitutional population.....	10,470	9,936	10,139	9,615	331	321
Civilian labor force.....	3,605	3,369	3,480	3,250	124	118
Participation rate.....	34.4	33.9	34.3	33.8	37.6	36.9
Employed.....	3,337	3,135	3,223	3,023	114	112
Employment-population ratio.....	31.9	31.6	31.8	31.4	34.5	35.0
Unemployed.....	267	234	257	228	10	6
Unemployment rate.....	7.4	6.9	7.4	7.0	8.1	5.2
Not in labor force.....	6,866	6,567	6,659	6,365	207	202
Veterans of other service periods						
Civilian noninstitutional population.....	5,950	5,636	5,320	5,074	630	562
Civilian labor force.....	3,519	3,215	3,115	2,860	404	354
Participation rate.....	59.1	57.0	58.6	56.4	64.1	63.1
Employed.....	3,242	2,992	2,870	2,645	372	347
Employment-population ratio.....	54.5	53.1	53.9	52.1	59.0	61.8
Unemployed.....	278	223	245	215	32	7
Unemployment rate.....	7.9	6.9	7.9	7.5	8.0	2.1
Not in labor force.....	2,431	2,421	2,205	2,214	226	207
NONVETERANS, 18 years and over						
Civilian noninstitutional population.....	209,119	212,936	91,916	93,271	117,203	119,665
Civilian labor force.....	140,321	141,926	70,803	71,452	69,517	70,474
Participation rate.....	67.1	66.7	77.0	76.6	59.3	58.9
Employed.....	128,348	131,032	64,405	65,822	63,943	65,211
Employment-population ratio.....	61.4	61.5	70.1	70.6	54.6	54.5
Unemployed.....	11,973	10,894	6,398	5,631	5,574	5,263
Unemployment rate.....	8.5	7.7	9.0	7.9	8.0	7.5
Not in labor force.....	68,799	71,010	21,113	21,819	47,686	49,191

NOTE: Veterans served on active duty in the U.S. Armed Forces and were not on active duty at the time of the survey. Nonveterans never served on active duty in the U.S. Armed Forces. Veterans could have served anywhere in the world during these periods of service: Gulf War era II (September 2001-present), Gulf War era I (August 1990-August 2001), Vietnam era (August 1964-April 1975), Korean War (July 1950-January 1955), World War II (December 1941-December 1946), and other service periods (all other time periods). Veterans who served in more than one wartime period are classified only in the most recent one. Veterans who served during one of the selected wartime periods and another period are classified only in the wartime period. Updated population controls are introduced annually with the release of January data.

HOUSEHOLD DATA

Table A-6. Employment status of the civilian population by sex, age, and disability status, not seasonally adjusted

[Numbers in thousands]

Employment status, sex, and age	Persons with a disability		Persons with no disability	
	May 2011	May 2012	May 2011	May 2012
TOTAL, 16 years and over				
Civilian noninstitutional population.....	27,669	28,059	211,644	214,907
Civilian labor force.....	5,828	5,821	147,621	149,177
Participation rate.....	21.1	20.7	69.7	69.4
Employed.....	4,917	5,068	135,111	137,658
Employment-population ratio.....	17.8	18.1	63.8	64.1
Unemployed.....	911	752	12,510	11,519
Unemployment rate.....	15.6	12.9	8.5	7.7
Not in labor force.....	21,841	22,238	64,024	65,730
Men, 16 to 64 years				
Civilian labor force.....	2,682	2,586	75,258	75,401
Participation rate.....	35.3	34.9	82.5	82.4
Employed.....	2,218	2,225	68,474	69,344
Employment-population ratio.....	29.2	30.0	75.1	75.8
Unemployed.....	464	362	6,784	6,056
Unemployment rate.....	17.3	14.0	9.0	8.0
Not in labor force.....	4,911	4,819	15,948	16,078
Women, 16 to 64 years				
Civilian labor force.....	2,280	2,282	66,109	66,922
Participation rate.....	29.2	29.1	70.9	70.7
Employed.....	1,919	1,964	60,748	61,894
Employment-population ratio.....	24.6	25.0	65.2	65.4
Unemployed.....	360	318	5,361	5,028
Unemployment rate.....	15.8	13.9	8.1	7.5
Not in labor force.....	5,531	5,564	27,107	27,712
Both sexes, 65 years and over				
Civilian labor force.....	867	953	6,254	6,854
Participation rate.....	7.1	7.4	23.0	23.8
Employed.....	780	880	5,889	6,420
Employment-population ratio.....	6.4	6.9	21.6	22.3
Unemployed.....	87	73	365	435
Unemployment rate.....	10.0	7.6	5.8	6.3
Not in labor force.....	11,399	11,855	20,969	21,939

NOTE: A person with a disability has at least one of the following conditions: is deaf or has serious difficulty hearing; is blind or has serious difficulty seeing even when wearing glasses; has serious difficulty concentrating, remembering, or making decisions because of a physical, mental, or emotional condition; has serious difficulty walking or climbing stairs; has difficulty dressing or bathing; or has difficulty doing errands alone such as visiting a doctor's office or shopping because of a physical, mental, or emotional condition. Updated population controls are introduced annually with the release of January data.

HOUSEHOLD DATA

Table A-7. Employment status of the civilian population by nativity and sex, not seasonally adjusted

[Numbers in thousands]

Employment status and nativity	Total		Men		Women	
	May 2011	May 2012	May 2011	May 2012	May 2011	May 2012
Foreign born, 16 years and over						
Civilian noninstitutional population.....	36,348	37,504	18,200	18,291	18,149	19,213
Civilian labor force.....	24,253	24,878	14,511	14,405	9,741	10,473
Participation rate.....	66.7	66.3	79.7	78.8	53.7	54.5
Employed.....	22,216	23,038	13,333	13,409	8,883	9,629
Employment-population ratio.....	61.1	61.4	73.3	73.3	48.9	50.1
Unemployed.....	2,037	1,840	1,178	996	859	844
Unemployment rate.....	8.4	7.4	8.1	6.9	8.8	8.1
Not in labor force.....	12,095	12,625	3,688	3,886	8,407	8,740
Native born, 16 years and over						
Civilian noninstitutional population.....	202,965	205,462	97,957	98,887	105,008	106,575
Civilian labor force.....	129,196	130,120	67,445	68,004	61,751	62,115
Participation rate.....	63.7	63.3	68.9	68.8	58.8	58.3
Employed.....	117,812	119,689	61,108	62,303	56,704	57,386
Employment-population ratio.....	58.0	58.3	62.4	63.0	54.0	53.8
Unemployed.....	11,384	10,431	6,337	5,701	5,047	4,729
Unemployment rate.....	8.8	8.0	9.4	8.4	8.2	7.6
Not in labor force.....	73,769	75,342	30,512	30,882	43,257	44,460

NOTE: The foreign born are those residing in the United States who were not U.S. citizens at birth. That is, they were born outside the United States or one of its outlying areas such as Puerto Rico or Guam, to parents neither of whom was a U.S. citizen. The native born are persons who were born in the United States or one of its outlying areas such as Puerto Rico or Guam or who were born abroad of at least one parent who was a U.S. citizen. Updated population controls are introduced annually with the release of January data.

HOUSEHOLD DATA

Table A-8. Employed persons by class of worker and part-time status

[In thousands]

Category	Not seasonally adjusted			Seasonally adjusted					
	May 2011	Apr. 2012	May 2012	May 2011	Jan. 2012	Feb. 2012	Mar. 2012	Apr. 2012	May 2012
CLASS OF WORKER									
Agriculture and related industries.....	2,315	2,107	2,371	2,244	2,208	2,185	2,218	2,150	2,274
Wage and salary workers ¹	1,435	1,282	1,482	1,389	1,376	1,353	1,394	1,342	1,423
Self-employed workers, unincorporated.....	850	798	843	827	800	814	811	793	815
Unpaid family workers.....	31	26	46	-	-	-	-	-	-
Nonagricultural industries.....	137,713	139,888	140,356	137,508	139,491	139,945	139,984	139,749	140,037
Wage and salary workers ¹	128,822	131,257	131,493	128,773	130,569	131,365	131,370	131,136	131,322
Government.....	20,690	20,356	20,322	20,348	20,583	20,617	20,338	19,896	20,059
Private industries.....	108,132	110,901	111,172	108,531	109,966	110,778	111,114	111,249	111,421
Private households.....	799	724	834	-	-	-	-	-	-
Other industries.....	107,333	110,176	110,337	107,722	109,353	110,138	110,469	110,527	110,613
Self-employed workers, unincorporated.....	8,812	8,558	8,784	8,648	8,769	8,477	8,514	8,512	8,598
Unpaid family workers.....	79	72	78	-	-	-	-	-	-
PERSONS AT WORK PART TIME²									
All industries									
Part time for economic reasons ³	8,270	7,694	7,837	8,541	8,230	8,119	7,672	7,853	8,098
Slack work or business conditions.....	5,646	4,997	4,961	5,836	5,372	5,446	5,081	5,187	5,147
Could only find part-time work.....	2,396	2,467	2,620	2,475	2,551	2,404	2,341	2,367	2,649
Part time for noneconomic reasons ⁴	18,656	19,443	19,694	18,481	18,636	18,827	18,523	18,832	19,393
Nonagricultural industries									
Part time for economic reasons ³	8,144	7,581	7,736	8,396	8,083	7,988	7,584	7,737	7,982
Slack work or business conditions.....	5,547	4,909	4,901	5,729	5,278	5,356	5,000	5,086	5,078
Could only find part-time work.....	2,382	2,456	2,588	2,452	2,563	2,365	2,295	2,324	2,616
Part time for noneconomic reasons ⁴	18,313	19,097	19,319	18,113	18,298	18,399	18,100	18,418	18,930

1 Includes self-employed workers whose businesses are incorporated.

2 Refers to those who worked 1 to 34 hours during the survey reference week and excludes employed persons who were absent from their jobs for the entire week.

3 Refers to those who worked 1 to 34 hours during the reference week for an economic reason such as slack work or unfavorable business conditions, inability to find full-time work, or seasonal declines in demand.

4 Refers to persons who usually work part time for noneconomic reasons such as childcare problems, family or personal obligations, school or training, retirement or Social Security limits on earnings, and other reasons. This excludes persons who usually work full time but worked only 1 to 34 hours during the reference week for reasons such as vacations, holidays, illness, and bad weather.

- Data not available.

NOTE: Detail for the seasonally adjusted data shown in this table will not necessarily add to totals because of the independent seasonal adjustment of the various series. Updated population controls are introduced annually with the release of January data.

HOUSEHOLD DATA

Table A-9. Selected employment indicators

[Numbers in thousands]

Characteristic	Not seasonally adjusted			Seasonally adjusted					
	May 2011	Apr. 2012	May 2012	May 2011	Jan. 2012	Feb. 2012	Mar. 2012	Apr. 2012	May 2012
AGE AND SEX									
Total, 16 years and over.....	140,028	141,995	142,727	139,808	141,637	142,065	142,034	141,865	142,287
16 to 19 years.....	4,177	4,163	4,320	4,262	4,389	4,371	4,335	4,321	4,388
16 to 17 years.....	1,203	1,304	1,347	1,266	1,333	1,337	1,395	1,421	1,418
18 to 19 years.....	2,974	2,859	2,974	2,979	3,064	3,050	2,955	2,875	2,968
20 years and over.....	135,850	137,832	138,407	135,546	137,248	137,694	137,699	137,544	137,899
20 to 24 years.....	12,868	13,224	13,360	12,966	13,335	13,395	13,371	13,329	13,429
25 years and over.....	122,983	124,608	125,046	122,600	123,901	124,243	124,407	124,166	124,472
25 to 54 years.....	94,088	94,307	94,520	93,892	93,991	94,056	94,267	94,128	94,205
25 to 34 years.....	30,617	30,750	30,748	30,634	30,367	30,483	30,568	30,724	30,714
35 to 44 years.....	30,402	30,640	30,656	30,288	30,614	30,638	30,672	30,539	30,519
45 to 54 years.....	33,069	32,917	33,116	32,970	33,009	32,935	33,027	32,866	32,971
55 years and over.....	28,895	30,300	30,527	28,708	29,910	30,187	30,140	30,038	30,268
Men, 16 years and over.....	74,441	75,074	75,712	74,217	75,288	75,318	75,369	75,256	75,401
16 to 19 years.....	2,013	2,064	2,145	2,055	2,118	2,079	2,083	2,136	2,173
16 to 17 years.....	579	633	628	597	620	650	656	685	655
18 to 19 years.....	1,435	1,431	1,518	1,447	1,487	1,424	1,424	1,461	1,513
20 years and over.....	72,427	73,010	73,567	72,161	73,170	73,240	73,286	73,119	73,229
20 to 24 years.....	6,764	6,778	6,909	6,759	7,003	6,851	6,927	6,863	6,898
25 years and over.....	65,663	66,232	66,658	65,423	66,169	66,376	66,327	66,156	66,308
25 to 54 years.....	50,480	50,290	50,525	50,327	50,358	50,382	50,393	50,329	50,304
25 to 34 years.....	16,698	16,566	16,648	16,745	16,440	16,498	16,538	16,624	16,654
35 to 44 years.....	16,475	16,417	16,500	16,406	16,573	16,564	16,470	16,425	16,421
45 to 54 years.....	17,308	17,308	17,377	17,176	17,346	17,319	17,385	17,280	17,229
55 years and over.....	15,183	15,942	16,133	15,096	15,811	15,994	15,934	15,827	16,004
Women, 16 years and over.....	65,587	66,921	67,015	65,591	66,349	66,747	66,665	66,609	66,886
16 to 19 years.....	2,164	2,099	2,175	2,207	2,270	2,293	2,252	2,184	2,215
16 to 17 years.....	625	671	719	669	713	687	739	736	762
18 to 19 years.....	1,540	1,427	1,456	1,532	1,577	1,625	1,531	1,414	1,454
20 years and over.....	63,423	64,822	64,840	63,385	64,078	64,454	64,413	64,425	64,671
20 to 24 years.....	6,104	6,446	6,451	6,207	6,332	6,544	6,444	6,467	6,531
25 years and over.....	57,320	58,376	58,389	57,177	57,732	57,867	58,079	58,010	58,165
25 to 54 years.....	43,608	44,017	43,995	43,565	43,633	43,674	43,873	43,800	43,901
25 to 34 years.....	13,920	14,185	14,101	13,889	13,928	13,985	14,030	14,099	14,060
35 to 44 years.....	13,927	14,223	14,156	13,882	14,041	14,074	14,202	14,114	14,098
45 to 54 years.....	15,761	15,609	15,738	15,794	15,664	15,615	15,642	15,586	15,742
55 years and over.....	13,712	14,359	14,394	13,612	14,099	14,193	14,206	14,211	14,264
MARITAL STATUS									
Married men, spouse present.....	43,124	43,530	43,903	43,043	43,658	43,556	43,635	43,582	43,798
Married women, spouse present.....	33,894	34,369	34,673	33,847	34,445	34,341	34,325	34,207	34,620
Women who maintain families.....	8,930	9,530	9,516	-	-	-	-	-	-
FULL- OR PART-TIME STATUS									
Full-time workers ¹	112,618	113,999	114,634	112,294	113,845	114,408	115,290	114,478	114,212
Part-time workers ²	27,410	27,996	28,092	27,460	27,739	27,576	26,912	27,420	28,038
MULTIPLE JOBHOLDERS									
Total multiple jobholders.....	7,084	6,947	7,174	6,924	7,038	6,999	6,985	6,870	6,959
Percent of total employed.....	5.1	4.9	5.0	5.0	5.0	4.9	4.9	4.8	4.9
SELF-EMPLOYMENT									
Self-employed workers, incorporated.....	5,232	5,258	5,419	-	-	-	-	-	-
Self-employed workers, unincorporated.....	9,661	9,357	9,627	9,475	9,569	9,291	9,325	9,305	9,413

1 Employed full-time workers are persons who usually work 35 hours or more per week.

2 Employed part-time workers are persons who usually work less than 35 hours per week.

- Data not available.

NOTE: Detail for the seasonally adjusted data shown in this table will not necessarily add to totals because of the independent seasonal adjustment of the various series. Updated population controls are introduced annually with the release of January data.

HOUSEHOLD DATA

Table A-10. Selected unemployment indicators, seasonally adjusted

Characteristic	Number of unemployed persons (in thousands)			Unemployment rates					
	May 2011	Apr. 2012	May 2012	May 2011	Jan. 2012	Feb. 2012	Mar. 2012	Apr. 2012	May 2012
AGE AND SEX									
Total, 16 years and over.....	13,892	12,500	12,720	9.0	8.3	8.3	8.2	8.1	8.2
16 to 19 years.....	1,356	1,432	1,431	24.1	23.2	23.8	25.0	24.9	24.6
16 to 17 years.....	515	509	512	28.9	28.8	29.9	28.8	26.4	26.5
18 to 19 years.....	841	935	914	22.0	20.5	20.8	22.9	24.5	23.5
20 years and over.....	12,536	11,068	11,289	8.5	7.7	7.7	7.5	7.4	7.6
20 to 24 years.....	2,225	2,029	1,989	14.6	13.3	13.8	13.2	13.2	12.9
25 years and over.....	10,310	9,034	9,297	7.8	7.0	7.0	6.8	6.8	6.9
25 to 54 years.....	8,231	7,017	7,196	8.1	7.4	7.3	7.1	6.9	7.1
25 to 34 years.....	3,150	2,711	2,727	9.3	9.0	8.7	8.6	8.1	8.2
35 to 44 years.....	2,506	2,139	2,231	7.6	6.8	6.8	6.4	6.5	6.8
45 to 54 years.....	2,575	2,167	2,238	7.2	6.4	6.4	6.2	6.2	6.4
55 years and over.....	2,077	2,026	2,096	6.7	5.9	5.9	6.2	6.3	6.5
Men, 16 years and over.....	7,802	6,727	6,949	9.5	8.3	8.3	8.3	8.2	8.4
16 to 19 years.....	759	797	796	27.0	25.3	27.0	26.7	27.2	26.8
16 to 17 years.....	268	279	267	31.0	32.0	33.5	30.1	28.9	28.9
18 to 19 years.....	489	521	523	25.3	22.3	23.9	25.1	26.3	25.7
20 years and over.....	7,043	5,930	6,153	8.9	7.7	7.7	7.6	7.5	7.8
20 to 24 years.....	1,258	1,124	1,130	15.7	14.2	15.6	14.1	14.1	14.1
25 years and over.....	5,757	4,781	5,006	8.1	6.9	6.7	6.8	6.7	7.0
25 to 54 years.....	4,621	3,720	3,808	8.4	7.2	7.1	7.0	6.9	7.0
25 to 34 years.....	1,807	1,459	1,435	9.7	9.0	8.6	8.6	8.1	7.9
35 to 44 years.....	1,340	1,129	1,166	7.6	6.4	6.4	6.5	6.4	6.6
45 to 54 years.....	1,473	1,132	1,207	7.9	6.2	6.2	6.0	6.1	6.5
55 years and over.....	1,136	1,062	1,197	7.0	5.9	5.7	6.3	6.3	7.0
Women, 16 years and over.....	6,090	5,773	5,771	8.5	8.3	8.2	8.1	8.0	7.9
16 to 19 years.....	597	635	635	21.3	21.1	20.7	23.4	22.5	22.3
16 to 17 years.....	247	230	246	27.0	25.8	26.1	27.6	23.8	24.4
18 to 19 years.....	352	414	390	18.7	18.6	17.8	20.7	22.7	21.2
20 years and over.....	5,493	5,137	5,136	8.0	7.7	7.7	7.4	7.4	7.4
20 to 24 years.....	967	905	859	13.5	12.3	11.7	12.2	12.3	11.6
25 years and over.....	4,553	4,253	4,291	7.4	7.2	7.2	6.8	6.8	6.9
25 to 54 years.....	3,610	3,297	3,388	7.7	7.6	7.6	7.2	7.0	7.2
25 to 34 years.....	1,343	1,252	1,292	8.8	9.0	8.8	8.6	8.2	8.4
35 to 44 years.....	1,165	1,010	1,065	7.7	7.4	7.3	6.4	6.7	7.0
45 to 54 years.....	1,102	1,035	1,031	6.5	6.6	6.6	6.5	6.2	6.1
55 years and over ¹	876	878	847	6.0	5.9	6.1	5.9	5.8	5.6
MARITAL STATUS									
Married men, spouse present.....	2,726	2,370	2,440	6.0	5.1	5.0	5.1	5.2	5.3
Married women, spouse present.....	2,067	1,919	1,799	5.8	5.6	5.5	5.3	5.3	4.9
Women who maintain families ¹	1,303	1,078	1,168	12.7	12.0	11.7	10.8	10.2	10.9
FULL- OR PART-TIME STATUS									
Full-time workers ²	12,059	10,691	10,858	9.7	8.8	8.8	8.6	8.5	8.7
Part-time workers ³	1,830	1,846	1,826	6.2	5.9	6.0	6.2	6.3	6.1

1 Not seasonally adjusted.

2 Full-time workers are unemployed persons who have expressed a desire to work full time (35 hours or more per week) or are on layoff from full-time jobs.

3 Part-time workers are unemployed persons who have expressed a desire to work part time (less than 35 hours per week) or are on layoff from part-time jobs.

NOTE: Detail for the seasonally adjusted data shown in this table will not necessarily add to totals because of the independent seasonal adjustment of the various series. Updated population controls are introduced annually with the release of January data.

HOUSEHOLD DATA

Table A-11. Unemployed persons by reason for unemployment

[Numbers in thousands]

Reason	Not seasonally adjusted			Seasonally adjusted					
	May 2011	Apr. 2012	May 2012	May 2011	Jan. 2012	Feb. 2012	Mar. 2012	Apr. 2012	May 2012
NUMBER OF UNEMPLOYED									
Job losers and persons who completed temporary jobs.....	7,885	6,555	6,607	8,250	7,321	7,209	7,020	6,852	6,989
On temporary layoff.....	1,004	1,009	909	1,218	1,284	1,135	1,120	1,083	1,106
Not on temporary layoff.....	6,881	5,546	5,699	7,031	6,037	6,075	5,900	5,768	5,883
Permanent job losers.....	5,566	4,397	4,458	5,621	4,807	4,755	4,632	4,529	4,553
Persons who completed temporary jobs.....	1,315	1,149	1,240	1,410	1,230	1,320	1,268	1,239	1,330
Job leavers.....	869	962	849	919	939	1,031	1,117	997	891
Reentrants.....	3,477	3,184	3,513	3,436	3,325	3,361	3,269	3,341	3,439
New entrants.....	1,190	1,210	1,302	1,229	1,253	1,392	1,433	1,384	1,367
PERCENT DISTRIBUTION									
Job losers and persons who completed temporary jobs.....	58.8	55.0	53.8	59.6	57.0	55.5	54.7	54.5	55.1
On temporary layoff.....	7.5	8.5	7.4	8.8	10.0	8.7	8.7	8.6	8.7
Not on temporary layoff.....	51.3	46.6	46.4	50.8	47.0	46.7	46.0	45.9	46.4
Job leavers.....	6.5	8.1	6.9	6.6	7.3	7.9	8.7	7.9	7.0
Reentrants.....	25.9	26.7	28.6	24.8	25.9	25.9	25.5	26.6	27.1
New entrants.....	8.9	10.2	10.6	8.9	9.8	10.7	11.2	11.0	10.8
UNEMPLOYED AS A PERCENT OF THE CIVILIAN LABOR FORCE									
Job losers and persons who completed temporary jobs.....	5.1	4.3	4.3	5.4	4.7	4.7	4.5	4.4	4.5
Job leavers.....	0.6	0.6	0.5	0.6	0.6	0.7	0.7	0.6	0.6
Reentrants.....	2.3	2.1	2.3	2.2	2.2	2.2	2.1	2.2	2.2
New entrants.....	0.8	0.8	0.8	0.8	0.8	0.9	0.9	0.9	0.9

NOTE: Updated population controls are introduced annually with the release of January data.

HOUSEHOLD DATA

Table A-12. Unemployed persons by duration of unemployment

[Numbers in thousands]

Duration	Not seasonally adjusted			Seasonally adjusted					
	May 2011	Apr. 2012	May 2012	May 2011	Jan. 2012	Feb. 2012	Mar. 2012	Apr. 2012	May 2012
NUMBER OF UNEMPLOYED									
Less than 5 weeks.....	2,664	2,165	2,572	2,687	2,486	2,541	2,572	2,543	2,580
5 to 14 weeks.....	2,356	2,368	2,442	2,912	2,884	2,807	2,754	2,814	3,002
15 weeks and over.....	8,401	7,377	7,257	8,197	7,498	7,397	7,175	6,984	7,073
15 to 26 weeks.....	2,235	2,109	1,852	1,994	1,980	1,971	1,867	1,884	1,662
27 weeks and over.....	6,166	5,268	5,405	6,204	5,518	5,426	5,308	5,101	5,411
Average (mean) duration, in weeks ¹	41.2	42.0	41.4	39.6	40.1	40.0	39.4	39.1	39.7
Median duration, in weeks.....	23.8	22.3	22.0	21.9	21.1	20.3	19.9	19.4	20.1
PERCENT DISTRIBUTION									
Less than 5 weeks.....	19.8	18.2	21.0	19.5	19.3	19.9	20.6	20.6	20.4
5 to 14 weeks.....	17.6	19.9	19.9	21.1	22.4	22.0	22.0	22.8	23.7
15 weeks and over.....	62.6	61.9	59.1	59.4	58.3	58.0	57.4	56.6	55.9
15 to 26 weeks.....	16.7	17.7	15.1	14.5	15.4	15.5	14.9	15.3	13.1
27 weeks and over.....	45.9	44.2	44.0	45.0	42.9	42.6	42.5	41.3	42.8

¹ Beginning in January 2011, this series reflects a change to the collection of data on unemployment duration. For more information, see www.bls.gov/cps/duration.htm.

NOTE: Updated population controls are introduced annually with the release of January data.

HOUSEHOLD DATA

Table A-13. Employed and unemployed persons by occupation, not seasonally adjusted

[Numbers in thousands]

Occupation	Employed		Unemployed		Unemployment rates	
	May 2011	May 2012	May 2011	May 2012	May 2011	May 2012
Total, 16 years and over ¹	140,028	142,727	13,421	12,271	8.7	7.9
Management, professional, and related occupations.....	52,778	54,156	2,419	2,275	4.4	4.0
Management, business, and financial operations occupations.....	21,355	22,691	1,094	966	4.9	4.1
Professional and related occupations.....	31,423	31,465	1,325	1,309	4.0	4.0
Service occupations.....	24,959	25,870	2,607	2,482	9.5	8.8
Sales and office occupations.....	32,804	32,684	3,172	2,782	8.8	7.8
Sales and related occupations.....	15,376	15,179	1,596	1,308	9.4	7.9
Office and administrative support occupations.....	17,428	17,504	1,576	1,474	8.3	7.8
Natural resources, construction, and maintenance occupations.....	12,942	12,908	1,900	1,609	12.8	11.1
Farming, fishing, and forestry occupations.....	1,033	1,114	117	133	10.2	10.7
Construction and extraction occupations.....	7,071	6,971	1,375	1,153	16.3	14.2
Installation, maintenance, and repair occupations.....	4,838	4,823	408	323	7.8	6.3
Production, transportation, and material moving occupations.....	16,546	17,109	2,100	1,784	11.3	9.4
Production occupations.....	8,113	8,433	1,094	814	11.9	8.8
Transportation and material moving occupations.....	8,433	8,676	1,006	970	10.7	10.1

¹ Persons with no previous work experience and persons whose last job was in the U.S. Armed Forces are included in the unemployed total.

NOTE: Updated population controls are introduced annually with the release of January data.

HOUSEHOLD DATA

Table A-14. Unemployed persons by industry and class of worker, not seasonally adjusted

Industry and class of worker	Number of unemployed persons (in thousands)		Unemployment rates	
	May 2011	May 2012	May 2011	May 2012
Total, 16 years and over ¹	13,421	12,271	8.7	7.9
Nonagricultural private wage and salary workers.....	10,628	9,419	8.9	7.8
Mining, quarrying, and oil and gas extraction.....	32	47	3.8	4.5
Construction.....	1,367	1,150	16.3	14.2
Manufacturing.....	1,453	1,099	9.6	7.1
Durable goods.....	920	683	9.6	7.2
Nondurable goods.....	533	416	9.6	7.1
Wholesale and retail trade.....	1,845	1,654	9.0	8.1
Transportation and utilities.....	483	480	8.0	7.8
Information.....	227	230	7.3	7.8
Financial activities.....	612	462	6.8	5.1
Professional and business services.....	1,429	1,296	9.8	8.5
Education and health services.....	1,242	1,172	5.7	5.3
Leisure and hospitality.....	1,402	1,326	10.6	9.7
Other services.....	536	501	8.4	7.8
Agriculture and related private wage and salary workers.....	131	148	8.7	9.5
Government workers.....	836	899	3.9	4.2
Self-employed workers, unincorporated, and unpaid family workers.....	636	503	6.1	4.9

¹ Persons with no previous work experience and persons whose last job was in the U.S. Armed Forces are included in the unemployed total.

NOTE: Updated population controls are introduced annually with the release of January data.

HOUSEHOLD DATA

Table A-15. Alternative measures of labor underutilization

[Percent]

Measure	Not seasonally adjusted			Seasonally adjusted					
	May 2011	Apr. 2012	May 2012	May 2011	Jan. 2012	Feb. 2012	Mar. 2012	Apr. 2012	May 2012
U-1 Persons unemployed 15 weeks or longer, as a percent of the civilian labor force.....	5.5	4.8	4.7	5.3	4.9	4.8	4.6	4.5	4.6
U-2 Job losers and persons who completed temporary jobs, as a percent of the civilian labor force.....	5.1	4.3	4.3	5.4	4.7	4.7	4.5	4.4	4.5
U-3 Total unemployed, as a percent of the civilian labor force (official unemployment rate).....	8.7	7.7	7.9	9.0	8.3	8.3	8.2	8.1	8.2
U-4 Total unemployed plus discouraged workers, as a percent of the civilian labor force plus discouraged workers.....	9.2	8.3	8.4	9.5	8.9	8.9	8.7	8.7	8.7
U-5 Total unemployed, plus discouraged workers, plus all other persons marginally attached to the labor force, as a percent of the civilian labor force plus all persons marginally attached to the labor force.....	10.0	9.1	9.3	10.3	9.9	9.8	9.6	9.5	9.6
U-6 Total unemployed, plus all persons marginally attached to the labor force, plus total employed part time for economic reasons, as a percent of the civilian labor force plus all persons marginally attached to the labor force.....	15.4	14.1	14.3	15.8	15.1	14.9	14.5	14.5	14.8

NOTE: Persons marginally attached to the labor force are those who currently are neither working nor looking for work but indicate that they want and are available for a job and have looked for work sometime in the past 12 months. Discouraged workers, a subset of the marginally attached, have given a job-market related reason for not currently looking for work. Persons employed part time for economic reasons are those who want and are available for full-time work but have had to settle for a part-time schedule. Updated population controls are introduced annually with the release of January data.

HOUSEHOLD DATA

Table A-16. Persons not in the labor force and multiple jobholders by sex, not seasonally adjusted

[Numbers in thousands]

Category	Total		Men		Women	
	May 2011	May 2012	May 2011	May 2012	May 2011	May 2012
NOT IN THE LABOR FORCE						
Total not in the labor force.....	85,864	87,968	34,200	34,768	51,664	53,200
Persons who currently want a job.....	6,821	6,835	3,337	3,214	3,484	3,622
Marginally attached to the labor force ¹	2,206	2,423	1,158	1,239	1,047	1,183
Discouraged workers ²	822	830	469	469	353	360
Other persons marginally attached to the labor force ³	1,384	1,593	689	770	695	823
MULTIPLE JOBHOLDERS						
Total multiple jobholders ⁴	7,084	7,174	3,491	3,605	3,593	3,569
Percent of total employed.....	5.1	5.0	4.7	4.8	5.5	5.3
Primary job full time, secondary job part time.....	3,731	3,655	1,987	2,111	1,744	1,544
Primary and secondary jobs both part time.....	1,883	1,979	670	639	1,214	1,340
Primary and secondary jobs both full time.....	295	250	185	170	111	80
Hours vary on primary or secondary job.....	1,130	1,245	629	656	501	589

1 Data refer to persons who want a job, have searched for work during the prior 12 months, and were available to take a job during the reference week, but had not looked for work in the past 4 weeks.

2 Includes those who did not actively look for work in the prior 4 weeks for reasons such as thinks no work available, could not find work, lacks schooling or training, employer thinks too young or old, and other types of discrimination.

3 Includes those who did not actively look for work in the prior 4 weeks for such reasons as school or family responsibilities, ill health, and transportation problems, as well as a number for whom reason for nonparticipation was not determined.

4 Includes a small number of persons who work part time on their primary job and full time on their secondary job(s), not shown separately.

NOTE: Updated population controls are introduced annually with the release of January data.

ESTABLISHMENT DATA

Table B-1. Employees on nonfarm payrolls by industry sector and selected industry detail

[In thousands]

Industry	Not seasonally adjusted				Seasonally adjusted				Change from: Apr.2012 - May2012 ^P
	May 2011	Mar. 2012	Apr. 2012 ^P	May 2012 ^P	May 2011	Mar. 2012	Apr. 2012 ^P	May 2012 ^P	
Total nonfarm.....	131,889	132,081	132,938	133,727	131,227	132,863	132,940	133,009	69
Total private.....	109,354	109,676	110,537	111,337	109,097	110,871	110,958	111,040	82
Goods-producing.....	18,007	17,890	18,090	18,327	18,001	18,318	18,322	18,307	-15
Mining and logging.....	774	823	827	835	777	837	837	838	1
Logging.....	46.4	46.2	44.4	46.6	48.2	48.3	47.8	48.3	0.5
Mining.....	727.4	776.3	782.6	788.7	728.3	788.8	789.1	789.8	0.7
Oil and gas extraction.....	171.3	191.1	191.7	193.1	171.4	192.3	193.1	193.0	-0.1
Mining, except oil and gas ¹	220.3	211.9	216.4	223.5	217.8	220.5	220.2	221.1	0.9
Coal mining.....	87.1	85.6	84.9	85.4	87.2	85.9	85.3	85.6	0.3
Support activities for mining.....	335.8	373.3	374.5	372.1	339.1	376.0	375.8	375.7	-0.1
Construction.....	5,540	5,220	5,391	5,560	5,498	5,549	5,544	5,516	-28
Construction of buildings.....	1,206.7	1,172.0	1,188.3	1,223.6	1,211.4	1,228.4	1,226.3	1,226.8	0.5
Residential building.....	558.1	538.5	545.8	563.4	559.8	568.0	566.3	565.3	-1.0
Nonresidential building.....	648.6	633.5	642.5	660.2	651.6	660.4	660.0	661.5	1.5
Heavy and civil engineering construction.....	854.9	760.8	817.3	854.2	831.6	839.2	841.8	830.6	-11.2
Specialty trade contractors.....	3,478.8	3,286.9	3,385.8	3,482.3	3,455.4	3,481.8	3,475.9	3,458.2	-17.7
Residential specialty trade contractors.....	1,472.5	1,372.2	1,424.2	1,470.6	1,454.3	1,460.1	1,462.5	1,452.5	-10.0
Nonresidential specialty trade contractors.....	2,006.3	1,914.7	1,961.6	2,011.7	2,001.1	2,021.7	2,013.4	2,005.7	-7.7
Manufacturing.....	11,693	11,847	11,872	11,932	11,726	11,932	11,941	11,953	12
Durable goods.....	7,253	7,420	7,439	7,475	7,264	7,455	7,466	7,479	13
Wood products.....	338.8	326.3	329.2	332.0	337.3	333.4	331.8	330.4	-1.4
Nonmetallic mineral products.....	371.3	358.3	364.3	369.4	367.8	370.1	368.7	365.7	-3.0
Primary metals.....	388.4	404.0	405.8	409.5	389.1	405.6	406.4	410.2	3.8
Fabricated metal products.....	1,339.4	1,383.7	1,398.8	1,398.8	1,345.2	1,390.5	1,396.1	1,401.8	5.7
Machinery.....	1,048.1	1,096.7	1,098.9	1,102.3	1,051.8	1,098.1	1,101.8	1,104.3	2.5
Computer and electronic products ¹	1,102.9	1,108.3	1,105.4	1,108.1	1,106.3	1,110.3	1,109.0	1,110.7	1.7
Computer and peripheral equipment.....	157.1	163.3	164.0	164.1	157.6	163.4	164.3	164.3	0.0
Communications equipment.....	115.8	110.2	109.1	109.2	116.1	110.7	109.7	109.5	-0.2
Semiconductors and electronic components.....	381.4	387.3	386.2	387.4	383.2	387.6	387.0	389.0	2.0
Electronic instruments.....	403.7	402.4	401.4	402.5	404.3	403.2	402.9	402.9	0.0
Electrical equipment and appliances.....	365.2	372.6	370.6	373.4	366.5	374.7	373.0	374.2	1.2
Transportation equipment ¹	1,371.2	1,447.7	1,448.5	1,450.9	1,372.6	1,443.6	1,448.0	1,452.1	4.1
Motor vehicles and parts ²	711.8	767.1	766.2	771.0	710.7	762.3	764.2	770.0	5.8
Furniture and related products.....	355.8	347.9	351.2	352.6	354.4	351.4	352.7	350.6	-2.1
Miscellaneous manufacturing.....	571.4	574.6	575.7	577.7	573.4	577.4	578.3	579.1	0.8
Nondurable goods.....	4,440	4,427	4,433	4,457	4,462	4,477	4,475	4,474	-1
Food manufacturing.....	1,441.1	1,425.8	1,428.0	1,441.2	1,460.7	1,454.8	1,457.3	1,458.5	1.2
Beverages and tobacco products.....	185.7	189.8	191.9	199.0	186.9	196.8	197.0	199.7	2.7
Textile mills.....	121.9	120.0	119.9	119.7	121.1	120.1	119.7	119.0	-0.7
Textile product mills.....	118.2	113.1	114.2	114.8	118.0	114.0	114.1	114.0	-0.1
Apparel.....	152.7	149.7	150.6	150.3	152.7	150.4	150.3	149.8	-0.5
Leather and allied products.....	28.8	30.1	30.2	29.7	28.9	30.1	30.2	29.8	-0.4
Paper and paper products.....	388.2	392.0	390.2	390.7	389.5	394.3	392.6	391.8	-0.8
Printing and related support activities.....	471.0	454.4	455.6	456.9	471.5	456.3	457.5	457.1	-0.4
Petroleum and coal products.....	113.5	111.0	113.9	115.2	112.3	114.5	114.6	114.1	-0.5
Chemicals.....	783.4	798.4	795.4	794.7	785.0	799.9	797.3	796.1	-1.2
Plastics and rubber products.....	635.3	642.7	642.8	645.0	635.2	645.5	644.7	643.9	-0.8
Private service-providing.....	91,347	91,786	92,447	93,010	91,096	92,553	92,636	92,733	97
Trade, transportation, and utilities.....	24,941	24,937	25,054	25,270	24,993	25,243	25,264	25,318	54
Wholesale trade.....	5,533.3	5,562.7	5,588.7	5,632.6	5,525.2	5,595.6	5,606.7	5,622.6	15.9
Durable goods.....	2,753.8	2,767.2	2,770.4	2,789.0	2,754.0	2,780.8	2,781.4	2,788.8	7.4
Nondurable goods.....	1,945.1	1,947.0	1,965.4	1,984.2	1,937.3	1,962.7	1,969.7	1,975.5	5.8
Electronic markets and agents and brokers.....	834.4	848.5	852.9	859.4	833.9	852.1	855.6	858.3	2.7
Retail trade.....	14,569.4	14,495.5	14,590.4	14,696.5	14,626.1	14,726.3	14,753.3	14,755.6	2.3
Motor vehicle and parts dealers ¹	1,691.7	1,704.6	1,718.2	1,722.4	1,684.0	1,719.1	1,717.2	1,715.8	-1.4
Automobile dealers.....	1,053.7	1,074.9	1,080.1	1,083.7	1,053.0	1,080.1	1,081.1	1,083.5	2.4
Furniture and home furnishings stores.....	433.7	442.7	441.3	444.1	441.0	449.7	449.1	451.8	2.7

See footnotes at end of table.

ESTABLISHMENT DATA

Table B-1. Employees on nonfarm payrolls by industry sector and selected industry detail

— Continued

[In thousands]

Industry	Not seasonally adjusted				Seasonally adjusted				Change from: Apr.2012 - May2012 ^P
	May 2011	Mar. 2012	Apr. 2012 ^P	May 2012 ^P	May 2011	Mar. 2012	Apr. 2012 ^P	May 2012 ^P	
Retail trade - Continued									
Electronics and appliance stores.....	523.1	504.1	503.1	495.8	531.7	509.1	509.3	504.6	-4.7
Building material and garden supply stores...	1,210.7	1,150.7	1,205.1	1,220.6	1,145.3	1,154.7	1,158.1	1,149.8	-8.3
Food and beverage stores.....	2,823.8	2,834.0	2,835.8	2,867.6	2,824.6	2,863.0	2,861.7	2,867.8	6.1
Health and personal care stores.....	976.6	987.8	988.3	992.0	978.1	994.7	996.3	993.5	-2.8
Gasoline stations.....	831.9	817.6	824.8	833.7	829.2	829.9	830.6	830.4	-0.2
Clothing and clothing accessories stores.....	1,308.3	1,314.8	1,321.3	1,328.9	1,348.3	1,365.7	1,365.1	1,371.8	6.7
Sporting goods, hobby, book, and music stores.....	559.3	548.6	551.0	558.6	577.5	566.9	570.3	573.9	3.6
General merchandise stores ¹	3,020.8	3,015.4	3,021.4	3,028.2	3,067.3	3,067.8	3,087.5	3,083.4	-4.1
Department stores.....	1,497.0	1,503.3	1,498.0	1,494.2	1,538.7	1,541.5	1,546.7	1,542.5	-4.2
Miscellaneous store retailers.....	769.2	749.0	757.9	779.5	767.2	768.9	771.5	775.8	4.3
Nonstore retailers.....	420.3	426.2	422.2	425.1	431.9	436.8	436.6	437.0	0.4
Transportation and warehousing.....	4,283.4	4,318.3	4,314.3	4,378.7	4,287.0	4,359.3	4,342.8	4,378.4	35.6
Air transportation.....	456.4	456.5	456.9	458.1	456.2	457.5	458.6	457.7	-0.9
Rail transportation.....	228.1	232.5	233.7	234.1	228.9	233.5	233.9	234.4	0.5
Water transportation.....	62.5	65.7	65.2	66.3	62.5	67.5	66.3	66.1	-0.2
Truck transportation.....	1,293.4	1,307.9	1,317.7	1,339.3	1,298.7	1,333.3	1,336.0	1,343.3	7.3
Transit and ground passenger transportation.....	454.8	444.3	430.4	455.4	436.8	431.6	417.3	437.4	20.1
Pipeline transportation.....	42.8	43.7	43.6	43.8	42.9	43.8	43.9	43.9	0.0
Scenic and sightseeing transportation.....	31.5	26.2	29.2	33.8	29.3	32.8	32.5	31.6	-0.9
Support activities for transportation.....	560.2	578.3	580.9	583.6	561.7	582.1	581.7	584.9	3.2
Couriers and messengers.....	515.3	519.2	510.7	516.7	525.5	528.3	520.9	526.0	5.1
Warehousing and storage.....	638.4	644.0	646.0	647.6	644.5	648.9	651.7	653.1	1.4
Utilities.....	555.1	560.8	560.9	561.9	554.7	561.8	561.2	561.2	0.0
Information.....	2,676	2,625	2,627	2,634	2,671	2,631	2,630	2,628	-2
Publishing industries, except Internet.....	745.8	739.0	738.0	736.0	749.1	740.9	740.3	739.7	-0.6
Motion picture and sound recording industries.....	371.8	356.3	365.4	375.7	361.7	360.2	364.9	364.9	0.0
Broadcasting, except Internet.....	279.7	281.8	281.7	280.8	281.9	282.2	282.0	282.2	0.2
Telecommunications.....	876.2	838.9	833.5	832.2	878.2	838.6	835.5	833.5	-2.0
Data processing, hosting and related services.....	246.3	242.5	242.6	242.3	244.2	241.7	240.9	240.6	-0.3
Other information services.....	156.3	166.6	165.6	166.5	156.2	167.6	166.4	166.6	0.2
Financial activities.....	7,684	7,681	7,695	7,721	7,693	7,717	7,721	7,724	3
Finance and insurance.....	5,749.2	5,762.4	5,757.1	5,755.6	5,758.4	5,763.6	5,765.4	5,761.6	-3.8
Monetary authorities - central bank.....	18.7	18.8	18.9	17.8	18.7	18.7	18.7	17.9	-0.8
Credit intermediation and related activities ¹	2,558.7	2,585.3	2,578.0	2,575.4	2,564.2	2,582.9	2,579.7	2,577.6	-2.1
Depository credit intermediation ¹	1,738.4	1,752.0	1,747.5	1,743.5	1,741.7	1,752.6	1,748.7	1,745.2	-3.5
Commercial banking.....	1,316.3	1,325.4	1,320.2	1,316.2	1,319.8	1,325.5	1,321.8	1,319.5	-2.3
Securities, commodity contracts, investments.....	804.5	800.2	797.5	796.7	806.8	800.6	799.5	799.0	-0.5
Insurance carriers and related activities.....	2,282.0	2,273.5	2,278.4	2,281.1	2,283.0	2,276.7	2,282.6	2,282.3	-0.3
Funds, trusts, and other financial vehicles.....	85.3	84.6	84.3	84.6	85.7	84.7	84.9	84.8	-0.1
Real estate and rental and leasing.....	1,934.7	1,918.4	1,938.3	1,964.9	1,934.8	1,953.5	1,955.9	1,962.5	6.6
Real estate.....	1,408.9	1,394.9	1,410.0	1,422.1	1,409.7	1,417.1	1,418.5	1,421.2	2.7
Rental and leasing services.....	501.8	500.0	504.9	519.4	501.0	512.7	513.9	517.8	3.9
Lessors of nonfinancial intangible assets.....	24.0	23.5	23.4	23.4	24.1	23.7	23.5	23.5	0.0
Professional and business services.....	17,291	17,599	17,793	17,808	17,298	17,779	17,816	17,815	-1
Professional and technical services ¹	7,612.4	7,964.0	7,987.9	7,834.6	7,684.6	7,892.9	7,911.7	7,907.7	-4.0
Legal services.....	1,111.5	1,110.6	1,114.4	1,116.5	1,115.1	1,115.8	1,119.3	1,119.9	0.6
Accounting and bookkeeping services.....	876.5	1,091.6	1,071.6	894.0	931.5	969.5	965.1	951.1	-14.0
Architectural and engineering services.....	1,288.4	1,299.4	1,312.5	1,321.1	1,291.6	1,317.1	1,323.4	1,323.7	0.3
Computer systems design and related services.....	1,519.4	1,569.1	1,579.5	1,582.1	1,523.9	1,576.5	1,581.1	1,586.4	5.3
Management and technical consulting services.....	1,061.3	1,109.9	1,118.9	1,122.0	1,066.0	1,119.3	1,124.4	1,126.6	2.2
Management of companies and enterprises.....	1,911.9	1,933.6	1,932.6	1,940.8	1,914.9	1,939.6	1,941.7	1,943.7	2.0
Administrative and waste services.....	7,766.2	7,701.3	7,872.5	8,032.3	7,698.4	7,946.8	7,962.9	7,963.7	0.8

See footnotes at end of table.

ESTABLISHMENT DATA

Table B-1. Employees on nonfarm payrolls by industry sector and selected industry detail

— Continued

[In thousands]

Industry	Not seasonally adjusted				Seasonally adjusted				Change from: Apr.2012 - May2012 ^p
	May 2011	Mar. 2012	Apr. 2012 ^p	May 2012 ^p	May 2011	Mar. 2012	Apr. 2012 ^p	May 2012 ^p	
Administrative and waste services - Continued									
Administrative and support services ¹	7,402.2	7,338.1	7,504.6	7,661.7	7,334.2	7,575.5	7,591.3	7,592.8	1.5
Employment services ¹	2,932.8	3,031.2	3,070.5	3,151.6	2,930.5	3,129.3	3,142.7	3,148.8	6.1
Temporary help services	2,300.2	2,383.8	2,420.5	2,493.5	2,295.9	2,469.1	2,481.7	2,490.9	9.2
Business support services	802.9	816.0	809.1	807.3	811.0	813.5	813.3	815.8	2.5
Services to buildings and dwellings	1,849.7	1,673.6	1,797.0	1,858.2	1,775.8	1,799.8	1,799.1	1,784.8	-14.3
Waste management and remediation services	364.0	363.2	367.9	370.6	364.2	371.3	371.6	370.9	-0.7
Education and health services	19,880	20,379	20,418	20,372	19,823	20,232	20,261	20,307	46
Educational services	3,267.1	3,475.6	3,483.5	3,384.2	3,226.1	3,318.7	3,327.1	3,339.0	11.9
Health care and social assistance	16,612.8	16,903.4	16,934.7	16,987.9	16,596.7	16,913.4	16,934.3	16,968.3	34.0
Health care ³	13,984.3	14,259.8	14,287.4	14,328.4	14,003.6	14,289.0	14,310.9	14,343.7	32.8
Ambulatory health care services ¹	6,109.3	6,274.5	6,303.6	6,332.1	6,115.2	6,290.2	6,311.9	6,334.7	22.8
Offices of physicians	2,336.1	2,405.8	2,407.9	2,421.0	2,342.6	2,410.7	2,416.7	2,426.6	9.9
Outpatient care centers	620.7	649.9	652.2	656.3	620.9	649.7	651.2	655.8	4.6
Home health care services	1,130.4	1,169.5	1,185.2	1,194.1	1,130.2	1,172.8	1,184.0	1,190.9	6.9
Hospitals	4,711.5	4,802.7	4,798.5	4,804.5	4,721.3	4,808.1	4,809.7	4,814.2	4.5
Nursing and residential care facilities ¹	3,163.5	3,182.6	3,185.3	3,191.8	3,167.1	3,190.7	3,189.3	3,194.8	5.5
Nursing care facilities	1,667.5	1,660.2	1,658.0	1,658.6	1,668.9	1,664.8	1,660.9	1,660.5	-0.4
Social assistance ¹	2,628.5	2,643.6	2,647.3	2,659.5	2,593.1	2,624.4	2,623.4	2,624.6	1.2
Child day care services	872.4	856.4	859.4	866.0	847.5	838.3	837.8	839.9	2.1
Leisure and hospitality	13,517	13,230	13,507	13,819	13,280	13,591	13,585	13,576	-9
Arts, entertainment, and recreation	1,972.5	1,797.9	1,879.6	1,975.5	1,899.3	1,942.6	1,924.0	1,905.3	-18.7
Performing arts and spectator sports	406.6	388.3	413.4	428.7	386.6	409.6	407.8	407.7	-0.1
Museums, historical sites, and similar institutions	136.1	127.6	131.5	136.3	130.7	135.4	133.6	131.6	-2.0
Amusements, gambling, and recreation	1,429.8	1,282.0	1,334.7	1,410.5	1,382.0	1,397.6	1,382.6	1,366.0	-16.6
Accommodation and food services	11,544.5	11,431.6	11,627.1	11,843.4	11,380.2	11,648.0	11,661.3	11,670.2	8.9
Accommodation	1,786.5	1,740.7	1,761.5	1,814.4	1,790.6	1,809.0	1,813.7	1,815.5	1.8
Food services and drinking places	9,758.0	9,690.9	9,865.6	10,029.0	9,589.6	9,839.0	9,847.6	9,854.7	7.1
Other services	5,358	5,335	5,353	5,386	5,338	5,360	5,359	5,365	6
Repair and maintenance	1,168.3	1,156.1	1,160.3	1,166.7	1,158.9	1,158.8	1,157.3	1,157.8	0.5
Personal and laundry services	1,297.3	1,287.2	1,296.2	1,308.1	1,282.8	1,293.4	1,292.6	1,293.3	0.7
Membership associations and organizations	2,892.4	2,891.4	2,896.7	2,911.4	2,896.1	2,908.1	2,908.7	2,913.4	4.7
Government	22,535	22,405	22,401	22,390	22,130	21,992	21,982	21,969	-13
Federal	2,871.0	2,811.0	2,823.0	2,823.0	2,869.0	2,826.0	2,824.0	2,819.0	-5.0
Federal, except U.S. Postal Service	2,237.5	2,197.5	2,201.2	2,210.7	2,232.5	2,208.6	2,206.1	2,204.1	-2.0
U.S. Postal Service	633.2	613.8	622.1	612.2	636.8	617.7	618.2	615.3	-2.9
State government	5,120.0	5,212.0	5,222.0	5,111.0	5,087.0	5,073.0	5,078.0	5,073.0	-5.0
State government education	2,404.7	2,563.4	2,568.4	2,447.6	2,376.6	2,414.3	2,420.5	2,416.8	-3.7
State government, excluding education	2,715.3	2,648.9	2,654.0	2,662.9	2,710.2	2,658.3	2,657.3	2,656.2	-1.1
Local government	14,544.0	14,382.0	14,356.0	14,456.0	14,174.0	14,093.0	14,080.0	14,077.0	-3.0
Local government education	8,278.9	8,230.7	8,185.6	8,217.1	7,899.2	7,845.8	7,833.9	7,830.6	-3.3
Local government, excluding education	6,265.0	6,151.0	6,170.4	6,238.8	6,274.3	6,246.7	6,245.6	6,246.0	0.4

1 Includes other industries, not shown separately.

2 Includes motor vehicles, motor vehicle bodies and trailers, and motor vehicle parts.

3 Includes ambulatory health care services, hospitals, and nursing and residential care facilities.

p Preliminary

ESTABLISHMENT DATA

Table B-2. Average weekly hours and overtime of all employees on private nonfarm payrolls by industry sector, seasonally adjusted

Industry	May 2011	Mar. 2012	Apr. 2012 ^p	May 2012 ^p
AVERAGE WEEKLY HOURS				
Total private.....	34.4	34.5	34.5	34.4
Goods-producing.....	40.0	40.2	40.3	40.1
Mining and logging.....	44.7	44.1	44.0	43.7
Construction.....	38.4	38.5	38.7	38.5
Manufacturing.....	40.5	40.7	40.8	40.5
Durable goods.....	40.8	41.1	41.1	40.9
Nondurable goods.....	39.9	40.0	40.1	39.9
Private service-providing.....	33.3	33.4	33.3	33.2
Trade, transportation, and utilities.....	34.5	34.7	34.6	34.5
Wholesale trade.....	38.6	38.7	38.6	38.6
Retail trade.....	31.5	31.9	31.8	31.5
Transportation and warehousing.....	38.7	38.2	38.3	38.2
Utilities.....	42.0	41.4	41.7	41.5
Information.....	36.6	36.6	36.5	36.3
Financial activities.....	37.2	37.2	37.2	37.1
Professional and business services.....	35.7	35.9	35.9	35.8
Education and health services.....	33.0	32.9	32.9	32.9
Leisure and hospitality.....	25.8	26.1	26.1	26.0
Other services.....	31.8	31.7	31.6	31.6
AVERAGE OVERTIME HOURS				
Manufacturing.....	3.1	3.3	3.3	3.2
Durable goods.....	3.1	3.3	3.3	3.2
Nondurable goods.....	3.2	3.3	3.3	3.2

p Preliminary

ESTABLISHMENT DATA

Table B-3. Average hourly and weekly earnings of all employees on private nonfarm payrolls by industry sector, seasonally adjusted

Industry	Average hourly earnings				Average weekly earnings			
	May 2011	Mar. 2012	Apr. 2012 ^p	May 2012 ^p	May 2011	Mar. 2012	Apr. 2012 ^p	May 2012 ^p
Total private.....	\$23.02	\$23.37	\$23.39	\$23.41	\$ 791.89	\$ 806.27	\$ 806.96	\$ 805.30
Goods-producing.....	24.39	24.67	24.70	24.69	975.60	991.73	995.41	990.07
Mining and logging.....	28.23	28.82	28.77	28.74	1,261.88	1,270.96	1,265.88	1,255.94
Construction.....	25.38	25.65	25.68	25.75	974.59	987.53	993.82	991.38
Manufacturing.....	23.67	23.92	23.96	23.92	958.64	973.54	977.57	968.76
Durable goods.....	25.19	25.31	25.35	25.29	1,027.75	1,040.24	1,041.89	1,034.36
Nondurable goods.....	21.15	21.54	21.58	21.57	843.89	861.60	865.36	860.64
Private service-providing.....	22.70	23.07	23.07	23.11	755.91	770.54	768.23	767.25
Trade, transportation, and utilities.....	20.00	20.29	20.32	20.36	690.00	704.06	703.07	702.42
Wholesale trade.....	26.30	26.66	26.65	26.70	1,015.18	1,031.74	1,028.69	1,030.62
Retail trade.....	15.84	16.10	16.13	16.14	498.96	513.59	512.93	508.41
Transportation and warehousing.....	21.52	21.94	22.02	22.02	832.82	838.11	843.37	841.16
Utilities.....	33.66	33.68	33.72	33.54	1,413.72	1,394.35	1,406.12	1,391.91
Information.....	31.59	31.65	31.74	31.76	1,156.19	1,158.39	1,158.51	1,152.89
Financial activities.....	27.73	28.83	28.85	29.01	1,031.56	1,072.48	1,073.22	1,076.27
Professional and business services.....	27.65	28.03	27.98	28.04	987.11	1,006.28	1,004.48	1,003.83
Education and health services.....	23.61	24.07	24.05	24.06	779.13	791.90	791.25	791.57
Leisure and hospitality.....	13.24	13.32	13.35	13.29	341.59	347.65	348.44	345.54
Other services.....	20.41	20.55	20.54	20.59	649.04	651.44	649.06	650.64

p Preliminary

ESTABLISHMENT DATA

Table B-4. Indexes of aggregate weekly hours and payrolls for all employees on private nonfarm payrolls by industry sector, seasonally adjusted

[2007=100]

Industry	Index of aggregate weekly hours ¹					Index of aggregate weekly payrolls ²				
	May 2011	Mar. 2012	Apr. 2012 ^p	May 2012 ^p	Percent change from: Apr. 2012 - May 2012 ^p	May 2011	Mar. 2012	Apr. 2012 ^p	May 2012 ^p	Percent change from: Apr. 2012 - May 2012 ^p
Total private.....	94.0	95.9	95.9	95.7	-0.2	103.2	106.8	107.0	106.9	-0.1
Goods-producing.....	82.0	83.9	84.1	83.6	-0.6	90.4	93.5	93.9	93.3	-0.6
Mining and logging.....	109.1	116.0	115.7	115.1	-0.5	123.7	134.2	133.7	132.8	-0.7
Construction.....	72.8	73.6	74.0	73.2	-1.1	80.3	82.1	82.5	81.9	-0.7
Manufacturing.....	85.4	87.4	87.6	87.1	-0.6	94.0	97.2	97.7	96.9	-0.8
Durable goods.....	83.4	86.3	86.4	86.1	-0.3	93.4	97.0	97.3	96.7	-0.6
Nondurable goods.....	88.9	89.4	89.6	89.1	-0.6	95.4	97.7	98.1	97.5	-0.6
Private service-providing.....	97.4	99.3	99.1	98.9	-0.2	107.1	111.0	110.7	110.7	0.0
Trade, transportation, and utilities.....	93.8	95.3	95.1	95.0	-0.1	100.9	104.0	104.0	104.1	0.1
Wholesale trade.....	93.1	94.5	94.4	94.7	0.3	102.1	105.1	105.0	105.5	0.5
Retail trade.....	93.6	95.4	95.3	94.4	-0.9	98.0	101.6	101.6	100.7	-0.9
Transportation and warehousing.....	95.0	95.3	95.2	95.7	0.5	103.7	106.1	106.4	107.0	0.6
Utilities.....	100.8	100.6	101.3	100.8	-0.5	112.1	112.0	112.8	111.7	-1.0
Information.....	89.3	87.9	87.7	87.1	-0.7	100.4	99.1	99.1	98.5	-0.6
Financial activities.....	94.3	94.6	94.6	94.4	-0.2	102.1	106.5	106.6	106.9	0.3
Professional and business services.....	97.1	100.4	100.6	100.3	-0.3	108.8	114.0	114.0	114.0	0.0
Education and health services.....	106.5	108.4	108.5	108.8	0.3	117.8	122.2	122.3	122.6	0.2
Leisure and hospitality.....	97.8	101.2	101.2	100.7	-0.5	104.4	108.8	109.0	108.0	-0.9
Other services.....	94.1	94.1	93.8	93.9	0.1	108.9	109.8	109.4	109.8	0.4

1 The indexes of aggregate weekly hours are calculated by dividing the current month's estimates of aggregate hours by the corresponding 2007 annual average aggregate hours. Aggregate hours estimates are the product of estimates of average weekly hours and employment.

2 The indexes of aggregate weekly payrolls are calculated by dividing the current month's estimates of aggregate weekly payrolls by the corresponding 2007 annual average aggregate weekly payrolls. Aggregate payrolls estimates are the product of estimates of average hourly earnings, average weekly hours, and employment.

p Preliminary

ESTABLISHMENT DATA

Table B-5. Employment of women on nonfarm payrolls by industry sector, seasonally adjusted

Industry	Women employees (in thousands)				Percent of all employees			
	May 2011	Mar. 2012	Apr. 2012 ^p	May 2012 ^p	May 2011	Mar. 2012	Apr. 2012 ^p	May 2012 ^p
Total nonfarm.....	64,968	65,540	65,624	65,719	49.5	49.3	49.4	49.4
Total private.....	52,324	52,974	53,060	53,158	48.0	47.8	47.8	47.9
Goods-producing.....	4,057	4,076	4,087	4,086	22.5	22.3	22.3	22.3
Mining and logging.....	104	112	112	112	13.4	13.4	13.4	13.4
Construction.....	704	707	709	705	12.8	12.7	12.8	12.8
Manufacturing.....	3,249	3,257	3,266	3,269	27.7	27.3	27.4	27.3
Durable goods.....	1,717	1,729	1,734	1,735	23.6	23.2	23.2	23.2
Nondurable goods.....	1,532	1,528	1,532	1,534	34.3	34.1	34.2	34.3
Private service-providing.....	48,267	48,898	48,973	49,072	53.0	52.8	52.9	52.9
Trade, transportation, and utilities.....	10,037	10,037	10,055	10,091	40.2	39.8	39.8	39.9
Wholesale trade.....	1,659.3	1,682.5	1,686.1	1,689.2	30.0	30.1	30.1	30.0
Retail trade.....	7,232.4	7,204.2	7,223.0	7,248.2	49.4	48.9	49.0	49.1
Transportation and warehousing.....	1,009.7	1,010.8	1,006.1	1,013.0	23.6	23.2	23.2	23.1
Utilities.....	135.4	139.3	140.0	140.1	24.4	24.8	24.9	25.0
Information.....	1,084	1,063	1,064	1,062	40.6	40.4	40.5	40.4
Financial activities.....	4,496	4,485	4,477	4,474	58.4	58.1	58.0	57.9
Professional and business services.....	7,682	7,880	7,901	7,906	44.4	44.3	44.3	44.4
Education and health services.....	15,229	15,520	15,545	15,594	76.8	76.7	76.7	76.8
Leisure and hospitality.....	6,927	7,094	7,103	7,107	52.2	52.2	52.3	52.3
Other services.....	2,812	2,819	2,828	2,838	52.7	52.6	52.8	52.9
Government.....	12,644	12,566	12,564	12,561	57.1	57.1	57.2	57.2

p Preliminary

NOTE: Data in this table have been corrected. For more information see http://www.bls.gov/bls/ceswomen_usps_correction.htm.

ESTABLISHMENT DATA

Table B-6. Employment of production and nonsupervisory employees on private nonfarm payrolls by industry sector, seasonally adjusted¹

[In thousands]

Industry	May 2011	Mar. 2012	Apr. 2012 ^p	May 2012 ^p
Total private.....	89,929	91,595	91,688	91,741
Goods-producing.....	12,967	13,241	13,239	13,213
Mining and logging.....	584	633	635	633
Construction.....	4,155	4,199	4,184	4,146
Manufacturing.....	8,228	8,409	8,420	8,434
Durable goods.....	4,977	5,143	5,157	5,171
Nondurable goods.....	3,251	3,266	3,263	3,263
Private service-providing.....	76,962	78,354	78,449	78,528
Trade, transportation, and utilities.....	21,164	21,422	21,454	21,500
Wholesale trade.....	4,428.0	4,503.6	4,515.3	4,532.9
Retail trade.....	12,601.5	12,708.9	12,733.8	12,732.0
Transportation and warehousing.....	3,690.9	3,761.8	3,757.7	3,791.3
Utilities.....	443.6	447.5	446.7	443.4
Information.....	2,146	2,119	2,120	2,118
Financial activities.....	5,895	5,924	5,932	5,942
Professional and business services.....	14,213	14,658	14,695	14,702
Education and health services.....	17,362	17,741	17,768	17,803
Leisure and hospitality.....	11,713	12,003	11,998	11,984
Other services.....	4,469	4,487	4,482	4,479

¹ Data relate to production employees in mining and logging and manufacturing, construction employees in construction, and nonsupervisory employees in the service-providing industries. These groups account for approximately four-fifths of the total employment on private nonfarm payrolls.

^p Preliminary

ESTABLISHMENT DATA

Table B-7. Average weekly hours and overtime of production and nonsupervisory employees on private nonfarm payrolls by industry sector, seasonally adjusted¹

Industry	May 2011	Mar. 2012	Apr. 2012 ^p	May 2012 ^p
AVERAGE WEEKLY HOURS				
Total private.....	33.6	33.7	33.7	33.7
Goods-producing.....	40.9	41.2	41.2	41.0
Mining and logging.....	46.5	47.2	47.6	46.9
Construction.....	39.1	39.3	39.3	39.0
Manufacturing.....	41.5	41.6	41.7	41.5
Durable goods.....	41.8	42.1	42.1	41.9
Nondurable goods.....	40.9	40.9	41.0	40.8
Private service-providing.....	32.4	32.5	32.4	32.5
Trade, transportation, and utilities.....	33.7	33.8	33.8	33.8
Wholesale trade.....	38.6	38.6	38.6	38.5
Retail trade.....	30.4	30.7	30.6	30.6
Transportation and warehousing.....	37.9	37.7	37.8	38.1
Utilities.....	42.4	40.4	41.1	41.2
Information.....	36.4	36.0	35.9	35.7
Financial activities.....	36.4	36.7	36.6	36.5
Professional and business services.....	35.2	35.2	35.2	35.3
Education and health services.....	32.3	32.4	32.3	32.3
Leisure and hospitality.....	24.8	25.0	24.9	24.9
Other services.....	30.8	30.7	30.6	30.5
AVERAGE OVERTIME HOURS				
Manufacturing.....	4.1	4.2	4.2	4.1
Durable goods.....	4.2	4.4	4.4	4.3
Nondurable goods.....	4.0	4.0	3.9	3.9

¹ Data relate to production employees in mining and logging and manufacturing, construction employees in construction, and nonsupervisory employees in the service-providing industries. These groups account for approximately four-fifths of the total employment on private nonfarm payrolls.

p Preliminary

ESTABLISHMENT DATA

Table B-8. Average hourly and weekly earnings of production and nonsupervisory employees on private nonfarm payrolls by industry sector, seasonally adjusted¹

Industry	Average hourly earnings				Average weekly earnings			
	May 2011	Mar. 2012	Apr. 2012 ^p	May 2012 ^p	May 2011	Mar. 2012	Apr. 2012 ^p	May 2012 ^p
Total private.....	\$19.43	\$19.67	\$19.71	\$19.70	\$ 652.85	\$ 662.88	\$ 664.23	\$ 663.89
Goods-producing.....	20.63	20.89	20.93	20.91	843.77	860.67	862.32	857.31
Mining and logging.....	24.46	25.62	25.77	25.66	1,137.39	1,209.26	1,226.65	1,203.45
Construction.....	23.57	23.93	23.91	23.98	921.59	940.45	939.66	935.22
Manufacturing.....	18.92	19.06	19.12	19.09	785.18	792.90	797.30	792.24
Durable goods.....	20.11	20.16	20.21	20.19	840.60	848.74	850.84	845.96
Nondurable goods.....	17.05	17.28	17.36	17.29	697.35	706.75	711.76	705.43
Private service-providing.....	19.18	19.41	19.45	19.44	621.43	630.83	630.18	631.80
Trade, transportation, and utilities.....	17.12	17.36	17.39	17.39	576.94	586.77	587.78	587.78
Wholesale trade.....	21.98	22.14	22.17	22.20	848.43	854.60	855.76	854.70
Retail trade.....	13.43	13.78	13.77	13.83	408.27	423.05	421.36	423.20
Transportation and warehousing.....	19.45	19.58	19.63	19.44	737.16	738.17	742.01	740.66
Utilities.....	30.84	31.11	31.58	31.29	1,307.62	1,256.84	1,297.94	1,289.15
Information.....	26.61	26.79	26.93	26.63	968.60	964.44	966.79	950.69
Financial activities.....	21.80	22.45	22.53	22.58	793.52	823.92	824.60	824.17
Professional and business services.....	23.10	23.24	23.25	23.27	813.12	818.05	818.40	821.43
Education and health services.....	20.71	21.01	21.04	21.00	668.93	680.72	679.59	678.30
Leisure and hospitality.....	11.49	11.58	11.64	11.58	284.95	289.50	289.84	288.34
Other services.....	17.28	17.37	17.38	17.41	532.22	533.26	531.83	531.01

¹ Data relate to production employees in mining and logging and manufacturing, construction employees in construction, and nonsupervisory employees in the service-providing industries. These groups account for approximately four-fifths of the total employment on private nonfarm payrolls.

p Preliminary

ESTABLISHMENT DATA

Table B-9. Indexes of aggregate weekly hours and payrolls for production and nonsupervisory employees on private nonfarm payrolls by industry sector, seasonally adjusted¹

[2002=100]

Industry	Index of aggregate weekly hours ²					Index of aggregate weekly payrolls ³				
	May 2011	Mar. 2012	Apr. 2012 ^p	May 2012 ^p	Percent change from: Apr. 2012 - May 2012 ^p	May 2011	Mar. 2012	Apr. 2012 ^p	May 2012 ^p	Percent change from: Apr. 2012 - May 2012 ^p
Total private.....	101.0	103.1	103.2	103.3	0.1	131.1	135.5	136.0	136.0	0.0
Goods-producing.....	81.0	83.4	83.4	82.8	-0.7	102.4	106.7	106.8	106.0	-0.7
Mining and logging.....	144.3	158.8	160.6	157.8	-1.7	205.3	236.6	240.7	235.4	-2.2
Construction.....	81.3	82.6	82.3	81.0	-1.6	103.5	106.8	106.3	104.8	-1.4
Manufacturing.....	78.4	80.3	80.6	80.3	-0.4	97.0	100.1	100.8	100.3	-0.5
Durable goods.....	78.2	81.4	81.6	81.4	-0.2	98.2	102.4	103.0	102.6	-0.4
Nondurable goods.....	78.3	78.7	78.8	78.4	-0.5	94.4	96.1	96.7	95.8	-0.9
Private service-providing.....	106.6	108.9	108.7	109.1	0.4	140.2	144.9	144.9	145.5	0.4
Trade, transportation, and utilities.....	99.4	100.9	101.1	101.3	0.2	121.4	125.0	125.4	125.7	0.2
Wholesale trade.....	100.7	102.4	102.6	102.8	0.2	130.3	133.5	134.0	134.4	0.3
Retail trade.....	97.0	98.8	98.6	98.6	0.0	111.6	116.6	116.4	116.9	0.4
Transportation and warehousing.....	105.3	106.8	106.9	108.7	1.7	129.9	132.6	133.1	134.1	0.8
Utilities.....	96.2	92.5	93.9	93.4	-0.5	123.8	120.1	123.8	122.0	-1.5
Information.....	89.2	87.1	86.9	86.3	-0.7	117.4	115.5	115.8	113.8	-1.7
Financial activities.....	102.7	104.0	103.9	103.8	-0.1	138.4	144.4	144.7	144.9	0.1
Professional and business services.....	112.1	115.6	115.9	116.3	0.3	154.1	159.9	160.4	161.1	0.4
Education and health services.....	121.0	124.0	123.8	124.0	0.2	164.7	171.3	171.2	171.2	0.0
Leisure and hospitality.....	106.4	109.9	109.4	109.3	-0.1	138.8	144.5	144.7	143.7	-0.7
Other services.....	96.5	96.6	96.2	95.8	-0.4	121.5	122.3	121.8	121.5	-0.2

1 Data relate to production employees in mining and logging and manufacturing, construction employees in construction, and nonsupervisory employees in the service-providing industries. These groups account for approximately four-fifths of the total employment on private nonfarm payrolls.

2 The indexes of aggregate weekly hours are calculated by dividing the current month's estimates of aggregate hours by the corresponding 2002 annual average aggregate hours. Aggregate hours estimates are the product of estimates of average weekly hours and employment.

3 The indexes of aggregate weekly payrolls are calculated by dividing the current month's estimates of aggregate weekly payrolls by the corresponding 2002 annual average aggregate weekly payrolls. Aggregate payrolls estimates are the product of estimates of average hourly earnings, average weekly hours, and employment.

p Preliminary