

**Transmission of material in this release is embargoed until 8:30 a.m. (EST) Friday, March 4, 2011**

USDL-11-0271

Technical information:

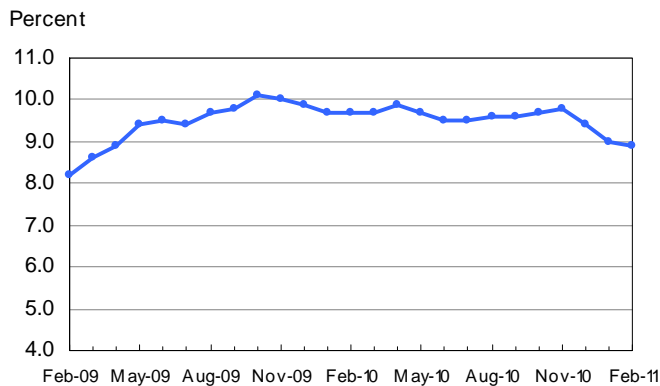
Household data: (202) 691-6378 • cpsinfo@bls.gov • www.bls.gov/cps  
Establishment data: (202) 691-6555 • cesinfo@bls.gov • www.bls.gov/ces

Media contact: (202) 691-5902 • PressOffice@bls.gov

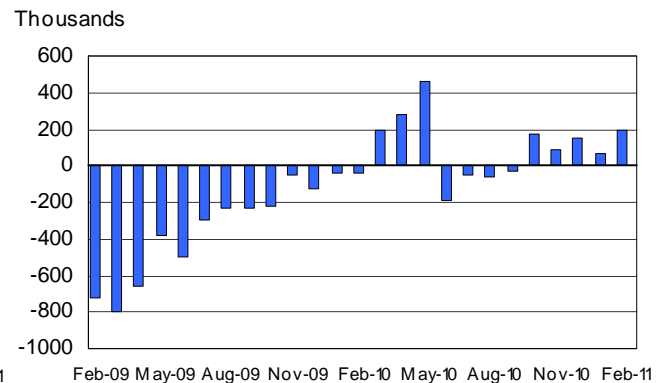
**THE EMPLOYMENT SITUATION – FEBRUARY 2011**

**Nonfarm payroll employment** increased by 192,000 in February, and the **unemployment rate** was little changed at 8.9 percent, the U.S. Bureau of Labor Statistics reported today. Job gains occurred in manufacturing, construction, professional and business services, health care, and transportation and warehousing.

**Chart 1. Unemployment rate, seasonally adjusted, February 2009 – February 2011**



**Chart 2. Nonfarm payroll employment over-the-month change, seasonally adjusted, February 2009 – February 2011**



**Household Survey Data**

The number of **unemployed persons** (13.7 million) and the **unemployment rate** (8.9 percent) changed little in February. The labor force was about unchanged over the month. The jobless rate was down by 0.9 percentage point since November 2010. (See table A-1.)

Among the **major worker groups**, the unemployment rates for adult men (8.7 percent), adult women (8.0 percent), teenagers (23.9 percent), whites (8.0 percent), blacks (15.3 percent), and Hispanics (11.6 percent) showed little or no change in February. The jobless rate for Asians was 6.8 percent, not seasonally adjusted. (See tables A-1, A-2, and A-3.)

The number of **job losers and persons who completed temporary jobs**, at 8.3 million, continued to trend down in February and has fallen by 1.2 million over the past 12 months. The number of **long-term unemployed** (those jobless for 27 weeks or more) was 6.0 million and accounted for 43.9 percent of the unemployed. (See tables A-11 and A-12.)

Both the **civilian labor force participation rate**, at 64.2 percent, and the **employment-population ratio**, at 58.4 percent, were unchanged in February. (See table A-1.)

The number of persons employed **part time for economic reasons** (sometimes referred to as involuntary part-time workers) was essentially unchanged at 8.3 million in February. These individuals were working part time because their hours had been cut back or because they were unable to find a full-time job. (See table A-8.)

In February, 2.7 million persons were **marginally attached to the labor force**, up from 2.5 million a year earlier. (These data are not seasonally adjusted.) These individuals were not in the labor force, wanted and were available for work, and had looked for a job sometime in the prior 12 months. They were not counted as unemployed because they had not searched for work in the 4 weeks preceding the survey. (See table A-16.)

Among the marginally attached, there were 1.0 million **discouraged workers** in February, a decrease of 184,000 from a year earlier. (These data are not seasonally adjusted.) Discouraged workers are persons not currently looking for work because they believe no jobs are available for them. The remaining 1.7 million persons marginally attached to the labor force in February had not searched for work in the 4 weeks preceding the survey for reasons such as school attendance or family responsibilities. (See table A-16.)

### **Establishment Survey Data**

Total **nonfarm payroll employment** rose by 192,000 in February. Job gains occurred in manufacturing, construction, and several service-providing industries. Since a recent low in February 2010, total payroll employment has grown by 1.3 million, or an average of 106,000 per month. (See table B-1.)

**Manufacturing** employment rose by 33,000 in February. Almost all of the gain occurred in durable goods industries, including machinery (+9,000) and fabricated metal products (+7,000). Manufacturing has added 195,000 jobs since its most recent trough in December 2009; durable goods manufacturing added 233,000 jobs during this period.

**Construction** employment grew by 33,000 in February, following a decline of 22,000 in January that may have reflected severe winter weather. Within construction, specialty trade contractors accounted for the bulk of the February job gain (+28,000).

Employment in the service-providing sector continued to expand in February, led by a gain of 47,000 in **professional and business services**. Employment services added 29,000 jobs, and employment rose by 7,000 in management and technical consulting. Within employment services, the number of jobs in temporary help services edged up over the month.

**Health care** employment continued to increase in February (+34,000). Over the prior 12 months, health care had added 260,000 jobs, or an average of 22,000 jobs per month.

**Transportation and warehousing** employment increased by 22,000 in February, with half of that gain in truck transportation (+11,000).

Employment in both **state** and **local government** edged down over the month. Local government has lost 377,000 jobs since its peak in September 2008.

The **average workweek for all employees** on private nonfarm payrolls was unchanged at 34.2 hours in February. The manufacturing workweek for all employees rose by 0.1 hour to 40.5 hours, while factory overtime rose by 0.2 hour to 3.3 hours. The average workweek for **production and nonsupervisory employees** on private nonfarm payrolls increased by 0.1 hour to 33.5 hours. (See tables B-2 and B-7.)

In February, **average hourly earnings for all employees** on private nonfarm payrolls increased by 1 cent to \$22.87. Over the past 12 months, average hourly earnings have increased by 1.7 percent. In February, average hourly earnings of private-sector **production and nonsupervisory employees** were unchanged at \$19.33. (See tables B-3 and B-8.)

The change in total nonfarm payroll employment for December was revised from +121,000 to +152,000, and the change for January was revised from +36,000 to +63,000.

---

**The Employment Situation for March is scheduled to be released on Friday, April 1, 2011, at 8:30 a.m. (EDT).**

# HOUSEHOLD DATA

## Summary table A. Household data, seasonally adjusted

[Numbers in thousands]

Category	Feb. 2010	Dec. 2010	Jan. 2011	Feb. 2011	Change from: Jan. 2011-Feb. 2011
<b>Employment status</b>					
Civilian noninstitutional population.....	236,998	238,889	238,704	238,851	147
Civilian labor force.....	153,558	153,690	153,186	153,246	60
Participation rate.....	64.8	64.3	64.2	64.2	0.0
Employed.....	138,698	139,206	139,323	139,573	250
Employment-population ratio.....	58.5	58.3	58.4	58.4	0.0
Unemployed.....	14,860	14,485	13,863	13,673	-190
Unemployment rate.....	9.7	9.4	9.0	8.9	-0.1
Not in labor force.....	83,440	85,199	85,518	85,605	87
<b>Unemployment rates</b>					
Total, 16 years and over.....	9.7	9.4	9.0	8.9	-0.1
Adult men (20 years and over).....	10.0	9.4	8.8	8.7	-0.1
Adult women (20 years and over).....	8.0	8.1	7.9	8.0	0.1
Teenagers (16 to 19 years).....	25.0	25.4	25.7	23.9	-1.8
White.....	8.8	8.5	8.0	8.0	0.0
Black or African American.....	15.8	15.8	15.7	15.3	-0.4
Asian (not seasonally adjusted).....	8.4	7.2	6.9	6.8	-
Hispanic or Latino ethnicity.....	12.3	13.0	11.9	11.6	-0.3
Total, 25 years and over.....	8.3	8.1	7.6	7.6	0.0
Less than a high school diploma.....	15.5	15.3	14.2	13.9	-0.3
High school graduates, no college.....	10.5	9.8	9.4	9.5	0.1
Some college or associate degree.....	7.9	8.1	8.0	7.8	-0.2
Bachelor's degree and higher.....	4.9	4.8	4.2	4.3	0.1
<b>Reason for unemployment</b>					
Job losers and persons who completed temporary jobs.....	9,493	8,923	8,519	8,334	-185
Job leavers.....	878	914	910	898	-12
Reentrants.....	3,444	3,408	3,357	3,352	-5
New entrants.....	1,220	1,311	1,351	1,337	-14
<b>Duration of unemployment</b>					
Less than 5 weeks.....	2,729	2,725	2,678	2,390	-288
5 to 14 weeks.....	3,380	3,184	3,016	3,094	78
15 to 26 weeks.....	2,703	2,205	2,285	2,179	-106
27 weeks and over.....	6,131	6,441	6,210	5,993	-217
<b>Employed persons at work part time</b>					
Part time for economic reasons.....	8,793	8,931	8,407	8,340	-67
Slack work or business conditions.....	6,188	6,011	5,771	5,630	-141
Could only find part-time work.....	2,174	2,568	2,510	2,415	-95
Part time for noneconomic reasons.....	18,326	18,184	17,929	18,220	291
<b>Persons not in the labor force (not seasonally adjusted)</b>					
Marginally attached to the labor force.....	2,527	2,609	2,800	2,730	-
Discouraged workers.....	1,204	1,318	993	1,020	-

- Over-the-month changes are not displayed for not seasonally adjusted data.

NOTE: Persons whose ethnicity is identified as Hispanic or Latino may be of any race. Detail for the seasonally adjusted data shown in this table will not necessarily add to totals because of the independent seasonal adjustment of the various series. Updated population controls are introduced annually with the release of January data.

**ESTABLISHMENT DATA**  
**Summary table B. Establishment data, seasonally adjusted**

Category	Feb. 2010	Dec. 2010	Jan. 2011 <sup>p</sup>	Feb. 2011 <sup>p</sup>
<b>EMPLOYMENT BY SELECTED INDUSTRY</b> (Over-the-month change, in thousands)				
Total nonfarm.....	-35	152	63	192
Total private.....	-21	167	68	222
Goods-producing.....	-50	4	35	70
Mining and logging.....	5	-1	4	4
Construction.....	-52	-6	-22	33
Manufacturing.....	-3	11	53	33
Durable goods <sup>1</sup> .....	-5	13	61	30
Motor vehicles and parts.....	-10.4	-2.1	20.0	1.0
Nondurable goods.....	2	-2	-8	3
Private service-providing <sup>1</sup> .....	29	163	33	152
Wholesale trade.....	-7.8	3.8	9.5	11.7
Retail trade.....	0.4	6.2	30.6	-8.1
Transportation and warehousing.....	-2.8	50.1	-44.4	22.0
Information.....	-6	-5	-9	0
Financial activities.....	-9	1	-12	3
Professional and business services <sup>1</sup> .....	31	58	35	47
Temporary help services.....	22.7	43.1	-4.9	15.5
Education and health services <sup>1</sup> .....	28	28	24	40
Health care and social assistance.....	20.7	25.3	11.8	36.2
Leisure and hospitality.....	1	17	-3	21
Other services.....	-5	2	4	14
Government.....	-14	-15	-5	-30
<b>WOMEN AND PRODUCTION AND NONSUPERVISORY EMPLOYEES</b> AS A PERCENT OF ALL EMPLOYEES <sup>2</sup>				
Total nonfarm women employees.....	50.0	49.6	49.6	49.6
Total private women employees.....	48.5	48.2	48.1	48.1
Total private production and nonsupervisory employees.....	82.4	82.4	82.4	82.4
<b>HOURS AND EARNINGS</b> ALL EMPLOYEES				
<b>Total private</b>				
Average weekly hours.....	34.0	34.2	34.2	34.2
Average hourly earnings.....	\$ 22.48	\$ 22.77	\$ 22.86	\$ 22.87
Average weekly earnings.....	\$764.32	\$778.73	\$781.81	\$782.15
Index of aggregate weekly hours (2007=100) <sup>3</sup> .....	91.0	92.6	92.6	92.8
Over-the-month percent change.....	0.0	0.2	0.0	0.2
Index of aggregate weekly payrolls (2007=100) <sup>4</sup> .....	97.5	100.5	101.0	101.2
Over-the-month percent change.....	0.1	0.2	0.5	0.2
<b>HOURS AND EARNINGS</b> PRODUCTION AND NONSUPERVISORY EMPLOYEES				
<b>Total private</b>				
Average weekly hours.....	33.2	33.5	33.4	33.5
Average hourly earnings.....	\$ 18.93	\$ 19.23	\$ 19.33	\$ 19.33
Average weekly earnings.....	\$628.48	\$644.21	\$645.62	\$647.56
Index of aggregate weekly hours (2002=100) <sup>3</sup> .....	97.6	99.6	99.4	99.8
Over-the-month percent change.....	-0.3	0.1	-0.2	0.4
Index of aggregate weekly payrolls (2002=100) <sup>4</sup> .....	123.4	128.0	128.3	129.0
Over-the-month percent change.....	-0.2	0.1	0.2	0.5
<b>DIFFUSION INDEX</b> (Over 1-month span) <sup>5</sup>				
Total private.....	48.3	58.6	60.1	68.2
Manufacturing.....	53.1	59.3	73.5	64.2

1 Includes other industries, not shown separately.

2 Data relate to production employees in mining and logging and manufacturing, construction employees in construction, and nonsupervisory employees in the service-providing industries.

3 The indexes of aggregate weekly hours are calculated by dividing the current month's estimates of aggregate hours by the corresponding annual average aggregate hours.

4 The indexes of aggregate weekly payrolls are calculated by dividing the current month's estimates of aggregate weekly payrolls by the corresponding annual average aggregate weekly payrolls.

5 Figures are the percent of industries with employment increasing plus one-half of the industries with unchanged employment, where 50 percent indicates an equal balance between industries with increasing and decreasing employment.

p Preliminary

## **Frequently Asked Questions about Employment and Unemployment Estimates**

### **Why are there two monthly measures of employment?**

The household survey and establishment survey both produce sample-based estimates of employment and both have strengths and limitations. The establishment survey employment series has a smaller margin of error on the measurement of month-to-month change than the household survey because of its much larger sample size. An over-the-month employment change of about 100,000 is statistically significant in the establishment survey, while the threshold for a statistically significant change in the household survey is about 400,000. However, the household survey has a more expansive scope than the establishment survey because it includes the self-employed, unpaid family workers, agricultural workers, and private household workers, who are excluded by the establishment survey. The household survey also provides estimates of employment for demographic groups.

### **Are undocumented immigrants counted in the surveys?**

It is likely that both surveys include at least some undocumented immigrants. However, neither the establishment nor the household survey is designed to identify the legal status of workers. Therefore, it is not possible to determine how many are counted in either survey. The establishment survey does not collect data on the legal status of workers. The household survey does include questions which identify the foreign and native born, but it does not include questions about the legal status of the foreign born.

### **Why does the establishment survey have revisions?**

The establishment survey revises published estimates to improve its data series by incorporating additional information that was not available at the time of the initial publication of the estimates. The establishment survey revises its initial monthly estimates twice, in the immediately succeeding 2 months, to incorporate additional sample receipts from respondents in the survey and recalculated seasonal adjustment factors. For more information on the monthly revisions, please visit [www.bls.gov/ces/cesrevinfo.htm](http://www.bls.gov/ces/cesrevinfo.htm).

On an annual basis, the establishment survey incorporates a benchmark revision that re-anchors estimates to nearly complete employment counts available from unemployment insurance tax records. The benchmark helps to control for sampling and modeling errors in the estimates. For more information on the annual benchmark revision, please visit [www.bls.gov/web/cesbmart.htm](http://www.bls.gov/web/cesbmart.htm).

### **Does the establishment survey sample include small firms?**

Yes; about 40 percent of the establishment survey sample is comprised of business establishments with fewer than 20 employees. The establishment survey sample is designed to maximize the reliability of the total nonfarm employment estimate; firms from all size classes and industries are appropriately sampled to achieve that goal.

### **Does the establishment survey account for employment from new businesses?**

Yes; monthly establishment survey estimates include an adjustment to account for the net employment change generated by business births and deaths. The adjustment comes from an econometric model that forecasts the monthly net jobs impact of business births and deaths based on the actual past values of the net impact that can be observed with a lag from the Quarterly Census of Employment and Wages. The

establishment survey uses modeling rather than sampling for this purpose because the survey is not immediately able to bring new businesses into the sample. There is an unavoidable lag between the birth of a new firm and its appearance on the sampling frame and availability for selection. BLS adds new businesses to the survey twice a year.

**Is the count of unemployed persons limited to just those people receiving unemployment insurance benefits?**

No; the estimate of unemployment is based on a monthly sample survey of households. All persons who are without jobs and are actively seeking and available to work are included among the unemployed. (People on temporary layoff are included even if they do not actively seek work.) There is no requirement or question relating to unemployment insurance benefits in the monthly survey.

**Does the official unemployment rate exclude people who have stopped looking for work?**

Yes; however, there are separate estimates of persons outside the labor force who want a job, including those who have stopped looking because they believe no jobs are available (discouraged workers). In addition, alternative measures of labor underutilization (some of which include discouraged workers and other groups not officially counted as unemployed) are published each month in The Employment Situation news release.

**How can unusually severe weather affect employment and hours estimates?**

In the establishment survey, the reference period is the pay period that includes the 12<sup>th</sup> of the month. Unusually severe weather is more likely to have an impact on average weekly hours than on employment. Average weekly hours are estimated for paid time during the pay period, including pay for holidays, sick leave, or other time off. The impact of severe weather on hours estimates typically, but not always, results in a reduction in average weekly hours. For example, some employees may be off work for part of the pay period and not receive pay for the time missed, while some workers, such as those dealing with cleanup or repair, may work extra hours.

In order for severe weather conditions to reduce the estimate of payroll employment, employees have to be off work without pay for the entire pay period. About half of all employees in the payroll survey have a 2-week, semi-monthly, or monthly pay period. Employees who receive pay for any part of the pay period, even 1 hour, are counted in the payroll employment figures. It is not possible to quantify the effect of extreme weather on estimates of employment from the establishment survey.

In the household survey, the reference period is generally the calendar week that includes the 12<sup>th</sup> of the month. Persons who miss the entire week's work for weather-related events are counted as employed whether or not they are paid for the time off. The household survey collects data on the number of persons who usually work full time but had reduced hours, or had a job but were not at work the entire week, due to bad weather. Current and historical data are available on the household survey's most requested statistics page at <http://data.bls.gov/cgi-bin/surveymost?ln>.

# Technical Note

This news release presents statistics from two major surveys, the Current Population Survey (household survey) and the Current Employment Statistics survey (establishment survey). The household survey provides information on the labor force, employment, and unemployment that appears in the "A" tables, marked HOUSEHOLD DATA. It is a sample survey of about 60,000 households conducted by the U.S. Census Bureau for the U.S. Bureau of Labor Statistics (BLS).

The establishment survey provides information on employment, hours, and earnings of employees on nonfarm payrolls; the data appear in the "B" tables, marked ESTABLISHMENT DATA. BLS collects these data each month from the payroll records of a sample of nonagricultural business establishments. The sample includes about 140,000 businesses and government agencies representing approximately 410,000 worksites and is drawn from a sampling frame of roughly 8.9 million unemployment insurance tax accounts. The active sample includes approximately one-third of all nonfarm payroll employees.

For both surveys, the data for a given month relate to a particular week or pay period. In the household survey, the reference period is generally the calendar week that contains the 12th day of the month. In the establishment survey, the reference period is the pay period including the 12th, which may or may not correspond directly to the calendar week.

## Coverage, definitions, and differences between surveys

**Household survey.** The sample is selected to reflect the entire civilian noninstitutional population. Based on responses to a series of questions on work and job search activities, each person 16 years and over in a sample household is classified as employed, unemployed, or not in the labor force.

People are classified as *employed* if they did any work at all as paid employees during the reference week; worked in their own business, profession, or on their own farm; or worked without pay at least 15 hours in a family business or farm. People are also counted as employed if they were temporarily absent from their jobs because of illness, bad weather, vacation, labor-management disputes, or personal reasons.

People are classified as *unemployed* if they meet all of the following criteria: they had no employment during the reference week; they were available for work at that time; and they made specific efforts to find employment sometime during the 4-week period ending with the reference week. Persons laid off from a job and expecting recall need not be looking for work to be counted as unemployed. The unemployment data derived from the household survey in no way depend upon the eligibility for or receipt of unemployment insurance benefits.

The *civilian labor force* is the sum of employed and unemployed persons. Those not classified as employed or unemployed are *not in the labor force*. The *unemployment rate* is the number unemployed as a percent of the labor force. The *labor force participation rate* is the labor force as a percent of the population, and the *employment-population ratio* is the employed as a percent of the population. Additional information about the household survey can be found at [www.bls.gov/cps/documentation.htm](http://www.bls.gov/cps/documentation.htm).

**Establishment survey.** The sample establishments are drawn from private nonfarm businesses such as factories, offices, and stores, as well as from federal, state, and local government entities. *Employees on nonfarm payrolls* are those who received pay for any part of the reference pay period, including persons on paid leave. Persons are counted in each job they hold. *Hours and earnings* data are produced for the private sector for all employees and for production and nonsupervisory employees. *Production and nonsupervisory employees* are defined as production and related employees in manufacturing and mining and logging, construction workers in construction, and nonsupervisory employees in private service-providing industries.

Industries are classified on the basis of an establishment's principal activity in accordance with the 2007 version of the North American Industry Classification System. Additional information about the establishment survey can be found at [www.bls.gov/ces/#technical](http://www.bls.gov/ces/#technical).

**Differences in employment estimates.** The numerous conceptual and methodological differences between the household and establishment surveys result in important distinctions in the employment estimates derived from the surveys. Among these are:

- The household survey includes agricultural workers, the self-employed, unpaid family workers, and private household workers among the employed. These groups are excluded from the establishment survey.
- The household survey includes people on unpaid leave among the employed. The establishment survey does not.
- The household survey is limited to workers 16 years of age and older. The establishment survey is not limited by age.
- The household survey has no duplication of individuals, because individuals are counted only once, even if they hold more than one job. In the establishment survey, employees working at more than one job and thus appearing on more than one payroll are counted separately for each appearance.



## Seasonal adjustment

Over the course of a year, the size of the nation's labor force and the levels of employment and unemployment undergo regularly occurring fluctuations. These events may result from seasonal changes in weather, major holidays, and the opening and closing of schools. The effect of such seasonal variation can be very large.

Because these seasonal events follow a more or less regular pattern each year, their influence on the level of a series can be tempered by adjusting for regular seasonal variation. These adjustments make nonseasonal developments, such as declines in employment or increases in the participation of women in the labor force, easier to spot. For example, in the household survey, the large number of youth entering the labor force each June is likely to obscure any other changes that have taken place relative to May, making it difficult to determine if the level of economic activity has risen or declined. Similarly, in the establishment survey, payroll employment in education declines by about 20 percent at the end of the spring term and later rises with the start of the fall term, obscuring the underlying employment trends in the industry. Because seasonal employment changes at the end and beginning of the school year can be estimated, the statistics can be adjusted to make underlying employment patterns more discernable. The seasonally adjusted figures provide a more useful tool with which to analyze changes in month-to-month economic activity.

Many seasonally adjusted series are independently adjusted in both the household and establishment surveys. However, the adjusted series for many major estimates, such as total payroll employment, employment in most major sectors, total employment, and unemployment are computed by aggregating independently adjusted component series. For example, total unemployment is derived by summing the adjusted series for four major age-sex components; this differs from the unemployment estimate that would be obtained by directly adjusting the total or by combining the duration, reasons, or more detailed age categories.

For both the household and establishment surveys, a concurrent seasonal adjustment methodology is used in which new seasonal factors are calculated each month using all relevant data, up to and including the data for the current month. In the household survey, new seasonal factors are used to adjust only the current month's data. In the establishment survey, however, new seasonal factors are used each month to adjust the three most recent monthly estimates. The prior 2 months are routinely revised to incorporate additional sample reports and recalculated seasonal adjustment factors. In both surveys, 5-year revisions to historical data are made once a year.

## Reliability of the estimates

Statistics based on the household and establishment surveys are subject to both sampling and nonsampling

error. When a sample rather than the entire population is surveyed, there is a chance that the sample estimates may differ from the "true" population values they represent. The exact difference, or *sampling error*, varies depending on the particular sample selected, and this variability is measured by the standard error of the estimate. There is about a 90-percent chance, or level of confidence, that an estimate based on a sample will differ by no more than 1.6 standard errors from the "true" population value because of sampling error. BLS analyses are generally conducted at the 90-percent level of confidence.

For example, the confidence interval for the monthly change in total nonfarm employment from the establishment survey is on the order of plus or minus 100,000. Suppose the estimate of nonfarm employment increases by 50,000 from one month to the next. The 90-percent confidence interval on the monthly change would range from -50,000 to +150,000 (50,000 +/- 100,000). These figures do not mean that the sample results are off by these magnitudes, but rather that there is about a 90-percent chance that the "true" over-the-month change lies within this interval. Since this range includes values of less than zero, we could not say with confidence that nonfarm employment had, in fact, increased that month. If, however, the reported nonfarm employment rise was 250,000, then all of the values within the 90-percent confidence interval would be greater than zero. In this case, it is likely (at least a 90-percent chance) that nonfarm employment had, in fact, risen that month. At an unemployment rate of around 5.5 percent, the 90-percent confidence interval for the monthly change in unemployment as measured by the household survey is about +/- 280,000, and for the monthly change in the unemployment rate it is about +/- 0.19 percentage point.

In general, estimates involving many individuals or establishments have lower standard errors (relative to the size of the estimate) than estimates which are based on a small number of observations. The precision of estimates also is improved when the data are cumulated over time, such as for quarterly and annual averages.

The household and establishment surveys are also affected by *nonsampling error*, which can occur for many reasons, including the failure to sample a segment of the population, inability to obtain information for all respondents in the sample, inability or unwillingness of respondents to provide correct information on a timely basis, mistakes made by respondents, and errors made in the collection or processing of the data.

For example, in the establishment survey, estimates for the most recent 2 months are based on incomplete returns; for this reason, these estimates are labeled preliminary in the tables. It is only after two successive revisions to a monthly estimate, when nearly all sample reports have been received, that the estimate is considered final.

Another major source of nonsampling error in the establishment survey is the inability to capture, on a timely basis, employment generated by new firms. To correct for this systematic underestimation of employment growth, an estimation procedure with two components is used to

account for business births. The first component excludes employment losses from business deaths from sample-based estimation in order to offset the missing employment gains from business births. This is incorporated into the sample-based estimation procedure by simply not reflecting sample units going out of business, but imputing to them the same employment trend as the other firms in the sample. This procedure accounts for most of the net birth/death employment.

The second component is an ARIMA time series model designed to estimate the residual net birth/death employment not accounted for by the imputation. The historical time series used to create and test the ARIMA model was derived from the unemployment insurance universe micro-level database, and reflects the actual residual net of births and deaths over the past 5 years.

The sample-based estimates from the establishment survey are adjusted once a year (on a lagged basis) to

universe counts of payroll employment obtained from administrative records of the unemployment insurance program. The difference between the March sample-based employment estimates and the March universe counts is known as a benchmark revision, and serves as a rough proxy for total survey error. The new benchmarks also incorporate changes in the classification of industries. Over the past decade, absolute benchmark revisions for total nonfarm employment have averaged 0.3 percent, with a range from -0.7 to 0.6 percent.

#### **Other information**

Information in this release will be made available to sensory impaired individuals upon request. Voice phone: (202) 691-5200; Federal Relay Service: (800) 877-8339.

# HOUSEHOLD DATA

## Table A-1. Employment status of the civilian population by sex and age

[Numbers in thousands]

Employment status, sex, and age	Not seasonally adjusted			Seasonally adjusted <sup>1</sup>					
	Feb. 2010	Jan. 2011	Feb. 2011	Feb. 2010	Oct. 2010	Nov. 2010	Dec. 2010	Jan. 2011	Feb. 2011
<b>TOTAL</b>									
Civilian noninstitutional population.....	236,998	238,704	238,851	236,998	238,530	238,715	238,889	238,704	238,851
Civilian labor force.....	153,194	152,536	152,635	153,558	153,960	153,950	153,690	153,186	153,246
Participation rate.....	64.6	63.9	63.9	64.8	64.5	64.5	64.3	64.2	64.2
Employed.....	137,203	137,599	138,093	138,698	139,084	138,909	139,206	139,323	139,573
Employment-population ratio.....	57.9	57.6	57.8	58.5	58.3	58.2	58.3	58.4	58.4
Unemployed.....	15,991	14,937	14,542	14,860	14,876	15,041	14,485	13,863	13,673
Unemployment rate.....	10.4	9.8	9.5	9.7	9.7	9.8	9.4	9.0	8.9
Not in labor force.....	83,804	86,168	86,216	83,440	84,570	84,765	85,199	85,518	85,605
Persons who currently want a job.....	6,086	6,643	6,405	6,111	6,279	6,248	6,471	6,410	6,410
<b>Men, 16 years and over</b>									
Civilian noninstitutional population.....	114,735	115,828	115,907	114,735	115,542	115,640	115,731	115,828	115,907
Civilian labor force.....	81,488	81,103	81,360	81,580	82,000	81,986	81,845	81,544	81,720
Participation rate.....	71.0	70.0	70.2	71.1	71.0	70.9	70.7	70.4	70.5
Employed.....	71,566	72,307	72,796	72,884	73,470	73,337	73,600	73,800	74,122
Employment-population ratio.....	62.4	62.4	62.8	63.5	63.6	63.4	63.6	63.7	63.9
Unemployed.....	9,923	8,796	8,564	8,696	8,530	8,649	8,245	7,744	7,598
Unemployment rate.....	12.2	10.8	10.5	10.7	10.4	10.5	10.1	9.5	9.3
Not in labor force.....	33,247	34,725	34,548	33,155	33,542	33,653	33,886	34,284	34,187
<b>Men, 20 years and over</b>									
Civilian noninstitutional population.....	106,100	107,203	107,292	106,100	107,007	107,114	107,216	107,203	107,292
Civilian labor force.....	78,678	78,346	78,672	78,568	79,016	78,980	78,906	78,506	78,795
Participation rate.....	74.2	73.1	73.3	74.1	73.8	73.7	73.6	73.2	73.4
Employed.....	69,606	70,360	70,842	70,707	71,365	71,130	71,480	71,589	71,954
Employment-population ratio.....	65.6	65.6	66.0	66.6	66.7	66.4	66.7	66.8	67.1
Unemployed.....	9,072	7,986	7,829	7,861	7,651	7,849	7,426	6,917	6,841
Unemployment rate.....	11.5	10.2	10.0	10.0	9.7	9.9	9.4	8.8	8.7
Not in labor force.....	27,422	28,857	28,620	27,531	27,991	28,134	28,310	28,698	28,497
<b>Women, 16 years and over</b>									
Civilian noninstitutional population.....	122,263	122,876	122,944	122,263	122,988	123,075	123,158	122,876	122,944
Civilian labor force.....	71,706	71,433	71,275	71,978	71,960	71,964	71,845	71,642	71,526
Participation rate.....	58.6	58.1	58.0	58.9	58.5	58.5	58.3	58.3	58.2
Employed.....	65,638	65,292	65,297	65,813	65,613	65,572	65,605	65,523	65,451
Employment-population ratio.....	53.7	53.1	53.1	53.8	53.3	53.3	53.3	53.3	53.2
Unemployed.....	6,068	6,141	5,978	6,164	6,346	6,392	6,240	6,119	6,075
Unemployment rate.....	8.5	8.6	8.4	8.6	8.8	8.9	8.7	8.5	8.5
Not in labor force.....	50,557	51,443	51,668	50,285	51,028	51,112	51,313	51,234	51,418
<b>Women, 20 years and over</b>									
Civilian noninstitutional population.....	113,886	114,637	114,714	113,886	114,704	114,801	114,894	114,637	114,714
Civilian labor force.....	68,940	68,842	68,728	69,026	69,018	69,151	69,027	68,839	68,802
Participation rate.....	60.5	60.1	59.9	60.6	60.2	60.2	60.1	60.0	60.0
Employed.....	63,459	63,300	63,277	63,516	63,400	63,385	63,428	63,392	63,319
Employment-population ratio.....	55.7	55.2	55.2	55.8	55.3	55.2	55.2	55.3	55.2
Unemployed.....	5,481	5,542	5,451	5,509	5,618	5,766	5,599	5,447	5,483
Unemployment rate.....	8.0	8.1	7.9	8.0	8.1	8.3	8.1	7.9	8.0
Not in labor force.....	44,947	45,795	45,986	44,861	45,687	45,651	45,867	45,798	45,912
<b>Both sexes, 16 to 19 years</b>									
Civilian noninstitutional population.....	17,012	16,863	16,845	17,012	16,819	16,800	16,780	16,863	16,845
Civilian labor force.....	5,577	5,348	5,235	5,964	5,927	5,820	5,757	5,841	5,649
Participation rate.....	32.8	31.7	31.1	35.1	35.2	34.6	34.3	34.6	33.5
Employed.....	4,139	3,939	3,974	4,475	4,319	4,393	4,298	4,341	4,300
Employment-population ratio.....	24.3	23.4	23.6	26.3	25.7	26.2	25.6	25.7	25.5
Unemployed.....	1,438	1,409	1,262	1,490	1,607	1,426	1,460	1,500	1,350
Unemployment rate.....	25.8	26.3	24.1	25.0	27.1	24.5	25.4	25.7	23.9
Not in labor force.....	11,436	11,516	11,610	11,048	10,893	10,980	11,022	11,022	11,196

<sup>1</sup> The population figures are not adjusted for seasonal variation; therefore, identical numbers appear in the unadjusted and seasonally adjusted columns.

NOTE: Updated population controls are introduced annually with the release of January data.

# HOUSEHOLD DATA

## Table A-2. Employment status of the civilian population by race, sex, and age

[Numbers in thousands]

Employment status, race, sex, and age	Not seasonally adjusted			Seasonally adjusted <sup>1</sup>					
	Feb. 2010	Jan. 2011	Feb. 2011	Feb. 2010	Oct. 2010	Nov. 2010	Dec. 2010	Jan. 2011	Feb. 2011
<b>WHITE</b>									
Civilian noninstitutional population.....	191,552	192,516	192,601	191,552	192,527	192,641	192,749	192,516	192,601
Civilian labor force.....	124,790	123,696	123,848	124,957	124,914	124,824	124,700	124,192	124,237
Participation rate.....	65.1	64.3	64.3	65.2	64.9	64.8	64.7	64.5	64.5
Employed.....	112,712	112,754	113,066	113,958	113,975	113,728	114,079	114,197	114,330
Employment-population ratio.....	58.8	58.6	58.7	59.5	59.2	59.0	59.2	59.3	59.4
Unemployed.....	12,079	10,942	10,782	10,999	10,940	11,096	10,620	9,995	9,907
Unemployment rate.....	9.7	8.8	8.7	8.8	8.8	8.9	8.5	8.0	8.0
Not in labor force.....	66,762	68,820	68,752	66,595	67,612	67,817	68,049	68,325	68,364
<b>Men, 20 years and over</b>									
Civilian labor force.....	65,128	64,551	64,866	64,994	65,215	65,088	65,041	64,673	64,919
Participation rate.....	74.7	73.5	73.8	74.6	74.3	74.1	74.0	73.6	73.9
Employed.....	58,183	58,584	58,939	59,104	59,425	59,137	59,484	59,586	59,860
Employment-population ratio.....	66.7	66.7	67.1	67.8	67.7	67.3	67.7	67.8	68.1
Unemployed.....	6,945	5,968	5,926	5,890	5,790	5,951	5,557	5,086	5,059
Unemployment rate.....	10.7	9.2	9.1	9.1	8.9	9.1	8.5	7.9	7.8
<b>Women, 20 years and over</b>									
Civilian labor force.....	55,087	54,728	54,685	55,054	54,846	54,953	54,914	54,686	54,677
Participation rate.....	60.3	59.6	59.6	60.2	59.7	59.7	59.7	59.6	59.5
Employed.....	51,032	50,791	50,772	51,053	50,835	50,817	50,920	50,878	50,816
Employment-population ratio.....	55.8	55.3	55.3	55.9	55.3	55.2	55.3	55.4	55.3
Unemployed.....	4,055	3,937	3,913	4,001	4,012	4,136	3,994	3,808	3,860
Unemployment rate.....	7.4	7.2	7.2	7.3	7.3	7.5	7.3	7.0	7.1
<b>Both sexes, 16 to 19 years</b>									
Civilian labor force.....	4,575	4,417	4,297	4,909	4,853	4,783	4,746	4,833	4,641
Participation rate.....	35.2	34.3	33.4	37.8	37.8	37.3	37.1	37.5	36.1
Employed.....	3,497	3,380	3,354	3,802	3,715	3,775	3,676	3,732	3,654
Employment-population ratio.....	26.9	26.2	26.1	29.3	29.0	29.5	28.7	29.0	28.4
Unemployed.....	1,078	1,037	943	1,108	1,138	1,008	1,070	1,100	987
Unemployment rate.....	23.6	23.5	21.9	22.6	23.4	21.1	22.5	22.8	21.3
<b>BLACK OR AFRICAN AMERICAN</b>									
Civilian noninstitutional population.....	28,559	28,947	28,976	28,559	28,831	28,865	28,896	28,947	28,976
Civilian labor force.....	17,599	17,757	17,680	17,763	17,946	18,020	17,958	17,857	17,865
Participation rate.....	61.6	61.3	61.0	62.2	62.2	62.4	62.1	61.7	61.7
Employed.....	14,752	14,819	14,922	14,952	15,127	15,142	15,119	15,048	15,124
Employment-population ratio.....	51.7	51.2	51.5	52.4	52.5	52.5	52.3	52.0	52.2
Unemployed.....	2,847	2,938	2,758	2,811	2,818	2,878	2,839	2,809	2,741
Unemployment rate.....	16.2	16.5	15.6	15.8	15.7	16.0	15.8	15.7	15.3
Not in labor force.....	10,960	11,190	11,296	10,796	10,885	10,845	10,939	11,090	11,112
<b>Men, 20 years and over</b>									
Civilian labor force.....	7,971	8,070	8,014	7,994	8,072	8,099	8,106	8,054	8,053
Participation rate.....	69.1	68.5	67.9	69.3	69.0	69.1	69.1	68.3	68.2
Employed.....	6,448	6,589	6,608	6,574	6,763	6,753	6,764	6,723	6,745
Employment-population ratio.....	55.9	55.9	56.0	57.0	57.8	57.6	57.6	57.1	57.2
Unemployed.....	1,523	1,481	1,406	1,420	1,309	1,346	1,341	1,331	1,309
Unemployment rate.....	19.1	18.4	17.5	17.8	16.2	16.6	16.5	16.5	16.2
<b>Women, 20 years and over</b>									
Civilian labor force.....	8,995	9,086	9,095	9,076	9,173	9,228	9,204	9,146	9,185
Participation rate.....	62.7	62.5	62.5	63.3	63.3	63.6	63.3	62.9	63.1
Employed.....	7,934	7,911	7,956	7,975	7,998	8,017	7,993	7,966	7,993
Employment-population ratio.....	55.3	54.4	54.6	55.6	55.2	55.2	55.0	54.8	54.9
Unemployed.....	1,062	1,175	1,140	1,101	1,176	1,211	1,211	1,179	1,192
Unemployment rate.....	11.8	12.9	12.5	12.1	12.8	13.1	13.2	12.9	13.0
<b>Both sexes, 16 to 19 years</b>									
Civilian labor force.....	633	601	571	693	700	693	648	658	627
Participation rate.....	23.6	22.9	21.8	25.9	26.5	26.3	24.6	25.1	23.9
Employed.....	371	319	358	403	366	372	361	359	386
Employment-population ratio.....	13.8	12.2	13.7	15.0	13.9	14.1	13.7	13.7	14.7
Unemployed.....	262	282	212	290	334	321	287	299	241
Unemployment rate.....	41.4	46.9	37.2	41.8	47.7	46.3	44.2	45.4	38.4
<b>ASIAN</b>									
Civilian noninstitutional population.....	11,020	11,351	11,345	-	-	-	-	-	-

See footnotes at end of table.

## HOUSEHOLD DATA

**Table A-2. Employment status of the civilian population by race, sex, and age — Continued**

[Numbers in thousands]

Employment status, race, sex, and age	Not seasonally adjusted			Seasonally adjusted <sup>1</sup>					
	Feb. 2010	Jan. 2011	Feb. 2011	Feb. 2010	Oct. 2010	Nov. 2010	Dec. 2010	Jan. 2011	Feb. 2011
Civilian labor force.....	7,074	7,354	7,351	-	-	-	-	-	-
Participation rate.....	64.2	64.8	64.8	-	-	-	-	-	-
Employed.....	6,483	6,846	6,850	-	-	-	-	-	-
Employment-population ratio.....	58.8	60.3	60.4	-	-	-	-	-	-
Unemployed.....	592	509	502	-	-	-	-	-	-
Unemployment rate.....	8.4	6.9	6.8	-	-	-	-	-	-
Not in labor force.....	3,946	3,997	3,994	-	-	-	-	-	-

<sup>1</sup> The population figures are not adjusted for seasonal variation; therefore, identical numbers appear in the unadjusted and seasonally adjusted columns.

- Data not available.

NOTE: Estimates for the above race groups will not sum to totals shown in table A-1 because data are not presented for all races. Updated population controls are introduced annually with the release of January data.

**HOUSEHOLD DATA**

**Table A-3. Employment status of the Hispanic or Latino population by sex and age**

[Numbers in thousands]

Employment status, sex, and age	Not seasonally adjusted			Seasonally adjusted <sup>1</sup>					
	Feb. 2010	Jan. 2011	Feb. 2011	Feb. 2010	Oct. 2010	Nov. 2010	Dec. 2010	Jan. 2011	Feb. 2011
<b>HISPANIC OR LATINO ETHNICITY</b>									
Civilian noninstitutional population.....	33,335	34,001	34,079	33,335	34,014	34,102	34,188	34,001	34,079
Civilian labor force.....	22,582	22,714	22,373	22,639	22,814	22,915	22,868	22,823	22,519
Participation rate.....	67.7	66.8	65.7	67.9	67.1	67.2	66.9	67.1	66.1
Employed.....	19,554	19,711	19,580	19,849	19,936	19,899	19,906	20,099	19,912
Employment-population ratio.....	58.7	58.0	57.5	59.5	58.6	58.4	58.2	59.1	58.4
Unemployed.....	3,027	3,003	2,793	2,791	2,878	3,016	2,962	2,724	2,606
Unemployment rate.....	13.4	13.2	12.5	12.3	12.6	13.2	13.0	11.9	11.6
Not in labor force.....	10,753	11,287	11,706	10,695	11,201	11,188	11,320	11,178	11,561
<b>Men, 20 years and over</b>									
Civilian labor force.....	12,863	12,865	12,844	-	-	-	-	-	-
Participation rate.....	83.0	81.8	81.5	-	-	-	-	-	-
Employed.....	11,128	11,196	11,282	-	-	-	-	-	-
Employment-population ratio.....	71.8	71.2	71.6	-	-	-	-	-	-
Unemployed.....	1,735	1,669	1,562	-	-	-	-	-	-
Unemployment rate.....	13.5	13.0	12.2	-	-	-	-	-	-
<b>Women, 20 years and over</b>									
Civilian labor force.....	8,743	8,892	8,645	-	-	-	-	-	-
Participation rate.....	59.9	59.7	57.9	-	-	-	-	-	-
Employed.....	7,759	7,873	7,685	-	-	-	-	-	-
Employment-population ratio.....	53.1	52.9	51.5	-	-	-	-	-	-
Unemployed.....	984	1,019	960	-	-	-	-	-	-
Unemployment rate.....	11.3	11.5	11.1	-	-	-	-	-	-
<b>Both sexes, 16 to 19 years</b>									
Civilian labor force.....	976	957	884	-	-	-	-	-	-
Participation rate.....	30.2	28.3	26.1	-	-	-	-	-	-
Employed.....	667	642	613	-	-	-	-	-	-
Employment-population ratio.....	20.7	19.0	18.1	-	-	-	-	-	-
Unemployed.....	308	315	271	-	-	-	-	-	-
Unemployment rate.....	31.6	32.9	30.6	-	-	-	-	-	-

1 The population figures are not adjusted for seasonal variation; therefore, identical numbers appear in the unadjusted and seasonally adjusted columns.

- Data not available.

NOTE: Persons whose ethnicity is identified as Hispanic or Latino may be of any race. Updated population controls are introduced annually with the release of January data.

**HOUSEHOLD DATA**

**Table A-4. Employment status of the civilian population 25 years and over by educational attainment**

[Numbers in thousands]

Educational attainment	Not seasonally adjusted			Seasonally adjusted					
	Feb. 2010	Jan. 2011	Feb. 2011	Feb. 2010	Oct. 2010	Nov. 2010	Dec. 2010	Jan. 2011	Feb. 2011
<b>Less than a high school diploma</b>									
Civilian labor force.....	11,415	11,437	11,045	11,561	11,800	11,803	11,758	11,383	11,317
Participation rate.....	45.8	45.3	44.4	46.4	47.0	46.6	46.0	45.1	45.5
Employed.....	9,369	9,545	9,293	9,772	9,995	9,955	9,963	9,770	9,749
Employment-population ratio.....	37.6	37.8	37.4	39.2	39.8	39.3	39.0	38.7	39.2
Unemployed.....	2,046	1,892	1,752	1,789	1,805	1,848	1,795	1,613	1,568
Unemployment rate.....	17.9	16.5	15.9	15.5	15.3	15.7	15.3	14.2	13.9
<b>High school graduates, no college<sup>1</sup></b>									
Civilian labor force.....	39,089	37,747	37,806	38,639	38,051	37,824	38,203	37,513	37,525
Participation rate.....	62.4	60.7	60.7	61.7	61.6	61.1	60.9	60.3	60.3
Employed.....	34,425	33,724	33,750	34,567	34,225	34,035	34,465	33,972	33,965
Employment-population ratio.....	54.9	54.2	54.2	55.2	55.4	55.0	54.9	54.6	54.6
Unemployed.....	4,664	4,023	4,056	4,072	3,826	3,789	3,738	3,541	3,560
Unemployment rate.....	11.9	10.7	10.7	10.5	10.1	10.0	9.8	9.4	9.5
<b>Some college or associate degree</b>									
Civilian labor force.....	36,793	36,701	36,928	36,594	37,120	37,037	36,809	36,841	36,784
Participation rate.....	70.6	70.0	69.7	70.3	70.0	69.8	70.2	70.2	69.5
Employed.....	33,685	33,591	33,916	33,706	33,972	33,832	33,821	33,878	33,919
Employment-population ratio.....	64.7	64.0	64.0	64.7	64.0	63.8	64.5	64.6	64.1
Unemployed.....	3,108	3,109	3,012	2,889	3,148	3,205	2,988	2,963	2,865
Unemployment rate.....	8.4	8.5	8.2	7.9	8.5	8.7	8.1	8.0	7.8
<b>Bachelor's degree and higher<sup>2</sup></b>									
Civilian labor force.....	45,598	46,288	46,520	45,677	46,132	46,322	46,312	46,263	46,591
Participation rate.....	76.8	76.4	76.8	76.9	76.1	76.6	76.9	76.4	76.9
Employed.....	43,313	44,226	44,495	43,436	43,971	43,952	44,095	44,322	44,588
Employment-population ratio.....	73.0	73.0	73.4	73.2	72.6	72.7	73.2	73.2	73.6
Unemployed.....	2,285	2,062	2,025	2,241	2,161	2,370	2,217	1,941	2,003
Unemployment rate.....	5.0	4.5	4.4	4.9	4.7	5.1	4.8	4.2	4.3

1 Includes persons with a high school diploma or equivalent.

2 Includes persons with bachelor's, master's, professional, and doctoral degrees.

NOTE: Updated population controls are introduced annually with the release of January data.

# HOUSEHOLD DATA

**Table A-5. Employment status of the civilian population 18 years and over by veteran status, period of service, and sex, not seasonally adjusted**

[Numbers in thousands]

Employment status, veteran status, and period of service	Total		Men		Women	
	Feb. 2010	Feb. 2011	Feb. 2010	Feb. 2011	Feb. 2010	Feb. 2011
<b>VETERANS, 18 years and over</b>						
Civilian noninstitutional population.....	22,152	21,763	20,376	19,967	1,776	1,796
Civilian labor force.....	11,875	11,427	10,807	10,250	1,068	1,177
Participation rate.....	53.6	52.5	53.0	51.3	60.1	65.5
Employed.....	10,751	10,376	9,767	9,301	983	1,075
Employment-population ratio.....	48.5	47.7	47.9	46.6	55.4	59.8
Unemployed.....	1,124	1,051	1,040	949	85	102
Unemployment rate.....	9.5	9.2	9.6	9.3	7.9	8.7
Not in labor force.....	10,277	10,336	9,569	9,717	708	619
<b>  Gulf War-era II veterans</b>						
Civilian noninstitutional population.....	2,078	2,337	1,747	1,920	331	417
Civilian labor force.....	1,696	1,906	1,464	1,607	232	300
Participation rate.....	81.6	81.6	83.8	83.7	70.1	71.9
Employed.....	1,484	1,667	1,283	1,394	201	274
Employment-population ratio.....	71.4	71.3	73.4	72.6	60.7	65.6
Unemployed.....	212	239	181	213	31	26
Unemployment rate.....	12.5	12.5	12.4	13.3	13.4	8.7
Not in labor force.....	382	431	283	313	99	117
<b>  Gulf War-era I veterans</b>						
Civilian noninstitutional population.....	2,927	2,939	2,507	2,485	420	454
Civilian labor force.....	2,548	2,477	2,226	2,126	322	351
Participation rate.....	87.0	84.3	88.8	85.6	76.6	77.2
Employed.....	2,321	2,280	2,014	1,954	307	326
Employment-population ratio.....	79.3	77.6	80.4	78.6	73.1	71.6
Unemployed.....	226	197	212	172	15	25
Unemployment rate.....	8.9	8.0	9.5	8.1	4.5	7.2
Not in labor force.....	379	462	281	359	98	103
<b>  World War II, Korean War, and Vietnam-era veterans</b>						
Civilian noninstitutional population.....	11,153	10,626	10,782	10,295	372	331
Civilian labor force.....	4,118	3,701	4,001	3,578	117	123
Participation rate.....	36.9	34.8	37.1	34.8	31.4	37.0
Employed.....	3,785	3,385	3,673	3,273	112	112
Employment-population ratio.....	33.9	31.9	34.1	31.8	30.1	33.8
Unemployed.....	332	316	327	305	5	11
Unemployment rate.....	8.1	8.5	8.2	8.5	4.3	8.7
Not in labor force.....	7,036	6,925	6,781	6,717	255	209
<b>  Veterans of other service periods</b>						
Civilian noninstitutional population.....	5,994	5,861	5,341	5,267	653	594
Civilian labor force.....	3,514	3,344	3,116	2,940	397	404
Participation rate.....	58.6	57.0	58.3	55.8	60.9	68.0
Employed.....	3,161	3,044	2,797	2,680	364	364
Employment-population ratio.....	52.7	51.9	52.4	50.9	55.7	61.3
Unemployed.....	353	299	319	259	34	40
Unemployment rate.....	10.1	9.0	10.3	8.8	8.5	9.9
Not in labor force.....	2,480	2,517	2,225	2,328	256	190
<b>NONVETERANS, 18 years and over</b>						
Civilian noninstitutional population.....	205,915	208,204	89,856	91,410	116,059	116,794
Civilian labor force.....	139,527	139,606	69,824	70,315	69,703	69,292
Participation rate.....	67.8	67.1	77.7	76.9	60.1	59.3
Employed.....	125,152	126,562	61,215	62,932	63,936	63,630
Employment-population ratio.....	60.8	60.8	68.1	68.8	55.1	54.5
Unemployed.....	14,375	13,044	8,609	7,382	5,766	5,662
Unemployment rate.....	10.3	9.3	12.3	10.5	8.3	8.2
Not in labor force.....	66,389	68,598	20,032	21,096	46,357	47,502

NOTE: Veterans served on active duty in the U.S. Armed Forces and were not on active duty at the time of the survey. Nonveterans never served on active duty in the U.S. Armed Forces. Veterans could have served anywhere in the world during these periods of service: Gulf War era II (September 2001-present), Gulf War era I (August 1990-August 2001), Vietnam era (August 1964-April 1975), Korean War (July 1950-January 1955), World War II (December 1941-December 1946), and other service periods (all other time periods). Veterans who served in more than one wartime period are classified only in the most recent one. Veterans who served during one of the selected wartime periods and another period are classified only in the wartime period. Updated population controls are introduced annually with the release of January data.



**HOUSEHOLD DATA**

**Table A-6. Employment status of the civilian population by sex, age, and disability status, not seasonally adjusted**

[Numbers in thousands]

Employment status, sex, and age	Persons with a disability		Persons with no disability	
	Feb. 2010	Feb. 2011	Feb. 2010	Feb. 2011
<b>TOTAL, 16 years and over</b>				
Civilian noninstitutional population.....	26,899	27,179	210,100	211,672
Civilian labor force.....	5,887	5,592	147,308	147,043
Participation rate.....	21.9	20.6	70.1	69.5
Employed.....	5,076	4,730	132,127	133,363
Employment-population ratio.....	18.9	17.4	62.9	63.0
Unemployed.....	811	862	15,181	13,680
Unemployment rate.....	13.8	15.4	10.3	9.3
Not in labor force.....	21,012	21,587	62,792	64,629
<b>Men, 16 to 64 years</b>				
Civilian labor force.....	2,741	2,510	75,106	74,988
Participation rate.....	37.6	34.2	82.7	82.2
Employed.....	2,294	2,085	65,913	67,091
Employment-population ratio.....	31.5	28.4	72.6	73.5
Unemployed.....	447	425	9,193	7,897
Unemployment rate.....	16.3	16.9	12.2	10.5
Not in labor force.....	4,545	4,839	15,706	16,280
<b>Women, 16 to 64 years</b>				
Civilian labor force.....	2,329	2,203	66,343	65,944
Participation rate.....	30.9	29.3	71.4	70.7
Employed.....	2,022	1,834	60,809	60,526
Employment-population ratio.....	26.9	24.3	65.4	64.9
Unemployed.....	306	370	5,534	5,418
Unemployment rate.....	13.2	16.8	8.3	8.2
Not in labor force.....	5,199	5,328	26,586	27,357
<b>Both sexes, 65 years and over</b>				
Civilian labor force.....	817	879	5,859	6,110
Participation rate.....	6.8	7.1	22.2	22.5
Employed.....	760	811	5,405	5,746
Employment-population ratio.....	6.3	6.6	20.5	21.2
Unemployed.....	58	67	454	365
Unemployment rate.....	7.1	7.7	7.7	6.0
Not in labor force.....	11,267	11,421	20,500	20,992

NOTE: A person with a disability has at least one of the following conditions: is deaf or has serious difficulty hearing; is blind or has serious difficulty seeing even when wearing glasses; has serious difficulty concentrating, remembering, or making decisions because of a physical, mental, or emotional condition; has serious difficulty walking or climbing stairs; has difficulty dressing or bathing; or has difficulty doing errands alone such as visiting a doctor's office or shopping because of a physical, mental, or emotional condition. Updated population controls are introduced annually with the release of January data.

**HOUSEHOLD DATA**

**Table A-7. Employment status of the civilian population by nativity and sex, not seasonally adjusted**

[Numbers in thousands]

Employment status and nativity	Total		Men		Women	
	Feb. 2010	Feb. 2011	Feb. 2010	Feb. 2011	Feb. 2010	Feb. 2011
<b>Foreign born, 16 years and over</b>						
Civilian noninstitutional population.....	35,315	36,026	17,683	17,781	17,633	18,245
Civilian labor force.....	23,854	23,958	14,098	14,061	9,756	9,897
Participation rate.....	67.5	66.5	79.7	79.1	55.3	54.2
Employed.....	21,102	21,614	12,365	12,673	8,737	8,942
Employment-population ratio.....	59.8	60.0	69.9	71.3	49.5	49.0
Unemployed.....	2,752	2,344	1,734	1,388	1,019	956
Unemployment rate.....	11.5	9.8	12.3	9.9	10.4	9.7
Not in labor force.....	11,461	12,068	3,584	3,720	7,877	8,348
<b>Native born, 16 years and over</b>						
Civilian noninstitutional population.....	201,683	202,825	97,053	98,126	104,630	104,698
Civilian labor force.....	129,341	128,676	67,390	67,299	61,950	61,378
Participation rate.....	64.1	63.4	69.4	68.6	59.2	58.6
Employed.....	116,102	116,478	59,201	60,123	56,901	56,355
Employment-population ratio.....	57.6	57.4	61.0	61.3	54.4	53.8
Unemployed.....	13,239	12,198	8,189	7,176	5,050	5,023
Unemployment rate.....	10.2	9.5	12.2	10.7	8.2	8.2
Not in labor force.....	72,342	74,148	29,663	30,828	42,680	43,321

NOTE: The foreign born are those residing in the United States who were not U.S. citizens at birth. That is, they were born outside the United States or one of its outlying areas such as Puerto Rico or Guam, to parents neither of whom was a U.S. citizen. The native born are persons who were born in the United States or one of its outlying areas such as Puerto Rico or Guam or who were born abroad of at least one parent who was a U.S. citizen. Updated population controls are introduced annually with the release of January data.

## HOUSEHOLD DATA

**Table A-8. Employed persons by class of worker and part-time status**

[In thousands]

Category	Not seasonally adjusted			Seasonally adjusted					
	Feb. 2010	Jan. 2011	Feb. 2011	Feb. 2010	Oct. 2010	Nov. 2010	Dec. 2010	Jan. 2011	Feb. 2011
<b>CLASS OF WORKER</b>									
Agriculture and related industries.....	2,132	2,100	2,097	2,311	2,348	2,185	2,176	2,256	2,255
Wage and salary workers <sup>1</sup> .....	1,261	1,263	1,233	1,360	1,446	1,385	1,384	1,390	1,340
Self-employed workers, unincorporated.....	849	819	849	909	823	771	775	861	889
Unpaid family workers.....	22	18	15	-	-	-	-	-	-
Nonagricultural industries.....	135,071	135,499	135,996	136,527	136,797	136,752	137,001	137,088	137,443
Wage and salary workers <sup>1</sup> .....	126,091	126,882	127,336	127,449	127,852	127,728	128,043	128,151	128,664
Government.....	21,297	20,626	20,985	21,281	20,717	20,600	20,759	20,740	20,933
Private industries.....	104,794	106,255	106,351	106,093	107,100	107,146	107,303	107,409	107,681
Private households.....	666	610	688	-	-	-	-	-	-
Other industries.....	104,127	105,645	105,663	105,387	106,470	106,516	106,665	106,774	106,965
Self-employed workers, unincorporated.....	8,900	8,526	8,573	8,995	8,862	8,832	8,783	8,864	8,688
Unpaid family workers.....	80	91	87	-	-	-	-	-	-
<b>PERSONS AT WORK PART TIME<sup>2</sup></b>									
<b>All industries</b>									
Part time for economic reasons <sup>3</sup> .....	9,282	9,187	8,749	8,793	9,100	8,960	8,931	8,407	8,340
Slack work or business conditions.....	6,708	6,513	6,051	6,188	6,174	6,025	6,011	5,771	5,630
Could only find part-time work.....	2,252	2,373	2,402	2,174	2,564	2,557	2,568	2,510	2,415
Part time for noneconomic reasons <sup>4</sup> .....	18,718	18,048	18,669	18,326	18,230	18,326	18,184	17,929	18,220
<b>Nonagricultural industries</b>									
Part time for economic reasons <sup>3</sup> .....	9,108	9,027	8,633	8,659	8,991	8,822	8,789	8,242	8,248
Slack work or business conditions.....	6,584	6,415	5,974	6,085	6,108	5,941	5,911	5,661	5,558
Could only find part-time work.....	2,237	2,358	2,388	2,169	2,534	2,555	2,542	2,513	2,383
Part time for noneconomic reasons <sup>4</sup> .....	18,387	17,675	18,321	17,987	17,848	17,929	17,829	17,552	17,835

1 Includes self-employed workers whose businesses are incorporated.

2 Refers to those who worked 1 to 34 hours during the survey reference week and excludes employed persons who were absent from their jobs for the entire week.

3 Refers to those who worked 1 to 34 hours during the reference week for an economic reason such as slack work or unfavorable business conditions, inability to find full-time work, or seasonal declines in demand.

4 Refers to persons who usually work part time for noneconomic reasons such as childcare problems, family or personal obligations, school or training, retirement or Social Security limits on earnings, and other reasons. This excludes persons who usually work full time but worked only 1 to 34 hours during the reference week for reasons such as vacations, holidays, illness, and bad weather.

- Data not available.

NOTE: Detail for the seasonally adjusted data shown in this table will not necessarily add to totals because of the independent seasonal adjustment of the various series. Updated population controls are introduced annually with the release of January data.

# HOUSEHOLD DATA

## Table A-9. Selected employment indicators

[Numbers in thousands]

Characteristic	Not seasonally adjusted			Seasonally adjusted					
	Feb. 2010	Jan. 2011	Feb. 2011	Feb. 2010	Oct. 2010	Nov. 2010	Dec. 2010	Jan. 2011	Feb. 2011
<b>AGE AND SEX</b>									
Total, 16 years and over.....	137,203	137,599	138,093	138,698	139,084	138,909	139,206	139,323	139,573
16 to 19 years.....	4,139	3,939	3,974	4,475	4,319	4,393	4,298	4,341	4,300
16 to 17 years.....	1,301	1,225	1,155	1,453	1,434	1,440	1,434	1,406	1,311
18 to 19 years.....	2,838	2,713	2,819	3,039	2,894	2,961	2,869	2,939	3,000
20 years and over.....	133,064	133,660	134,119	134,223	134,764	134,515	134,908	134,982	135,274
20 to 24 years.....	12,273	12,573	12,664	12,575	12,774	12,774	12,713	12,941	12,954
25 years and over.....	120,792	121,087	121,455	121,557	121,910	121,744	122,196	122,026	122,245
25 to 54 years.....	93,348	92,980	93,017	94,047	94,011	93,723	93,962	93,758	93,764
25 to 34 years.....	29,831	30,065	30,110	30,138	30,323	30,214	30,345	30,438	30,412
35 to 44 years.....	30,375	30,107	30,156	30,607	30,650	30,527	30,447	30,373	30,409
45 to 54 years.....	33,142	32,807	32,751	33,302	33,037	32,982	33,170	32,946	32,943
55 years and over.....	27,444	28,106	28,437	27,510	27,899	28,021	28,234	28,268	28,481
Men, 16 years and over.....	71,566	72,307	72,796	72,884	73,470	73,337	73,600	73,800	74,122
16 to 19 years.....	1,960	1,947	1,953	2,177	2,106	2,206	2,121	2,211	2,168
16 to 17 years.....	583	608	562	686	660	688	695	717	668
18 to 19 years.....	1,377	1,339	1,391	1,489	1,443	1,524	1,420	1,471	1,495
20 years and over.....	69,606	70,360	70,842	70,707	71,365	71,130	71,480	71,589	71,954
20 to 24 years.....	6,116	6,484	6,513	6,314	6,542	6,502	6,568	6,784	6,715
25 years and over.....	63,490	63,876	64,329	64,361	64,803	64,617	64,904	64,789	65,179
25 to 54 years.....	49,198	49,251	49,491	49,947	50,209	49,970	50,117	50,005	50,247
25 to 34 years.....	15,992	16,254	16,347	16,298	16,434	16,331	16,428	16,542	16,627
35 to 44 years.....	16,218	16,148	16,240	16,437	16,573	16,543	16,522	16,394	16,477
45 to 54 years.....	16,988	16,849	16,904	17,213	17,202	17,096	17,168	17,070	17,143
55 years and over.....	14,292	14,625	14,839	14,414	14,594	14,648	14,787	14,784	14,932
Women, 16 years and over.....	65,638	65,292	65,297	65,813	65,613	65,572	65,605	65,523	65,451
16 to 19 years.....	2,179	1,992	2,021	2,297	2,214	2,187	2,177	2,130	2,132
16 to 17 years.....	718	617	593	767	774	752	739	689	644
18 to 19 years.....	1,461	1,374	1,428	1,550	1,452	1,437	1,449	1,468	1,506
20 years and over.....	63,459	63,300	63,277	63,516	63,400	63,385	63,428	63,392	63,319
20 to 24 years.....	6,157	6,090	6,151	6,260	6,232	6,272	6,145	6,157	6,239
25 years and over.....	57,302	57,210	57,125	57,196	57,106	57,127	57,292	57,237	57,065
25 to 54 years.....	44,150	43,729	43,527	44,100	43,801	43,753	43,845	43,752	43,517
25 to 34 years.....	13,839	13,811	13,764	13,840	13,889	13,883	13,917	13,897	13,785
35 to 44 years.....	14,157	13,959	13,916	14,170	14,077	13,983	13,925	13,979	13,931
45 to 54 years.....	16,154	15,959	15,847	16,089	15,836	15,887	16,003	15,877	15,800
55 years and over.....	13,152	13,481	13,598	13,096	13,305	13,374	13,447	13,485	13,549
<b>MARITAL STATUS</b>									
Married men, spouse present.....	42,951	42,492	42,658	43,210	43,301	43,130	43,081	42,915	42,957
Married women, spouse present.....	35,286	34,615	34,579	35,207	34,553	34,543	34,612	34,571	34,496
Women who maintain families.....	8,445	8,686	8,499	-	-	-	-	-	-
<b>FULL- OR PART-TIME STATUS</b>									
Full-time workers <sup>1</sup> .....	109,100	110,373	110,731	111,013	111,585	111,187	111,744	112,356	112,660
Part-time workers <sup>2</sup> .....	28,103	27,226	27,361	27,514	27,433	27,594	27,394	26,901	26,878
<b>MULTIPLE JOBHOLDERS</b>									
Total multiple jobholders.....	7,161	6,621	6,882	7,041	6,679	6,734	6,950	6,840	6,764
Percent of total employed.....	5.2	4.8	5.0	5.1	4.8	4.8	5.0	4.9	4.8
<b>SELF-EMPLOYMENT</b>									
Self-employed workers, incorporated.....	5,356	5,208	5,221	-	-	-	-	-	-
Self-employed workers, unincorporated.....	9,749	9,345	9,421	9,905	9,684	9,603	9,559	9,724	9,577

1 Employed full-time workers are persons who usually work 35 hours or more per week.

2 Employed part-time workers are persons who usually work less than 35 hours per week.

- Data not available.

NOTE: Detail for the seasonally adjusted data shown in this table will not necessarily add to totals because of the independent seasonal adjustment of the various series. Updated population controls are introduced annually with the release of January data.

# HOUSEHOLD DATA

## Table A-10. Selected unemployment indicators, seasonally adjusted

Characteristic	Number of unemployed persons (in thousands)			Unemployment rates					
	Feb. 2010	Jan. 2011	Feb. 2011	Feb. 2010	Oct. 2010	Nov. 2010	Dec. 2010	Jan. 2011	Feb. 2011
<b>AGE AND SEX</b>									
Total, 16 years and over.....	14,860	13,863	13,673	9.7	9.7	9.8	9.4	9.0	8.9
16 to 19 years.....	1,490	1,500	1,350	25.0	27.1	24.5	25.4	25.7	23.9
16 to 17 years.....	579	541	531	28.5	30.3	24.9	27.1	27.8	28.8
18 to 19 years.....	941	960	820	23.6	24.7	24.2	24.5	24.6	21.5
20 years and over.....	13,370	12,363	12,323	9.1	9.0	9.2	8.8	8.4	8.3
20 to 24 years.....	2,379	2,315	2,352	15.9	15.3	15.9	15.3	15.2	15.4
25 years and over.....	10,995	10,028	10,013	8.3	8.2	8.4	8.1	7.6	7.6
25 to 54 years.....	8,873	8,036	8,049	8.6	8.5	8.7	8.5	7.9	7.9
25 to 34 years.....	3,284	3,112	3,146	9.8	9.9	10.4	10.1	9.3	9.4
35 to 44 years.....	2,915	2,416	2,436	8.7	7.9	7.7	7.8	7.4	7.4
45 to 54 years.....	2,674	2,507	2,467	7.4	7.8	8.1	7.5	7.1	7.0
55 years and over.....	2,106	2,022	1,962	7.1	7.2	7.2	6.9	6.7	6.4
Men, 16 years and over.....	8,696	7,744	7,598	10.7	10.4	10.5	10.1	9.5	9.3
16 to 19 years.....	835	827	757	27.7	29.4	26.6	27.8	27.2	25.9
16 to 17 years.....	304	295	267	30.7	33.8	28.5	29.0	29.1	28.5
18 to 19 years.....	559	533	493	27.3	26.8	25.5	27.4	26.6	24.8
20 years and over.....	7,861	6,917	6,841	10.0	9.7	9.9	9.4	8.8	8.7
20 to 24 years.....	1,434	1,281	1,315	18.5	16.5	18.1	16.9	15.9	16.4
25 years and over.....	6,429	5,648	5,565	9.1	8.9	9.0	8.6	8.0	7.9
25 to 54 years.....	5,217	4,511	4,428	9.5	9.1	9.3	8.9	8.3	8.1
25 to 34 years.....	1,975	1,790	1,743	10.8	10.4	10.9	10.6	9.8	9.5
35 to 44 years.....	1,687	1,344	1,327	9.3	8.2	7.9	7.9	7.6	7.5
45 to 54 years.....	1,555	1,377	1,358	8.3	8.6	9.2	8.3	7.5	7.3
55 years and over.....	1,213	1,137	1,137	7.8	8.3	8.0	7.2	7.1	7.1
Women, 16 years and over.....	6,164	6,119	6,075	8.6	8.8	8.9	8.7	8.5	8.5
16 to 19 years.....	655	673	593	22.2	24.8	22.3	22.8	24.0	21.8
16 to 17 years.....	276	247	264	26.4	27.0	21.2	25.2	26.4	29.1
18 to 19 years.....	381	427	327	19.7	22.6	22.8	21.5	22.5	17.8
20 years and over.....	5,509	5,447	5,483	8.0	8.1	8.3	8.1	7.9	8.0
20 to 24 years.....	946	1,033	1,036	13.1	13.9	13.5	13.5	14.4	14.2
25 years and over.....	4,565	4,380	4,448	7.4	7.5	7.7	7.5	7.1	7.2
25 to 54 years.....	3,657	3,525	3,621	7.7	7.9	8.1	7.9	7.5	7.7
25 to 34 years.....	1,309	1,323	1,403	8.6	9.4	9.8	9.5	8.7	9.2
35 to 44 years.....	1,228	1,072	1,109	8.0	7.5	7.5	7.6	7.1	7.4
45 to 54 years.....	1,119	1,130	1,109	6.5	6.9	6.9	6.6	6.6	6.6
55 years and over <sup>1</sup> .....	911	906	825	6.5	5.9	6.2	5.8	6.3	5.7
<b>MARITAL STATUS</b>									
Married men, spouse present.....	3,173	2,666	2,641	6.8	6.9	6.9	6.6	5.8	5.8
Married women, spouse present.....	2,272	2,036	1,964	6.1	5.7	5.8	5.6	5.6	5.4
Women who maintain families <sup>1</sup> .....	1,112	1,268	1,273	11.6	12.4	13.0	12.0	12.7	13.0
<b>FULL- OR PART-TIME STATUS</b>									
Full-time workers <sup>2</sup> .....	13,070	12,063	11,798	10.5	10.5	10.7	10.2	9.7	9.5
Part-time workers <sup>3</sup> .....	1,835	1,793	1,873	6.3	6.3	5.8	6.0	6.2	6.5

1 Not seasonally adjusted.

2 Full-time workers are unemployed persons who have expressed a desire to work full time (35 hours or more per week) or are on layoff from full-time jobs.

3 Part-time workers are unemployed persons who have expressed a desire to work part time (less than 35 hours per week) or are on layoff from part-time jobs.

NOTE: Detail for the seasonally adjusted data shown in this table will not necessarily add to totals because of the independent seasonal adjustment of the various series. Updated population controls are introduced annually with the release of January data.

**HOUSEHOLD DATA**

**Table A-11. Unemployed persons by reason for unemployment**

[Numbers in thousands]

Reason	Not seasonally adjusted			Seasonally adjusted					
	Feb. 2010	Jan. 2011	Feb. 2011	Feb. 2010	Oct. 2010	Nov. 2010	Dec. 2010	Jan. 2011	Feb. 2011
<b>NUMBER OF UNEMPLOYED</b>									
Job losers and persons who completed temporary jobs.....	10,664	9,520	9,212	9,493	9,070	9,471	8,923	8,519	8,334
On temporary layoff.....	2,100	1,825	1,718	1,541	1,293	1,430	1,402	1,249	1,270
Not on temporary layoff.....	8,564	7,695	7,495	7,953	7,777	8,042	7,521	7,270	7,064
Permanent job losers.....	7,129	6,097	6,005	6,636	6,254	6,425	5,995	5,879	5,671
Persons who completed temporary jobs.....	1,435	1,599	1,489	1,317	1,523	1,617	1,526	1,391	1,393
Job leavers.....	874	935	888	878	854	864	914	910	898
Reentrants.....	3,449	3,332	3,338	3,444	3,498	3,427	3,408	3,357	3,352
New entrants.....	1,005	1,150	1,103	1,220	1,278	1,269	1,311	1,351	1,337
<b>PERCENT DISTRIBUTION</b>									
Job losers and persons who completed temporary jobs.....	66.7	63.7	63.4	63.1	61.7	63.0	61.3	60.3	59.9
On temporary layoff.....	13.1	12.2	11.8	10.2	8.8	9.5	9.6	8.8	9.1
Not on temporary layoff.....	53.6	51.5	51.5	52.9	52.9	53.5	51.7	51.4	50.7
Job leavers.....	5.5	6.3	6.1	5.8	5.8	5.8	6.3	6.4	6.4
Reentrants.....	21.6	22.3	23.0	22.9	23.8	22.8	23.4	23.7	24.1
New entrants.....	6.3	7.7	7.6	8.1	8.7	8.4	9.0	9.6	9.6
<b>UNEMPLOYED AS A PERCENT OF THE CIVILIAN LABOR FORCE</b>									
Job losers and persons who completed temporary jobs.....	7.0	6.2	6.0	6.2	5.9	6.2	5.8	5.6	5.4
Job leavers.....	0.6	0.6	0.6	0.6	0.6	0.6	0.6	0.6	0.6
Reentrants.....	2.3	2.2	2.2	2.2	2.3	2.2	2.2	2.2	2.2
New entrants.....	0.7	0.8	0.7	0.8	0.8	0.8	0.9	0.9	0.9

NOTE: Updated population controls are introduced annually with the release of January data.

## HOUSEHOLD DATA

### Table A-12. Unemployed persons by duration of unemployment

[Numbers in thousands]

Duration	Not seasonally adjusted			Seasonally adjusted					
	Feb. 2010	Jan. 2011	Feb. 2011	Feb. 2010	Oct. 2010	Nov. 2010	Dec. 2010	Jan. 2011	Feb. 2011
<b>NUMBER OF UNEMPLOYED</b>									
Less than 5 weeks.....	2,607	3,181	2,263	2,729	2,659	2,824	2,725	2,678	2,390
5 to 14 weeks.....	4,139	3,267	3,801	3,380	3,427	3,336	3,184	3,016	3,094
15 weeks and over.....	9,245	8,489	8,478	8,834	8,734	8,843	8,647	8,495	8,172
15 to 26 weeks.....	2,959	2,182	2,420	2,703	2,500	2,515	2,205	2,285	2,179
27 weeks and over.....	6,286	6,307	6,058	6,131	6,234	6,328	6,441	6,210	5,993
Average (mean) duration, in weeks <sup>1</sup> .....	29.3	35.5	36.7	29.8	33.9	33.9	34.2	36.9	37.1
Median duration, in weeks.....	19.6	19.9	20.6	19.6	21.3	21.7	22.4	21.8	21.2
<b>PERCENT DISTRIBUTION</b>									
Less than 5 weeks.....	16.3	21.3	15.6	18.3	17.9	18.8	18.7	18.9	17.5
5 to 14 weeks.....	25.9	21.9	26.1	22.6	23.1	22.2	21.9	21.3	22.7
15 weeks and over.....	57.8	56.8	58.3	59.1	58.9	58.9	59.4	59.9	59.8
15 to 26 weeks.....	18.5	14.6	16.6	18.1	16.9	16.8	15.2	16.1	16.0
27 weeks and over.....	39.3	42.2	41.7	41.0	42.1	42.2	44.3	43.8	43.9

<sup>1</sup> Beginning in January 2011, this series reflects a change to the collection of data on unemployment duration. For more information, see [www.bls.gov/cps/duration.htm](http://www.bls.gov/cps/duration.htm).

NOTE: Updated population controls are introduced annually with the release of January data.

**HOUSEHOLD DATA**

**Table A-13. Employed and unemployed persons by occupation, not seasonally adjusted**

[Numbers in thousands]

Occupation	Employed		Unemployed		Unemployment rates	
	Feb. 2010	Feb. 2011	Feb. 2010	Feb. 2011	Feb. 2010	Feb. 2011
Total, 16 years and over <sup>1</sup> .....	137,203	138,093	15,991	14,542	10.4	9.5
Management, professional, and related occupations.....	52,324	52,557	2,637	2,435	4.8	4.4
Management, business, and financial operations occupations.....	21,573	21,256	1,165	1,089	5.1	4.9
Professional and related occupations.....	30,752	31,301	1,471	1,346	4.6	4.1
Service occupations.....	24,133	23,758	2,878	2,846	10.7	10.7
Sales and office occupations.....	33,118	33,220	3,465	3,180	9.5	8.7
Sales and related occupations.....	15,081	15,367	1,704	1,523	10.2	9.0
Office and administrative support occupations.....	18,037	17,853	1,761	1,657	8.9	8.5
Natural resources, construction, and maintenance occupations.....	12,407	12,676	3,259	2,568	20.8	16.8
Farming, fishing, and forestry occupations.....	856	911	252	255	22.7	21.9
Construction and extraction occupations.....	6,819	6,868	2,457	1,938	26.5	22.0
Installation, maintenance, and repair occupations.....	4,732	4,897	549	374	10.4	7.1
Production, transportation, and material moving occupations.....	15,220	15,882	2,720	2,356	15.2	12.9
Production occupations.....	7,404	7,908	1,343	1,105	15.4	12.3
Transportation and material moving occupations.....	7,816	7,973	1,377	1,251	15.0	13.6

<sup>1</sup> Persons with no previous work experience and persons whose last job was in the U.S. Armed Forces are included in the unemployed total.

NOTE: Updated population controls are introduced annually with the release of January data. Effective with January 2011 data, occupations reflect the introduction of the 2010 Census occupational classification system into the Current Population Survey, or household survey. This classification system is derived from the 2010 Standard Occupational Classification (SOC). No historical data have been revised. Data for 2011 are not strictly comparable with earlier years.



**HOUSEHOLD DATA**

**Table A-14. Unemployed persons by industry and class of worker, not seasonally adjusted**

Industry and class of worker	Number of unemployed persons (in thousands)		Unemployment rates	
	Feb. 2010	Feb. 2011	Feb. 2010	Feb. 2011
Total, 16 years and over <sup>1</sup> .....	15,991	14,542	10.4	9.5
Nonagricultural private wage and salary workers.....	13,142	11,641	11.1	9.9
Mining, quarrying, and oil and gas extraction.....	79	41	10.7	5.6
Construction.....	2,440	1,883	27.1	21.8
Manufacturing.....	1,814	1,492	12.1	9.9
Durable goods.....	1,276	989	13.6	10.5
Nondurable goods.....	538	503	9.7	8.9
Wholesale and retail trade.....	2,071	1,889	10.0	9.2
Transportation and utilities.....	591	499	10.5	9.0
Information.....	300	205	10.0	6.7
Financial activities.....	708	636	7.5	6.9
Professional and business services.....	1,740	1,469	12.0	10.1
Education and health services.....	1,200	1,198	5.6	5.6
Leisure and hospitality.....	1,597	1,783	12.7	13.8
Other services.....	603	546	9.9	8.9
Agriculture and related private wage and salary workers.....	285	270	18.8	18.4
Government workers.....	880	927	4.0	4.2
Self-employed workers, unincorporated, and unpaid family workers.....	680	601	6.5	5.9

<sup>1</sup> Persons with no previous work experience and persons whose last job was in the U.S. Armed Forces are included in the unemployed total.

NOTE: Updated population controls are introduced annually with the release of January data.

**HOUSEHOLD DATA**

**Table A-15. Alternative measures of labor underutilization**

[Percent]

Measure	Not seasonally adjusted			Seasonally adjusted					
	Feb. 2010	Jan. 2011	Feb. 2011	Feb. 2010	Oct. 2010	Nov. 2010	Dec. 2010	Jan. 2011	Feb. 2011
U-1 Persons unemployed 15 weeks or longer, as a percent of the civilian labor force.....	6.0	5.6	5.6	5.8	5.7	5.7	5.6	5.5	5.3
U-2 Job losers and persons who completed temporary jobs, as a percent of the civilian labor force.....	7.0	6.2	6.0	6.2	5.9	6.2	5.8	5.6	5.4
U-3 Total unemployed, as a percent of the civilian labor force (official unemployment rate).....	10.4	9.8	9.5	9.7	9.7	9.8	9.4	9.0	8.9
U-4 Total unemployed plus discouraged workers, as a percent of the civilian labor force plus discouraged workers.....	11.1	10.4	10.1	10.4	10.4	10.5	10.2	9.6	9.5
U-5 Total unemployed, plus discouraged workers, plus all other persons marginally attached to the labor force, as a percent of the civilian labor force plus all persons marginally attached to the labor force.....	11.9	11.4	11.1	11.1	11.2	11.2	10.9	10.7	10.5
U-6 Total unemployed, plus all persons marginally attached to the labor force, plus total employed part time for economic reasons, as a percent of the civilian labor force plus all persons marginally attached to the labor force.....	17.9	17.3	16.7	16.8	17.0	17.0	16.7	16.1	15.9

NOTE: Persons marginally attached to the labor force are those who currently are neither working nor looking for work but indicate that they want and are available for a job and have looked for work sometime in the past 12 months. Discouraged workers, a subset of the marginally attached, have given a job-market related reason for not currently looking for work. Persons employed part time for economic reasons are those who want and are available for full-time work but have had to settle for a part-time schedule. Updated population controls are introduced annually with the release of January data.

**HOUSEHOLD DATA**

**Table A-16. Persons not in the labor force and multiple jobholders by sex, not seasonally adjusted**

[Numbers in thousands]

Category	Total		Men		Women	
	Feb. 2010	Feb. 2011	Feb. 2010	Feb. 2011	Feb. 2010	Feb. 2011
<b>NOT IN THE LABOR FORCE</b>						
Total not in the labor force.....	83,804	86,216	33,247	34,548	50,557	51,668
Persons who currently want a job.....	6,086	6,405	2,974	3,036	3,113	3,369
Marginally attached to the labor force <sup>1</sup> .....	2,527	2,730	1,433	1,447	1,094	1,283
Discouraged workers <sup>2</sup> .....	1,204	1,020	762	592	442	427
Other persons marginally attached to the labor force <sup>3</sup> .....	1,323	1,710	671	854	652	855
<b>MULTIPLE JOBHOLDERS</b>						
Total multiple jobholders <sup>4</sup> .....	7,161	6,882	3,454	3,364	3,707	3,518
Percent of total employed.....	5.2	5.0	4.8	4.6	5.6	5.4
Primary job full time, secondary job part time.....	3,735	3,573	2,027	1,964	1,708	1,609
Primary and secondary jobs both part time.....	1,842	1,855	546	618	1,296	1,236
Primary and secondary jobs both full time.....	290	222	181	142	108	80
Hours vary on primary or secondary job.....	1,271	1,197	684	628	587	569

1 Data refer to persons who want a job, have searched for work during the prior 12 months, and were available to take a job during the reference week, but had not looked for work in the past 4 weeks.

2 Includes those who did not actively look for work in the prior 4 weeks for reasons such as thinks no work available, could not find work, lacks schooling or training, employer thinks too young or old, and other types of discrimination.

3 Includes those who did not actively look for work in the prior 4 weeks for such reasons as school or family responsibilities, ill health, and transportation problems, as well as a number for whom reason for nonparticipation was not determined.

4 Includes a small number of persons who work part time on their primary job and full time on their secondary job(s), not shown separately.

NOTE: Updated population controls are introduced annually with the release of January data.

**ESTABLISHMENT DATA**

**Table B-1. Employees on nonfarm payrolls by industry sector and selected industry detail**

[In thousands]

Industry	Not seasonally adjusted				Seasonally adjusted				Change from: Jan.2011 - Feb.2011 <sup>P</sup>
	Feb. 2010	Dec. 2010	Jan. 2011 <sup>P</sup>	Feb. 2011 <sup>P</sup>	Feb. 2010	Dec. 2010	Jan. 2011 <sup>P</sup>	Feb. 2011 <sup>P</sup>	
Total nonfarm.....	127,746	131,050	128,183	128,999	129,246	130,260	130,323	130,515	192
Total private.....	104,981	108,464	106,076	106,503	106,772	108,008	108,076	108,298	222
Goods-producing.....	17,087	17,714	17,299	17,326	17,667	17,797	17,832	17,902	70
Mining and logging.....	659	733	724	727	672	734	738	742	4
Logging.....	48.1	46.9	46.8	47.5	49.0	47.2	48.0	48.4	0.4
Mining.....	610.7	686.1	676.7	679.4	623.1	686.7	689.6	693.3	3.7
Oil and gas extraction.....	155.3	161.4	162.4	163.0	156.2	161.6	163.1	164.0	0.9
Mining, except oil and gas <sup>1</sup> .....	189.8	201.7	195.1	195.8	199.8	205.6	204.8	205.7	0.9
Coal mining.....	78.6	83.8	83.2	83.1	78.6	83.2	83.1	83.2	0.1
Support activities for mining.....	265.6	323.0	319.2	320.6	267.1	319.5	321.7	323.6	1.9
Construction.....	5,088	5,387	5,065	5,070	5,533	5,498	5,476	5,509	33
Construction of buildings.....	1,162.7	1,215.1	1,156.6	1,144.9	1,234.9	1,222.1	1,218.2	1,218.4	0.2
Residential building.....	545.8	558.6	527.8	526.0	584.3	563.0	562.1	564.3	2.2
Nonresidential building.....	616.9	656.5	628.8	618.9	650.6	659.1	656.1	654.1	-2.0
Heavy and civil engineering construction.....	699.1	792.6	721.8	724.4	808.6	834.2	830.7	835.2	4.5
Specialty trade contractors.....	3,226.5	3,379.1	3,187.0	3,201.0	3,489.2	3,441.2	3,427.2	3,454.9	27.7
Residential specialty trade contractors.....	1,382.8	1,410.1	1,337.7	1,342.0	1,505.4	1,441.9	1,448.6	1,459.6	11.0
Nonresidential specialty trade contractors.....	1,843.7	1,969.0	1,849.3	1,859.0	1,983.8	1,999.3	1,978.6	1,995.3	16.7
Manufacturing.....	11,340	11,594	11,510	11,529	11,462	11,565	11,618	11,651	33
Durable goods.....	6,932	7,146	7,132	7,154	6,994	7,126	7,187	7,217	30
Wood products.....	330.8	335.7	332.3	333.7	342.5	337.4	341.2	344.3	3.1
Nonmetallic mineral products.....	353.9	362.7	351.9	352.7	373.4	367.5	370.0	371.9	1.9
Primary metals.....	349.4	368.8	368.7	371.1	350.7	368.2	369.8	373.3	3.5
Fabricated metal products.....	1,245.7	1,316.1	1,318.1	1,318.9	1,255.0	1,312.5	1,323.6	1,330.4	6.8
Machinery.....	973.8	1,013.6	1,016.1	1,024.4	976.9	1,010.2	1,019.6	1,028.8	9.2
Computer and electronic products <sup>1</sup> .....	1,090.9	1,114.2	1,114.9	1,115.3	1,093.5	1,111.1	1,116.1	1,117.4	1.3
Computer and peripheral equipment.....	158.7	166.4	167.4	169.9	159.1	166.1	167.9	170.3	2.4
Communication equipment.....	116.8	119.5	119.6	117.8	116.0	119.0	119.2	117.3	-1.9
Semiconductors and electronic components.....	364.1	376.6	377.6	378.3	365.3	375.5	377.8	379.2	1.4
Electronic instruments.....	406.3	406.8	405.7	404.3	407.6	406.2	406.6	405.7	-0.9
Electrical equipment and appliances.....	353.8	368.5	368.3	367.8	355.0	367.7	368.8	369.0	0.2
Transportation equipment <sup>1</sup> .....	1,313.3	1,340.5	1,343.7	1,350.3	1,317.9	1,329.8	1,351.7	1,355.1	3.4
Motor vehicles and parts <sup>2</sup> .....	660.8	683.5	687.0	693.3	662.2	674.2	694.2	695.2	1.0
Furniture and related products.....	356.1	349.4	346.6	346.4	360.9	350.3	352.3	351.7	-0.6
Miscellaneous manufacturing.....	564.3	576.5	571.4	573.5	567.7	571.2	574.0	575.0	1.0
Nondurable goods.....	4,408	4,448	4,378	4,375	4,468	4,439	4,431	4,434	3
Food manufacturing.....	1,413.8	1,453.7	1,421.2	1,416.1	1,447.8	1,444.9	1,444.6	1,448.3	3.7
Beverages and tobacco products.....	176.9	180.0	174.8	175.2	183.0	182.4	179.8	181.5	1.7
Textile mills.....	119.0	119.5	118.7	119.6	119.9	119.8	119.8	120.4	0.6
Textile product mills.....	118.1	116.8	114.7	114.3	119.7	116.3	115.5	115.7	0.2
Apparel.....	160.5	156.6	155.0	156.8	161.0	157.6	158.1	156.9	-1.2
Leather and allied products.....	27.3	28.5	27.8	28.9	27.7	28.5	28.2	29.0	0.8
Paper and paper products.....	395.6	397.6	395.9	395.2	397.4	396.8	396.3	396.7	0.4
Printing and related support activities.....	490.4	479.2	469.2	467.9	493.6	476.2	473.6	471.3	-2.3
Petroleum and coal products.....	108.5	110.8	105.1	106.7	113.4	113.0	111.3	112.1	0.8
Chemicals.....	787.3	780.5	771.0	772.3	788.8	777.5	773.4	774.0	0.6
Plastics and rubber products.....	610.3	624.3	624.4	622.2	615.9	626.1	630.4	628.3	-2.1
Private service-providing.....	87,894	90,750	88,777	89,177	89,105	90,211	90,244	90,396	152
Trade, transportation, and utilities.....	24,147	25,322	24,543	24,391	24,525	24,746	24,740	24,767	27
Wholesale trade.....	5,390.8	5,495.5	5,438.7	5,448.4	5,443.1	5,479.5	5,489.0	5,500.7	11.7
Durable goods.....	2,693.2	2,742.1	2,723.6	2,732.3	2,712.1	2,736.0	2,742.7	2,752.4	9.7
Nondurable goods.....	1,902.2	1,941.3	1,912.1	1,913.7	1,930.5	1,935.5	1,938.8	1,940.3	1.5
Electronic markets and agents and brokers.....	795.4	812.1	803.0	802.4	800.5	808.0	807.5	808.0	0.5
Retail trade.....	14,117.4	14,939.3	14,378.4	14,203.8	14,383.5	14,447.2	14,477.8	14,469.7	-8.1
Motor vehicle and parts dealers <sup>1</sup> .....	1,586.3	1,638.2	1,622.4	1,631.9	1,611.7	1,648.1	1,652.1	1,656.8	4.7
Automobile dealers.....	991.1	1,019.3	1,011.6	1,017.2	1,000.8	1,021.4	1,024.1	1,026.4	2.3
Furniture and home furnishings stores.....	432.2	456.9	439.8	428.2	437.5	435.8	435.3	434.2	-1.1

See footnotes at end of table.

**ESTABLISHMENT DATA**

**Table B-1. Employees on nonfarm payrolls by industry sector and selected industry detail**

— Continued

[In thousands]

Industry	Not seasonally adjusted				Seasonally adjusted				Change from: Jan.2011 - Feb.2011 <sup>P</sup>
	Feb. 2010	Dec. 2010	Jan. 2011 <sup>P</sup>	Feb. 2011 <sup>P</sup>	Feb. 2010	Dec. 2010	Jan. 2011 <sup>P</sup>	Feb. 2011 <sup>P</sup>	
<b>Retail trade - Continued</b>									
Electronics and appliance stores.....	489.9	529.0	504.6	492.9	491.0	503.2	500.2	495.5	-4.7
Building material and garden supply stores...	1,092.2	1,082.5	1,061.0	1,066.4	1,137.5	1,112.0	1,114.0	1,108.4	-5.6
Food and beverage stores.....	2,779.3	2,840.7	2,802.4	2,785.3	2,807.7	2,814.1	2,816.4	2,814.0	-2.4
Health and personal care stores.....	976.9	988.4	970.8	971.4	981.4	970.9	972.2	975.3	3.1
Gasoline stations.....	802.7	811.3	803.5	800.2	815.1	816.1	814.6	812.6	-2.0
Clothing and clothing accessories stores.....	1,308.1	1,533.8	1,413.0	1,365.2	1,357.2	1,405.4	1,414.0	1,417.4	3.4
Sporting goods, hobby, book, and music stores.....	595.7	657.9	617.7	594.3	604.5	601.5	601.6	601.6	0.0
General merchandise stores <sup>1</sup> .....	2,891.5	3,181.8	2,982.8	2,918.6	2,960.4	2,972.8	2,985.6	2,986.7	1.1
Department stores.....	1,444.3	1,651.2	1,513.9	1,450.4	1,482.7	1,484.2	1,493.4	1,488.9	-4.5
Miscellaneous store retailers.....	755.7	774.3	743.9	742.5	765.5	753.9	756.2	752.1	-4.1
Nonstore retailers.....	406.9	444.5	416.5	406.9	414.0	413.4	415.6	415.1	-0.5
Transportation and warehousing.....	4,085.5	4,338.1	4,178.5	4,190.0	4,143.2	4,268.4	4,224.0	4,246.0	22.0
Air transportation.....	461.5	467.0	467.6	468.5	464.3	467.7	468.9	469.5	0.6
Rail transportation.....	209.5	218.8	217.2	217.7	210.8	218.5	218.9	218.9	0.0
Water transportation.....	58.1	64.4	63.0	63.1	61.7	64.7	65.3	66.4	1.1
Truck transportation.....	1,199.9	1,254.7	1,227.4	1,231.6	1,235.0	1,255.9	1,255.0	1,266.2	11.2
Transit and ground passenger transportation.....	429.6	461.3	453.5	455.9	419.7	445.2	444.3	446.3	2.0
Pipeline transportation.....	43.5	42.3	42.6	42.5	43.5	42.3	42.4	42.4	0.0
Scenic and sightseeing transportation.....	20.2	22.1	19.4	20.5	27.2	26.7	27.0	27.4	0.4
Support activities for transportation.....	531.2	544.3	541.1	547.5	534.4	542.0	546.1	550.4	4.3
Couriers and messengers.....	515.2	623.7	523.7	517.4	521.4	573.6	526.9	525.5	-1.4
Warehousing and storage.....	616.8	639.5	623.0	625.3	625.2	631.8	629.2	633.0	3.8
Utilities.....	552.9	549.5	547.3	548.4	554.9	551.2	549.1	550.1	1.0
Information.....	2,724	2,706	2,660	2,677	2,731	2,694	2,685	2,685	0
Publishing industries, except Internet.....	761.7	759.9	753.5	755.5	763.7	756.9	756.3	757.8	1.5
Motion picture and sound recording industries.....	366.3	372.8	351.8	364.6	370.7	372.6	370.9	369.9	-1.0
Broadcasting, except Internet.....	293.2	297.0	295.3	295.7	294.5	295.7	296.0	296.7	0.7
Telecommunications.....	921.3	888.4	876.3	877.6	918.6	881.8	877.1	874.9	-2.2
Data processing, hosting and related services.....	243.6	242.4	236.3	236.0	245.1	241.0	238.2	237.5	-0.7
Other information services.....	137.5	145.8	146.7	148.0	138.0	145.7	146.8	148.1	1.3
Financial activities.....	7,615	7,625	7,559	7,568	7,657	7,617	7,605	7,608	3
Finance and insurance.....	5,700.9	5,692.2	5,665.1	5,668.9	5,705.6	5,681.5	5,677.1	5,672.3	-4.8
Monetary authorities - central bank.....	20.6	21.2	21.0	20.8	20.7	21.2	21.0	21.0	0.0
Credit intermediation and related activities <sup>1</sup> .....	2,547.4	2,553.7	2,542.8	2,544.7	2,546.3	2,549.0	2,544.9	2,542.9	-2.0
Depository credit intermediation <sup>1</sup> .....	1,728.8	1,744.8	1,744.9	1,744.1	1,730.4	1,741.9	1,743.6	1,744.1	0.5
Commercial banking.....	1,304.9	1,317.4	1,316.9	1,316.0	1,304.8	1,316.4	1,316.1	1,315.8	-0.3
Securities, commodity contracts, investments.....	796.5	804.3	803.1	804.7	797.7	803.1	804.9	805.6	0.7
Insurance carriers and related activities.....	2,249.6	2,226.7	2,211.2	2,211.5	2,254.1	2,221.7	2,219.0	2,215.4	-3.6
Funds, trusts, and other financial vehicles.....	86.8	86.3	87.0	87.2	86.8	86.5	87.3	87.4	0.1
Real estate and rental and leasing.....	1,914.3	1,932.9	1,893.4	1,899.2	1,951.7	1,935.3	1,928.2	1,935.4	7.2
Real estate.....	1,385.5	1,396.5	1,368.3	1,374.3	1,406.7	1,395.0	1,390.1	1,394.8	4.7
Rental and leasing services.....	503.5	511.0	499.7	499.6	519.4	515.0	512.5	515.2	2.7
Lessors of nonfinancial intangible assets.....	25.3	25.4	25.4	25.3	25.6	25.3	25.6	25.4	-0.2
Professional and business services.....	16,286	17,034	16,598	16,729	16,544	16,902	16,937	16,984	47
Professional and technical services <sup>1</sup> .....	7,499.3	7,523.1	7,510.2	7,573.5	7,413.5	7,469.4	7,476.2	7,486.2	10.0
Legal services.....	1,105.9	1,118.3	1,106.7	1,104.6	1,112.6	1,113.7	1,114.2	1,111.3	-2.9
Accounting and bookkeeping services.....	1,041.8	894.7	976.5	1,019.5	897.3	881.8	876.4	874.1	-2.3
Architectural and engineering services.....	1,260.8	1,281.4	1,261.1	1,261.6	1,280.8	1,278.5	1,279.0	1,282.1	3.1
Computer systems design and related services.....	1,424.9	1,471.7	1,466.7	1,473.6	1,427.6	1,464.9	1,471.9	1,476.1	4.2
Management and technical consulting services.....	979.4	1,020.6	1,001.2	1,011.3	988.7	1,008.1	1,013.5	1,020.1	6.6
Management of companies and enterprises.....	1,843.3	1,877.3	1,864.4	1,866.2	1,851.7	1,873.3	1,873.2	1,874.1	0.9
Administrative and waste services.....	6,943.6	7,633.4	7,223.4	7,289.6	7,278.4	7,559.6	7,587.4	7,623.8	36.4

See footnotes at end of table.

**ESTABLISHMENT DATA**

**Table B-1. Employees on nonfarm payrolls by industry sector and selected industry detail**

— Continued

[In thousands]

Industry	Not seasonally adjusted				Seasonally adjusted				Change from: Jan.2011 - Feb.2011 <sup>P</sup>
	Feb. 2010	Dec. 2010	Jan. 2011 <sup>P</sup>	Feb. 2011 <sup>P</sup>	Feb. 2010	Dec. 2010	Jan. 2011 <sup>P</sup>	Feb. 2011 <sup>P</sup>	
Administrative and waste services - Continued									
Administrative and support services <sup>1</sup> .....	6,602.1	7,275.2	6,870.8	6,937.6	6,928.4	7,199.8	7,227.6	7,262.7	35.1
Employment services <sup>1</sup> .....	2,463.5	2,974.6	2,694.7	2,749.9	2,609.4	2,843.6	2,863.4	2,892.0	28.6
Temporary help services.....	1,857.8	2,314.3	2,067.7	2,102.8	1,976.2	2,207.2	2,202.3	2,217.8	15.5
Business support services.....	809.7	824.1	804.7	810.9	806.7	805.2	805.5	808.7	3.2
Services to buildings and dwellings.....	1,574.0	1,689.0	1,605.6	1,604.3	1,737.5	1,765.0	1,771.4	1,769.9	-1.5
Waste management and remediation services.....	341.5	358.2	352.6	352.0	350.0	359.8	359.8	361.1	1.3
Education and health services.....	19,498	19,921	19,667	19,919	19,399	19,760	19,784	19,824	40
Educational services.....	3,253.9	3,291.9	3,116.0	3,330.6	3,118.9	3,179.5	3,191.1	3,195.1	4.0
Health care and social assistance.....	16,243.9	16,629.5	16,551.1	16,588.3	16,280.5	16,580.6	16,592.4	16,628.6	36.2
Health care <sup>3</sup> .....	13,643.8	13,951.4	13,891.6	13,921.3	13,687.7	13,922.4	13,931.1	13,965.4	34.3
Ambulatory health care services <sup>1</sup> .....	5,891.5	6,065.8	6,033.3	6,054.0	5,910.2	6,051.3	6,056.9	6,073.8	16.9
Offices of physicians.....	2,303.6	2,343.1	2,328.0	2,327.7	2,307.5	2,330.0	2,331.3	2,332.8	1.5
Outpatient care centers.....	587.2	613.1	611.3	614.4	588.3	611.4	613.1	615.7	2.6
Home health care services.....	1,053.9	1,103.4	1,098.6	1,106.8	1,062.2	1,102.3	1,105.5	1,113.0	7.5
Hospitals.....	4,665.7	4,715.1	4,705.2	4,701.7	4,675.1	4,708.0	4,708.9	4,711.0	2.1
Nursing and residential care facilities <sup>1</sup> .....	3,086.6	3,170.5	3,153.1	3,165.6	3,102.4	3,163.1	3,165.3	3,180.6	15.3
Nursing care facilities.....	1,640.6	1,680.2	1,670.7	1,668.3	1,649.5	1,674.8	1,676.0	1,677.4	1.4
Social assistance <sup>1</sup> .....	2,600.1	2,678.1	2,659.5	2,667.0	2,592.8	2,658.2	2,661.3	2,663.2	1.9
Child day care services.....	861.3	870.2	867.5	869.7	847.6	856.6	859.2	856.5	-2.7
Leisure and hospitality.....	12,359	12,749	12,406	12,508	12,932	13,074	13,071	13,092	21
Arts, entertainment, and recreation.....	1,695.2	1,735.7	1,655.9	1,687.9	1,894.1	1,896.4	1,886.7	1,892.2	5.5
Performing arts and spectator sports.....	365.8	393.5	356.0	373.4	396.1	410.5	402.3	407.3	5.0
Museums, historical sites, zoos, and parks....	114.9	119.8	115.3	116.1	127.3	127.2	127.4	128.0	0.6
Amusements, gambling, and recreation.....	1,214.5	1,222.4	1,184.6	1,198.4	1,370.7	1,358.7	1,357.0	1,356.9	-0.1
Accommodation and food services.....	10,663.4	11,012.9	10,749.9	10,820.4	11,038.0	11,177.4	11,183.8	11,199.3	15.5
Accommodation.....	1,660.1	1,701.9	1,677.0	1,690.9	1,738.0	1,763.3	1,768.0	1,770.9	2.9
Food services and drinking places.....	9,003.3	9,311.0	9,072.9	9,129.5	9,300.0	9,414.1	9,415.8	9,428.4	12.6
Other services.....	5,265	5,393	5,344	5,385	5,317	5,418	5,422	5,436	14
Repair and maintenance.....	1,114.3	1,134.4	1,130.6	1,140.3	1,125.9	1,142.3	1,148.8	1,150.7	1.9
Personal and laundry services.....	1,250.5	1,268.4	1,248.3	1,256.8	1,265.6	1,271.6	1,267.9	1,271.8	3.9
Membership associations and organizations....	2,900.5	2,990.6	2,965.0	2,988.3	2,925.3	3,004.1	3,005.0	3,013.4	8.4
Government.....	22,765	22,586	22,107	22,496	22,474	22,252	22,247	22,217	-30
Federal.....	2,848.0	2,846.0	2,834.0	2,826.0	2,872.0	2,853.0	2,856.0	2,856.0	0.0
Federal, except U.S. Postal Service.....	2,184.9	2,200.0	2,189.0	2,196.2	2,205.1	2,210.0	2,212.9	2,220.4	7.5
U.S. Postal Service.....	662.6	646.2	645.3	630.2	666.8	643.4	642.9	635.6	-7.3
State government.....	5,261.0	5,250.0	5,047.0	5,242.0	5,143.0	5,140.0	5,139.0	5,127.0	-12.0
State government education.....	2,491.7	2,513.6	2,318.9	2,518.6	2,362.7	2,392.6	2,397.2	2,392.2	-5.0
State government, excluding education.....	2,768.8	2,736.1	2,727.8	2,723.0	2,780.2	2,747.3	2,741.3	2,735.0	-6.3
Local government.....	14,656.0	14,490.0	14,226.0	14,428.0	14,459.0	14,259.0	14,252.0	14,234.0	-18.0
Local government education.....	8,370.2	8,266.1	8,047.6	8,248.2	8,058.5	7,951.8	7,950.9	7,939.2	-11.7
Local government, excluding education.....	6,285.7	6,223.5	6,178.8	6,179.5	6,400.0	6,307.3	6,301.4	6,295.1	-6.3

1 Includes other industries, not shown separately.

2 Includes motor vehicles, motor vehicle bodies and trailers, and motor vehicle parts.

3 Includes ambulatory health care services, hospitals, and nursing and residential care facilities.

p Preliminary

**ESTABLISHMENT DATA**

**Table B-2. Average weekly hours and overtime of all employees on private nonfarm payrolls by industry sector, seasonally adjusted**

Industry	Feb. 2010	Dec. 2010	Jan. 2011 <sup>p</sup>	Feb. 2011 <sup>p</sup>
<b>AVERAGE WEEKLY HOURS</b>				
Total private.....	34.0	34.2	34.2	34.2
Goods-producing.....	39.0	39.7	39.6	39.8
Mining and logging.....	43.0	43.5	43.9	43.4
Construction.....	36.9	38.0	37.3	38.0
Manufacturing.....	39.7	40.3	40.4	40.5
Durable goods.....	40.0	40.6	40.6	40.8
Nondurable goods.....	39.4	39.9	39.9	40.0
Private service-providing.....	33.0	33.1	33.1	33.1
Trade, transportation, and utilities.....	34.1	34.5	34.4	34.5
Wholesale trade.....	37.8	38.3	38.4	38.4
Retail trade.....	31.4	31.5	31.3	31.4
Transportation and warehousing.....	37.9	38.7	38.8	38.9
Utilities.....	40.6	41.3	41.7	41.4
Information.....	36.4	36.4	36.5	36.5
Financial activities.....	36.8	37.0	37.0	37.0
Professional and business services.....	35.2	35.6	35.6	35.6
Education and health services.....	32.8	32.7	32.7	32.6
Leisure and hospitality.....	25.7	25.8	25.8	25.9
Other services.....	31.5	31.6	31.6	31.6
<b>AVERAGE OVERTIME HOURS</b>				
Manufacturing.....	2.8	3.2	3.1	3.3
Durable goods.....	2.6	3.1	3.0	3.2
Nondurable goods.....	3.0	3.3	3.2	3.4

p Preliminary

**ESTABLISHMENT DATA**

**Table B-3. Average hourly and weekly earnings of all employees on private nonfarm payrolls by industry sector, seasonally adjusted**

Industry	Average hourly earnings				Average weekly earnings			
	Feb. 2010	Dec. 2010	Jan. 2011 <sup>P</sup>	Feb. 2011 <sup>P</sup>	Feb. 2010	Dec. 2010	Jan. 2011 <sup>P</sup>	Feb. 2011 <sup>P</sup>
Total private.....	\$22.48	\$22.77	\$22.86	\$22.87	\$ 764.32	\$ 778.73	\$ 781.81	\$ 782.15
Goods-producing.....	23.97	24.20	24.40	24.27	934.83	960.74	966.24	965.95
Mining and logging.....	27.08	27.59	27.96	27.86	1,164.44	1,200.17	1,227.44	1,209.12
Construction.....	25.19	25.33	25.43	25.39	929.51	962.54	948.54	964.82
Manufacturing.....	23.22	23.46	23.70	23.52	921.83	945.44	957.48	952.56
Durable goods.....	24.75	24.98	25.23	24.99	990.00	1,014.19	1,024.34	1,019.59
Nondurable goods.....	20.79	20.99	21.17	21.09	819.13	837.50	844.68	843.60
Private service-providing.....	22.13	22.44	22.50	22.54	730.29	742.76	744.75	746.07
Trade, transportation, and utilities.....	19.56	19.76	19.84	19.87	667.00	681.72	682.50	685.52
Wholesale trade.....	26.10	26.17	26.27	26.29	986.58	1,002.31	1,008.77	1,009.54
Retail trade.....	15.51	15.63	15.67	15.69	487.01	492.35	490.47	492.67
Transportation and warehousing.....	20.85	21.21	21.25	21.33	790.22	820.83	824.50	829.74
Utilities.....	32.12	32.78	33.19	33.10	1,304.07	1,353.81	1,384.02	1,370.34
Information.....	30.14	31.06	31.14	31.33	1,097.10	1,130.58	1,136.61	1,143.55
Financial activities.....	27.01	27.45	27.54	27.57	993.97	1,015.65	1,018.98	1,020.09
Professional and business services.....	27.20	27.34	27.37	27.46	957.44	973.30	974.37	977.58
Education and health services.....	22.72	23.29	23.35	23.41	745.22	761.58	763.55	763.17
Leisure and hospitality.....	13.09	13.12	13.19	13.16	336.41	338.50	340.30	340.84
Other services.....	20.09	20.46	20.47	20.53	632.84	646.54	646.85	648.75

p Preliminary



**ESTABLISHMENT DATA**

**Table B-4. Indexes of aggregate weekly hours and payrolls for all employees on private nonfarm payrolls by industry sector, seasonally adjusted**

[2007=100]

Industry	Index of aggregate weekly hours <sup>1</sup>					Index of aggregate weekly payrolls <sup>2</sup>				
	Feb. 2010	Dec. 2010	Jan. 2011 <sup>P</sup>	Feb. 2011 <sup>P</sup>	Percent change from: Jan. 2011 - Feb. 2011 <sup>P</sup>	Feb. 2010	Dec. 2010	Jan. 2011 <sup>P</sup>	Feb. 2011 <sup>P</sup>	Percent change from: Jan. 2011 - Feb. 2011 <sup>P</sup>
Total private.....	91.0	92.6	92.6	92.8	0.2	97.5	100.5	101.0	101.2	0.2
Goods-producing.....	78.5	80.5	80.5	81.2	0.9	85.0	88.0	88.7	89.0	0.3
Mining and logging.....	90.8	100.3	101.8	101.2	-0.6	98.7	111.1	114.3	113.2	-1.0
Construction.....	70.4	72.0	70.4	72.1	2.4	77.0	79.2	77.8	79.6	2.3
Manufacturing.....	81.9	83.8	84.4	84.9	0.6	88.4	91.5	93.1	92.8	-0.3
Durable goods.....	78.8	81.5	82.2	82.9	0.9	86.6	90.4	92.1	92.0	-0.1
Nondurable goods.....	87.9	88.4	88.2	88.5	0.3	92.7	94.2	94.8	94.7	-0.1
Private service-providing.....	94.4	95.9	95.9	96.1	0.2	101.3	104.3	104.6	104.9	0.3
Trade, transportation, and utilities.....	90.9	92.8	92.5	92.9	0.4	95.7	98.7	98.8	99.3	0.5
Wholesale trade.....	89.8	91.6	92.0	92.2	0.2	97.8	100.0	100.8	101.1	0.3
Retail trade.....	91.7	92.4	92.0	92.3	0.3	94.0	95.5	95.3	95.7	0.4
Transportation and warehousing.....	89.9	94.5	93.8	94.5	0.7	95.1	101.8	101.1	102.3	1.2
Utilities.....	97.5	98.5	99.0	98.5	-0.5	103.4	106.7	108.6	107.7	-0.8
Information.....	90.8	89.6	89.5	89.5	0.0	97.4	99.0	99.2	99.8	0.6
Financial activities.....	92.8	92.9	92.7	92.8	0.1	97.9	99.5	99.7	99.8	0.1
Professional and business services.....	91.6	94.6	94.8	95.1	0.3	100.9	104.8	105.2	105.8	0.6
Education and health services.....	103.6	105.2	105.3	105.2	-0.1	110.2	114.7	115.2	115.4	0.2
Leisure and hospitality.....	94.8	96.2	96.2	96.7	0.5	100.1	101.9	102.4	102.7	0.3
Other services.....	92.8	94.9	94.9	95.2	0.3	105.8	110.1	110.3	110.9	0.5

1 The indexes of aggregate weekly hours are calculated by dividing the current month's estimates of aggregate hours by the corresponding 2007 annual average aggregate hours. Aggregate hours estimates are the product of estimates of average weekly hours and employment.

2 The indexes of aggregate weekly payrolls are calculated by dividing the current month's estimates of aggregate weekly payrolls by the corresponding 2007 annual average aggregate weekly payrolls. Aggregate payrolls estimates are the product of estimates of average hourly earnings, average weekly hours, and employment.

p Preliminary

**ESTABLISHMENT DATA**

**Table B-5. Employment of women on nonfarm payrolls by industry sector, seasonally adjusted**

Industry	Women employees (in thousands)				Percent of all employees			
	Feb. 2010	Dec. 2010	Jan. 2011 <sup>P</sup>	Feb. 2011 <sup>P</sup>	Feb. 2010	Dec. 2010	Jan. 2011 <sup>P</sup>	Feb. 2011 <sup>P</sup>
Total nonfarm.....	64,577	64,657	64,671	64,726	50.0	49.6	49.6	49.6
Total private.....	51,757	52,016	52,034	52,098	48.5	48.2	48.1	48.1
Goods-producing.....	4,109	4,063	4,064	4,065	23.3	22.8	22.8	22.7
Mining and logging.....	95	99	102	103	14.1	13.5	13.8	13.9
Construction.....	741	714	712	714	13.4	13.0	13.0	13.0
Manufacturing.....	3,273	3,250	3,250	3,248	28.6	28.1	28.0	27.9
Durable goods.....	1,729	1,719	1,723	1,725	24.7	24.1	24.0	23.9
Nondurable goods.....	1,544	1,531	1,527	1,523	34.6	34.5	34.5	34.3
Private service-providing.....	47,648	47,953	47,970	48,033	53.5	53.2	53.2	53.1
Trade, transportation, and utilities.....	10,029	9,979	10,003	10,019	40.9	40.3	40.4	40.5
Wholesale trade.....	1,646.3	1,644.2	1,648.3	1,651.7	30.2	30.0	30.0	30.0
Retail trade.....	7,248.5	7,183.9	7,213.4	7,222.1	50.4	49.7	49.8	49.9
Transportation and warehousing.....	993.0	1,015.2	1,006.4	1,011.1	24.0	23.8	23.8	23.8
Utilities.....	141.1	135.4	134.7	134.2	25.4	24.6	24.5	24.4
Information.....	1,118	1,094	1,092	1,088	40.9	40.6	40.7	40.5
Financial activities.....	4,524	4,458	4,451	4,438	59.1	58.5	58.5	58.3
Professional and business services.....	7,406	7,518	7,504	7,537	44.8	44.5	44.3	44.4
Education and health services.....	14,977	15,215	15,224	15,247	77.2	77.0	77.0	76.9
Leisure and hospitality.....	6,778	6,821	6,828	6,832	52.4	52.2	52.2	52.2
Other services.....	2,816	2,868	2,868	2,872	53.0	52.9	52.9	52.8
Government.....	12,820	12,641	12,637	12,628	57.0	56.8	56.8	56.8

p Preliminary

**ESTABLISHMENT DATA**

**Table B-6. Employment of production and nonsupervisory employees on private nonfarm payrolls by industry sector, seasonally adjusted<sup>1</sup>**

[In thousands]

Industry	Feb. 2010	Dec. 2010	Jan. 2011 <sup>p</sup>	Feb. 2011 <sup>p</sup>
Total private.....	87,975	88,974	89,031	89,202
Goods-producing.....	12,712	12,808	12,841	12,900
Mining and logging.....	494	553	555	557
Construction.....	4,179	4,162	4,156	4,182
Manufacturing.....	8,039	8,093	8,130	8,161
Durable goods.....	4,778	4,865	4,907	4,936
Nondurable goods.....	3,261	3,228	3,223	3,225
Private service-providing.....	75,263	76,166	76,190	76,302
Trade, transportation, and utilities.....	20,795	20,915	20,922	20,934
Wholesale trade.....	4,385.3	4,383.6	4,392.5	4,403.3
Retail trade.....	12,361.5	12,434.9	12,456.2	12,450.6
Transportation and warehousing.....	3,601.3	3,657.4	3,636.3	3,642.6
Utilities.....	446.9	439.2	436.9	437.9
Information.....	2,183	2,166	2,160	2,161
Financial activities.....	5,926	5,845	5,832	5,826
Professional and business services.....	13,529	13,861	13,898	13,941
Education and health services.....	17,001	17,328	17,345	17,365
Leisure and hospitality.....	11,395	11,514	11,490	11,519
Other services.....	4,434	4,537	4,543	4,556

<sup>1</sup> Data relate to production employees in mining and logging and manufacturing, construction employees in construction, and nonsupervisory employees in the service-providing industries. These groups account for approximately four-fifths of the total employment on private nonfarm payrolls.

<sup>p</sup> Preliminary

**ESTABLISHMENT DATA**

**Table B-7. Average weekly hours and overtime of production and nonsupervisory employees on private nonfarm payrolls by industry sector, seasonally adjusted<sup>1</sup>**

Industry	Feb. 2010	Dec. 2010	Jan. 2011 <sup>p</sup>	Feb. 2011 <sup>p</sup>
<b>AVERAGE WEEKLY HOURS</b>				
Total private.....	33.2	33.5	33.4	33.5
Goods-producing.....	39.4	40.5	40.2	40.5
Mining and logging.....	43.5	44.9	46.0	45.3
Construction.....	37.1	38.6	37.6	38.5
Manufacturing.....	40.4	41.3	41.1	41.2
Durable goods.....	40.5	41.6	41.4	41.6
Nondurable goods.....	40.2	40.7	40.5	40.7
Private service-providing.....	32.1	32.3	32.3	32.3
Trade, transportation, and utilities.....	33.0	33.6	33.5	33.6
Wholesale trade.....	37.7	38.2	38.3	38.4
Retail trade.....	30.0	30.5	30.3	30.3
Transportation and warehousing.....	36.3	37.7	37.4	37.9
Utilities.....	41.6	42.2	42.4	42.1
Information.....	36.4	36.1	36.2	36.1
Financial activities.....	36.0	36.3	36.4	36.3
Professional and business services.....	34.9	35.3	35.1	35.2
Education and health services.....	32.2	32.1	32.1	32.2
Leisure and hospitality.....	24.8	24.7	24.6	24.7
Other services.....	30.6	30.7	30.7	30.7
<b>AVERAGE OVERTIME HOURS</b>				
Manufacturing.....	3.5	4.0	4.0	4.2
Durable goods.....	3.4	4.1	4.1	4.3
Nondurable goods.....	3.6	3.9	3.9	4.0

<sup>1</sup> Data relate to production employees in mining and logging and manufacturing, construction employees in construction, and nonsupervisory employees in the service-providing industries. These groups account for approximately four-fifths of the total employment on private nonfarm payrolls.

<sup>p</sup> Preliminary

**ESTABLISHMENT DATA**

**Table B-8. Average hourly and weekly earnings of production and nonsupervisory employees on private nonfarm payrolls by industry sector, seasonally adjusted<sup>1</sup>**

Industry	Average hourly earnings				Average weekly earnings			
	Feb. 2010	Dec. 2010	Jan. 2011 <sup>P</sup>	Feb. 2011 <sup>P</sup>	Feb. 2010	Dec. 2010	Jan. 2011 <sup>P</sup>	Feb. 2011 <sup>P</sup>
Total private.....	\$18.93	\$19.23	\$19.33	\$19.33	\$ 628.48	\$ 644.21	\$ 645.62	\$ 647.56
Goods-producing.....	20.14	20.49	20.56	20.60	793.52	829.85	826.51	834.30
Mining and logging.....	23.67	24.02	24.09	24.19	1,029.65	1,078.50	1,108.14	1,095.81
Construction.....	23.12	23.44	23.50	23.52	857.75	904.78	883.60	905.52
Manufacturing.....	18.48	18.80	18.92	18.94	746.59	776.44	777.61	780.33
Durable goods.....	19.71	20.03	20.15	20.16	798.26	833.25	834.21	838.66
Nondurable goods.....	16.66	16.91	17.00	17.03	669.73	688.24	688.50	693.12
Private service-providing.....	18.68	18.97	19.07	19.06	599.63	612.73	615.96	615.64
Trade, transportation, and utilities.....	16.73	16.97	17.06	17.09	552.09	570.19	571.51	574.22
Wholesale trade.....	21.37	21.79	21.91	21.91	805.65	832.38	839.15	841.34
Retail trade.....	13.18	13.36	13.37	13.37	395.40	407.48	405.11	405.11
Transportation and warehousing.....	19.09	19.28	19.52	19.60	692.97	726.86	730.05	742.84
Utilities.....	29.86	30.13	30.16	30.18	1,242.18	1,271.49	1,278.78	1,270.58
Information.....	25.63	26.09	26.20	25.99	932.93	941.85	948.44	938.24
Financial activities.....	21.31	21.63	21.72	21.60	767.16	785.17	790.61	784.08
Professional and business services.....	22.69	22.84	23.03	23.05	791.88	806.25	808.35	811.36
Education and health services.....	19.85	20.42	20.49	20.49	639.17	655.48	657.73	659.78
Leisure and hospitality.....	11.31	11.31	11.33	11.34	280.49	279.36	278.72	280.10
Other services.....	16.95	17.24	17.27	17.27	518.67	529.27	530.19	530.19

<sup>1</sup> Data relate to production employees in mining and logging and manufacturing, construction employees in construction, and nonsupervisory employees in the service-providing industries. These groups account for approximately four-fifths of the total employment on private nonfarm payrolls.

p Preliminary

**ESTABLISHMENT DATA**

**Table B-9. Indexes of aggregate weekly hours and payrolls for production and nonsupervisory employees on private nonfarm payrolls by industry sector, seasonally adjusted<sup>1</sup>**

[2002=100]

Industry	Index of aggregate weekly hours <sup>2</sup>					Index of aggregate weekly payrolls <sup>3</sup>				
	Feb. 2010	Dec. 2010	Jan. 2011 <sup>P</sup>	Feb. 2011 <sup>P</sup>	Percent change from: Jan. 2011 - Feb. 2011 <sup>P</sup>	Feb. 2010	Dec. 2010	Jan. 2011 <sup>P</sup>	Feb. 2011 <sup>P</sup>	Percent change from: Jan. 2011 - Feb. 2011 <sup>P</sup>
Total private.....	97.6	99.6	99.4	99.8	0.4	123.4	128.0	128.3	129.0	0.5
Goods-producing.....	76.5	79.3	78.9	79.8	1.1	94.4	99.5	99.3	100.7	1.4
Mining and logging.....	114.2	131.9	135.7	134.1	-1.2	157.2	184.3	190.1	188.6	-0.8
Construction.....	77.6	80.4	78.2	80.6	3.1	96.9	101.8	99.3	102.4	3.1
Manufacturing.....	74.5	76.7	76.7	77.2	0.7	90.1	94.3	94.9	95.6	0.7
Durable goods.....	72.7	76.0	76.3	77.1	1.0	89.5	95.1	96.0	97.1	1.1
Nondurable goods.....	77.2	77.4	76.9	77.3	0.5	90.9	92.5	92.4	93.1	0.8
Private service-providing.....	103.3	105.2	105.2	105.4	0.2	132.3	136.8	137.6	137.7	0.1
Trade, transportation, and utilities.....	95.7	98.0	97.7	98.1	0.4	114.2	118.6	118.9	119.5	0.5
Wholesale trade.....	97.4	98.6	99.1	99.6	0.5	122.6	126.6	127.9	128.5	0.5
Retail trade.....	93.9	96.0	95.5	95.5	0.0	106.0	109.9	109.5	109.4	-0.1
Transportation and warehousing.....	98.4	103.8	102.4	103.9	1.5	119.2	126.9	126.8	129.2	1.9
Utilities.....	95.1	94.8	94.8	94.3	-0.5	118.5	119.2	119.3	118.8	-0.4
Information.....	90.7	89.3	89.3	89.1	-0.2	115.1	115.3	115.8	114.6	-1.0
Financial activities.....	102.1	101.5	101.6	101.2	-0.4	134.5	135.8	136.4	135.2	-0.9
Professional and business services.....	105.8	109.7	109.3	110.0	0.6	142.9	149.0	149.8	150.8	0.7
Education and health services.....	118.1	120.0	120.1	120.6	0.4	154.1	161.1	161.8	162.5	0.4
Leisure and hospitality.....	103.6	104.2	103.6	104.3	0.7	133.0	133.9	133.3	134.3	0.8
Other services.....	95.2	97.7	97.8	98.1	0.3	117.5	122.7	123.1	123.5	0.3

1 Data relate to production employees in mining and logging and manufacturing, construction employees in construction, and nonsupervisory employees in the service-providing industries. These groups account for approximately four-fifths of the total employment on private nonfarm payrolls.

2 The indexes of aggregate weekly hours are calculated by dividing the current month's estimates of aggregate hours by the corresponding 2002 annual average aggregate hours. Aggregate hours estimates are the product of estimates of average weekly hours and employment.

3 The indexes of aggregate weekly payrolls are calculated by dividing the current month's estimates of aggregate weekly payrolls by the corresponding 2002 annual average aggregate weekly payrolls. Aggregate payrolls estimates are the product of estimates of average hourly earnings, average weekly hours, and employment.

p Preliminary