

- Organizations
  - Lockheed Martin Information Systems and Global Services (IS&GS)
  - Lockheed Martin Advanced Technology Labs (ATL)
  - Lockheed Martin Simulation & Training Support (STS)
- Lead Investigator-Michelle Weihmann-Purcell





# VW Research Interests

- Characteristics of Gamers/Residents
- Avatar and Representation
- Group Formation and Dynamics
- Deception



**IS&GS**

Extensive Internal R&D program and CRAD experience, Lead system integrator

**Advanced Technology Labs**

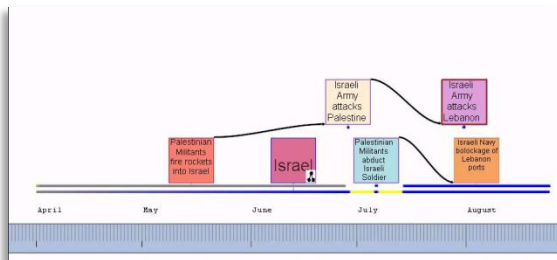
Advanced-computing, applied R&D

**Simulation and Training Support**

Virtual World Labs™, shaping virtual worlds for customer training needs

**Knowledge Creation**

- Sentiment and tone of discourse analysis
- NLP entity and event extraction
- Abductive link analysis
- Cognitive and emotional models
- Event chaining through link analysis



# grind ur rep

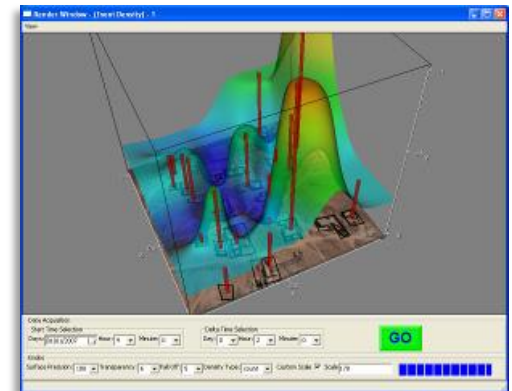
**Virtual Environments and Serious Games**

- Immersive distributed collaboration environment (*Immersica*™)
- Mirror Worlds
- Mixed Reality
- Serious Games for Systems Engineering
- Massively Distributed Intelligence Analysis(MADIA) Environment



**Activity Analysis**

- Activity Pattern Analysis
- Pattern learning and anomaly detection
- Multi-agent game modeling



- Seeking Social Science researchers to work with to indentify salient cues of behaviors indicative of
  - Gender
  - Approx. age
  - Economic Status
  - Ideology
  - Degree of Influence
  - Culture

- Michelle Weihmann-Purcell
- Lead Investigator
- Lockheed Martin IS&GS
- michelle.j.weihmann-purcell@lmco.com
- 610-354-4640
- srl-michelle weihmann-purcell at lmco.com