



U.S. Army Research, Development and Engineering Command

# ARL Overview for IARPA Metaphor Program Proposers' Day



***TECHNOLOGY DRIVEN. WARFIGHTER FOCUSED.***

V. Melissa Holland  
Chief, Multilingual Computing Branch  
US Army Research Laboratory (ARL)



## Mission and Make-up

The Army's principal lab for physical, computational, and information sciences: Provide research, technology, and analyses

advanced computing  
network science  
power and energy  
materials chemistry

sensors  
robotics  
human-machine interaction  
human performance

Conduct Internal research (1700 scientists, engineers, technicians) and support external research (e.g., Multi-University Research Initiatives, Collaborative Technology Alliances)

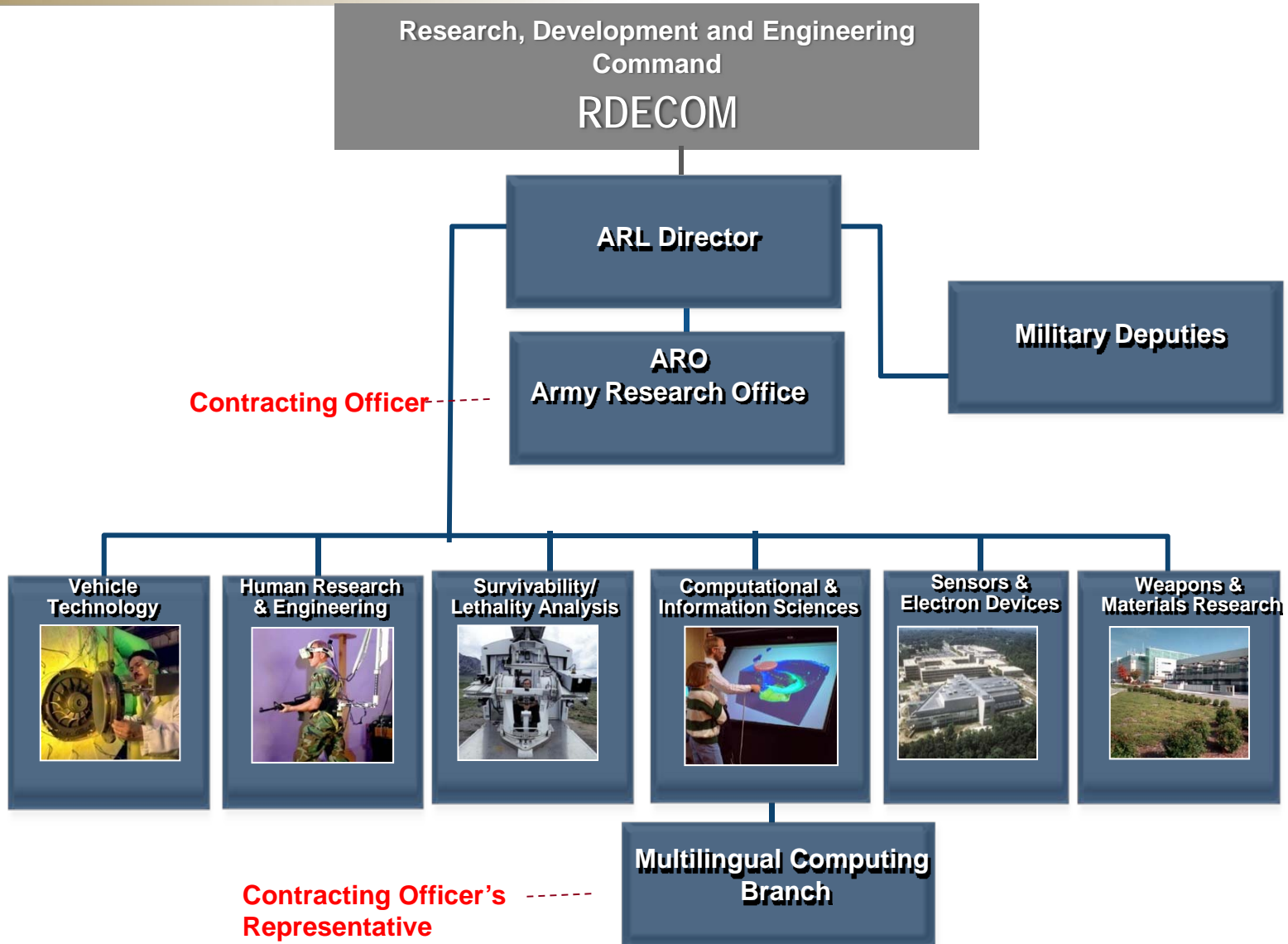
## Location

- HQ in Adelphi MD (Washington DC suburbs)
- Presence at Aberdeen Proving Ground
- Army Research Office (ARO) in Research Triangle NC
- Field Units co-located with Army posts





# ARL Organization





# Contracting Officer Roles



- CO
  - Awards and modifies contracts, given PM and COR specifications.
  - Obligates government funds.
  
- COR (ARL)
  - Approves contracts and mods, given PM concurrence.
  - Reviews and approves vouchers (wide area workflow), reconciles with financial reports.
  - Assists PM with technical review of deliverables (site visits, tech reports, PI meetings).
  - Ensures protection of human research subjects: Receives Institutional Review Board (IRB) protocols and primary IRB reviews; sends these for secondary IRB review (ARL).



# Federal Structure for Protection of Human Research Subjects

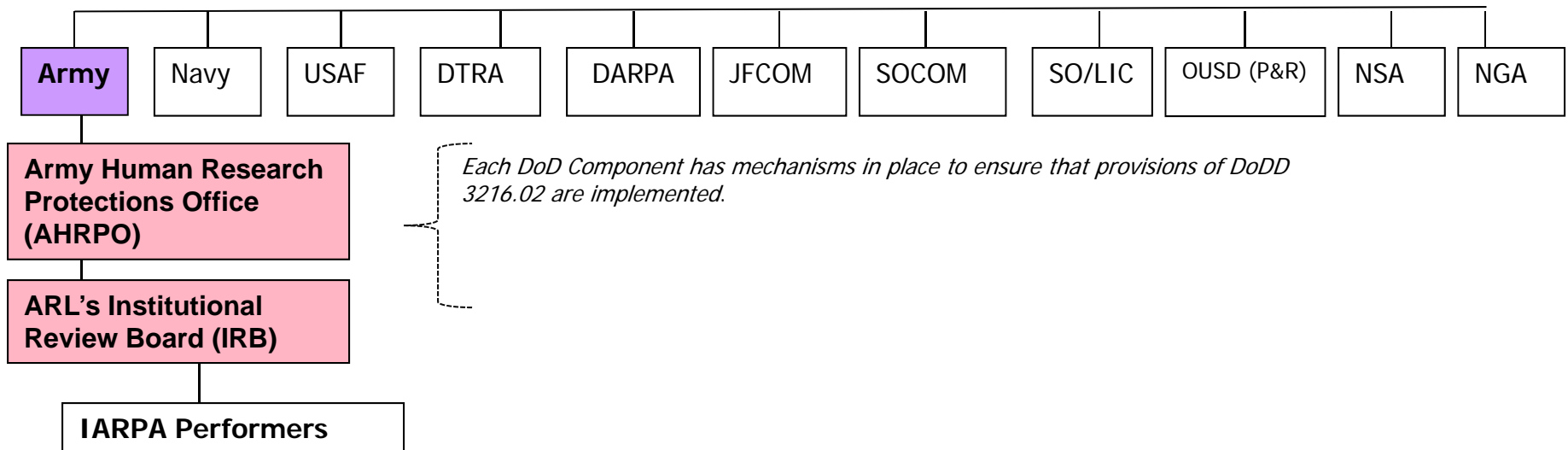


17 Federal Departments & Agencies

Secretary of Defense

Director, Defense Research and Engineering (DDRE)

DoD's rule, DoDD 3216.02 "Protection of Human Subjects and Adherence to Ethical Standards in DoD-Supported Research," applies to all DOD Components





UNCLASSIFIED

# ARL's Structure for Protection of Human Subjects



- U.S. Army Research Laboratory (ARL)'s Institutional Review Board (IRB) is hosted by HRED (Human Research and Engineering Directorate). IRB Chair is from HRED.
- ARL's CISD (Computational and Information Sciences Directorate), which executes IARPA programs, has representation on this IRB.
  - CISD DIR oversees CISD's IRB participation.
  - CISD Human Protections Administrator sits on IRB.
  - COR, in CISD, submits PI protocols and primary IRB findings to CISD Human Protections Coordinator.
  - CISD Human Protections Coordinator reviews protocols and primary IRB findings, communicates with COR and PI if gaps; submits to ARL IRB for secondary approval



Following contract award the performer files an initial application for new study with her organization's IRB chairman.

The chairman decides if the proposed work:

- a.) is not research or does not involve human subjects according to 45 CFR 46
- b.) is research with human subjects and can be approved as submitted by the chairman (expedited approval)

If the proposed work is research with human subjects but is not eligible for expedited approval then the full IRB must review it, in which case the proposed work may be:

- c.) approved
- d.) approved in principle but with modifications (must be resubmitted)
- e.) disapproved

Proposed work that meets the conditions **a**, **b**, or **c** (above) then moves on to a review by ARL's IRB. The process is the same as above, beginning with the performer providing ARL's IRB chairman with both a copy of the study protocol and the initial IRB's determination.

For each protocol ARL's IRB chairman will send a review and determination to the Army Human Research Protections Office for their consensus.