

GeoSync – A Framework for Registering Terrain Photos with Geographic Maps

Robot Vision Lab
Purdue University

<http://RVL.ecn.purdue.edu>

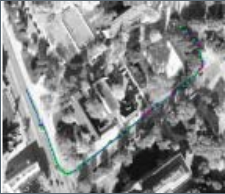
Avi Kak (kak@purdue.edu)

Johnny Park (jpark@purdue.edu)

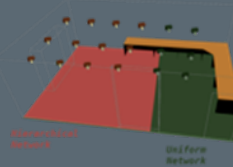
Purdue Robot Vision Lab (RVL)

- Over 30 years of experience in all facets of computer vision and image processing
- Rich tradition of active collaboration with industry
 - Developed vision-based line tracking system for Ford
 - Developed robust tracking of vehicles in wide-area surveillance video
 - Developed clinically verified CBIR system for large medical image databases
 - Developed a camera handoff protocol for surveillance with camera networks
- Current RVL members: 2 faculty, 1 research scientist, and 16 PhD students

Recent Projects



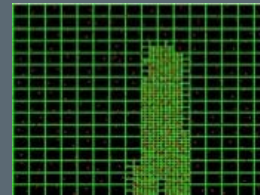
Tracking in wide area aerial video



Research in wired/wireless camera networks



Simultaneous segmentation and tracking



Hierarchical approach to fast background subtraction



Robust motion estimation under varying illumination



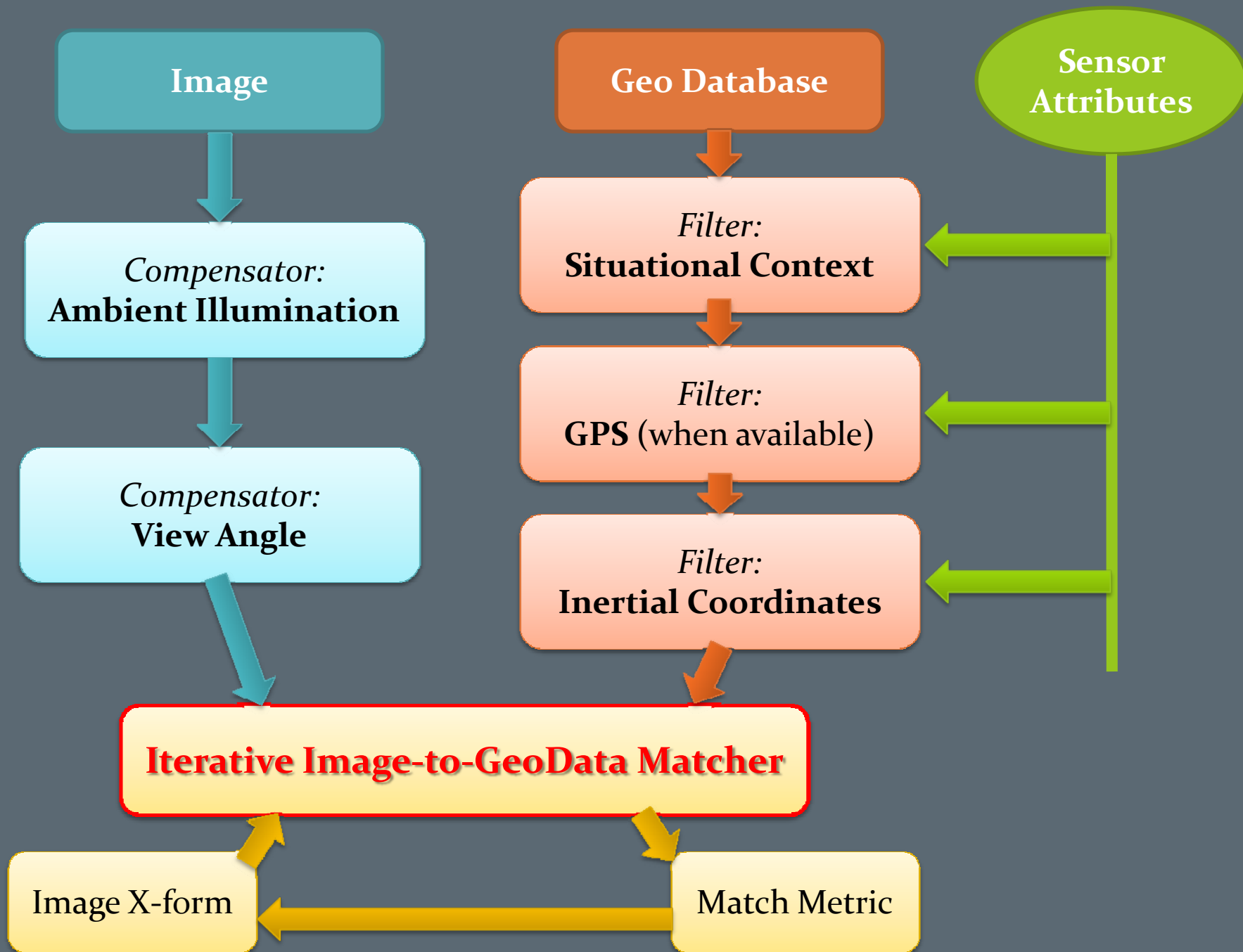
3D object tracking



Illumination invariant color representation



Content-based image retrieval from large medical image databases

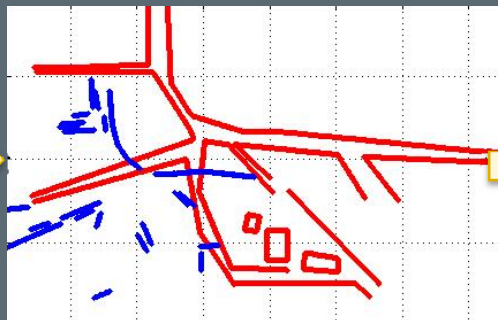


—: Geo Database
—: Extracted lines in UAV image

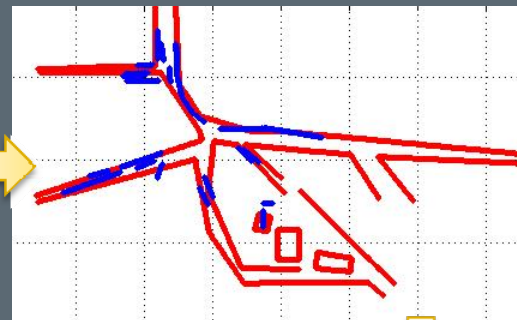
Geo Database



Initial registration



After ICP



UAV image



Registered images

